

2013

**DRAFT ANNUAL PROGRESS
REPORT**

on

MONITORING the IMPLEMENTATION

Of the

DISTRICT 2010 – 2013

MEDIUMTERM

DEVELOPMENT PLAN

**INLINE WITH THE GHANA SHARED GROWTH
AND DEVELOPMENT AGENDA**

PUSIGA DISTRICT ASSEMBLY

EXECUTIVE SUMMARY

The District is reporting on Annual Performance for 2013 of the 2010 – 2013 Medium Term Development Plan reviewed from Bawku Municipal in line with the Ghana's Shared Growth and Development Agenda framework. The report covers the period January to December, 2013. It is a comparative analysis of the performance of the District on some selected indicators (National and District Specifics). It considers the trend of these indicators from the base year 2012 and makes a projection of whether the District can achieve its targets set for 2013.

The report covers the activities (programmes and projects) of the Pusiga District for the period 1st January to 31st December 2013. The report seeks to highlight the development and significant events that took place during the period under review. The District Assembly has a total membership of 22, of which 15 were elected and 7 appointed. Politically the District is made up of 1 constituency, 15 Electoral Areas 5 Area Councils and 30 Unit Committees.

The General Assembly held at least three (3) ordinary meetings and deliberated on issues affecting the District. All the five (5) Area Councils were operational and assisted in the planning, implementation and monitoring of Assembly programmes and projects.

Projects that were started in 2012 were completed in 2013 and handed over to the beneficiary communities. The projects which were started in 2013 were either completed or ongoing.

The District did not perform badly on agriculture production as a result of government subsidy on fertilizer. Peasant farmers recorded high yields as compared to previous year thereby improving local economies.

The District enjoyed relative peace during the period.

The District Assembly collaborates with the decentralized departments and its development partners such as Bawku East Women Development Association (BEWDA), Community Water and Sanitation Agency (CWSA), and Ghana School Feeding Programme (GSFP). Other collaborating partners were the Regional Co-ordinating Council (RCC), Traditional Authorities, Security Agencies and all Party Operatives in the District, among others. The support from all these bodies shows clear signs that the District has a huge potential to grow which would contribute immensely to the overall development of the human folk in the District.

The main challenge of the District Assembly was infrastructure ranging from Central Administration, decentralized departments to other agencies as the Assembly's office is still housed in the Pusiga Area Council and staff living in rented houses which was not conducive for them. Some of the Assembly's casual staff are paid from its internal generated funds which had a heavy toll on the little internally Generated Revenue of the Assembly which was always used to pay their allowances leaving virtually nothing to run the Administration and also embark on capital expenditure.

Chapter 1 of the documents covers the introduction and the methodology adapted to arrive at the report. The purpose of compiling an Annual Progress Report (APR) is stated in the introduction. It is to provide structured reviews of the Implementation of Programmes, Projects Activities and their impact on the socio-economic development of a country and for that matter a District for a given year. All these are geared towards producing a National Annual Progress Reports on the Implementation of the Ghana Shared Growth and Development Agenda (GSGDA) for 2013.

The methodology is basically data gathering from sectors, Agencies and Development Partners and analysis of data gathered to provide information as to the performance of the indicators. The challenges in compiling the Report are also well noted.

Chapter 2 contains Tables on the performance of the core and District specific indicators. Though the report is for 2012 but a comparison is normally made with the immediate preceding years and even with the base year to see the trend over a period of time. These tables cover the seven Thematic Areas of GSGDA. These are categorized under the broad strategic direction for the Medium-Term Development Policy Framework of the Ghana Shared Growth and Development Agenda (2010-2013) which focuses on the following thematic areas:

Within this context, the thematic areas of the MTDPF will be as follows:

1. Ensuring and sustaining macroeconomic stability;
2. Enhanced competitiveness of Ghana's private sector;
3. Accelerated agricultural modernization and natural resource management;
4. Oil and gas development;
5. Infrastructure and human settlements development;
6. Human development, employment and productivity; and
7. Transparent and accountable governance.

LIST OF ACRONYMS/ABBREVIATIONS

1. AIDS	Acquired Immune Deficiency Syndrome
2. APR	Annual Progress Report
3. BESSFA	Bawku East Small Scale Farmers Association
4. BEWDA	Bawku East Women Development Association
5. CBOs	Community Based Organizations
6. CHOs	Community Health Officers
7. CIC	Community Information Center
8. CSM	Cerebrum Spinal Meningitis
9. CSOs	Civil Society Organizations
10. CWSA	Community Water and Sanitation Agency
11. DA	District Assembly
12. DACF	District Assembly Common Fund
13. DCE	District Chief Executive
14. DDF	District Development Facility
15. DEOC	District Education Oversight Committee
16. DISEC	District Security Council
17. FBOs	Faith Based Organizations
18. GOG	Government of Ghana
19. GPRS II	Growth and Poverty Reduction Strategy
20. GPRTU	Ghana Private Road Transport Union
21. GSDA	Ghana Shared Growth and Development Agenda
22. GSFP	Ghana School Feeding Programme
23. HIV	Human Immune Virus
24. IGF	Internally Generated Fund
25. KVIP	Kumasi Ventilation Improve Pit
26. LEAP	Livelihood Empowerment Against Poverty
27. MP's CF	Member of Parliament's Common Fund
28. MTDP	Medium Term Development Plan
29. NDPC	National Development Planning Commission
30. NGOs	Non Governmental Organizations
31. NHIS	National Health Insurance Scheme
32. PWDs	People With Disabilities
33. RCC	Regional Co-ordinating Council

- 34. RPCU Regional Planning Co-ordinating Unit
- 35. SHEP Self Help Electrification Programme
- 36. TB Tuberculosis
- 37. WCs Water Closets

TABLE OF CONTENT

CONTENT	PAGES
CHAPTER ONE	
Introduction.....	1
Brief Profile of the Pusiga District.....	2
Vision.....	2
Mission.....	2
Physical/Natural Environment.....	2
Relief and Drainage.....	2
Climate.....	2
Vegetation.....	3
Geology.....	3
Hydrology.....	4
Conditions of the Natural Environment.....	4
Built Environment.....	4
Demographic Characteristics.....	4
Population Size and Distribution.....	4
Age Dependency Ratio.....	6
Age-Sex Structure.....	7
Settlement Pattern.....	8
Migration.....	9
State of Sub-Districts.....	9
Household Size, family System and Gender.....	9

Culture.....	9
Ethnicity.....	9
Festivals.....	9
Marriages.....	10
Funerals.....	10
Religion.....	10
Spatial Analysis.....	11
District Economy.....	11
Manufacturing.....	12
Transportation.....	12
District and Religion.....	13
Agro Processing.....	13
Commerce.....	13
Construction Industry.....	13
District Revenue and Expenditure Pattern.....	13
Sources of Revenue.....	13
Revenue Mobilization.....	15
Expenditure.....	15
Unemployment and Underemployment.....	17
Investment /Economic Opportunities.....	17
Tourism and Hospitality Industry.....	18
Kulungungu Bomb Site.....	18
Naa Gbewaa Shrine.....	18
Hospitality Industry.....	18

Financial Institutions.....	19
Communication.....	19
Infrastructure Distribution.....	19
Economic Infrastructure.....	19
Road Infrastructure.....	19
Energy.....	19
Justice and Security.....	20
Challenges of the Security Services.....	20
Women Participation in Governance.....	20
General Problems of Good Governance.....	20
The Administration of the District.....	20
The District Assembly.....	20
The Executive Committee.....	21
Traditional Authority.....	21
Social Services.....	21
Education.....	21
Ghana School Feeding Programme.....	24
Health.....	25
States of Existing Health Infrastructure.....	25
Staff Strength.....	26
Staff not doing Active Surveillance.....	29
Measles Outbreak.....	29
T. B. Control Program.....	30
T. B. Case Notification and Holding.....	30

PMTCT and HTC.....	30
Syphilis Screening	31
Malaria Control Program.....	31
Expanded Program on Immunization.....	32
Nutrition.....	33
Vulnerability (Nutritional) Issue.....	33
Antenatal Care Services.....	.34
Skilled Deliveries.....	39
Commodity Availability.....	40
Human Resource.....	40
Still Births Maternal Deaths.....	41
Post-natal Care Services.....	42
Post-Partum Vitamin A.....	43
Challenges.....	44
Water and Environmental Sanitation.....	45
Environmental Sanitation.....	45
Waste Management.....	45
Challenges.....	45
Vulnerability and Exclusion	46
Women.....	46
People with Disabilities (PWDs).....	47
Methodology for the Development of the Medium Term Development Plan.....	47
CHAPTER TWO	
Ensuring and Sustaining Macroeconomic Stability.....	48

CHAPTER THREE

Accelerated Agriculture Modernization and Sustainable Natural Resources Management...	49
Crop Production and Supply.....	49
Rainfall and its Effects on Agriculture.....	49
General Crop Performance 2013.....	50
Irrigation and Waste Management.....	51
FBO Development Annual 2013.....	52
Youth in Agriculture.....	54
Fertilizer Subsidy Program 2013.....	54
Market Prices.....	55
Average Wholesale Food Price of Major Commodities.....	55

CHAPTER FOUR

Oil and Gas.....	61
National Youth Employment Program.....	61

CHAPTER FIVE

Infrastructure and Human Settlement.....	62
Community Water and Sanitation Agency.....	62
Small Town Water System.....	62
District Development Facility (DDF) Project.....	62
District Assembly Common Fund.....	62

CHAPTER SIX

Human Development, Productivity and Employment.....	63
Top Ten Causes of OPD Attendance 2013.....	64
Family Planning.....	68

CHAPTER SEVEN

Transparency and Accountable Governance.....	117
Recruitment Undertaken.....	117
Administrative and Managerial Changes.....	117
Security.....	117
National Indicator.....	117
Police Citizen Ratio.....	117
Ghana Fire Service.....	118
Conflict Resolution Strategies and Progress Made.....	118
Tourism.....	118
Conclusion.....	118

LIST OF TABLES

Population by Age, Sex and type of Locality.....	5
Dependency Ratio by Locality.....	7
Population Pyramid.....	8
Table Showing Festivals, Ethnic Group and Period.....	10
Table Showing Religious Denomination.....	11
Sources of Revenue to the District Assembly 2012-2013.....	14
Expenditure Pattern.....	15
Revenue-Expenditure Matching.....	16
Revenue and Expenditure for the Period 2012-2013.....	16
Educational Facilities.....	22
Summary of Private Basic Schools Enrolment and Staffing Figures for 2012/2013	

academic Year.....	22
Ghana School Feeding Program, Beneficiaries Schools Enrolment 2012/2013	
academic Year.....	24
Health Infrastructure.....	25
Health Facilities in the District.....	25
General Staffing Situation of the District (GES, CHAG and Private) 2013	
Table 2: Top Ten Causes of OPD Attendance.....	28
Trends of Cases under Diseases Surveillance.....	29
Tuberculosis Case Notification and Holding 2012-2013.....	30
Indicators of PMTCT for 2010-2013.....	30
Table 13: Malaria Case Situation 2010-2013.....	31
Table: Vulnerability (Nutritional) Issues Status of NMCCSP, 2013.....	34
Table: Vulnerability (Nutritional Issues NMCCSP Performance, 2013.....	34
Table 5: ANC Registration by Sub-District 2010-2013.....	36
Table 6: Summary of HB Results of ANC Clients, 2010-2013.....	38
Table 7: Performance on ANC Clients Making 4 th Visits, 2010-2013.....	39
Table 8: Some EOC Indicators 2010-2013.....	41
Table: PNC by Sub-Districts.....	42
Table: Post –Partum Vitamin A Coverage By Sub-Districts, 2010-2013.....	43
Table: Financial Performance.....	48
Table: Land Tenure System.....	49
Table 1: Climatic Data of the Period	50
Table: Situational Report on General Crop Performance, 2013.....	50

Table: Storage Facilities.....	51
Table: District Irrigated Crops.....	51
Table: Group Formation.....	52
Distribution of Farmers Based Organize Accessing Services.....	53
Table 14: Youth in Agriculture.....	54
Table: Update of Fertilizer Received.....	55
Table: Livestock Census and Their Prevalent Rates.....	56
Table: MOFA Staff Strength.....	57
Table: Agricultural Extension Capacity.....	57
Changes in Number of Household with Access to Electricity.....	59
District Indicators for Human Development Health.....	63
Top Ten Causes of OPD Attendance.....	64
Status of CHPS Implementation.....	64
CHPS Zones and Staffing.....	65
CHPS Contribution to Service Delivery 2011-2013.....	66
CHPS Contribution RCH (Annual).....	67
PMTCT: Pregnant Women Tested For HIV, 2011-2013.....	67
Family Planning CYP 2010-2013.....	68
Institutional Maternal Deaths and Still Births.....	69
District Performance NMCCSP.....	70
Cases Tested and Referrals 2013.....	70
Contribution of CHAG and Private Facility (BCG and Measles).....	72
Contribution of CHAG and Private Facility (Perital and Penta 3).....	72
NIDs 2013.....	73

Payment To The Beneficiary Households (HHS) of Livelihood Empowerment Against Poverty (LEAP) For 2012

Register of Persons with Disabilities.....	106
Ghana Education Service.....	75
Summary of Public Basic Schools Enrolment and Staffing Figures for 2012-2013.....	75
List of Schools With and Without Toilet.....	86
List of Schools With and Without Urinals.....	88-90
List of Schools With and Without Water.....	90-92
List of Schools with and Without Electricity.....	92-95
List of Schools and The Available Classrooms.....	96-97
List of Schools With and Without Desk.....	98
School Feeding Programme Beneficiary Enrolment 2012-2013.....	103

LIST OF FIGURES

Summary Of Public Basic Schools Enrolment and Staffing for 2012-2013.....	22
Figure 2: Average District ANC Registrants-Pusiga, 2010-2013.....	36
Figure 3: ANC Registrants By Trimester, Pusiga 2010-2013.....	37
Figure 4: HB Checked at Registration as a Percentage of ANC Registrants, 2010.....	38
Figure 5: Fourth ANC Visits, 2010-2-13.....	39
Figure 6: Skilled Deliveries By Sub-Districts.....	40
Figure 19: Post-Partum Vitamin A, 2010-2013.....	43

CHAPTER ONE

INTRODUCTION

Ghana successfully implemented a Growth and Poverty Reduction Strategy (GPRS II) between 2006 and 2009. This plan was geared towards making Ghana a middle income country and it has made remarkable successes in setting the necessary conditions for growth in the economy and other sectors. This aim has been achieved to a considerable extent and the country is now geared towards shared growth and human resource development. This is what this current Medium Term Development Plan is seeking to promote. Its guiding principle is the Shared Growth and Development Agenda (GSGDA), 2010-2013

Despite significant improvements in the performance of the economy in the last two decades, there remain a number of macroeconomic and structural challenges that limit the capacity of the economy to achieve sustainable improvements in the standards of living of the people. These include over-reliance on the production of primary commodities without sufficient linkages to other sectors of the economy, over-reliance on rain-fed agriculture and low application of science, technology and innovation in the various production and distribution chains. Hence the preparation of Ghana's Shared Growth and Development Agenda (GSGDA 2010-2013).

To find out if the Implementation of the Strategy is on course towards achieving set targets, Monitoring and Evaluation exercises are normally conducted and data collected. An analysis of this data gives an indication of whether the country is making progress or not. Annual Progress Reports are then compiled. These provide structured reviews of the Implementation of Programmes and projects and their impact on the Socio-economic development of the country for a given year.

It is a District Annual Progress Report prepared in line with the Implementation of the District Medium Term Development Plan programmes/projects and activities in 2013 that will feed into the 2013 National Monitoring Report to be submitted to Government.

BRIEF PROFILE OF THE PUSIGA DISTRICT ASSEMBLY

District Profile

Vision

A well developed District with sustainable improvement in the living standard of the people and create opportunities for all categories of people to participate in decision making through a systematic social, economic, political and cultural development programmes.

Mission

Pusiga District Assembly exists to provide goods and services for sustainable development of the people in the District through the mobilization of both human and material resources in a participatory local government structure in an open and transparent environment in partnership with all stakeholders.

Physical and Natural Environment

Pusiga District is one of the thirteen (13) Districts and Municipalities in the Upper East Region of Ghana.

It is located approximately between latitude 11° 11' and 10° 40' north and longitude 0° 18' W and 0° 6' E in the north-eastern corner of the region. The district has total land area of about 148sq km. It shares boundaries with Burkina-Faso to the north, Republic of Togo to the east, Bawku Municipal to the west and Garu-Tempane District to the south.

Relief and Drainage

The District is underlain mainly by Sandstone and granite rock formation. The relief of the District easily marks the highest point of the Upper East Region. In areas bordering the basins of the White Volta River and its tributaries, the relief is generally low and slightly undulating with heights of 120-150 meters above sea level. The rest of the District consists of series of plateau surface. These being remnants of prolonged period of weathering and erosion of scattered hills. The average height of the plateau is 400 meters above sea level, Outcrops of rocks are also found in many areas.

The District is drained mainly by the White Volta and its tributaries. Other streams which influence the drainage system include Poanaba and Kyinchingo. Except in a few areas around the river basin where the drainage becomes poor because of seasonal flooding. The area is generally drained.

Climate

Pusiga District is part of the interior continental climatic zone of the country characterized by pronounced dry and wet seasons. The two seasons are influenced by two alternate air masses. One of them is the cold, dusty and dry harmatan air or the North east trade winds which blows mostly from Late November to early March

in the north-easterly direction. During that period rainfall is entirely absent and humidity is very low, sometimes less than 10mm and relative humidity rarely exceeds 20 % during the day but may rise up to 60% during the night and early morning. Temperature is usually modest at this time of the year by tropical standards (260 C-280 C). Between March and May Temperatures could be as high as 380C. The highest mean monthly temperature is 400C, which occurs in April while the lowest temperature of 180C which occurs in December/January. There is plenty sun shine in the area which can support solar energy development. There are also potentials for wind mills which can be used for irrigation purposes. The period is characterized by such human and animal diseases such as CSM, Anthrax and New castle among others.

The second air mass occurs between May and October. During this period the area comes under the influence of the deep tropical maritime air mass. The air mass, together with rising convection currents, provides the District with its rains. Total rainfall amounts average 800mm per annum.

During this period the rainfall is torrential, unpredictable and unreliable. The large quantity of rainwater is normally lost through evapo-transpiration from open surfaces partly due to the bare and dry nature of the ground. This affects availability of water for agriculture and domestic consumption. It is estimated that a volume of between 1.55 to 1.65 cubic metres per square area of the rainfall is lost per annum. It is this rain which supports the one season cultivation of the major food and cash crops in the District. There is therefore a large potential for water harvesting for crop and vegetable cultivation and livestock rearing.

Vegetation

The vegetation is mainly of the Sahel savanna type consisting of open savanna with first swept grassland separating deciduous trees among which may be seen a few broad-leaved and fire-leached tree species. Parts of the forest reserves include Morongo west kuaka and White Volta basin. These are protected areas by local authorities and the District Assembly. The climatic conditions render the District susceptible to bush fires in the dry season and thus exacerbate environmental degradation and poverty in the District.

Geology

The oldest rocks of the north-eastern part of Ghana are those of the pre-Cambrian basement complex. The basement is made up of granite, exposed over the western and northern parts of the District as tabular hills; this holds water all year round making it easy for drilling of borehole and also for small town water systems. The District is noted for it easy access to wet boreholes when drilled except some few areas within the Kulungungu area council.

Hydrology

In the basement complex, ground water is found in weathered mantle in abundant quantities. The quality of ground water from the basement complex makes it ideally suitable for drinking and irrigation purposes. It is therefore not difficult drilling boreholes for point sources and for mechanization, and constructing dams in the area.

Conditions of the Natural Environment

The natural environment over the years has been degraded. The vegetation cover has been reduced. Indiscriminate felling of trees for charcoal and farming activities have impacted negatively on the environment. Other negative environmental practices in the District are:

- 1) Bush Burning
- 2) Bad farming practices leading to soil erosion and leaching
- 3) Overgrazing by animals
- 4) Gravel and sand winning.
- 5) Pollution of the water bodies.

Many of these also constitute the principal causes of disasters in the District in addition to rainstorm. Thus drastic measures need to be put in place to safeguard the environment.

Built Environment

The Built Environment consists of Housing, which is mostly made of switch in the rural areas and block houses in the urban and other big settlements. There are also markets and other socio-economic infrastructure as well as some protected forest reserves.

Demographic Characteristics

Population composition is the description of population according to characteristics such as age, sex, marital status, ethnicity, education and occupation. Demographic change has a broad range of consequence for the development of the Pusiga District. The changes in the District population are mainly through fertility, mortality and migration levels which to a large extent is influenced by age-sex composition. Therefore, this chapter presents details of the demographic characteristics with regards to population size and distribution, age-sex structure, mortality, fertility and migration.

Population Size and Distribution

According to the 2010 Population and Housing Census the total population of the District are 57,677 out of which 27,516 representing 47.7% are males while 30,161 representing 52.3% are females. The regional population growth rate is 1.2%. The projected population for the District for 2013 is 65,649 out of which 31,314 representing 47.7% are males while 34,335 representing 52.3% are females. The age group with the highest proportion of the population is 5-9

representing 16.3%, followed by 0-4 age group representing 15.3%. Majority of the population of the district represents 74.4% who are between the ages 0-34.

From Table 2.1, it can be noted that a greater proportion of the total population of the district which represents 78.0% dwell in the rural areas while 22.0% live in the urban areas. The general sex ratio which represents the number of males per the number of females in the district is 91:2. This means that for every 100 females there are approximately 91.2 males in the district. From table 2.1 however, the male population in the district from age 0-19 is greater than the female population. As a result, the sex ratios in the age categories of 0-19 years are higher than 100. However, from table 2.1, the sex ratio for the other age categories begin to reduce, indicating a drop in the male population as compared to that of the female population from age 20 years and above. The sex ratio from age 20 years and above reduces below 100 to as low as 60.0.

Population by Age, Sex and type of Locality

Age Group	Sex			Sex ratio	Type of locality	
	Both Sexes	Male	Female		Urban	Rural
All Ages	57,677	27,516	30,161	91.2	12,668	45,009
0 – 4	8,849	4,529	4,320	104.8	1,903	6,946
5 – 9	9,373	4,791	4,582	104.6	1,982	7,391
10 – 14	7,961	4,183	3,778	110.7	1,683	6,278
15 – 19	6,108	3,269	2,839	115.1	1,387	4,721
20 – 24	4,077	1,881	2,196	85.7	960	3,117
25 – 29	3,450	1,381	2,069	66.7	795	2,655
30 – 34	3,115	1,209	1,906	63.4	715	2,400
35 – 39	2,842	1,146	1,696	67.6	666	2,176
40 – 44	2,407	1,046	1,361	76.9	546	1,861
45 – 49	1,947	855	1,092	78.3	434	1,513
50 – 54	1,676	746	930	80.2	354	1,322

55 – 59	862	394	468	84.2	178	684
60 – 64	1,222	488	734	66.5	275	947
65 – 69	854	337	517	65.2	157	697
70 – 74	1,207	462	745	62.0	275	932
75 – 79	705	336	369	91.1	146	559
80 – 84	499	225	274	82.1	110	389
85 – 89	280	133	147	90.5	59	221
90 – 94	163	75	88	85.2	28	135
95 – 99	80	30	50	60.0	15	65

Source: Ghana Statistical Service, 2010 Population and Housing Census.

Age dependency Ratio by Locality

Dependency ratio is an age population ratio of those typically not in the labour force and those in the labour force. High dependency ratio of a population has serious policy implications. Table 2.2 shows that the dependency ratio for Pusiga District is 108:2. Dependency ratio in the district varies among the various age groups of 0-14 (child dependency) and age 65 years and above (aged dependency). The general child dependency ratio of 94:5 is obviously higher than the aged dependency ratio of 13:7 since children constitute a greater proportion of the population in the district than the aged. The high dependency ratio (94:5) observed for age 0-14 is partly influenced by out-migration of certain proportion of the population (those within age groups 15-64) to the south in search of greener pasture, leaving behind a large number of dependants. Large dependency ratios however translate into negative economic implications for the district and the country as a whole. The total dependency ratio for the urban (100:8) is lower than the rural (110:4). This is similar in the case of the both child dependency (urban is 88:2 and rural is 86:3) and aged dependency (urban is 12:5 and rural is 14:0)

Age dependency Ratio by Locality

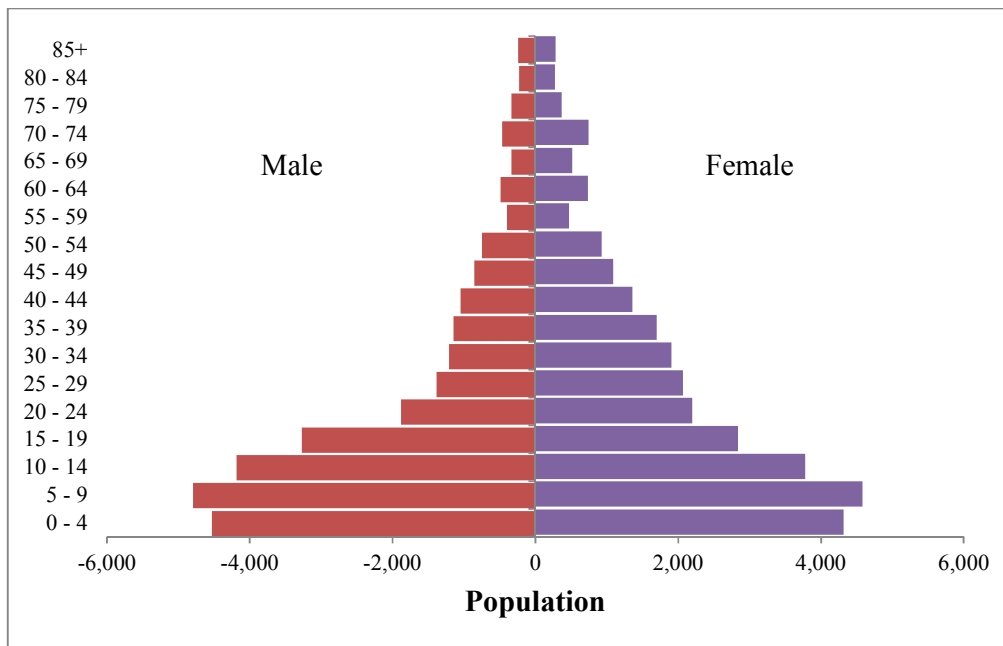
Age/group ratio	Total	Urban	Rural
All Ages	57,677	12,668	45,009
0-14	26,183	5,568	20,615
15-64	27,706	6,310	21,396
65+	3,788	790	2,998
Total dependency ratio	108.2	100.8	110.4
Child Dependency ratio	94.5	88.2	96.3
Aged Dependency ratio	13.7	12.5	14.0

Source: Ghana Statistical Service, 2010 Population and Housing Census.

Age-Sex Structure

Figure 2.1 presents details of the age-sex structure of the population in the district. The pyramid has a broad base which is typical of developing countries, indicating a larger number of youthful population and a narrow top of fewer aged. The tallest bars which represent the highest age cohort falls within age 5-9 years at both male and female population whereas the shortest bars representing the lowest age group cohort falls within 85+. This higher proportion of the population within age group 5-9 indicates that the population in the district has the prospect to grow for a considerable number of years. Figure 2.1 also shows that the proportion of the female population from age 25 and above is higher than the population of males in the same age cohort. As a result, the pyramid indicates the bars at age 25 and above to be broader for the females than the males. This also means that the proportion of males reduces faster than that of the females as the age increases.

Population Pyramid



Settlement Pattern

A significant feature of the population distribution in the District is the dominance of the rural population.

There are seventy five (75) settlements in the District. Most of the communities have populations little above 1000. Four communities have population above 2000. The breakdown is as follows:

Number	Community	Population
1.	Deega	2,756
2.	Widana	2,700
3.	Kulungungu	2,463
4	PusigNatinga	2,437

As these communities are fast growing, it is imperative that measures are put in place to avoid haphazard development in future. Another significant feature of the settlement pattern is its dispersed nature.

As farmlands are incorporated into the settlement structures, houses are built far apart from one another creating a dispersed scene. The dispersed settlement

patterns have brought excessive pressure on the provision of certain basic facilities such as water, sanitation and electricity.

Migration

Migration is common in the District due to its geographical location as it shares boundaries with the republic of Togo to the east and Burkina Faso to the north. A lot of migration occurs during dry season to the neighboring countries as well as to the southern part of Ghana to search for none existing jobs.

State of Sub - Districts

The Pusiga District is divided into five (5) Town and Area Councils and these are;

- Pusiga Town Council
- Kulungungu/Ninkogo Area Council
- Zuabuliga/Nakom Area Council
- Sugudi/Zong-Natinga Area Council
- Widana/Polimakom Area Council

Household Size, Family System and Gender

Household sizes in Pusiga District are fairly large. According to the 2000 Population and Housing Census report, on the average there are seven (7) persons per household. The society is generally patrilineal and traditionally male dominated. Children born to couples, traditionally form part of the man's extended family.

Though generally less active in decision-making, women are traditionally responsible for the bulk of the household activities such as planting, weeding, harvesting and selling, as well as such chores as cooking and fetching water.

This makes gender considerations very important in planning. Women are actively involved in the management and maintenance of water facilities such as pumps and boreholes.

Culture

Ethnicity

The predominant tribes in the District are Kussasis, Bissas and Moshies with the Kussasis constituting the majority follow by the Bissas. However there are a number of migrants from other parts of the country, especially from the south and government workers. There are also migrants from the neighboring countries such as Togo and Burkina Faso. It is however expected that inter-marriages among the diverse ethnic groupings in the District will provide some atmosphere for peaceful co-existence.

Festivals

There are four (4) annual festivals observed in the District. These festivals are celebrated by each clan of the Kussais and other ethnic groups at the beginning of the harvest or after the harvest. On these occasions, behind the merry- making,

libations are poured; fresh fruits and animals are offered to the ancestors and gods of the land. This is done in acknowledgement of their blessing in the past and to implore their help and protection for the future. The festivals increasingly serve as vehicles for uniting and propelling the people in the District for development pursuits.

FESTIVAL	ETHNIC GROUP	PERIOD
Samanpid	Kussasis	December
Zekula	Bissas	March /April
Yong	Kussasis	-

Funerals have become expensive in the District due to show of real wealth and competition. Thus individuals do borrow or sell out their foodstuff, livestock and other properties in order to meet the cost of an in-law's or family member's funeral. The high cost of funerals rites and other associated customary practice is affecting the welfare or the living standards of the several families and individuals.

Marriages

The traditional marriage is the most dominant form of marriage. It entails the distinctive practice or payment of a bride price; the system where the family of the bridegroom meets some marriage expenses including the payment of two (2) to five (5) cows to the family of the bride. Most bridegrooms are not able to pay the dowry and this lead to broken homes while others become permanently indebted to their in-laws. The urge to get cows as dowry lures parents to withdraw female children from school for early marriages. This has seriously contributed to high school dropout among girls.

Funerals

The performance of funerals has of late been quite a source of worry and economic hardship to several families. They have become expensive, due to the show of wealth and competition among the bereaved families. The practice of funeral rites and other associated customary practices is another emerging issue affecting the welfare or the living standards of several families and individuals. .

The instances of individuals going about to borrow or sell out all their foodstuff, livestock and other properties in order to meet the cost of an in-law's or family member's funeral have taken a heavy toll on many people.

Religion

The table below shows the religious composition of the People in the District according to 2010 Population and Housing Census.

RELGIION	NUMBER	PERCENTAGE
No religion	666	1.2
Islam	45,033	78.1
Traditionalist	4,289	7.4
Pentecostal/Charismatic	2,545	4.4
Protestants (Anglican Lutheran etc.)	2,109	3.7
Catholic	1,703	3.0
Other Christian	1,225	2.1
No religion	666	1.2
Other	107	0.2
Total	57,677	100.0

Source: 2010 Population and Housing Census

The predominant religion in the district is Islam representing 78.1% followed by the traditionalists representing 7.4% and Pentecostal/Charismatic representing 4.4% of the total population.

Though people of diverse ethnic and religious backgrounds inhabit in the district, communal spirit is high. All the religious denominations encourage full participation of both men and women. Because of large numbers of women in the district they seem to dominate in all religious groups.

Spatial Analysis

There are seventy five (75) communities spread in the District. Settlement pattern in these communities is the dispersed type. In terms of spatial distribution of socio- economic infrastructure and analysis of both the aggregate and optimum accessibility for existing socio -economic facilities and services shows most of the facilities have low surface accessibility figures. These relate to water and sanitation, health, agricultural extension, marketing, post and telecommunication, banking, security and secondary education.

District Economy

Agriculture is the dominant income and expenditure level of households' occupation of the people, accounting for about 70% of the total employment. Major crops cultivated are millet, sorghum, maize, rice, groundnuts; soya beans leafy vegetables, pepper, water melon, onion and livestock such as cattle, sheep, goats, and donkeys. Foodstuffs such as sweet potatoes and water melon are loaded on donkey carts to Bittou in Burkina Faso and Cinkansse in Togo.

Poultry industry, especially guinea fowl production is quite significant. Farm sizes ranges between one and two hectares as a result of high population density. Farm yields are very low as compared to other parts of the country due to poor soils, unreliable rainfall among others and also the inability of farmers to get enough organic manure or purchase chemicals fertilizers and use modern technology for

agriculture. Thus farmers face greater food insecurity for the greater part of the year.

Beside the few dug outs which are being used for dry season gardening, farmers also dig into the sand of dry riverbeds to get water for dry season gardening. Dry season farming is concentrated on cash crops such as onions, tomatoes, and soya beans, with the former referred to by the residents as the “cocoa of Pusiga District.

The textile industry consists of batik, tie and dye, smock weaving and dress making. The pottery and construction industries also play significant roles in the economic activities of the people.

Small scale industrialization also contributes significantly to the space economy both in output and employment generation. These are mainly in the areas of Automobile (motorcycle) repairs, bicycle repairs and vulcanizing.

Trade in the District is at two main levels; first are big towns mostly outside the Region like Kumasi, Techiman and Tamale and also to neighboring countries like Togo and Burikina-Faso. Trade is centered on goods like plantain, yams, salt, cola nuts and fruits and variety of industrial products from the big towns, while onions, soya beans, shea nut, cashew and livestock are sent to the Ghanaian Towns. Trade with the neighboring countries is also centered on potatoes, soya beans, millet, maize among others.

The second level of trade is to neighboring Districts, like Bawku Municipal, Bawku West and Garu Tempene which is centered on foodstuffs and industrial products.

Manufacturing

The Pusiga District has no large –scale manufacturing industries. It is characterized by small-scale, food processing, craft and manufacturing. The industry is dominated by smock weaving, pottery, blacksmithing, pito brewing and food processing.

Due to its strategic location and proximity to eastern Burkina Faso and Northern Togo as well as easy access to Mali and Niger, there is potential for better trade.

Transportation

The principal modes of transportation are road and foot paths, while modes of transportation includes vehicles (private cars, passenger trucks, taxis, buses and cargo trucks), motor bikes and bicycles, with the last two being the predominant. However, donkey carts are also used as means of transport. The impact of motorized transportation in the distribution of goods and services is still minimal, but has the potential to grow if there is provision of good roads in the entire district.

District and the Region

Within the district, there is only taxi service between Pusiga and Widana while other settlements rely on motor bike or bicycles. However there exist taxis and mini buses services available to Bawku as well as transit to Bolgatanga daily and also Ghana Private Road Transport Union (GPRTU) transport services is available daily to Kumasi.

Agro Processing

Processing of foodstuffs and cash crops is a common feature of the local economy. The major small-scale industrial activities include the following:

Shea butter extraction;

Groundnut oil extraction;

Pito brewing;

Dawadawa processing;

Weaving;

Dressmaking; and

Pottery

Most of these small-scale industries are either one man business or group based and hardly employ people. The groups based are mostly engage in the processing industry and funded by both government and non-government organizations.

Commerce

There are three (3) major markets in the District, namely: Pusiga, Widana and Kulungungu.

Pusiga District is regarded as the commercial nerve center of the District as well as the Upper East Region. Additionally Pusiga District enjoys the advantage of being a border District to Garu- Tempane and Bawku Municipal and has three- day market cycle which plays significant role in the local economy. Commodities traded ranges from the foodstuffs to livestock and manufactured goods.

Construction Industry

There are contractors and suppliers in the District. Their capacities need to be built up in order for them to compute favorably with other contractors for jobs.

District Revenue and Expenditure Pattern

This section gives an analysis of the District administration capacity in generating revenue to finance development projects. It also looks at the expenditure pattern of the District in relation to its revenue generation. It finally examines the existing revenue collection system of the District and its problems.

Sources of Revenue

Revenue to the District is generated from both internal and external sources. The internally generated revenue comes from sources such as rent, land, fees/fines, licenses and investments. On the other hand, the District Assembly Common Fund

(DACF) and donor funds constitute the main source of external revenue. The table below shows the various sources of internally and externally generated revenues and their contributions to the District total revenue from 2012 – 2013.

Sources of Revenue to Pusiga District Assembly 2012-2013

ITEM	2012	2013
	ACTUAL GHC	ACTUAL GHC
IGF	41,018.30	119,246.40
DACF	695,474.73	616,582.98
DDF	-	312,518.00
MP's CF	-	84,431.06
PWD	-	43,489.56
GSFP	-	800,394.67
GOG DEPTS	-	24,466.24
UNICEF	465.00	
STWSSP	-	-
HIV/AIDS/MSHAP	-	-
RURAL ENTERPRISE		
TOTAL	736,958.03	2,001,128.91

Source: Pusiga District Assembly

It can be observed from the above table that the District's total revenue saw an upward increase in the 2013 financial year. It is also explicit that the District is highly dependent on external sources of revenue which accounts over 90% of the total generated revenue. The District also benefited from District Development Facility Fund (DDF) as a result of its mother Bawku Municipal Assembly qualification in the 2010 Functional Organizational Assessment Tool (FOAT).

Though internally generated revenue shows an increasing trend from 2012 to 2013, its contribution to total generated revenue indicates the abysmal performance of internal revenue generation. However there is great room for improvement and the Assembly could do better than this since the District has a huge revenue potential.

The above trend has serious implications for the District's development drive. This is because development projects are likely to grind to a halt in the case of delays in the release of funds from external sources. Thus, there is the arguent need for the District to strengthen its revenue collection unit and also invest into ventures that have the potential of high revenue turnover.

Revenue Mobilization

Revenue mobilization in the District is done through the use of commission collectors, revenue tax forces and Area Council Staff. As observed earlier the District depends heavily on external sources of revenue to finance its development projects. This problem is traceable to a plethora of problems facing the revenue collection unit of the District. Problems such as the lack of logistics for revenue collectors; inadequate civic awareness on tax obligation; public abuse and humiliation of tax collectors; tax evasion; inadequate tax collectors and limited number of revenue sources have contributed in no small measure to the abysmal local revenue mobilization of the District.

This further brings to light the need for the capacity of the revenue collection unit of the District to be strengthened in terms of logistics and personnel to enable it to perform its avowed functions effectively.

Expenditure

The main areas of expenditure of the District can be conveniently grouped into capital and recurrent. The capital expenditure of the District includes all social and economic investments while the recurrent expenditure entails expenditure made for the smooth running of the District administration. Table below shows the expenditure pattern of the District from 2012 – 2013.

Expenditure pattern

S/ N	ITEM	2012	2013
1	Compensation of employees	-	5,220.00
2	Use of goods&& services	411,594.71	817,144.08
3	Other Charges	-	1,349.24
4	Other allowances	-	5,585.75
5	Travel & Transport	-	109,086.78
6	Special services	-	106,160.40
7	Miscellaneous and other expenses	930.00	178,909.75
8	Repairs & maintenance	-	77,572.49
9	Training, seminars and	-	49,947.28

	conferences		
10	Non- residential buildings	-	83,953.16
11	Transport-Equipments	-	29,920.00
	Utilities	-	59,005.52
	Wages and Salaries(IGF)	6,014.43	-
	Non-Financial Assets	70,984.00	188,638.95
TOTAL		489,523.14	1,712,493.40

Source: Pusiga District Assembly

Revenue- Expenditure Matching

The revenue expenditure matching of the District has been analyzed to ascertain whether the District Assembly has the capacity of generating revenue to finance development projects. This is also to give information about the surplus made or the deficits incurred by the District. The table below shows the revenue and expenditure matching and their associated deficit/surplus from 2012 – 2013 for the District.

Revenue- Expenditure Matching

ITEM	YEAR		TOTAL GHC
	2012 GHC	2013 GHC	
REVENUE	736,958.03	2,001,128.91	2,738,086.94
EXPENDITURE	489,523.14	1,712,493.40	2,202,016.54
SURPLUS/DEFICIT	24,434.89	288,635.51	536,070.40

Source: Pusiga District Assembly

Revenue and Expenditure for the Period 2012 to 2013

The table below matches revenue and expenditure items of the district from 2012 to 2013. It can be observed that the district only had two sources of revenue in 2012 that is Internally Generated Fund (IGF) and District Assembly Common Fund. Though the District seem to be recording surplus because it's been new it could not spend much because all the necessary conditions to take off were not in place. The District recorded deficit in 2013 on the IGF. There is therefore the need for management to track in order not to spend beyond the revenue received for the year.

ITEM	2012			2013		
	REVENUE GHC	EXPENDITURE GHC	SURPLUS/ DEFICT GHC	REVENUE GHC	EXPENDITURE GHC	SURPLUS/D EFICT GHC
IGF	41,018.30	24,746.63	16,271.67	119,246.40	123,284.35	-4,037.95
DACF	695,474.73	464,776.51	230,698.22	616,582.98	558,974.80	57,608.18
DDF	-			312,518.00	232,379.81	80,138.19
MP's CF	-			84,431.06	-	84,431.06
PWD	-			43,489.56	-	43,489.56
GSFP	-			800,394.67	773,388.20	25,156.47
UNICE F	465.00		-	-	-	-
GOG DEPTS	-			24,466.24	24,466.24	-
TOTAL	736,958.03	489,523.14	246,969.89	2,001,128.91	1,712,493.4	243,295.95

Source: Pusiga District Assembly

Unemployment and Underemployment

Despite the high level of cross border trade, the level of unemployment is very high in the District, especially among the youth. Agriculture pursuits dominate the employment industry and accounting for over 60% of the active population. Unemployment is worse during the prolonged dry season, when no farming activities take place except in few communities where there are dug out for dry season gardening. This compels most of the youth to migrate to the southern sector of the country in search of jobs. Beside the Agricultural employment sector, other sectors that offer employment opportunity to the people include public service and petty trading.

Investment/Economic Opportunities

Investment opportunities/economic potentials consist of:

1. Agriculture-: vast potentials in livestock, poultry, shea nut, cashew, onion, water melon, soya bean, mango, groundnuts, potato among others.
2. Small scale industries including agro processing like;

- Pito Brewing
 - Groundnut Oil Extraction
 - Pottery
 - Shea butter Processing
 - Dawadawa Processing
3. Manufacturing Industries like;
- Welding and fabrication industry
 - Motor /bicycle repairs
 - Carpentry and masonry
 - Weaving and dress making
 - Leather and textile
 - Black smiting
 - Pottery
 - Local soap manufacture
 - Food processing

Tourism and Hospitality Industry

There are very attractive physical and cultural landscapes worth developing into tourist centers. Namely: the Kulungungu bomb site and the Naa Gbewaa Shrine.

Kulungungu Bomb Site

The Kulungungu Bomb site is where the first president of Ghana Dr. Kwame Nkrumah survived a grenade attack on 1st August, 1962 when he was returning from a meeting with his Upper Volta (Burkina Faso) colleague Mourice Yameogo. This site even though is marked by a burst of Dr. Kwame Nkrumah a lot need to be done to develop the site.

Naa Gbewaa Shrine

The Naa Gbewaa Shrine at Pusiga is a spot in the forest, near Gbewaa College of Education, where Naa Gbewaa, Chief and ancestor of the Mole Dagbani group is located. Traditionally, one needs to contact the Tindana of Pusiga with cola nuts and a fowl for sacrifice at the shrine during a visit. There is a spiritual snake that lives within the shrine and appears from time to time as a symbol of the late Naa Gbewaa spiritual powers. The area is now fenced but there is the need to improve the facilities in the shrine to attract both local and international tourist.

Hospitality Industry

There is only one guest house in the District found in Pusiga community. There are beer bars and restaurants in the District.

Financial Institutions

There are two Banks in the District, the BESSFA Rural Bank and First National Bank. There is one credit union which is engaged in savings, mobilizations and provision of credit facilities to both private and public operators

Communication

There are eight (8) telephone masks in the District. This includes Vodafone, Tigo, Airtel and MTN and Glo is on-going at Widana. People in the District communicate through the services of these companies. Apart from facilitating communication, their presence also provides employment to a few individuals. However, the network sometimes is very poor due interference of Togo and Burkina Faso networks, as a result, callers and recipients are both charged international call rate any time the interference does occur and sometime the network is not accessible to users.

Infrastructure Distribution

Economic Infrastructure

Roads: The District has a road length of 139km with 20km being high way and 92km feeder roads of which 36km is made up of gravel surface and 56km with earth surface. Many settlements remain unlinked and residents have to travel a distance of 3-5 kms to get to the nearest motor road, thus the need to enhance the road network to facilitate development.

Road Infrastructure

Roads in the District are mainly feeder roads and two (2) highways- Missiga Kulungungu road and Missiga-Polimakom road. A total of 25 Kms of roads were graded and 40 Kms of roads were opened up for the period 2012-2013. The District has serious deficiency in road network. It shares border with Togo and Burkina Faso and has no tide road. The road network needs to be improved to easily link up communities in the District, and other sister Municipal/Districts in the region, the country as well as their neighboring countries. The total engineered roads =65km whiles the rest of other roads in the District are not engineered.

Energy

Given the nature of the vegetation in the District, fire wood is increasingly becoming a problem for most households. Some people have resorted to the use of maize stalks, gas and charcoal for cooking purposes. But 70% of the populace still use fire wood, 25% rely on charcoal and 5% on gas for cooking. The high percentage of fire wood and charcoal usage will increase to the depletion of the vegetation. There are fifteen (15) fuel filling stations operating in the District, three 3 in Pusiga Township, 11 at Widana and 3 at Kulungungu. On hydro electricity, out of seventy five (75) communities in the District only four communities are connected to the national grid even not all parts of these four communities are connected. The communities are Pusiga, Widana, Kulungungu Bulugu. Approximately these assume 15% coverage of electricity.

Justice and Security

Security organizations in the District include the Ghana Police Service, Fire Service, Custom Exercise and Preventive Service (CEPS), the Ghana arm forces and Immigration service. They provide protection to both persons and property.

Some Challenges of the Security Services

- ❖ Inadequate accommodation
- ❖ Inadequate means of transport
- ❖ Inadequate personnel
- ❖ Fuel and fertilizer Smuggling
- ❖ Uncooperative nature of the populace

Women Participation in Governance

Women participation in local governance is very limited; out of 23 Assembly memberships only 3 are women and, one (1) elected Member of Parliament and has no voting rights at the District Assembly and two (2) appointed. The situation is not very different in the constitution of unit committees in the District and committees and sub-committees of the Assembly.

Generals Problems Of Good Governance

- ❖ Inadequate Capacity for District Assembly Staff
- ❖ Inadequate residential and office accommodation for staff
- ❖ Lack of a law Court
- ❖ Non-existence of some decentralized departments
- ❖ Inadequate resources for Assembly persons
- ❖ Inadequate and unreliable Sources of funding
- ❖ Ineffective Area Council
- ❖ Inadequate Funding
- ❖ Inadequate staff both in numbers and skills
- ❖ Inadequate equipment/logistics
- ❖ Inadequate data for planning and decision making
- ❖ Slow pace of decentralization
- ❖ Low participation in governance among the populace

The Administration of the District

Governance in the District is both modern and traditional. The former is represented by the District Assembly created by LI 2145 with the framework of the Local Government Act of 1993 (Act 462), while the later is by chiefs (Traditional rulers)

The District Assembly

At the apex is the general assembly which is the highest administration and legislative body in the District. There are twenty one (21) Members and consist of

two (2) females and nineteen (19) males. Fifteen (15) elected, six (6) appointed by Central Government and one (1) Member of Parliament (who has no voting right) and the Hon. District Chief Executive bring the membership to twenty three (23). The house is headed by a Presiding Member. The house meets to deliberate on issues concerning the District, passes by-laws, approve development plans, projects, programmes and schemes as well as budget. Another significant role played by the house is to confirm the president's nominee for the position of Chief Executive of the District.

The Assembly has two main committees – The Executive Committee is chaired by the District Chief Executive, whilst the Complaints and Public Relations Committee is chaired by the Presiding Member, the District Security Committee headed by the District Chief Executive and the District Entity Committee among others.

The Executive Committee

The Executive Committee is made up of seven members (that is, one third of the general house) chaired by the District Chief Executive. The District for now is operating with the five (5) statutory Subs –Committees. These include:

1. Works;
2. Development planning;
3. Social services;
4. Justice and Security;
5. Finance and Administration.

The departments of the Assembly collaborated well with the Assembly by participating in Assembly meetings, assisted in the implementation of programmes of the Assembly and submitted periodic reports to the Assembly.

Some of these Departments/Institutions are located in the Bawku Municipal Assembly whilst overseeing the Pusiga District example Fire Service, NHIS, Youth Employment, Birth and Death Registry among others.

Traditional Authority

The Traditional Authority is represented by the Pusiga Traditional Council under the presidency of the Pusiga Naba. The membership of the council is made up of the sub chiefs of important settlements and advisors to the Pusiga Naba. Matters concerning chieftaincy, culture and tradition are handled by the traditional council.

Social Services

Education

The importance of education in the social and economic development of the people cannot be over emphasized. The situation of education in the District is as indicated below.

Educational Facilities

TYPE OF EDUCATIONAL INSTITUTIONS			
PUBLIC OWNERSHIP	NO.	PRIVATE OWNERSHIP	NO
Pre-school	38	Pre-School	3
Primary School	38	Primary School	3
Junior High Secondary (JHS)	12	Junior High School	1
Senior High Secondary (SHS)	0	Senior High School (SHS)	1
Technical Institute	-	Technical Institute	-
Vocational Schools	-	Vocational Schools	-
College of Education	1	College of Education	-
Nurses Training College	-	Nurses Training College	-

SUMMARY OF PUBLIC BASIC SCHOOLS ENROLMENT AND STAFFING FIGURES FOR

2012/2013 ACADEMIC YEAR

NO	LEVEL	NO. F SCHOOLS	ENROLMENT			TEACHERS				
			BOYS	GIRLS	TOTAL	TRAINED		UNTRAINED		TOTAL
						M	F	M	T	
1	KG	38	1,570	1,574	3,144	3	4	5	19	31
2	PRIMARY	38	6,527	5,825	12,352	58	19	75	23	175
3	JHS	12	1,733	1,462	3,195	36	3	19	1	59
	TOTAL	88	9,830	8,861	18,691	97	26	99	45	265

SUMMARY OF PRIVATE BASIC SCHOOLS ENROLMENT AND STAFFING FIGURES FOR

2012/2013 ACADEMIC YEAR

NO	LEVEL	NO. F SCHOOLS	ENROLMENT			TEACHERS				
			BOYS	GIRLS	TOTAL	TRAINED		UNTRAINED		TOTAL
						M	F	M	T	

1	KG	5	240	212	452	0	0	2	5	7
2	PRIMA RY	5	467	329	796	0	0	17	6	23
3	JHS	2	26	25	51	0	0	7	1	8
	TOTAL	12	733	566	1,299	0	0	26	12	38

The information on education shows that educational infrastructure in the District is woefully inadequate. At the primary level 12,352 pupils occupy 182 classrooms which give a ratio of 1:68 pupils. At the JHS level 3,246 pupils occupy 36 classrooms which give a ratio of 1:89. From the table above more than 50% of the schools in the District have enrollment over 45 pupils in a class which is above the standard class room average enrollment, as result of this every facility in the schools such as furniture, classroom blocks, water, sanitation facilities among others are over utilized.

On gender, it shows that at the lower primary girl- child enrollments are always higher than that of boys while at upper primary the enrollments reduces drastically and that gives a gender parity index of 0.97% females against 99.03 males.

Teacher pupil ratio stands at 1:75. Teachers find it difficult to manage these high enrollments in the schools which do not promote effective teaching and learning.

On Water and sanitation facilities, out of 48 schools, 25 have access to sanitation and 24 have access to potable water representing 52% and 50% respectively.

- ❖ Implemented DEOC decisions to improve educational standard
- ❖ Undertook monitoring and supervision
- ❖ Capacity building of staff
- ❖

Challenges

- ❖ Lack of logistics for monitoring and supervision
- ❖ Inadequate means of transport
- ❖ Lack of office accommodation
- ❖ Lack of residential accommodation
- ❖ Inadequate trained Teachers
- ❖ Teachers absenteeism
- ❖ Poor attitude of some Teachers
- ❖ High dropout rate at the upper primary and JHS levels especially girl child
- ❖ Inadequate classrooms
- ❖ Dilapidated structures in some schools
- ❖ Inadequate furniture
- ❖ Inadequate access to potable water supply

- ❖ Inadequate sanitation facilities
- ❖ Inadequate teaching and learning materials
- ❖ Inadequate incentives for teachers in deprived communities

GHANA SCHOOL FEEDING PROGRAMME

The Ghana School Feeding Programme operates in the District. As a result, school pupils have a hot meal a day and it has increased enrolment and retention. Also nutritional status of children has improved but not adequate. The table below shows the list of beneficiary schools in the District.

GHANA SCHOOL FEEDING PROGRAMME BENEFICIARIES SCHOOLS ENROLLMENT 2012/2013 ACADEMIC YEAR

NUMBER	NAME OF SCHOOL	NO. OF PUPILS
1.	Adabia Primary School	417
2.	Kunjam Primary School	428
3.	Sugudi Primary School	445
4.	Widana Primary School	1,103
5.	Deega Primary School	906
6.	Hidayatul Primary School	567
7.	Kogadim Primary School	527
8.	Yariga Primary School	407
9.	Daware Primary School	903
10.	Bimpiela Primary School	657
11.	Belintanga Primary School	339
12.	Nakom Primary School	1,021
13.	Sarabogo Primary School	465
14.	Zuabuliga Primary School	596
15.	Nakambo Primary School	638
16.	Ninkogo Primary School	1,219
17.	TindanNatinga Primary School	401
18.	Koose Primary School	522
19.	Tainchungu Primary School	302
20.	Kultamise Primary School	492
21.	Tes-Natinga Primary School	751
22.	Pialoko Primary School	449
23.	Gbewaa Primary School	915
24.	Bengula Primary School	645
25.	Pusiga Practice 1 Primary School	720
26.	Pusiga Practice 2 Primary School	556
27.	Kulungungu Primary School	1,027
28.	Gambudugu Primary School	445
29.	Latega Primary School	328

30.	Bulugu Primary School	500
31.	Kolpielogo Primary School	312
GRAND TOTAL		19,003

Source: Pusiga District Assembly

The total number of school pupils fed under Ghana School Feeding programme was 19,003 as at 2012/2013 academic year.

Health

Using a maximum acceptable access time of 30minutes for hospital and 25minutes for health center facilities, Zong -Natinga Area Council and Zuabuliga Area Councils have very low surface accessibility to health facility services.

Health Infrastructure

TYPE OF FACILITY	NO
Hospital (Private)	1
Health centre	3
Clinic	1
CHPS	5
Private Maternity Home	-
Private Clinic	0

Source: Annual Report Pusiga District Health Directorate 2013

Status of Existing health Infrastructure

The District has a total of five (5) sub-districts with ten (10) health facilities. It has three (3) health centres (one CHAG, one (1) private clinic that is: Akunye memorial) and five (5) CHPS compounds. The table below shows the breakdown of health facilities. All the public health facilities need expansion to meet the increasing health needs of the population, and extensive renovation due to their dilapidated nature.

Health Facilities in the District

1 Hospital	4 Health Centres /Clinics	5 CHPS Compounds
Akunye Memorial Hospital (Private)	Pusiga H/C (Gov) Widana H/C (CHAG, Presby) Kulungugu H/C (Gov) Kultamise Clinic (Gov)	Nakom CHPS (Gov) Zuabulga CHPS (Gov) Sarabogo CHPS (Gov) Kultamise CHPS (Gov) Tindanatinga CHPS (Gov)

Source: Annual Report Pusiga District Health Directorate 2013

Staff Strength

The District has total staff strength of one hundred and fourteen (114) excluding the casuals from the Ghana Health Service (GHS) facilities out of which fifty three (53) staff representing 46.5% belong to the only private health facility in the district.

Within the Ghana Health Service (GHS) circles only sixty three (63) staff is permanent with sixteen (16) casuals engaged to augment the low staffing. These casuals are mainly support staff.

General Staffing Situation of District (GHS, CHAG & Private), 2013

	Staff Category	No.	Remarks
1	Doctors	2	Private hospital
2	Nurses (all categories)	68	13 Private
3	Medical/Physician Assistants	3	1 Private, 1 CHAG
4	Registered General Nurses	9	3 Private
5	Enrolled Nurses/Health Assistants	15	7 Private
6	Midwives	8	1 private, 2 CHAG
7	Community Health Nurses/CHOs	29	
8	Public Health Nurses	1	
9	Community Psychiatry Nurses	2	
10	Disease Control Officers	4	
11	Nutrition officers	2	
12	Health Information Officer	1	
13	Records staff	12	12 Private, 2 CHAG
14	Accounts staff	3	2 Private
15	Dispensary staff	11	6 Private
16	Laboratory staff	8	4 Private
17	Drivers	3	1 CHAG, 1 Private

Source: Annual Report Pusiga District Health Directorate 2013

Table 1: Status of GHS Human Resource (Permanent & Casuals), 2013

STAFF CATEGORY	No. at post	No. permanent	No. of casuals	Range of date engaged	Budget - monthly (GH¢)
Physician Assistant	1	1	0		
Community Health Nurses	32	32	0		
Midwives	5	5	0		
Staff Nurses	3	3	0		
Pharmacy Technician	1	1	0		
Enrolled Nurses	6	6	0		

Environmental Health Officers	1	1	0		
Environmental Health Assistants	3	3	0		
Senior Nursing Officer (PH)	1	1	0		
Driver	1	1	0		
Field Technicians (DC)	2	2	0		
Technical Officers (DC)	2	2	0		
Nutrition Officers	2	2	0		
Technical Officer (HI)	1	1	0		
Technical Officer (Laboratory)	1	1	0		
Finance Officer	1	1	0		
Watchman	2	0	2	2009 to date	700.00
Security Officer	1	0	1	Jan 2007 to date	350.00
Medical Records Assistants	3	0	3	2 nd Feb 1996 to date	1200.00
Medicine Counter Assistants	1	0	1	Sep 2010 to date	550.00
Laboratory Assistant	1	0	1	Sep 2010 to date	600.00
Health Promotion Assistants	4	0	4	1 st Aug 2013 to date	1600.00
Orderly	3	0	3	1994 to date	1050.00
Typist	1	0	1	1 st Dec 2013 to date	350.00
TOTAL	79	63	16		6,400.00

Source: Annual Report Pusiga District Health Directorate 2013

- Doctor Population Ratio is 1:33,219 (Annual Report Pusiga Health Directorate 2013)
- There is only one private Hospital in the District. Another nearest hospital is about 18 kilometers away in Bawku.
- The Nurse Population Ratio is 1:11,545 (Annual Report Pusiga Health Directorate 2013)

In the absence of a public hospital there are only three health centres in the District playing the role of a hospital, which is ill equipped to function. As such these health centres, which are located in Pusiga, Kulungugu and Widana need to be well equipped whiles the Pusiga health centre be upgraded into a District Hospital.

There is the need to provide certain logistics such as motorbikes, fridges among others, for the health centres and more personnel to improve the health situation in the District.

The District, because of her geographical location falls within the Meningitis belt is therefore prone to CSM. The common diseases are malaria, T.B, HIV/AIDS among others.

Causes of OPD Attendance

Table 2: Top ten causes of OPD Attendance

Sr. No.	2010			2011			2012			2013		
	Disease/Condition	No.	%	Disease/Condition	No.	%	Disease/Condition	No.	%	Disease/Condition	No.	%
1	Malaria	51879	66.7	Malaria	38328	60.5	Malaria	43139	59.9	Malaria	68482	52.6
2	ARI	8607	11.1	ARI	7991	12.6	ARI	9577	13.3	ARI	11707	9.0
3	Diarrhoea	2710	3.5	Diarrhoea	2581	4.1	Diarrhoea	2735	3.8	Diarrhoea	7235	5.6
4	Skin diseases	1473	1.9	Acute UTI	1498	2.4	Skin diseases	2630	3.6	Rheumatism & joint pains	5103	3.9
5	Intestinal Worms	1074	1.4	Skin diseases	1488	2.4	Rheumatism & joint pains	1128	1.6	Typhoid Fever	4611	3.5
6	Typhoid Fever	943	1.2	Rheumatism & joint pains	1112	1.8	Intestinal Worms	967	1.3	Skin diseases	4507	3.5
7	Rheumatism & joint pains	884	1.1	Intestinal. Worms	882	1.4	Hypertension	895	1.2	Acute UTI	2502	1.9
8	Anaemia	867	1.1	Pneumonia	664	1.0	Typhoid	866	1.2	Hypertension	2374	1.8
9	Hypertension	657	0.8	Anaemia	617	1.0	Acute UTI	857	1.2	Home Acc.& injuries	1469	1.1
10	Pneumonia	490	0.6	Hypertension	597	0.9	Anaemia	773	1.1	Acute Eye Infection	1421	1.1
	All others	8154	10.5	All others	7550	11.9	All others	8506	11.8	All others	20838	16.0
	Total OPD New Cases	77,738	100.0	Total OPD New Cases	63,308	100.0	Total OPD New Cases	72,073	100.0	Total OPD New Cases	130,249	100.0

Source: Annual Progress Report Pusiga District Health Directorate 2013

Malaria, ARI and diarrhoea have become the leading causes of OPD attendance in the district for the four consecutive years, 2010 to 2014 ranking 1st, 2nd and 3rd respectively. Malaria alone constituted 62.9% in 2010, 58.2% in 2011, 53.1% in 2012 and 48.0% in 2013 of all cases seen at the OPD. Despite the numerous interventions to control malaria like: free distribution of ITN, Intermittent preventive treatment with SP, Integrated Community-based Case Management of childhood illness (I-CCM) among others, the problem still persists. However, the number of malaria cases has reduced over the years though is still the leading cause of OPD attendance in the district. Below is a table showing the top ten causes of attendance in the district:

Trend of cases under disease surveillance

Disease	2010		2011		2012		2013	
	Suspected	Confirmed	Suspected	Confirmed	Suspected	Confirmed	Suspected	Confirmed
Measles	—	—	—	—	0	0	18	9
YF	0	0	0	0	0	0	0	0
AFP	0	0	0	0	0	0	0	0
CSM	0	0	0	0	0	0	0	0
TB	—	16	—	17	3	3	16	16
Leprosy	—	—	—	—	0	0	3	3
Human Anthrax	—	—	—	—	0	0	0	0
Cholera	—	—	—	—	0	0	0	0
Guinea worm	—	—	—	—	0	0	1	0
Yaws	—	—	—	—	0	0	0	0

Source: Annual Report Pusiga District Health Directorate 2013

Case detection and notification is generally not very encouraging. This could be attributed to the following factors:

- Some clinicians not probing more into diseases of public health concern
- Inadequate laboratory facilities and equipment

Staff not doing active surveillance 6.2 Measles Outbreak

During the year, eighteen (18) measles cases were suspected out of which nine (9) were confirmed. Some of the cases were from across the border (Cinkasse , a suburb of Togo). This constituted an outbreak. The reporting facilities were Akunye Memorial Hospital and Widana Health Centre.

Extensive health education within the affected communities, mop-ups and case management were carried out.

Tuberculosis Control Program

Performance in TB indicators was among the best five performance areas in the district during the period under review.

TB Control Activities

The following activities carried out under TB control in the district:

- Monitoring and supervision
- On-the-job coaching and support visit
- TB quarterly performance review meetings
- Refresher training
- Provision of enablers package for staff and TB clients using funds and fortified foods received from the RHD

6.3.2 TB Case Notification and Holding

Tuberculosis (TB) case notification has not been encouraging since 2011. The district suspected sixteen (16) cases in 2010 and increased it to seventeen (17) cases in 2011, but reduced drastically to three (3) cases in 2012. However, in 2013 it improved considerably to sixteen (16) cases. Below is the table for the case notification.

On the other hand all TB cases put on treatment have successfully been followed up to complete their treatment giving 100% treatment success rate since 2010. Seven of the 2013 cases are still on treatment, but with high compliance with treatment.

Table 3: Tuberculosis case notification and holding, 2010-2013

Tuberculosis case notification					
Indicator	2010	2011	2012	2013	Target
No. of cases notified	16	17	3	16 (32%)	50 (70%)
No. bacteriological positive	5	6	0	3	
No. bacteriological negative	11	11	3	13	
Number on treatment	0	0	0	7	
Number completed treatment	11	11	3	9	
Number cured	5	6	0	1	

Source: Annual Report Pusiga District Health Directorate

HIV/AIDS and STIs Control Program

PMTCT and HTC

The district has adopted a way of incorporating PMTCT into various activities such as CHO training, newly posted Midwives on the job training and coaching.

Table 4: Indicators of PMTCT for 2010 - 2013

Indicators	2010	2011	2012	2013
ANC Registered PMTCT	3,101	3,153	3,231	2,978
Pregnant Women received pretest	2,720	2,864	2,690	2,664

counseling				
Pregnant Women tested for HIV	2,720	2,864	2,690	2,664
% Pregnant Women tested for HIV	87.7	90.8	83.3	89.5
Pregnant Women received posttest counseling	–	–	2,499	2,135
Pregnant Women tested +ve	6	9	0	2
Pregnant Women retested +ve at 36 weeks	–	–	3	0
Number of mother put on drugs	–	–	1	0
Number of children put on drugs	–	–	0	0

Source: Annual Report Pusiga District Health Directorate 2013

HIV Testing and Counseling (HTC) services were carried in almost all facilities providing PMTCT services.

- Inadequate counselors in the district
- Irregular supply of test kits
- Language barriers

Syphilis Screening

Syphilis testing is also carried out in all the facilities conducting PMTCT services for pregnant women. The service is however challenged with the irregular supply of test kits from the RMS.

Malaria Control Program

Malaria has been a leading cause of morbidities over the years in Pusiga district. Malaria accounted for 66.7% in 2010, 60.5% in 2011, 59.9% in 2012 and 52.6% in 2013 of all cases seen at the OPD (DHIMS II). Even though the proportion is reducing, the number of malaria cases continues to increase over the years. There have been several attempts aimed at reducing the disease burden till it is no longer of public health significance. Despite the numerous interventions to control malaria like: free distribution of ITN, Intermittent preventive treatment with SP, Integrated management of childhood illness (ICCM) among others, the problem still persists. The table below indicate malaria situation from 2010 to 2013.

Table 13 Malaria case situation: 2010 - 2013

Indicators	2010	2011	2012	2013
Total OPD new cases	77,738	63,308	72,073	130,249
Proportion of OPD cases attributable to malaria	51,879 (66.7%)	38,383 (60.5%)	43,139 (59.9%)	68,482 (52.6%)
Proportion of OPD malaria cases tested		–	19,229 (44.6%)	32,937 (48.1%)
Proportion of OPD malaria cases tested positive	11,019 (22.1%)	11,223 (29.2%)	14,719 (34.1%)	26,376 (38.5%)
Malaria test positivity rate (%)			76.5	79.2

Number of RDTs used		–	–	12,189
Proportion of malaria cases put on ACTs		37,255 (97.1%)	32,056 (74.3%)	26,376 (38.5)

Source: Annual Report Pusiga District Health Directorate

Expanded Program on Immunization

Expanded Program on Immunization (EPI) activities are carried out in all the health facilities in the district except Kultamise Clinic (GHS). Kultamise Clinic, where the solar vaccine fridge is installed and used by Kultamise CHPS does not run EPI activities because of its proximity (about 1.5km) to the Kultamise CHPS. Communities around the Clinic are therefore catered for by Kultamise CHPS. Akunye Memorial Hospital (Private) started running immunization services in the second half year of 2013 when the DHD redeployed a CHN from Pusiga Health Centre there.

The coverage of all the EPI antigens, except measles 2 (newly introduced) and TT2+ for pregnant women exceeded the 100% annual target. Performance in all antigens improved over the previous years' except TT2+ for pregnant women.

The reasons for the generally good performance in EPI include:

- **Commodities:** No vaccine stock outs experienced during the period under review
- **HR:** HFs with staff providing immunization services increased from 90% to 100% in 2nd half of 2013
- **Access:** Health Facilities providing vaccination services increased from 90% to 100% in 2nd half of 2013, plus
 - ✓ Improved fuel supply to facilities by DHD
 - ✓ Missed Outreach clinics rescheduled
 - ✓ Date & time for vaccination schedules agreed with community members and reminders sent to communities before each monthly session

Sub-districts (Nakom/Zuabuliga and Sarabogo) that do not have cold chain facilities for storage of vaccines at the facility level generally recorded the least EPI service coverage. Of target interest is Nakom/Zuabuilga sub-district that consistently recorded a drop in almost all antigens. Only Widana sub-district recorded over 100% coverage in all antigens, the performance of which hinges on foreign (Togo) patronage.

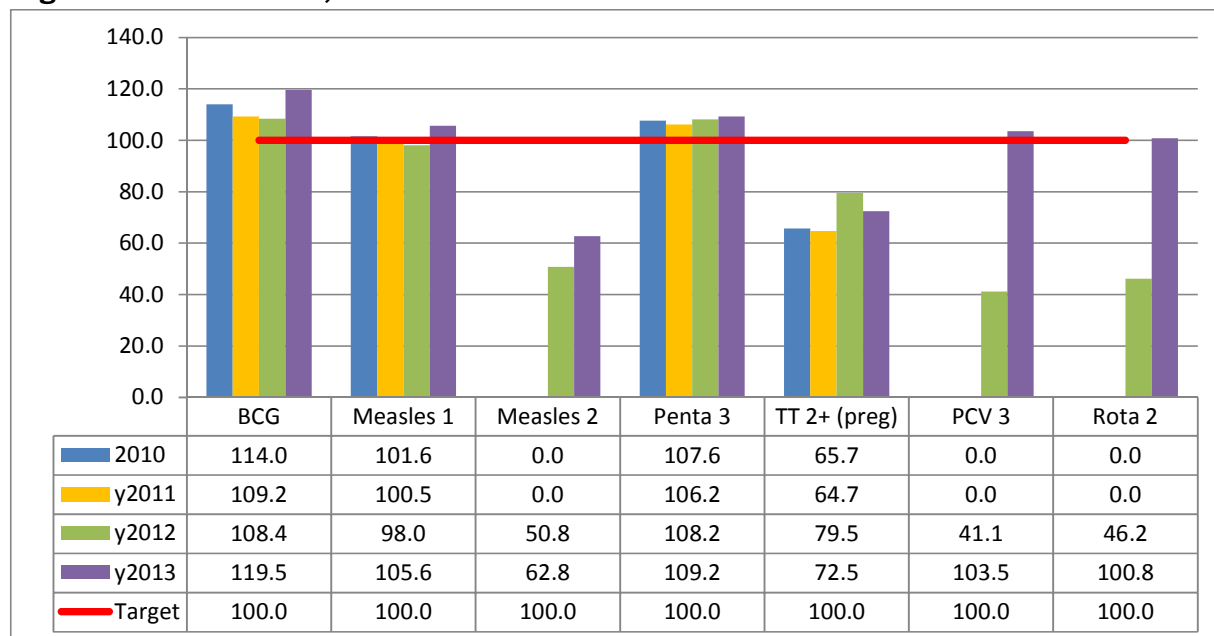
In addressing the low coverage in Nakom/Zuabuliga and Sarabogo sub-districts the district will in the medium term

- Provide gas for powering vaccine fridges,
- Upgrade solar at Nakom CHPS to power a vaccine refrigerator, and re-install solar in Sarabogo & Zuabuliga CHPS,
- Liaise with the RHD to provide vaccine solar fridges for Nakom, Zuabuliga and Sarabogo CHPS

And as a long term measure,

- Liaise with DA to connect facilities to the National grid

Figure 1: EPI services, 2010-2013



Source: Annual Report Pusiga District Health Directorate

Nutrition

Vulnerability (Nutritional) Issues

The program areas under nutrition are largely integrated in other programs in the district. The nutrition program intervention areas include:

- Nutrition and Malaria Control for Child Survival Project (NMCCSP)
- Community-Based Management of Acute Malnutrition (CMAM)
- Supplementary Feeding Program
- Micro-nutrient Supplementation
 - ✓ Vitamin A
 - ✓ Iron
 - ✓ Iodine
- Going forward, there is the need for the district to solicit for funding for the program. Ultimately, a strong integration with other routine programs that

have funding can stand the test of time. There is also the need to do on-the-job coaching of all staff involved in one way or the other in NMCCSP.

Table: Vulnerability (Nutritional) Issues Status of NMCCSP, 2013

Indicator	No.	%
Communities Targeted	76	
Communities Covered	35	46.0
Communities Reporting Regularly	21	60.0
Health workers trained	-	
Volunteers trained	18	
Partners trained	-	
District Implementation Committee	0	

Source: Annual Report Pusiga District Health Directorate

Table: Vulnerability (Nutritional) Issues NMCCSP Performance, 2013

INDICATOR	No.	%
U2yrs Registered up to date	1,281	
Attendance (GP sessions)	6,852	57.0
Absence from 2 GP sessions	3,609	30.0
Adequate growth	4,376	63.9
Inadequate growth for 1 month	1,262	18.4
Inadequate growth for 2 Continuous months	724	18.6
Immunization coverage (complete for age)	5,645	82.4
Exclusive Breastfeeding	634	41.9
Timely complementary Feeding	1,550	82.4
Vitamin A supplementation	2,556	46.9
Diarrhoea (last 1 month)	146	2.1
ORS	82	56.2

Source: Annual Report Pusiga District Health Directorate 2013

Antenatal Care Services

Antenatal Care (ANC) coverage in the district has seen a reduction over the past three years. The district has seen a rapid decline in 2013 with respect to both absolute figures and percentages, even though the target has far been exceeded.

Coverage for all sub-districts dipped. Among the sub-districts (Pusiga Central, Widana, and Kulungugu/Kultamise) with midwives and so are expected to provide ANC services, the best performing was Pusiga Central (202.0%) with the least being Kulungugu/Kultamise (99.6%). The high coverage in Pusiga Central is to be expected because of the existence of two facilities providing the services.

Nakom/Zuabuliga and Sarabogo sub-districts have only CHPS facilities without midwives during the major part of the year. However, outreach ANC services were sometimes carried out by midwives from Pusiga Health Centre in previous years.

Early (first trimester) ANC registration consistently improved between 2010 and 2012 but slightly dropped in 2013 to 40.4% from the 2012 value of 41.1%. On the other hand, 3rd trimester registration continues to drop from the 2010 value of 31.7% to a value of 21.8% in 2013. This is a healthy development and so everything possibly necessary should be done to sustain it – increase 1st trimester registration with an equal or more measure of reduction in 3rd trimester registration.

The reasons for the drop in ANC coverage and also late reporting during pregnancy include:

- No reagents/materials for routine investigations for pregnant women at Pusiga H/C during first half year
- HB machine at Pusiga H/C not calibrated during first half year
- ANC outreach no more carried out at Nakom/Zuabuliga during first half year
- Iron 3 was absent during the first half year
 - ✓ Women prefer to attend ANC in the private facilities and Bawku Presby hospital where they can get all the needed services
- Inadequate midwives
- Socio cultural factor preventing pregnant women from attending ANC especially in their first trimester
- Low health education on the importance of ANC

The plan therefore is to:

1. Carry out outreach ANC services in all CHPS zones
2. Place midwives in CHPS zones with facilities that can accommodate them and their services. In order of priority are Nakom CHPS, Sarabogo CHPS, Kultamise CHPS and clinic, Tindanatinga CHPS and then Zuabuliga CHPS.
 - To meet the demand for ANC services, the district will liaise with the DA to renovate, expand and provide electricity to these CHPS centres
3. Encourage and facilitate midwifery training for qualified staff

Figure 2: Average District ANC Registrants - Pusiga, 2010 - 2013

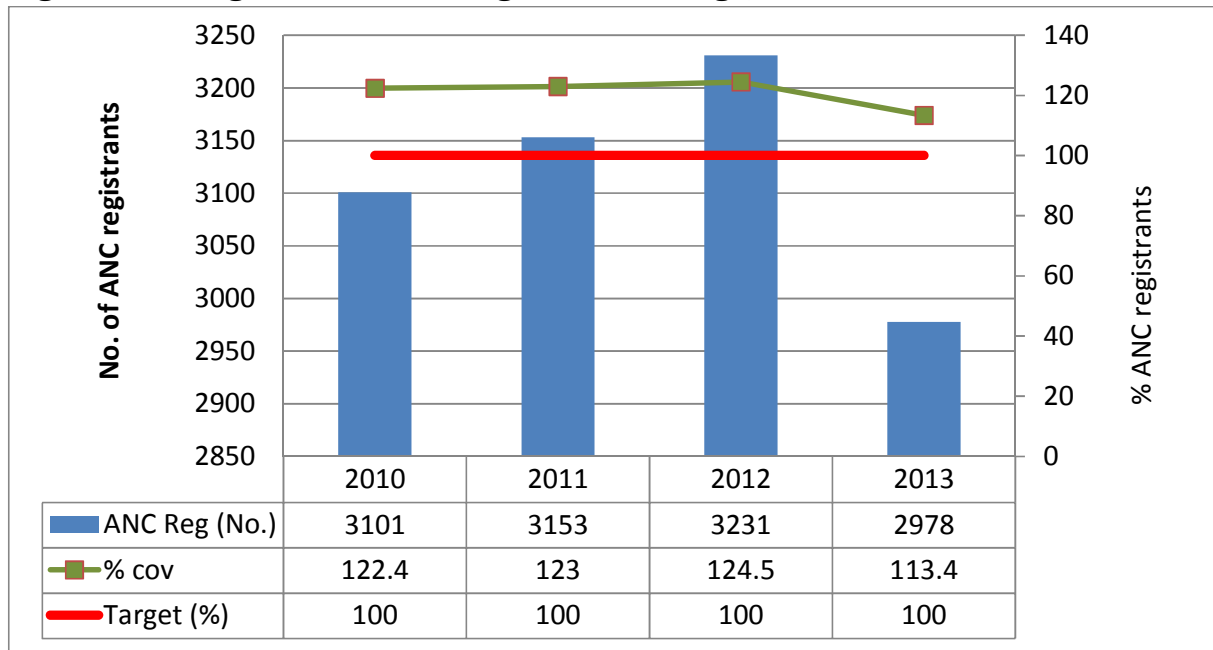
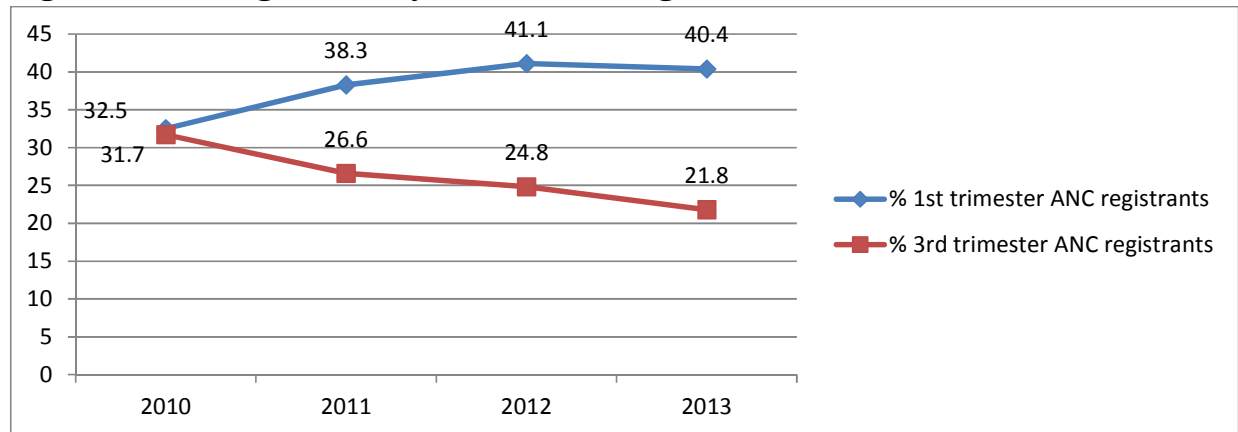


Table 5: ANC Registrants by sub-districts, 2010-2013

Sub-district	2010		2011		2012		2013	
	No.	%	No.	%	No.	%	No.	%
Kulungungu/Kultamise	618	129.2	550	113.6	541	110.4	494	99.6
Nakom/Zuabuliga	0	0	7	1.2	69	11.4	40	6.6
Pusiga Central	1435	261.7	1423	256.5	1301	231.7	1148	202
Sarabogo	0	0	0	0	0	0	0	0
Widana	1048	163.8	1173	181.1	1320	201.4	1296	195.4
TOTAL	3101	122.4	3153	123.0	3231	124.5	2978	113.4

Figure 3: ANC Registrants by Trimester, Pusiga: 2010 – 2013



As much as we want pregnant women to report early at antenatal, certain factors mitigate against this policy. Below are some of the factors:

- Inadequate midwives
- Socio cultural factors preventing pregnant women from attending ANC especially in their first trimester
- Low health education on the importance of ANC at the community level
- Poor volunteer and community support to health service delivery

Haemoglobin testing at registration and at 36 weeks gestation has not been encouraging. The proportion of pregnant women whose HB was checked at registration increased from 61.2% in 2010 to 91.1% in 2012 and dropped significantly to 66.8% in 2013. This was largely due to the shortage of HB test kits (microcuvets) and reagents and the inability of Nakom CHPS to carry out haemoglobin test for pregnant women. The microcuvets were not available in the RMS and could not also be gotten from the suppliers that were contacted upon acquiring a non-availability certificate from the RMS. The summary of reasons for the low HB checks using the Bottleneck Analysis (BNA) approach is as follows:

- **Commodities:** 80% (8/10) HF's ran out of HB test kits for more than 2 weeks in a month between Jan & Aug, 2013
 - Commodities not available at RMS
 - Acquired non-availability cert to buy from open market only in last quarter of 2013
 - Could not get microcuvets to procure for HB machine at Pusiga H/C
 - This could have been given to another facility (Nakom CHPS) for use since the H/C has another HB machine

Moving forward, the District will continue to make enquiries from the RMS and the open market for microcuvets and HB machines for Nakom and Sarabogo CHPS. Below is a graph of HB checked at registration from 2010 - 2013.

Figure 4: HB checked at registration as a percentage of ANC registrants, 2010-2013

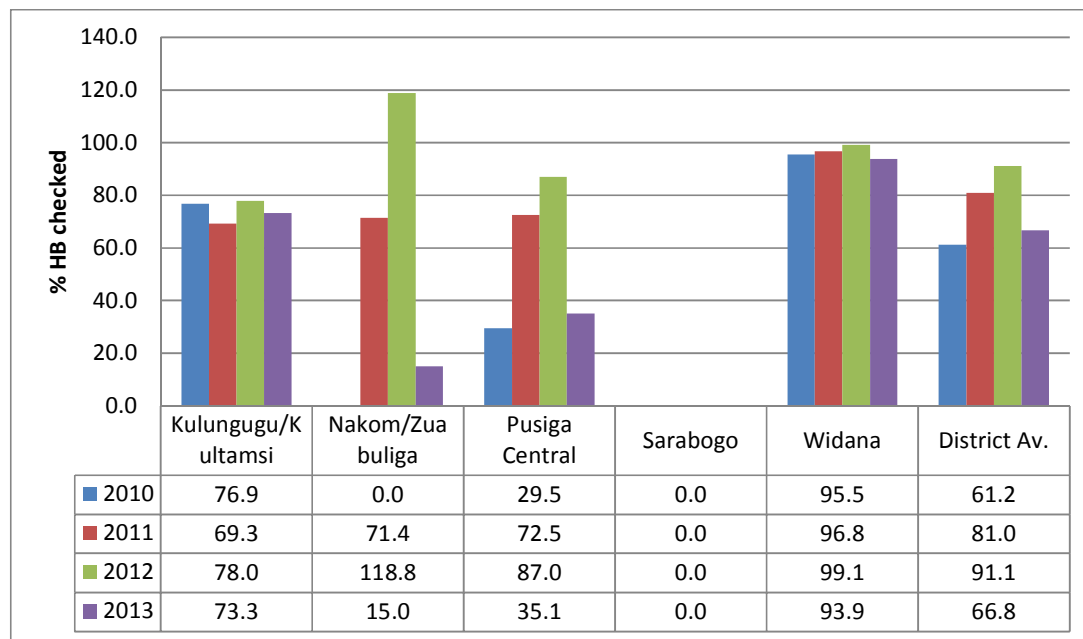


Table 6: Summary of HB results of ANC clients, 2010 - 2013

INDICATOR	2010		2011		2012		2013	
	No.	%	No.	%	No.	%	No.	%
HB checked at ANC reg.	1899	61.2	2553	81.0	2944	91.1	1988	66.8
HB <11gm/dl at reg	147	7.7	496	19.4	733	24.9	704	35.4
HB <7gm/dl at reg	0	0.0	12	0.5	45	1.5	30	1.5
HB checked at 36wks	679		890		863		4226	
HB <11gm/dl at 36wks	26	3.8	62	7.0	184	21.3	223	5.3
HB <7gm/dl at 36wks	2	0.3	5	0.6	8	0.9	7	0.2

Another ANC quality indicator is ensuring that clients make at least 4 ANC visits. This is to ensure that the skilled service provider have more contacts with the pregnant thereby ensuring that if there are risk associated with the pregnancy they are detected and addressed before term. It is also to ensure that the necessary preventive treatments and routine medications are given.

Figure 5: Fourth ANC Visits, 2010 - 2013

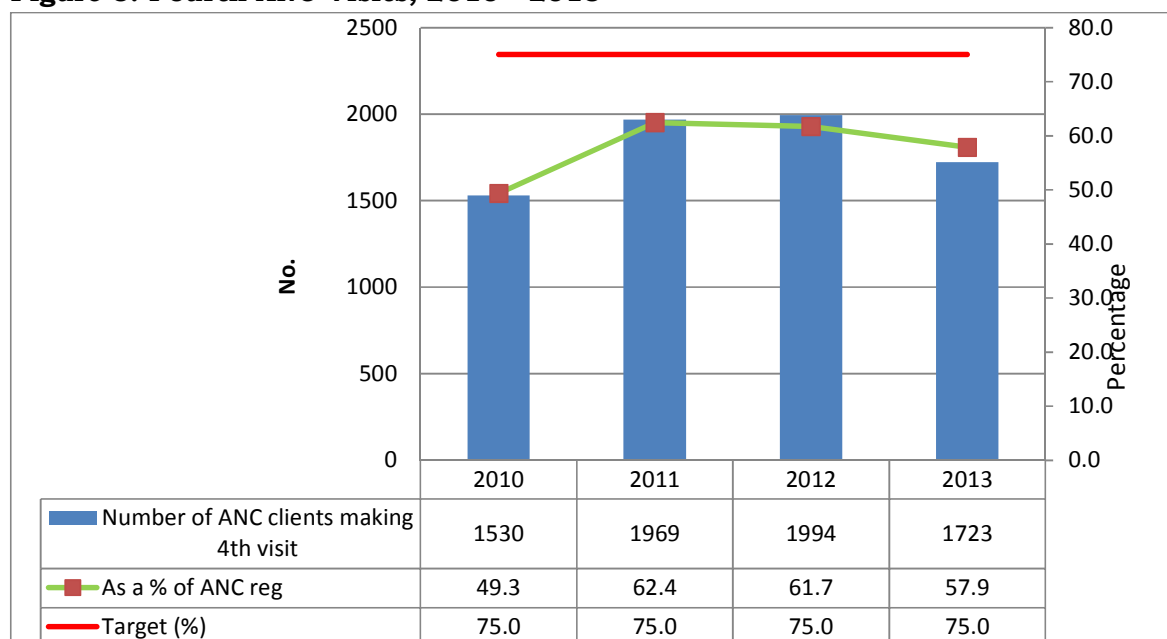


Table 7: Performance on ANC Clients Making 4th Visits, 2010 - 2013

Sub-district	2010		2011		2012		2013		Target (%)
	No.	%	No.	%	No.	%	No.	%	
Kulungungu/Kultamise	618	36.4	550	44.2	541	44.9	494	39.3	75.0
Nakom/Zuabuliga	0	0.0	7	0.0	69	91.3	40	25.0	75.0
Pusiga Central	1,435	41.7	1,423	50.8	1,301	45.7	1,148	40.0	75.0
Sarabogo	0	0.0	0	0.0	0	0.0	0	0.0	75.0
Widana	1,048	67.4	1,173	85.5	1,320	82.9	1,296	81.8	75.0
Total	3,101	49.3	3,153	62.4	3,231	61.7	2,978	57.9	75.0

Annual Report Pusiga District Health Directorate

Skilled Deliveries

Skilled (supervised) deliveries is ranked among the best five performance indicator areas in the district for the period reviewed. It has experienced an increase within the past three years, with a dramatic increase between 2012 (106.0%) and 2013 (121.7%). There were sub-district variations even among sub districts with midwives throughout the year. Of the 3 sub-districts with midwives throughout the year (Pusiga Health Centre, Kulungungu/Kultamise and Widana), the best performing sub-district was Pusiga Central, the performance of which was greatly influenced by the impressive performance of the private facility (Akunye Memorial Hospital).

The following factors could be attributed to the improved skilled deliveries:

Commodities Availability:

- Four-fifth of the few facilities (5/10) HF's providing delivery services had at least one(1) delivery kit throughout the period under review
- Akunye hospital now has an ultrasound scanning machine

Human Resource:

- Midwives of the few health facilities (50%, 5/10) having at least one(1) midwife are committing all their efforts into providing skilled deliveries
- Followed up on near-term pregnant women to deliver at the facilities
- Facilitated pregnant women to register with NHIS
- Akunye hospital now has 2 medical doctor

Skilled deliveries as a percentage of expected deliveries, 2010-2013

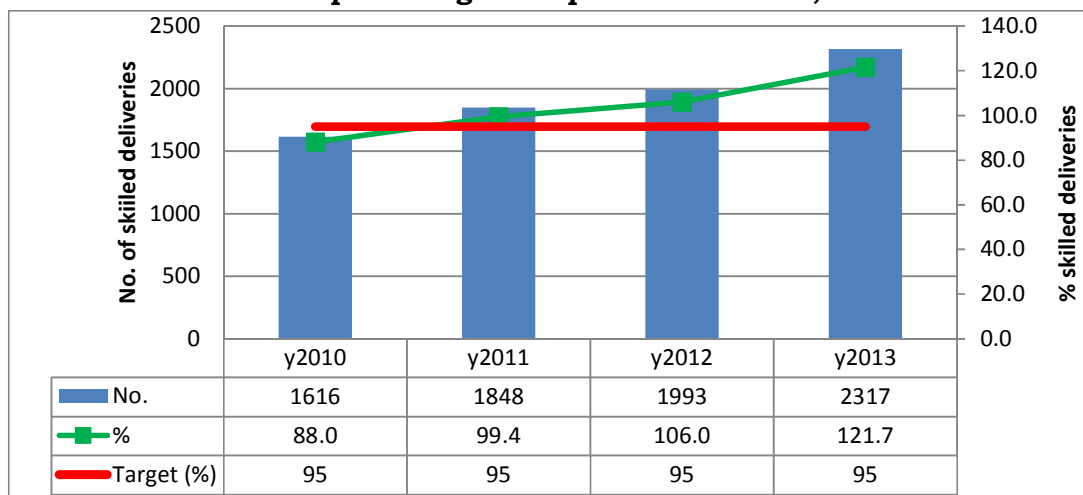
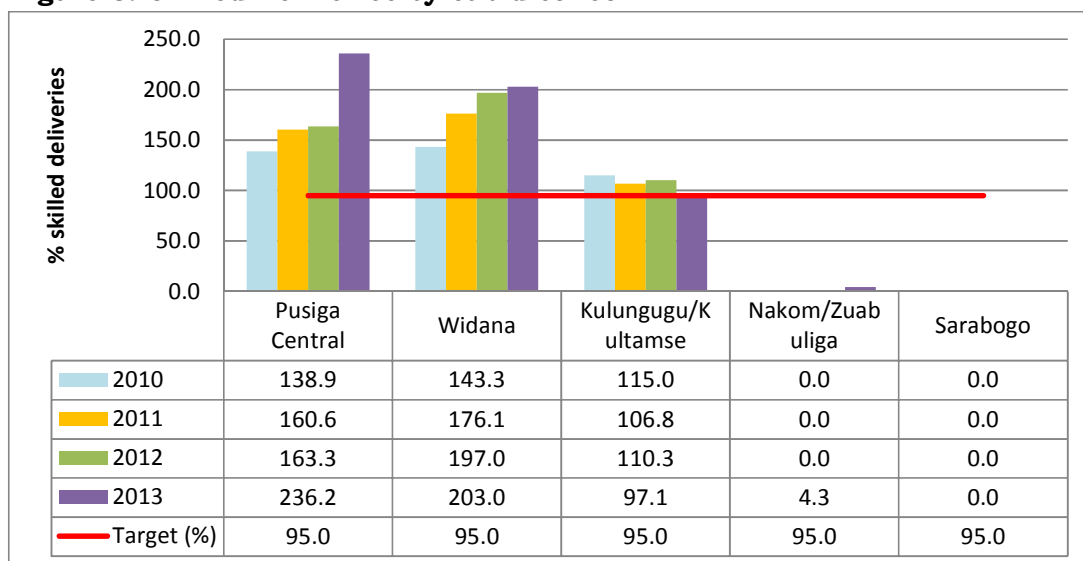


Figure 6: Skilled Deliveries by sub-district



Still Births and Maternal Deaths

Still births have not reduced. The district recorded seventeen (17) cases in 2010, twenty (20) cases in 2011, twenty three (23) cases in 2012 and twenty two (22) cases in 2013. This issue is very worrying; some of the pregnant women use **cytotec** with the aim of hastening delivering. Herbal preparations are also reported to be used by expectant mothers to relieve labour pains. These practices are dominant in Widana sub-district. The district has planned to reduce this menace by

1. Engaging community partnership and
2. Carry out extensive health education.

The District recorded one (1) maternal death during the year under review. However, the case was reported at Bawku Presbyterian hospital in January. This gives a district MMR of 43.57/100,000LBs, below the national target of less than 100/100,000LBs.

Table 8: Some EOC Indicators, 2010 - 2013

Indicator	2010	2011	2012	2013
Deliveries (mothers)	1583	1808	1838	2169
C/S	0	11	5	19
C/S rate (%)	0.0	0.6	0.3	0.9
Live births (babies)	1599	1828	1970	2295
No. of maternal deaths	0	0	0	1
No. of maternal deaths audited	0	0	0	1
MMR/100,000 LB	0	0	0	43.57
Still births	17	20	23	22
% still births	1.1	1.1	1.2	0.9

There are couples of factors militating against efforts of achieving zero maternal and child mortality. Some of them include:

- Late care seeking by clients
- low interest in antenatal service by community members
- Some of the still births can be attributed to the fact that some women are using cytotec to enable them deliver early
- Low male involvement in antennal services

Post-Natal Care Services

Post Natal services remained stagnant at between 118.5% in 2011 being the lowest and 124.9% in 2010 being the highest. Generally, the good performance in the PNC was partly due to the following factors:

- No shortage of PNC commodities during the period under review
- CHNs/Midwives in all facilities do conduct PNC services
- New Born Care (NBC) activities are carried out by CHOs/CHNs through home visits/outreaches

Four-year trend of PNC service (registrants) coverage, 2011-2013

	2010	2011	2012	2013	Target
No.	2295	2202	2290	2317	952
%	124.9	118.5	121.7	121.7	100.0

PNC by sub-districts

Sub-district	2010		2011		2012		2013	
	No.	%	No.	%	No.	%	No.	%
Kulungungu/Kultamise	458	132.0	378	107.7	381	107.3	338	94.0
Zuabuliga/Nakom	189	44.3	91	21.1	155	35.5	102	23.1
Pusiga Central	716	180.1	708	176.0	686	168.5	745	180.8
Sarabogo	100	49.5	77	37.7	97	46.9	95	45.4
Widana	832	179.3	948	201.9	971	204.4	1037	215.7
Total	2295	124.9	2202	118.5	2290	121.7	2317	121.7

Annual Report Pusiga District Health Directorate

Sub-district level PNC coverage varied with Widana Sub-district recording the highest with 215.7% in 2013 and Nakom/Zuabuliga registering the lowest coverage with 23.1% in 2013.

Similar to the trend of deliveries at Kulungugu/Kultamise sub-district, there was a drop in PNC coverage (registrants) in that sub-district. The opening of new clinics across the border partly accounts for this drop.

Even though the staffing (CHOs/CHNs) in Nakom/Zuabuliga sub-district improved this year compared to the previous year, their PNC services dropped significantly from 35.5 % in 2012 to 23.1% in 2013. This is a worrying situation that needs immediate attention. CHOs /CHNs have been assigned to electoral areas to ensure that, they meet set targets with the hope that this would possibly address the problem of low PNC coverage in this sub-district and improve on that of other sub-districts.

Post-Partum Vitamin A

Vitamin A capsules are given to mothers immediately after delivery to prevent vitamin A deficiencies in lactating mothers. Post-partum vitamin A coverage decreased in 2012 but dramatically increased from 54.6% in 2012 to 88.6% in 2013. The district did not however achieve its target of 90%.

This reduction is due to the fact that vitamin A supply to the district was erratic during the year under review.

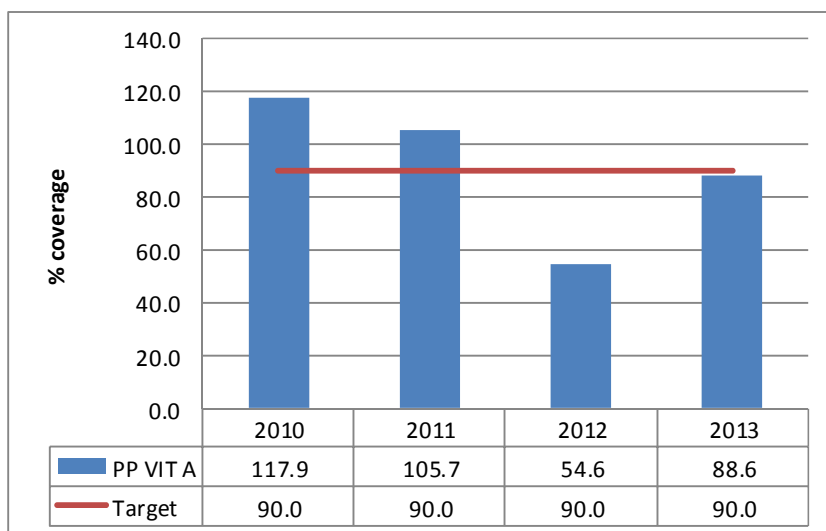
* Commodities:

- Stock outs in facilities avoided/minimized by
 - ✓ Improved supply of Vitamin A from the Region and National
 - ✓ Redistributing Vitamin A after mass campaigns for routine activities done

To further improve post-partum vitamin A Coverage

1. District will continue to mobilize and redistribute Vitamin A after mass campaigns
2. National should supply Vitamin A for routine supplementation

Figure 19: Post-partum vitamin A, 2010-2013



Post-partum Vitamin A Coverage by Sub-district, 2010 - 2013

Sub-district	2010		2011		2012		2013	
	No.	%	No.	%	No.	%	No.	%
Kulungungu/Kultam ise	762	159.3	410	84.7	156	31.8	211	42.6
Zuabuliga/Nakom	188	31.9	64	10.7	143	23.7	220	36.1

Pusiga Central	754	137.5	629	113.4	282	50.2	391	68.8
Sarabogo	63	22.6	61	21.6	19	6.7	25	8.7
Widana	399	62.4	801	123.7	427	65.2	840	126.7
TOTAL	2166	85.5	1965	76.6	1027	39.6	1687	64.2

Annual Report Pusiga District Health Directorate

Challenges

- No DHMT permanent office
- Low technical knowledge in ICT of most staff in the district
- Lack of funds to roll out DHIMS II to all sub-districts
- Inadequate numbers of computers in the district
- Poor internet connectivity in some parts of the district
- No District Government Hospital
- Inadequate health staff
- High number of untrained staff on PMTCT due to inadequate funding
- Frequent breakdown of Nanfang motorbikes due to bad roads
- No vaccine fridges (especially solar fridges) as most facilities not connected to National GRID
- No structures for some CHPS centres
- Delay in carting food from World Food Programme warehouse at Tamale
- Some CHOs do not stay at the compound but rather commute daily from township because they have no staff accommodation at the facility
- Dilapidated CHPS compounds
- Inadequate equipment for effective service delivery
- Inadequate motorbikes to effectively implement the operation of CHOs/CHNs by Electoral Areas
- Inadequate fuel supply
- Lack of community support
- Insecurity at the compounds as community members prefer to be paid to provide security.
- However, there is a freeze on the engagement of security/watchmen and the facilities do not also generate much revenue to engage casuals.

National Health Insurance Scheme (NHIS)

The District has no health insurance scheme office the people still register under Bawku Municipal Health Insurance Scheme (NHI). Adequate data on registered clients is not available.

Water and Environmental Sanitation

Water

Pusiga District is served with relatively good source of water supply. The population of the Pusiga Township is served largely from two (2) mechanized boreholes which is inadequate for the population in the Pusiga township. There is intermittent supply of water especially in the high density areas and even not all parts of the town are covered. As a result of this, the Assembly is sourcing funds to expand the Pusiga Town Water System.

There are a total of 108 point sources boreholes, no hand-dug wells fitted with pumps and 18 hand-dug wells without pumps.

The current coverage of water in the District is 55.2% whilst the rest of the 40.8% depends on unsafe sources of water which is below the target for the Millennium Development Goal Target of 76%. This coverage was calculated taking into consideration the distance, quality, all year round potable water facilities, spatial distribution, and population factors. Widana Small Town Water System is currently under construction to be completed within two years. It is the intention of the District Assembly to provide similar Small town water and sanitation systems to Kulungungu, Dabia, Mandago, Sugudi, Zuabuliga and Sarabogo. However there are some factors that also militate against the potable water supply these include intermittent supply as well as long distance covered by many people in the rural areas to have access to boreholes as a result of the dispersed pattern of settlements.

Environmental Sanitation

The District is severed with relatively different types of sanitation facilities (toilets). The population of Pusiga Township is severed with four (4) KVIPs, and fifty (50) households VIPs. Furthermore the whole District is severed with ten (10) public KVIPs in disperse and fifty (55) household VIPs as well as eight (8) WCs. Therefore 12.9% of the populations have access to sanitation facilities (Toilets) in the district.

Waste Management

With refuse disposal, by standard, 0.45kg of refuse is generated by an individual per day (community water and sanitation operation manual April 2009) therefore with the population of sixty- six thousand four hundred and thirty seven (66,437), the amount of refuse generated per year stands as 10,942,173.9 tons of refuse in which none is sanitarly collected and disposed off. The commonest disposal methods practices in the District are crude dumping and control tipping.

Challenges

- ❖ Inadequate portable water supply
- ❖ Inadequate household latrines
- ❖ Inadequate waste management equipment

- ❖ No final disposal site
- ❖ No designated public cemetery
- ❖ No slaughter house/slabs
- ❖ Inadequate meat shops
- ❖ Inadequate laborers
- ❖ Inadequate means of transport

Vulnerability And Exclusion

There are a number of vulnerable and excluded in the District.

These include:

- ❖ The aged
- ❖ The youth
- ❖ Single mothers
- ❖ Widows
- ❖ Mentally ill people
- ❖ Mentally retarded people
- ❖ Children
- ❖ People living with HIV/AIDS
- ❖ Physically challenged – blind, cripple, dumb, death patients among others.

These vulnerable and the excluded suffer from discrimination in various forms:

- ❖ Exclusion from social services accessibility
- ❖ Inadequate access to facilities
- ❖ Inadequate social or economic support
- ❖ Inadequate skills,
- ❖ Inadequate funding.

The District Assembly used the People with Disabilities Accounts Funds to finance programmes geared towards improving the living conditions of these people.

Women

More than 50% of the District populations are women, but women participation in decision-making was very insignificant in the past. They were among the most vulnerable and lacked skills that could empower them economically. Girl-child education was almost considered a waste of resources.

This wrong perception about women has taken a new dimension with pragmatic policies put in place to integrate them into the mainstream of society. The Ministry of Gender, Children and Social Protection is doing everything possible to promote the interest of the vulnerable in society particularly women and children.

In the Pursuant of this objective the District Assembly in collaboration with relevant stakeholders including Action Aid, BEWDA and other NGOs have supported and built the capacity of women socially economically and politically in the District.

People With Disabilities (PWDS)

The 2010 Population and Housing Census (PHC) shows that out of the total population (57,677), 2.0 percent have various forms of disability related to sight, hearing, speech, physical, intellectual, emotional and others while 98.0 percent do not have any form of disability. Attempts by the District to support the vulnerable in society have not neglected the physically challenged. A total of Two Hundred and Thirty-Two (232) People With Disabilities (PWDs) have been registered by the Assembly and some of them benefited from disability fund for 2012/2013 out of which forty -five (45) have visually impaired sixty nine (69) have hearing impaired, one hundred and thirteen (113) are physically challenged and four (4) are mentally challenged.

METHODOLOGY FOR THE DEVELOPMENT OF THE MEDIUM TERM DEVELOPMENT PLAN

After Developing the Medium Term Development Plan a National exercise was conducted by National Development Planning Commission (NDPC) and Regional Planning Coordinating Unit (RPCU) for all Metropolitans/Municipals/ Districts to prepare comprehensive Participatory Monitoring and Evaluation Plans of their Metropolitan's/Municipal's/District's Medium Term Development Plans based on a given Core Indicators to which Districts could add their own Specific Indicators if they found it necessary.

This exercise is to report on the performance of these indicators (Core and District specific) for the year 2013. To do this successfully;

Data was collected from the District's Sector Departments, Ministries and Agencies. This data was analyzed at the District Level using excel and other data analysis tools. This analysis includes reasons for the positive and negative performance of these indicators.

The major challenges encountered were:

Difficulty in getting some data.

Also people were busy on their other works. It was normally therefore difficult to get them to respond to requests to submit data on time.

Inability to obtain some data: The District does not have a full complement of the decentralized departments' agencies such as Town and Country Planning, National Health Insurance Scheme among others.

CHAPTER TWO

ENSURING AND SUSTAINING MACROECONOMIC STABILITY

Ensuring and sustaining Macro Economic Stability is a prerequisite for development of a nation. In this Chapter, we shall be looking at the Micro economic indicators and revenue performance in the District that would have impact on the Macro Economic indicators. The District Revenue and expenditure pattern for 2012 and 2013 would be compared and variations would be analyzed.

FINANCIAL PERFORMANCE

ITEM	2012			2013		
	REVENUE GH¢	EXPENDITURE GH¢	SURPLUS/ DEFICT GH¢	REVENUE GH¢	EXPENDITURE GH¢	SURPLUS / DEFICT GH¢
IGF	35,018.70	24,746.63	10,272.07	119,246.40	123,284.35	6,234.12
DACF	695,939.73	464,776.51	231,163.22	616,582.98	558,974.80	288,771.40
DDF				312,518.00	232,379.81	80,138.19
MP's CF	-			84,431.06	-	84,431.06
PWD	-			43,489.56	-	43,489.56
GSFP	-			800,394.67	773,388.20	25,156.47
GOG DEPTS	-			24,466.24	24,466.24	-
TOTAL	695,939.73	489,523.14	241,435.29	2,001,128.91	1,712,493.40	528,220.80

Source of District Assembly's Funds

Comments:

- ✓ The Assembly is putting in pragmatic measures in place to close revenue loop holes and to broadening the tax base in order to increase local revenue for development.
- ✓ The Assembly was operating on only DACF, DDF and GOG as at 2013.
- ✓ Irregular deductions and delay in releases of DACF.
- ✓ Some of the releases would be extended into 2014.

CHAPTER THREE

Accelerated Agricultural Modernization and Sustainable Natural Resource Management

INTRODUCTION

The focus of this Chapter is to reveal the performance of the District with regard to accelerated agriculture.

The total area of Pusiga District is 364.6 square kilometers and the total cultivable land area is 20767.96 HA.

Pusiga District has an agro based economy with over 60% of the population engaged in agriculture most of whom are peasant farmers. The District has large agricultural households and with an average of six people per households and average land holding of between 1.0 and 3.0 ha. The District is basically dependent on rain fed agriculture with some farmers engaged in dry season farming.

CROP PRODUCTION AND SUPPLY

The crops mostly cultivated by farmers in the district includes: Maize, Millet, Sorghum, Rice, Cowpea, Soybean, Groundnut, and Sweet Potatoes. Vegetables such as Onion, Tomatoes, Green pepper, Okro, Cabbage, Garden eggs and leafy vegetables are also cultivated in both the rainy and dry season.

Land preparation is mostly done by bullocks and hoe with few farmers using tractors to plough their lands.

Methods of Land Acquisition for farming

Land tenure system

Source	%
Communal Ownership (freehold)	99
Lease Hold	1
Total	100

Source: MOFA Field Survey: 2013

Rainfall and its Effect on Agriculture

The rainfall distribution for the cropping season of the year 2013 was generally normal with a total rainfall of 920.9mm and 43 rainy days. Rainfall was evenly distributed with mixed weather pattern for the period. However there was a short dry spell in the month of June and July which had no any significant effect on farming activities in the district.

Table1: Climatic data of the period

Data	1st Quarter		2nd Quarter		3rd Quarter		4th Quarter		Total	
	2012	2013	2012	2013	2012	2013	2012	2013	Annual - 2012	Annual - 2013
Rainfall (mm)	48.0	0	408	325	690	527.9	120	68	1266.0	920.9
No rain days	1.0	0	16	13	32	26	7	4	56.0	43.0
Rainfall Distribution	Normal	Normal	Normal	Normal	Normal	Normal	Normal	Normal		
Dominant weather pattern compared to normal year	Mixed	Mixed	Mixed	Mixed	Mixed	Mixed	Mixed	Mixed		

Source: DADU**General crop performance 2013**

Generally production of food crops within the year was good with the total district production being able to cater for the estimated district consumption with surplus for future use. The domestic production, consumption and deficit or surplus is a good indicator of food security of the district. Records show that the district has been food secured in all the major food staples with the exception of groundnut which had no any significant effect on the food security situation of the district.

Situational report on General crop performance 2013

CROP	TOTAL CROPPED AREA (HA)	ESTIMATED YIELD (Mt/Ha) total		PERFORMANCE
Maize	4,495	4.3	19328.5	Good
Rice	2,062.43	0.95	195.93	Average
Millet	3,844	1.7	6534.8	Good
Sorghum	2,746.6	2.0	5493.2	Good
Soya	2,488.68	1.1	2737.54	Average
Groundnut	1,900.3	1.2	2280.36	Average
Cowpea	323.95	1.3	421.135	Average
Total	17,860.96		36,991.465	Good

Storage Facilities

Type of Facility	%
Cribs/barns and sheds	5
Burying (underground pits)	0
Store room- traditional silos	20
Kitchen	5
Improved silos, jute sacks	70

Irrigation and Water Management

Dams: There are few dams and dugouts in the District. Some of them are Zuabuliga Dam, Nakom Dam, Zong-Natinga Dam, Widana Dam and Sarabogo Dam.

Increasing the land area under irrigated agriculture as well as improving the productivity of farmlands through increased cropping intensities/land intensification ratios and crop diversification, will significantly boost food production and also contribute in ensuring food security. To achieve this objective the department of agriculture is helping farmers around the Volta River and other dam site and dugouts located around the district to engage in to dry season farming

Crops cultivated under irrigation for the 2012/2013 dry season includes tomatoes, onion, pepper, Okro and cabbage with a total of 71.21 (Ha) land area under cultivation.

Four water user groups were identified using the Volta River with their farms located at the river banks.

Almost all the irrigable lands were cropped about thrice before the end of the year, thus resulted in the land intensification ratio of 1:01. See table below

District Irrigated Crops

1st Quarter - 2014						
	Area under cultivation (ha)	Harvested area per crop cycle (ha)			Land intensification ratio on irrigated cropped area	Production (MT)
		1st crop	2nd crop	3rd crop		
Vegetables						
Tomato	13.09	7.1	4.5	1.49	1.00	793.855
Pepper	8.68	4.3	2.2	2.18	1.00	160.686
Onion/Shallot	20.48	10.38	6.6	12.5	1.44	1122.2433
Garden Eggs	0	0	0	0	#DIV/0!	0

Cabbage	6.33	2.22	2.7	1.4	1.00	123.234
Green/French Beans	0	0	0	0	#DIV/0!	0
Okro	1.3	0.24	0.16	0.9	1.00	64.438
Water melon	0	0	0	0	0.00	0
Subtotal	49.88	24.24	16.16	18.47	1.18	2264.4563
Cereals						
Rice					#DIV/0!	
Maize						
Others						
Subtotal						
TOTAL	49.88	24.24		18.47	0.86	2,264

Source: DADU / RADU, IWMI, GIDA, projects

FBO Development Annual 2013

There are only twenty (20) existing and functional groups involved in crop production and processing in the district. Eleven (11) new groups were formed in the year 2013 with nine already existing and functional under Bawku municipal in the year 2012.

Only females were found to be engaged in processing of various crops with no FBOs engaged in animal production and marketing. New FBOs will be formed in 2014 to support the efforts of the already existing ones especially in animal production and marketing of various commodities.

The existing groups were help in strengthening their activities all year round to enable them improve their services for their own benefit and to improve agriculture performance in the district.

Group Formation

Type of Group	Existing groups (D)			New groups (E)			Total group	Total Male Membership	Total Female Membership	Ratio of Male / Female members**	Functional groups (F)		
	N o.	Membe rship		N o.	Members hip						N o.	Membe rship	
		M	F		M	F						M	F
Annual - 2012													
Crop Production	7	12	30	-	-	-	7	125	30	4.17	-	-	-

Animal Production		-	-	-	-	-	0	0	0	#DIV/0!	-	-	-
Processing	2	0	40	-	-	-	2	0	40	0.00	-	-	-
Marketing	-	-	-	-	-	-	0	0	0	#DIV/0!	-	-	-
District Total	9	125	70	0	0	0	9	125	70	2	0	0	0
Annual - 2013													
Crop Production	7	125	30	6	7	7	13	132	37	3.57	13	13	37
Animal Production	-	-	-	-	-	-	0	0	0	#DIV/0!	-	-	-
Processing	2	0	40	5	1	65	7	1	105	0.01	7	1	105
Marketing	-	-	-	-	-	-	0	0	0	#DIV/0!	-	-	-
District Total	9	125	70	11	8	72	20	133	142	1	20	133	142

Source: DADU, RADU, AESD, MOFA

(1): Total group is the sum of existing groups (existing before the considered year) and new groups created during the considered year

**** The ratio is calculated as male/female. So a ratio of 5 means there were five males for every female.**

Distribution of Farmer Based Organizations Accessing Services

Distribution of Farmer Based Organizations Accessing Services

	Number of formed FBOs	Number of functioning FBOs	Number of functioning FBOs accessing financial services	Number of functioning FBOs accessing marketing information	Number of water user associations
Annual - 2012	9	9	2	0	3
Annual -	20	20	4	0	3

2013					
% Change Q/Q	1.22	1.22	1.00	#DIV/0!	0.00

**Source DADU/MOFA
Youth in Agriculture**

Some youth within the district benefited from the block farm programme for the years which help them to engage themselves in agriculture activities for the season. A total of one hundred and four (104) youth benefited from the programme with 14% being female beneficiaries. This initiative was taken to encourage the youths to involve themselves in agriculture in order to improve their Incomes for a better livelihood and to boost agriculture productivity in the district.

Table14 : Youth in Agriculture

District	Youth involved in farm activities with MOFA special initiative for youth			
	Male	Female	TOTAL	% Female
Pusiga	89	15	104	14%

Inputs Received for 2013 Block Farm

TYPE OF INPUTS	NUMBER OF BAGS	NUMBER OF BAGS DISTRIBUTED	PREVALENT RATE	
			MAIZE	RICE
NPK	200	200	200	-
UREA	200	200	100	100
S/A	-	-	-	-
TOTAL	400	400	300	100

Source: District Agricultural Development Unit Pusiga 2013

Fertilizer Subsidy PROGRAMME 2013

The District was given a quota of about 12,500

Pass Book have been supplied to farmers to purchase fertilizer in the District.

Updates of Fertilizer Received
Table Update of Fertilizer Received

UPDATE OF FERTILIZER RECEIVED									
COMPA NY	NPK			S/A			UREA		
	Dist Quot a	Quanti ty Receiv ed	Balan ce	Dist Quo ta	Quanti ty Receiv ed	Balan ce	Dist Quo ta	Quanti ty Receiv ed	Balan ce
YARA	6,500	3,795	2,705	1,500	805	695	1000	0	0
GOLDE N STOCK	2,000	1,513	487	1,500	0	0	1000	0	0
ZINKO M	4000	3,400	600	1,000	500	500	500	128	372
TOTAL	12,500	8,708	3,693	4,000	1,305	1,195	2,500	128	372

Market Prices

Average Whole Sale food Price of Major Commodities

The average prices of most food crops all year round were high. This increase in prices of most food commodities could be attributed to the increase in prices of farming inputs, increase in demand of some food products due to festivities and the increase in transportation cost due to bad road networks linking farming communities to market and high fuel prices. However prices of some food products like Maize, Millet and sorghum were stable towards the end of the year due to high yields and production of those commodities during the cropping season.

COMMODITY	Average Price (Nominal GHc)		
	Annual - 2012	Annual - 2013	Percentage Difference
Maize (100 kg)	65	60	
Local Rice (100 kg)	150	170	
Millet (93 kg)	75	85	
Sorghum (109 kg)	60	80	
Cowpea (109 kg)	180	190	
Groundnut (82 kg)	225	225	
Yam (250 kg)	0	0	
Cocoyam (91 kg)	0	0	
Cassava (91 kg)	0	0	
Plantain (9-11 kg)	0	0	
Tomatoes (52 kg)	0	0	

Smoked Herrings (100 singles)	0	0	
--------------------------------------	---	---	--

Table 6: Average Wholesale Food Price of Major Commodities

Source: DADU/ RADU/SRID/MOFA

LIVESTOCK AND POULTRY PRODUCTION

Livestock and poultry are generally reared in the district for both economic and for social status. All farmers in the district are engaged in the rearing of at least one type of livestock and poultry which are normally left on free range. The Intensive system of rearing is practice on a very small scale.

Livestock is known to contribute significantly to house hold food security and income in the district. Due to the effective veterinary extension work carried out over the year, there has been an increase in livestock and poultry production in the district. The table below is the livestock census for the period 2010- 2013.

Livestock Census Figures 2010 - 2013

YEAR	LIVESTOCK				
	CATTLE	SHEEP	GOAT	PIGS	POULTRY
2011	16,713	43,212	44,860	1,801	6,234,237
2012	17,548	45,872	46,203	1,941	6,477,449
2013	11,25	46,666	51,044	1,986	6,874,772
TOTAL	35,386	135,750	142,107	5,728	19,586,458

Source: District Agricultural Development Unit, Pusiga 2013

Major Pests and Diseases and their Prevalent Rates

DISEASE/PEST TYPE	Prevalent Rate		
	2011	2012	2013
YEAR			
New Castle	Annually	Annually	Annually
Anthrax	Every two years	-	Every two years
Peste De Petits Ruminant (PPR)	Annually	Annually	Annually
Foot And Mouth	Annually	Annually	Annually
Bulb Rot (Onion)	Erratic		
Onion Purple Blotch Disease	Erratic		
Army worm	Every three years		

Source: District Agricultural Development Unit Pusiga 2013

FISHERIES

The district has few water bodies especially the White Volta where fish hunting is carried out. Women mostly do fish processing and marketing.

MOFA Staffing Strength

The department is under staffed with only eleven (11) administrative and field staff with no any supporting staff. The table below shows the category and number of staff currently at post in the department.

CATEGORY OF STAFF	NUMBER PRESENT
Professional	3
Sub- Professional	1
Technical	7
SUPPORTING STAFF:	0
TOTAL	11
DIVISION	NUMBER AT POST
Extension (AEAs)	4
Crops	1
Veterinary	3
PPMED	1
PPRS	2
Finance	0

Source MOFA Pusiga, 2013

Agriculture Extension Capacity

The current fall in agricultural productivity by almost all the priority crops may be as a result of the present AEA farmer ratio of 1:30000 in the district. There is therefore the need to recruit more AEAs to augment the current staff strength and hence improve the current ratio. This will improve technology transfers and productivity in the district.

Agriculture Extension Capacity

Annual 2013

Human Resource	Total District	Pusiga Central Zone	Kulungugu Zone	Widana Zone
Number of AEAs required	24	8	8	8

per zone				
Number of AEs at Post	6	2	2	2
% of AEs at post to required	25.0%	25.0%	25.0%	25.0%
Number of female AEs	1	0	1	0
% of female AEs	16.7%	0	50.0%	0
Ratio of farm house hold per AEs at post	1: 30000	1:10000	1:10000	1:10000

Source: Pusiga DADU

Challenges of the Sector

- ❖ Lack of office and residential accommodation
- ❖ Lack of transport for MOFA Directorate
- ❖ Fragmented Land.
- ❖ High cost of monitoring and supervision.
- ❖ Low AEA: Farmer Ratio.
- ❖ Poor records keeping by farmers
- ❖ No means of transport for extension and other field workers
- ❖ Inadequate staff (especially AEs)
- ❖ Insufficient and irregular release of funds to run the office and undertake field activities
- ❖ High cost of farm inputs
- ❖ Use of local and low yielding varieties by farmers
- ❖ High post-harvest losses
- ❖ Lack of modern Storage facilities
- ❖ Short and Erratic rainfall pattern
- ❖ Inadequate feed and water for animals during long dry season
- ❖ Prevalence of pest and disease of both crops and livestock
- ❖ No improved housing and inadequacy of improved breeding stock of livestock
- ❖ Unfavorable market conditions
- ❖ Underdeveloped access roads to food producing areas.
- ❖ Fertilizer smuggling

RECOMMENDATION/ROAD MAPS

- ❖ Provision of office and residential accommodation for MOFA
- ❖ Provision of transport such as vehicles and motor cycles
- ❖ Sensitizing farmers on MOFA programmes
- ❖ Provision of credit to farmers on time
- ❖ Provide credit to more enterprising farmers

- ❖ Form viable FBOs
- ❖ Improve market access
- ❖ Enhance collaboration with DA and other partners
- ❖ Sensitizing Chiefs and land owners to make land accessible to women for farming.
- ❖ Regular security along unapproved routes to neighboring countries thus Togo and Burkina Faso up Security

FEEDER ROADS

Proportion /Length of roads maintained/rehabilitated

There has been an improvement in the lengths of feeder roads maintained/rehabilitated in the District due to the fact that the Assembly procured her own Grader and using it to open up roads in all the electoral areas and grade existing roads. Total Engineered roads in 2012 stood at 40 km and increased to 85 in 2013. District is likely to meet the target of rehabilitating 150 km roads by 2014.

ENERGY

% change in number of households with access to electricity

The percentage coverage of household who have access to electricity in the District for 2012, is 15 %, and the same 15 % in 2013. The District is likely to achieve 30% increase in house hold connection by the end of 2014.

YEAR	2012	2013	2014 Target
Households with electricity and percentage increase	15%	15%	30%

There is a commitment to provide electricity supply to the communities. This is due to Self Help Electrification Programme (SHEP) embarked upon by communities and supported by the District Assembly and the Central Government. The Assembly has committed part of DDF funds and procured 200 low tension poles to connect 25 communities in the District. The target of 30% is more likely to be achieved because of the Government Rural Electrification projects.

PERFORMANCE OF DEPARTMENT AND UNIT OF THE DSITRICT ASSEMBLY ENVIRONMENTAL MANAGEMENT

ENVIRONMENTAL HEALTH AND SANITATION UNIT

Total staff strength - 9

Activities undertaken

- ❖ Screening and certification of food vendors
- ❖ Undertook education on Community Led Total Sanitation in 45 communities

- ❖ Undertook disinfestations of ruminants and plants exercise in the four quarters of the year using residual chemicals and achieving appreciable results
- ❖ Sensitization and education on food hygiene across the district
- ❖ Undertook clean up exercises in some major towns of the district
- ❖ Inspection and testing of slaughter animals

Challenges

- ❖ Polythene menace remains a major challenge which is a threat to ecology, animals and agriculture
- ❖ Inadequate household and institutional latrines thereby making residents to use open defecation
- ❖ Chemical food poisoning as a result of chemical storage of food stuffs, infested animals resulting in the admission of nine people admitted at hospital for eating poisoned meat.
- ❖ Lack of logistics
- ❖ Office and residential accommodation problems
- ❖ Lack of Transport
- ❖ Inadequate staff
- ❖ Lack of slaughter house and slabs for proper meat inspection
- ❖ Inadequate funds for organization of durbars
- ❖ Poor attitude of resident towards sanitation activities

National Indicator

Hectares of degraded forest, mining, dry and wet lands rehabilitated/restored

The District does not have data on hectares on forest, mining, dry and wet lands rehabilitated/restored. But it does have data on community forest reserves, woodlots, and nurseries hence the under mentioned District specific indicator

District specific indicator

No. of forest reserves, community woodlots and community based nurseries

There has not been much improvement in this sector. The number of Community Forest Reserve is one.

CHAPTER FOUR

OIL AND GAS DEVELOPMENT

On oil and gas the District has no data to report on that.

NATIONAL YOUTH EMPLOYMENT PROGRAMME

The National Youth Employment Programme has no office in the District as at the reporting period because it is still under Bawku Municipal.

CHAPTER FIVE

INFRASTRUCTURE AND HUMAN SETTLEMENTS

COMMUNITY WATER AND SANITATION AGENCY

Various categories of projects were being executed under the CWSA

SMALL TOWN WATER SYSTEMS

There was one Small Town Water and Sanitation Project on going at Widana.

BOREHOLES

Over the period under review the following boreholes were drilled and installed;

- ❖ 8No. boreholes under District Development Facility (DDF)
- ❖ 11No. boreholes under Community Water and Sanitation Agency (CWSAF)
- ❖ 18No. boreholes under Ministry of Education GPEG Project

DISTRICT DEVELOPMENT FACILITY (DDF) PROJECTS

The under listed projects were solely financed by District Development Facility Grant (DDF), were completed and handed over during the period under review.

- ❖ Construction of Maternity Block at Pusiga Health Center
- ❖ Supply of Clinical Equipment to Maternity Block at Pusiga Health Center
- ❖ Construction and Installation of 8.No. Boreholes
- ❖ Supply of 200No. Low Tension Poles

DISTRICT ASSEMBLY COMMON FUND (DACF) PROJECTS

The under listed projects were solely financed by District Assembly's Common Fund (DACF), were completed and handed over during the period under review.

- ❖ Renovation of DA Building for Rural enterprise project
- ❖ Renovation of Tourism Building for Ghana Health Service Directorate
- ❖ Supply of office Furniture to the District Assembly
- ❖ Supply of Office Equipment to the District Assembly
- ❖ Supply of Building Permit to the District Assembly
- ❖ Intercom Connectivity of District Assembly's Central Administration Block
- ❖ Rewiring of District Assembly's Central Administration Block
- ❖ Opening up and Grading of Roads

CHAPTER SIX

Human Development, Productivity and Employment

The tables below show the Core and District specific indicators for Human development, productivity and employment.

HEALTH

TYPE OF FACILITY	NO
Hospital (Private)	1
Health centre	4
Clinic	4
CHPS	5
Private Maternity Home	-
Private Clinic	2

Personnel

PERSONNEL	PUBLIC	PRINATE
Medical Doctor	0	2
Medical Assistants	2	1
Nurses	55	13
Community Health Nurses/CHOs	29	0
Midwives	0	8
Reg. General Nurses	6	3
Community Psychiatric Nurses	2	0
Public Health Nurses	1	0
Enrolled Nurses/Health Assistance	8	7
Dispensary Officers	3	0

- Population Doctor Ratio is 1:37,770
- There is only one private Hospital in the District. Another nearest hospital is about 18 kilometers away, Presby Hospital Bawku.
- The Nurse population ratio is 1:1,110.9

There are three health centres in the District, which are ill equipped to function properly. These health centres are located in Pusiga, Kulungugu and Widana. These Health centers need to be well equipped whiles the Pusiga health center be upgraded into a District Hospital. There is the need to provide certain logistics such as motorbikes, fridges among others, for the health centres and more personnel to help improve the health situation in the District.

The District, because of her geographical location is CSM prone area. The common diseases are malaria, T.B and HIV/AIDS. The table below shows the top ten diseases for the period January to December 2011.

TOP TEN CAUSES OF OPD ATTENDANCE 2013

NO.	DISEASE	NO OF PEOPLE AFFECTED	%
1	Malaria	26522	73.9
2	ARI	5516	176.3
3	Diarrhea Disease	2160	11.5
4	Skin Diseases	872	4.5
5	Pneumonia	865	1.8
6	Int. Worms	521	1.1
7	RTA	437	1.9
8	Eye Infection	434	0.9
9	UTI	279	0.5
10	Ear Infection	248	0.5
	Total	47854	100%

STATUS OF CHPS IMPLEMENTATION

Demarcated Zones	6
Functional CHPS zones	5
New Functional CHPS zones created in 2013	0
Functional zones with Compounds	5
Functional zones with midwives	0
Completed CHPS zones	5
New compounds built in 2013	0
Population covered by CHPS	29,627 (45.1%)
Communities covered by CHPS	34 (44.7%)

CHPS Zones & Staffing

CHPS Zones	Staff category				
	CHOs	CHNs	Midwives	EN	TOTAL
Kultamsi CHPS	0	2	0	0	2
Nakom CHPS	1 (MTS)	3	1	1	6
Sarabogo CHPS	1	3	1	0	5
Tindanatinga CHPS	0	2	0	0	2
Zuabulga CHPS	0	4 (1MTS)	0	0	4
TOTAL	2	14	2	1	19

22

**CHPS CONTRIBUTION (%) TO SERVICE
DELIVERY, 2011-2013 (1/2yr)**

Indicator	2011	2012	2013
BCG	28.9	18.6	16.7
Penta 3	37.2	32.4	28.3
Measles 1	44.8	35.2	33.4
TT2+ (preg)	7.3	4.0	1.3
ANC Registrants	1.8	3.7	0.4
Skilled Deliveries	0.0	0.1	0.0
PNC Registrants	14.1	18.2	11.7
FP acceptors	-	27.9	25.8
PP Vit A	8.6	11.6	27.1
IPTp 3 uptake	0.6	6.7	0.0
OPD attendance	2.0	2.9	2.1

CHPS Contribution RCH (Annual)

Indicators	2010	2011	2012	2013
F/P acceptors	0.0	0.0	30.1	28.8
Total CYP	0.0	0.0	16.7	19.5
ANC registrants	0.7	1.4	2.5	1.0
1st trimester ANC Reg.	0.4	0.9	2.3	0.6
3rd trimester	1.4	2.1	2.0	3.1
Deliveries	0.0	0.0	0.1	1.7
TT 2+ (Preg)	1.4	2.1	3.7	0.6
PNC registrants	16.2	12.9	14.8	12.4

CHPS Contribution RCH (Annual)

Indicators	2010	2011	2012	2013
F/P acceptors	0.0	0.0	30.1	28.8
Total CYP	0.0	0.0	16.7	19.5
ANC registrants	0.7	1.4	2.5	1.0
1st trimester ANC Reg.	0.4	0.9	2.3	0.6
3rd trimester	1.4	2.1	2.0	3.1
Deliveries	0.0	0.0	0.1	1.7
TT 2+ (Preg)	1.4	2.1	3.7	0.6
PNC registrants	16.2	12.9	14.8	12.4

PMTCT: Pregnant women tested for HIV, 2011-2013

	2010	2011	2012	2013	Target
No. tested	2,720	2,864	2,690	2,664	
% out of expt'd pregnancy)	148.1	154.1	143.0	139.9	100.0
% out of ANC registrants	87.7	90.8	83.3	89.5	100.0

FAMILY PLANNING

CYP 2010-2013

Sub-district	Total couple year protection 2012	Total couple year protection 2013
Kulungugu/K	308.9	197.2
Nakom/ Z	66.3	103.1
Pusiga	459.2	667.9
Sarabogo	47.5	50.5
Widana	374.4	382.8

Institutional Maternal Deaths and still births
(Target: <100/100,000 LB)

Indicator	2010	2011	2012	2013
Live births	1599	1828	1970	2295
No. of deaths	0	0	0	1
No. Audited	0	0	0	1
MMR/100,000 LB	0	0	0	43.57
Still births	17	20	23	22
% still births	1.1	1.1	1.2	0.9

The death occurred at Bawku Presby Hospital and is captured by the Hospital₈₁

**Reasons attributed to maternal
deaths and still births**

- Late care seeking
- low interest in antenatal service by community members
- Some of the still birth can be attributed to the fact that some women are using cytotec to enable them deliver early
- Interventions like maternal and newborn care project has helped improve in the deliveries over the years
- Poor male involvement in antenatal services

District Performance-NMCCSP

INDICATOR	NUMBER	PERCENTAGE
CHN <2yrs registered	1281	
Attendance	472	65.2
Adequate growth	401	85.5
Inadequate growth for two continuous months	60	12.7
Immunized by age	412	87.3
Vitamin A	196	53.8
Exclusive BF	66	61.1
Timely compl. Feeding	145	100
Post Partum Vitamin A	27	73.0
Diarrhoea	8	1.7
ORS	6	75.0
Preg. Women registered	646	

Cases Treated & Referrals, 2013

Condition	Total	Treatment given			
		AA	Amoxicillin	ORS	Zinc
Malaria	52	52			
ARI	11		11		
Diarrhoea	50			50	46
TOTAL	113	52	11	50	46
Referrals	12				

89

Contribution of CHAG and Private facility to overall service delivery in the district

Organisation unit	Malaria cases - 2010	Malaria cases- 2011	Malaria cases - 2012	Malaria cases -2013
District total	51879	38328	43139	68482
Akunye Clinic	22848	11863	20533	45630
% coverage	28.64	36.06	22.03	11.21
Widana Health Centre	14856	13822	9502	7676
% coverage	44.04	30.95	47.60	66.63
	OPD Per capita 2010	OPD Per capita 2011	OPD Per capita 2012	OPD Per capita 2013
District Population	63341	64101	64870	65649
Akunye Clinic	31790	17210	25756	67861
OPD Per capita	0.50	0.27	0.40	1.03
Widana Health Centre	18438	22321	26571	24108
OPD Per capita	0.29	0.35	0.41	0.37₀₄

Contribution of CHAG and Private facility (Deliveries and PNC)

Organisation unit	Total Deliveries2013	Total Deliveries2011	Total Deliveries2012	Total Deliveries2013
District total	2317	1993	1848	1616
Akunye Clinic	545	206	149	31
% coverage	41.26	46.91	44.75	41.15
Widana Health Centre	956	935	827	665
% coverage	23.52	10.34	8.06	1.92
Organisational unit	Number of postnatal reg 2010	Number of postnatal reg 2011	Number of postnatal reg 2012	Number of postnatal reg 2013
District total	2295	2202	2290	2317
Akunye Clinic	30	95	199	372
% coverage	32.64	37.78	38.56	40.96
Widana Health Centre	749	832	883	949
% coverage	1.31	4.31	8.69	16.06₅

**Contribution of CHAG and Private facility
(BCG and Measles)**

Organisation unit	Measles 1 ,2010	Measles 1 ,2011	Measles 1 ,2012	Measles 1 ,2013
District total	2591	2585	2542	2774
Akunye Clinic	0	0	0	0
% coverage	0	0	0	0
Widana Health Centre	712	666	835	1077
% coverage	27.48	25.76	32.85	38.82
Organisational unit	BCG ,2010	BCG 2011	BCG 2012	BCG 2013
District total	2888	2800	2814	3139
Akunye Clinic	0	0	0	0
% coverage	0	0	0	0
Widana Health Centre	856	975	1071	1284
% coverage	29.64	34.82	38.06	40.90

96

**Contribution of CHAG and Private facility
(Penta 1 and Penta 3)**

Organisation unit	Penta 1,2010	Penta 1,2011	Penta 1,2012	Penta 1,2013
District total	2727	2723	2807	2868
Akunye Clinic	0	0	0	0
% coverage	0	0	0	0
Widana Health Centre	852	874	1060	1115
% coverage	31.24	32.10	37.76	38.88
Organisational unit	Penta 3,2010	Penta 3,2011	Penta 3,2012	Penta 3,2013
District total	2515	2602	2593	2779
Akunye Clinic	0	0	0	0
% coverage	0	0	0	0
Widana Health Centre	787	711	921	1060
% coverage	31.29	27.33	35.52	38.14

97

NIDs 2013

Sub-district	Target		Services		Coverages	
	OPV	VitA	OPV	VitA	OPV	VitA
Kulungugu/ Kultamse	2905	2615	3180	2615	109.5	100.0
Nakom/Zua buliga	3630	3267	3224	2831	88.8	86.7
Pusiga Central	2960	2664	3152	2633	106.5	98.8
Sarabogo	1720	1548	2024	1447	117.7	93.5
Widana	5074	4567	4760	4219	93.8	92.4
Total	16289	14660	16340	13745	100.3	93.8

NTDs

Sub district	Pop reg.	No. treated	Coverage (%)	Refusals	Absent	Non - eligible
Widana	18,147	13,983	77.1	219	2,424	1,521
Pusiga	10,526	8,909	84.6	86	1,238	293
Nakom/ Zuabuliga	11,180	8,473	75.8	222	1,787	705
Kulungugu/K ultamse	10,926	7,980	73.0	294	1,888	767
Sarabogo	6,415	4,748	74.0	274	1,090	303
TOTAL	57,194	44,093	77.1	1,095	8,427	3,589

Outlook for 2014

- Strengthen CHPS implementation
 - Implement CHNs/CHOs operations by EAs
 - Deploy post updated staff mix to CHPS
 - Complete accreditation of CHPS zones for NHIS
 - Open separate bank accounts for CHPS
- Improve FH services
 - Procure HB test kits and other supplies for lab services
 - Continue to support training of midwives
- Improve disease surveillance and response
 - Expand lab services, etc
- Roll out DHIMS entries to facilities with electricity
- Regularize monthly support visits/data validation
- Provide monthly feedback to all facilities
- Produce quarterly district bulletin

100

Comments

- Despite challenges with resource flow, most health indicators saw increases
- Self-sacrifice and dedication from facility staff played the lead role in these achievements

105

GHANA EDUCATION SERVICE

**SUMMARY OF PUBLIC BASIC SCHOOLS ENROLMENT AND STAFFING
FIGURES FOR
2012/2013 ACADEMIC YEAR**

NO	LEVEL	NO. F SCHOO LS	ENROLMENT			TEACHERS				
			BOYS	GIRLS	TOTAL	TRAINED		UNTRAINED		TOTAL
						M	F	M	T	
1	KG	35	1570	1574	3144	3	4	5	19	31
2	PRIMAR Y	36	6527	5825	12352	58	19	75	23	175
3	JHS	12	1733	1462	3195	36	3	19	1	59
	TOTAL	83	9830	8861	18691	97	26	99	45	265

**SUMMARY OF PRIVATE BASIC SCHOOLS ENROLMENT AND STAFFING
FIGURES FOR
2012/2013 ACADEMIC YEAR**

NO	LEVEL	NO. F SCHOLS	ENROLMENT			TEACHERS				
			BOYS	GIRLS	TOTA L	TRAINED		UNTRAINED		TOTAL
						M	F	M	T	
1	KG	5	240	212	452	0	0	2	5	7
2	PRIMA RY	5	467	329	796	0	0	17	6	23
3	JHS	2	26	25	51	0	0	7	1	8
	TOTAL	12	733	566	1299	0	0	26	12	38

ENROLMENT AND STAFFING FIGURES 2012/2013 ACADEMIC YEAR

NO	SCHOOL	ENROLMENT							TEACHERS				
		KG1		KG2	TOTAL		GDT	TRAINED TRS		UNTRAINED TRS		TOTAL	
		B	G	B	G	B		G	M	F	M		F
1.	PUSIGA PRACTICE NO. 1 KG	15	19	14	8	29	27	56	0	0	0	0	0
2.	ADABIA E/A KG	15	20	23	25	38	45	83	0	0	0	0	0
3.	BENGULA KG	21	31	27	15	48	46	94	0	0	0	0	0
4.	HIDAYATUL KG	0	0	28	25	28	25	53	0	0	1	0	1
5.	KUNJAM KG	29	31	15	25	44	56	100	0	1	0	0	1
6.	NINKOGO KG	35	28	26	29	61	57	118	0	0	1	1	2
7.	PIALOKO KG	24	24	0	0	24	24	48	0	0	0	1	1
8.	PUSIGA PRACTICE NO. 2 KG	10	15	15	12	25	27	52	0	0	0	0	0
9.	SARABOGO KG	7	9	11	10	18	19	37	0	0	0	1	1
10.	SUGUDI KG	28	30	17	23	45	53	98	2	0	0	0	2
11.	TINDANATINGA KG	15	24	36	28	51	49	100	0	0	0	0	0
12.	YARIGA KG	50	45	30	25	80	70	150	0	0	0	2	2
13.	ZONG-NATINGA KG	15	17	21	18	36	35	71	0	0	1	0	1
14.	KOGADIM KG	36	65	33	39	69	103	172	0	0	0	1	1
15.	ASUNTAABA KG	34	26	9	12	43	38	81	0	0	0	1	1

16	BULUGU A/G KG	35	32	32	29	67	61	128	0	1	0	0	1
17	GAMBUDUGU KG	10	8	13	11	23	19	42	0	0	0	0	0
18	KOLPELIGO KG	15	18	16	18	31	36	67	1	0	0	0	1
19	KULUNGUNBU KG	30	40	30	35	60	75	135	0	0	0	0	0
20	DABIA KG	21	29	15	10	36	39	75	0	1	0	1	2
21	DEEGA A/G. KG	10	13	22	14	32	27	59	0	0	0	2	2
22	NAKAMBO KG	26	24	17	23	43	47	90	0	0	0	0	0
23	NAKOM M/A KG	26	26	49	48	75	74	149	0	0	0	1	1
24	TES-NATINGA KG	22	27	22	27	44	54	98	0	0	0	1	1
25	ZUABULIGA KG	27	19	17	11	44	30	47	0	0	0		0
26	LATEGA KG	35	37	33	26	68	63	131	0	0	0	1	1
27	SANGA KG	7	13	0	0	7	13	20	0	0	0		0
28	GBEWAAH TR. COLLEGE KG	26	28	38	32	64	60	124	0	0	0	2	2
29	HAIRIYA KG	19	12	17	18	36	30	66	0	0	0		0
30	BELINTANGA KG	30	20	0	0	30	20	50	0	0	1	0	1
31	HAIRIYIYA KG	7	10	8	8	15	18	33	0	0	1	0	1
32	KOOSE KG	36	24	33	42	69	66	135	0	1	0	0	1
33	WIDANA KG	40	51	24	30	64	81	145	0	0	0	2	2
34	DAWARE M/A KG	51	40	23	16	74	56	130	0	0	0	1	1
35	BIMPIELA KG	7	7	42	24	49	31	80	0	0	0	1	1

	TOTAL	814	859	756	715	1570	1574	3144	3	4	5	19	31
--	--------------	------------	------------	------------	------------	-------------	-------------	-------------	----------	----------	----------	-----------	-----------

ENROLMENT AND STAFFING FIGURES 2012/2013 ACADEMIC YEAR

#	SCHOOL	ENROLMENT															TEACHERS				
		BS1		BS2		BS3		BS4		BS5		BS6		TOTAL		GDT	TRAIN ED TRS		UNTR AINE D TRS		T O T A L
		B	G	B	G	B	G	B	G	B	G	B	G	B	G		M	F	M	F	
1.	PUSIGA PRACTICE NO. 1	58	54	55	58	48	37	48	54	80	70	49	51	338	324	662	4	2			6
2.	ADABIA E/A PRIMARY	25	21	29	22	17	28	13	30	31	24	36	23	168	148	316	2	1	2		5
3.	BENGULA PRIMARY	25	20	27	23	32	21	32	28	20	27	24	26	160	145	305	2		1		3
4.	HIDAYATUL PRIMARY	21	16	32	30	38	21	40	29	38	40	70	39	239	175	414	1	4	2		7
5.	KUNJAM PRIMARY	40	29	16	19	18	17	15	8	6	9	19	11	114	93	207		1	3		4
6.	NINKOGO PRIMARY	50	48	65	52	58	49	63	54	60	54	52	51	348	308	656	2	1	2	1	6
7.	PIALOKO PRIMARY	34	23	24	26	33	26	22	15	19	11	10	7	142	108	250	1		2	3	6
8.	PUSIGA PRACTICE NO. 2 PRIM.	30	24	37	32	56	36	54	45	57	46	48	35	282	218	500	2	2	0		4
9.	SARABOGO PRIMARY	10	11	53	49	26	30	21	10	23	9	15	12	148	121	269	1	1	1		3
10.	SUGUDI PRIMARY	28	25	20	18	17	17	8	4	11	8	32	27	116	99	215	1		4	1	6
11.	TINDANATINGA PRIMARY	37	22	16	17	17	19	23	18	12	16	15	12	120	104	224	1		1		2
12.	YARIGA PRIMARY	33	27	30	25	22	21	32	19	22	12	19	15	158	119	277	1	1	4		6

13.	ZONG-NATINGA PRIMARY	21	34	18	34	22	24	39	22	28	28	22	30	150	172	322	1		4	1	6
14.	KOGADIM PRIMARY	24	14	6	12	15	18	12	14	8	7	8	5	73	70	143		1	3		4
15.	ASUNTAABA PRIMARY	29	22	19	16	14	14	20	9	26	18			108	79	187	1		1	2	4
16.	BULUGU A/G PRIMARY	48	51	40	47	35	29	24	20	20	31	15	22	182	200	382	3			1	4
17.	GAMBUDUGU PRIMARY	26	28	24	25	17	21	20	3	17	16	10	7	114	100	214	3		1		4
18.	KOLPELIGO PRIMARY	28	32	12	8	6	14	6	5	7	7	4	5	63	71	134			3	2	5
19.	KULUNGUNMBU PRIMARY	60	50	27	76	58	76	61	62	54	49	42	38	302	351	653		1	3	1	5
20.	DABIA PRIMARY	39	42	53	33	30	33	30	20	25	26	31	29	208	183	391	1		5		6
21.	DEEGA A.G. PRIMARY	68	55	83	58	80	52	87	58	70	76	84	76	472	375	847	5		6	2	13
22.	NAKAMBO PRIMARY	22	16	26	24	27	22	22	27	21	16	18	14	136	119	255	1		1	1	3
23.	NAKOM M/A PRIMARY	49	60	60	51	42	45	54	50	69	56	66	60	340	322	662	3		5		8
24.	TES-NATINGA PRIMARY	20	12	19	20	22	15	23	15	20	10	19	14	123	86	209		1	1	4	6
25.	ZUABULIGA PRIMARY	35	52	35	57	32	42	43	26	32	20	14	29	191	226	417	2		4		6
26.	LATEGA PRIMARY	25	22	20	14	31	13	22	15	25	12			113	76	189	1		1	1	3
27.	SANGA PRIMARY	17	13	25	15	5	5							47	33	80			3		3
28.	GBEWAAH TR. COLLEGE PRIM.	57	47	57	60	72	72	76	73	70	85	82	53	414	390	804	3		1		4
29.	HAIRIYA PRIMARY	15	16	15	16	12	14	7	13	7	4	6	8	62	71	133	2	1			3
30.	KULTAMSE PRESBY PRIMARY	52	53	34	25	38	35	48	32	19	30	38	20	229	195	424	3		3		6

31.	BELINTANGA PRIMARY	25	32	25	28	26	27	27	32					103	119	222					0
32.	HAIRIYA PRIMARY	5	10	3	3	5	5							13	18	31					0
33.	KOOSE PRIMARY	36	28	33	25	21	18	28	11	30	27	30	15	178	124	302	2	1	3		6
34.	WIDANA PRIMARY	30	29	50	51	73	43	78	76	68	55	71	65	370	319	689	6	1	1		8
35.	DAWARE M/A PRIMARY	32	31	39	24	27	17	17	8	7	9	9	4	131	93	224	1		2	2	5
36.	BIMPIELA PRIMARY	21	21	8	11	16	12	6	11	11	8	10	8	72	71	143	2		2	1	5
	TOTAL	11	10	11	11	109	98	11	916	10	91	96	81	65	58	123	58	1	7	2	17
		57	90	35	04	8	8	38		13	6	8	1	27	25	52	9	5	3	5	

ENROLMENT AND STAFFING FIGURES JHS 2012/2013 ACCADEMIC

N O.	SCHOOL	ENROLMENT								GDT	TEACHERS				
		JHS 1		JHS 2		JH S 3		TOTAL			M	F	UNTRAI NED TRS		TOT AL
		B	G	B	G	B	G	B	G				M	F	
1.	BENGULA JHS	40	23	0	0	0	0	40	23	63	0	0	0	0	0
2.	HIDAYATUL JHS	40	35	0	038	064	0	40	35	75	0	0	2	0	2
3.	KULTAMSE J.H.S	49	54	64	66	56	34	177	126	303	4	0	0	0	4
4.	NINKOGO J.H.S.	65	64	59	54	30	45	180	175	355	5	0	2	0	7
5.	PUSIGA J.H.S.	70	60	76	42	68	40	176	154	330	4	1	2	0	7

6.	WIDANA J.H.S.	65	77	66	44	33	56	199	175	374	4	0	4	0	8
7.	ZONG-NATINGA J.H.S	29	33	46	70	80	21	108	98	206	3	0	3	0	6
8.	GBEWAA COL. OF EDU. J.H.S.	56	50	73	55	36	67	209	187	396	3	1	0	0	4
9.	KULUNGUNGU J.H.S.	71	92	48	67	50	19	155	166	321	4	0	0	0	41
10.	DEEGA J.H.S	83	43	105	25	41	45	238	155	393	7	0	3	1	11
11.	NAKOM J.H.S	53	39	48	27		31	142	95	237	2	0	0	0	2
12.	ZUABULIGA J.H.S.	28	46	41	488	458		69	73	142	0	1	3	0	4
	TOTAL	649	616	626			358	1733	1462	3195	36	3	19	1	59

PRIVATE SCHOOLS ENROLMENT AND STAFFING FIGURES AS AT NOVEMBER ENDING 2012/2013 ACADEMIC YEAR

N O		ENROLMENT						TEACHERS					
		KG 1		KG 2		TOTAL		GDT	TRAINED TRS		UNTRAINED TRS		TOTAL
		B	G	B	G	B	G		M	F	M	F	
1	AGAPE KG	31	19	27	19	58	3837	96	0	0	0	2	2
2	WUSUPHO TRUST KG	17	22	8	15	25	35	62	0	0	1	0	1
3	CHRIST THE KING KG	20	17	16	18	36	70	71	0	0	0	1	1
4	SHELTERS KG	66	55	17	15	83	32	153	0	0	1	1	2
5	HUMANIST KG	18	22	20	10	38	212	70	0	0	0	1	1
	TOTAL	152	135	88	77	240		452	0	0	2	5	7

PRIVATE SCHOOLS ENROLMENT AND STAFFING FIGURES 2012/2013 ACADEMIC YEAR

N O	SCHOOL	ENROLMENT														TEACHERS				TO TA L	
		BS 1		BS 2		BS 3		BS 4		BS5		BS 6		TOTAL		GDT	TRAIN ED TRS.		UNTRAI NED TRS		
		B	G	B	G	B	G	B	G	B	G	B	G	B	G		M	F	M		F
1.	AGAPE PRIMARY	39	22	33	18	37	14	21	20	21	9	14	14	165	97	262	0	0	6	1	7
2.	WUSUPHO TRUST	19	16	16	21	28	21	0	0	0	0	0	0	63	58	121	0	0	2	1	3
3.	CHRIST THE KING	35	20	26	27	20	9	16	12	20	8	0	0	117	76	193	0	0	6	0	6
4.	SHELTERS INT'L PRIM	28	19	0	0	0	0	0	0	0	0	0	0	28	19	47	0	0	0		1
5.	HUMANIST PRIM.	20	16	21	17	22	20	10	12	17	10	4	4	94	79	173	0	0	2	4	6
	TOTAL	141	93	96	83	107	64	47	44	58	27	18	18	467	329	796	0	0	17	6	23

PRIVATE SCHOOLS ENROLMENT AND STAFFING FIGURES FOR 2012/2013 ACADEMIC YEAR

NO.	SCHOOL	ENROLMENT									TEACHERS				
		JHS 1		JHS2		JHS 3		TOTAL		GDT	TRAINED TRS		UNTRAINED TRS		TOTAL
		B	G	B	G	B	G	B	G		M	F	M	F	
1.	AGAPE JHS	13	8	9	9	0	0	22	17	39	0	0	4	0	4
2.	HUMANIST INT'L JHS	4	8	0	0	0	0	4	8	12	0	0	3	1	4
	TOTAL	17	16	9	9	0	0	26	25	51	0	0	7	1	8

LIST OF SCHOOLS WITH TOILETS**LIST OF SCHOOLS WITHOUT TOILETS**

NO.	NAME OF SCHOOL	NO	NAME OF SCHOOL
1.	ADABIA E/A KG	1.	PUSIGA PRACTICE NO. 1 KG
2.	BENGULA KG	2.	SARABOGO KG
3.	HIDAYATUL KG	3.	SUGUDI KG
4.	KUNJAM KG	4.	TINDANATINGA KG
5.	NINKOGO KG	5.	YARIGA KG
6.	PIALOKO KG	6.	ZONG-NATINGA KG
7.	PUSIGA PRACTICE NO. 2 KG	7.	ASUNTAABA KG
8.	KOGADIM KG	8.	BULUGU A/G KG
9.	GAMBUDUGU KG	9.	DABIA KG
10.	KOLPELIGO KG	10.	TES-NATINGA KG
11.	KULUNGUNGU KG	11.	LATEGA KG
12.	DEEGA A.G. KG	12.	SANGA KG
13.	NAKAMBO KG	13.	GBEWAAH TRAINING COLLEGE KG
14.	NAKOM M/A KG	14.	BELINTANGA KG
15.	ZUABULIGA KG	15.	HAIRIYIYA KG
16.	HAIRIYA KG	16.	KOOSE KG
17.	DAWARE M/A KG	17.	WIDANA KG
		18.	BIMPIELA KG

LIST OF SCHOOLS WITH TOILETS**LIST OF SCHOOLS WITHOUT TOILETS**

NO.	NAME OF SCHOOL	NO	NAME OF SCHOOL
1.	ADABIA E/A PRIMARY	1.	PUSIGA PRACTICE NO.1 PRIMARY
2.	BENGULA PRIMARY	2.	SARABOGO PRIMARY
3.	HIDAYATUL PRIMARY	3.	SUGUDI PRIMARY
4.	KUNJAM K PRIMARY	4.	TINDANATINGA PRIMARY
5.	NINKOGO PRIMARY	5.	YARIGA PRIMARY
6.	PIALOKO PRIMARY	6.	ZONG-NATINGA PRIMARY
7.	PUSIGA PRACTICE NO. 2 PRIMARY	7.	ASUNTAABA PRIMARY
8.	KOGADIM PRIMARY	8.	BULUGU A/G PRIMARY
9.	GAMBUDUGU PRIMARY	9.	DABIA PRIMARY
10.	KOLPELIGO PRIMARY	10.	TES-NATINGA PRIMARY
11.	KULUNGUNGU PRIMARY	11.	LATEGA PRIMARY
12.	DEEGA A.G. PRIMARY	12.	SANGA PRIMARY
13.	NAKAMBO PRIMARY	13.	GBEWAAH TRAINING COLLEGE PRIMARY
14.	NAKOM M/A PRIMARY	14.	BELINTANGA PRIMARY
15.	ZUABULIGA PRIMARY	15.	HAIRIYIYA PRIMARY G
16.	HAIRIYA PRIMARY	16.	KOOSE PRIMARY
17.	KULTAMISE PRESBY PRIMARY	17.	WIDANA PRIMARY G
18.	DAWARE M/A PRIMARY	18.	BIMPELLA PRIMARY

LIST OF SCHOOLS WITH TOILETS LIST OF SCHOOLS WITHOUT TOILETS

NO.	NAME OF SCHOOL	NO	NAME OF SCHOOL
1.	BENGULA JHS	1.	KULTAMISE JHS
2.	HIDAYATUL JHS	2.	NINKONGO JHS
3.	NAKOM JHS	3.	PUSIGA JHS
4.	ZUABULIGA JHS	4.	WIDANA JHS
		5.	ZONG-NATINGA JHS
		6.	GBEWAA TRAINING COLLEGE JHS
		7.	KULUNGUNGU JHS
		8.	DEEGA JHS

LIST OF SCHOOLS WITH URINALS

**LIST OF SCHOOLS WITHOUT URINALS
URINALS**

NO.	NAME OF SCHOOL	NO	NAME OF SCHOOL
1.	BENGULA KG	1.	PUSIGA PRACTICE NO. 1 KG
2.	HIDAYATUL KG	2.	ADABIA E/A KG
3.	KUNJAM KG	3.	PUSIGA PRACTICE NO. 2 KG
4.	NINKOGO KG	4.	SUGUDI KG
5.	PIALOKO KG	5.	TINDANATINGA KG
6.	SARABOGO KG	6.	YARIGA KG
7.	ZONG-NATINGA KG	7.	ASUNTAABA KG
8.	KOGADIM KG	8.	BULUGU A/G KG
9.	KOLPELIGO KG	9.	GAMBUDUGU KG
10.	DEEGA A.G. KG	10.	KULUNGUNGU KG
11.	ZUABULIGA KG	11.	DABIA KG
12.	GBEWAAH TRAINING COLLEGE KG	12.	NAKAMBO KG

13.	HAIRIYA KG	13.	NAKOM M/A KG
14.	WIDANA KG	14.	TES-NATINGA KG
15.	DAWARE M/A KG	15.	SANGA KG
		16.	BELINTANGA KG
		17.	HAIRIYIYA KG
		18.	KOOSE KG
		19.	BIMPIELA KG
		20.	LATEGA KG

LIST OF SCHOOLS WITH URINALS

LIST OF SCHOOLS WITHOUT URINALS

NO.	NAME OF SCHOOL	NO	NAME OF SCHOOL
1.	BENGULA JHS	1.	KULTAMISE J.H.S
2.	HIDAYATUL JHS	2.	NINKOGO JHS
3.	ZONG-NATINGA JHS	3.	PUSIGA JHS
4.	DEEGA JHS	4.	WIDANA JHS
5.	NAKOM JHS	5.	GBEWAA TRAINING COLLEGE JHS
6.	ZUABULIGA JHS	6.	KULUNGUNGU JHS

LIST OF SCHOOLS WITH WATER**LIST OF SCHOOLS WITHOUT WATER**

NO.	NAME OF SCHOOL	NO	NAME OF SCHOOL
1.	ADABIA E/A KG	1.	PUSIGA PRACTICE NO. 1 KG
2.	BEGULA KG	2.	HIDAYATUL KG
3.	KUNJAM KG	3.	PIALOKO KG
4.	NINKOGO KG	4.	SARABOGO KG
5.	PUSIGA PRACTICE NO 2 KG	5.	SUGUDI KG
6.	YARIGA KG	6.	TINDANATINGA KG
7.	BULUGU A/G KG	7.	ZONG-NATINGA KG
8.	KULUNGUNGU KG	8.	KOGADIM KG
9.	DEEGA A/G. KG	9.	ASUNTAABA KG
10.	NAKAMBO KG	10.	GAMBUDUGU KG
11.	TES-NATINGA KG	11.	KOLPELIGO KG
12.	GBEWAAH TRAINING COLLEGE KG	12.	DABIA KG
13.	HAIRIYIYA KG	13.	ZUABULIGA KG
14.	KOOSE KG	14.	LATEGA KG
		15.	SANGA KG
		16.	BELINTANGA KG
		17.	WIDANA KG
		18.	DAWARE M/A KG
		19.	BIMPIELA KG
		20.	NAKOM M/A KG

LIST OF SCHOOLS WITH WATER**LIST OF SCHOOLS WITHOUT WATER**

NO.	NAME OF SCHOOL	NO	NAME OF SCHOOL
1.	ADABIA E/A PRIMARY	1.	PUSIGA PRACTICE NO. 1 PRIMARY
2.	BEGULA PRIMARY	2.	HIDAYATUL PRIMARY
3.	KUNJAM PRIMARY	3.	PIALOKO PRIMARY
4.	NINKOGO PRIMARY	4.	SARABOGO PRIMARY
5.	PUSIGA PRACTICE NO 2 PRIMARY	5.	SUGUDI PRIMARY
6.	YARIGA PRIMARY	6.	TINDANATINGA PRIMARY
7.	BULUGU A/G PRIMARY	7.	ZONG-NATINGA PRIMARY
8.	KULUNGUNGU PRIMARY	8.	KOGADIM PRIMARY
9.	DEEGA A.G. PRIMARY	9.	ASUNTAABA PRIMARY
10.	NAKAMBO PRIMARY	10.	GAMBUDUGU PRIMARY
11.	TES-NATINGA PRIMARY	11.	KOLPELIGO PRIMARY
12.	GBEWAAH TRAINING COLLEGE PRIMARY	12.	DABIA PRIMARY
13.	HAIRIYA PRIMARY	13.	NAKOM M/A PRIMARY
14.	KULTAMISE PRESBY PRIMARY	14.	ZUABULIGA PRIMARY
15.	HARIYIYA PRIMARY	15.	LATEGA PRIMARY
16.	KOOSE PRIMARY	17.	SANGA PRIMARY
		18.	BELINTANGA PRIMARY
		19.	WIDANA PRIMARY
		20.	DAWARE M/A PRIMARY
		21.	BIMPIELA PRIMARY

LIST OF SCHOOLS WITH WATER**LIST OF SCHOOLS WITHOUT WATER**

NO.	NAME OF SCHOOL	NO	NAME OF SCHOOL
1.	BENGULA JHS	1.	HIDAYATUL JHS
2.	NINKOGO JHS	2.	KULTAMISE JHS
3.	GBEWAA TRAINING COLLEGE JHS	3.	PUSIGA JHS
4.	KULUNGUNGU JHS	4.	WIDANA JHS
5.	DEEGA JHS	5.	ZONG-NATINGA JHS
6.	NAKOM JHS	6.	ZUABULIGA JHS

LIST OF SCHOOLS WITH AND**WITHOUT ELECTRICITY**

NO.	NAME OF SCHOOL	NO	NAME OF SCHOOL
1.	KULUNGUNGU KG	1.	PUSIGA PRACTICE NO. 1 KG
2.	GBEWAAH TRAINING COLLEGE KG	2.	ADABIA E/A KG
		3.	BENGULA KG
		4.	HIDAYATUL KG
		5.	KUNJAM KG
		6.	NINKOGO KG
		7.	PIALOKO KG
		8.	PUSIGA PRACTICE NO. 2 KG
		9.	SARABOGO KG
		10.	TINDANATINGA KG
		11.	YARIGA KG
		12.	ZONG-NATINGA KG
		13.	KOGADIM KG
		14.	ASUNTAABA KG
		15.	BIMPIELA KG
		16.	BULUGU A/G KG

	17.	GAMBUDUGU KG
	18.	KOLPELIGO KG
	19.	DABIA KG
	20.	DEEGA A.G. KG
	21.	NAKAM M/A KG
	22.	NAKAMBO KG
	23.	TES-NATINGA KG
	24.	ZUABULIGA KG
	25.	LATEGA KG
	26.	SANGA KG
	27.	HAIRIYA KG
	28.	BELINTANGA KG
	29.	HAIRIYIYA KG
	30.	KOOSE KG
	31.	WIDANA KG
	32.	DAWARE M/A KG
	33.	SUGUDI KG

LIST OF SCHOOLS WITH AND WITHOUT ELECTRICITY

NO.	NAME OF SCHOOL	NO	NAME OF SCHOOL
1.	KULUNGUNGU PRIMARY	1.	PUSIGA PRACTICE NO. 1 PRIMARY
2.	GBEWAAH TRAINING COLLEGE PRIMARY	2.	ADABIA E/A PRIMARY
		3.	BENGULA PRIMARY
		4.	HIDAYATUL K PRIMARY
		5.	KUNJAM PRIMARY
		6.	NINKOGO PRIMARY
		7.	PIALOKO PRIMARY
		8.	PUSIGA PRACTICE NO. 2 PRIMARY
		9.	SARABOGO PRIMARY
		10.	TINDANATINGA PRIMARY
		11.	YARIGA PRIMARY
		12.	ZONG-NATINGA PRIMARY
		13.	KOGADIM PRIMARY
		14.	ASUNTAABA PRIMARY
		15.	BIMPIELA PRIMARY
		16.	BULUGU A/G PRIMARY
		17.	GAMBUDUGU PRIMARY
		18.	KOLPELIGO PRIMARY
		19.	DABIA PRIMARY
		20.	DEEGA A.G. PRIMARY
		21.	NAKAMBO PRIMARY
		22.	NAKOM M/A PRIMARY
		23.	TES-NATINGA PRIMARY
		24.	ZUABULIGA PRIMARY
		25.	LATEGA PRIMARY
		26.	SANGA PRIMARY

CLASSROOMS SITUATIONS**LIST OF SCHOOLS AND THE CLASSROOMS AVAILABLE**

NO	SCHOOL	CLASSROOMS AVAILABLE	NO. NEEDING MAJOR REPAIRS
1.	PUSIGA PRACTICE NO. 1 PRIMARY	7	2
2.	ADABIA E/A PRIMARY	6	0
3.	BENGULA PRIMARY	6	0
4.	HIDAYATUL PRIMARY	6	0
5.	KUNJAM PRIMARY	6	0
6.	NINKOGO PRIMARY	6	0
7.	PIALOKO PRIMARY	6	0
8.	PUSIGA PRACTICE NO 2 PRIMARY	6	2
9.	SARABOGO PRIMARY	3	0
10.	SUGUDI PRIMARY	3	3
11.	TINDANATINGA PRIMARY	3	0
12.	YARIGA PRIMARY	6	3
13.	ZONG-NATINGA PRIMARY	3	3
14.	KOGADIM PRIMARY	6	0
15.	ASUNTAABA PRIMARY	6	0
16.	BULUGU A/G PRIMARY	6	0
17.	GAMBUDUGU PRIMARY	3	0
18.	KOLPELIGO PRIMARY	6	1
19.	KULUNGUMGU PRIMARY	6	0
20.	DABIA PRIMARY	6	0
21.	DEEGA A.G. PRIMARY	12	0
22.	NAKAMBO PRIMARY	5	0
23.	NAKOM M/A PRIMARY	7	4
24.	TES-NATINGA PRIMARY	6	0
25.	ZUABULIGA PRIMARY	6	0

26.	LATEGA PRIMARY	2	0
27.	SANGA PRIMARY	3	0
28.	GBEWAAH TRAINING COLLEGE PRIMARY	6	0
29.	HAIRIYA PRIMARY	3	0
30.	KULTAMISE PRESBY PRIMARY	4	1
31.	BELINTANGA PRIMARY	2	0
32.	HAIRIYIYA PRIMARY	0	0
33.	KOOSE PRIMARY	6	0
34.	WIDANA PRIMARY	8	3
35.	DAWARE M/A PRIMARY	6	0
36.	BIMPIELA PRIMARY	0	0
	TOTAL	182	22

CLASSROOMS SITUATIONS

LIST OF SCHOOLS AND THE CLASSROOMS AVAILABLE TO THEM

NO	SCHOOL	CLASSROOMS AVAILABLE	NO. NEEDING MAJOR REPAIRS
1.	BENGULA JHS	3	0
2.	HIDAYATUL JHS	3	0
3.	KULTAMISE JHS	3	0
4.	NINKOGO JHS	3	0
5.	PUSIGA JHS	3	0
6.	WIDANA JHS	3	0
7.	ZONG-NATINGA JHS	2	2
8.	GBEWAA TRAINING COLLEGE JHS	3	0
9.	KULUNGUNGU JHS	5	0
10.	DEEGA JHS	5	3

11.	NAKOM JHS	3	0
12.	ZUABULIGA JHS	0	0
	TOTAL	36	5

FURNITURE SITUATIONS

LIST OF SCHOOLS WITH SCHOOLS WITH AND WITHOUT DESK

NO	SCHOOL	ENROLMENT	PEOPLE WITH SEATING PLACES	PEOPLE WITHOUT SEATING PLACES	NO. OF DUAL DESK NEED
1.	PUSIGA PRACTICE NO. 1 PRIMARY	662	312	350	175
2.	ADABIA E/A PRIMARY	316	280	36	18
3.	BENGULA PRIMARY	305	170	135	68
4.	HIDAYATUL PRIMARY	414	200	214	107
5.	KUNJAM PRIMARY	207	180	27	14
6.	NINKOGO PRIMARY	656	242	414	207
7.	PIALOKO PRIMARY	250	0	250	125
8.	PUSIGA PRACTICE NO 2 PRIMARY	500	320	180	90
9.	SARABOGO PRIMARY	269	280	0	0
10.	SUGUDI PRIMARY	215	0	215	180
11.	TINDANATINGA PRIMARY	224	152	72	36
12.	YARIGA PRIMARY	277	42	235	118
13.	ZONG-NATINGA PRIMARY	322	72	250	125
14.	KOGADIM PRIMARY	143	200	0	0
15.	ASUNTAABA PRIMARY	187	24	163	82
16.	BULUGU A/G PRIMARY	382	224	158	79
17.	GAMBUDUGU PRIMARY	214	50	164	82
18.	KOLPELIGO PRIMARY	134	80	54	27

19.	KULUNGUNGU PRIMARY	653	292	361	181
20.	DABIA PRIMARY	391	186	205	103
21.	DEEGA A.G. PRIMARY	847	556	291	146
22.	NAKAMBO PRIMARY	255	100	155	78
23.	NAKOM M/A PRIMARY	662	300	362	181
24.	TES-NATINGA PRIMARY	209	0	209	105
25.	ZUABULIGA PRIMARY	417	212	205	103
26.	LATEGA PRIMARY	189	36	153	77
27.	SANGA PRIMARY	80	0	80	40
28.	GBEWAAH TRAINING COLLEGE PRIMARY	804	216	588	294
29.	HAIRIYA PRIMARY	133	136	0	0
30.	KULTAMISE PRESBY PRIMARY	424	278	146	73
31.	BELINTANGA PRIMARY	222	0	222	111
32.	HAIRIYIYA PRIMARY	31	0	31	16
33.	KOOSE PRIMARY	302	140	162	81
34.	WIDANA PRIMARY	689	334	355	178
35.	DAWARE M/A PRIMARY	224	432	0	0
36.	BIMPIELA PRIMARY	143	12	131	66
	TOTAL	12,352	6,058	6,573	3,294

FURNITURE SITUATIONS**LIST OF KGs SCHOOLS WITH AND WITHOUT DESK**

NO	SCHOOL	ENROLMENT	PEOPLE WITH SEATING PLACES	PEOPLE WITHOUT SEATING PLACES	NO. OF DUAL DESK NEED
1.	PUSIGA PRACTICE NO. 1KG	56	28	28	14
2.	ADABIA E/A KG	83	0	83	42
3.	BENGULA KG	94	0	94	47
4.	HIDAYATUL KG	53	0	53	27
5.	KUNJAM KG	100	50	50	25
6.	NINKOGO KG	118	0	118	59
7.	PIALOKO KG	48	0	48	24
8.	PUSIGA PRACTICE NO 2 KG	52	0	52	26
9.	SARABOGO KG	37	0	37	19
10.	SUGUDI KG	98	0	98	49
11.	TINDANATINGA KG	100	0	100	50
12.	YARIGA KG	150	0	150	75
13.	ZONG-NATINGA KG	71	0	71	36
14.	KOGADIM KG	172	0	172	86
15.	ASUNTAABA KG	81	0	81	41
16.	BULUGU A/G KG	128	0	128	64
17.	GAMBUDUGU KG	42		42	21
18.	KOLPELIGO KG	67	0	67	34
19.	KULUNGUNGU KG	135	0	135	68
20.	DABIA KG	75	0	75	38
21.	DEEGA A.G. KG	59	20	39	20
22.	NAKAMBO KG	90	0	90	45
23.	NAKOM M/A KG	149	28	121	61

24.	TES-NATINGA KG	98	0	98	49
25.	ZUABULIGA KG	74	0	74	37
26.	LATEGA KG	131	0	131	66
27.	SANGA KG	20	0	20	10
28.	GBEWAAH TRAINING COLLEGE KG	124	0	124	62
29.	HAIRIYA KG	66	40	26	13
30.	BELINTANGA KG	50	0	50	25
31.	HAIRIYIYA KG	33	0	33	17
32.	KOOSE KG	135	0	125	68
33.	WIDANA KG	145	124	21	11
34.	DAWARE M/A KG	130	0	130	65
35.	BIMPIELA KG	80	34	46	23
	TOTAL	3,144	324	2,820	1,417

FURNITURE SITUATIONS

LIST OF JHS SCHOOLS WITH AND WITHOUT DESK

NO	SCHOOL	ENROLMENT	PEOPLE WITH SEATING PLACES	PEOPLE WITHOUT SEATING PLACES	NO. OF DUAL DESK NEED
1.	BENGULA JHS	63	0	63	32
2.	HIDAYATUL JHS	75	0	75	38
3.	KULTAMISE JHS	303	176	127	64
4.	NINKOGO JHS	355	158	197	100
5.	PUSIGA JHS	330	190	140	70
6.	WIDANA JHS	374	280	94	47
7.	ZONG-NATINGA JHS	206	134	72	36
8.	GBEWAA TRAINING COLLEGE JHS	396	90	306	153
9.	KULUNGUNGU JHS	321	248	73	37
10.	DEEGA JHS	393	304	89	45
11.	NAKOM JHS	237	136	101	51
12.	ZUABULIGA	142	0	142	71
	TOTAL	3,195	1,716	1,479	744

The information on the education shows that infrastructure and school furniture are woefully inadequate looking at the enrollment rate of the schools right from the Kindergarten to Junior High levels. The 2014 -2017 Medium Term Department would address these challenges. The department undertook a number of activities during the year under review.

- ❖ Implemented DEOC decisions to improve educational standard
- ❖ Undertook monitoring and supervision
- ❖ Capacity building of staff

Challenges

- ❖ Lack of logistics
- ❖ Office and residential accommodation problem

GHANA SCHOOL FEEDING PROGRAMME

The Ghana School Feeding Programme operates in the District. As a result, school pupils have a hot meal a day and it has increased enrolment and retention. Also nutritional status of children has improved. The table below shows the list of beneficiary schools in the District.

**GHANA SCHOOL FEEDING PROGRAMME BENEFICIARIES SCHOOLS ENROLLMENT
2012/2013 ACADEMIC YEAR**

NUMBER	NAME OF SCHOOL	NO. OF PUPILS
1.	Adabia Primary School	417
2.	Kunjam Primary School	428
3.	Sugudi Primary School	445
4.	Widana Primary School	1,103
5.	Deega Primary School	906
6.	Hidayatul Primary School	567
7.	Kogadim Primary School	527
8.	Yariga Primary School	407
9.	Daware Primary School	903
10.	Bimpiela Primary School	657
11.	Belintanga Primary School	339
12.	Nakom Primary School	1,021
13.	Sarabogo Primary School	465
14.	Zuabuliga Primary School	596
15.	Nakambo Primary School	638
16.	Ninkogo Primary School	1,219
17.	TindanNatinga Primary School	401
18.	Koose Primary School	522
19.	Tainchungu Primary School	302
20.	Kultamise Primary School	492
21.	Tes-Natinga Primary School	751
22.	Pialoko Primary School	449
23.	Gbewaa Primary School	915
24.	Bengula Primary School	645
25.	Pusiga Practice 1 Primary School	720

26.	Pusiga Practice 2 Primary School	556
27.	Kulungungu Primary School	1,027
28.	Gambudugu Primary School	445
29.	Latega Primary School	328
30.	Bulugu Primary School	500
31.	Kolpielogo Primary School	312
	GRAND TOTAL	19,003

Source: Pusiga District Assembly

The total number of school pupils fed under Ghana School Feeding programme was **19,003** as at 2012/2013 academic year.

PAYMENT OF LIVELIHOOD EMPOWERMENT AGAINST POVERTY (LEAP)

Some vulnerable Households have been benefiting from LEAP Programme. The department of Social Welfare has been able to identify and registered about One Thousand One Hundred and Eighteen (1152) beneficiary households under the emergency LEAP in the district as at December 2011. In the year 2012, the following payments were made to the registered Households under the LEAP programme.

PAYMENT TO THE BENEFICIARY HOUSEHOLDS (HHs) OF LIVELIHOOD EMPOWERMENT AGAINST POVERTY (LEAP) FOR 2012						
COMMUNITY	HOUSEHOLDS APPROVED FOR PAYMENT		HOUSEHOLDS PRESENT FOR PAYMENT		HOUSEHOLDS ABSENT (NOT PAID)	
	# OF HHs	AMOUNT GH	# OF HHs	AMOUNT GH	# OF HHs	AMOUNT GH
PUSIGA-NATINGA - JULY 2013	31	1,752.00	31	1,752.00	0	0
MANDAGO JULY 2013	25	1,404.00	25	1,404.00	0	0
BITTUO - JULY 2013	25	1,500.00	25	1,500.00	0	0
BULUGU - JULY 2013	26	1,554.00	26	1,554.00	0	0
TERANGO - JULY 2013	23	1,464.00	23	1,464.00	0	0
TOTAL		440,800.00		426,896.00		13,904.00
DEPARTMENT OF SOCIAL WELFARE						

PAYMENT TO THE BENEFICIARY HOUSEHOLDS (HHs) OF LIVELIHOOD EMPOWERMENT AGAINST POVERTY (LEAP) FOR 2012						
COMMUNITY	HOUSEHOLDS APPROVED FOR PAYMENT		HOUSEHOLDS PRESENT FOR PAYMENT		HOUSEHOLDS ABSENT (NOT PAID)	
	# OF HHs	AMOUNT GH	# OF HHs	AMOUNT GH	# OF HHs	AMOUNT GH
PUSIGA-NATINGA - JULY 2013	31	1,752.00	31	1,752.00	0	0
MANDAGO JULY 2013	25	1,404.00	25	1,404.00	0	0
BITTUO - JULY 2013	25	1,500.00	25	1,500.00	0	0
BULUGU - JULY 2013	26	1,554.00	26	1,554.00	0	0
TERANGO - JULY 2013	23	1,464.00	23	1,464.00	0	0
NINKOGO - JULY 2013	35	1,908.00	35	41,908.00		0
DEPARTMENT OF SOCIAL WELFARE						

REGISTER OF PERSONS WITH DISABILITY

S/ N	NAME	AGE	SEX	DISABILITY	COMMUNITY
1	KARIM ALALE	15	M	PHYSICALLY CHALLENGED	SUADE
2	MEMUNA ASOFO	80	F	PHYSICALLY CHALLENGED	ZONGO
3	SHEITU SOFO	80	F	PHYSICALLY CHALLENGED	ZONGO
4	ZENABU SOFO	75	F	PHYSICALLY CHALLENGED	ZONGO
5	AZUUGA MAMAUDU	60	M	PHYSICALLY CHALLENGED	MERI-NATINGA
6	YAKUBU HAWA	30	F	PHYSICALLY CHALLENGED	SUADE
7	ZENABU ALI	35	F	PHYSICALLY CHALLENGED	GANI
8	KARIM AYAAB	47	M	PHYSICALLY CHALLENGED	MERI-NATINGA
9	DUBURI LAADI	74	F	PHYSICALLY CHALLENGED	SUADE
10	MUSAH ABDULAI	65	M	PHYSICALLY CHALLENGED	BITTUO
11	ISSAKA NASIRU	11	M	PHYSICALLY CHALLENGED	SUADE
12	AWUDU AYUBA	40	M	PHYSICALLY CHALLENGED	NATINGA
13	AZEED DAUDA	90	M	PHYSICALLY CHALLENGED	SUADE
14	ABDULAI AZEED	60	F	PHYSICALLY CHALLENGED	SUADE
15	NASIRU ANABU	25	M	PHYSICALLY CHALLENGED	D' LINE ZONGO
16	ISSAKA PASIRA	27	M	PHYSICALLY CHALLENGED	KULTAMISE
17	YAKUBU YAHAYA	10	M	PHYSICALLY CHALLENGED	SUGUDI
18	MMABUN ABUGRI	50	F	PHYSICALLY CHALLENGED	PIALOKO
19	ALEMBIL ATIIG	55	M	PHYSICALLY CHALLENGED	TAMBIOGO
20	PAUL AKOLOGO	55	M	PHYSICALLY CHALLENGED	DABILIGO-NATINGA

21	AGBEED ABANG	70	M	PHYSICALLY CHALLENGED	PIALOKO
22	ATAWIN AYAM	54	M	PHYSICALLY CHALLENGED	PIALOKO
23	JOHN TINGMIED	37	M	PHYSICALLY CHALLENGED	WIDANA
24	ISSIFU SAFIA	18	F	PHYSICALLY CHALLENGED	SARABOGO
25	ATIIGA AYAMBILA	70	F	PHYSICALLY CHALLENGED	SUGUDI
26	LAMIRU MOHAMMED	4	M	PHYSICALLY CHALLENGED	
27	AZUNGA KARITA	80	F	PHYSICALLY CHALLENGED	YARIGA
28	AKAMAH AKUDUGU	83	M	PHYSICALLY CHALLENGED	PIALOKO
29	MAJEED MOHAMMED	10	M	PHYSICALLY CHALLENGED	DUAKUOM
30	ABUGRI AKAWIM	25	M	PHYSICALLY CHALLENGED	SUGUDI
31	AMINA MAMADU	18	F	PHYSICALLY CHALLENGED	NINKOGO
32	HAMZA IRRISAH	14	M	PHYSICALLY CHALLENGED	YARIGA
33	MUKAILA MAHAMUDU	25	M	PHYSICALLY CHALLENGED	DEEGA
34	SIDUBUR ABDULAI J.	20	M	PHYSICALLY CHALLENGED	DEEGA
35	SUGUNI MUMUNI	19	M	PHYSICALLY CHALLENGED	YARIGA
36	IBRAHIM TAHIRU	15	M	PHYSICALLY CHALLENGED	SUGUDI
37	MOHAMMED SEIDU ZUNOGO	30	M	PHYSICALLY CHALLENGED	DEEGA
38	BUKARI AZURE	89	M	PHYSICALLY CHALLENGED	SUGUDI
39	LAMIS IDDRISU	20	F	PHYSICALLY CHALLENGED	SUGUDI
40	ABUGBILA JOHN	28	M	PHYSICALLY CHALLENGED	NAKOM
41	ANIEB SALIFU	42	M	PYSICALLY CHALLENGED	PUSIGA
42	HAMIDU ISSAH	35	M	PHYSICALLY	YARIGA

				CHALLENGED	
43	SUMAAILA MARIA	79	F	PHYSICALLY CHALLENGED	BELIMTINGA
44	AWIN ALAADI	50	F	PHYSICALLY CHALLENGED	PIALOKO
45	DAVID AGOSUM	54	M	PHYSICALLY CHALLENGED	SUGUDI
46	KAWIM ISSAKA	30	M	PHYSICALLY CHALLENGED	PIALOKO
47	ANANE AKOLOG	75	M	PHYSICALLY CHALLENGED	SUGUDI
48	DAHAMANI YANABA	68	M	PHYSICALLY CHALLENGED	PUSIGA
49	JOHN AWIMBE	40	M	PHYSICALLY CHALLENGED	NINKOGO
50	BUNOGO WAZURE	85	F	PHYSICALLY CHALLENGED	YARIGA
51	BOROBEN ISSAH	80	M	PHYSICALLY CHALLENGED	YARIGA
52	SANGUGO ISSAKA	65	M	PHYSICALLY CHALLENGED	YARIGA
53	AWINANA ANABAH	85	M	PHYSICALLY CHALLENGED	YARIGA
54	LEBINDE EMMANUEL	42	M	PHYSICALLY CHALLENGED	PUSIGA
55	ABAASI MUSAH	35	M	PHYSICALLY CHALLENGED	ACROSS
56	AMA SAMUEL	45	F	PHYSICALLY CHALLENGED	SUGUDI
57	AGULI IDDRISU	27	M	PHYSICALLY CHALLENGED	SUGUDI
58	AWINGUUD AYAMBA	70	M	PHYSICALLY CHALLENGED	PIALOKO
59	ALEBIN NDAAGO	27	M	PHYSICALLY CHALLENGED	SUGUDI
60	AWINIBA AWINI	95	F	PHYSICALLY CHALLENGED	PIALOKO
61	MAHAMADU ABUGRI	65	M	PHYSICALLY CHALLENGED	PUSIGA
62	ATIIBUGRI ATENI	41	F	PHYSICALLY CHALLENGED	SARABOGO
63	ABUGRI MOSES	40	M	PHYSICALLY CHALLENGED	SARABOGO

64	ASSANA AKOTIM	45	F	PHYSICALLY CHALLENGED	SARABOGO
65	ABUGRI ATISAH	40	F	PHYSICALLY CHALLENGED	SARABOGO
66	HAWA SEIDU	65	F	PHYSICALLY CHALLENGED	PUSIGA
67	HAWA YAKUBU	57	F	PHYSICALLY CHALLENGED	PUSIGA
68	HALIMA ALHASSAN	45	F	PHYSICALLY CHALLENGED	PUSIGA
69	HARUNA SURAJU	19	M	PHYSICALLY CHALLENGED	NINKOGO
70	ATIIBGRI ALEBILS	25	M	PHYSICALLY CHALLENGED	SARABOGO
71	TALATA AGERIMA	22	F	PHYSICALLY CHALLENGED	BUYANTINGA
72	MARIAMA ABANGA	53	F	PHYSICALLY CHALLENGED	LATEGA
73	ASSIBI SAANABA	75	M	PHYSICALLY CHALLENGED	TAMBIOGO
74	LYDIA ALENGA	24	F	PHYSICALLY CHALLENGED	SUGUDI
75	AMERIYAM APANA	65	F	PHYSICALLY CHALLENGED	GRUSIYIN
76	IMORO ABDUL-RAZAK	51	M	PHYSICALLY CHALLENGED	MANDAGO
77	YAMDOGO SULEMA	65	M	PHYSICALLY CHALLENGED	MANDAGO
78	AKUKA BUKARI	72	M	PHYSICALLY CHALLENGED	MANDAGO
79	SULEMANI HAWA	67	M	PHYSICALLY CHALLENGED	MANDAGO
80	ATINGA AKAAMA	48	M	PHYSICALLY CHALLENGED	MANDAGO
81	MUSAH HUNSULU	72	F	PHYSICALLY CHALLENGED	MANDAGO
82	MAMMAH TATA	42	M	PHYSICALLY CHALLENGED	KULUNGUNGU
83	FUUWAL ABDULAI	11	M	PHYSICALLY CHALLENGED	KULUNGUNGU
84	MORO ZINTANI	61	M	PHYSICALLY CHALLENGED	KULUNGUNGU
85	HAMADU ZEEYA	68	M	PHYSICALLY	KULUNGUNGU

				CHALLENGED	
86	SIBIDO TALABRU	53	F	PHYSICALLY CHALLENGED	KULUNGUNGU
87	MARIAMA YINTBRU	48	F	PHYSICALLY CHALLENGED	KULUNGUNGU
88	AMINATU ABUKARI	68	F	PHYSICALLY CHALLENGED	KULUNGUNGU
89	MAMADU AKPALUG	82	M	PHYSICALLY CHALLENGED	PUSIGA
90	ABDULAI AYUNE	70	M	PHYSICALLY CHALLENGED	SARABOGO
91	ABUGNAAB AWIIG	77	M	PHYSICALLY CHALLENGED	PUSIGA
92	ABUGBILA JOHN	28	M	PHYSICALLY CHALLENGED	PUSIGA
93	YAKUBU MUSAH	38	M	PHYSICALLY CHALLENGED	PUSIGA
94	ABANZUUG AYARI	35	F	PHYSICALLY CHALLENGED	PUSIGA
95	ABURAGO SALIFU FATAU	18	M	PHYSICALLY CHALLENGED	WIDANA
96	AZURE ABARE	74	M	PHYSICALLY CHALLENGED	SARABOGO
97	AWINI MUSAH	20	M	PHYSICALLY CHALLENGED	SARABOGO
98	KAMAA KADIJA	23	F	PHYSICALLY CHALLENGED	MANDAGO
99	ABARIG ZENABU	24	F	PHYSICALLY CHALLENGED	PUSIGA
100	AKUDBILA ANAABAH	16	M	PHYSICALLY CHALLENGED	PUSIGA
101	ISSAH ALIZETA	34	F	PHYSICALLY CHALLENGED	PUSIGA
102	MUSAH ASEETA	29	F	PHYSICALLY CHALLENGED	MANDAGO
103	MAKIKI FATI	30	F	PHYSICALLY CHALLENGED	SANGA
104	AKUDUGU HAWA	35	F	PHYSICALLY CHALLENGED	WIDANA
105	BASHERU FARUK	14	M	PHYSICALLY CHALLENGED	PUSIGA
106	KARIM SALAMATU	33	F	PHYSICALLY CHALLENGED	PUSIGA

107	AMINU ABASS	8	M	PHYSICALLY CHALLENGED	PUSIGA
108	BRABUN IBRHIM	13	M	PHYSICALLY CHALLENGED	PUSIGA
109	ABARIKE AKOKOMZAM	52	F	PHYSICALLY CHALLENGED	DABIA
110	MEMUNA AMADU	10	F	PHYSICALLY CHALLENGED	DABIA
111	MAMUDU AGBAND	39	M	PHYSICALLY CHALLENGED	DABIA
112	FATI SEIDU	42	F	PHYSICALLY CHALLENGED	DABIA
113	MORIYAMAH ALAAM	38	F	PHYSICALLY CHALLENGED	DABIA
114	ISSAKA BUKARI	10	M	PHYSICALLY CHALLENGED	DABIA
115	MALIKI AZUMAH	47	M	PHYSICALLY CHALLENGED	SANGA
116	YAKUBU ALUDII	70	M	VISUALLY IMPAIRED	MERI-NATINGA
117	ABUBILL AKAMALUD	90	F	VISUALLY IMPAIRED	SUADE
118	HAWA SOFO	80	F	VISUALLY IMPAIRED	ZONGO
119	MUSAH AGUWINI	80	M	VISUALLY IMPAIRED	D' LINE-NATINGA
120	HARUNA ABANGA	90	M	VISUALLY IMPAIRED	NATINGA
121	SEIDU HABIBA	90	F	VISUALLY IMPAIRED	MERI-NATINGA
122	AMDI MUTAGRI	70	M	VISUALLY IMPAIRED	ZONGO
123	MOGTARE MOHAMADI	62	M	VISUALLY IMPAIRED	ZONGO
124	ACHEMAH ASAMIG	45	F	VISUALLY IMPAIRED	PIALOKO
125	MBILL ALUDAGO	75	F	VISUALLY IMPAIRED	ACROSS
126	AYAAB NASBUN	90	M	VISUALLY IMPAIRED	SUGUDI
127	ALALDAG NAMOANAB	42	M	VISUALLY IMPAIRED	PUSIGA
128	RAMANI AZARA	70	F	VISUALLY IMPAIRED	BELINTANGA

129	ABUBAKAR ALIMA	40	F	VISUALLY IMPAIRED	BELINTANGA
130	ISSAKA WAZURI	70	F	VISUALLY IMPAIRED	BELINTANGA
131	IDDRISU HAMADU	60	M	VISUALLY IMPAIRED	BELINTANGA
132	TAMBILA LIMATA	60	F	VISUALLY IMPAIRED	BELINTANGA
133	BRAIMAH SALAM	70	M	VISUALLY IMPAIRED	WIDANA
134	DIBORAH AZOOD ADABOGO	60	F	VISUALLY IMPAIRED	SUGUDI
135	SEIDU HAMIDU	28	M	VISUALLY IMPAIRED	DEEGA
136	FATI ASAKE	63	F	VISUALLY IMPAIRED	BUYANATINGA
137	ABUGRE MABAA	50	M	VISUALLY IMPAIRED	YARIGA
138	PETER SEIDU	25	M	VISUALLY IMPAIRED	WIDANA
139	LEBINDE ZAMAH	40	M	VISUALLY IMPAIRED	PUSIGA
140	ALIJETA ISSIFU	76	F	VISUALLY IMPAIRED	SUGUDI
141	YARISA YANABA	63	M	VISUALLY IMPAIRED	PUSIGA
142	KARIM AWUMBULA	57	M	VISUALLY IMPAIRED	PUSIGA
143	SALAM SHEITU	63	F	VISUALLY IMPAIRED	KULTAMISE
144	MAJEED ABDULAI	43	M	VISUALLY IMPAIRED	PUSIGA
145	HAMADU ABUTEAS	55	M	VISUALLY IMPAIRED	NINKOGO
136	AKUDUGU AZUUG	65	F	VISUALLY IMPAIRED	NINKOGO
147	ZENABU AZEEDA DANIEL	67	M	VISUALLY IMPAIRED	MANDAGO
148	FONAATAN ABARIKI	73	F	VISUALLY IMPAIRED	KULUNGUNGU
149	APIER ATEMBO	80	F	VISUALLY IMPAIRED	NINKOGO

150	AYAABA ABUGRI	76	M	VISUALLY IMPAIRED	NINKOGO
151	AKOLOGO LAMISI	63	F	VISUALLY IMPAIRED	SARABOGO
152	AYAAB ASAAN	81	M	VISUALLY IMPAIRED	PUSIGA
153	SEIDU SAHARA	30	F	VISUALLY IMPAIRED	PUSIGA
154	AYARO NBIL	43	F	VISUALLY IMPAIRED	DABIA
155	NMALEBNA AZURE	49	F	VISUALLY IMPAIRED	DABIA
156	KAYIIBA KAMBIL	49	F	VISUALLY IMPAIRED	DABIA
157	ALHASSAN BASUN	46	M	VISUALLY IMPAIRED	DABIA
158	ATENSONG AWINI	52	M	VISUALLY IMPAIRED	DABIA
159	AYOREBUN ABUOWIN	45	F	VISUALLY IMPAIRED	DABIA
160	MOHAMMED SAFURA ASSIBI	27	F	VISUALLY IMPAIRED	SUGUDI
161	INUSAH ELIASU	10	M	HEARING IMPAIRED	SUADE
162	OSMAN HAKIM	15	M	HEARING IMPAIRED	DUA-NATINGA
163	FUSEINI SUODA	20	M	HEARING IMPAIRED	YARIGA
164	J.B. ABRAHAM	14	M	HEARING IMPAIRED	SUGUDI
165	HARUNA ANTU	10	F	HEARING IMPAIRED	SUGUDI
166	SIDIKI INUSAH	17	M	HEARING IMPAIRED	SUGUDI
167	AGAMBEDU ALALE	77	M	HAERING IMPAIRED	YARI-NATINGA
168	OSMANI JAMILU	9	M	HEARING IMPAIRED	SANGA WIDANA
169	ELIASU MUJAI DEN ADKUDUGU	8	M	HEARING IMPAIRED	MANDAGO
170	SALIFU ADAZI	17	M	HEARING IMPAIRED	BULUGU/MISSIGA
171	SEIDU MUNIRU	14	M	HEARING IMPAIRED	DEEGA

172	YAKUBU APULARIK ASIG	14	M	HEARING IMPAIRED	SUGUDI
173	NASIRU DAMATA	18	F	HEARING IMPAIRED	KULTAMISE
174	ABDUL KARIM ESTHER	12	F	HEARING IMPAIRED	DEEGA-NATINGA
175	JOSHUA ALHASSAN	20	M	HEARING IMPAIRED	NINKOGO
176	ROMANI RASHID	20	M	HEARING IMPAIRED	WIDANA
177	HELEN AWIMBENETI ABUGRI	5	F	HEARING IMPAIRED	SUGUDI
178	SABINA ISSAKA	12	F	HEARING IMPAIRED	DEEGA
179	AZURE ATIIGA	45	F	HEARING IMPAIRED	PIALOKO
180	ALAYA APOANABA	30	F	HEARING IMPAIRED	ZUABULIGA
181	ABILIM ASULIM	52	F	HEARING IMPAIRED	PUSIGA
182	AYUGIB ATENI	24	F	HEARING IMPAIRED	PUSIGA
183	SALIFU T. MARIAMA	60	F	HEARING IMPAIRED	BELINTANGA
184	IDDRISU SHEITU	70	F	HEARING IMPAIRED	BELINTANGA
185	SAKINA MUSTAPHA	24	F	HEARING IMPAIRED	WIDANA
186	ATIBILA ATAMPUUR	54	F	HEARING IMPAIRED	SUGUDI
187	ASUGURU ATIBILA	31	M	HEARING IMPAIRED	LAISAA
188	AZURE AYAMBILA	68	M	HEARING IMPAIRED	SUGUDI
189	ATIIGA HAMADU	37	M	HEARING IMPAIRED	TINSONGO
190	APII WIMBILLA	68	M	HEARING IMPAIRED	MANDAGO
191	BOBATON DUUBRU	68	F	HEARING IMPAIRED	KULUNGUNGU
192	ADAMA WASILA	12	F	HEARING IMPAIRED	KULUNGUNGU

193	HABIBA AWUDU	33	F	HEARING IMPAIRED	KULUNGUNGU
194	ABDUL RAZAK DAUDA	12	M	HEARING IMPAIRED	KULUNGUNGU
195	EVELYN MUSAH	28	F	HEARING IMPAIRED	PUSIGA
196	RUKAYA ALIDU	22	F	HEARING IMPAIRED	PUSIGA
197	ABARIKE ABAKO	22	M	HEARING IMPAIRED	TERAGO
198	AWUNI ABDUL-RASHID	46	M	HEARING IMPAIRED	MANDAGO
199	AKOLOGO LAMISI	63	F	HEARING IMPAIRED	SARABOGO
200	IDDRISU ABDUL- AZIZ	30	M	HEARING IMPAIRED	GAREKE
201	SALIFU DANTANI	42	M	HEARING IMPAIRED	MANDAGO
202	ABUGRI FUSEINI	32	M	HEARING IMPAIRED	DEEGA
203	ALIMA HALIDU	45	F	HEARING IMPAIRED	PUSIGA
204	ALEM AKUKA	57	M	HEARING IMPAIRED	SUGUDI
205	MEMUNA HALIDU	24	F	HEARING IMPAIRED	PUSIGA
206	KADIRI INUSAH	18	M	HEARING IMPAIRED	KULTAMISE
207	MUGTARU RACHIA	17	F	HEARING IMPAIRED	GAREKE
208	DAVID AYAMBILLA AYARIGA	35	M	HEARING IMPAIRED	NAKOM
209	ADAMU AKAYOUR	17	M	HEARING IMPAIRED	PUSIGA
210	SOFO LATIFA	20	F	HEARING IMPAIRED	TERAGO
211	DAMANI FATIMA	28	F	HEARING IMPAIRED	GAREKE
212	ISSIFU BINTA	32	F	HEARING IMPAIRED	TERAGO
213	KEENI AKUKA	16	M	HEARING IMPAIRED	POLNABAH
214	PUOKO YAMDOGO	16	F	HEARING IMPAIRED	KOLNABAH

215	LAADI ABUGREI	24	F	HEARING IMPAIRED	PIALOKO
216	SAMSIYA IMORO	36	F	HEARING IMPAIRED	PUSIGA
217	ASETA SIDIKI	44	F	HEARING IMPAIRED	SIGNOGO
218	RUTH DAVIDE	24	F	HEARING IMPAIRED	NAKOM
219	IBRHIM TAPSIRA	24	F	HEARING IMPAIRED	NAKOM
220	HABIBA MUSAH	55	F	HEARING IMPAIRED	PUSIGA
221	ISSAKA KARIM	32	M	HEARING IMPAIRED	DABIA
222	ADAM HAMIDU	12	M	HEARING IMPAIRED	DABIA
223	ISSIFU MEMUNA	16	F	HEARING IMPAIRED	DABIA
224	BASHIRU RASHIDA	12	F	HEARING IMPAIRED	DABIA
225	AYAMBILA ALAA	51	M	HEARING IMPAIRED	DABIA
226	MUSTAPHA RUKAYA	16	F	HEARING IMPAIRED	DABIA
227	SUMAILA HABIBA	15	F	HEARING IMPAIRED	YARIGA
228	ZALHATU MUSAH	18	M	HEARING IMPAIRED	GAREKE
229	HAMIDU ISSAH	35	M	MENTALLY CHALLENGED	YARIGA
230	SANGUGO ISSAKA	80	M	MENTALLY CHALLENGED	YARIGA
231	ASANA PASUDA	23	F	MENTALLY CHALLENGED	KULUNGUNGU
232	RASHID ZAKARI	12	M	MENTALLY CHALLENGED	KULUNGUNGU

CHAPTER SEVEN

Transparency and Accountable Governance

Introduction

The District Assembly has a total membership of 23, of which 15 were elected and 6 appointed. The Assembly is made up of 15 Electoral Areas 4 Area Councils and 50 Unit Committees.

The General Assembly held three (3) ordinary meetings and deliberated on issues affecting the District. All the five (5) Area Councils were operational and assisted in the planning, implementation and monitoring of Assembly programmes and projects.

Projects/Activities that were started in 2012 were completed in 2013 and handed over to the beneficiary communities.

Recruitment Undertaken

Authority was granted for the recruitment of eight (8) staff by the Ministries of Finance and Local Government. The District Assembly had since formalized their engagement and they have started drawing salaries from their respective banks.

Administrative and Managerial Changes

Postings/Changes at Management Level

During the period under review, the following officers were posted in to the District:

Mr. Samuel Boating (Assistant Budget Analyst)

Mr. Richard Kabutey (Assistant Director IIB Officer)

Mr. Kamblige Fulbet (Assistant Director IIB Officer)

Mr. Abdul Ganiw Hussein (Assistant Development Planning Officer)

Mr. Emmanuel Akumbisa Essel (Assistant Engineer)

Mr. Christus Akangare Amoah

Mr. Adam Habib was posted out of the District to the Local Government Secretariat.

Security

National indicator

Number of reported cases of abuse (Children, Women and Men)

The District experience has no witnessed any child abuse since it was inaugurated, August 2012.

Police Citizen Ratio

The police citizen ratio in the District was 1:5500 in 2012 and it was brought down to 1:5200 in 2013 and to 1:5100 in 2013. The reason for the performance in 2013 is due to more police personnel being posted to the District.

Ghana Fire Service

Bawku Municipal Ghana Fire Service oversees Pusiga District as the District has no fire service station.

Conflict Resolution Strategies and Progress Made

The District continued to be peaceful during the year under review. The District Security Committee assisted in resolving cases of conflict brought to it for settlement. It also met several times to review the security situation in the District.

Police personnel carry out their duties effectively in the district in order to prevent crime.

The following cases brought to DISEC were discussed and resolved.

- Fuel smuggling

The traditional system of dispute resolution was encouraged among the traditional authorities in resolving disputes among community members.

Tourism

Percentage increase in Tourism arrivals

The District has not got the capacity to track tourist arrivals.

Conclusion

The District is a baby district barely two years old. Some of the information was collected from the mother Municipal and others were not in existence. As the District was preparing its 2014-2017 Medium Term Development it was an opportunity to collect both qualitative and quantitative data to inform policy decision making, planning a comprehensive and reliable data for reporting. We thank all those who provide data and offer their contributions for the development of the District.