

SECTION THREE

SUMMARY TABLES, MAPS AND CHARTS

PART 3.1

SUMMARY TABLES, MAPS AND CHARTS FOR PRESCHOOLS

3. SUMMARY TABLES, CHARTS AND MAPS

3.1 SUMMARY TABLES, CHARTS AND MAPS FOR PRESCHOOLS

Table 3.1.1 Number of preschools* by type of education and region, 2003/2004

REGION	NUMBER OF PRESCHOOLS*		
	Public	Private	Total
Ashanti	1,131	718	1,849
Brong Ahafo	801	257	1,058
Central	795	378	1,173
Eastern	959	429	1,388
Greater Accra	176	560	736
Northern	466	77	543
Upper East	166	46	212
Upper West	103	45	148
Volta	632	367	999
Western	934	294	1,228
Total	6,163	3,171	9,334

* This includes kindergarten.

MAP 3.1.1a: NUMBER OF PUBLIC PRESCHOOLS BY REGION, 2003/2004

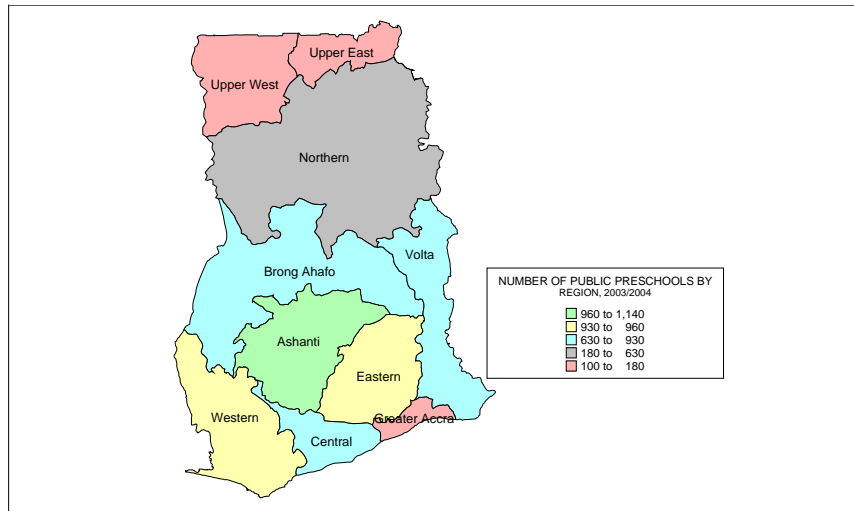
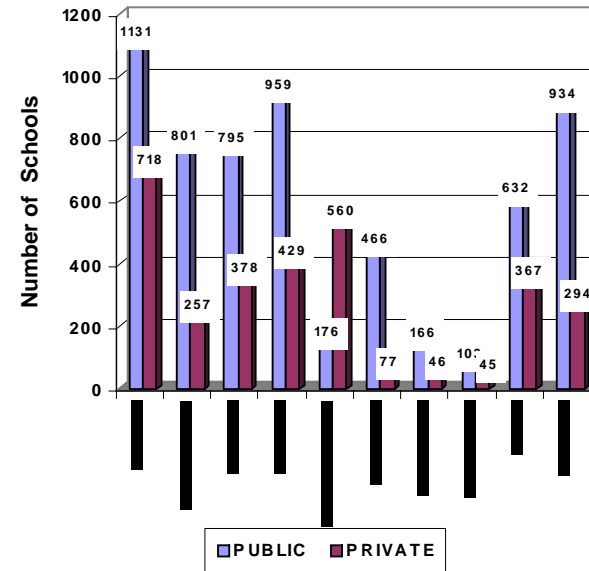


Chart 3.1.1 NUMBER OF PRESCHOOLS BY TYPE OF EDUCATION AND REGION 2003/2004



MAP 3.1.1b: NUMBER OF PRIVATE PRESCHOOLS BY REGION, 2003/2004

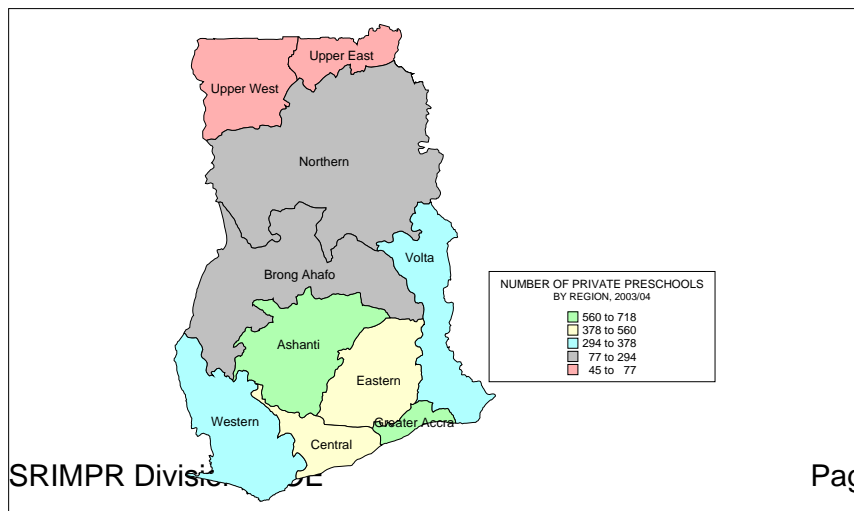


Table 3.1.2 Number of kindergarten by type of education and region, 2003/2004

REGION	NUMBER OF KINDERGARTEN		
	Public	Private	Total
Ashanti	1,054	266	1,320
Brong Ahafo	735	125	860
Central	619	152	771
Eastern	842	203	1,045
Greater Accra	106	131	237
Northern	207	9	216
Upper East	43	6	49
Upper West	44	17	61
Volta	554	206	760
Western	738	125	863
Total	4,942	1,240	6,182

MAP 3.1.2a: NUMBER OF PUBLIC KINDERGARTEN BY REGION, 2003/2004

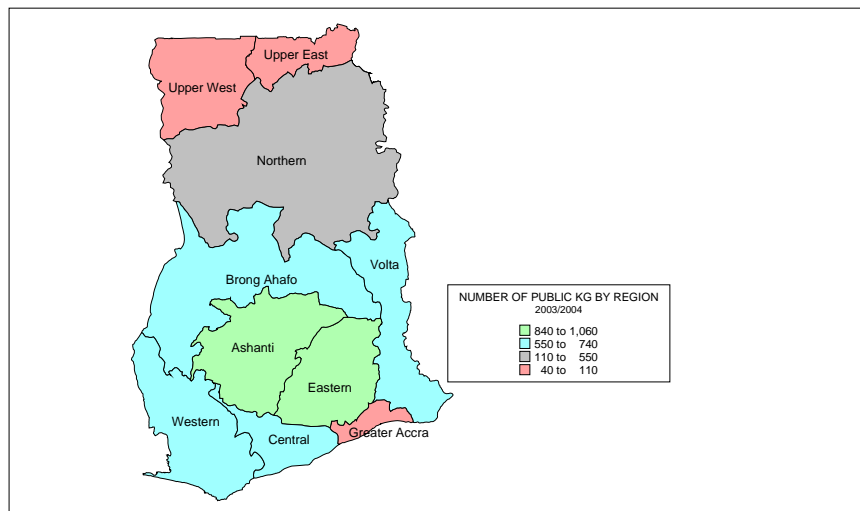
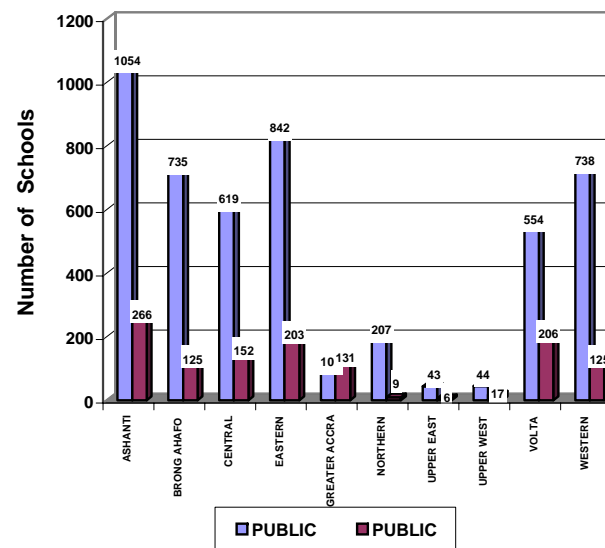


Chart 3.1.2 NUMBER OF KINDERGARTEN BY TYPE OF EDUCATION AND REGION 2003/2004



MAP 3.1.2b: NUMBER OF PRIVATE KINDERGARTEN BY REGION, 2003/2004

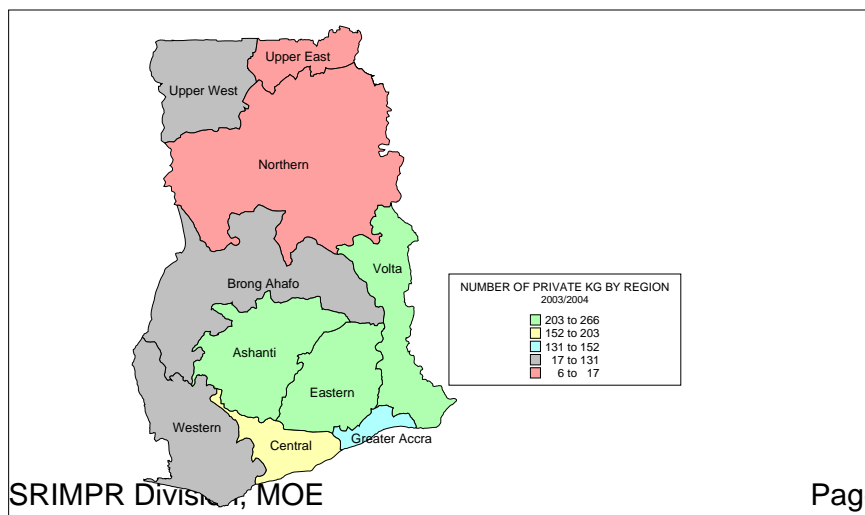


Table 3.1.3 Enrolment in preschools* by type of education, region and sex, 2003/2004

REGION	ENROLMENT IN PRESCHOOLS*								
	PUBLIC			PRIVATE			TOTAL		
	Boys	Girls	Total	Boys	Girls	Total	Boys	Girls	Total
Ashanti	43,856	42,642	86,498	37,961	36,356	74,317	81,817	78,998	160,815
Brong Ahafo	36,065	35,460	71,525	13,225	13,134	26,359	49,290	48,594	97,884
Central	28,655	28,873	57,528	16,012	15,813	31,825	44,667	44,686	89,353
Eastern	34,418	33,969	68,387	18,664	17,993	36,657	53,082	51,962	105,044
Greater Accra	8,994	8,896	17,890	28,020	27,291	55,311	37,014	36,187	73,201
Northern	29,472	27,371	56,843	4,826	4,670	9,496	34,298	32,041	66,339
Upper East	11,573	11,833	23,406	2,894	2,962	5,856	14,467	14,795	29,262
Upper West	6,318	6,386	12,704	2,315	2,304	4,619	8,633	8,690	17,323
Volta	23,061	22,562	45,623	13,174	12,800	25,974	36,235	35,362	71,597
Western	39,607	39,946	79,553	13,919	13,382	27,301	53,526	53,328	106,854
Total	262,019	257,938	519,957	151,010	146,705	297,715	413,029	404,643	817,672

* This includes kindergarten.

MAP 3.1.3a: ENROLMENT IN PUBLIC PRESCHOOLS BY REGION, 2003/2004

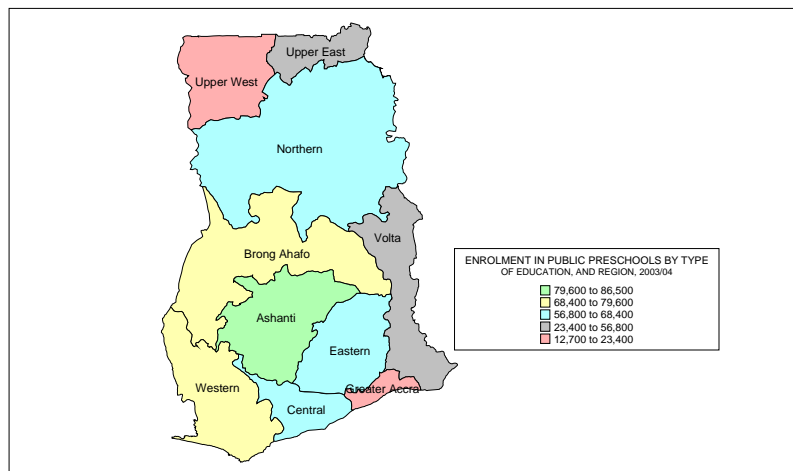
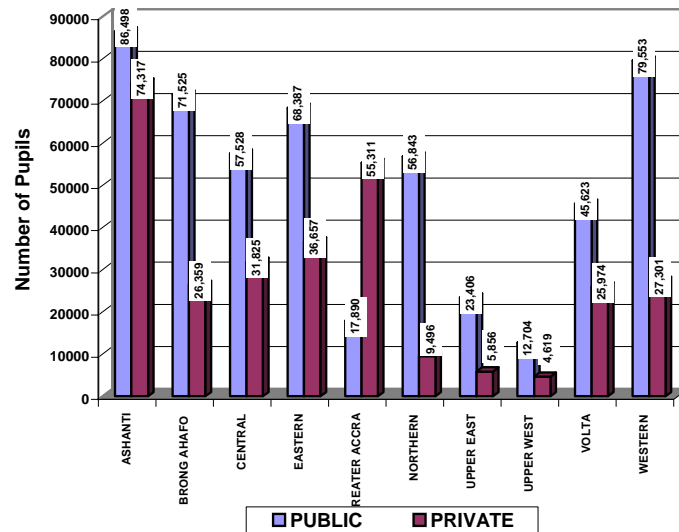


Chart 3.1.3 PRESCHOOLS ENROLMENT BY TYPE OF EDUCATION AND REGION 2003/2004



MAP 3.1.3b: ENROLMENT IN PRIVATE PRESCHOOLS BY REGION, 2003/2004

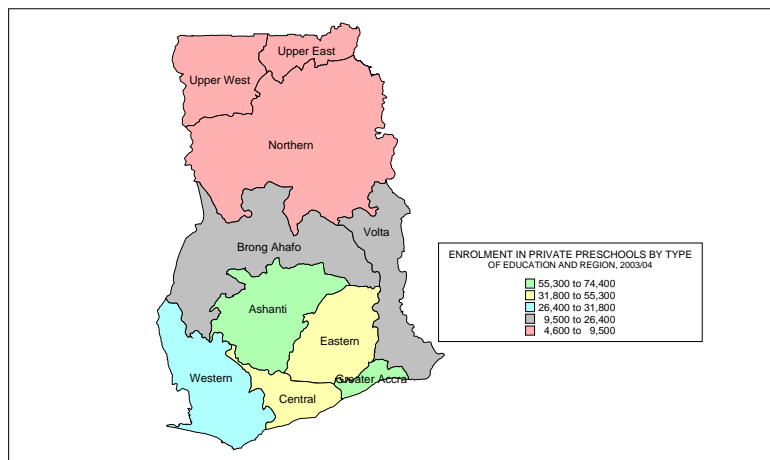
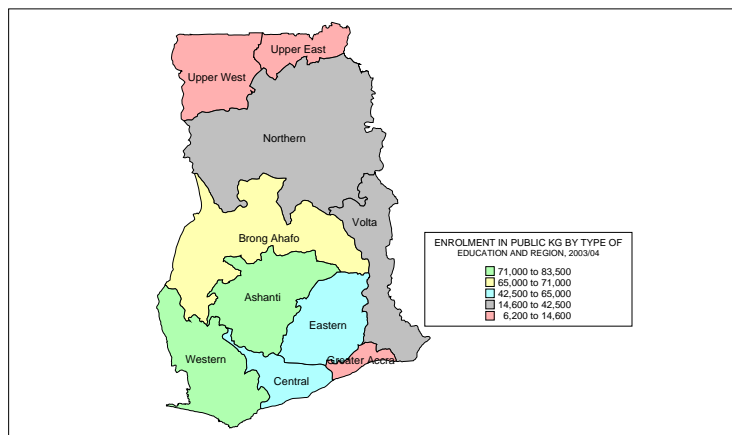


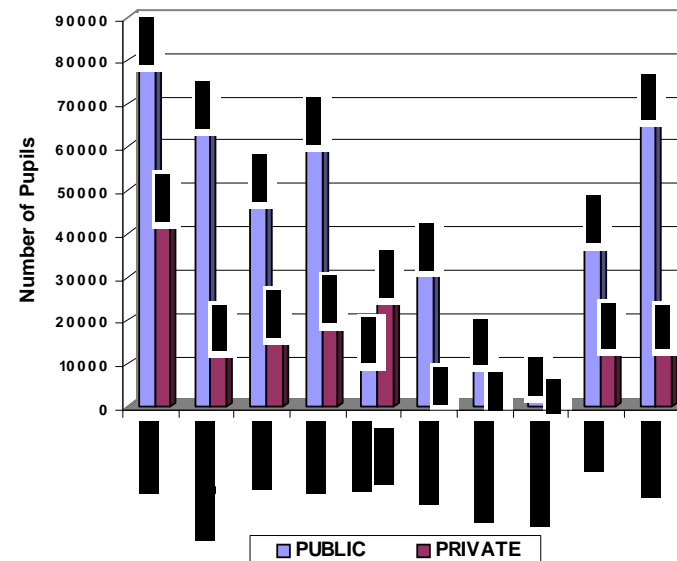
Table 3.1.4 Enrolment in kindergarten by type of education, region and sex, 2003/2004

REGION	ENROLMENT IN KINDERGARTEN								
	PUBLIC			PRIVATE			TOTAL		
	Boys	Girls	Total	Boys	Girls	Total	Boys	Girls	Total
Ashanti	42,266	41,138	83,404	24,189	23,086	47,275	66,455	64,224	130,679
Brong Ahafo	34,641	34,127	68,768	8,732	8,720	17,452	43,373	42,847	86,220
Central	25,917	26,119	52,036	10,242	10,255	20,497	36,159	36,374	72,533
Eastern	32,671	32,299	64,970	12,197	11,895	24,092	44,868	44,194	89,062
Greater Accra	7,310	7,283	14,593	15,005	14,665	29,670	22,315	21,948	44,263
Northern	18,452	17,504	35,956	2,083	2,005	4,088	20,535	19,509	40,044
Upper East	6,929	7,170	14,099	1,491	1,488	2,979	8,420	8,658	17,078
Upper West	3,138	3,085	6,223	924	957	1,881	4,062	4,042	8,104
Volta	21,396	21,096	42,492	9,090	8,817	17,907	30,486	29,913	60,399
Western	35,233	35,787	71,020	9,033	8,680	17,713	44,266	44,467	88,733
Total	227,953	225,608	453,561	92,986	90,568	183,554	320,939	316,176	637,115

**MAP 3.1.4a: ENROLMENT IN PUBLIC KINDERGARTEN
BY REGION, 2003/2004**



**Chart 3.1.4 KINDERGARTEN ENROLMENT BY TYPE OF EDUCATION
AND REGION 2003/2004**



**MAP 3.1.4b: ENROLMENT IN PRIVATE KINDERGARTEN BY
REGION, 2003/2004**

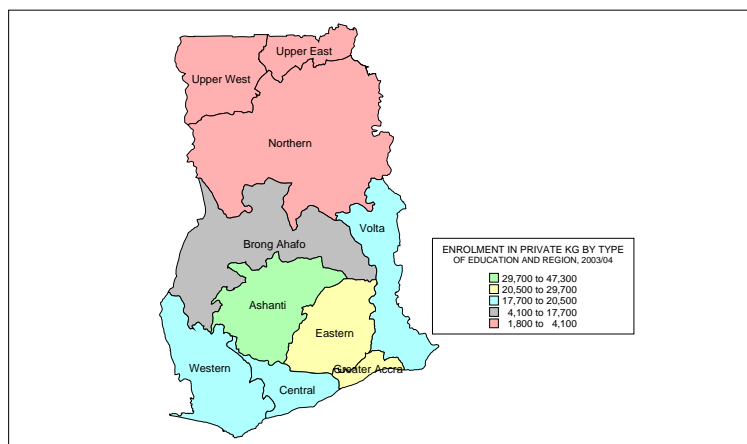


Table 3.1.5 Gross Enrolment Ratios in preschools by region and sex, 2003/2004

REGION	GROSS ENROLMENT RATIOS IN PRESCHOOLS								
	BOYS			GIRLS			TOTAL		
	Pop. 0-5yrs	Enrolment	GER	Pop. 0-5yrs	Enrolment	GER	Pop. 0-5yrs	Enrolment	GER
Ashanti	362,681	81,817	22.6	353,899	78,998	22.3	716,580	160,815	22.4
Brong Ahafo	183,466	49,290	26.9	186,231	48,594	26.1	369,697	97,884	26.5
Central	157,421	44,667	28.4	160,446	44,686	27.9	317,867	89,353	28.1
Eastern	199,152	53,082	26.7	199,657	51,962	26.0	398,809	105,044	26.3
Greater Accra	207,548	37,014	17.8	210,137	36,187	17.2	417,685	73,201	17.5
Northern	211,144	34,298	16.2	219,043	32,041	14.6	430,187	66,339	15.4
Upper East	90,105	14,467	16.1	90,915	14,795	16.3	181,020	29,262	16.2
Upper West	57,074	8,633	15.1	57,758	8,690	15.0	114,832	17,323	15.1
Volta	148,613	36,235	24.4	151,576	35,362	23.3	300,189	71,597	23.9
Western	190,978	53,526	28.0	190,397	53,328	28.0	381,375	106,854	28.0
Total	1,808,182	413,029	22.8	1,820,059	404,643	22.2	3,628,241	817,672	22.5

MAP 3.1.5a: GROSS ENROLMENT RATIOS OF PUPILS IN PRESCHOOLS BY REGION, 2003/2004

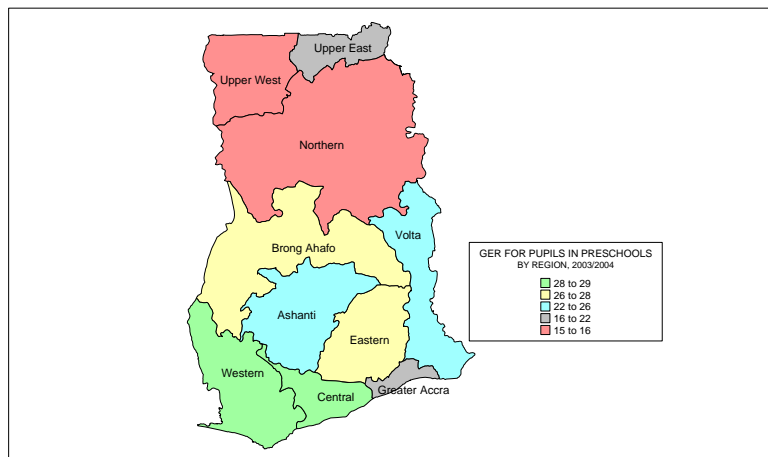
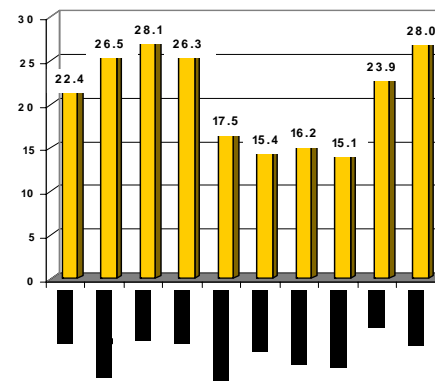


Chart 3.1.5a GROSS ENROLMENT RATIO IN PRESCHOOLS BY REGION 2003/2004



MAP 3.1.5b: GROSS ENROLMENT RATIOS OF GIRLS IN PRESCHOOLS BY REGION, 2003/2004

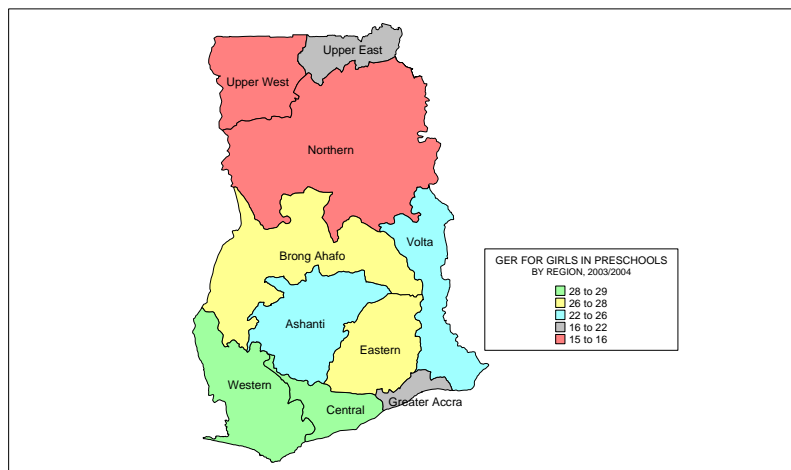


Chart 3.1.5b GROSS ENROLMENT RATIO FOR GIRLS IN PRESCHOOLS BY REGION 2003/2004

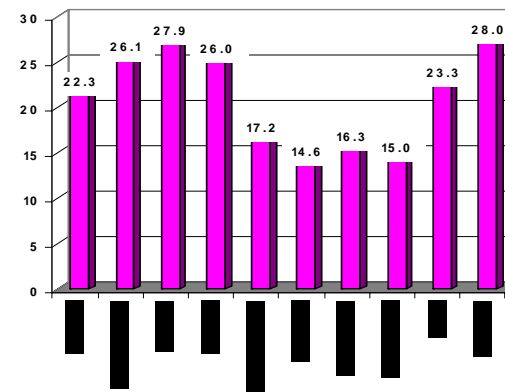


Table 3.1.6 Gross Enrolment Ratios in kindergarten by region and sex, 2003/2004

REGION	GROSS ENROLMENT RATIOS IN KINDERGARTEN								
	BOYS			GIRLS			TOTAL		
	Pop. 4-5yrs	Enrolment	GER	Pop. 4-5yrs	Enrolment	GER	Pop. 4-5yrs	Enrolment	GER
Ashanti	121,638	66,455	54.6	118,716	64,224	54.1	240,354	130,679	54.4
Brong Ahafo	61,543	43,373	70.5	62,214	42,847	68.9	123,757	86,220	69.7
Central	53,680	36,159	67.4	54,833	36,374	66.3	108,513	72,533	66.8
Eastern	68,047	44,868	65.9	68,091	44,194	64.9	136,138	89,062	65.4
Greater Accra	71,921	22,315	31.0	72,607	21,948	30.2	144,528	44,263	30.6
Northern	74,581	20,535	27.5	77,501	19,509	25.2	152,082	40,044	26.3
Upper East	34,767	8,420	24.2	34,650	8,658	25.0	69,417	17,078	24.6
Upper West	22,098	4,062	18.4	21,900	4,042	18.5	43,998	8,104	18.4
Volta	53,593	30,486	56.9	54,982	29,913	54.4	108,575	60,399	55.6
Western	66,134	44,266	66.9	66,288	44,467	67.1	132,422	88,733	67.0
Total	628,002	320,939	51.1	631,782	316,176	50.0	1,259,784	637,115	50.6

MAP 3.1.6a: GROSS ENROLMENT RATIOS FOR PUPILS IN KINDERGARTEN BY REGION, 2003/2004

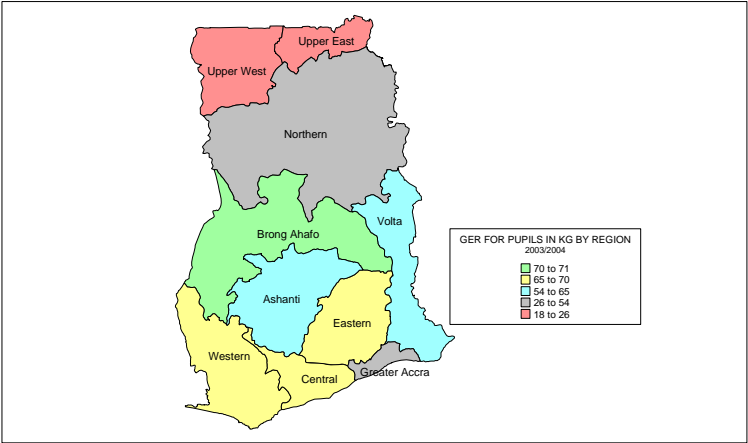
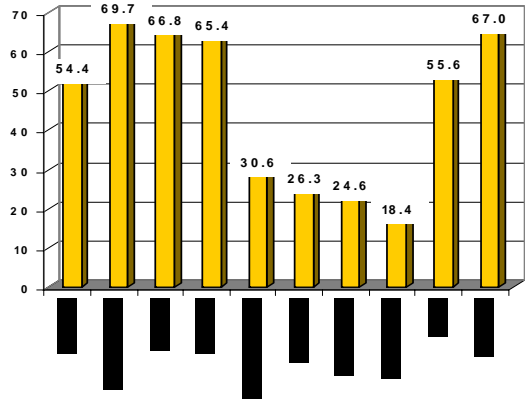


Chart 3.1.6a GROSS ENROLMENT RATIO IN KINDERGARTEN BY REGION 2003/2004



MAP 3.1.6b: GROSS ENROLMENT RATIOS FOR GIRLS IN KINDERGARTEN BY REGION, 2003/2004

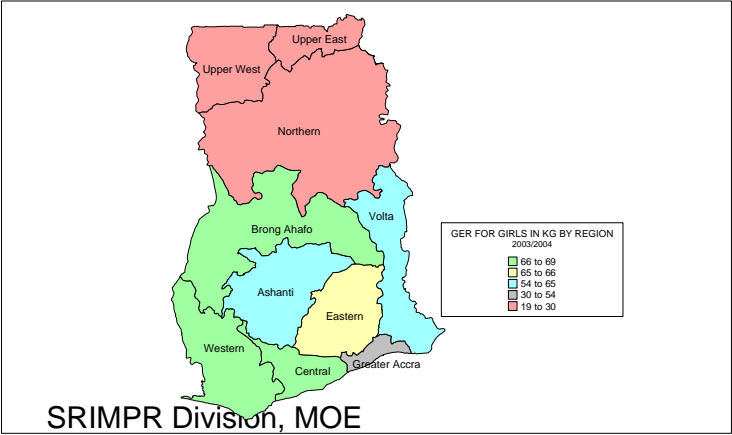


Chart 3.1.6b GROSS ENROLMENT RATIO FOR GIRLS IN KINDERGARTEN BY REGION 2003/2004

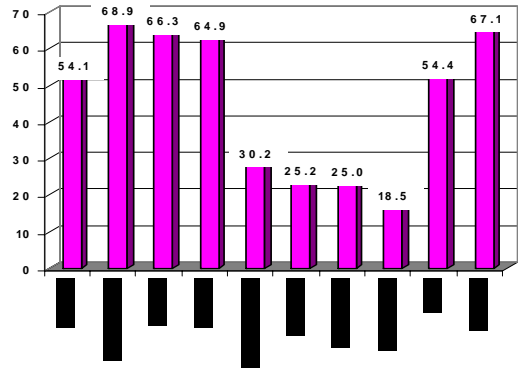


Table 3.1.7 Percentage of Girls Enrolment in preschools* by region, 2003/2004

REGION	PERCENTAGE OF GIRLS ENROLMENT IN PRESCHOOL*								
	PUBLIC			PRIVATE			TOTAL		
	Girls Enr.	Total Enr.	% Girls	Girls Enr.	Total Enr.	% Girls	Girls Enr.	Total Enr.	% Girls
Ashanti	42,642	86,498	49.3	36,356	74,317	48.9	78,998	160,815	49.1
Brong Ahafo	35,460	71,525	49.6	13,134	26,359	49.8	48,594	97,884	49.6
Central	28,873	57,528	50.2	15,813	31,825	49.7	44,686	89,353	50.0
Eastern	33,969	68,387	49.7	17,993	36,657	49.1	51,962	105,044	49.5
Greater Accra	8,896	17,890	49.7	27,291	55,311	49.3	36,187	73,201	49.4
Northern	27,371	56,843	48.2	4,670	9,496	49.2	32,041	66,339	48.3
Upper East	11,833	23,406	50.6	2,962	5,856	50.6	14,795	29,262	50.6
Upper West	6,386	12,704	50.3	2,304	4,619	49.9	8,690	17,323	50.2
Volta	22,562	45,623	49.5	12,800	25,974	49.3	35,362	71,597	49.4
Western	39,946	79,553	50.2	13,382	27,301	49.0	53,328	106,854	49.9
Total	257,938	519,957	49.6	146,705	297,715	49.3	404,643	817,672	49.5

* This includes kindergarten

MAP 3.1.7a: PERCENTAGE OF GIRLS ENROLMENT IN PUBLIC PRESCHOOLS BY REGION, 2003/2004

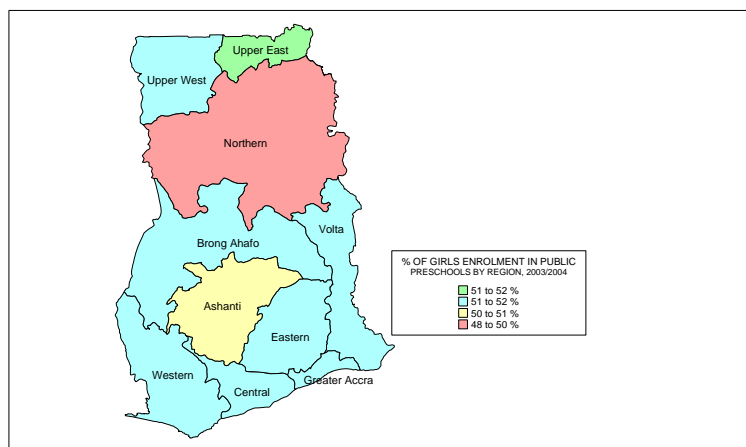
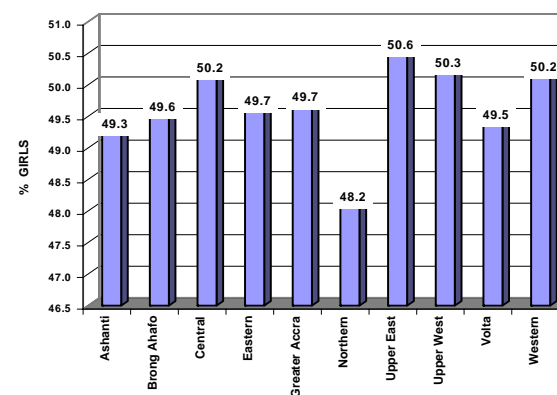


Chart 3.1.7a PERCENTAGE OF GIRLS ENROLMENT IN PUBLIC PRESCHOOLS BY REGION 2003/2004



MAP 3.1.7b: PERCENTAGE OF GIRLS ENROLMENT IN PRIVATE PRESCHOOLS BY REGION, 2003/2004

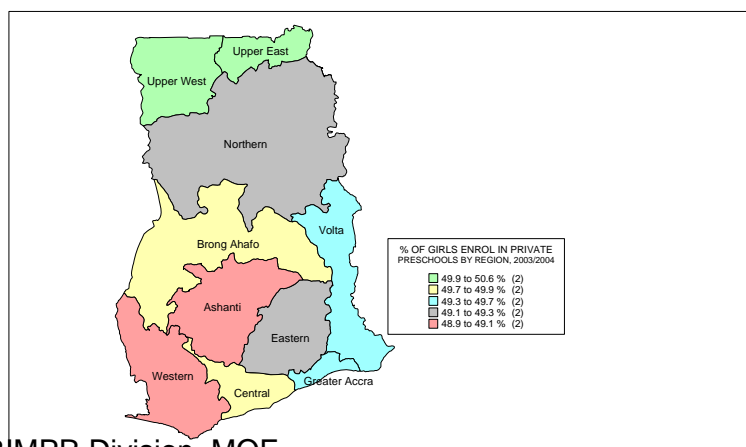


Chart 3.1.7b PERCENTAGE OF GIRLS ENROLMENT IN PRIVATE PRESCHOOLS BY REGION 2003/2004

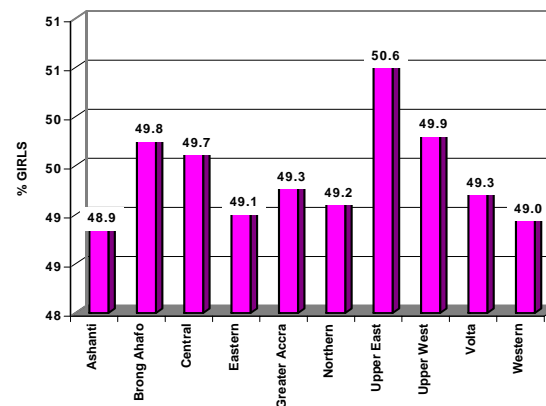


Table 3.1.8 Percentage of Girls Enrolment in kindergarten by region, 2003/2004

REGION	PERCENTAGE OF GIRLS ENROLMENT IN KINDERGARTEN								
	PUBLIC			PRIVATE			TOTAL		
	Girls Enr.	Total Enr.	% Girls	Girls Enr.	Total Enr.	% Girls	Girls Enr.	Total Enr.	% Girls
Ashanti	41,138	83,404	49.3	23,086	47,275	48.8	64,224	130,679	49.1
Brong Ahafo	34,127	68,768	49.6	8,720	17,452	50.0	42,847	86,220	49.7
Central	26,119	52,036	50.2	10,255	20,497	50.0	36,374	72,533	50.1
Eastern	32,299	64,970	49.7	11,895	24,092	49.4	44,194	89,062	49.6
Greater Accra	7,283	14,593	49.9	14,665	29,670	49.4	21,948	44,263	49.6
Northern	17,504	35,956	48.7	2,005	4,088	49.0	19,509	40,044	48.7
Upper East	7,170	14,099	50.9	1,488	2,979	49.9	8,658	17,078	50.7
Upper West	3,085	6,223	49.6	957	1,881	50.9	4,042	8,104	49.9
Volta	21,096	42,492	49.6	8,817	17,907	49.2	29,913	60,399	49.5
Western	35,787	71,020	50.4	8,680	17,713	49.0	44,467	88,733	50.1
Total	225,608	453,561	49.7	90,568	183,554	49.3	316,176	637,115	49.6

MAP 3.1.8a: PERCENTAGE OF GIRLS ENROLMENT IN PUBLIC KINDERGARTEN BY REGION, 2003/2004

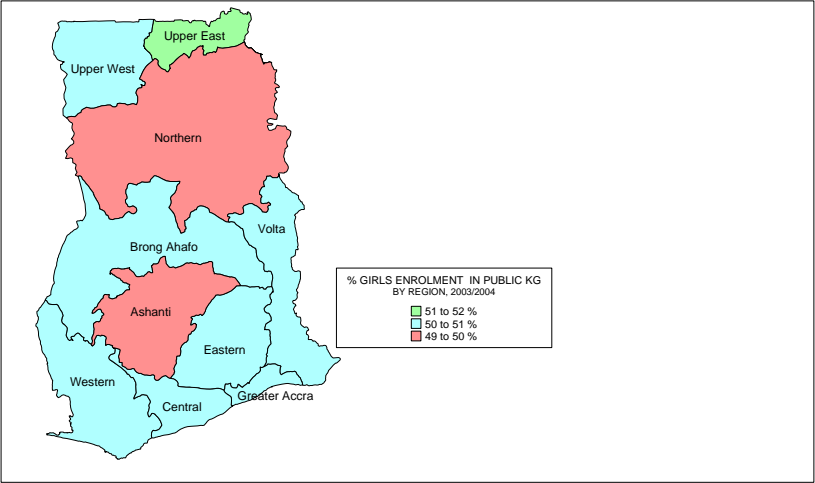
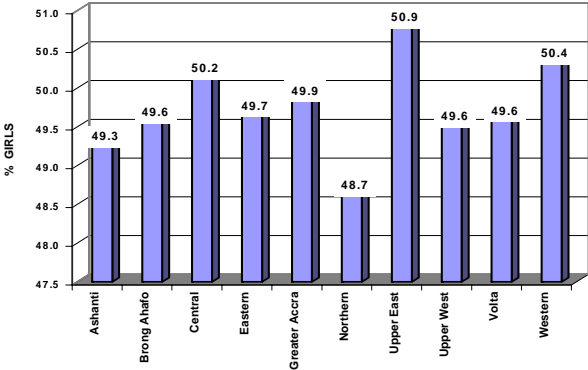


Chart 3.1.8a PERCENTAGE OF GIRLS ENROLMENT IN PUBLIC KINDERGARTEN BY REGION 2003/2004



MAP 3.1.8b: PERCENTAGE OF GIRLS ENROLMENT IN PRIVATE KINDERGARTEN BY REGION, 2003/2004

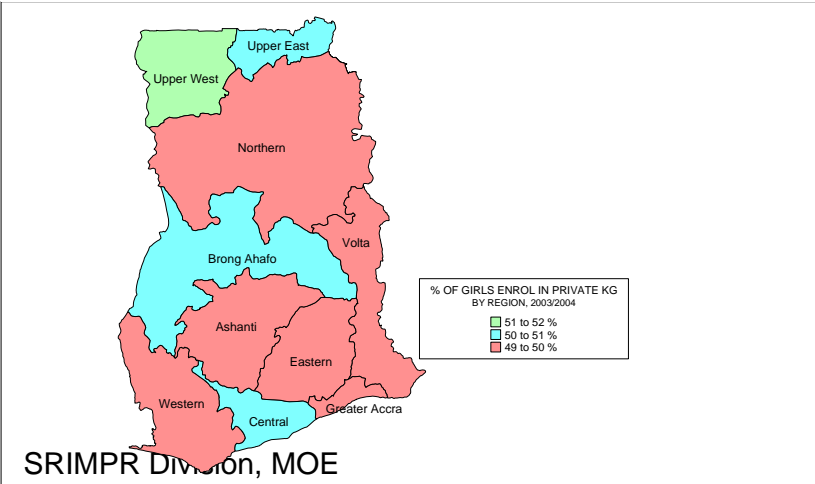


Chart 3.1.8b PERCENTAGE OF GIRLS ENROLMENT IN PRIVATE KINDERGARTEN BY REGION 2003/2004

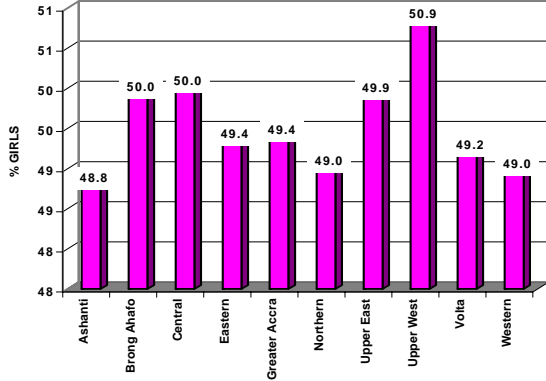
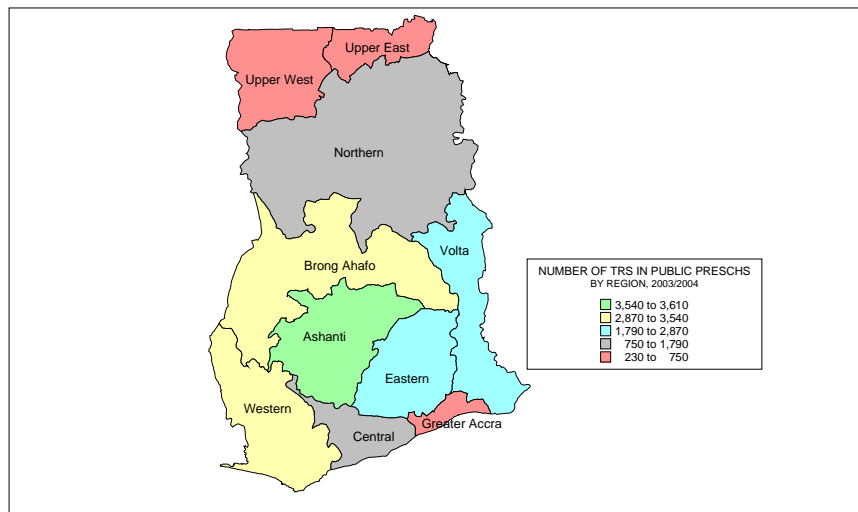


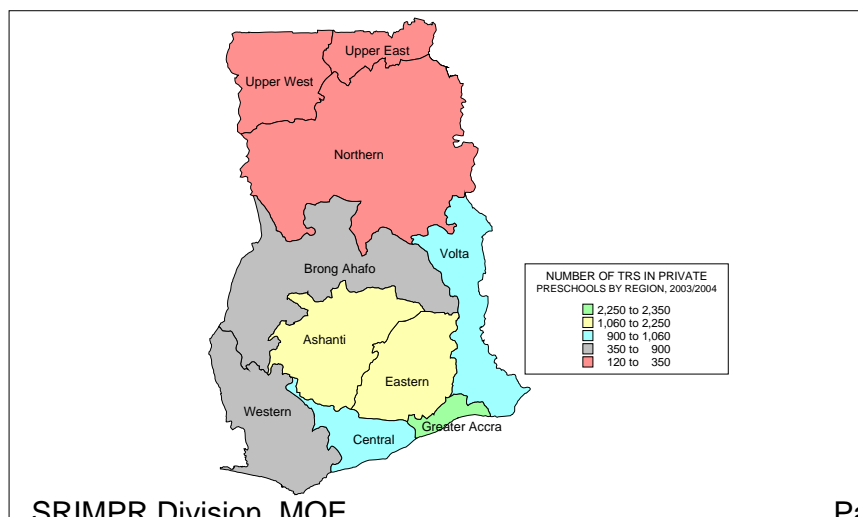
Table 3.1.9 Number of teachers in preschools by type of education and region, 2003/2004

REGION	NUMBER OF TEACHERS			NUMBER OF TRAINED TEACHERS		
	Public	Private	Total	Public	Private	Total
Ashanti	3,609	2,246	5,855	1,352	183	1,535
Brong Ahafo	3,539	899	4,438	568	42	610
Central	1,785	1,056	2,841	397	61	458
Eastern	2,869	1,282	4,151	1,139	99	1,238
Greater Accra	747	2,342	3,089	429	155	584
Northern	1,152	347	1,499	249	16	265
Upper East	413	152	565	93	9	102
Upper West	236	127	363	72	7	79
Volta	1,903	911	2,814	676	75	751
Western	2,881	839	3,720	419	31	450
Total	19,134	10,201	29,335	5,394	678	6,072

**MAP 3.1.9a: NUMBER OF TEACHERS IN PUBLIC PRESCHOOLS
BY REGION, 2003/2004**



**MAP 3.1.9b: NUMBER OF TEACHERS IN PRIVATE PRESCHOOLS BY
REGION, 2003/2004**



**Chart 3.1.9 NUMBER OF TEACHERS IN PRESCHOOLS BY TYPE
OF EDUCATION AND REGION 2003/2004**

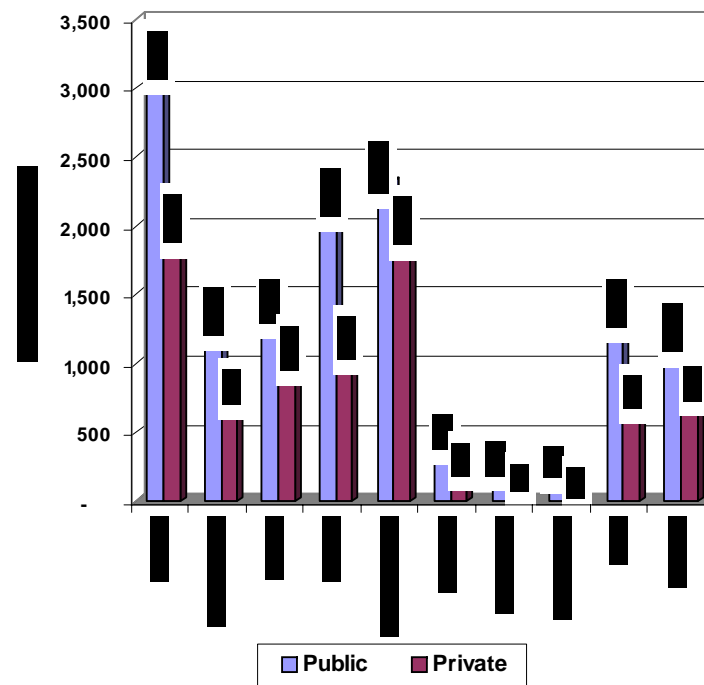
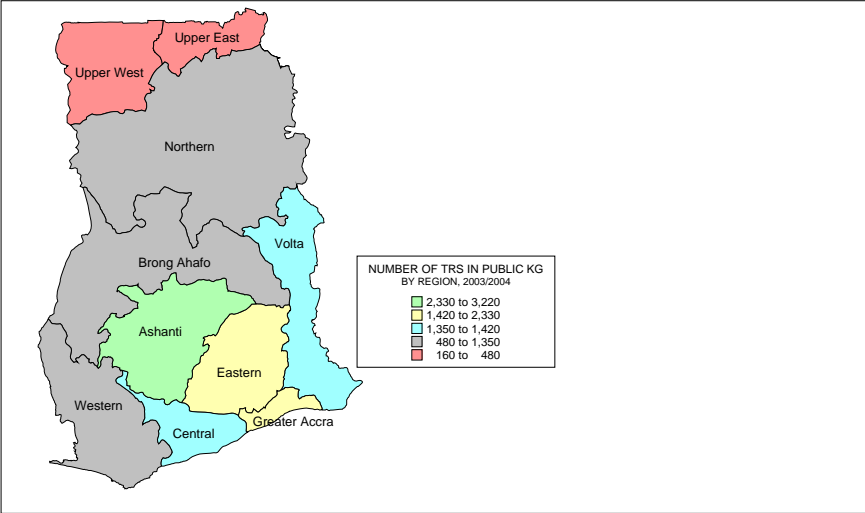


Table 3.1.10 Number of teachers in kindergarten by type of education and region, 2003/2004

REGION	NUMBER OF TEACHERS			NUMBER OF TRAINED TEACHERS		
	Public	Private	Total	Public	Private	Total
Ashanti	3,212	2,019	5,231	1,351	181	1,532
Brong Ahafo	1,347	800	2,147	568	41	609
Central	1,419	1,075	2,494	397	61	458
Eastern	2,216	1,167	3,383	1,136	98	1,234
Greater Accra	2,326	2,010	4,336	426	152	578
Northern	482	273	755	216	16	232
Upper East	236	157	393	87	8	95
Upper West	165	104	269	45	3	48
Volta	1,409	763	2,172	676	72	748
Western	1,229	839	2,068	419	31	450
Total	14,041	9,207	23,248	5,321	663	5,984

MAP 3.1.10a: NUMBER OF TEACHERS IN PUBLIC KINDERGARTEN BY REGION, 2003/2004



MAP 3.1.10b: NUMBER OF TEACHERS IN PRIVATE KINDERGARTEN BY REGION, 2003/2004

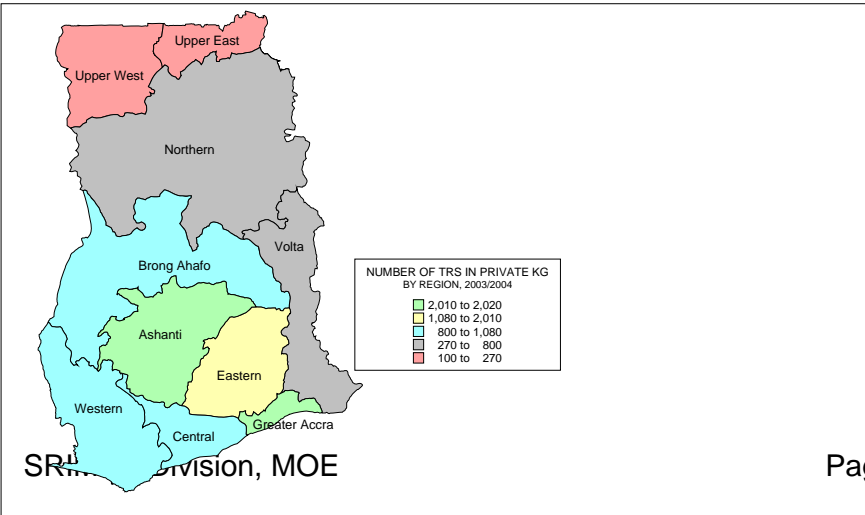


Chart 3.1.10 NUMBER OF TEACHERS IN KINDERGARTEN BY TYPE OF EDUCATION AND REGION 2003/2004

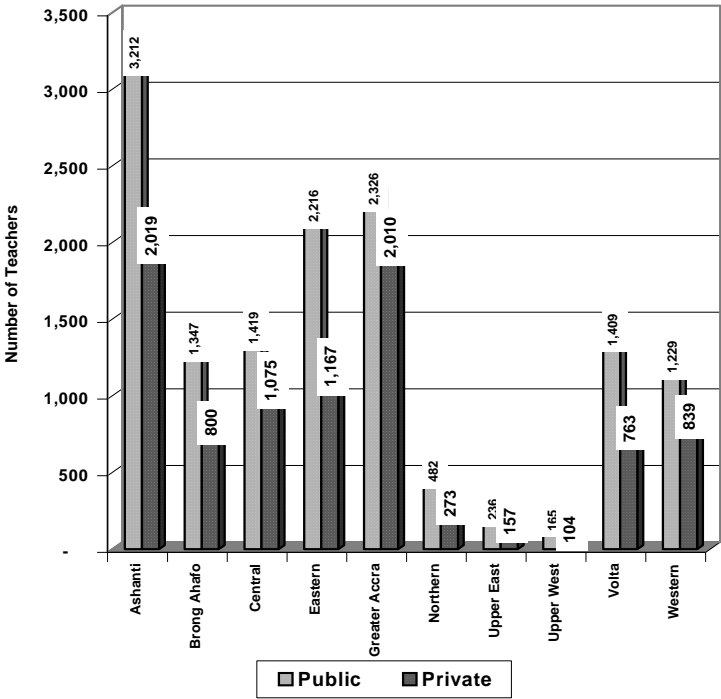


Table 3.1.11 Percentage of trained teachers in preschools by type of education and region, 2003/2004

REGION	PERCENTAGE OF TRAINED TEACHERS		
	Public	Private	Total
Ashanti	37.5	8.1	26.2
Brong Ahafo	16.0	4.7	13.7
Central	22.2	5.8	16.1
Eastern	39.7	7.7	29.8
Greater Accra	57.4	6.6	18.9
Northern	21.6	4.6	17.7
Upper East	22.5	5.9	18.1
Upper West	30.5	5.5	21.8
Volta	35.5	8.2	26.7
Western	14.5	3.7	12.1
Total	28.2	6.6	20.7

MAP 3.1.11a: PERCENTAGE OF TRAINED TEACHERS IN PUBLIC PRESCHOOLS BY REGION, 2003/2004

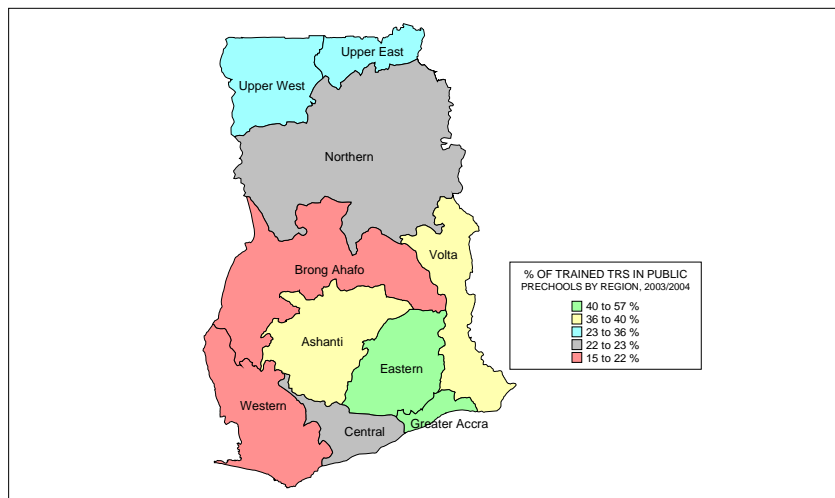
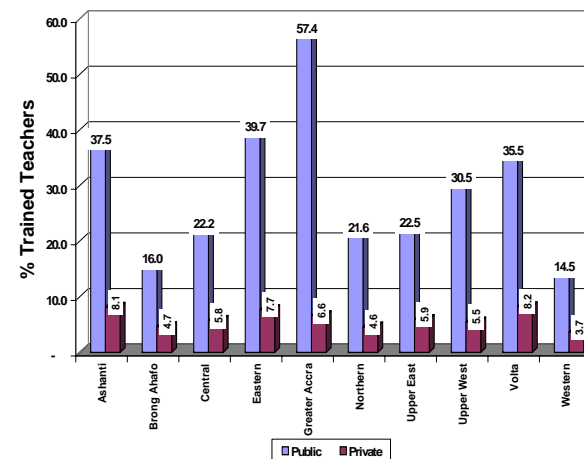


Chart 3.1.11 PERCENTAGE OF TRAINED TEACHERS IN PRESCHOOLS BY TYPE OF EDUCATION AND REGION 2003/2004



MAP 3.1.11b: PERCENTAGE OF TRAINED TEACHERS IN PRIVATE PRESCHOOLS BY REGION, 2003/2004

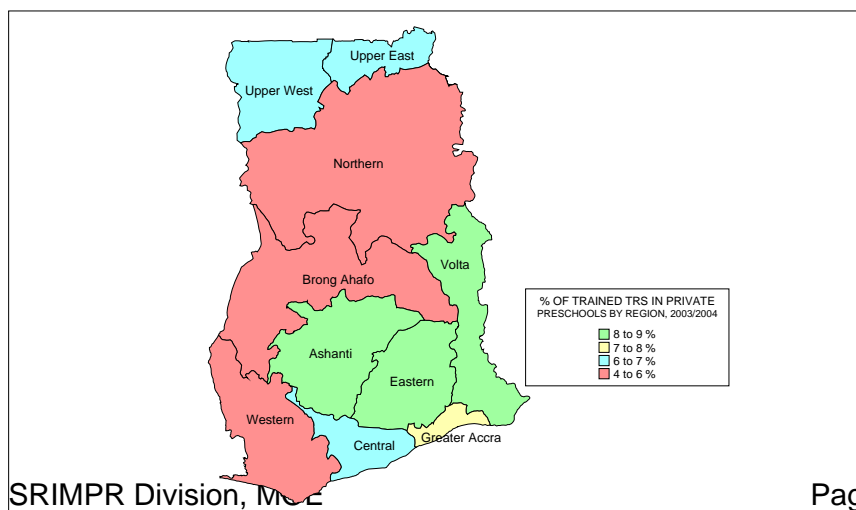


Table 3.1.12 Percentage of trained teachers in kindergarten by type of education and region, 2003/2004

REGION	PERCENTAGE OF TRAINED TEACHERS		
	Public	Private	Total
Ashanti	42.1	9.0	29.3
Brong Ahafo	42.2	5.1	28.4
Central	28.0	5.7	18.4
Eastern	51.3	8.4	36.5
Greater Accra	18.3	7.6	13.3
Northern	44.8	5.9	30.7
Upper East	36.9	5.1	24.2
Upper West	27.3	2.9	17.8
Volta	48.0	9.4	34.4
Western	34.1	3.7	21.8
Total	37.9	7.2	25.7

MAP 3.1.12a: PERCENTAGE OF TRAINED TEACHERS IN PUBLIC KINDERGARTEN BY REGION, 2003/2004

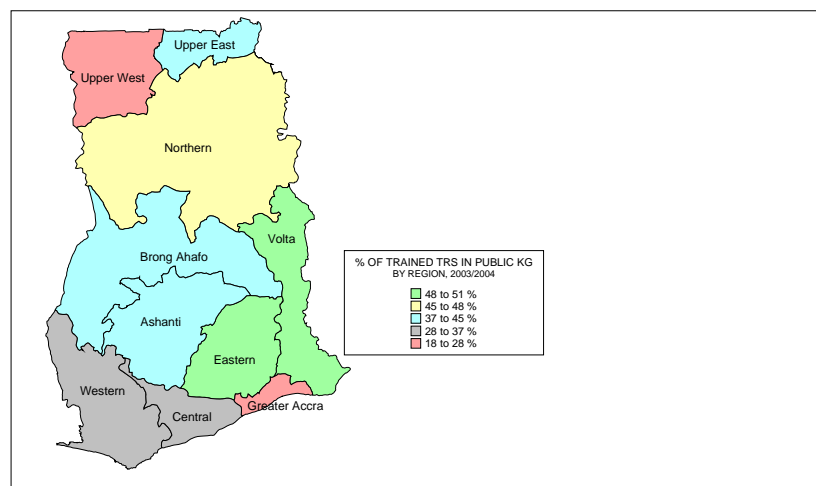
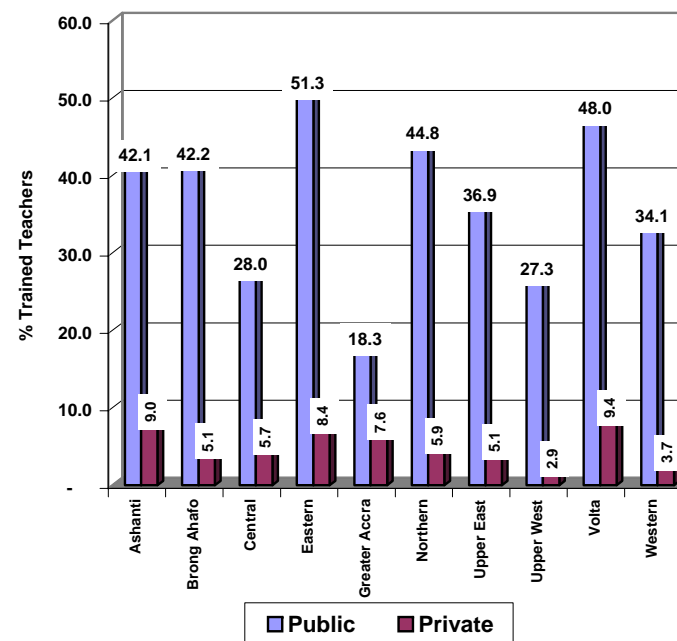


Chart 3.1.12 PERCENTAGE OF TRAINED TEACHERS IN KINDERGARTEN BY TYPE OF EDUCATION AND REGION 2003/2004



MAP 3.1.12b: PERCENTAGE OF TRAINED TEACHERS IN PRIVATE KINDERGARTEN BY REGION, 2003/2004

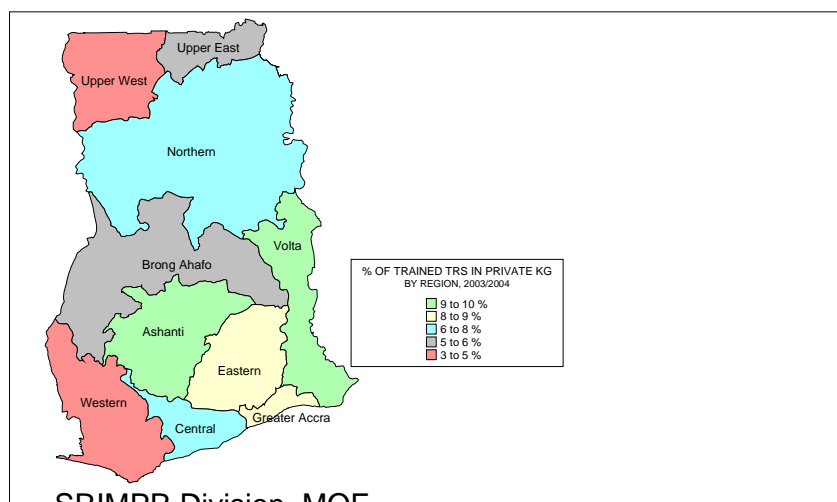
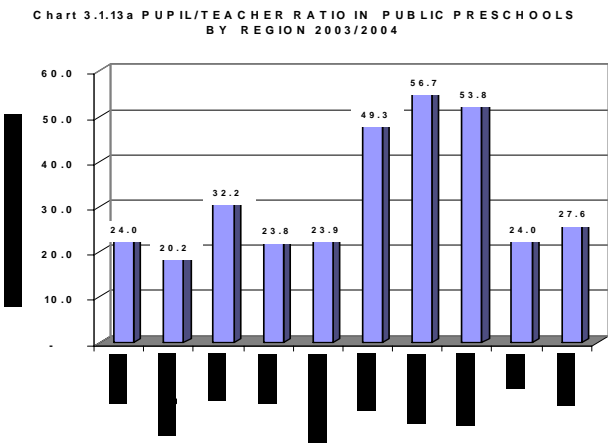
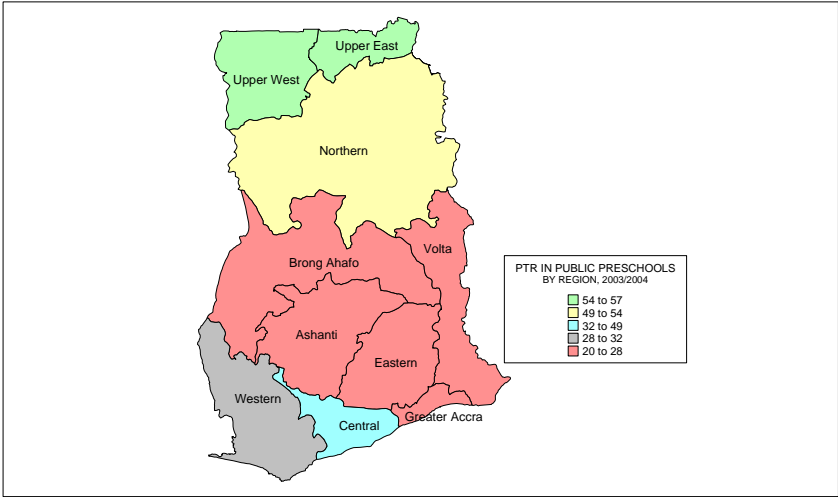


Table 3.1.13 Pupil-Teacher Ratios in preschools by type of education and region, 2003/2004

REGION	PUPIL/TEACHER RATIOS								
	PUBLIC			PRIVATE			TOTAL		
	Enrol.	Teachers	P/T Ratio	Enrol.	Teachers	P/T Ratio	Enrol.	Teachers	P/T Ratio
Ashanti	86,498	3,609	24.0	74,317	2,246	33.1	160,815	5,855	27.5
Brong Ahafo	71,525	3,539	20.2	26,359	899	29.3	97,884	4,438	22.1
Central	57,528	1,785	32.2	31,825	1,056	30.1	89,353	2,841	31.5
Eastern	68,387	2,869	23.8	36,657	1,282	28.6	105,044	4,151	25.3
Greater Accra	17,890	747	23.9	55,311	2,342	23.6	73,201	3,089	23.7
Northern	56,843	1,152	49.3	9,496	347	27.4	66,339	1,499	44.3
Upper East	23,406	413	56.7	5,856	152	38.5	29,262	565	51.8
Upper West	12,704	236	53.8	4,619	127	36.4	17,323	363	47.7
Volta	45,623	1,903	24.0	25,974	911	28.5	71,597	2,814	25.4
Western	79,553	2,881	27.6	27,301	839	32.5	106,854	3,720	28.7
Total	519,957	19,134	27.2	297,715	10,201	29.2	817,672	29,335	27.9

MAP 3.1.13a: PUPIL-TEACHER RATIOS IN PUBLIC PRESCHOOLS BY REGION, 2003/2004



MAP 3.1.13b: PUPIL-TEACHER RATIOS IN PRIVATE PRESCHOOLS BY REGION, 2003/2004

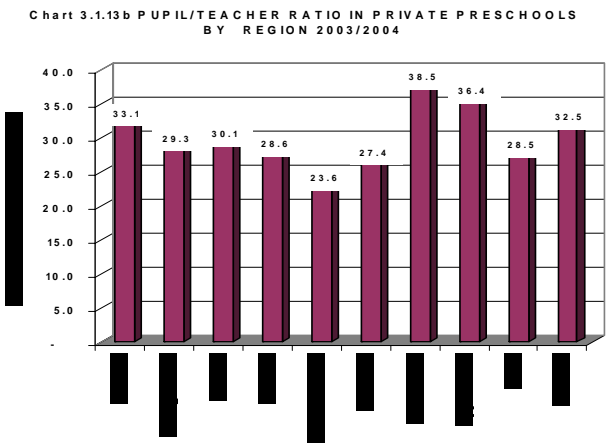
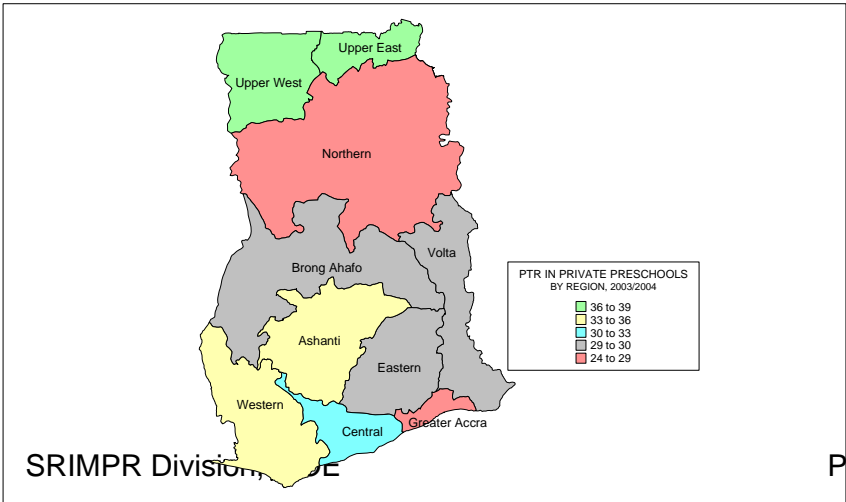
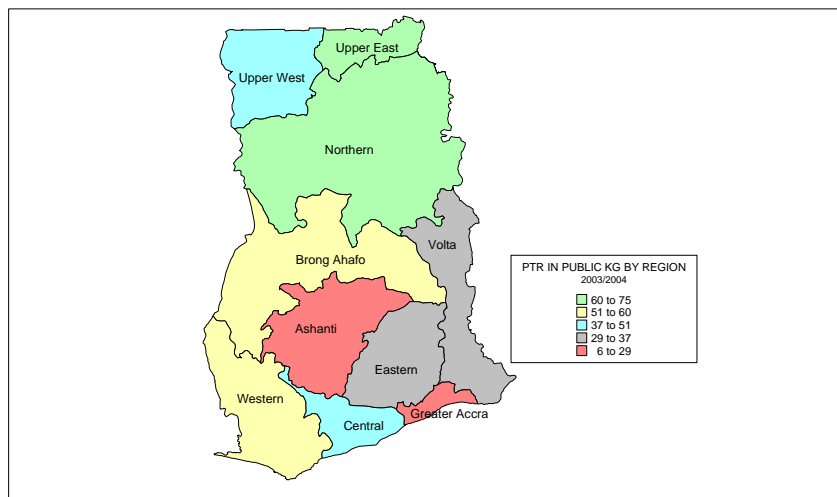


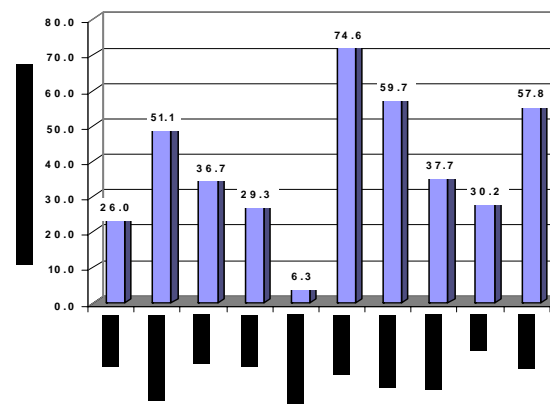
Table 3.1.14 Pupil-Teacher Ratios in kindergarten by type of education and region, 2003/2004

REGION	PUPIL/TEACHER RATIOS								
	PUBLIC			PRIVATE			TOTAL		
	Enrol.	Teachers	P/T Ratio	Enrol.	Teachers	P/T Ratio	Enrol.	Teachers	P/T Ratio
Ashanti	83,404	3,212	26.0	47,275	2,019	23.4	130,679	5,231	25.0
Brong Ahafo	68,768	1,347	51.1	17,452	800	21.8	86,220	2,147	40.2
Central	52,036	1,419	36.7	20,497	1,075	19.1	72,533	2,494	29.1
Eastern	64,970	2,216	29.3	24,092	1,167	20.6	89,062	3,383	26.3
Greater Accra	14,593	2,326	6.3	29,670	2,010	14.8	44,263	4,336	10.2
Northern	35,956	482	74.6	4,088	273	15.0	40,044	755	53.0
Upper East	14,099	236	59.7	2,979	157	19.0	17,078	393	43.5
Upper West	6,223	165	37.7	1,881	104	18.1	8,104	269	30.1
Volta	42,492	1,409	30.2	17,907	763	23.5	60,399	2,172	27.8
Western	71,020	1,229	57.8	17,713	839	21.1	88,733	2,068	42.9
Total	453,561	14,041	32.3	183,554	9,207	19.9	637,115	23,248	27.4

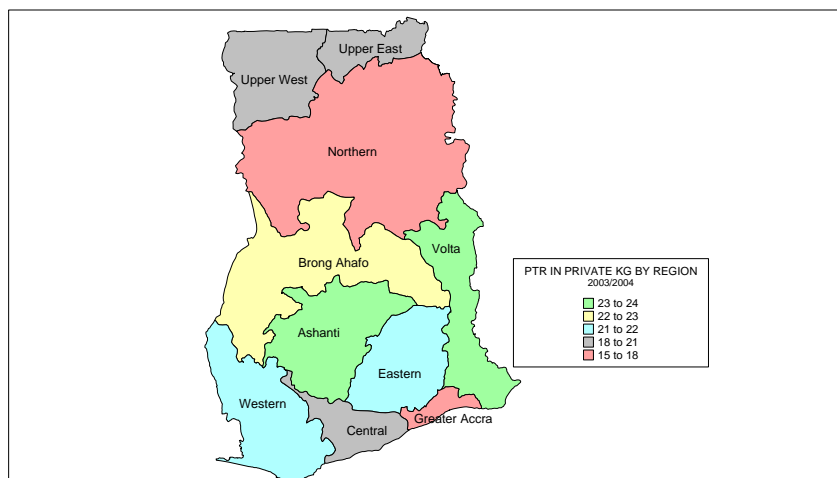
**MAP 3.1.14a: PUPIL-TEACHER RATIOS IN PUBLIC KINDERGARTEN
BY REGION, 2003/2004**



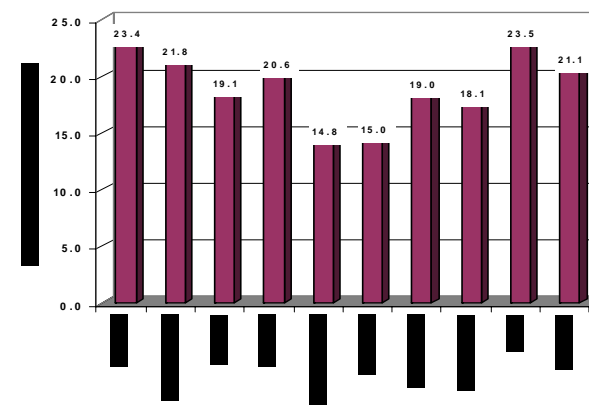
**Chart 3.1.14a PUPIL/TEACHER RATIO IN PUBLIC KINDERGARTEN
BY REGION 2003/2004**



**MAP 3.1.14b: PUPIL-TEACHER RATIOS IN PUBLIC KINDERGARTEN
BY REGION, 2003/2004**



**Chart 3.1.14b PUPIL/TEACHER RATIO IN PRIVATE KINDERGARTEN
BY REGION 2003/2004**



PART 3.2

SUMMARY TABLES, MAPS AND CHARTS FOR PRIMARY SCHOOLS

3.2 SUMMARY TABLES, CHARTS AND MAPS FOR PRIMARY SCHOOLS

Table 3.2.1 Number of primary schools by type of education and region, 2003/2004

REGION	NUMBER OF PRIMARY SCHOOLS		
	Public	Private	Total
Ashanti	1,830	666	2,496
Brong Ahafo	1,394	224	1,618
Central	1,174	291	1,465
Eastern	1,815	378	2,193
Greater Accra	720	580	1,300
Northern	1,426	53	1,479
Upper East	466	26	492
Upper West	388	10	398
Volta	1,393	197	1,590
Western	1,289	299	1,588
Total	11,895	2,724	14,619

MAP 3.2.1a: NUMBER OF PUBLIC PRIMARY SCHOOLS BY REGION. 2003/2004

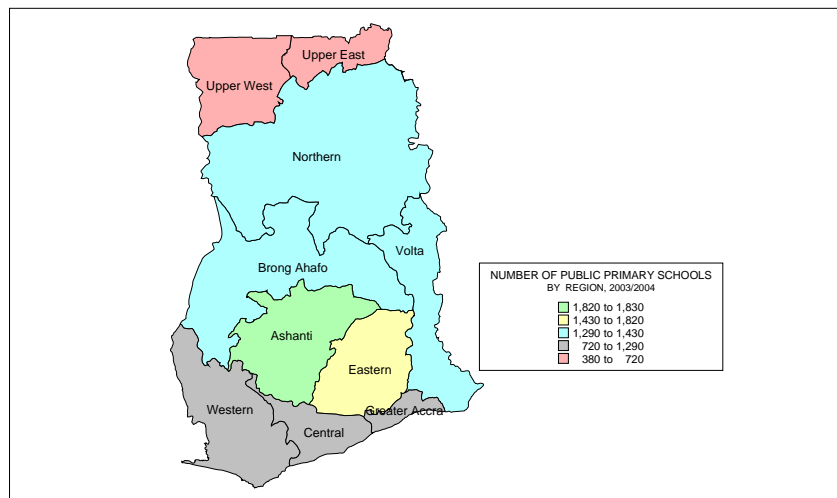
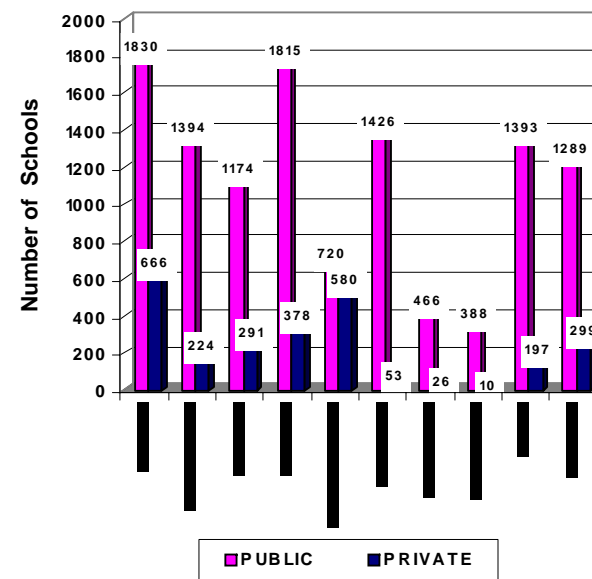


Chart 3.2.1 NUMBER OF PRIMARY SCHOOLS BY TYPE OF EDUCATION AND REGION 2003/2004



MAP 3.2.1b: NUMBER OF PRIVATE PRIMARY SCHOOLS BY REGION, 2003/2004

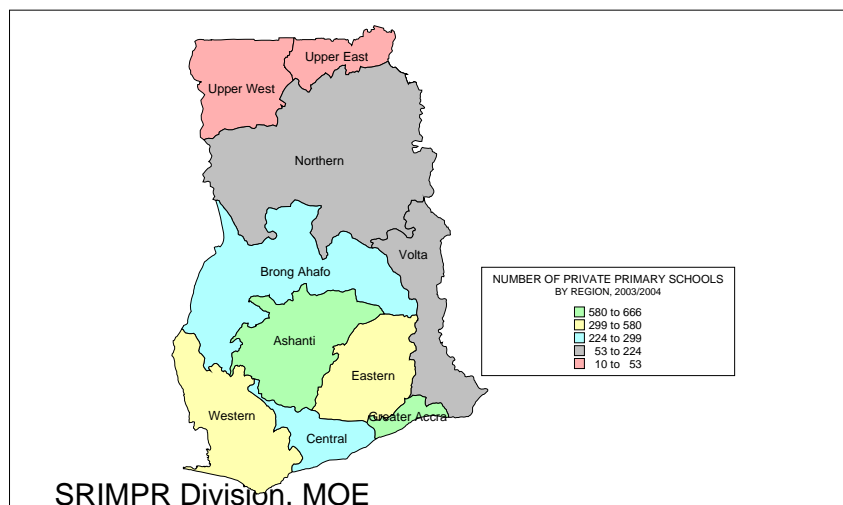
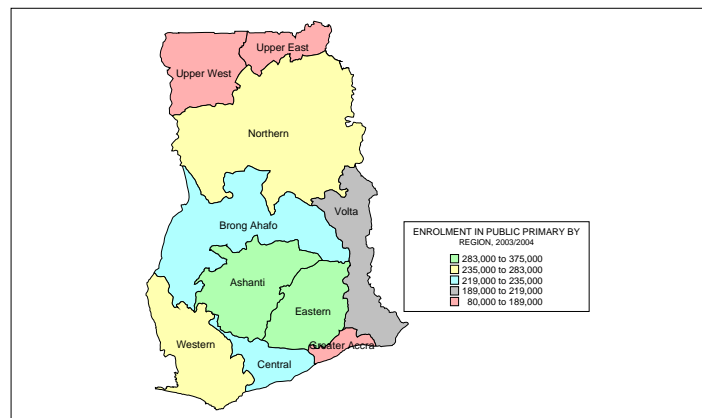


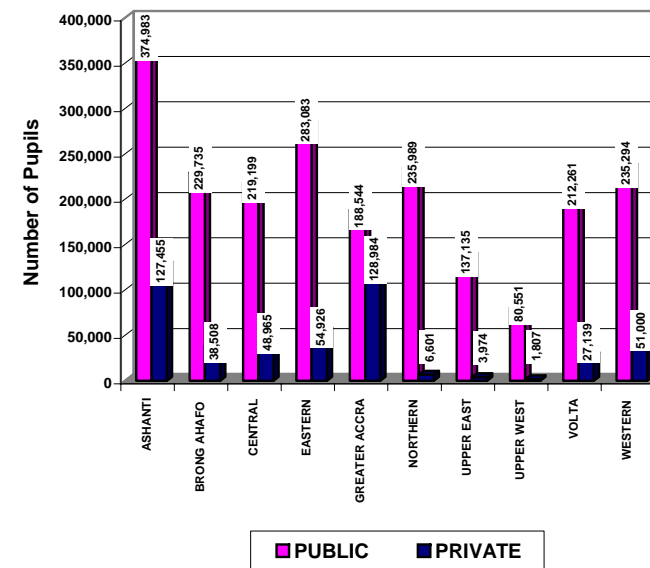
Table 3.2.2 Enrolment in primary schools by type of education, region and sex, 2003/2004

REGION	ENROLMENT IN PRIMARY SCHOOL								
	PUBLIC			PRIVATE			TOTAL		
	Boys	Girls	Total	Boys	Girls	Total	Boys	Girls	Total
Ashanti	195,086	179,897	374,983	65,015	62,440	127,455	260,101	242,337	502,438
Brong Ahafo	121,877	107,858	229,735	20,122	18,386	38,508	141,999	126,244	268,243
Central	113,979	105,220	219,199	24,830	24,135	48,965	138,809	129,355	268,164
Eastern	148,276	134,807	283,083	28,241	26,685	54,926	176,517	161,492	338,009
Greater Accra	93,451	95,093	188,544	65,317	63,667	128,984	158,768	158,760	317,528
Northern	131,981	104,008	235,989	3,444	3,157	6,601	135,425	107,165	242,590
Upper East	71,859	65,276	137,135	2,026	1,948	3,974	73,885	67,224	141,109
Upper West	41,050	39,501	80,551	943	864	1,807	41,993	40,365	82,358
Volta	112,182	100,079	212,261	14,261	12,878	27,139	126,443	112,957	239,400
Western	123,487	111,807	235,294	26,486	24,514	51,000	149,973	136,321	286,294
Total	1,153,228	1,043,546	2,196,774	250,685	238,674	489,359	1,403,913	1,282,220	2,686,133

**MAP 3.2.2a: ENROLMENT IN PUBLIC PRIMARY SCHOOLS
BY REGION, 2003/2004**



**Chart 3.2.2 PRIMARY SCHOOLS ENROLMENT BY TYPE OF EDUCATION
AND REGION 2003/2004**



**MAP 3.2.2b: ENROLMENT IN PRIVATE PRIMARY SCHOOLS
BY REGION, 2003/2004**

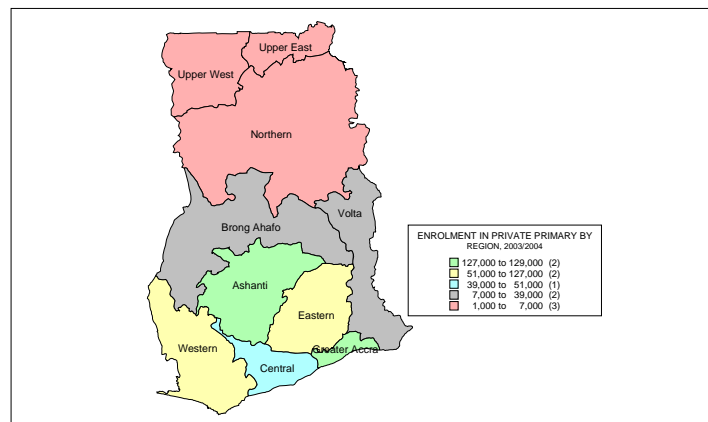


Table 3.2.3 Gross Enrolment Ratios in primary schools by region and sex, 2003/2004

REGION	GROSS ENROLMENT RATIOS IN PRIMARY SCHOOL								
	BOYS			GIRLS			TOTAL		
	Pop. 6-11yrs	P1-6 Enrol.	GER	Pop. 6-11yrs	P1-6 Enrol.	GER	Pop. 6-11yrs	P1-6 Enrol.	GER
Ashanti	328,826	260,101	79.1	325,696	242,337	74.4	654,522	502,438	76.8
Brong Ahafo	169,320	141,999	83.9	166,834	126,244	75.7	336,154	268,243	79.8
Central	152,375	138,809	91.1	150,333	129,355	86.0	302,708	268,164	88.6
Eastern	197,173	176,517	89.5	189,729	161,492	85.1	386,902	338,009	87.4
Greater Accra	204,069	158,768	77.8	216,506	158,760	73.3	420,575	317,528	75.5
Northern	183,553	135,425	73.8	179,600	107,165	59.7	363,153	242,590	66.8
Upper East	96,014	73,885	77.0	89,061	67,224	75.5	185,075	141,109	76.2
Upper West	59,355	41,993	70.7	55,844	40,365	72.3	115,199	82,358	71.5
Volta	152,425	126,443	83.0	150,102	112,957	75.3	302,527	239,400	79.1
Western	180,787	149,973	83.0	178,265	136,321	76.5	359,052	286,294	79.7
Total	1,723,897	1,403,913	81.4	1,701,970	1,282,220	75.3	3,425,867	2,686,133	78.4

MAP 3.2.3a: GROSS ENROLMENT RATIOS FOR PUPILS IN PRIMARY SCHOOLS BY REGION, 2003/2004

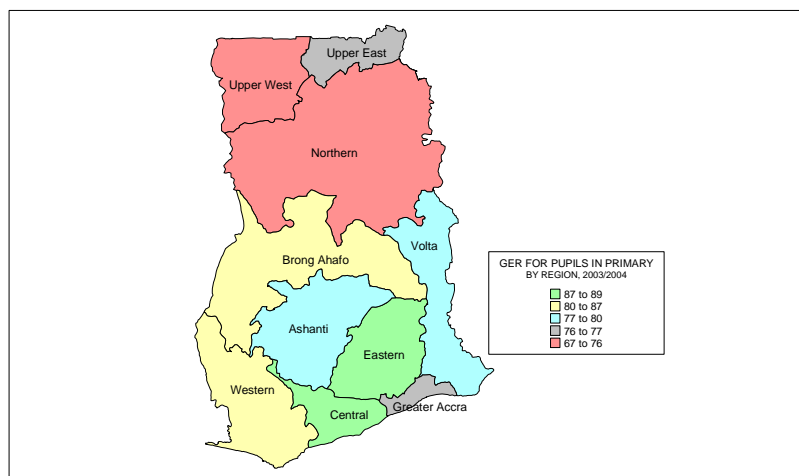
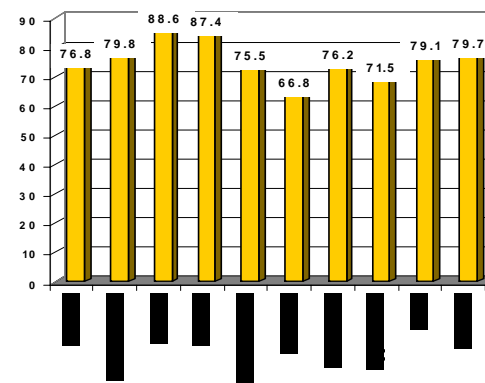


Chart 3.2.3a GROSS ENROLMENT RATIO IN PRIMARY SCHOOLS BY REGION 2003/2004



MAP 3.2.3a: GROSS ENROLMENT RATIOS FOR GIRLS IN PRIMARY SCHOOLS BY REGION, 2003/2004

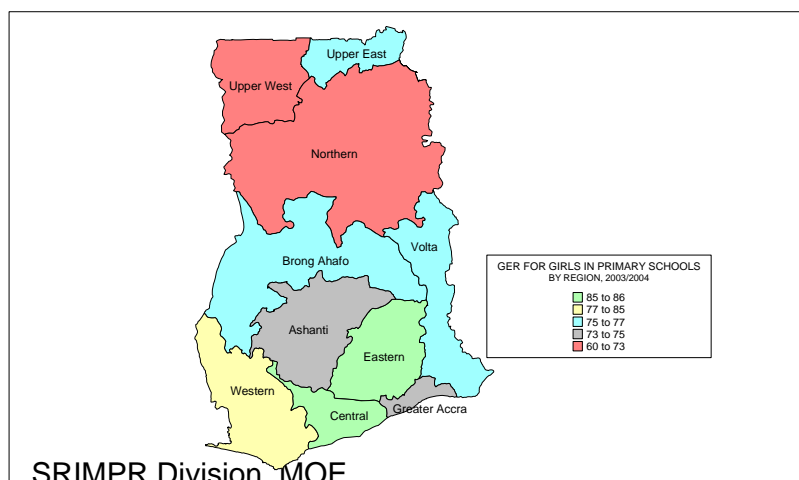


Chart 3.2.3b GROSS ENROLMENT RATIO FOR GIRLS IN PRIMARY SCHOOLS BY REGION 2003/2004

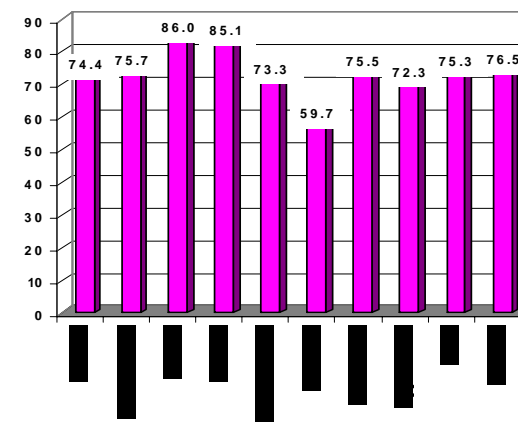


Table 3.2.4 Enrolment in Primary One by type of education, region and sex, 2003/2004

REGION	ENROLMENT IN PRIMARY ONE								
	PUBLIC			PRIVATE			TOTAL		
	Boys	Girls	Total	Boys	Girls	Total	Boys	Girls	Total
Ashanti	37,436	35,523	72,959	11,721	11,343	23,064	49,157	46,866	96,023
Brong Ahafo	25,042	23,409	48,451	3,631	3,710	7,341	28,673	27,119	55,792
Central	20,504	19,689	40,193	4,492	4,544	9,036	24,996	24,233	49,229
Eastern	27,980	26,808	54,788	5,411	5,116	10,527	33,391	31,924	65,315
Greater Accra	14,890	15,272	30,162	11,148	10,434	21,582	26,038	25,706	51,744
Northern	31,823	29,811	61,634	1,095	1,127	2,222	32,918	30,938	63,856
Upper East	18,759	17,818	36,577	514	523	1,037	19,273	18,341	37,614
Upper West	11,331	11,026	22,357	201	210	411	11,532	11,236	22,768
Volta	21,836	20,531	42,367	2,852	2,579	5,431	24,688	23,110	47,798
Western	23,847	22,643	46,490	4,551	4,411	8,962	28,398	27,054	55,452
Total	233,448	222,530	455,978	45,616	43,997	89,613	279,064	266,527	545,591

MAP 3.2.4a: PRIMARY ONE ENROLMENT IN PUBLIC SCHOOLS BY REGION, 2003/2004

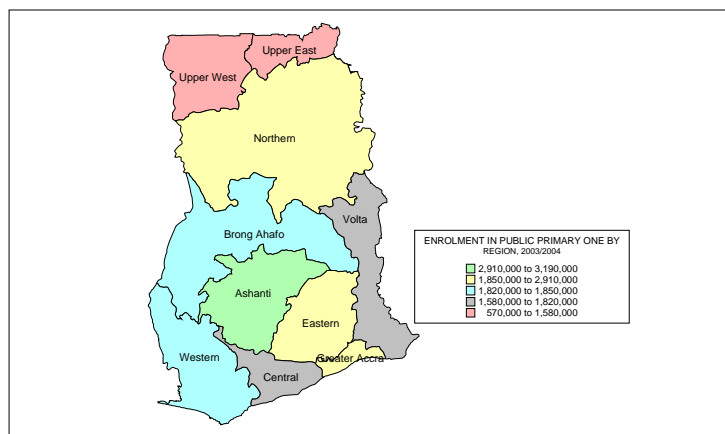
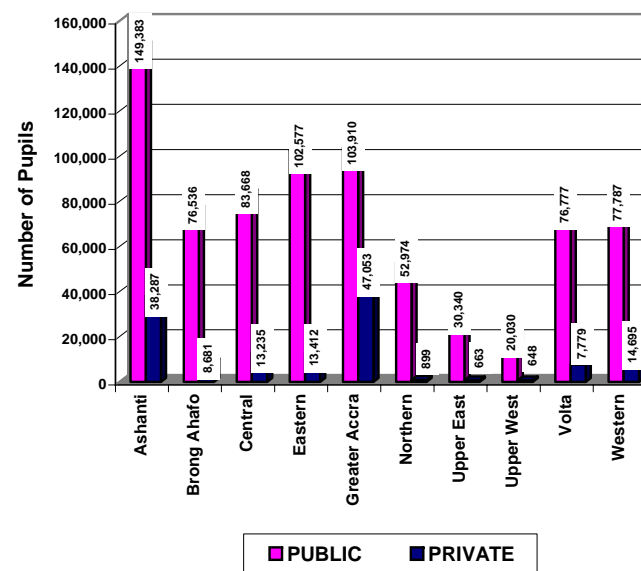


Chart 3.2.4 ENROLMENT IN PRIMARY ONE BY TYPE OF EDUCATION AND REGION 2003/2004



MAP 3.2.4b: PRIMARY ONE ENROLMENT IN PRIVATE SCHOOLS BY REGION, 2003/2004

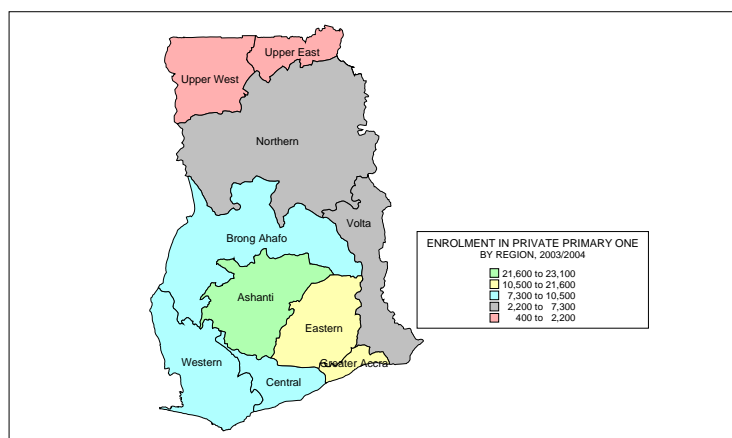


Table 3.2.5 Gross Admission Ratios in primary schools by region and sex, 2003/2004

REGION	GROSS ADMISSION RATIOS IN PRIMARY SCHOOLS								
	BOYS			GIRLS			TOTAL		
	Pop. 6yrs	P1 Enrol.	GER	Pop. 6yrs	P1 Enrol.	GER	Pop. 6yrs	P1 Enrol.	GER
Ashanti	59,353	49,157	82.8	58,149	46,866	80.6	117,502	96,023	81.7
Brong Ahafo	30,161	28,673	95.1	30,257	27,119	89.6	60,418	55,792	92.3
Central	26,662	24,996	93.8	26,983	24,233	89.8	53,645	49,229	91.8
Eastern	33,992	33,391	98.2	33,630	31,924	94.9	67,622	65,315	96.6
Greater Accra	35,681	26,038	73.0	36,503	25,706	70.4	72,184	51,744	71.7
Northern	35,912	32,918	91.7	36,801	30,938	84.1	72,713	63,856	87.8
Upper East	17,579	19,273	109.6	17,144	18,341	107.0	34,723	37,614	108.3
Upper West	11,090	11,532	104.0	10,798	11,236	104.1	21,888	22,768	104.0
Volta	26,919	24,688	91.7	27,347	23,110	84.5	54,266	47,798	88.1
Western	32,598	28,398	87.1	32,570	27,054	83.1	65,168	55,452	85.1
Total	309,947	279,064	90.0	310,182	266,527	85.9	620,129	545,591	88.0

MAP 3.2.5a: GROSS ADMISSION RATIOS FOR PUPILS IN PRIMARY SCHOOLS, BY REGION, 2003/2004

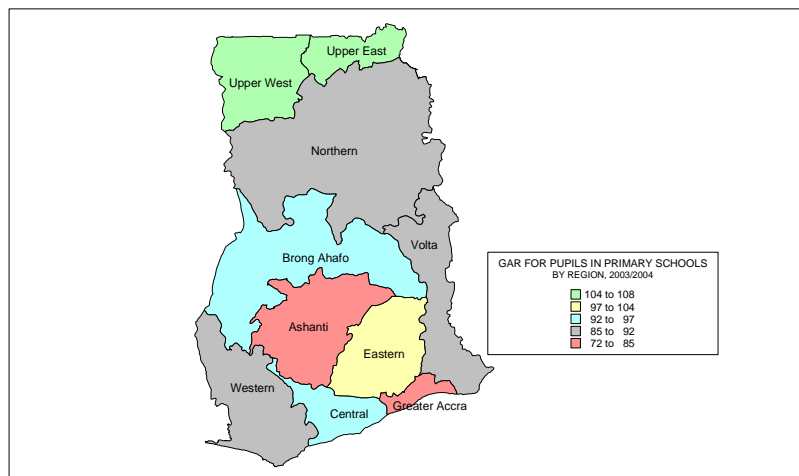
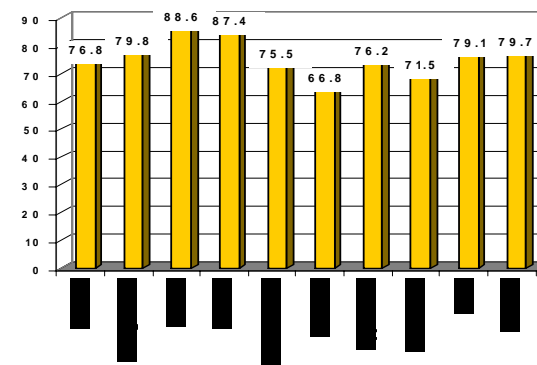


Chart 3.2.5a GROSS ADMISSION RATIO IN PRIMARY SCHOOLS BY REGION 2003/2004



MAP 3.2.5b: GROSS ADMISSION RATIOS FOR GIRLS IN PRIMARY SCHOOLS BY REGION, 2003/2004

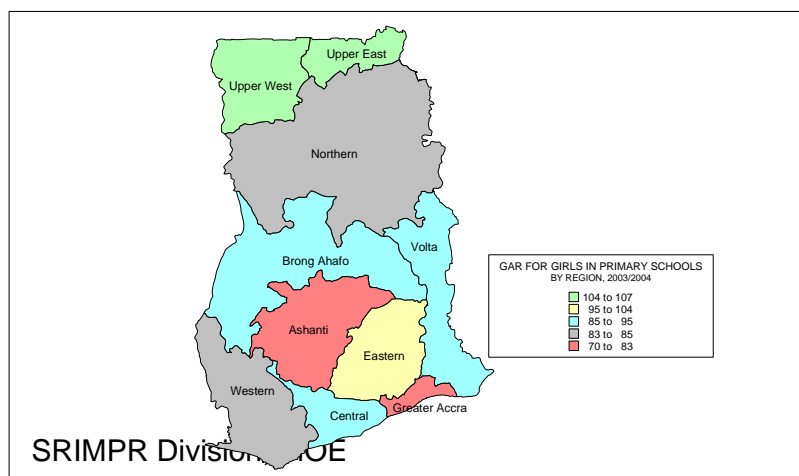


Chart 3.2.5b GROSS ADMISSION RATIO FOR GIRLS IN PRIMARY SCHOOLS BY REGION 2003/2004

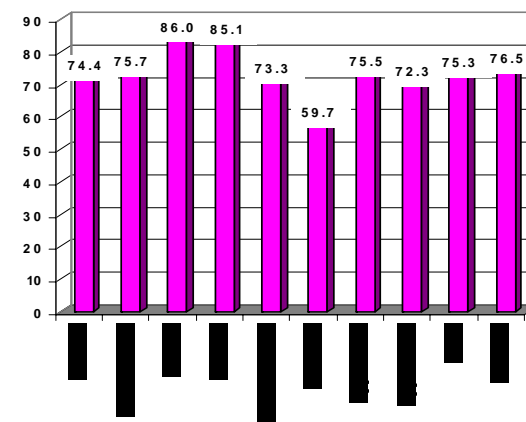


Table 3.2.6 Percentage of Girls Enrolment in primary schools by region, 2003/2004

REGION	PERCENTAGE OF GIRLS ENROLMENT IN PRIMARY SCHOOLS								
	PUBLIC			PRIVATE			TOTAL		
	Girls Enr.	Total Enr.	% Girls	Girls Enr.	Total Enr.	% Girls	Girls Enr.	Total Enr.	% Girls
Ashanti	179,897	374,983	48.0	62,440	127,455	49.0	242,337	502,438	48.2
Brong Ahafo	107,858	229,735	46.9	18,386	38,508	47.7	126,244	268,243	47.1
Central	105,220	219,199	48.0	24,135	48,965	49.3	129,355	268,164	48.2
Eastern	134,807	283,083	47.6	26,685	54,926	48.6	161,492	338,009	47.8
Greater Accra	95,093	188,544	50.4	63,667	128,984	49.4	158,760	317,528	50.0
Northern	104,008	235,989	44.1	3,157	6,601	47.8	107,165	242,590	44.2
Upper East	65,276	137,135	47.6	1,948	3,974	49.0	67,224	141,109	47.6
Upper West	39,501	80,551	49.0	864	1,807	47.8	40,365	82,358	49.0
Volta	100,079	212,261	47.1	12,878	27,139	47.5	112,957	239,400	47.2
Western	111,807	235,294	47.5	24,514	51,000	48.1	136,321	286,294	47.6
Total	1,043,546	2,196,774	47.5	238,674	489,359	48.8	1,282,220	2,686,133	47.7

MAP 3.2.6a: PERCENTAGE OF GIRLS ENROLMENT IN PUBLIC PRIMARY SCHOOLS BY REGION, 2003/2004

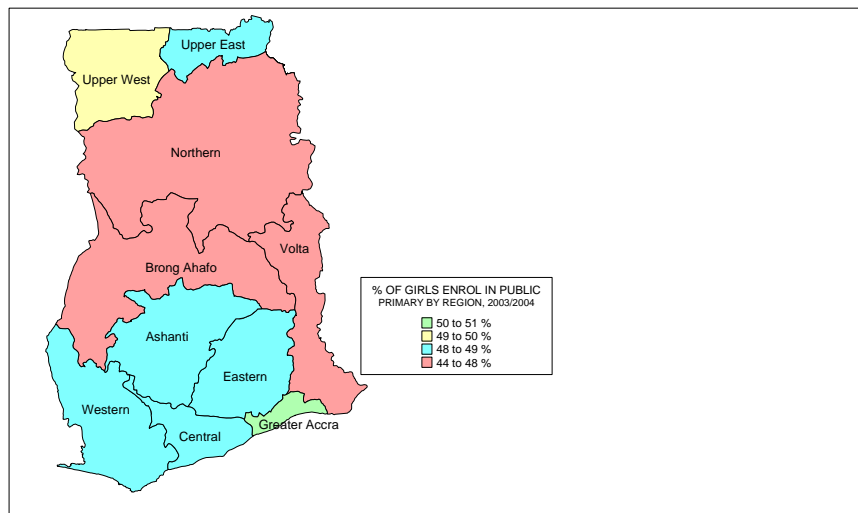


Chart 3.2.6a PERCENTAGE OF GIRLS ENROLMENT IN PUBLIC PRIMARY SCHOOLS BY REGION 2003/2004

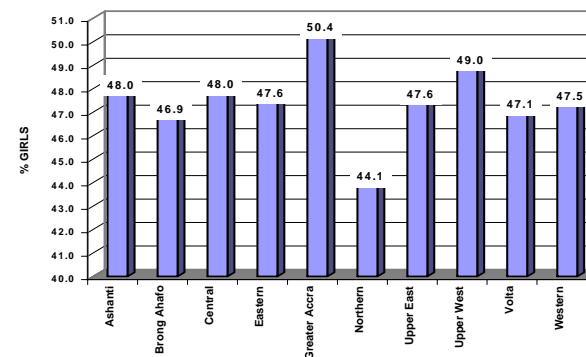
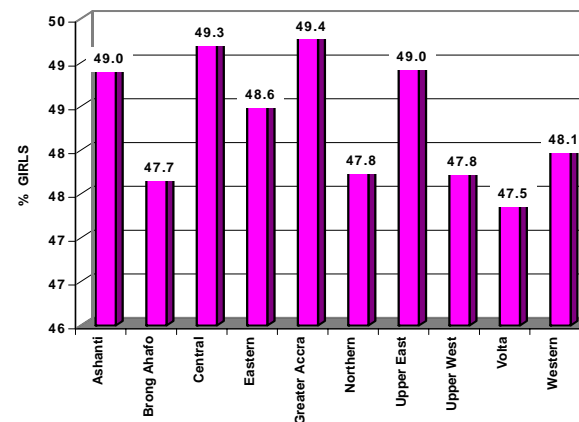


Chart 3.2.6b PERCENTAGE OF GIRLS ENROLMENT IN PRIVATE PRIMARY SCHOOLS BY REGION 2003/2004



MAP 3.2.6b: PERCENTAGE OF GIRLS ENROLMENT IN PRIVATE PRIMARY SCHOOLS BY REGION, 2003/2004

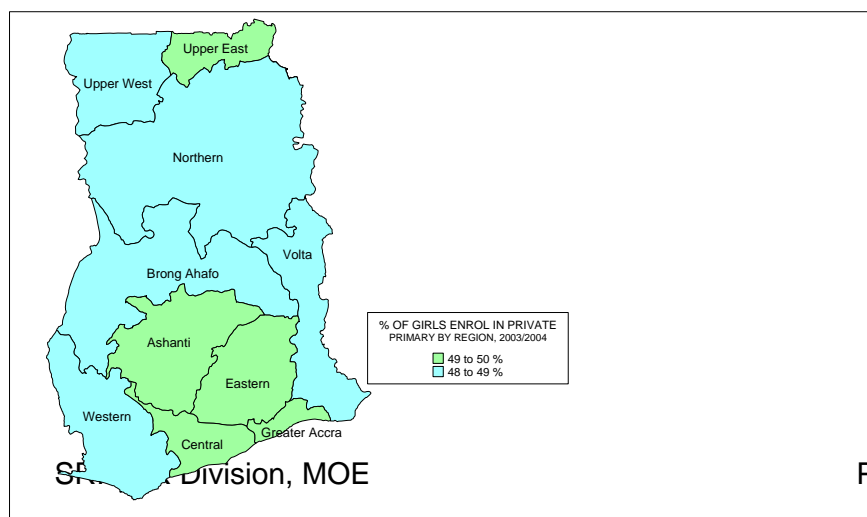
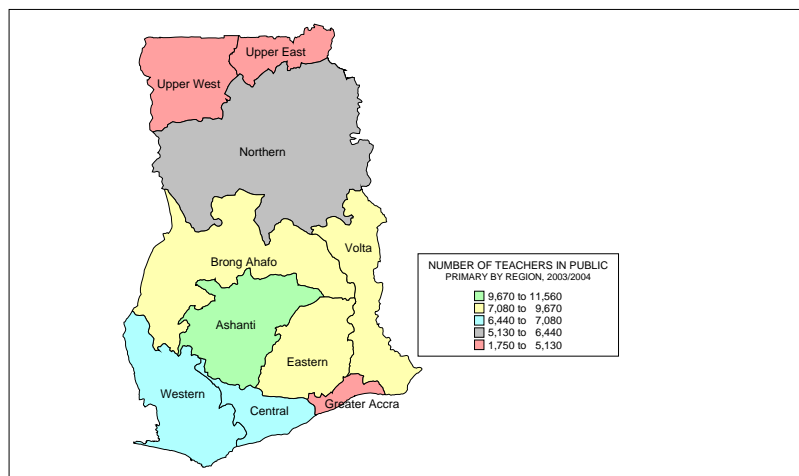


Table 3.2.7 Number of teachers in primary schools by type of education and region, 2003/2004

REGION	NUMBER OF TEACHERS			NUMBER OF TRAINED TEACHERS		
	Public	Private	Total	Public	Private	Total
Ashanti	11,551	4,601	16,152	9,099	653	9,752
Brong Ahafo	7,664	1,436	9,100	4,859	149	5,008
Central	6,444	1,821	8,265	4,403	208	4,611
Eastern	9,667	2,203	11,870	7,714	314	8,028
Greater Accra	5,128	4,845	9,973	4,970	1,088	6,058
Northern	6,113	215	6,328	3,186	49	3,235
Upper East	2,326	126	2,452	1,741	35	1,776
Upper West	1,751	67	1,818	1,349	17	1,366
Volta	7,080	1,075	8,155	6,283	115	6,398
Western	6,907	1,813	8,720	4,120	185	4,305
Total	64,631	18,202	82,833	47,724	2,813	50,537

MAP 3.2.7a: NUMBER OF TEACHERS IN PUBLIC PRIMARY SCHOOLS BY REGION, 2003/2004



MAP 3.2.7b: NUMBER OF TEACHERS IN PRIVATE PRIMARY SCHOOLS BY REGION, 2003/2004

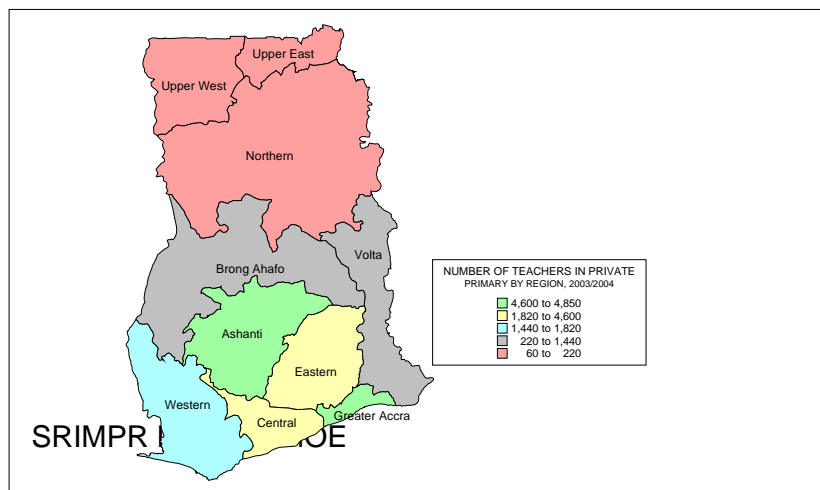


Chart 3.2.7 NUMBER OF TEACHERS IN PRIMARY SCHOOLS BY TYPE OF EDUCATION AND REGION 2003/2004

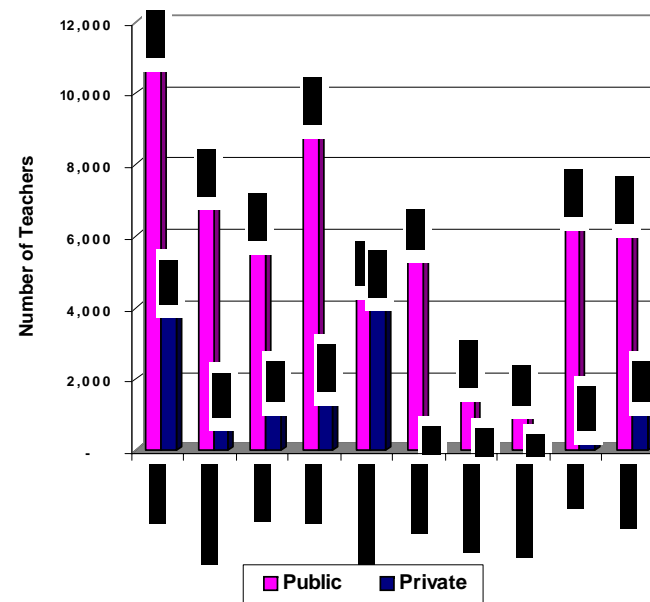


Table 3.2.8 Percentage of trained teachers in primary schools by type of education and region, 2003/2004

REGION	PERCENTAGE OF TRAINED TEACHERS		
	Public	Private	Total
Ashanti	78.8	14.2	60.4
Brong Ahafo	63.4	10.4	55.0
Central	68.3	11.4	55.8
Eastern	79.8	14.3	67.6
Greater Accra	96.9	22.5	60.7
Northern	52.1	22.8	51.1
Upper East	74.8	27.8	72.4
Upper West	77.0	25.4	75.1
Volta	88.7	10.7	78.5
Western	59.6	10.2	49.4
Total	73.8	15.5	61.0

MAP 3.2.8a: PERCENTAGE OF TRAINED TEACHERS IN PUBLIC PRIMARY SCHOOLS BY REGION, 2003/2004

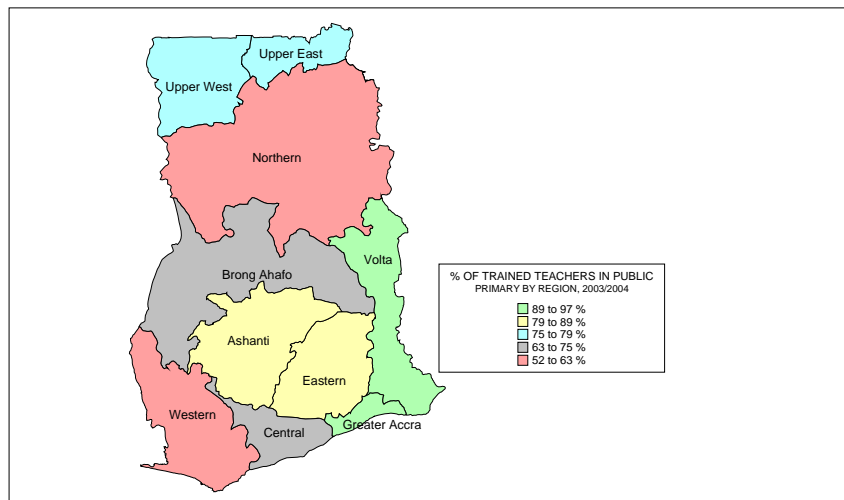
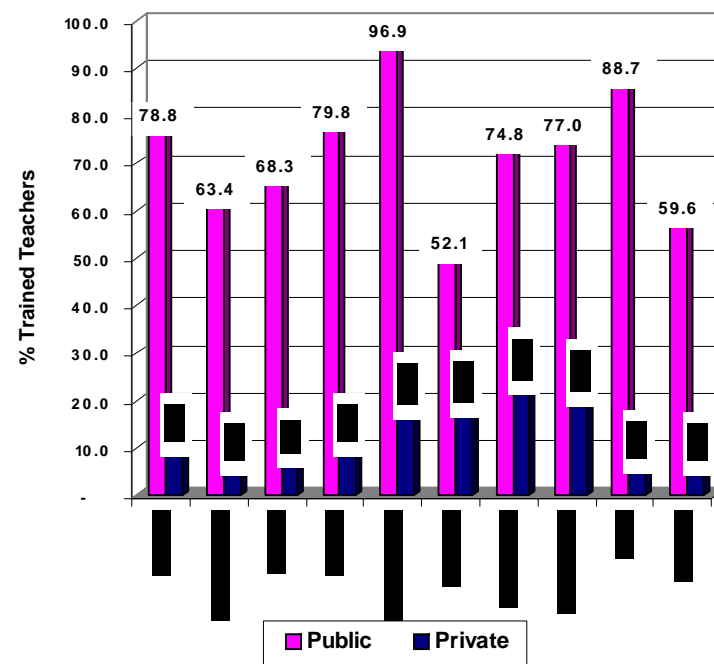


Chart 3.2.8 PERCENTAGE OF TRAINED TEACHERS IN PRIMARY SCHOOLS BY TYPE OF EDUCATION AND REGION 2003/2004



MAP 3.2.8b: PERCENTAGE OF TRAINED TEACHERS IN PRIVATE PRIMARY SCHOOLS BY REGION, 2003/2004

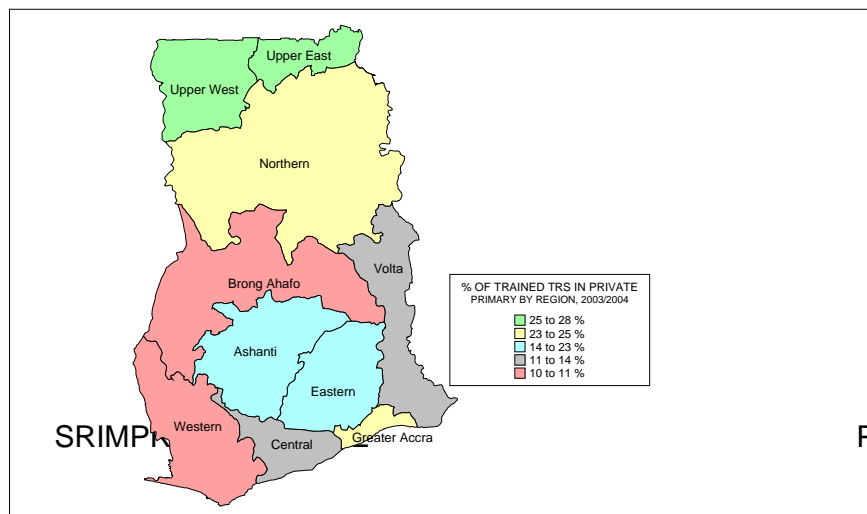


Table 3.2.9 Pupil-Teacher Ratio in primary schools by type of education and region, 2003/2004

REGION	PUPIL/TEACHER RATIOS								
	PUBLIC			PRIVATE			TOTAL		
	Enrol.	Teachers	P/T Ratio	Enrol.	Teachers	P/T Ratio	Enrol.	Teachers	P/T Ratio
Ashanti	374,983	11,551	32.5	127,455	4,601	27.7	502,438	16,152	31.1
Brong Ahafo	229,735	7,664	30.0	38,508	1,436	26.8	268,243	9,100	29.5
Central	219,199	6,444	34.0	48,965	1,821	26.9	268,164	8,265	32.4
Eastern	283,083	9,667	29.3	54,926	2,203	24.9	338,009	11,870	28.5
Greater Accra	188,544	5,128	36.8	128,984	4,845	26.6	317,528	9,973	31.8
Northern	235,989	6,113	38.6	6,601	215	30.7	242,590	6,328	38.3
Upper East	137,135	2,326	59.0	3,974	126	31.5	141,109	2,452	57.5
Upper West	80,551	1,751	46.0	1,807	67	27.0	82,358	1,818	45.3
Volta	212,261	7,080	30.0	27,139	1,075	25.2	239,400	8,155	29.4
Western	235,294	6,907	34.1	51,000	1,813	28.1	286,294	8,720	32.8
Total	2,196,774	64,631	34.0	489,359	18,202	26.9	2,686,133	82,833	32.4

MAP 3.2.9a: PUPIL-TEACHER RATIOS IN PUBLIC PRIMARY SCHOOLS BY REGION, 2003/2004

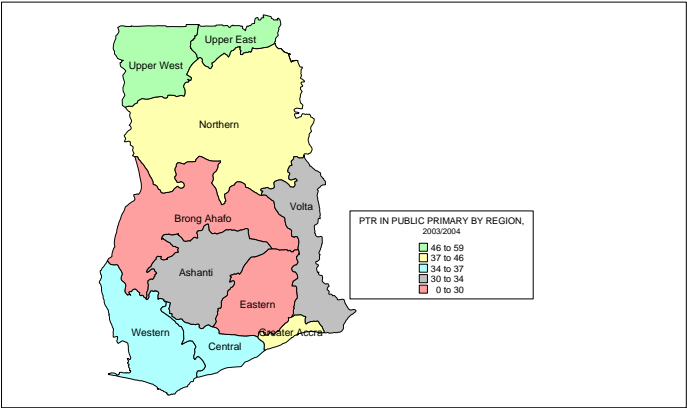
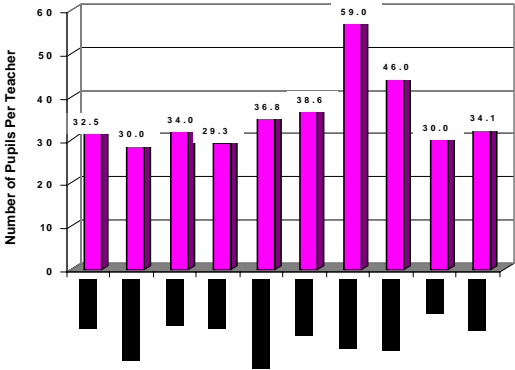


Chart 3.2.9a PUPIL/TEACHER RATIO IN PUBLIC PRIMARY SCHOOLS BY REGION 2003/2004



MAP 3.2.9b: PUPIL-TEACHER RATIOS IN PRIVATE PRIMARY SCHOOLS BY REGION, 2003/2004

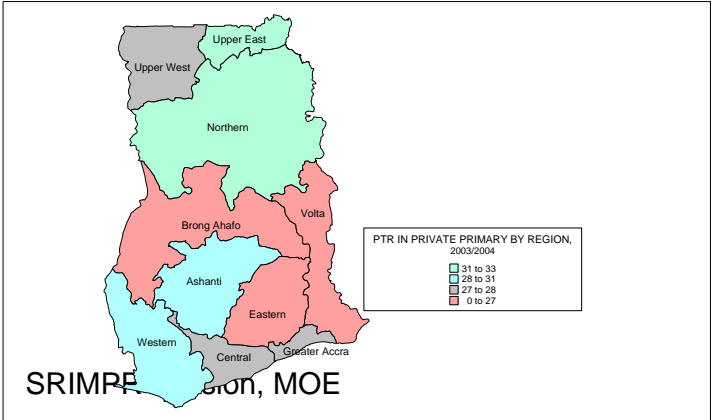
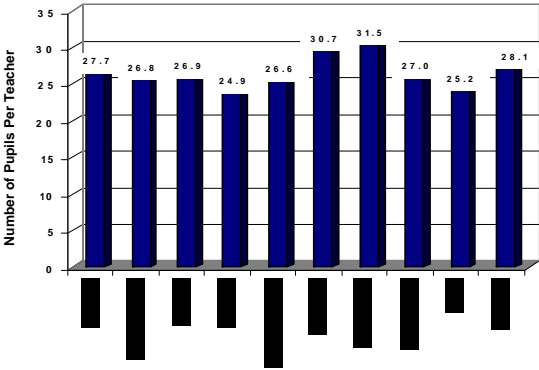


Chart 3.2.9b PUPIL/TEACHER RATIO IN PRIVATE PRIMARY SCHOOLS BY REGION 2003/2004



PART 3.3

SUMMARY TABLES, MAPS AND CHARTS FOR JUNIOR SECONDARY SCHOOLS

3.3 SUMMARY TABLES, CHARTS AND MAPS FOR JUNIOR SECONDARY SCHOOLS

Table 3.3.1 Number of junior secondary schools by type of education and region, 2003/2004

REGION	NUMBER OF JSS		
	Public	Private	Total
Ashanti	1,056	321	1,377
Brong Ahafo	714	81	795
Central	834	130	964
Eastern	1,008	153	1,161
Greater Accra	510	379	889
Northern	336	11	347
Upper East	198	6	204
Upper West	229	9	238
Volta	733	79	812
Western	686	153	839
Total	6,304	1,322	7,626

MAP 3.3.1a: NUMBER OF PUBLIC JUNIOR SECONDARY SCHOOLS BY REGION, 2003/2004

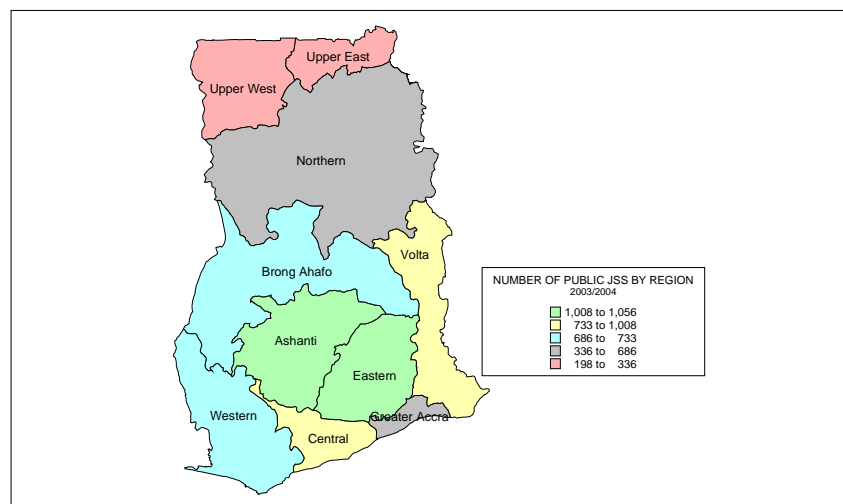
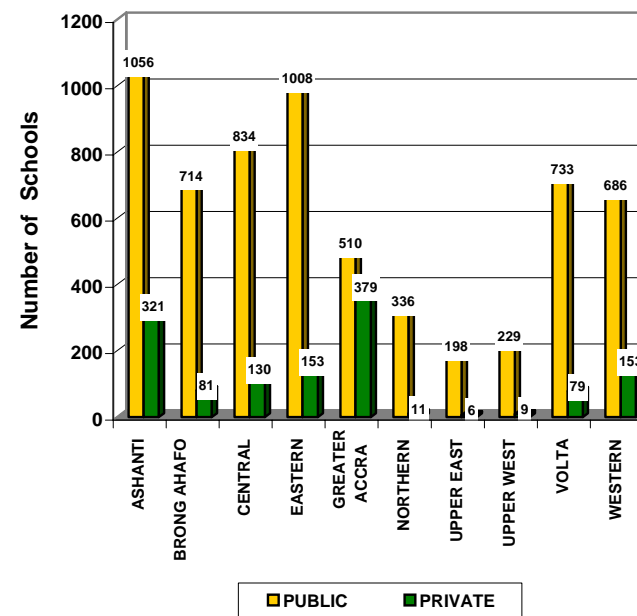


Chart 3.3.1 NUMBER OF JUNIOR SECONDARY SCHOOLS BY TYPE OF EDUCATION AND REGION 2003/2004



MAP 3.3.1b: NUMBER OF PRIVATE JUNIOR SECONDARY SCHOOLS BY REGION, 2003/2004

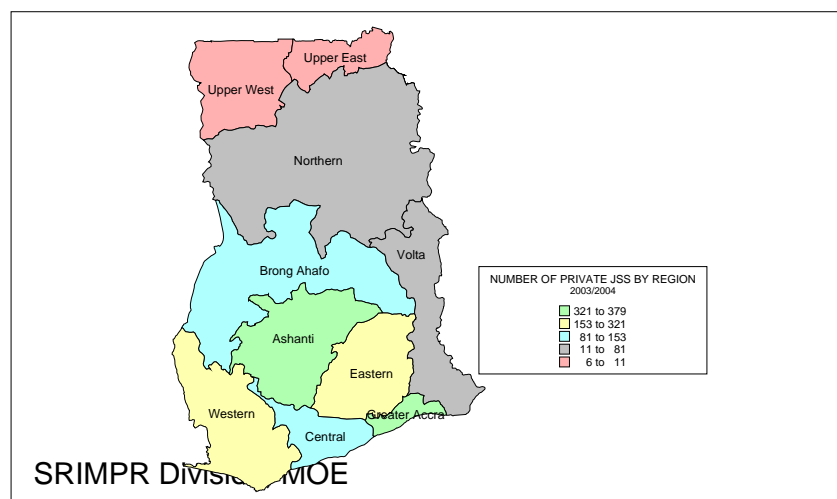
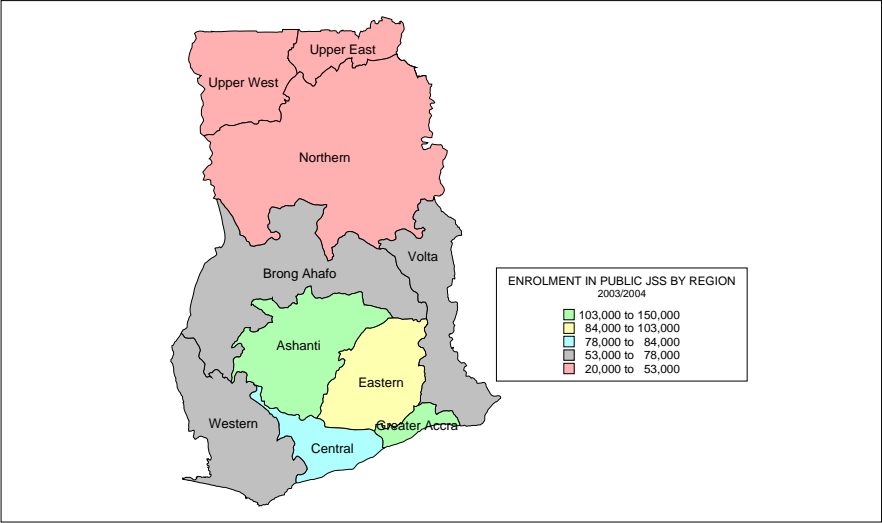


Table 3.3.2 Enrolment in junior secondary schools by type of education, region and sex, 2003/2004

REGION	ENROLMENT IN JUNIOR SECONDARY SCHOOLS								
	PUBLIC			PRIVATE			TOTAL		
	Boys	Girls	Total	Boys	Girls	Total	Boys	Girls	Total
Ashanti	80,714	68,669	149,383	19,837	18,450	38,287	100,551	87,119	187,670
Brong Ahafo	42,651	33,885	76,536	4,633	4,048	8,681	47,284	37,933	85,217
Central	45,666	38,002	83,668	6,819	6,416	13,235	52,485	44,418	96,903
Eastern	56,090	46,487	102,577	7,014	6,398	13,412	63,104	52,885	115,989
Greater Accra	51,973	51,937	103,910	23,486	23,567	47,053	75,459	75,504	150,963
Northern	34,032	18,942	52,974	379	520	899	34,411	19,462	53,873
Upper East	16,630	13,710	30,340	316	347	663	16,946	14,057	31,003
Upper West	11,082	8,948	20,030	333	315	648	11,415	9,263	20,678
Volta	42,578	34,199	76,777	4,066	3,713	7,779	46,644	37,912	84,556
Western	42,527	35,260	77,787	7,960	6,735	14,695	50,487	41,995	92,482
Total	423,943	350,039	773,982	74,843	70,509	145,352	498,786	420,548	919,334

MAP 3.3.2a: ENROLMENT IN PUBLIC JUNIOR SECONDARY SCHOOLS BY REGION, 2003/2004



MAP 3.3.2b: ENROLMENT IN PRIVATE JUNIOR SECONDARY SCHOOLS BY REGION, 2003/2004

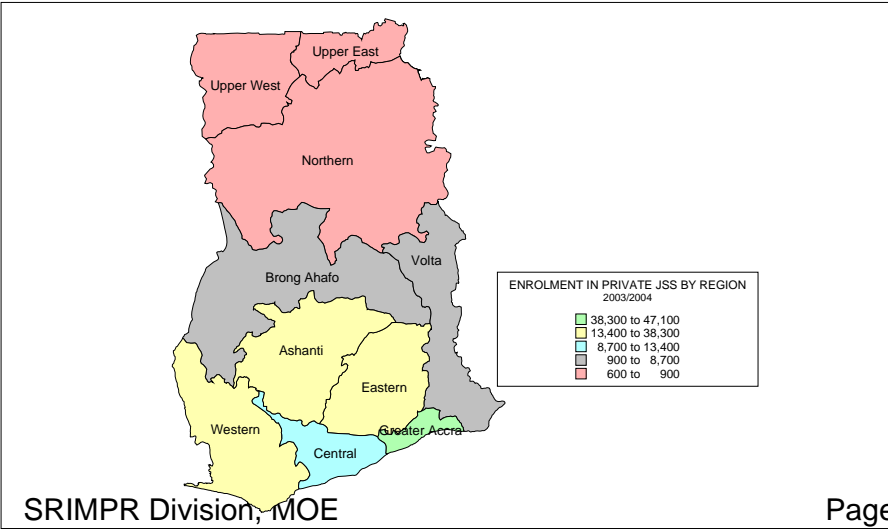


Chart 3.3.2 JUNIOR SECONDARY SCHOOLS ENROLMENT BY TYPE OF EDUCATION AND REGION 2003/2004

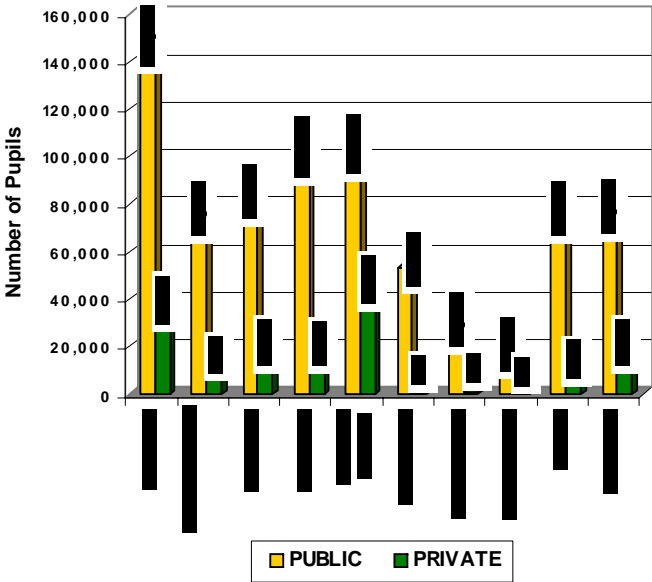


Table 3.3.3 Gross Enrolment Ratios in junior secondary schools by region and sex, 2003/2004

REGION	GROSS ENROLMENT RATIOS IN JSS								
	BOYS			GIRLS			TOTAL		
	Pop. 12-14yrs	JS1-3 Enrol.	GER	Pop. 12-14yrs	JS1-3 Enrol.	GER	Pop. 12-14yrs	JS1-3 Enrol.	GER
Ashanti	135,199	100,551	74.4	136,742	87,119	63.7	271,941	187,670	69.0
Brong Ahafo	72,435	47,284	65.3	68,248	37,933	55.6	140,683	85,217	60.6
Central	65,085	52,485	80.6	61,016	44,418	72.8	126,101	96,903	76.8
Eastern	87,078	63,104	72.5	79,435	52,885	66.6	166,513	115,989	69.7
Greater Accra	95,009	75,459	79.4	107,153	75,504	70.5	202,162	150,963	74.7
Northern	64,276	34,411	53.5	54,335	19,462	35.8	118,611	53,873	45.4
Upper East	36,035	16,946	47.0	30,321	14,057	46.4	66,356	31,003	46.7
Upper West	21,870	11,415	52.2	19,201	9,263	48.2	41,071	20,678	50.3
Volta	65,079	46,644	71.7	59,586	37,912	63.6	124,665	84,556	67.8
Western	73,755	50,487	68.5	70,023	41,995	60.0	143,778	92,482	64.3
Total	715,821	498,786	69.7	686,060	420,548	61.3	1,401,881	919,334	65.6

MAP 3.3.3a: GROSS ENROLMENT RATIOS IN JUNIOR SECONDARY SCHOOLS BY REGION, 2003/2004

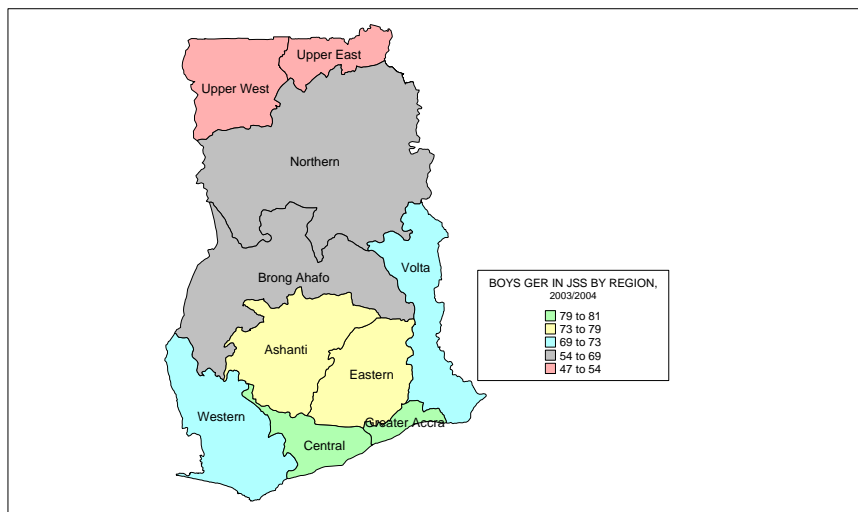


Chart 3.3.3a GROSS ENROLMENT RATIO FOR JUNIOR SECONDARY SCHOOLS BY REGION 2003/2004

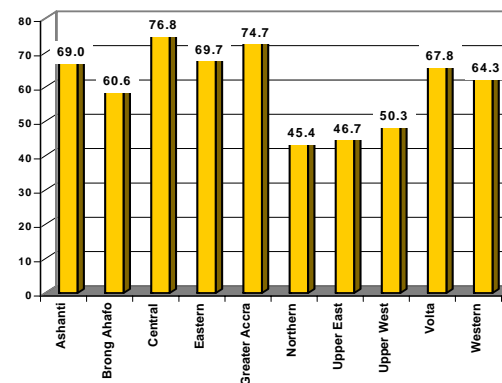
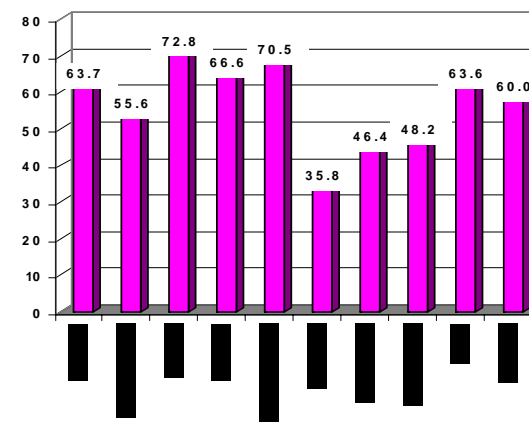


Chart 3.3.3b GROSS ENROLMENT RATIO FOR GIRLS IN JUNIOR SECONDARY SCHOOLS BY REGION 2003/2004



MAP 3.3.3b: GROSS ENROLMENT RATIOS FOR GIRLS IN JUNIOR SECONDARY SCHOOLS BY REGION. 2003/2004

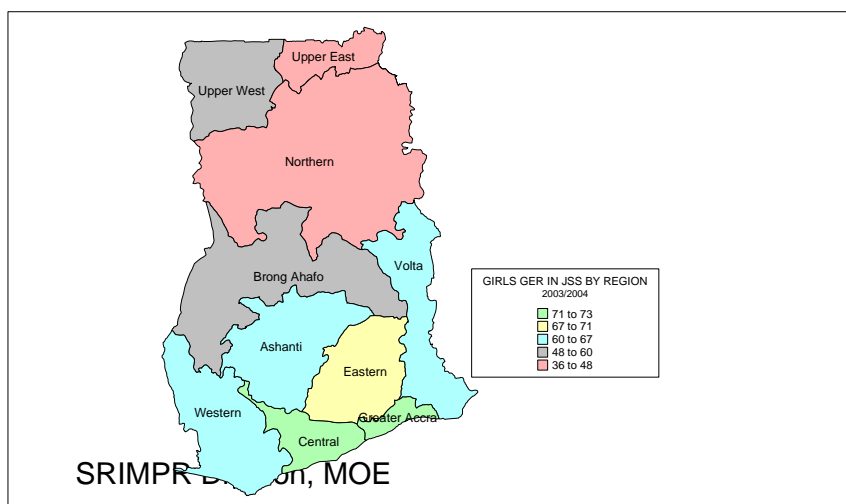


Table 3.3.4 Enrolment in JS1 by type of education, region and sex, 2003/2004

REGION	ENROLMENT IN JS1								
	PUBLIC			PRIVATE			TOTAL		
	Boys	Girls	Total	Boys	Girls	Total	Boys	Girls	Total
Ashanti	29,906	26,143	56,049	7,659	7,273	14,932	37,565	33,416	70,981
Brong Ahafo	16,528	13,852	30,380	1,809	1,634	3,443	18,337	15,486	33,823
Central	16,737	14,640	31,377	2,744	2,557	5,301	19,481	17,197	36,678
Eastern	20,717	17,500	38,217	2,855	2,615	5,470	23,572	20,115	43,687
Greater Accra	18,663	18,533	37,196	8,514	8,494	17,008	27,177	27,027	54,204
Northern	12,644	7,316	19,960	199	238	437	12,843	7,554	20,397
Upper East	6,092	5,251	11,343	165	192	357	6,257	5,443	11,700
Upper West	4,101	3,458	7,559	171	146	317	4,272	3,604	7,876
Volta	15,425	12,790	28,215	1,524	1,510	3,034	16,949	14,300	31,249
Western	16,054	13,660	29,714	3,338	2,808	6,146	19,392	16,468	35,860
Total	156,867	133,143	290,010	28,978	27,467	56,445	185,845	160,610	346,455

MAP 3.3.4a: JS1 ENROLMENT IN PUBLIC JUNIOR SECONDARY SCHOOLS BY REGION. 2003/2004

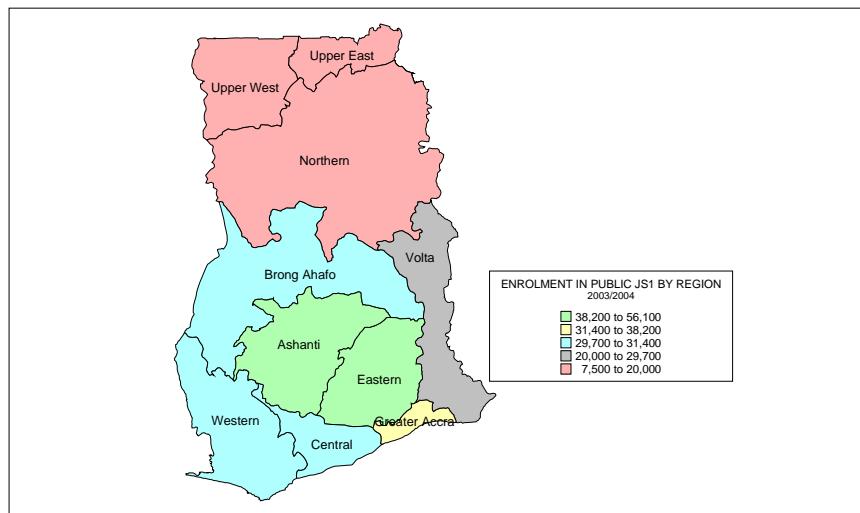
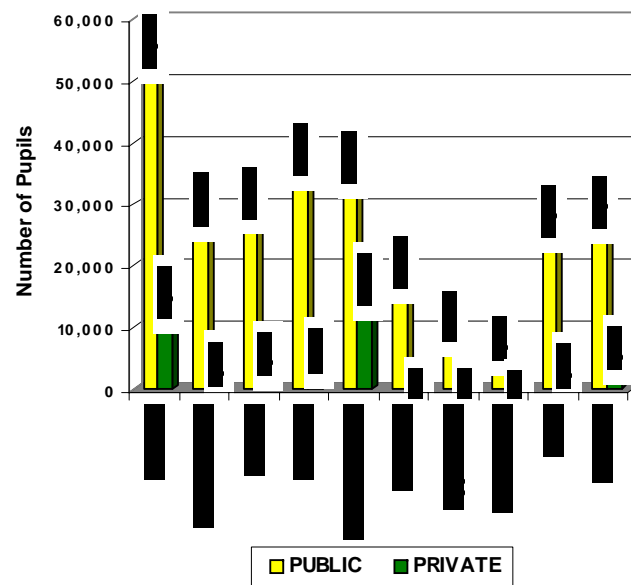


Chart 3.3.4 ENROLMENT IN JS ONE BY TYPE OF EDUCATION AND REGION 2003/2004



MAP 3.3.4b: JS1 ENROLMENT IN PRIVATE JUNIOR SECONDARY SCHOOLS BY REGION. 2003/2004

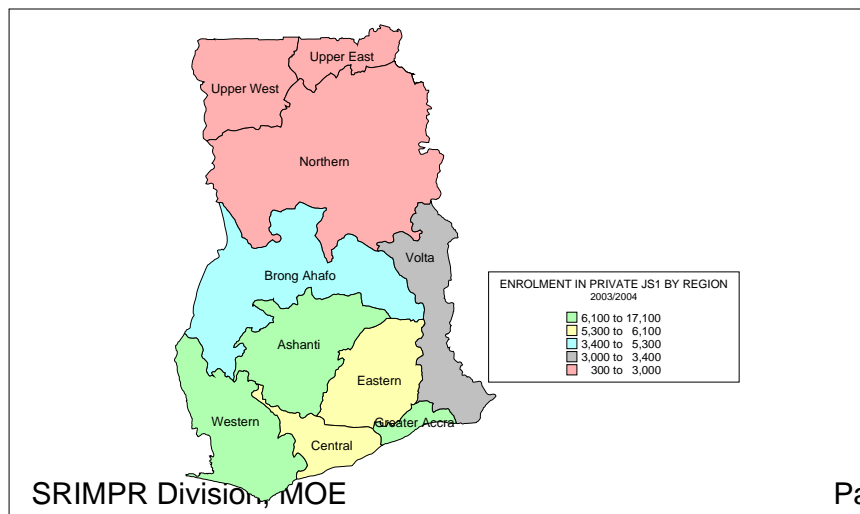


Table 3.3.5 Gross Admission Ratios in junior secondary schools by region and sex, 2003/2004

REGION	GROSS ADMISSION RATIOS IN JSS								
	BOYS			GIRLS			TOTAL		
	Pop. 12yrs	JS1 Enrol.	GAR	Pop. 12yrs	JS1 Enrol.	GAR	Pop. 12yrs	JS1 Enrol.	GAR
Ashanti	47,168	37,565	79.6	47,708	33,416	70.0	94,876	70,981	74.8
Brong Ahafo	24,921	18,337	73.6	23,799	15,486	65.1	48,720	33,823	69.4
Central	22,797	19,481	85.5	21,567	17,197	79.7	44,364	36,678	82.7
Eastern	30,270	23,572	77.9	27,875	20,115	72.2	58,145	43,687	75.1
Greater Accra	31,369	27,177	86.6	35,214	27,027	76.8	66,583	54,204	81.4
Northern	21,929	12,843	58.6	19,015	7,554	39.7	40,944	20,397	49.8
Upper East	12,639	6,257	49.5	10,617	5,443	51.3	23,256	11,700	50.3
Upper West	7,519	4,272	56.8	6,628	3,604	54.4	14,147	7,876	55.7
Volta	22,197	16,949	76.4	20,595	14,300	69.4	42,792	31,249	73.0
Western	25,655	19,392	75.6	24,637	16,468	66.8	50,292	35,860	71.3
Total	246,464	185,845	75.4	237,655	160,610	67.6	484,119	346,455	71.6

MAP 3.3.5a: GROSS ADMISSION RATIOS FOR JUNIOR SECONDARY SCHOOLS BY REGION, 2002/2004

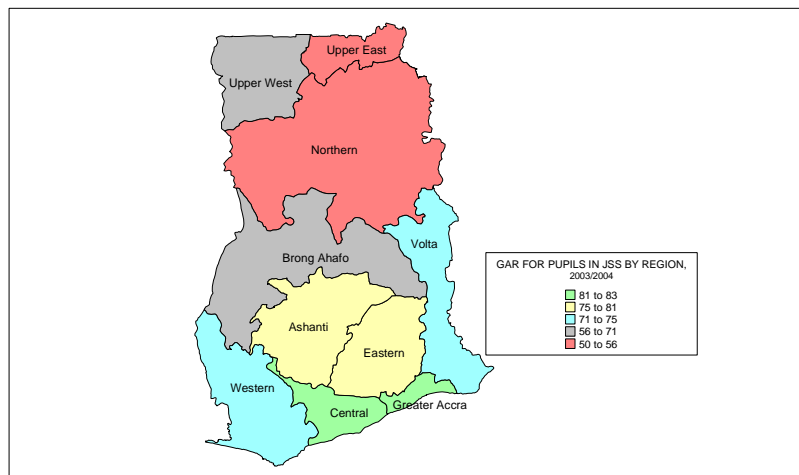
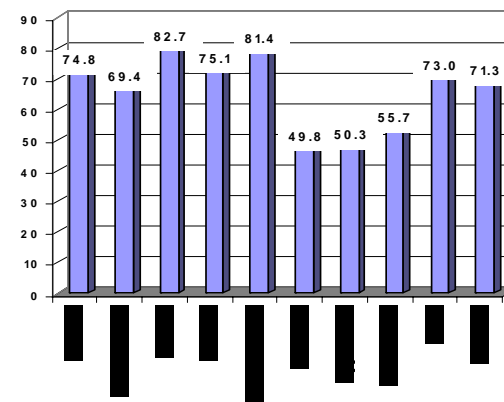


Chart 3.3.5a GROSS ADMISSION RATIO IN JUNIOR SECONDARY SCHOOLS BY REGION 2003/2004



MAP 3.3.5b: GROSS ADMISSION RATIOS FOR GIRLS IN JUNIOR SECONDARY SCHOOLS BY REGION, 2003/2004

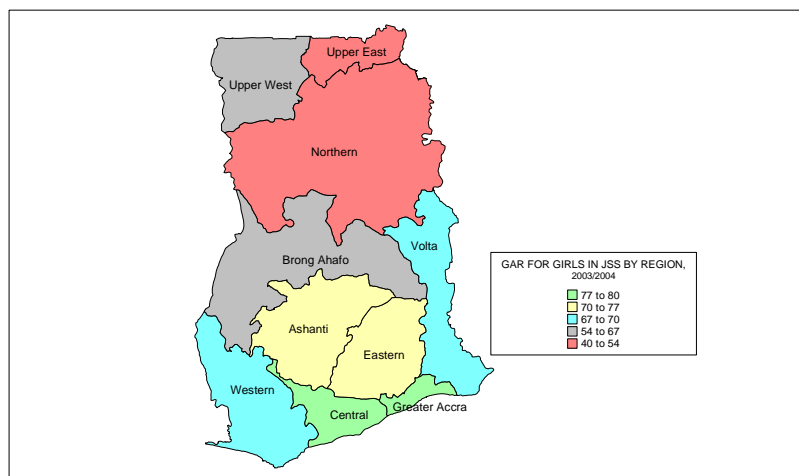


Chart 3.3.5b GROSS ADMISSION RATIO FOR GIRLS IN JUNIOR SECONDARY SCHOOLS BY REGION 2003/2004

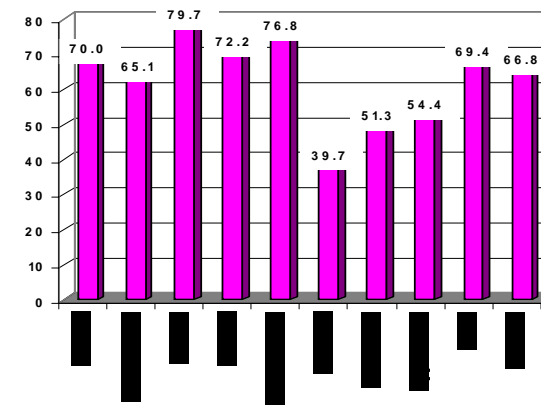


Table 3.3.6 Percentage of Girls Enrolment in junior secondary schools by region, 2003/2004

REGION	PERCENTAGE OF GIRLS ENROLMENT IN JSS								
	PUBLIC			PRIVATE			TOTAL		
	Girls Enr.	Total Enr.	% Girls	Girls Enr.	Total Enr.	% Girls	Girls Enr.	Total Enr.	% Girls
Ashanti	68,669	149,383	46.0	18,450	38,287	48.2	87,119	187,670	46.4
Brong Ahafo	33,885	76,536	44.3	4,048	8,681	46.6	37,933	85,217	44.5
Central	38,002	83,668	45.4	6,416	13,235	48.5	44,418	96,903	45.8
Eastern	46,487	102,577	45.3	6,398	13,412	47.7	52,885	115,989	45.6
Greater Accra	51,937	103,910	50.0	23,567	47,053	50.1	75,504	150,963	50.0
Northern	18,942	52,974	35.8	520	899	57.8	19,462	53,873	36.1
Upper East	13,710	30,340	45.2	347	663	52.3	14,057	31,003	45.3
Upper West	8,948	20,030	44.7	315	648	48.6	9,263	20,678	44.8
Volta	34,199	76,777	44.5	3,713	7,779	47.7	37,912	84,556	44.8
Western	35,260	77,787	45.3	6,735	14,695	45.8	41,995	92,482	45.4
Total	350,039	773,982	45.2	70,509	145,352	48.5	420,548	919,334	45.7

MAP 3.3.6a: PERCENTAGE OF GIRLS ENROLMENT IN PUBLIC JUNIOR SECONDARY SCHOOLS BY REGION, 2003/2004

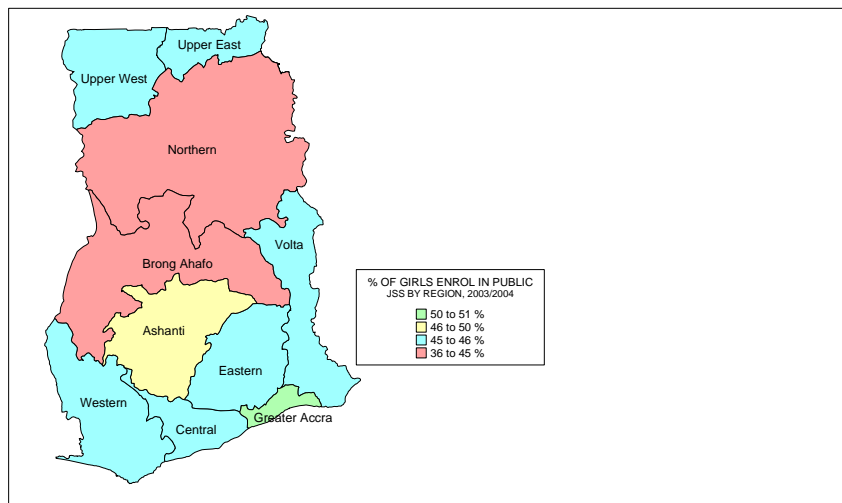
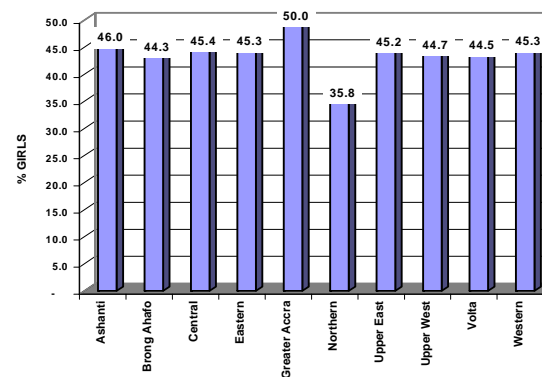


Chart 3.3.6a PERCENTAGE OF GIRLS ENROLMENT IN PUBLIC JUNIOR SECONDARY SCHOOLS BY REGION 2003/2004



MAP 3.3.6b: PERCENTAGE OF GIRLS ENROLMENT IN PRIVATE JUNIOR SECONDARY SCHOOLS BY REGION, 2003/2004

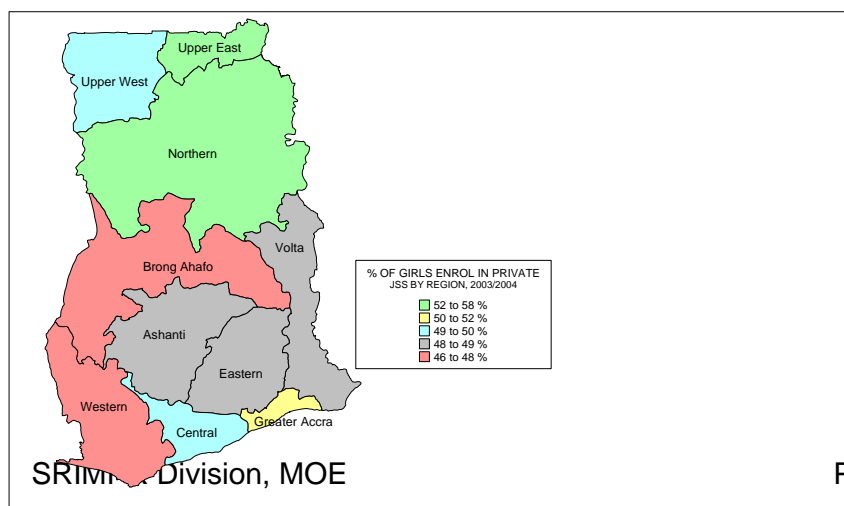


Chart 3.3.6b PERCENTAGE OF GIRLS ENROLMENT IN PRIVATE JUNIOR SECONDARY SCHOOLS BY REGION 2003/2004

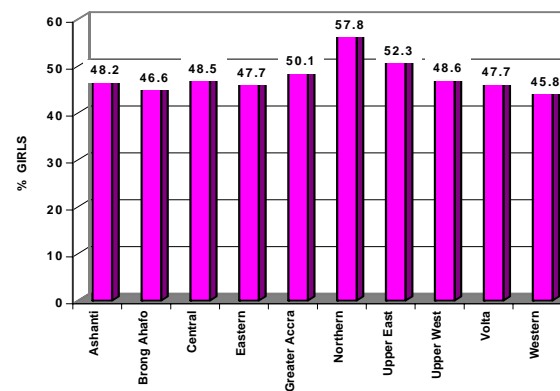


Table 3.3.7 Number of teachers in junior secondary schools by type of education and region, 2003/2004

REGION	NUMBER OF TEACHERS			NUMBER OF TRAINED TEACHERS		
	Public	Private	Total	Public	Private	Total
Ashanti	8,222	2,462	10,684	7,361	544	7,905
Brong Ahafo	4,563	519	5,082	3,643	94	3,737
Central	4,855	907	5,762	3,708	259	3,967
Eastern	6,154	929	7,083	5,100	248	5,348
Greater Accra	4,959	3,314	8,273	4,739	1,038	5,777
Northern	2,208	57	2,265	1,779	35	1,814
Upper East	1,208	21	1,229	913	11	924
Upper West	982	51	1,033	796	24	820
Volta	4,627	592	5,219	4,032	130	4,162
Western	3,875	914	4,789	3,005	153	3,158
Total	41,653	9,766	51,419	35,076	2,536	37,612

MAP 3.3.7a: NUMBER OF TEACHERS IN PUBLIC JUNIOR SECONDARY SCHOOLS BY REGION, 2003/2004

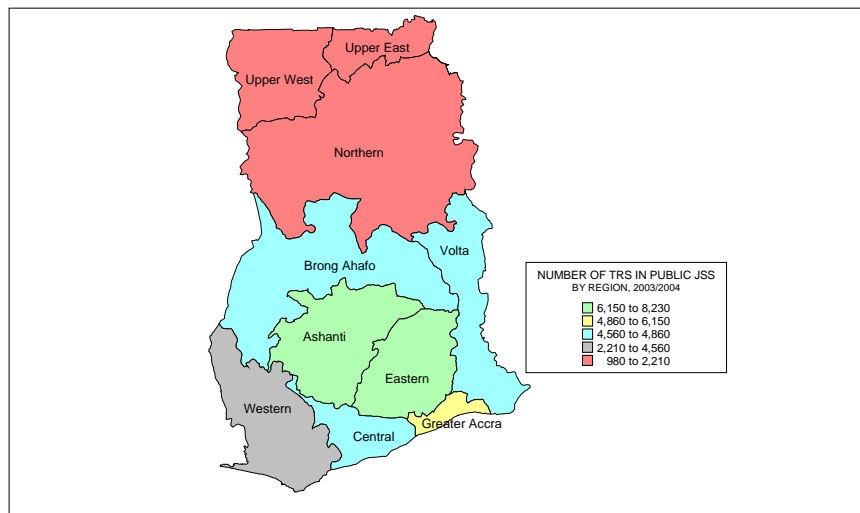
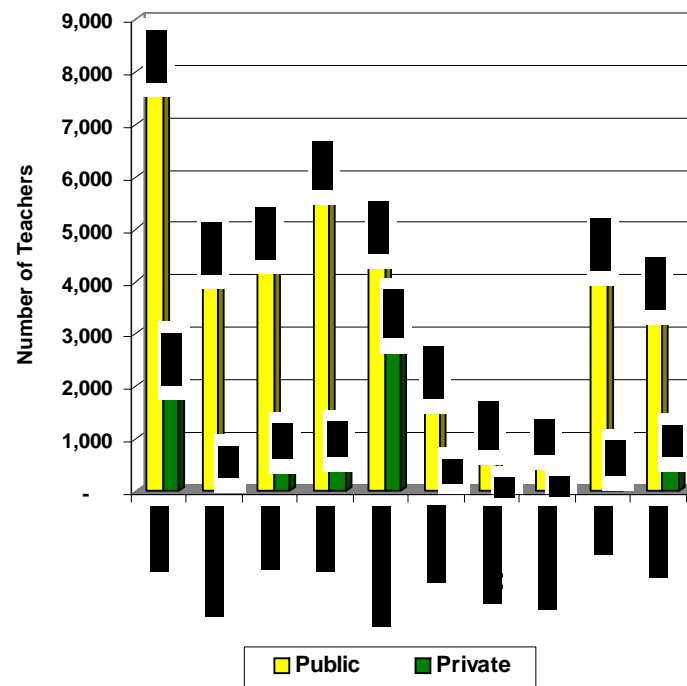


Chart 3.3.7 NUMBER OF TEACHERS IN JUNIOR SECONDARY SCHOOLS BY TYPE OF EDUCATION AND REGION 2003/2004



MAP 3.3.7b: NUMBER OF TEACHERS IN PRIVATE JUNIOR SECONDARY SCHOOLS BY REGION, 2003/2004

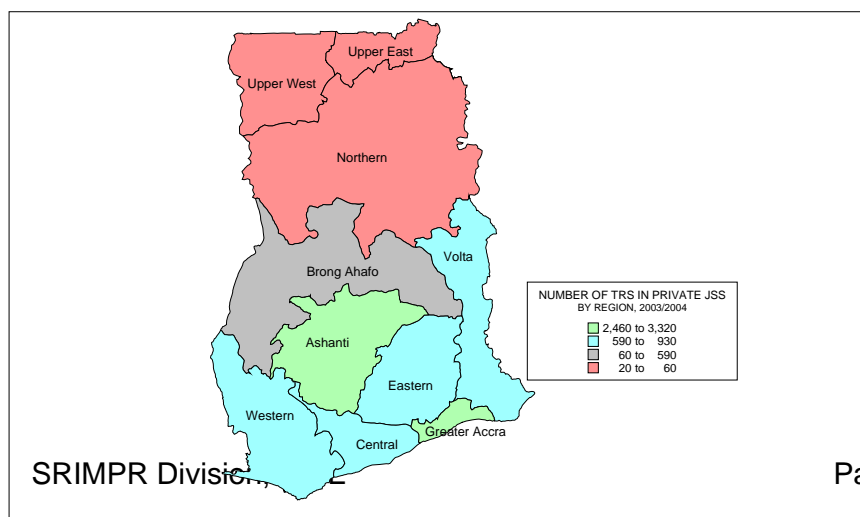


Table 3.3.8 Percentage of trained teachers in junior secondary schools by type of education and region, 2003/2004

REGION	PERCENTAGE OF TRAINED TEACHERS		
	Public	Private	Total
Ashanti	89.5	22.1	74.0
Brong Ahafo	79.8	18.1	73.5
Central	76.4	28.6	68.8
Eastern	82.9	26.7	75.5
Greater Accra	95.6	31.3	69.8
Northern	80.6	61.4	80.1
Upper East	75.6	52.4	75.2
Upper West	81.1	47.1	79.4
Volta	87.1	22.0	79.7
Western	77.5	16.7	65.9
Total	84.2	26.0	73.1

MAP 3.3.8a: PERCENTAGE OF TRAINED TEACHERS IN PUBLIC JUNIOR SECONDARY SCHOOLS BY REGION, 2003/2004

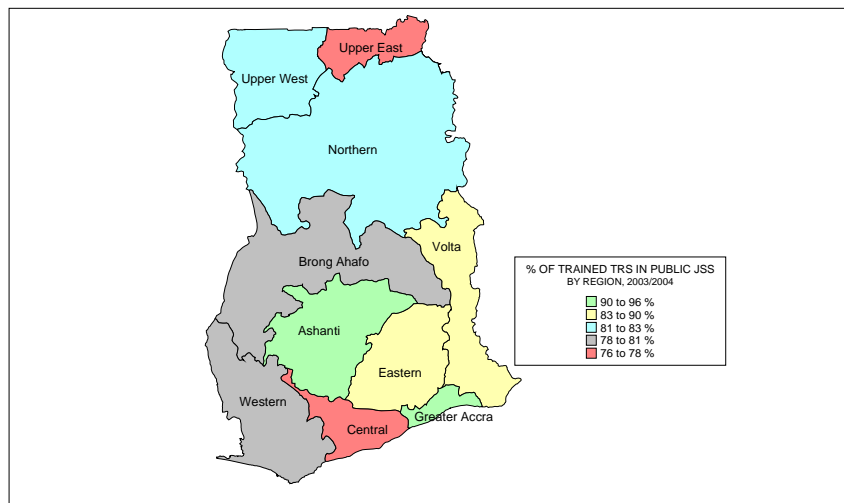
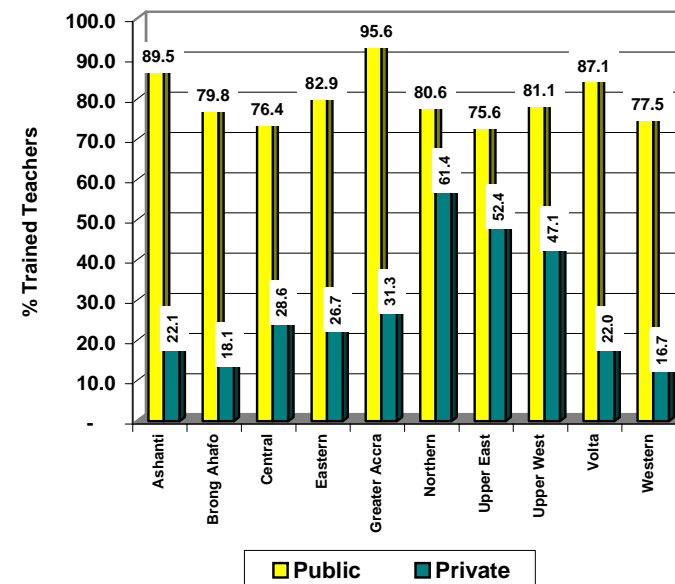


Chart 3.3.8 PERCENTAGE OF TRAINED TEACHERS IN JUNIOR SECONDARY SCHOOLS BY TYPE OF EDUCATION AND REGION 2003/2004



MAP 3.3.8b: PERCENTAGE OF TRAINED TEACHERS IN PRIVATE JUNIOR SECONDARY SCHOOLS BY REGION, 2003/2004

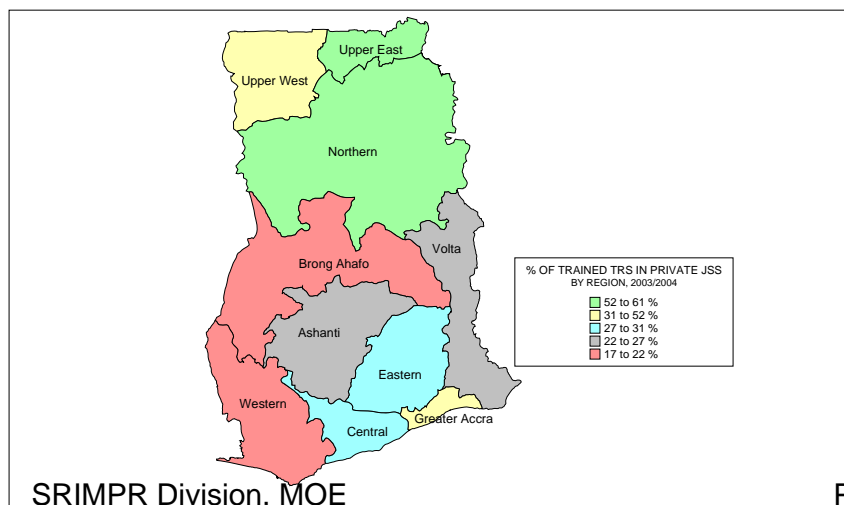


Table 3.3.9 Pupil-Teacher Ratios in junior secondary schools by type of education and region, 2003/2004

REGION	PUPIL/TEACHER RATIOS								
	PUBLIC			PRIVATE			TOTAL		
	Enrol.	Teachers	P/T Ratio	Enrol.	Teachers	P/T Ratio	Enrol.	Teachers	P/T Ratio
Ashanti	149,383	8,222	18.2	38,287	2,462	15.6	187,670	10,684	17.6
Brong Ahafo	76,536	4,563	16.8	8,681	519	16.7	85,217	5,082	16.8
Central	83,668	4,855	17.2	13,235	907	14.6	96,903	5,762	16.8
Eastern	102,577	6,154	16.7	13,412	929	14.4	115,989	7,083	16.4
Greater Accra	103,910	4,959	21.0	47,053	3,314	14.2	150,963	8,273	18.2
Northern	52,974	2,208	24.0	899	57	15.8	53,873	2,265	23.8
Upper East	30,340	1,208	25.1	663	21	31.6	31,003	1,229	25.2
Upper West	20,030	982	20.4	648	51	12.7	20,678	1,033	20.0
Volta	76,777	4,627	16.6	7,779	592	13.1	84,556	5,219	16.2
Western	77,787	3,875	20.1	14,695	914	16.1	92,482	4,789	19.3
Total	773,982	41,653	18.6	145,352	9,766	14.9	919,334	51,419	17.9

MAP 3.3.9a: PUPIL-TEACHER RATIOS IN PUBLIC JUNIOR SECONDARY SCHOOLS BY REGION, 2003/2004

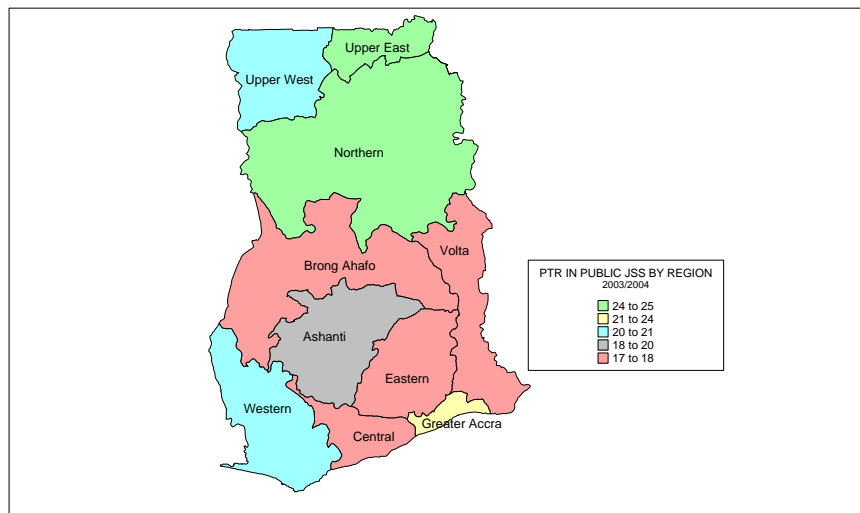
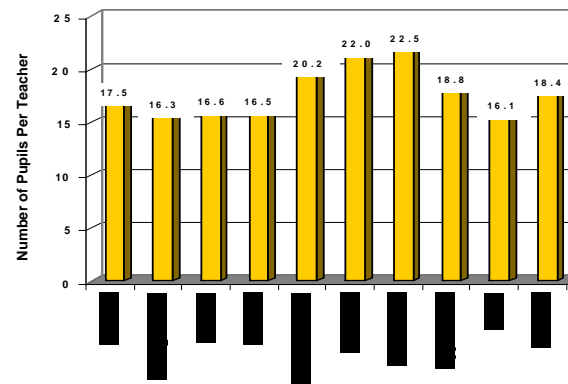


Chart 3.3.9a PUPIL/TEACHER RATIO IN PUBLIC JUNIOR SECONDARY SCHOOLS BY REGION 2003/2004



MAP 3.3.9b: PUPIL-TEACHER RATIOS IN PRIVATE JUNIOR SECONDARY SCHOOLS BY REGION, 2003/2004

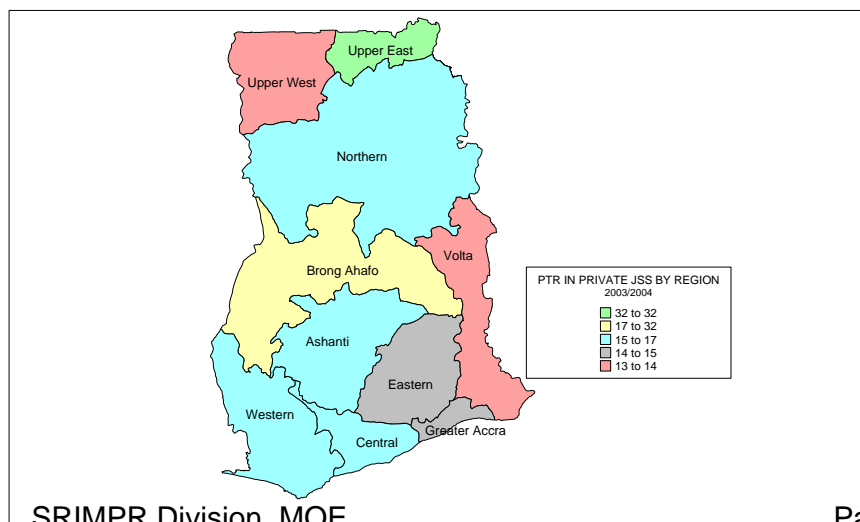


Chart 3.3.9b PUPIL/TEACHER RATIO IN PRIVATE JUNIOR SECONDARY SCHOOLS BY REGION 2003/2004

