

NZEMA EAST MUNICIPAL ASSEMBLY

IMPLEMENTATION OF MUNICIPAL MEDIUM-TERM DEVELOPMENT PLAN (2014-2017)

ANNUAL PROGRESS REPORT FOR 2016

**PREPARED BY:
MUNICIPAL PLANNING COORDINATING UNIT**

A SUMMARY OF NZEMA EAST MUNICIPAL PROFILE

The Nzema East Municipality is one of the existing twenty-two (22) MMDAs in the Western Region of Ghana. The municipality was created in 2008 when the Nzema East District was split into two districts, Nzema East Municipality and Ellembelle District by legislative instrument (L.I) 1917. The municipality has Axim as its capital and is located on the southern end of the region between longitudes 2.05° and 2.35° west and latitude 4.40° and 5.20°, north. This makes it one of the best destinations for tourism in the region.

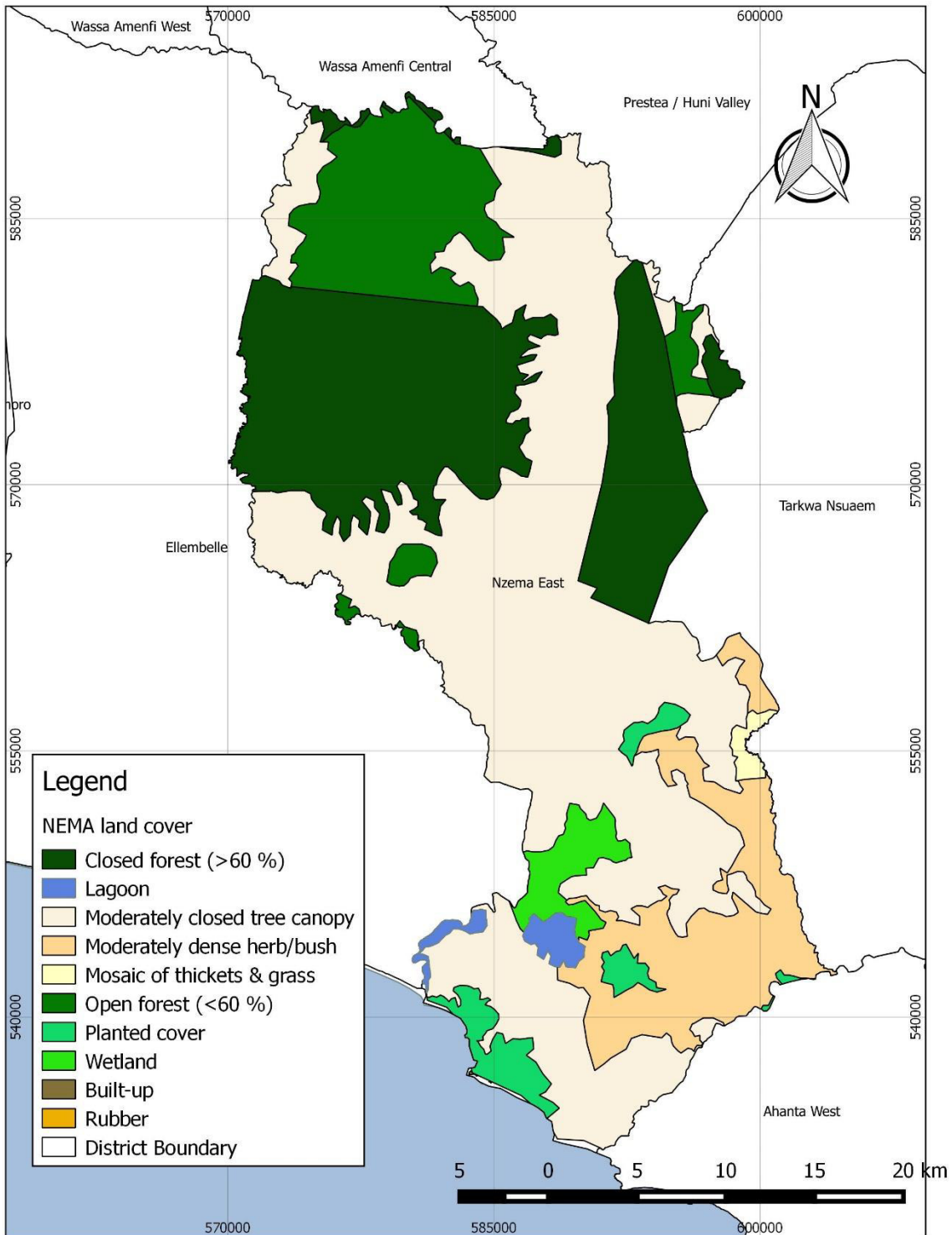
Per the 2010 population and housing census, the population of the municipality stood at 60,828 in 2010, constituting 2.6 percent of the Western Region's population. The municipality has a slightly female dominant population per the 2010 population of 30,881 females and 29,947 males; i.e. 50.8 %and 49.2% respectively.

The Nzema East Municipal Assembly (NEMA) is the highest administrative and political authority in the municipality charged with the responsibility of formulating and implementing development plans, programmes and projects. It is responsible for the overall development of the municipality through the preparation of development plans and related budgets. The assembly is also to implement, monitor and evaluate programmes, strategies and projects for effective mobilization of resources for development.

The municipality lies between the wet semi-equatorial climates zones of the West African sub-region with an all year round rainfall and temperatures between 25°-30°C. The average temperature in the district is about 29°C.

The municipality exhibits high potential in tourism. This area is relatively untapped and under-developed.

NZEMA EAST MUNICIPAL - LAND COVER



UPDATE ON CRITICAL DEVELOPMENT AND POVERTY ISSUES

This includes

- a. Education
 - The School Feeding Programme
- b. Health
 - The National Health Insurance Scheme
- c. Water and Sanitation
- d. Social Welfare
 - LEAP Beneficiaries
- e. Agriculture
- f. Rural Enterprise Program

Municipal Agric Department

Executive Summary

Introduction

This report is about the performance of the Department of Agriculture during the period (January-December 2016) to support the crop and livestock sub sectors. It also discusses external forces that impacted on agriculture, sources of funds, human resources development, technology dissemination, HIV/AIDS sensitization, and some challenges affecting extension delivery.

Main Strength of the Agricultural Performance during the Period.

- 1 Agro climatic conditions were favourable for crops and livestock production.
- 2 Enhanced human resources development in M&E reporting.
- 3 Increase in the producer price of cocoa.
- 4 Government's continuous support of the Cocoa Disease and Pest Control.

Main Bottle Necks in the Agricultural Performance during the Period

- i. Frequent Fuel price increase led to increase costs of land preparation, processing of agricultural produce (cassava, coconut, palm fruits, and kernel) and transport charges.
- ii. The fuel price increase and general cases of malaria are the major external forces that affected agricultural production during the period.

- iii. Inadequate numbers of Agricultural Extension Agents and Veterinary officers hindered accomplishment of planned targets.
- iv. None release of operational funds held back accomplishment of intended objectives.

Contribution of Agriculture to METASIP Objectives during Period

The year recorded slight increases in the crop and livestock sub sectors.

Food Security

Weather conditions allowed for the both major and minor season agricultural production. Cultivation of maize, cassava, plantains, rice, establishment of vegetable nurseries (pepper, garden eggs), and processing activities such as cassava into dough and *gari*; and palm fruits and kernel into oils. Also, varieties of food items were available on both weekly and daily markets in the communities across the municipality, though prices were higher than year 2015.

Production of agricultural raw material for industry and commodity for export

The department continued with farm management activities for the five (5) acres each of *Bankyehemaa* and *Capevars bankye* in four communities, and the five (5) acres of *Ampong* across the municipality as part of our cassava planting material multiplication programme. The initiative is aimed at multiplying and distributing improved planting material to farmers for higher yields.

Effective and efficient input supply and distribution system

Government subsidy on food crops fertilizers continued to attract farmers. It must be noted however that, the department has not received any consignment for onward distribution to farmers.

Development, dissemination and adoption of appropriate technologies

The year saw effective dissemination of technologies to farmers. Technologies disseminated covered crops and livestock production, fisheries, non-traditional farm enterprises, and food processing and utilization. In all, 28 technologies were transmitted to 19,281 farmers across the municipality. Total female farmer involvement was 49% as against 49.2% recorded in year 2015. Reason for the slight reduction in female percentage is that activities like agro processing of all kinds that were perceived and somehow reserved for females were being pursued by males also.

NGOs Involved in Extension Delivery

B-BOVID an NGO operating in Agyan and Brewire communities in the Nzema East Municipality organized a one day training session on *Harvesting & handling of Vegetable produce* for 19 farmers and 3 Agric. Department staff. The session included hands on component of harvesting of cucumber from one of the green house facilities provided for vegetable farmers in Egyan community.

Social Investment Fund Project

The agricultural component of the Rural Integrated Development Project of the Social Investment Fund [SIF] is an intervention aimed at increasing household incomes and employment through enhanced agricultural production, marketing and distribution.

As part of its role in the implementation processes, the Department of Agriculture [DoA] collaborated with the Department of Cooperatives in the Nzema East Municipality to strengthen the capacities of farmers and farmer groups pre-nominated across the municipality. In the event, the 200 selected beneficiaries and 58 others were trained. Fifty eight [58] percentage of trainees were females.

Issues discussed in the training programme included: Agribusiness; Farm management including preparation of activity/enterprise calendars and budgets; Post-harvest management techniques; Safe use & handling of Agrochemicals; Agricultural values chain analysis; and Determination of Enterprise Profitability.

The Regional Director of Agriculture and the Regional Agricultural Extension Officer participated in the opening day at the first training site to address and encourage trainees. Also, officials of Ahantaman Rural Bank [the selected Partner Financial Institution for Nzema East] were present at all the training centres to brief participants of the Bank's selection criteria, application procedures and repayment plans for the loan facility. Further, the SIF Coordinator for Central and Western regions took part in one of the sessions to share with trainees the rationale for the project and emphasized the need for beneficiaries to utilize the loan facility for purposes for which they will be granted.

In all 12 days were used to train a total of 258 farmers by clusters in four different locations. At the time of compiling this report, no cash has been disbursed to any of the project beneficiaries.

Cross Cutting Issues

Gender issues

Technology transmission to female farmers stood at 49% for year as against 49.2% last year. Males pursuing activities like agro processing of all kinds that have been perceived to be female activities partly accounts for the reduction in the female percentage participation.

Environmental issues

Environmental issues faced by the municipality included soil infertility leading to low yields. This problem was addressed by introducing farmers to fertilizer application. Cassava-legume intercrop production systems would be encouraged in the seasons ahead. These technologies would be passed on to farmers to improve soil fertility for improved yields in cassava, vegetables, cocoa.

Main Lessons Learned, Recommendations and Strategic Actions

Lessons learned

1. Fuel price increase and isolated cases of Malaria and cholera were the major external forces that affected agricultural production during the period, though not significantly.
2. Prices of food items continue to rise on the market with the increase in price of fuel.
3. Inadequate numbers of Agricultural Extension Agents and Veterinary officers impeded accomplishment of planned targets.
4. None release of operational funds held back achievement of intended objectives.

Recommendations and strategic actions

The following recommendations are made to ensure achievement of planned targets:

1. District Health Directorate should intensify education and distribution of insecticide treated Mosquito nets in rural communities across the district to contribute to protecting farm people against malaria.
2. MoFA's Budget Unit should release operational funds to the cost centre promptly.
3. MoFA Head office should post 10 AEAs and 3 veterinary personnel to the municipality to enhance access to agric information by farmers, animal health service provision, and public

health education and also increases our contribution to internal revenue generation of the Municipal Assembly.

4. MoFA headquarters should supply a pool vehicle for District Officers and one for the Director to enhance their supervisory and monitoring activities.
5. NEMA should consider applying part of the DACF as credit support to farmers to enhance agricultural production in the municipality.

Strategic actions

1. We would support technical staff to intensify education on cross cutting issues such as Gender and HIV/AIDS in agricultural development.
2. Also, we would sustain efforts in extension and technology dissemination.
3. Further, we would in collaboration with Co-operative department continue FBO formation to enhance effectiveness and efficiency in technology delivery and credit management.

Actions Already Taken

1. We continued to engage in crops, livestock, fisheries, and cross-cutting based technology dissemination to farmers with the objective to increasing productivity.

Impact of Climatic Condition and External Forces on Agriculture

Weather

Climatic data of the period

Data	1st Quarter		2nd Quarter		3rd Quarter		4th Quarter		Total	
	2015	2016	2015	2016	2015	2016	2015	2016	Annual - 2015	Annual - 2016
Rainfall (mm)	220	344.9	708	794.4	89.8	389.5	415	not available	1432.9	1528.8
No rain days	24	23	48	47	38	53	35	not available	145	123
Rainfall Distribution	Normal	Normal	Below	Normal	Below	Normal	Below	Below		

FREQUENT EVENTS							
Bush Fire	-		-	-	-	-	-
Price variation of agric inputs	-	-	-	-	-	-	-
Malaria	All Zones	2	2	7	7	0	0
Seasonal rural - urban migration	-	-	-	-	-	-	-
Fuel Price Increase	All Zones	4	4	6	6	1	1
Occurrence of droughts	-	-	-	-	-	-	-
Illegal mining (Galamsey)	All Zones	4	4	7	7	1	1
LESS FREQUENT EVENTS							

Fuel price increase resulted in farmers paying high rates for land preparation, agro inputs, agro processing, and transporting of produce to market centres which also led to increases in prices of food items. Malaria was a worry to farm families leading to reduced concentration on farm activities. In this direction, we recommend to the Municipal Health Directorate to intensify education on malaria prevention and distribution of insecticide treated mosquito nets in rural communities.

Status and Progress of the Agricultural Sector

Decentralized Agriculture Sector Strengthening

Availability and Access to Food Outlets

	Annual - 2015	Annual - 2016
Number of district food markets (daily to weekly) all year round	2	2

Source: DADU,

Daily markets occur in most communities across the municipality. However, Fantekrom and Dominasi markets are the 2 weekly markets that occur in the municipality. Dominasi market is bigger and attracts farmers and traders from across the municipality and elsewhere. The Nzema East Municipal Assembly is considering establishing a fish market in Axim.

Food Based Nutrition Education

Information/Technologies Disseminated	Annual - 2015			Annual - 2016			% Difference Between 2015 and 2016		
	Male	Female	Total	Male	Female	Total	Male	Female	Total
Awareness creation on food-based nutrition in relation to food production	88	155	243	150	305	302.0%	70.5%	96.8%	-98.8
Protein Energy malnutrition (PEM)							-	-	-
Micro-nutrients (vit A, Iron & Iodine).							-	-	-
Food-to-food fortification demonstrations	10	50	60	20	70	90.0%	100.0%	40.0%	-98.5
Nutrient conservation demonstrations in food preparation							-	-	-

Education on food handling and safety	80	120	200	102	200	302.0 %	27.5 %	66.7 %	- 98.5
--	-----------	------------	------------	------------	------------	-------------------	------------------	------------------	-------------------------

Source: WIAD/MoFA

Food safety is a major concern to people in developing countries including Ghana. Poor food safety poses an important drain on economic activities such as farming. Among food issues is food contamination along the food chain and its related hazards to the ultimate consumer. It is in this direction that our WIAD desk sensitized over 300 farmers mostly females on the subject across municipality. Beneficiaries also learnt guidelines to minimize nutrient loss during food preparation. The impact points that beneficiaries took home was: “Wash utensils thoroughly before and after cooking and don’t over-cook your food, always ensure clean cooking area”

Average Wholesale Food Price of Major Commodities

District Average Price			
COMMODITY	Annual - 2015	Annual - 2016	Percentage Difference
Maize (100Kg)	200	140	-30%
Local Rice (100 kg)	320	182	-43%
Millet (93 kg)	220	200	-9%
Sorghum (109 kg)	160	150	
Cowpea (109 kg)	500	460	-8%
Groundnut (82 kg)	500	520	4%
Yam (250 kg)	310	350	13%
Cocoyam (91 kg)	140	150	7%
Cassava (91 kg)	60	70	17%
Plantain (9-11kg)	16	13	-19%
Tomatoes (52kg)	300	400	33%
Smoked Herrings (100 singles)	55	50	-9%

Source: DADU / RADU / SRID, MoFA

There was price rise in ground nut, yam, cocoyam, cassava, and tomato, ranging from 4– 33%. Prices of other food items as indicated on the table above saw a decline in comparing year 2015 with year 2016. This data was collected from Aiyinasi market in the Ellembele district and Dominasi in the Nzema East Municipal. Interestingly, there are essentially no variations in commodity prices in the 2 locations.

Vaccinations and Prophylactic Treatments of Farm Animals and Pets

Animal Species	Disease	No. of Animals Vaccinated		Achievement (+/-) for Annual (2016 vs. 2015)
		Annual - 2015	Annual - 2016	
Poultry	<u>Newcastle Orthodox</u>	1870	2000	130
	I-2	0	1500	1500
	Gumboro	2400	1400	-1000
	Fowl pox	0	1000	1000
	Marek's disease	0	0	0
	Anthrax	0	0	0
	Cattle	Blackleg	0	0
	CBPP	0	0	0
Sheep	PPR	182	0	-182
	Anthrax	0	0	0
Goats	PPR	0	100	100
	Anthrax	0	0	0
Dogs	Rabies	21	53	32
Cats	Rabies	0	0	0
Cattle	Trypanosomiasis	0	0	0

Source: Veterinary Services / DADU, MoFA

Not much activity was carried out in prophylactic treatment of farm animals especially small ruminants. This was due to livestock farmers not accessing the services citing high cost of services as the reason. Some vaccination in poultry and dogs were however conducted. We recommend

that livestock vaccination programmes should be supported by NEMA in 2017 to enhance the development of the livestock sub sector in the municipality and also to ensure public safety against rabies.

Group Formation

Type of Group	Existing groups (D)			New groups (E)			Total group	Total Male Membership	Total Female Membership	Ratio of Male / Female members**	Functional groups (F)		
	N o.	Member ship		N o.	Member ship						N o.	Member ship	
		M	F		M	F						M	F
Annual - 2015													
Crop Production	14	436	183	3	18	8	17	454	191	2.38	14	436	183
Animal Production	6	38	18	3	20	12	9	58	30	1.93	6	38	18
Processing	5	63	83	1	3	7	6	66	90	0.73	5	63	83
Marketing	1	6	10	1	3	7	2	9	17	0.53	1	6	10
District Total	26	543	294	8	44	34	34	587	328	2	26	543	294
Annual - 2016													
Crop Production	17	454	191	4	36	32	21	490	223	2.20	17	454	191
Animal Production	12	58	30	2	12	8	14	70	38	1.84	12	58	30

Processing	6	66	90	2	14	30	8	80	120	0.67	6	66	90
Marketing	2	9	17	2	12	23	4	21	40	0.53	2	9	17
District Total	37	587	328	10	74	93	47	661	421	2	37	587	328

Source: DADU/RADU, AESD, MoFA

Ten [10] new groups and nine existing ones were formed and reorganized respectively. The new groups are involved in crops, livestock, processing and marketing activities. The reason for this interest revival of farmers to belong to groups is the incoming SIF Project. The Nzema East Municipal is participating in this project with the objective to achieve a rise in household family incomes and provide employment through enhanced farming, marketing and distribution in the agricultural production value chain. Beneficiaries (200) selected include micro and small holder farmers and farmer groups involved in crops, livestock, and fisheries production and marketing of agro inputs. We recommend that the municipal assembly should allocate part of its common fund to provide support to well organized FBOs in their farming businesses. This action will serve as a motivation for other farmers to belong to groups to attract support from other development partners and also enhance extension delivery.

Distribution of Farmer Based Organizations Accessing Services

	Number of formed FBOs	Number of functioning FBOs	Number of functioning FBOs accessing financial services	Number of functioning FBOs accessing marketing information	Number of water user associations
Annual - 2015	34	26	17	1	0
Annual - 2016	44	34	28	10	0
% Change Q/Q	0.13	0.29	0.31	0.65	0

Source: DADU/RADU, AESD, MoFA

Our efforts to increase the number of functional FBOs during the period, also led to a rise in number of groups that accessed some form of financial services as compared with the 2015

scenario, Field officers will continue to link farmers to informal financial houses like the micro finance groups and *Susu* operators, while we recommend that NEMA allocates a percentage of her DACF to support farmers in the form loans.

Access to agricultural services and adoption of technologies

No such facility exists in the municipality. We intend to establish one agricultural information center at Dominasi to take care of increasing information needs of farmers. Lack of funds continued to pose as the key challenge. The Municipal Assembly is being called upon to assist the department to set up the center.

Protection and Mitigation Measures Implemented

Annual - 2016							
Measures implemented	Number of Trainings	Number of Male Participants	Number of Female Participants	Total Participants	Nature of actions	Impact (Perception compared to Annual - 2015)	Remarks
Bush fire management protection awareness/training	11	180	65	245	Awareness creation	-	-
Crop rotation	90	226	920	1146	Cassava-maize-cowpea	-	-
Intercropping /Mixed farming	106	1341	1229	2660	Cassava-maize-cowpea	-	-
Cropping management training	112	4530	2124	6654	Pest and disease control in cocoa	-	-
Minimum tillage	98	1371	709	2080	Weedicide application	-	-

Integrated Nutrient Management	195	4485	1670	6155	Sidalco + Asasewura in cocoa	-	-
IPM (Integrated Pest Management)	129	1624	1356	2980	Plantain paring	-	-
Training on perennial fruit and fodder plantation against soil erosion	28	255	352	607	- Crop spacing	-	-
Cover cropping	5	72	40	112	Coconut - oil palm		
TOTAL	545	8606	8467	17121			

Source: DADU

In connection with sustainable use of land, our field staff disseminated strategic messages on nine (9) technologies as indicated on the table above to a total of 1, 7121 farmers during the year. The objective was to empower farm people to apply sound land management practices in their day to day farming activities to enhance their productivity, prevent erosion and other forms of degradation in order to meet the needs of the present and future generations.

Agriculture Extension Capacity

Annual 2016							
	TOTAL (district)	Average (zone)	Minimum (zone)	Maximum (zone)	Northern Zone	Southern Zone	OVERALL DISTRICT
Human resources							

Number of AEAs required per Zone	16	8.0	8	8	8	8	16
Number of AEAs at post	6	3.0	2	4	2	4	6
% AEAs at post compared to required	<i>37.5%</i>				<i>25.0%</i>	<i>50.0%</i>	<i>37.5%</i>
Number of female AEAs at post	1	0.5	0	1	0	1	1
% of female AEAs at post compared to total AEAs at post	16.7%				0.0%	25.0%	16.7%
Number of farm households	20000	10000.0	7000	13000	7000	13000	20000
Ratio farm households per AEAs at post	3333.33333				3500.0	3250.0	3333.3
Mobility							
Number of running motorbikes per Zone	6	3.0	2	4	2	4	6
Ratio running motorbike/AE A at post	1				1.0	1.0	1.0
Field visit resources	financial						

T&T amount planned with GoG budget per Operational Area	232	116	100	132	132	100	232
Total GoG T&T amount disbursed	232	116	100	132	132	100	232
Total project related and other sources T&T amount disbursed	232	116	100	132	132	100	232
Average T&T disbursed/AE A	0				0	0	0
Extension coverage							
Number of farming communities	855	427.5	300	555	555	300	855
Total number of farming communities covered by extension services this year	550	275.0	193	357	357	193	550
Number of farming communities covered 3 or more times this year	330	165.0	116	214	214	116	330
Number of farming communities	330	165.0	116	214	214	116	330

TOTAL	9828	9453	19281	49.0%	2276	2170	2450	2055	2719	2637	2383	2591
Crop	Males	Females	Total	% female	M	F	M	F	M	F	M	F
Correct use of agro-chemicals	1194	1095	2289	47.8%	320	230	260	276	414	399	200	190
Row Planting for optimum production	1093	948	2041	46.4%	232	200	362	188	299	371	200	189
Seed/planting material production and multiplication techniques	559	521	1080	48.2%	140	80	69	88	200	141	150	212
Pest/Disease recognition, prevention and control	851	671	1522	44.1%	190	158	186	97	265	256	210	160
Post harvest of food grains/legumes and storage	265	324	589	55.0%	80	110	32	19	59	100	94	95
Introduction of improved crop varieties	600	424	1024	41.4%	100	54	55	30	200	140	245	200
Cocoa Nursery practices	385	385	770	50.0%	90	40	55	50	140	110	100	185

and Diseases control												
Mushroom production	4	2	6	33.3%	0	0	5	1	0	0	4	2
Animal traction techniques	0	0	0	#DIV/0!	0	0	0	0	0	0	0	0
Yam miniset	0	0	0	#DIV/0!	0	0	0	0	0	0	0	0
Vegetable production	327	319	646	49.4%	30	12	75	45	77	76	145	186
Plantain sucker multiplication	555	438	993	44.1%	154	202	265	131	78	65	58	40
Horticultural crop production (nursery practices and disease control)	0	0	0	#DIV/0!	0	0	0	0	0	0	0	0
Improved processing technique	111	421	532	79.1%	28	86	33	109	28	143	22	83
Subtotal	5944	5548	11492	48.3%	1364	1172	1392	1033	1760	1801	1428	1542
Livestock	Mal es	Femal es	Tota l	% femal e	M	F	M	F	M	F	M	F
Meat hygiene	29	13	42	31.0%	2	2	5	2	17	3	5	6
Sensitising butchers on harmful	5	3	8	37.5%	0	0	3	1	0	0	2	2

effects of singeing.												
Animal nutrition (feeding)	471	390	861	45.3%	88	94	183	113	74	33	126	150
Rabbit & grasscutter production and processing	29	9	38	23.7%	11	2	5	1	5	2	8	4
Improve housing for animals	471	390	861	45.3%	88	94	183	113	74	33	126	150
Pig production and management	264	190	454	41.9%	56	28	58	26	62	28	88	108
Breed improvement techniques	135	118	253	46.6%	5	5	18	16	72	44	40	53
Snail farming and management	34	40	74	54.1%	20	12	2	4	6	12	6	12
Grazing land improvement	0	0	0	#DIV/0!	0	0	0	0	0	0	0	0
Pasture development	0	0	0	#DIV/0!	0	0	0	0	0	0	0	0
Guinea fowl production	0	0	0	#DIV/0!	0	0	0	0	0	0	0	0

Fish processing	72	323	395	81.8%	36	120	36	88	0	47	0	68
Integrated fish farming (rice fish culture)	0	0	0	#DIV/0!	0	0	0	0	0	0	0	0
Feeding trials	0	0	0	#DIV/0!	0	0	0	0	0	0	0	0
Improved processing technique	72	323	395	81.8%	36	120	36	88	0	47	0	68
Subtotal	162	668	830	80.5%	87	248	73	186	2	98	0	136
Others	Mal es	Femal es	Tota l	% femal e	M	F	M	F	M	F	M	F
Soya Utilisation	137	291	428	68.0%	70	120	51	130	11	26	5	15
Improved irrigation technology	44	40	84	47.6%	11	10	11	10	11	10	11	10
Bee-keeping	0	0	0	#DIV/0!	0	0	1	0	0	0	0	0
Use of weighing scales	98	139	237	58.6%	44	32	25	32	21	70	8	5
Subtotal	279	470	749	62.8%	125	162	87	172	43	106	24	30

Source: DADU

The year saw effective dissemination of technologies to farmers. Technologies disseminated covered crops and livestock production, fisheries, non-traditional farm enterprises, and food processing and utilization. In all, 28 technologies were transmitted to 19,281 farmers across the municipality. Total female farmer involvement was 49% as against 49.2% recorded in year 2015.

Reason for the slight reduction in female percentage is that activities like agro processing of all kinds that were perceived and somehow reserved for females were being pursued by males also.

Youth in Agriculture

District	Youth involved in farm activities with MOFA special initiative for youth			
	Male	Female	TOTAL	% Female
Nzema East	38	44	82	54

Source:DADU

The department was able to persuade and inspire 82 young people to participate in the SIF supported agro project which is likely to start sometime in 2017. The project has an objective to increase household family/individual incomes by providing employment through enhanced farming, marketing and distribution in the agricultural production value chain. Beneficiaries will be involved in crops, livestock, and fisheries production and marketing of agro inputs.

Standardized Activity Implementation Efficiency

Annual - 2016						
	No of activities planned in district planning (1)	No of activities prioritized based on resource allocation (2)	No of activities implemented and completed as scheduled (3)	No of activities started but not completed	Global programme cycle implementation efficiency (Ratio 3/1)	District development implementation efficiency (Ratio 3/2)
Nzema East	48	38	20	18	41.7%	52.6%

Source: DADU/RADU

Activities implemented and completed included: improved pig management practices, M&E Training, Planning, Review & Target Setting Session, Nutrition education; crosscutting issues of gender and HIV/AIDS in agricultural development. Further 28 activities were started but not completed. The unit recorded an implementation efficiency of 52.6% . The seemingly low

implementation efficiency is largely due to non-release of operational funds to the cost center to execute planned activities. Also issues of low staff strength, lack of basic logistics such as protective clothing, pool vehicle for field supervision also contributed to the low accomplishment of planned objectives.

Number of Farmers Sensitized on HIV/AIDS

	Annual – 2015					Annual - 2016				
	Number of sensitization sessions	Number of Participants				Number of sensitization sessions	Number of Participants			
		Male	Female	TOTAL	% Female		Male	Female	TOTAL	% Female
Nzema East	300	4,007	5,184	9191	56%	360	6500	6736	13236	51

Source: DADU/RADU

Farmers continue to receive sensitization messages on HIV/AIDS especially the females. This is because farmers now agree that HIV/AIDS is a development issue and that there is a clear link between health and productivity. The major message is about preventive methods and how not to stigmatize the PLWAs.

Lessons Learned During the Year

Main Lessons Learned, Recommendations and Strategic Actions

Lessons learned

1. Fuel price increase and isolated cases of Malaria and cholera were the major external forces that affected agricultural production during the period, though not significantly.
2. None release of budgetary support affected planned activities.
3. Prices of food items continue to rise on the market with the increase in price of fuel.
4. Inadequate numbers of Agricultural Extension Agents and Veterinary officers impeded accomplishment of planned targets.
5. None release of operational funds held back achievement of intended objectives.

Recommendations and Follow up

Recommendations

For us to continue to satisfy our publics, the following recommendations are made:

1. MoFA's Budget Unit should release operational funds to the cost centre on time. .
2. MoFA Head office should post more 10 AEAs and 2 veterinary technical officers to the municipality to enhance extension and technology delivery.
3. Western Regional Directorate should post one additional market enumerators to the municipality to support adequate market price data collection.
5. MoFA headquarters should supply a pool vehicle for District Officers to enhance their service delivery duties.
6. NEMA should consider using part of the DACF to offer credit support to farmers in their quest to increase agricultural production in the municipality.

Strategic actions

1. We would support technical staff to intensify education on cross cutting issues such as Gender and HIV/AIDS in agricultural development.
2. Also, we would sustain efforts in extension and technology dissemination.
3. Further, we would in collaboration with Co-operative department continue FBO formation to enhance effectiveness and efficiency in technology delivery and credit management.

Actions Already Taken

1. We continued to engage in crops, livestock, fisheries, and cross-cutting based technology dissemination to farmers with the objective to increasing productivity.

RURAL ENTERPRISE PROGRAM/BUSINESS ADVISORY CENTRE

The tables below show the activities undertaken by the office within the year

DATE	ACTIVITIES	VENUE	NO. PART	SEX	TARGET GROUP	AMOUNT GH¢	SPONSORS
1 st July to 30 th September, 2016	Follow up & Counselling Services	Clients premises	39	M-17 F-22	Coconut oil processors, Soap makers, Dressmakers, Hairdressers & Gari processors	600	REP/BAC
5 th to 11 th March, 2016	Basic CBT in Mushroom cultivation	Averebo	35	M-20 F-15	Coconut oil processors & Farmers	3000	REP/BAC
12 th to 18 th March, 2016	Technology improvement in poultry	Averebo	34	M-21 F-13	Farmers Group & Coconut oil processors	2500	REP/BAC

DATE	ACTIVITIES	VENUE	NO. PART	SEX	TARGET GROUP	AMOUNT GH¢	SPONSORS
1 st April to 25 th June, 2016	Follow up & Counselling Services	Clients premises	72	M-17 F-55	Coconut oil processors, Soapmakers, Dressmakers & Gari processors	1000	REP/BAC
9 th April, 2016	Business Networking	Averebo	14	M-5 F-9	Coconut oil processors	245	EDAIF
22 nd to 27 th June, 2016	Group Dynamics	Averebo	13	M-6 F-7	Coconut oil processors	2000	REP/BAC

DATE	ACTIVITIES	VENUE	NO. PART	SEX	TARGET GROUP	AMOUNT GH¢	SPONSORS
4 th July to 14 th September 2016	Follow up & Counselling Services	Clients premises	61	M-20 F-41	Gari processers Hair Dressers, Wood workers, Garages Soap makers, Dressmakers ,	920	REP/BAC
10 th to 12 th August, 2016	Technology Improvement and finishing in carpentry and joinery	Axim community centre	20	M-15 F-0	Axim Wood workers Association	1456	REP/BAC
18 th August to 20 th August 2016	General Business Management	Axim community centre	30	M-3 F-27	Dressmakers	1280	REP/BAC
23 rd to 27 th August, 2016	Technology Improvement in soap making	Yediyesre-Axim	35	M-5 F-30	Unemployed Youth/ Farmers	2275	REP/BAC
13 th to 17 th September, 2016	Basic Community Based Skills Training in Cassava Processing	Fantekrom community centre	25	M-10 F-15	Cassava dough Processors	2360	REP/BAC
19 th to 23 th September, 2016	Basic Community Based Skills Training in Poultry	Ewoku community centre	25	M-10 F-15	Coconut Farmers/Unemployed Youth	2600	REP/BAC

DATE	ACTIVITIES	VENUE	NO. PART	SEX	TARGET GROUP	AMOUNT GH¢	SPONSORS
4 th October to 14 th December	Follow up & Counselling Services	Clients premises	15	M-5 F-10	Coconut oil processors, Virgin oil processors Hair Dressers, Wood workers, Garages Soap makers, Dressmakers ,	150	IGF
7 th to 11 th November, 2016	Basic CBT in Beads making	Axim	70	M-20 F-50	Ghana federation of Disable	3000	NEMA
14 th to 18 th November 2016	Basic CBT in Batik Tye and dye	Antowo Apoowosika	58	M-18 F-40	Unemployed Youth in Antowoapowosika	2000	Office of nkosuo Hene/BAC
21 st to 26 th November ,2016	Basic CBT in soap making	Brewire	40	M-5 F-35	Girls Girls Group	1900	Office of nkosuo Hene/BAC
5 th to 9 th December, 2016	Basic Community Based Skills Training In Beads making	Apowosika	39	M-8 F-31	Unemployed Women	1800	Office of nkosuo Hene/BAC

No funds were released by REP for the 4th quarter hence the BAC resorted to other means of getting funds for our activities. The centre collaborated with the office of the nkosuohene of lower Axim traditional area to train 150 youth and women group in soap making, tye and dye and beds making. The BAC again solicited for funds from the Nzema East Municipal Assembly to train the Axim branch of the Ghana federation of the disabled in beads production.

Access to Rural Finance (ARF)

The REP/BAC – Axim planned to facilitate clients' access to credit and as part of this, BAC – Axim planned to link clients to EDAIF Loan scheme to help reduce their Business financial problems.

In the course of the period the BAC office has been able to link one (1) female client to EDAIF loan Scheme and the loan of three thousand Ghana cedis(3000) has been approved and Disbursed to her. She is yet to begin with the repayment of the loan.

Institutional Development (ID)

Through the collaboration of NBSSI and EDAIF, one of the Clients of the BAC has been given loan to enhance her business development and growth. Payment of the loan begins in 2017. The BAC again collaborated with the Western Coastal Foundation, an NGO that operates in the six coastal districts of the Western region to introduce the Village Savings and Loan scheme to assist the rural folks to save their own money. Those that join this groups can assess loans from the scheme to expand their businesses and repay later with interest. About 17 members took loan from the scheme to expand their agro businesses

Details of collaboration

Name of partner	Area of collaboration	Total cost	Financing				Did Partner funds pass through BAC accounts?
			Partner (GHc)	REP (GHc)	Client (GHc)	Total	
							No
EDAIF	.Training and Loan Disbursement.	GH¢3000	GH¢3000			GH¢3000	

Success stories/lessons learnt/innovations

The Municipal Assembly in collaboration with BAC Axim has established a Light industrial Estate for the local artisans to facilitate their development. The site is almost ready and the artisans will move there soon with the BAC since an ultramodern office complex has been built for the Centre. The BAC again was able to partner with a lot of institutions to provide a lot of business development services. Notable among them is the collaboration with the office of the nkosuohene to provide three business development services to the citizenry. The BAC again partnered with two NGO s in organising BDS and management training for some organic farm groups and provided them with start-up kits. The BAC was able to participate in the client exhibition and trade

show that was organised by the REP AND Ga south Municipal assembly at Weija with five(5) clients.

Challenges/Recommendations

Inadequate funding in terms of operations from the Municipal assembly to help in the day to day running of the office.

I recommend that funds should be released on time by REP for smooth implementation of the programme.

Conclusion

The clients supported by REP/BAC were very happy for the support they received and promised to work to start up new businesses and expand existing ones to improve upon their livelihood as well as create jobs to reduce poverty. The two NGO s by names Western coastal foundation and the Western coastal sustainable project assured to partner the BAC to increase the number of people that benefited from the village savings and loan scheme and also provide more management trainings for the LLBA s.

NADMO

During the year in review, the National Disaster Management Organisation for Nzema East engaged in the following activities

PRE- DISASTER ACTIVITIES

- a) Hydromet and fire disaster prevention educational campaigns were held in several communities and schools.
- b) Epidemics (Cholera, bird flu, etc.) prevention educational activities were held in several communities and schools.
- c) The secretariat organized clean-up activities in selected communities and schools.
- d) Bushfire educational meetings were held with palm-wine tappers, charcoal burners and farmers across the municipality.
- e) The secretariat organized communities and groups to de-silt chocked drains and cleared bushy water-logged areas to allow free flow of running water to prevent floods.

DISASTER PREVENTION/ENVIRONMENTAL PROTECTION PROGRAMMES/ACTIVITIES

- a) Educational meetings were held with fishermen and fishmongers on safekeeping of pre-mix fuel.
- b) Inspection of houses and structures were undertaken in selected communities to identify

- weak and hazardous buildings and structures for appropriate recommendations.
- c) Domestic and bushfire prevention educational activities were undertaken at selected entertainment centres, schools and communities.
 - d) Inspection of fresh fish catches were undertaken to ensure harmful chemicals are not used in fishing.
 - e) Hydromet disaster prevention educational activities were undertaken across all zones.
 - f) Communities and schools were educated and encouraged to plant trees to serve as wind breaks at their schools and communities.

DISASTER MANAGEMENT ACTIVITIES

- a) Fire (Domestic and Bush)
Four (4) domestic fire incidents were recorded within the period.
No bushfire incident was reported.
- b) Hydromet
Six (6) hydromet disaster incidents were reported.
- c) Ebola and Birdflu
There was no confirmed Ebola or Birdflu case.

RELIEF AND RECONSTRUCTION

- a) Some relief items were received from the Regional Nadmo Secretariat.
No relief items were received from the Nzema East Municipal Assembly.
- b) No reconstruction or rehabilitation activities was undertaken.
- c) There was no search and rescue operation.

SOCIAL MOBILIZATION

Currently, there is no active Disaster Volunteer Groups (DVGs). The organization's failure to provide logistics to the Volunteers have caused the DVG's inactiveness.

There are plans to reactivate the DVGs and form additional ones but due to lack of funds and resources, the exercise has not yet been implemented.

SPECIAL PROGRAMMES

No special programmes was held in the year due to lack of funds.
Several programmes were planned for execution though.

OBSERVATION/COMMENTS

The secretariat did not receive the expected and needed support from the Assembly to enable it undertake its programmes for the year.

CONCLUSION

The Municipality experienced heavy hydromet disaster incidents, thus tidal waves and floods which rendered a lot of people displaced and properties destroyed.

The Secretariat's relief stock is depleted. The Secretariat also finds it very difficult to reach out to communities and Zonal Officers in emergency situations due to lack of means of transport.

RECOMMENDATION

It was highly recommended that the Secretariat is provided a vehicle (means of transport), telephone and computer facilities to enhance work performance.

Funds should be provided for training DVGs and logistics provided for their operations. The secretariat's relief stock should be replenished.

The Assembly should try to support the secretariat to undertake its mandated activities to mitigate or prevent disasters and emergencies.

GHANA EDUCATION SERVICE

Brief statement as overview of performance during the quarter

In terms of education, the Nzema East Directorate of Education was established on 15th October 1963. For the purpose of Educational Management the Municipality is divided into five (5) circuits. The five (5) circuits of the Municipality are Axim North, Axim South, Central Ankobra, Lower Ankobra and Upper Ankobra. Each circuit is headed by a Circuit Supervisor.

The Municipal Central Administration has a staff strength of 42 made up of 26 teaching and 16 non-teaching staff. There are 710 teaching staff distributed as follows - 112 at the KG level, 289 at the Primary, 178 at the JHS, 131 at the SHS and 12 teachers at the TVET.

The Public Schools in the Municipal for 2016 were as follows in terms of levels: Sixty-one (63) Kindergartens, fifty-three (54) Primary Schools, thirty-three (35) Junior High Schools, four (4) public Senior High Schools and one (1) Vocational Institute.

The Private schools system is made up of fourteen (14) Kindergartens, fourteen (14) Primary schools, and ten (10) Junior High Schools. Private schools recorded a total enrolment of 4079, made up of KG - 809, Primary - 2302 and JHS - 886.

Vision:

To provide quality teaching and learning activities that will enhance academic performance in all pre-tertiary Schools in the Municipality.

Mission:

The Directorate exists to promote quality child-friendly universal pre-tertiary education through effective monitoring and supervision of public basic schools and senior high schools in the Municipality.

Objectives

The core objectives for the realization of the Directorate's vision and mission are:

- ✚ Effective teaching and learning in the schools so that every child will be able to read, write legibly and understand and solve problems at his/her level.
- ✚ Effective management and supervision at all levels of the educational system in the municipality.
- ✚ Encouraging the communities to fully participate in education delivery.
- ✚ Organizing School-Based Inset and Cluster Based Inset to enhance pedagogical skills of teachers.

Access: Status/performance during the year under the following areas

- **Number of schools** – There are 63 Public schools and 20 Private kindergarten
- **Enrolment situation**- Enrolment reduced by 139 for KG/Primary and increased by 35 as compared to the previous year.
- **Efforts at improving access (school attendance pattern)** – Increased monitoring on punctuality and attendance.
- **Identified challenges in Access during the year** – Inadequate classrooms coupled with increasing enrolment in the various schools posed a challenge.

Key activities identified for performance during the quarter under the following areas

- **Access** –
 1. Community sensitization on school dropouts
 2. Orientation of school children in handling HIV/AIDS, cholera and ebola issues
- **Gender** –
 1. Sensitisation of pupils on reproductive health issues
 2. Formation of gender clubs in schools

- **Quality –**

1. Conduct of SPAM in selected school communities
2. Monitoring of effective use of human resource in schools
3. Monitoring of SBI/CBI in schools

- **Management –**

1. Orientation on the effective use of the Circuit Supervisors’ Handbook
2. Cluster meetings of all headteachers, SMC/PTA and community leaders on effective implementation of policies on school fees, corporal punishment and management of teacher behaviour

Key Activities identified for performance by objectives

Strategic objective	Key	Activity/ project	Funding source	Unit/Department/Agency responsible
Access		<ol style="list-style-type: none"> 1. Community sensitization on preventing school dropout 2. Orientation of school pupils in handling HIV/AIDS, cholera and ebola issues 	GOG	Municipal Director AD Supervision SHEP Co-ordinator Basic Co-ordinator
Gender		<ol style="list-style-type: none"> 3. Sensitisation of pupils on reproductive health issues(reducing the incidence of teenage pregnancy) 4. Formation of gender clubs in schools 	GOG	Girl Child Officer Guidance and Counselling Officer
Quality		<ol style="list-style-type: none"> 4. Conduct of SPAM in selected school communities 5. Monitoring of effective use of human resource in schools in the area of teacher – subject /period allocation and the extent of readiness of the teacher 6. Monitoring of SBI/CBI in schools 	GOG	Municipal Director AD Supervision Training Officer Circuit Supervisors Headteachers of the selected schools
Management		<ol style="list-style-type: none"> 1. Orientation on the effective use of the Circuit Supervisors’ Handbook. 2. Training of teaching staff on office management. 	GOG	Municipal Director Heads of Unit (HRM, Supervision, Admin & Finance, Stats)

Quality: Status/performance during the Quarter under the following areas

- **Teacher attendance trends:** There has being a downward trend in teacher absenteeism due to intensified monitoring done by officers mostly on foot.
- **Trends in learning achievement:** Improved pupil involvement in class exercise and exams led to improvement of the performance standard.
- **Situation of teaching and learning materials:** Adequate and relevant teaching and learning materials were employed in lesson delivery.
- **Identified challenges in Quality during the quarter:**
Untrained teachers outnumbered trained teachers and that lowered performance standard in the various schools.

Learning environments in schools: School environment was conducive for teaching and learning in the period under review.

NATIONAL HEALTH INSURANCE SCHEME

Membership

Total registration	8,690
Achievement	123.8% of 4 th quarter target
Biometric cards issued	263

FINANCES

Premium GH¢33,782.00

Other charges GH¢25,762.00

Paid claims of GH¢273,349.00 for the period march to april 2016

Owes providers for the period may to November 2016

OTHER ACHIEVEMENTS

- a. Started Preferred Primary Provider (PPP) enrollment
- b. Registered pupils in the school feeding schools that were not covered in the 1st round.

PROPOSED PROJECTS

- a. E-receipt to avoid issues with the GCR books
- b. E-claims submitting to save time, and other resources
- c. Deployment of NHIS membership authentication kit to providers

CHALLENGES

1. Poor electrical wiring in the office
2. Escalating electrical bills
3. Poor road access
4. Frequent breakdown of ICT equipment

REPORT FROM CSO's AND NGO's

UNITED CIVIL SOCIETY ON NATIONAL DEVELOPMENT (UCSOND REPORT)

<i>PROJECT</i>	<i>ACTIVITY</i>	<i>COMMUNITY/ VENUE</i>	<i>OUTCOME</i>
WRCF (Western Region Coastal Foundation)	Community Engagement	16 selected communities in Nzema East Municipal (Assuwuah, Bamiankor, Akango, Duale, Axim-Bankyim Gwira Wiawso, Ndateim, Bankyim, Dadwen, Anagye, Akyinim, Aiyinase, Axim-Bokaso, Fantekrom, Nuabesa, Awukyire, Ankyenyin	300 issues related to Power Oil and Gas are prioritized
WRCF (Western Region Coastal Foundation)	Area Meeting	Five selected communities formed an Area (Bokaso, Bankyim, Ndateim, Akyinim, Ankyenyin)	Five communities were able to add and subtract issues that are common them
SNV –V4C PROJECT	Stakeholders consultative meeting	Nzema East	The private sectors and the Assembly both agreed to ensure that sanitation issue is a collective responsibility
STAR GHANA ELECTION 2016	Education on the electoral process to reduce spoilt ballot and low voter turnout	Apewosika, Ndaeim, Apateim, Fantekrom , Ewuku, Aguafo, Aygan, Akonu	Peaceful election 2016
WOMEN ECONOMIC EMPOWERM ENT SCHEME (WEESP)	Women empowerment training on economic empowerment	Solo, Brawire, Police Quarters, Adisi and Market Women.	Women were financially assisted to increase productivity in their various ventures



Community Engagement at Assuwuah



Community Engagement at Akonu/ Domunli



Community Engagement at Fantekrom



One of the Women Empowerment Group having Meeting

Coastal Sustainable Landscape Project (CSLP)

Below are summary of CSLP activities in the municipality

- Beekeeping (more farmers trained, beehives/smokers supplied--most hives colonized)
- Village Savings and Loan Association (VSLA)---8 groups (maximum group size is 25)
- Climate Change Club (CCC)- has two farms in Asonti. featured in CSLP video documentary
- Climate Smart Agriculture (CSA)--focus on organic vegetable production (hands-on training for more farmers, MoFA staff trained, CSA groups formed, handbook on entrepreneurship drafted)

Others:

- Joint Update meetings held with District/Municipal Assemblies and agencies (a platform established by the CSLP for information sharing, networking and collaboration/coordination)

In December 2016, the CSLP also joined the Nzema East Municipal Assembly to celebrate the 32nd edition of Farmers Day celebration at Asonti. The CSLP awarded 2 of its enlisted farmers (a male and female).

OUT STANDING COMMITMENT ON PROJECTS AND PROGRAMMES

DISTRICT ASSEMBLY COMMON FUND (DACF)

S/N	PROJECT TITLE	LOCATIO N	CONTRAC TOR	CONSUL TANT	STARTI NG DATE	EXPECTED COMPLETIO N DATE	CONTRA CT SUM (GH¢)	SOURCE OF FUNDING	PROJECT STATUS	PAYMENT MADE TO DATE	OUTSTAND ING BALANCE (GH¢)
1.	CONSTRUCTION OF CHPS COMPOUND	AGYAN	M/S JOERICA COMPANY LIMITED	WORKS DEP'T, NEMA	02/06/16	02/12/2016	287,689.76	DACF	70% Complete	171,110.86	116,578.90
2.	CONSTRUCTION OF 1NO. 3 UNIT CLASSROOM BLOCK WITH ANCILLARY FACILITY	APEWOSIK A-AXIM	JOETHUR COMPANY LIMITED	WORKS DEP'T, NEMA	24/09/15	24/01/16	235,094.79	DACF	100%	211,585.31	23,509.48
3.	COMPLETION OF 1NO. 3 BEDROOM BUNGALOW	AXIM	M/S SARIANDO CONSTRU CTION WORKS	WORKS DEP'T, NEMA	09/09/14	09/12/2014	137,937.25	DACF	100% Complete	124,143.00	13,794.25
4.	COMPLETION OF ASSEMBLY HALL COMPLEX (PHASE IV)	AXIM	M/S EMYKICS ENTERPRI SE	AESL, ACCRA	03/11/20 10	03/05/2011	198,210.00	DACF	55% Complete	84,000.00	114,210.00
5.	CONST. OF 6 UNIT CLASS ROOM WITH ANCILLARY FACILITY	ATTAKRO M	WAM- HILLS ENT	WORKS DEP'T NEMA	29/09/14	29/07/15	320,811.7,5	DACF	70% Complete	138,041.00	182,770.75

6	SOLID WASTE MANAGEMENT	AXIM	WASTE LANDFILL	ENVIRO NMENTA L HEALTH	25/11/16		80,000.00	DACF	100% complete	NIL	80,000.00
7a.	REDEVELOPMENT OF EWHIBALE MARKET	AXIM	CEDAR SEAL CO.LTD	SIF	18/07/16	18/04/17	1,887,941.21 of which the Assembly is paying 510,812.91 as counterpart fund (27%)	DACF	35% Complete	1,497,128.30	390,812.91
7b	CONSTRUCTION OF MATERNITY HOME	GWIRA ESHIEM									
7c.	CONSTRUCTION OF CLINIC	TEBAKRO M									
7d	CONSTRUCTION OF NURSES QUARTERS	GWIRA BANSO									

URBAND DEVELOPMENT GRANT (UDG) PROJECTS

8.	CONST. OF 16 UNIT LOCKABLE STORES AND 25 UNIT WORKSHOPS	AXIM-AYISAKRO	U S CONSTRU CTION WORKS	WORKS DEPART MENT OF THE ASSEMB LY			1,376,385.75	UDG	Procurement process completed, pending clearance from UDG for award	-----	1,376,385.75
.9	CONSTRUCTION OF POLICE OFFICE COMPLEX	AXIM	M/S JOERICA COMPANY LIMITED	WORKS DEP'T, NEMA	25/04/16	25/12/16	439,398.10	UDG	65% Complete	303,603.32	135,794.78
10.	CONSTRUCTION OF 1NO.3 UNIT BEDROOM BUNGALOW FOR GHANA POLICE SERVICE	AXIM	CHARNET ENG. SERVICES	WORKS DEPT, NEMA	April 2016	October 2016	231,650.90	UDG	100% completed and in use	208,485.81	23,650.09

CAPACITY SUPPORT FUND (CSF)

11	CONSULTANCY FOR DEVELOPMENT OF ASSET REGISTER	AXIM	STRATEGIC INVESTMENT AND MANAGEMENT CONSULT	PLANNING DEP'T, NEMA	5/10/16	19/11/16	73,773.75	CSF	85% Complete	59,019.00	14,754.75
12.	CONSULTANCY SERVICE FOR CITIZEN SATISFACTION SURVEY	AXIM	DEV'T PLAN CONSULT	PLANNING DEP'T, NEMA	5/10/16	19/11/16	73,993.75	CSF	85% Complete	57,800.22	16,193.53

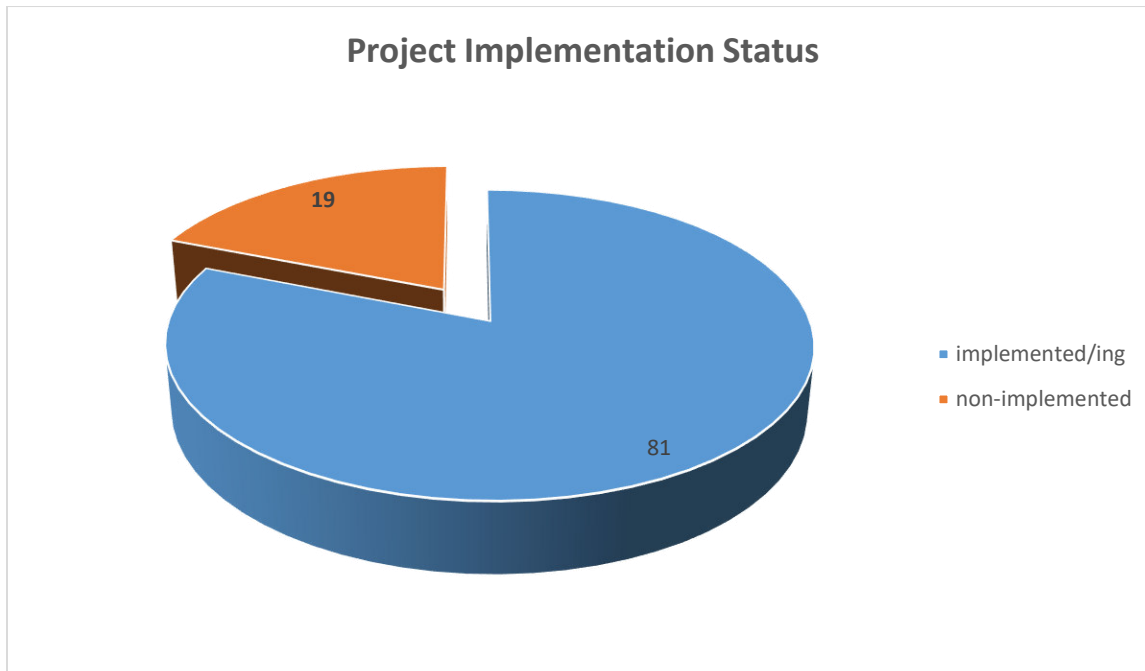
DISTRICT DEVELOPMENT FACILITY (DDF) PROJECTS

13.	CONSTRUCTION OF 2 NO. PIPE CULVERT	ASONTI	B2K CO.LTD	WORKS DEPT	25/11/16	25/02/17	43,836.51	DDF	22% COMPLETE	----	43,836.51
14.	REHABILITATION OF MATERNITY BLOCK	BAMIANK OR HEALTH CENTRE	NAC GHANA CO. LTD	WORKS DEPT	25/11/16	25/02/17	86,221.05	DDF	35% COMPLETE	----	86,221.05
15.	COMPLETION OF COMMUNITY SHED	ASSUOWA H	B2K	WORKS DEPT	25/11/16	25/02/17	34,682.73	DDF		-----	34,682.73
16.	CONSTRUCTION OF 10 NO. WORKSHOPS	AYISAKRO	M/S ASIKUMAN LIMITED	WORKS DEP'T, NEMA	24/09/15	24/01/2016	238,500.00	DDF	100% Complete	214,650.00	23,850.00
17.	COMPLETION OF COMMUNITY CENTRE	AXIM	M/S APPIAH FURNITURE AND CONSTRUCTION WORKS	WORKS	23/09/11	07/04/12	99,799.62	DDF	80% Complete	94,001.40	5,798.22

A total of 73 projects and programs were planned at the inception of the development period under review which includes uncompleted and unimplemented projects from the previous year 2015. By the 31st day of December 2016, 59 projects and programs were either being implemented or have been implemented constituting 81% of planned projects.

However this includes projects that are not directly implemented by the Assembly. E.g. GETfund, GoG, Tullow, Kosmos and GNPC projects

Below is a pie chart to show the projects status



Insufficient funds, poor internally generated funds(IGF) and untimely releases of allocated funds, poor adherence to contract terms by contractors were among the reasons for the constraints being experienced thereof.

The Way Forward

The Municipal Assembly remains committed to the development of the municipality and hence continues to formulate plans and policies directed at mitigating prevailing gaps in its development agenda.

The Assembly in consultation with its relevant stakeholders and agencies is intensifying strategies to whip up its internally generated fund (IGF) base as well as explore all avenues available to identify and boost investment potentials in order to attract external investors into the municipality. It also seeks to deepen engagement with the private sector to integrate expertise in unfolding more development potentials in the municipality.

Annual action plans, procurement plan and effective monitoring and evaluation strategies for the 2017 have been directed to focus on achieving the national as well as municipal development agenda.

While the period under study concentrated development along some key issues as access to basic social services such as education, sanitation, information dissemination, security from crime and violence, access to portable water and revamping of feeder roads in the municipality, drastic measures have been taken to tackle issues of poor revenue generation, an enabling environment for public private partnership (PPP), health (maternal/child) in line with Millennium development goals (MDG) and economic empowerment (livelihood support).

The Assembly, going forward:

- Will find pragmatic measures to be taken to ensure that unduly delayed projects are completed
- Recommends reduction delays in Government funds transfer
- Recommends expedition of action on GETfund and other such sources
- Will focus on building a stronger IGF base to increase its revenue
- Will enhance enabling avenues for developmental collaborations.