

KWAHU WEST MUNICIPAL ASSEMBLY

2016 ANNUAL PROGRESS REPORT



COMPLETED FODUA COMMUNITY SHS



CONSTRUCTION OF CONCRETE LINE "U" DRAIN 0.60M FROM TOTAL JN TO CHURCH OF CHRIST--NKAWKAW.
UDG TYPE 3.
CONTRACT SUM: 190,000.00
STATUS: 100% COMPLETE

Health Committee Members Orientation



FOR JANUARY TO DECEMBER 2016

PREPARED BY:
M. P. C. U.

Contents

ASSENT OF MONITORING TEAM MEMBERS	5
0.0 EXECUTIVE SUMMARY	6
CHAPTER ONE	7
1.0 BACKGROUND	7
1.1 Vision:.....	7
1.2 MISSION STATEMENT	7
1.3 POPULATION SIZE AND DISTRIBUTION	7
1.3 Purpose 2016 Annual Progress Report	8
1.4 PROCESSES INVOLVED AND DIFFICULTIES ENCOUNTERED	8
1.4.1 Processes Involved.....	9
1.4.2 Difficulties Encountered	10
1.5 STATUS OF IMPLEMENTATION OF MEDIUM TERM DEVELOPMENT PLAN (MTDP)	10
CHAPTER TWO	12
2.0 MONITORING AND EVALUATION ACTIVITIES REPORT	12
2.1 PROGRAMMES/PROJECTS STATUS 2016.....	13
2.2 IMPLEMENTATION CHALLENGES OF PROGRAMMES/PROJECTS.....	13
2.3 PROGRESS REPORT ON DEVELOPMENT PROJECTS.....	14
TABLE2. 1: 2016 DACF PROJECTS PAYMENTS STATUS.....	18
TABLE 2.2: STATUS REPORT ON DACF MANDATORY PROJECTS.....	20
TABLE 2.3: TREND OF UDG4 EXPNDITURE STATUS	21
TABLE 2. 3: TREND OF DDF EXPENDITURE STATUS	23
TABLE2.4: SUMMARY OF UDG4 EXPENDITURE STATUS	23
TABLE 2. 5: SUMMARY OF UDG 1-4 FINANCIAL DISBURSEMENT UPDATES: INVESTMENT GRANT	24
TABLE2. 6: UPDATES ON CAPACITY SUPPORT FUND (CSF 1, 3&4).....	25
TABLE2.7: LIST OF DEVELOPMENT PROJECTS INITIATED	26
TABLE: 2.8 YEARS REVENUE PERFORMANCE AND TREND ANALYSIS	28
2.4 EFFORTS TO GENERATE FUNDS.....	32
2.5 DISBURSEMENTS FOR THE 2016	32
CHAPTER THREE	33

3.0 UPDATE ON CRITICAL DEVELOPMENT AND POVERTY ISSUES.....	33
3.1 GHANA SCHOOL FEEDING PROGRAMME	33
TABLE 3.1: LISTS OF SCHOOLS BENEFITING FROM THE GSFP-2016.....	33
3.2 LIVELIHOOD EMPOWERMENT AGAINST POVERTY (LEAP).....	34
3.3 <i>LOCAL ECONOMIC DEVELOPMENT</i>	34
TABLE 3.2: IMPLEMENTATION OF SKILL TRAINING PROGRAMMES.....	34
TABLE 3.3 Co-OPERATIVES.....	35
3.4 MUTUAL HEALTH INSURANCE.....	36
TABLE 3.4 TREND OF NHIS BENEFICIARY POPULATION.....	37
3.4 DISASTER MANAGEMENT.....	38
3.5 WATER AND SANITATION.....	38
3.6 HIV/AIDS.....	38
TABLE 3.5: PEOPLE LEAVING WITH HIV/AIDS.....	39
CHAPTER FOUR.....	40
4.0 DECENTRALIZED DEPARTMENTAL PROGRESS REPORTS.....	40
4.1 DEPARTMENT OF EDUCATION SERVICE.....	40
TABLE 4.1: KG INFRASTRUCTURE/ACCESS.....	40
TABLE 4.2: KG ENROLMENTS.....	40
TABLE 4.2: PRIMARY SCHOOL INFRASTRUCTURE/ACCESS.....	41
TABLE 4.3: PRIMARY SCHOOL ENROLMENTS.....	41
TABLE 4.4: JHS INFRASTRUCTURE/ACCESS.....	42
TABLE 4.5: JHS ENROLMENTS.....	42
TABLE 4.6: SHS INFRASTRUCTURE/ACCESS.....	42
TABLE 4.5: SHS ENROLMENTS.....	43
4.3 DEPARTMENT OF HEALTH:.....	44
4.4 KEY ISSUES AT THE BEGINNING OF 2016.....	45
4.6 KEY ACTIVITIES IMPLEMENTED JAN-DEC 2016.....	46
4.6 WASTE MANAGEMENT DEPARTMENT:.....	53
4.7 WASTE MANAGEMENT EQUIPMENT.....	54
4.8 AGRICULTURE DEPARTMENT:.....	56
TABLE 4.6 FOOD CROPS ANNUAL PRODUCTION LEVELS.....	59
TABLE 4.7 CASH CROPS ANNUAL PRODUCTION LEVELS.....	60
TABLE 4.8 FARMER/EXTNSION SERVICE RATION.....	62

TABLE 4.9 LIVESTOCK PRODUCTION.....	63
TABLE 4.10 FISH PRODUCTION.....	64
4.9 DEPARTMENT OF PHYSICAL PLANNING	66
4.9.1 Plan Layout Preparation.....	66
.....	68
4.10 SOCIAL WELFARE AND COMMUNITY DEVELOPMENT DEPARTMENT .	68
4.10.1 MAJOR PROGRAMMES OF THE YEAR:	69
Table 4.12.Cases handled/ disposed off.....	70
Table:4.13 social enquiry reports.....	71
Table 4.14 CHILDREN RIGHTS PROMOTION AND PROTECTION	71
TABLE 4.15 CENTERS SUPERVISED.....	71
4.10.2 CASE WORK WITH FAMILIES	72
TABLE 4.16 FAMILY REUNIFICATION	72
4.11 DEPARTMENT OF URBAN ROADS.....	73
4.11.1 Drain/Culvert Cleaning.....	73
<i>Grass Cutting</i>	74
<i>Pothole Patching/Sectional Repairs</i>	74
<i>Traffic Lights Maintenance</i>	75
4.11.2 PERIODIC MAINTENANCE.....	76
<i>Gravelling</i>	76
4.11.3 Minor Rehabilitation of Bertrams Area Roads	76
CHAPTER FIVE	77
5.0 SUMMARY OF GENERAL PERFORMANCE	77
5.1. <i>KEY ISSUES/CHALLENGES</i>	77
5.2 Appendices.....	78
5.2.1 PICTORAL PROJECTS PROGRESS PRESENTATION.....	78

ASSENT OF MONITORING TEAM MEMBERS

NAME	DESIGNATION	SIGNATURE
Isaac Mwangu	Municipal Planning Officer	
Henry Yaw Amessineku	Municipal Budget Officer	
Richard Nii Odjidja	Works Engineer	
Joseph Asumadu	Municipal Finance Officer	

0.0 EXECUTIVE SUMMARY

Pursuance to the constitutional mandate of Metropolitan, Municipal and District Assemblies (MMDAs) in Ghana, it is required of them to prepare annual progress reports to track the development activities in the Assemblies for NDPC to collate into a consolidated annual progress report to the President of the Republic of Ghana. The 2016 annual progress report seeks to track performance of the progress of prioritized programmes, projects and activities that have been initiated and being implemented from the 2016 Annual Action Plan under the enhanced Ghana Shared Growth and Development Agenda (GSGDA II). The annual progress report for the Kwahu West Municipal Assembly assessed the implementation status of physical programmes and projects initiated and being implemented in the Municipality. The progress report covers the activities of decentralized departments as established in the Legislative Instrument, 2009 (L.I 1961) as well as some critical interventions that were initiated and are being implemented by some agencies. These include National Health Insurance, Capitation Grant, HIV/AIDS, People Leaving With Disabilities, School Feeding Programme, LEAP etc.

The annual report is outlined in three chapters; chapter one (1) gives the background, objective of the report with regard to M&E System and the challenges encountered. chapter two (2) involves the monitoring and evaluation of programmes and projects. It further highlights on the financial performance of the Municipal Assembly with regards to the sources of funding. The annual reports of the existing Decentralized Departments in the Municipality are harmonized and in cooperated in the 2016 annual progress report of the Municipal Assembly.

Chapter three (3) concludes with the way forward for monitoring and evaluation exercise in the Municipality, key issues to be addressed and recommendations for improvement in the subsequent 2017 M&E reports.

CHAPTER ONE

1.0 BACKGROUND

The Kwahu West Municipal Assembly was carved out of Kwahu South District as Kwahu West District in August, 2004 by a Legislative Instrument 1589. It was however upgraded to a Municipal status in July, 2007 by Legislative Instrument 1870. It has Nkawkaw as its administrative capital; which is the second largest urban town in the Eastern Region. It has 214 settlements within its jurisdiction. The Municipality's capital, Nkawkaw is located about 241 kilometres north-west of Accra. The Municipality consists of 26 electoral areas. The Kwahu West Municipal Assembly has a total membership of 38; consisting of 26 elected members, 10 appointed members, 1 Member of Parliament and the Municipal Chief Executive. The Member of Parliament is however an Ex-officio member.

1.1 Vision: To work in partnership with all stakeholders to ensuring total and wholesome socio-economic development of the Municipality.

1.2 MISSION STATEMENT

The Kwahu West Municipal Assembly exists to improve the quality of life of its people through the effective mobilization and development of human and natural resources; provision of social services and the creation of an enabling environment for accelerated and sustainable development.

1.3 POPULATION SIZE AND DISTRIBUTION

According to the 2010 Population and Housing Census the Municipality has a total population of 93,584 which accounts for about three percent (3.6%) of the population in the Eastern Region. The sex population distribution accounts for 44,875 for the male population; representing forty-eight percent (48%) whilst the female population accounts for 48,709; representing fifty-two percent (52%). The projection based on 2010 population and Housing census (PHC) has a population of 106,919

More than half (51.7%) of the population are in urban areas (47,968) while forty-eight percent (48.3%) reside in rural areas. This is reflected in the Municipality's population contribution of 4.2 percent to the Regional urban population, which is higher than its contribution to the region's rural population (3.1%). The urban populations is concentrated within Nkawkaw, the Municipality's capital and its suburbs, with the

larger majority of the population scattered in the rural localities. The population of Nkawkaw Township makes it one of the most compact localities in the Eastern Region and ranks second to Koforidua in terms of urban population. The urban population contains a higher proportion of females (53%) as against Forty-Seven percent (47%) males.

1.3 Purpose 2016 Annual Progress Report

The underlying purpose for the M&E for the period under review is summarized as follows:

- Track and document the progress of programmes/projects implementation for 2016 and measure performance against targets.
- To ensure transparency, social accountability and value for money in the implementation process of programmes/projects to aid in decision-making concerning whether programmes/projects should be continued, reviewed or discontinued.
- To Establish the extent to which the target groups accept various categories of programmes/projects interventions in the Municipality;
- To establish the benefits of the programmes/projects interventions to the intended target populations.
- To deepen stakeholders' participation/collaboration in M&E process in the Municipality.

1.4 PROCESSES INVOLVED AND DIFFICULTIES ENCOUNTERED

The processes adopted for the M & E activities in the Municipality for the period involved intra and inter Sectoral Monitoring and Evaluation of programmes, projects and activities that were being implemented in the Municipality within the period under review.

The Intra Sectoral Monitoring and Evaluation of programmes, projects and activities were conducted by the Municipal decentralized departments who initiated and implemented programmes, projects and activities in their respective sectors of which they own responsibility.

The Municipal Department of Education has the responsibility to ensuring the availability of quality, safe and accessible schools with adequate classrooms within the development framework of the Municipal Assembly. Other key departments in the Municipality that carried out Monitoring and Evaluation of their respective sectors include; Central Administration Department, Department of Agriculture, Department of Health, Department of Town and Country Planning, Department of Co-operatives, Department of Social Welfare and Community Development, Department of Works/Feeder Roads and Department of Urban Roads. These Departments and their Units are directly involved in adopting and implementing strategies that are connected with the Medium Term Development Framework and poverty reduction issues under the enhanced Ghana Shared Growth and Development Agenda (GSGDAII) in the Municipality. The Decentralized Monthly, Quarterly as well as their annual reports are harmonized for the Municipal composite 2016 annual progress reports.

The Inter Sectoral Monitoring and Evaluation activity is a participatory monitoring process of all development programmes and projects in the Municipality. The process is the involvement of all stakeholders who are responsible for the discharge of development activities in the Municipality. Within the period under review, the Municipal Planning and Co-ordinating Unit and the Regional Planning and Co-ordinating Unit jointly carried out monitoring of the Municipal level development activities. The Municipal Planning Co-ordinating Unit (MPCU) therefore adopted a multidisciplinary approach in its monitoring and evaluation activities in the period under review. The unit however faced a number of difficulties which negatively affected the effective monitoring and evaluation in the period. Below are the processes involved in the monitoring and evaluation and challenges encountered:

1.4.1 Processes Involved

- ▶ Reports on project inspections on sites carried out by the Works Sub-Committee of the Municipal Assembly and the Municipal Monitoring Team as well as MPCU were compiled and discussed during MPCU meeting.
- ▶ Reports from decentralized departments and agencies were collated and discussed at MPCU meetings, The Executive Committee's meeting and General Assembly meetings.
- ▶ Site meetings at on-going project sites
- ▶ Town Hall meetings.

1.4.2 Difficulties Encountered

The Municipal Assembly over the period was confronted with many challenges that limited its ability to effectively carry out M & E activities of its development plans and programmes.

These included;

- ▶ Lack of full complement of decentralized departments to constitute the departments of the Municipal Assembly as per L.I 1961 (eg Transport Department, Trade, Industry and tourism and Natural Resource Conservation Department, Forestry, Game and Wildlife)
- ▶ Inadequate vehicles/logistics to support M&E activities
- ▶ Low capacity of Municipal level staff to establish Municipal level target-base and indicator settings for M&E systems.
- ▶ Inability for the MPCU to meet regularly apart from its quarterly meetings
- ▶ Untimely and inadequate release of Common Fund and other Donor Grants
- ▶ Inadequate M&E data to support M&E system
- ▶ Inadequate M&E staff with requisite knowledge and skills
- ▶ Inconsistent departmental M&E reports.
- ▶ Untimely departmental progress reports submission

1.5 STATUS OF IMPLEMENTATION OF MEDIUM TERM DEVELOPMENT PLAN (MTDP)

The following adopted strategies were carried out from its Medium Term Development Plan for 2014 – 2017 during the 2015 planned period.

1. Expansion of educational Infrastructure.
2. Promotion and provision of Health infrastructure
3. Provision of sanitation facilities
4. Extension of electricity to deprived communities within the Municipality.
5. Encouraged grassroots participation in revenue mobilization.

6. Promotion of constant interaction among the various stakeholders in the decentralized development process.
7. Rehabilitation of road network for the promotion of the local economy.
8. School enrolment drive programme.
9. Promotion of Good Governance

CHAPTER TWO

2.0 MONITORING AND EVALUATION ACTIVITIES REPORT

Monitoring and Evaluation (M&E) of development activities provide Government Officials, Development Partners and the Civil Society Organizations with better means for learning from past experiences; improving service delivery, planning and allocation of resources and demonstration of result as part of social accountability to key stakeholders. The Municipal Annual Progress Report for 2016 is therefore to demonstrate to our Social Development Partners the progress made within the period under review in nine (9) key objectives areas as;

- 1) To provide socio-economic infrastructure and services within the Municipality.
- 2) To demonstrate efficient and effective revenue mobilization strategies and management.
- 3) To outline environmental health and sanitation management to ensuring clean, safe and healthy environment in the Municipality.
- 4) To promote Local Economic activities in the Municipality especially for the vulnerable and the excluded.
- 5) To improve upon the logistics and human resources of the Municipality.
- 6) To enhance Good Governance and Civic Responsibility by strengthening the administrative set-up of the Municipality.
- 7) To promote effective Private Sector participation in the development of the local economy in the Municipality.
- 8) To facilitate the development and application of Information Communication and Technology (ICT) base of the Municipality.
- 9) To outline social accountability engagements with the social partners in the Municipality.

This part also outlines the status of programmes and projects undertaken in the Municipality in the period under review. In addition to the programmes and projects update, it gives an overview of financial inflows, funding sources and disbursements. It provides updates on core indicators and targets and update on critical development and poverty issues in the Municipality.

2.1 PROGRAMMES/PROJECTS STATUS 2016

The Municipal Assembly has initiated and implementing several socio-economic programmes and physical projects with funding from the District Assemblies' Common Fund (DACF), the District Development Facility (DDF), the Urban Development Grant (UDG) and the Capacity Support Fund (CSF).

Within the period under review the Municipality received an amount of **GH¢ 2,134,148** as its share of the District Assemblies' Common Fund out of a total annual budget of **GH¢ 3,381,119.00** representing sixty-three percent (63.12%) of the expected inflows.

Under the Urban Development Grant (UDG), the Municipality has initiated and implemented a total of sixteen (16) sub-projects with UDG types 1, 3 and 4. A total of **GH¢2,472,393.92** was allocated to the Municipality as its share for the implementation of the Local Government Capacity Support Project (LGCSP); out of which an amount of **GH¢2,777,679.34** was received for the implementation of the various sub-projects; of which an amount of **GH¢2,469,005.50**; representing eighty-nine percent (89%) has been disbursed for the implementation of the sub-projects in the Municipality.

All sub-projects are substantially completed and commissioned and handed over to the facility beneficiary communities for usage.

The major sources of Internally Generated Fund (IGF) for the last five (5) years are, rates, lands, fees, fines, licenses, investments and miscellaneous. All these major sources of IGF have experienced low collection rates for the past five (5) years as against total revenue estimates for the revenue items.

2.2 IMPLEMENTATION CHALLENGES OF PROGRAMMES/PROJECTS

The Municipal Assembly, like any Assembly in the Country is faced with the problem of inadequate and untimely releases of DACF as well as deductions of the DACF at source which are often outside the Municipal Assembly's Work Plans and Annual Budgets. These developments affect the smooth and timely implementation of programmes and projects in the Municipality which result in projects cost overruns. Further to this is the low internally revenue generation which negatively affects programmes and projects implementation and timely delivery.

2.3 PROGRESS REPORT ON DEVELOPMENT PROJECTS

No.	Name of Project/Activity	Location	Sector	Contract Sum		Date				Pay't to Date GH ₵	% Work Done	Source of Funding	Remarks
				Original	Revised	Awarded	Start	Expec. Comple	Actual				
1	Construction of CHPS Compound	Ampekrom	Health	135,015.65		10/19/2015	20/10/2015	20/12/2015		72,578.12	95%	DACF	On-going
2	Construction of CHPS Compound	Ekawso	Health	136,093.65		10/19/2015	20/10/2015	20/12/2015		115,890.31	99%	DACF	Ongoing
3	Construction of CHPS Compound	Monsie	Health	102,440.42		4/11/2015	2/5/2016	2/9/2016		34,191.28	80%	DACF	On-going
4	Construction of 3 unit classroom Block, Office and Store	Aprabonsu	Education	160,000.13		4/11/2016	2/5/2016	2/9/2016		55,617.28	85%	DACF	On-going
5	Construction of 3 unit classroom Block, Office and Store	Asaasefufuom	Education	162,577.88		4/11/2016	6/5/2016	6/9/2016		55,800.00	90%	DACF	On-going
6	Renovation of 1 No. 4 Unit Classroom Block	Church of Christ	Education	70,512.20		4/11/2016	6/5/2016	6/9/2016		60,896.90	100%	DACF	Completed

7	Completion of 3 No. 6 Unit Classroom with attached offices	Sitekese Wisiwisi/ Ohene Akuma	Education	96,134.85		4/11/2016	6/5/2016	6/9/2016		76,795.20	80%	DACF	On-going
8	Construction of 6 Unit Classroom Block, Office and Store	Nkawanda No. 1	Education	72,232.42	97,000.24	18/10/2007	2/11/2007	31/7/16		56,500.00	90%	DACF	On-going
9	Completion of cladding and partitioning of 6-unit classroom block	ASONA	Education	49,214.00		19/05/2016	2/6/2016	2/9/2016		49,214.00	100%	DACF	Completed & in use
10	Renovation of municipal assembly hall	KWMA	Governance	47,964.74			19/05/2016	19/7/2016		47,066.00	100%	DACF	Completed & IN USE
11	Rehabilitation of 3-unit classroom block	NKAWKAW PRESBY 'C' KINDERGARTEN	Education	45,145.80		19/05/2016	2/6/2016	2/9/2016		35,145.80	100%	DACF	Completed & in use
12	Construction of 1 no. 900mm x 1200mm 'u' culvert	ASUBONI RAILS	Transport	43,197.50		11/01/16	11/2/16	10/3/16		43,197.50	100%	DACF	Completed
13	Conversion of 2no. Garages into offices	KWMA	Administration	45,830.07		9/12/2015	24/12/15	24/4/16		44,247.06	100%	DACF	Completed & in use

14	Construction of Ino. Car garage	KWMA	Administration	19,517.63		9/12/2015	29/01/2016	29/4/2016	18,765.87	100%	DACF	Completed & in use
15	Construction of Health Centre	Asuborni Rails	Health	525,407.36			12/2/2015	14/9/2015	335,269.11	85%	DDF	On-going
16	Construction of 2 No. 6 seater KVIP latrine and urinal	Oframase and St. Michael Prim. School	Sanitation	31,000.00		12/12/14		12/3/15	27,900.00	100%	UDG-1	Completed
17	Drilling and mechanizing of boreholes	Domeabra, New Town and Accra Town	Water & Sanitation	150,043.00			18/02/2015	18/08/2015	129,242.46	100%	UGD-3	Completed and in use
18	Construction of concrete line "U" section drains 0.60m diameter (600m length) Phase II	Nkawkaw Total Junction to Church of Christ	Transport	190,000.00			2/24/15	24/8/25	189,832.80	100%	UDG-3	Work is completed
19	Mechanization of two new boreholes	Nkawkaw Mission and Nkawkaw Kuma	Water & Sanitation	88,919.25			18/02/2015	18/08/2015	78,692.08	95%	UDG-3	On-going
20	Drilling and mechanizing of 3no. boreholes	Akuajoo, Nkawkaw Central and Asuogya	Water & Sanitation	174,824.10			6/5/2016	6/9/2016	110,433.60	90%	UDG-4	On-going

22	Drilling and mechanizing of 2no. Boreholes	Dubia and Adoagyire	Water & Sanitation	117,937.60			6/5/2016	6/9/2016		92,290.60	100%	UDG-4	On-going
23	Construction of 3-unit classroom block, office, store and staff common room	Ahmadiyya Primary School, Nkawkaw	Education	190,000.00			2/5/2016	2/9/2016		130,970.25	100%	UDG-4	On-going
24	Construction of 3-unit classroom block, office, store and staff common room	Methodist Primary School, Nkawkaw	Education	191,894.23			6/5/2016	6/9/2016		150,565.50	90%	UDG-4	On-going
25	Construction of 3-unit classroom block, office, store and staff common room	S.D.A Primary School, Nkawkaw	Education	180,000.00			2/5/2016	2/9/2016		163,150.61	98%	UDG-4	On-going
26	Construction of 3-unit classroom block, office, store and staff common room	Ampekrom Primary School	Education	182,000.06			6/5/2016	6/9/2016		139,580.64	95%	UDG-4	On-going

TABLE 2. 1: 2016 DACF PROJECTS PAYMENTS STATUS

NO	PROJECT DESCRIPTION	LOCATION	CONTRACTOR	COMM. DATE	COMPL. DATE	CONT. AMNT	PREV. EXP	CURRENT PAY'T	TOTALS	BALANCE	%Pay'ts
1	Completion of cladding and partitioning of 1No. 6Unit classroom block	Asona	M/S Divine providence construction works.	06/06/16	07/06/16	49,214.00	33,914.00	5,174.00	39,088.00	10,126.00	79.4
2	Renovation of Butchers house	Nkawkaw central market	M/S Gyan Boat Services	29/07/16	29/10/16	55,890.90	28,690.00	24,405.98	53,095.98	2,794.92	95
3	Completion of 1no. 3unit classroom block, office, store and staff common room	Ahmadiya Primary School Nkawkaw	M/S KEKE MO KOSE Enterprise	30/05/16	30/08/16	96,134.85	14,420.23	14,532.91	28,953.14	67,181.71	30
4	Completion of 1no. 3unit classroom block, office, store and staff common room	Aprabonsu Primary School	M/S Divine providence construction works.	05/02/16	09/02/16	160,000.13	154,425.67	21,084.37	175,510.04	-15,509.91	109.7
5	Rehabilitation of 1no. 3unit classroom block, office, store and staff common room	Nkawkaw Presby' C' KG	M/S Keys construction and Engineering	20/06/16	29/07/16	45,145.80	42,745.80	2,400.00	45,145.80	0.00	0.0
6	Construction of 1No. 3Unit classroom block, office, store and staff common room.	Asasefufuom	M/S Keys construction and Engineering	29/04/16	29/08/16	162,577.88	129,494.70	17,599.58	147,094.28	15,483.60	90.5

7	Completion of 1no. 3unit classroom block, office, store and staff common room	Banka M/A JHS	M/S Keys construction and Engineering	07/09/16	29/10/16	44,156.20	25,351.69	16,596.69	41,948.38	2,207.82	95
8	Construction of 1no. CHPS center	Ampekrom	M/S Pokua Memorial Ventures	20/10/15	20/12/15	135,015.65	72,578.12	49,846.48	122,424.60	12,591.05	91
9	Completion of 1no. 2 unit classroom with office	Kwamang	M/S Awetey Company Ltd	26/09/16	10/02/16	30,887.00	15,000.00	15,887.00	30,887.00	0.00	0.0
10	Completion of 1no. 3unit classroom block, office, store and staff common room	Wisiwis M/A J.H.S	M/S Divine providence construction works.	26/09/16	26/11/16	73,256.50	15,000.00	54,593.68	69,593.68	3,662.82	95
11	Construction of 1no. CHPS center	Monsie	M/S Harriven Enterprise	05/02/16	09/02/16	102,440.42	46,064.53	32,079.25	78,143.78	24,296.64	76
12	Drilling and Mechanization 1No. Borehole	Fodoa	M/S Keys construction and Engineering	27/11/16	27/01/16	47,206.00	0.00	47,206.00	47,206.00	0.00	0.0
13	Drilling and Mechanization 1No. Borehole	Kwamang	M/S Keys construction and Engineering	27/11/16	27/01/16	38,436.00	0.00	38,436.00	38,436.00	0.00	0.0
14	Construction of 1No CHPS Center	Ekwaso	M/S Pokua Memorial Ventures	20/10/15	20/12/15	136,093.65	46,919.49	68,979.82	115,899.31	20,194.34	85
TOTAL COMMITMENTS										143,028.99	

TABLE 2.2: STATUS REPORT ON DACF MANDATORY PROJECTS

NO	PROJECT DESCRIPTION	LOCATION	SECTOR	CONTRACT SUM		Outstanding amount	DATES		%COMPL	REMARKS
				ORIGINAL(GHS)	Expenditure to date		START	COMPLETION		
1	Construction of 1 No. 6-unit classroom block with Ancillary Facilities at Attane Atta	Attane Atta	Education	71,568.00	51,065.84	20,502.16	06/05/16	06/09/16	100%	Completed
2	Construct 3 unit Classroom Block, Office and Store.	Asasefufuom	Education	162,577.88	55,800.00	106,777.88	06/05/16	06/09/16	100%	Completed
3	Complete 3 unit Classroom Block, Office, Store and Staff Common room	Aprabonsu	Education	160,000.13	55,617.28	104,382.85	06/05/16	06/09/16	100%	Completed
4	Renovation of 1 No. 3-unit Classroom Block	Kwamang	Education	172,392.15	—	172,392.15	29/11/16	01/03/17	100%	Not Paid
5	Renovation of 4-unit Classroom Block	Church of Christ Nkawkaw	Education	70,512.20	65,191.90	5,320.30	06/05/16	06/09/16	100%	Completed

6	Completion of Cladding and Partitioning of 6 No. Classroom Block	Asona	Education	49,214.00	49,214.00	–	02/06/16	02/09/16	100%	Completed
7	Rehabilitation of 3-Unit Classroom Block	Nkawkaw Presby ‘C’ Kindergarten	Education	45,145.80	45,145.80	–	02/06/16	02/09/16	100%	Completed
8	Completion of 3- Unit Classroom Block	Banka	Education	44,156.20	41,948.39	2,207.81	29/07/16	29/10/16	100%	Completed

TABLE 2.3: TREND OF UDG4 EXPNDITURE STATUS

NO	PROJECT DESCRIPTION	LOCATION	CONTRACTOR	COMM. DATE	COMPL. DATE	CONTRACT AMNT	PREV. EXP.	CURRENT PAYMENT	TOTAL PAYMENTS	BALANCE	%
1	Drilling and mechanization of 2no. Boreholes.	Adoagyire and Dubai	M/S Keys Construction and Engineering	06/05/2016	06/09/2016	117,937.60	92,290.60	9,564.60	101,855.20	16,082.40	86.4
2	Drilling and mechanization of 3no. Boreholes	Asuogya, Nkawkaw central and Akuajoo (mococo)	M/S Keys Construction and Engineering	06/05/2016	06/09/2016	174,824.10	110,433.00	40,550.00	150,984.46	23,840.64	86.4

3	Construction of concrete line 'U' section drain (0.60km) from total junction to church of christ (600m length)	Nkawkaw	M/S Osei Apeani Company Ltd	18/07/2016	18/10/2016	271,459.44	-	245,828.46	245,828.46	25,630.98	90.6
4	Construction of 1no. 3unit classroom block, office, store and staff common room	Apekrom J.H.S	M/S Pokua Memorial Ventures	02/05/2016	06/09/2016	182,000.06	109,013.94	30,566.70	147,558.64	34,441.42	81.1
5	Construction of 1no. 3unit classroom block, office, store and staff common room	Ahmadiya primary school Nkawkaw	M/S Keke Mo Kose Enterprise Ltd	02/05/2016	02/09/2016	190,000.00	130,970.25	34,089.75	171,000.00	19,000.00	90.0
6	Construction of 1no. 3unit classroom block, office, store and staff common room	Methodist Primary School	M/S ADS Elite Engineering Ghana Ltd	06/05/2016	06/09/2016	191,894.23	60,000.00	90,565.20	150,565.20	41,329.03	78.5
7	Construction of 1no. Biogas with installations	New Slaughter House Nkawkaw	M/S Cephill Company Ltd	06/07/2016	06/10/2016	93,575.04	61,650.00	22,214.42	83,864.42	9,710.62	89.6
8	Construction of 1no. 3unit classroom block, office, store and staff common room	S.D.A Primary School Nkawkaw	M/S Issahaku L Company Ltd	02/05/16/	02/09/2016	180,000.00	140,737.82	22,412.70	163,150.52	16,849.48	90.6

TABLE 2. 3: TREND OF DDF EXPENDITURE STATUS

NO	PROJECT DESCRIPTION	LOCATION	CONTRACTOR	COMM. DATE	COMPL. DATE	CONTRACT AMNT	PREV. EXP.	CURRENT PAYMENT	TOTAL PAYMENTS	BALANCE	%
1	Construction of 1no. Health Center	Asuboni Rails	M/S Ikeboa Company Ltd	09/03/2016	12/09/2016	525,407.36	335,269.00	96,696.00	431,965.00	93,442.36	82

TABLE2.4: SUMMARY OF UDG4 EXPENDITURE STATUS

No	Project Description	Contractor	Contract Sum	Payments	%	Balance
1	Construction of 3-Classroom blk @ Ahmadiya	M/S Keke Mo Kose	190,000.00	180,500.00	95.00	9,500.00
2	Construction of 3-Classroom blk @ Ampekrom	M/S Pokua Ventures	182,000.06	167,060.42	91.79	14,939.64
3	Drilling and mechanization of 2 Boreholes @Adoagyire & Dubai	M/S Keys Const. & Engineering Ltd	117,937.60	108,144.00	91.70	9,793.60
4	Drilling and mechanization of 3 Boreholes @ Asuogya, Nkawkaw C. @Akuajoo	M/S Keys Const. & Engineering Ltd	174,824.40	161,099.95	92.15	13,724.45

5	Construction of 0.60km of 'U' drains @ total Junction - Church of Christ	M/S Osei Apeani Co. Ltd	271,459.44	245,828.46	90.56	25,630.98
6	Construction of 3- Classroom blk@ Methodist Primary School	M/S ADS Elite Eng. Gh. Ltd	191,894.23	180,074.10	93.84	11,820.13
7	Construction of 3-Classroom Block @ SDA Primary School	M/S Issahaku L Co. Ltd	180,000.00	171,000.00	95.00	9,000.00
8	Construction of Biogas plant with installations at New Slaughter house @ Nkawkaw	M/S Cephil Company Ltd	93,575.04	83,864.42	89.62	9,710.62
TOTALS			1,401,690.77	1,297,571.35	92.57	104,119.42

TABLE 2. 5: SUMMARY OF UDG 1-4 FINANCIAL DISBURSEMENT UPDATES: INVESTMENT GRANT							
UDG Type	No. of Sub-projects	Amount Allocated	Amount Received	Amount Disbursed	Balance	Disbursement Rate (%)	Remarks
UDG-1	5	446,919.45	459,307.05	459,307.05	0.00	100	Sub-projects completed and in use

UDG- 1 Cont.	1	90,000.00	83,864.42	83,864.42	0.00	100	Work is completed
UDG -2	0	0.00	0.00	0.00	0.00	0	Not Qualified
UDG- 3	4	677,490.28	984,799.88	984,799.88	-	100	Work is completed
UDG-4	6	1,257,984.19	1,249,707.99	941,033.70	308,674.29	75	75% disbursement
Total	16	2,472,393.92	2,777,679.34	2,469,005.05	308,674.29	89	General threshold met

TABLE2. 6: UPDATES ON CAPACITY SUPPORT FUND (CSF 1, 3&4)

CSF Type	sub-project	Allocation	Amount Received	Amount Disbursed	%	Remarks
CSF - 1	Modernization of Revenue Collection. Processing and presentation (Phase I)	82,400.00	82,400.00	82,400.00	100	Assignment completed

CSF-2	Nil	-	-	-	0	Not Qualified
CSF -3	Modernization of Revenue Collection Processes and Preparation of Revenue Enhancement Plan (Phase II)	140,000.00	140,000.00	140,000.00	100	Assignment completed
CSF -4	Assets management database	152,400.00	74,000.00	74,000.00	100	Assignment completed
TOTALS		374,800.00	296,400.00	296,400.00	100.00	

TABLE2.7: LIST OF DEVELOPMENT PROJECTS INITIATED

No	Project description	Location	Sector	Source of funding
1	Construction of 1No. Community durbar grounds with ground paving, 12-seater W.C toilet, 4No. Bathrooms, 4No. urinal bowls and drilling and mechanization of boreholes	Nkawkaw-Adoagyire	Economic	UDG-5
2	Procurement of 1,500 pieces of dual desks	Dept, of Education	Education	UDG-5

3	Renovation of 3-unit classroom block	Kwamang M/A primary school, Nkawkaw	Education	DACF
4	Construction of 1No, 2-storey Community Library, Computer Laboratory and drilling, Mechanization of 1no, borehole with overhead tank	Adoagyire-Nkawkaw	Education	UDG-5
5	Procurement of 50 sets of desktop computers, 50 pieces of UPS and accessories	Adoagyire-Nkawkaw (New Library)	Education	UDG-5
6	Procurement of Consultancy Services for Assets Management database	Nkawkaw	Administration	CSF
7	Culvert construction and gravelling	Nsuta	Transport	MR&H
8	Minor drain repairs (Routine maintenance)	Nkawkaw Township	Transport	MR&H
9	Replacement of road signs	Nkawkaw Township	Transport	MR&H

TABLE: 2.8 YEARS REVENUE PERFORMANCE AND TREND ANALYSIS

YEAR	2012			2013			2014			2015			2016		
ITEMS	BUDGET	ACTUAL	%	BUDGET	ACTUAL	%	BUDGET	ACTUAL	%	BUDGET	ACTUAL	%	BUDGET	ACTUAL	%
RATES	262,007.00	216,816.00	25	165,800.00	148,908.00	16	234,680.00	202,040.00	25	231,930.00	227,587.00	24	250,346.00	190,780.00	18.64
LAND	59,470.00	55,453.00	6	64,400.00	72,554.00	8	35,050.00	40,707.00	5	71,750.00	70,274.00	7	123,986.00	102,807.00	10.05
RENT	65,412.00	163,226.00	19	57,676.00	38,943.00	4	20,524.00	2,182.00	0.3	534.00	340.00	0.04	77,687.00	71,001.00	6.94
FEES	99,236.00	81,460.00	9	161,190.00	98,194.00	11	147,828.00	90,300.00	11	167,166.00	94,400.00	10	123,167.00	106,435.00	10.40
FINES	190,764.00	178,343.00	20	280,826.00	178,219.00	19	186,602.00	186,565.00	23	211,000.00	208,449.00	22	173,705.00	178,633.00	17.46
LICENSES	164,851.00	131,934.00	15	199,534.00	181,034.00	20	132,221.00	142,850.00	18	211,965.00	154,110.00	16	252,225.00	220,078.00	21.51
INVT INC.	6,000.00	6,143.00	0.7	-	-	-	43,152.00	600.00	0.1	47,600.00	48,209.00	5	21,790.00	28,576.00	2.79
MISC.	34,894.00	20,765.00	2	-	-	-	11,955.00	660.00	0.1	18,000.00	6,084.00	0.6	376.00	3,632.00	0.35
TOTAL	882,6340	854,140	97	929,426	717,852	77	812,012	665,904.00	82	959,945	809,453	84	1,023,282	901,942.00	88.142

CHART2.1: MAJOR IGF ITEMS TREND 2012-2016

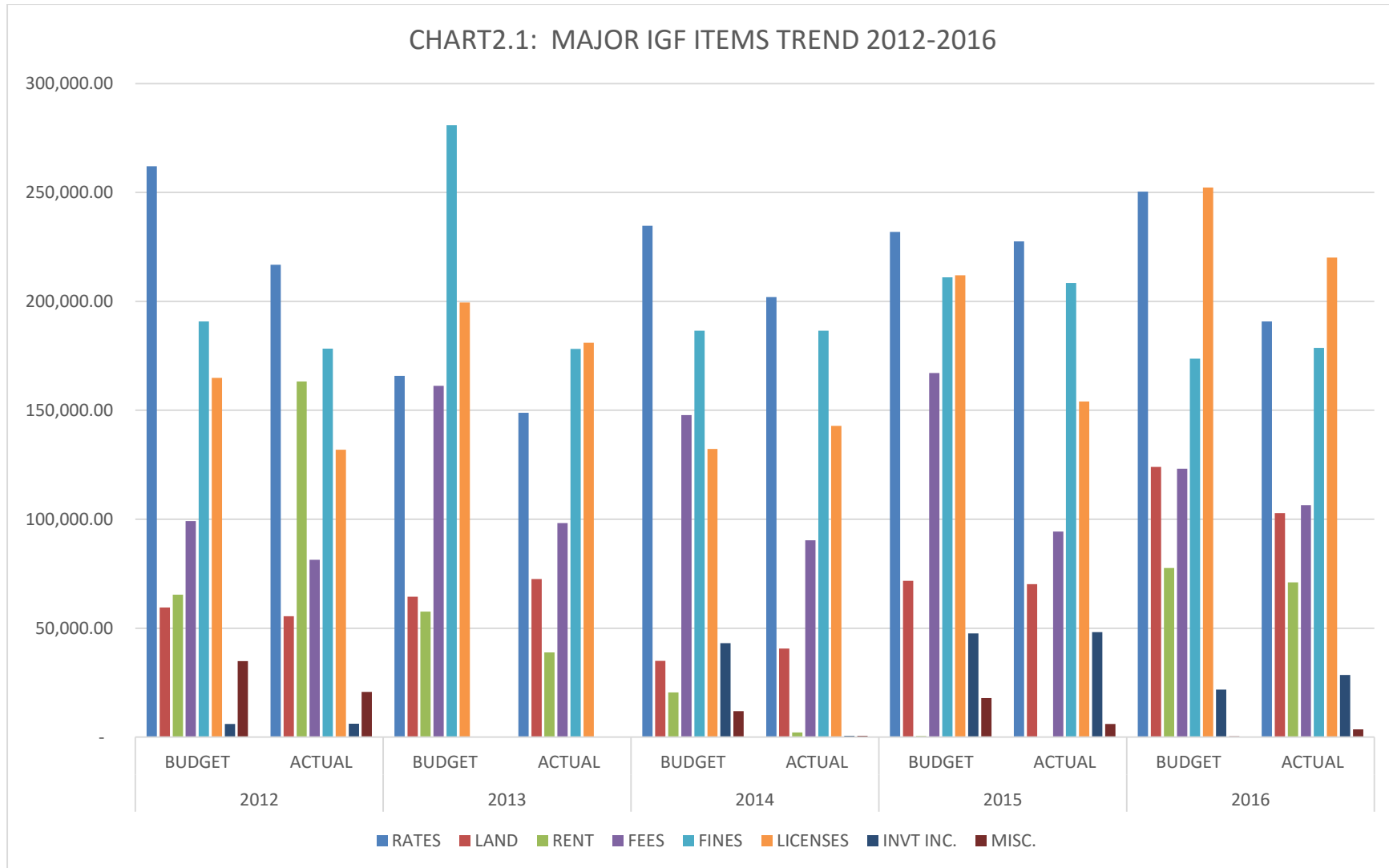
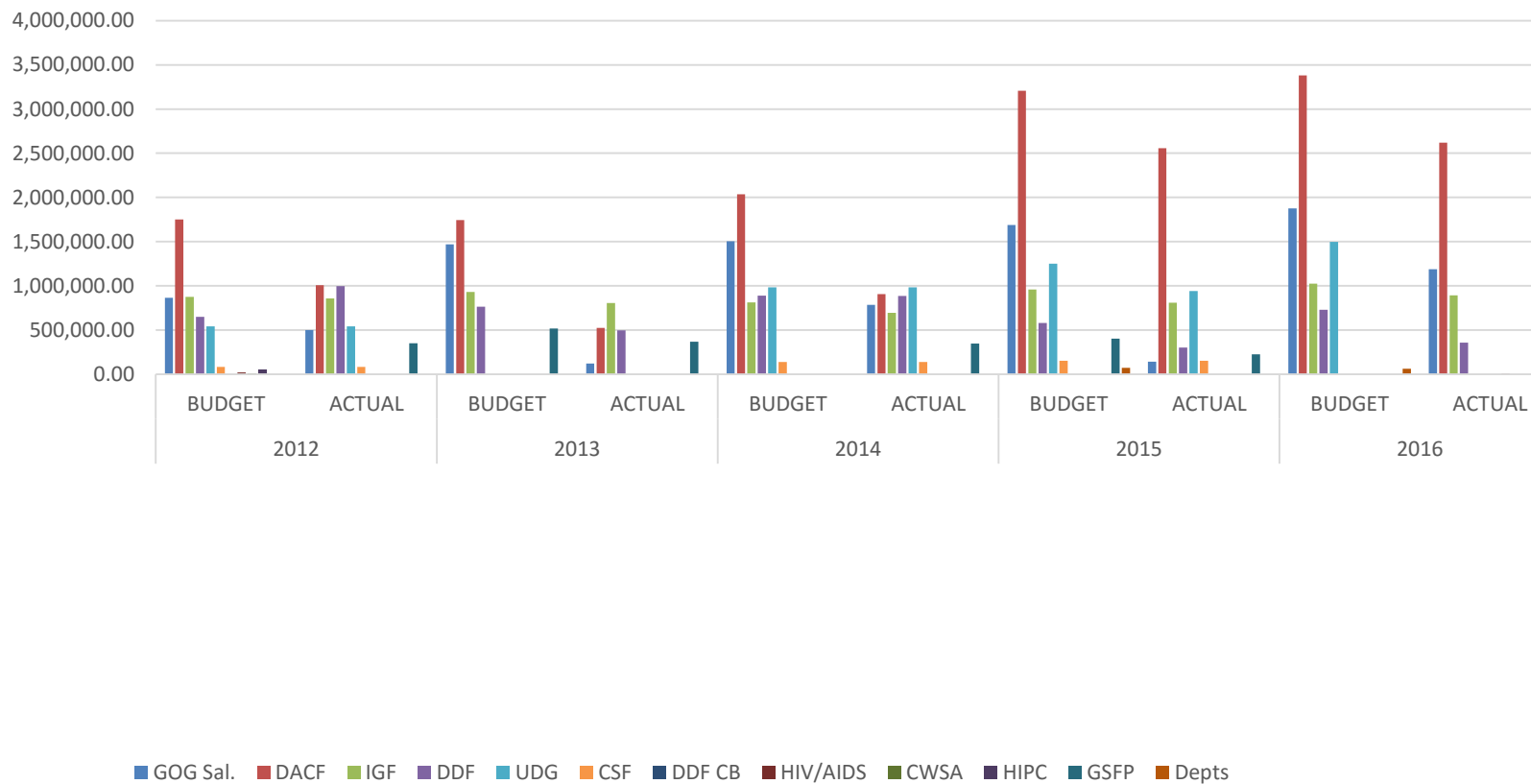


TABLE 2.9: EXTERNAL INFLOWS EXPENDITURE PERFORMANCE 2012-2016

YEAR	2012			2013			2014			2015			2016		
ITEMS	BUDGET	ACTUAL	%	BUDGET	ACTUAL	%	BUDGET	ACTUAL	%	BUDGET	ACTUAL	%	BUDGET	ACTUAL	%
GOG Sal.	865,903.00	500,285.00	58	1,468,548.10	122,379.00	8	1,505,769.00	784,025.69	52	1,687,402.00	142,701.71	8.46	1,876,833.62	1,187,952.72	63.3
DACF	1,752,638.05	1,005,990.63	57	1,745,370.90	524,345.59	30	2,035,792.90	906,532.80	45	3,205,760.12	2,558,437.83	79.81	3,381,119.20	2,620,975.25	77.5
IGF	876,634.00	856,996.00	98	929,425.64	805,037.43	87	812,012.00	695,611.05	86	959,945.00	810,331.21	84.41	1,023,283.08	891,650.22	87.1
DDF	650,000.00	997,813.22	154	763,538.00	496,442.00	65	889,108.00	885,297.14	100	580,621.00	301,185.00	51.87	728,289.40	358,858.58	49.3
UDG	543,171.47	543,171.47	100	-	-	-	984,799.88	984,799.88	100	1,249,707.99	941,033.70	75.30	1,495,700.00	-	0.0
CSF	82,400.00	82,400.00	100	-	-	-	140,000.00	140,000.00	100	152,400.00	152,400.00	100.00	-	-	0.0
DDF CB	-	-	-	-	-	-	-	-	0	-	-	0	-	-	-
HIV/AIDS	20,000.00	-	-	-	-	-	-	-	0	-	-	-	-	5,758.55	-
CWSA	10,000.00	-	-	-	-	-	-	-	0	-	-	-	-	-	-
HIPC	45,000.00	-	-	-	-	-	-	-	0	-	-	-	0	0	-
GSFP	0	350,642.00	-	516,458.00	366,916.53	71.00	0	348,690.80	0	402,467.50	224,206.80	55.708	0	0	-
Depts	0	0.00	-	0.00	0.00	0.00	0	0	0	71,553.20	0	0	62,728.00	5,477.33	8.73

CHART2.2 EXTERNAL INFLOWS BUDGET VRS EXPENDITURE



2.4 EFFORTS TO GENERATE FUNDS

As part of the efforts to help boost revenue generation, the Assembly has put in place a Revenue Mobilization Task Force to help boost revenue generation in the Municipality. In addition, a number of meetings were organized for the Revenue Collectors in the period under review to improve upon their performance. Some rate defaulters were also prosecuted to serve as a deterrent to others. The Media Network on collaboration with the Municipal Assembly organized radio engagement with the public to discuss strategies for revenue payment and collection. The provision of motor bikes and the radio sensitization were all geared towards shoring up internal revenue generation and mobilization.

Other challenges affecting revenue generation in the Municipality are enumerated below:

- Poor road network
- Inadequate logistics to support revenue collectors e.g. Motorbikes/bicycles, raincoats, etc.

2.5 DISBURSEMENTS FOR THE 2016

The funds received in the Municipality were disbursed to finance ongoing and new programmes, projects and service delivery. Funds were disbursed in line with the annual action plan and budget. The disbursements covered administration, service, investment, special projects and miscellaneous.

CHAPTER THREE

3.0 UPDATE ON CRITICAL DEVELOPMENT AND POVERTY ISSUES

3.1 GHANA SCHOOL FEEDING PROGRAMME

The Ghana School Feeding Programme was expanded to cover 19 schools in the period under review benefiting a total population of 4,625 pupils in the Municipality. Total of 2,412; representing Fifty-two percent (52.2%) males are benefiting from the programme in the beneficiary schools as against 47.8% female beneficiaries. The implementation of the Programme is expected to improve enrolment and retention rate in the beneficiary schools. It is therefore further expected that the expansion exercise to include more schools will increase school participation rate in the Municipality. The major challenge in the implementation is the untimely release of funds to facilitate the smooth implementation of the programme. Funds are released directly from the Ministry of Gender, Women and Social Projection to the Suppliers and Caterers which makes tracking of funds releases difficult at the local level.

TABLE 3.1: LISTS OF SCHOOLS BENEFITING FROM THE GSFP-2016

S/N	Beneficiary Schools	Males	Female	TOTAL
1	KOFI DEDE CLUSTER OF SCHOOLS	191	139	330
2	JAMASI NO. 2 KG & PRIM.	190	180	370
3	EKAWSO MA KG & PRIM.	82	81	163
4	KWAHU NSABAH MA KG & PRIM.	181	161	342
5	MONSIE MA KG & PRIM.	117	102	219
6	MPRAESO AMANFROM MA KG & PRIM.	170	170	340
7	DANTENG METHODIST MA KG & PRIM.	109	98	207
8	NKAWKAW ISLAMIC KG & PRIM.	182	158	340
9	ASUBONI RAILS ISLAMIC KG & PRIM.	186	228	414
10	KAWHU JEJETI PRESBY KG & PRIM.	112	108	220
11	ESAASE METHODIST KG & PRIM.	106	114	220
12	ATAASO R/C KG & PRIM.	82	78	160
13	OWUSUKROM MA KG & PRIM.	82	81	163
14	AKROKO MA KG & PRIM.	100	80	180
15	ATIBIE NKWANTA M.A KG & PRIM.	79	63	142
16	AMPEKROM M.A KG & PRIM.	133	97	230
17	NSUTA AWEREGYA M.A KG & PRIM.	110	95	205
18	KWADJO NKANSAH M.A KG & PRIM.	100	100	200
19	AKROKO M/A BASIC SCHOOL	100	80	180
TOTAL		2,412	2,213	4,625

3.2 LIVELIHOOD EMPOWERMENT AGAINST POVERTY (LEAP).

The Kwahu West Municipality has expanded the coverage for the implementation of the Livelihood Empowerment Against Poverty (LEAP) Programme. Three (3) Communities have been added to the existing beneficiary communities; these are Kwahu, Jejeti and Nsaba. New members have been registered to benefit from this social protection programme.

During the year under review, Seven Hundred and Four (704) Leap beneficiaries have been enrolled onto the National Insurance Scheme with new registration and renewals.

3.3 LOCAL ECONOMIC DEVELOPMENT

3.3.1 National Board for Small Scale Industries (NBSSI)

The informal sector constitutes the highest economic activities in the Municipality with a majority of the people engaged in agriculture and its related business activities. Other economic activities include the service sector; mostly hairdressing and fashion designing.

To promote Local Economic Development activities in the Municipality, the Business Advisory Center (BAC) was established to provide business development services to the informal sector players to improve their contribution to the Local Economy.

Table 3.2 shows the activities initiated and implemented during the period under review under the BAC in the Municipality

TABLE 3.2: IMPLEMENTATION OF SKILL TRAINING PROGRAMMES

Activity	Location	Male	Female	Total
Basic CBT in fashion design and production	Nkawkaw	3	25	28
Basic marketing and customer relations	Nkawkaw	1	21	22
Basic CBT in Beads making	Nkawkaw	1	19	20
Business counselling	Nkawkaw	14	36	50
Youth in Agri-Business (1 poultry & 1 piggery)	Adidome Farm Institute	2	-	2

TABLE 3.3 CO-OPERATIVES

S/N	PERFORMANCE INDICATORS	TARGET	ACHIEVEMENT	REMARKS/CHALLENGES
1	Number of communities sensitized in the year	32	27	Sensitization was carried out to a lot of farming communities more especially under the hunger-RAFID program
2	Number of group seeking registration in the year	18	14	Education and registration procedures were given to the proposed societies
3	Number of societies registered in the year	18	6	Six (6) cooperative farmers' societies were registered, all under the hunger project
4	Education and Training in the year	28	25	Education & Training were done for cooperative farmers, transport, corn millers, artisans and industrial cooperative society
5	Number of participants at Education and Training in the year	480	425	Attendance was very encouraging.
6	Number of stakeholders meeting in the year	10	8	Eight stakeholders meetings, including hunger project, Assembly, heads of departments and official from local government secretariat.
7	Number of cooperative societies audited in the year	6	5	Five (5) societies account were audited, i.e. credit unions and distillers
8	number of cooperative	24	15	The coverage was mostly Nkawkaw township due to lack of funds

	societies visited in the year			
9	Amount of non-tax revenue collected in the year	540	325	Monies collected and accordingly paid to the regional cooperative office account.

3.4 MUTUAL HEALTH INSURANCE

In line with the Ghana Poverty Reduction Strategy (GPRS), the government has initiated a policy to deliver accessible, affordable and good quality health care to all Ghanaians especially the poor and the most vulnerable in society. In 2004, the Mutual Health Insurance Scheme was launched in the District to replace the then out-of-pocket payment for health care at the point of service delivery which was popularly known as “Cash and Carry”.

Table 3.4 shows the distribution of beneficiary population of the National Insurance Scheme in the Municipality. During the period under review a total of 59,993 persons were registered with scheme of which 18,066; representing 30% were from the informal sector. The under 18 years and over 65 years constitute 64.4% of the beneficiary population in the Municipality.

TABLE 3.4 TREND OF NHIS BENEFICIARY POPULATION

YEAR	FORMAL			INFORMAL			-18			65+ YEARS			TOTALS
	M	F	TOTAL	M	F	TOTAL	M	F	TOTAL	M	F	TOTAL	
2012	982	605	1,587	3,760	7,961	1,1721	10,200	10,636	20,836	1,907	3,403	5,310	39,454
2013	252	765	1,017	6,853	1,4026	2,0879	5,210	16,004	21,214	1,982	3907	5,889	47,982
2014	1,788	1,243	3,031	7,956	1,6131	2,4087	16,702	17,318	24,020	2,152	4,248	6,400	67,538
2015	1,477	1,183	2,660	7,144	1,3185	2,0329	15,917	16,097	32,014	2,872	3,551	6,423	61,426
2016	1,789	1,519	3,308	5,995	1,2071	18,066	15,171	15,217	30,388	2,819	5,412	8,231	59,993

3.4 DISASTER MANAGEMENT

The Municipal NADMO embarked on a number of sensitization programmes geared towards disaster prevention and management including pre-flood awareness campaign, fire awareness campaign and sensitization on Ebola and Cholera. There was no any major disaster recorded within the period under review.

3.5 WATER AND SANITATION

The Municipal Assembly joined the rest of the nation to undertake the monthly clearing-up exercise (national sanitation day). Officers from all the Departments of the Assembly joined the Police and Fire Service Officers to undertake the exercise. The Assembly has mechanized ten (10) boreholes and franchised to individual operators under Public-Private-Partnership arrangements. More boreholes are under construction to provide portable water to the people in the Municipality. A number of public and institutional latrines are being constructed to reduce ODF in the Municipality and to improve the hygiene condition in the Municipality.

3.6 HIV/AIDS

The Assembly has organized programmes on prevention and the effects of stigmatization of People Living with HIV/AIDS in the period under review. During the period under review, a total of 17,667 persons were screened for HIV/AIDS; with 11,356 representing 64.3% being females tested and 6,311 being males tested. In 2016, AIDS/HIV related deaths constituted 40 persons of which 23 (57.5%) were females whilst 17 were males. An intensive HIV/AIDS testing was embarked during the Kwahu Easter celebration in the Municipality that saw massive participation by community members. Activities undertaken included Voluntary Counselling for HIV/AIDS and syphilis, radio discussion and distribution of condoms.

The HIV/AIDS affected people are considered vulnerable since they are mostly marginalized against and do not have equal access to social protection and services. In spite of the above, some interventions put in place by the Municipal Assembly have entailed the following:

- Vigorous campaign against the spread of the disease in many communities in the Municipality

- Implementation of preventive and behavioural change activities in many communities in the Municipality.
- Implementation of PLAC methodology in the Municipality and,
- Preparation of HIV/AIDS strategy plan

TABLE 3.5: PEOPLE LEAVING WITH HIV/AIDS

YEAR	PERSONS COUNSELLED/SCREENED			NUMBER TESTED POSITIVE			VCT CENTERS ESTABLISHED
	M	F	TOTAL	M	F	TOTAL	
2012	692	3647	4339	95	228	323	31
2013	381	3162	3542	67	133	200	35
2014	536	5585	6121	103	218	321	35
2015	430	5574	6004	67	273	340	35
2016	6311	11386	17,667	83	277	360	45

CHAPTER FOUR

4.0 DECENTRALIZED DEPARTMENTAL PROGRESS REPORTS

4.1 DEPARTMENT OF EDUCATION SERVICE

The Education, Youth and Sports Department of the Assembly is responsible for pre-school, special school, basic education, youth and sports development or organization and library services within the Municipality.

The Kwahu West Municipal Education Department seeks to provide increased access and quality educational opportunities to all children of school going age in the Municipality through sound management practices with active involvement of all stakeholders and the creation of enabling teaching and learning environment.

The Kwahu West Municipal Department of Education seeks to:

1. Improve the quality of Education through effective teaching and learning
2. Seek human values in individual discipline, competences, dedication and accountability
3. Promote Science/Technology and Mathematics education.

TABLE 4.1: KG INFRASTRUCTURE/ACCESS

Indicator	Number of Schools		Total	Annual Targets		Gap	
	Public	Private		Public	Private	Public	Private
Number of schools	75	52	127	80	50	5	2
Number of Classrooms	162	95	257	200	100	38	5

TABLE 4.2: KG ENROLMENTS

SECTOR	GENDER		Total	Annual Targets		Total	Gap
	Male	Female		Male	Female		

Public	2,860	2,751	5,611	3,450	3,350	6,800	1,189
Private	1,345	1,214	2,559	1,310	1,,290	2,600	41
Totals	4,205	3,965	8,170	4,760	4,640	9,400	1,230

TABLE 4.2: PRIMARY SCHOOL INFRASTRUCTURE/ACCESS

Indicator	Number of Schools		Total	Annual Targets		Gap	
	Public	Private		Public	Private	Public	Private
Number of schools	78	50	128	80	50	2	0
Number of Classrooms	472	247	719	272	250	8	0

TABLE 4.3: PRIMARY SCHOOL ENROLMENTS

SECTOR	GENDER		Total	Annual Targets		Total	Gap
	Male	Female		Male	Female		
Public	7,099	6,799	13,898	8,310	7,690	16,000	2,102
Private	2,955	2,880	5,835	2,820	2,780	5,600	0
Totals	10,054	9,679	19,733	11,130	10,470	21,600	2,102

Source: Department of Education

There are 127 Kindergartens schools with 257 classrooms in the Municipality with 75 being public KGs and 52; representing sixty-nine percent (69.3%) being privately operated. The total enrolment levels of both public and private KGs is 8,170 of which 5,611; representing sixty-nine percent (69%) is public enrolment, whilst 2,559; thirty-one percent (31.3%) enrolments in the private KG schools.

The total number primary schools (Public & Private) in the Municipality is 128 primary schools with total of 719 classrooms. There 78 public primary schools and 50 private schools located in the Municipality with a total enrolment of 19,733 of which forty-nine percent (49%) being female enrolments in both public and private primary schools.

According to the 2010 Population and Housing Census (2010 PHC) there are a total of 35,401 school going age population in the Municipality. A total of 27,903 pupils are enrolled in both public and private KGs and primary schools; representing seventy-nine percent (78.8%) of school going age enrolled in schools in the Municipality.

There are 61 public Junior High Schools (JHS) and 38 Private JHS with total enrolment level of 7,837. The female enrolment rate for both private and public is forty-nine percent whilst the male enrolment rate is 51% at the same level in the Municipality.

TABLE 4.4: JHS INFRASTRUCTURE/ACCESS

Indicator	Number of Schools		Total	Annual Targets		Gap	
	Public	Private		Public	Private	Public	Private
Number of schools	61	38	99	60	32	0	0
Number of Classrooms	216	93	309	210	85	6	0

TABLE 4.5: JHS ENROLMENTS

SECTOR	GENDER		Total	Annual Targets		Total	Gap
	Male	Female		Male	Female		
Public	3,108	3,034	6,142	3,400	3,200	5,800	0
Private	853	842	1,695	820	880	1,700	0
Totals	3,961	3,876	7,837	4,220	4,080	7,500	0

TABLE 4.6: SHS INFRASTRUCTURE/ACCESS

Indicator	Number of Schools		Total	Annual Targets		Gap	
	Public	Private		Public	Private	Public	Private

Number of schools	1	4	5	2	7	0	2
Number of Classes	36	41	86	40	55	4	14

TABLE 4.5: SHS ENROLMENTS

SECTOR	GENDER		Total	Annual Targets		Total	Gap
	Male	Female		Male	Female		
Public	939	865	1,804	1,050	950	2,000	196
Private	679	715	1,394	900	800	1,700	306
Totals	1,618	1,580	2,788	1,950	1,750	3,700	502

The Municipal Education Department organized the 2016 Basic Education Certificate Examination for 2,288 candidates in the Municipality. The sex distribution of the candidates is shown on table

TABLE 4.5 2016 BECE Candidates:

Male candidates	Percentage (%)	Female candidates	Percentage (%)
1,157	51%	1,131	49%

4.2 The "DREAM GHANA WEEK"

Basic Schools and Second Cycle Schools observed the Dream Ghana week with the theme; **Youth of Ghana: The Future We Want to Build for Ourselves** from September 26th to October 2nd 2016.

4.3 DEPARTMENT OF HEALTH:

The department of Health at the Municipal Assembly level consists of the office of the Municipal Medical Officer of Health and the Environmental Health Unit.

(2) The functions of the Department of Health among others are to:

- (a) advise on the construction and rehabilitation of clinics and health centers or facilities;
- (b) assist in the operation and maintenance of all health facilities under the jurisdiction of the regional and district coordinating council;
- (c) assist to undertake health education and family immunization and nutrition programmes;
- (d) coordinate works of health centers or posts or community based health workers;
- (e) facilitate collection and analysis of data on health;
- (f) promote and encourage good health and sanitation;
- (g) facilitate diseases control and prevention

Objectives of the Department of Health

1. Bridge Equity Gaps in Geographical Access to Health Services

2. Ensure Sustainable Financing for Health care Delivery and financial protection for the poor
3. Improve Efficiency in Governance and Management of the Health System
4. Improve Quality of Health Service Delivery including Mental Health Services
5. Enhance National Capacity for the attainment of health-related SDGs and sustain gains
6. Intensify Prevention and Control of Communicable and Non-communicable Diseases

4.4 KEY ISSUES AT THE BEGINNING OF 2016

1. High Maternal mortality (184/100,000 LBs)
2. High stillbirth rate (25/1,000 LBs)
3. High prevalence of teenage pregnancy (13.84%)
4. Low EPI Coverages (Measles Rubella 2 – 66.8%, TD2+ - 72.8%)
5. Low TB Death rate (12.23%).
6. High HIV positive rate among the general populace (17.04%)
7. High Malaria under 5 admission (1,164 – 43.66%)
8. Irregular supply of health commodities

4.5 Health service delivery

The infrastructure of the health delivery system of the Municipality consists of 1 Mission Hospital at Nkawkaw, 2 private Hospitals located at Nkawkaw, one of which is newly commissioned ultra-modern facility, 1 maternity home, 1 Diagnostic centre all at Nkawkaw and 11 reproductive and child health centres at Danteng, Apradang, Jamasi, Aweregya, Jejeti, Fodoa, Wawase, Nkawanda No.2, Asuboni Rails, Nkawkaw RGH. There is one accredited NHIA pharmacy shop (NARDOG PHARMACY) Holy Family PHC. There are 5 private Maternity Clinics all located at Nkawkaw, 2 Homeopathic Clinics and over 94 Traditional Birth Attendants of which 68 have been trained and 77 Herbalists and spiritual

Healers. There are 21 demarcated CHPS centres of which 11 are operational whilst some are under construction.

4.6 KEY ACTIVITIES IMPLEMENTED JAN-DEC 2016

- **Child Health Promotion week**
- **Technical supportive visits to Health Facilities (Malaria, TB, CHPS)**
- **Conducted various trainings in Maternal Health, Health Promotion, Malaria, TB, CHPS for both health staff and volunteers.**
- **School-Age Mass drug administration**
- **Held durbars in communities**
- **Health education and promotion in various communities, OPDs, CWCs, ANCs, Life FM, Obuoba FM**

ANC ASSOCIATED INDICATORS -2/2

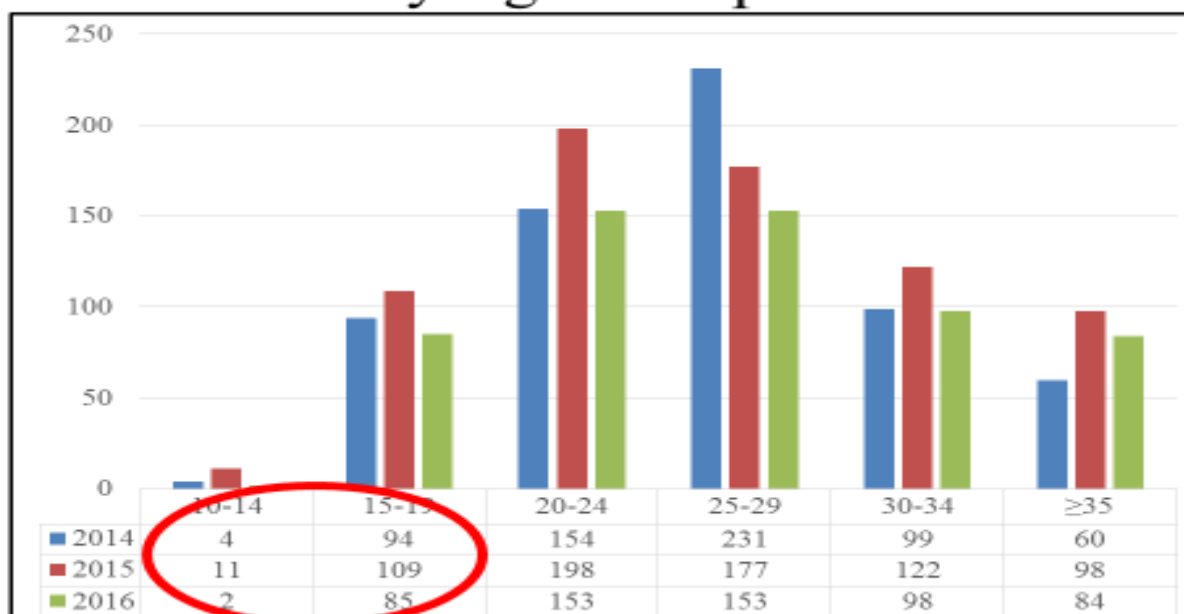
Indicator	2014	2015	2016		
ANC Registrants	5,349	4,416	4,677		
Risk Groups	Teenage Preg.	686	611	611	
	% Teenage Preg.	12.82	13.84	13.06	↓
	35+ Years	578	528	591	
	% 35+ Years	10.81	11.96	12.64	↑
	Parity 5+	405	421	513	
	% Parity 5+	7.57	9.53	10.97	↑
	3 rd Trimester Reg.	473	421	473	
	% 3 rd Trimester Reg.	8.84	9.53	10.11	↑

8

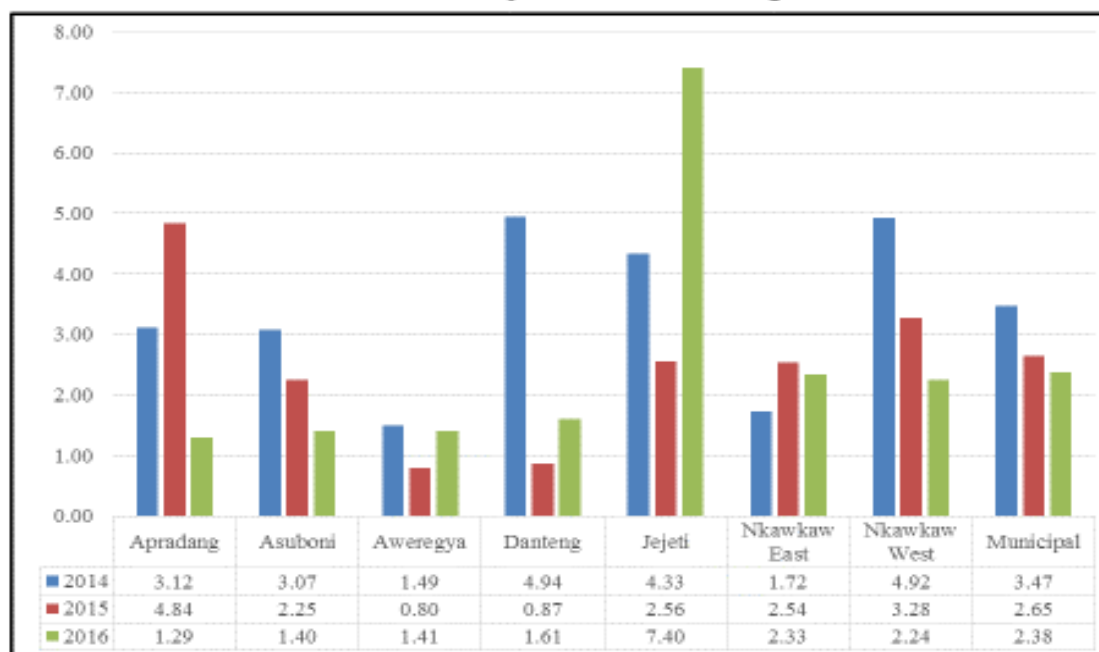
DELIVERIES AND ASSOCIATED INDICATORS

Indicators		2014	2015	2016
Skilled Delivery	Mothers	4,268	3,808	4,010
	Babies	4,383	3,909	4,093
Skilled Delivery Coverage (Babies)		107.74	94.12	93.66 ↓
Live Births		4,283	3,813	4,007
Birth Weight Below 2.5 Kg		337	335	388
C/S Conducted		627	570	771
C/S Rate		14.69	14.97	19.23 ↑
TBAs Delivery		480	379	267
TBAs Delivery Coverage		11.80	9.13	6.11 ↓

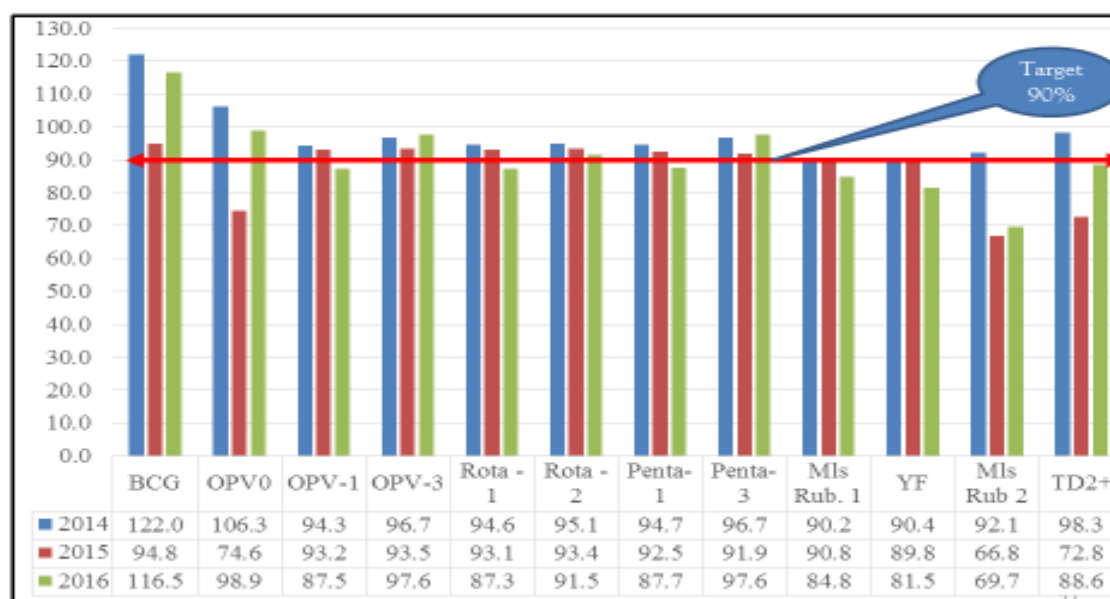
Abortion by Age Groups 2014-2016



Malnutrition Prevalence by Sub-municipals, 2014-2016



SO 6: Intensify prevention and control of non-communicable and other communicable diseases: EPI -I (2014-2016 Coverage)



TB/ HIV COLLABORATION (2014-2016)

INDICATOR	2014			2015			2016		
	MALE	FEMALE	TOTAL	MALE	FEMALE	TOTAL	MALE	FEMALE	TOTAL
NO. OF CASES	42	9	51	51	17	68	51	19	70
NO. COUNSELLED	13	3	16	29	12	41	49	15	64
NO. TESTED	13	3	16	29	12	41	49	15	64
NO. POSITIVE	2	1	3	8	1	9	14	13	27
NO. ON ART	2	1	3	8	1	9	8	8	16

PMTCT -Trend Analysis

Indicators	2014	2015	2016
# of ANC Registrants	5,349	4,416	4,677
# Counseled for HIV	4,787	4,531	4,463
# Tested for HIV	4,634	4,384	4,455
% Tested for HIV	86.63	99.28	95.25
# Positive for HIV	43	64	56
% Positive for HIV	0.93	1.46	1.26
# Given ARV	46	30	

Syphilis -Trend Analysis

Indicators	2014	2015	2016
# of ANC Registrants	5,349	4,416	4,677
# Tested for Syphilis	520	2,428	4,211
% Tested for Syphilis	9.72	54.98	90.04
# Positive for Syphilis	7	40	51
% Positive for Syphilis	1.35	1.65	1.21
# Treated for Syphilis	7	40	38
% Treated for Syphilis	100.00	100.00	74.51

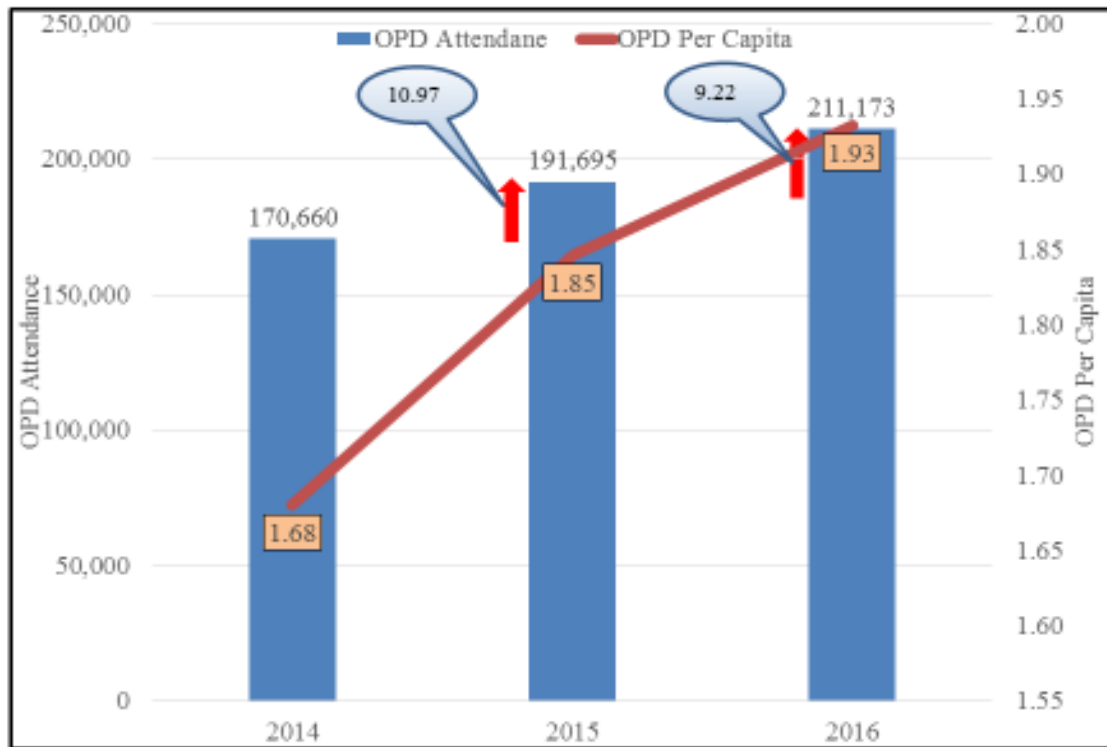
OPD MALARIA CASES

Indicators	2014	2015	2016
Total OPD Malaria Cases Suspected	44,653	55,924	48,432
OPD Malaria Cases Tested (Microscopy or RDT)	30,215	60,340	47,248
% Malaria Cases Tested	67.67	90.02	97.56
OPD Malaria Cases Tested Positive	16,876	24,471	21,270
OPD Malaria Cases Test Positivity Rate	55.85	48.61	45.02
OPD Malaria Cases Not Tested but Treated	7,418	7,291	1,797
% OPD Malaria Cases Not Tested	30.53	22.96	7.79
Total OPD Malaria Cases	24,298	31,762	23,067
% OPD Malaria Cases	20.87	21.54	17.22

UNDER 5 MALARIA BURDEN

Indicators	2014	2015	2016
Total U5 Malaria Cases (OPD)	8,063	10,750	7,547
% Total U5 Malaria Cases (OPD)	33.18	33.84	26.24
Total U5 Malaria Admissions	1,436	1,164	2,063
% Total U5 Malaria Admission	47.95	43.66	47.83
Total U5 Malaria Deaths	4	4	7
Total U5 Malaria Deaths (Cases Fatality)	4.08	5.94	9.59

Trend of OPD Attendance & OPD Per Capita (2014-2016)



Health Committee Members Orientation



4.6 WASTE MANAGEMENT DEPARTMENT:

The Waste Management Department is mandated to provide facilities, infrastructural services and programmes for effective and efficient waste management for the improvement in environmental sanitation, the protection of the environment and the promotion of public health.

(2) The Department is responsible among others is to,

- (a) service toilets and dispose of human waste collected from public and private sanitary facilities;
- (b) provide technical support to the District Assemblies on the operation and maintenance of public toilets under private management
- (c) supervise and control the operation of cesspool emptiers and allied equipment;
- (d) receive and provide adequate treatment and effective disposal of both solid and liquid waste;
- (e) treat and dispose of solid waste and provide compost manure;
- (f) supervise the cleansing of drains, streets, markets, car parks and weeding of road sides and open spaces;

Solid waste management

With rapid urbanization of the Municipality huge amounts of human and industrial wastes are generated at an alarming rates and calls for greater measure of waste management in the Municipality. It is estimated that about 950 tons of solid waste are generated monthly out of which 680 tons are collected which represents 72% of collection rate.

Final Disposal Site:

The final disposal site of the solid waste generated in in Kwahu West Municipality is located at Asona, a suburb of Nkawkaw. It shares boundary with Esaase and Saafi communities. The site is properly engineered quarterly by Landfill Company Limited; a subsidiary company of Zoomlion Company Limited to prevent leachate and offensive odours. The Assembly has acquired a liquid waste disposal site at Akuasi under Abirim District.

Market Management

There are 35 market enclaves in the Municipality of which Thursdays and Sundays are their respective market days. There are inadequate sanitation facilities such as urinals, toilets, pipe water ect.

Drainage management/Cleansing:

There are several drainage systems in the Municipality. Pedestrians and sellers along the streets dump refuse into the drains which prevent easy flow of waste and storm water.

The National Malaria and Control Programme Workers in collaboration with the Municipal Assembly organized monthly desilting of the drains for easy flow of waste water and waste bins are also placed at vantage points along the streets.

4.7 WASTE MANAGEMENT EQUIPMENT

a. SOLID WASTE

	NUMBER	GOOD STATE	BAD STATE	REMARKS
SKIP LOADER	2		2	Broken down trucks
ROLL-ON LOADER	2	2		One not working.
SKIP BINS	13	13	-	-
LITTER BINS	350	-	-	-
REFUSE DUMP (APPROVED)	35	24	11	Leveling and evacuation required
REFUSE DUMP (UNAPPROVED)	14	2	12	Dump site requires maintenance.
UNCINERATOR	2	2	0	Available at only health institutions, Holy Family Hospital and Kenop Hospital.

b. SANITATION / LIQUID WASTE

TOILET BY TYPE	NUMBER	NO. IN GOOD STATE	NO. IN BAD STATE
WATER CLOSETS (PB)	9	6	3
WATER CLOSETS (PV)	862	772	90
KVIP (PV)	122	98	34
KVIP (PB)	22	15	7
STL (PB)	24	10	14
ENVIRO LOO (PB)	15	7	8
PIT LATRINE (PV)	2	2	-

PIT LATRINE (PB)	2,243	1,985	258
VIP (PV)	2,428	2,045	373

c. WATER

TYPE OF WATER FACILITY	NUMBER	SAFE	UNSAFE
BORE HOLE	165	165	-
HAND DUG WELLS	91	91	-
RAIN HARVESTING	10	10	-
MERCHANISED	17	17	-
RIVER	7	5	2
SPRING	5	5	0
STREAM	20	12	-
PIPE BORNE STAND	143	113	30

MEAT INSPECTION AND MEAT HYGIENE

TYPE ANIMAL	OF NO SLAUGHTERED	PASSED FIT	PASSED UNFIT	TOTAL
GOAT	566	566	-	566
CATTLE	3,774	3,774	-	3,774
SHEEP	568	568	-	568
TOTAL				4,908

SCHOOLS HYGIENE AND SANITATION

PUBLIC SCHOOLS

Level	KVIP with Hand Washing	KVIP Without Hand Washing
Primary Schools	42	36
Junior High School	46	10

Senior High School	2	-
Kindergarten	50	25
Total	140	71

PRIVATE SCHOOLS

Level	KVIP with Hand Washing	KVIP Without Hand Washing
Primary Schools	25	10
Junior High School	8	4
Senior High School	5	-
Total	38	14

4.8 AGRICULTURE DEPARTMENT:

The Agriculture Department in the Municipality is responsible among other functions is to;

- (a) participate in provision of extension services in the areas of natural resources management, and rural infrastructural and small scale irrigation in the district;
- (b) assist in the formulation and implementation of agricultural policy for the District Assembly within the framework of national policies;
- (c) submit report on the implementation of policies and programmes to the District Assembly;

- (d)* advise the District Assembly on matters related to agricultural development in the district;
- (e)* promote extension services to farmers;
- (f)* assist and participate in on-farm adaptive research;
- (g)* lead the collection of data for analysis on cost effective farming enterprises;
- (h)* participate in the education and enforcement of legislation on fisheries;
- (i)* promote the formation of viable fishermen associations and assist in fish farming;
- (j)* promote soil and water conservation measures by the appropriate agricultural technology;
- (k)* disseminate and adopt improved soil and water conservation methods;
- (l)* promote agro-forestry development to reduce the incidence of bush fires;
- (m)* promote an effective and integrated water management;
- (n)* assist and facilitate sustained pasture and forage production and act as out grower to farmers;
- (o)* assist development of animal health services infrastructure;
- (p)* facilitate the development, operation and maintenance of livestock water supplies;
- (q)* assist in developing forage production, ranges and farmlands;
- (r)* encourage improvement in livestock breeds;
- (s)* assist in developing early warning systems on animals diseases;
- (t)* facilitate and encourage vaccination and immunization of livestock and control of animal diseases;
- (u)* advise and encourage crop development through nursery propagation;
- (v)* assist in the development, rehabilitation and maintenance of small scale irrigation schemes;

(w) facilitate the assessment of the economic, financial and environmental viability of providing canals;

The objectives of the Department of Food and Agriculture are to ensure food security and emergency preparedness, increase farmer incomes and reduce income variability, ensure sustainable management of land and environment through the application of science and technology in food and agricultural production.

This report captures the Agricultural sector's performance in the Kwahu West Municipal Assembly. These includes Crop sub sector, livestock sub sector, Veterinary and Agricultural Extension activities and Fisheries.

Contribution of Agriculture sector to MDG target. The Municipality was able to maintain a consistent trend in crop, vegetable and livestock production during the period, and this made food available and accessible during the reporting period.

TABLE 4.6 FOOD CROPS ANNUAL PRODUCTION LEVELS

YEAR CROP TYPE	2012		2013		2014		2015		2016	
	TOTAL AREA (HA)	TOTAL YIELD (MT/HA)	TOTAL AREA (HA)	TOTAL YIELD (MT/HA)	TOTAL AREA (HA)	TOTAL YIELD (MT/HA)	TOTAL AREA (HA)	TOTAL YIELD (MT/HA)	TOTAL AREA (HA)	TOTAL YIELD (MT/HA)
CASSAVA	8,845	1.8	9,288	1.8	8,802	2.2	9,100	1.4	5,700	1.2
YAM	1,218	1.4	1,222	1.4	1,313	1.5	1,100	1.0	4,000	1.0
PLANTAIN	2,238	1.3	2,349	1.3	2,756	1.4	2,800	1.5	2,100	1.5
MAIZE	1,385	1.8	1,445	1.9	2,200	2.6	2,600	2.2	2,330	2.2
OKRO	61	2.0	61	2.0	64	2.4	64	2.0	70	3.0
SWEET POTATO										

	1.6	5.5	1.6	6.6	2.4	11	2.4	12	3.2	17.5
GROUNDNUTS	-	-	-	-	-	-	-	-	-	-
COWPEA	-	-	-	-	-	-	-	-	-	-
PEPPER	62	2.1	64	2.3	67	2.5	67	2.1	72	3.4

TABLE 4.7 CASH CROPS ANNUAL PRODUCTION LEVELS

YEAR CROP TYPE	2012		2013		2014		2015		2016	
	TOTAL AREA	TOTAL YIELD	TOTAL AREA	TOTAL YIELD	TOTAL AREA	TOTAL YIELD	TOTAL AREA	TOTAL YIELD	TOTAL AREA	TOTAL YIELD

	(HA)	(MT/HA)	(HA)	(MT/HA)	(HA)	(MT/HA)	(HA)	(MT/HA)	(HA)	(MT/HA)
COCOA	-	-	-	-	-	-	-	-	-	-
COLA NUTS	-	-	-	-	-	-	-	-	-	-
ETC										

TABLE 4.8 FARMER/EXTNSION SERVICE RATION

YEAR	TOTAL NUMBER OF FARMERS	TOTAL NUMBER OF EXTENSION OFFICERS	RATIO
2012	20,488	13	1 : 1,576
2013	21,512	10	1 : 2,151
2014	22,587	10	1 : 2,258
2015	23,716	10	1 : 2,371
2016	24,901	10	1 : 2,490

TABLE 4.9 LIVESTOCK PRODUCTION

LIVESTOCK YEAR	CATTLE	SHEEP	GOATS	PIGS	POULTRY	TOTAL
2012	6,248	10,593	15,949	1,219	46,129	80,138
2013	5,894	13,216	21,173	1,423	44,312	86,018
2014	4,256	16,534	26,259	1,596	41,933	90,578

2015	1,342	19,758	29,145	1,611	40,613	92,469
2016	280	21,184	32,205	1,700	39,700	95,069
TOTAL						

TABLE 4.10 FISH PRODUCTION

FISH TYPE	TILAPIA (STOCK)	CATFISH (STOCK)	MUDDFISH (STOCK)	TOTAL
YEAR				

2012	-	-	-	-
2013	-	-	-	-
2014	-	-	-	-
2015	-	-	-	-
2016	30,800	5,400	-	36,200
TOTAL	30,800	5,400	-	36,200

4.9 DEPARTMENT OF PHYSICAL PLANNING

The Department of Physical Planning at the Municipal level shall manage the activities of the Department of Town and Country Planning and the Department of Parks and Gardens.

(2) The Department shall

(a) advise the District Assembly on national policies on physical planning, land use and development;

(b) co-ordinate activities and projects of departments and other agencies including Non-Governmental Organizations to ensure compliance with planning standards;

(c) assist in preparation of physical plans as a guide for the formulation of development policies and decisions and to design projects in the district;

(d) assist to identify problems concerning the development of land and its social, environmental and economic implications;

(e) advise on setting out approved plans for future development of land at the district level;

(g) advise on preparation of structures for towns and villages within the district;

4.9.1 Plan Layout Preparation

Table 4.11 shows the activities that were implemented by the Department for the period under review;

Table 4.11 Showing the Work Plan for Town and Country Planning for the year 2016

No.	Main activity	Time line	Funding source	Amount GH¢
------------	----------------------	------------------	-----------------------	-----------------------

1.	Preparation of base maps and planning scheme for Asona community	January – March 2016	GOG	10,800.00
2.	Preparation of base map and sector layouts for Kwaman, Oframanse, Abepotia Extension, Asuboni Rails, Atibie Amanfrom	March – December 2016	DACF	54,000.00
3.	Preparation of facility maps for Nkawkaw township	March – December 2016	DACF	60,000.00
4.	Technical and Statutory Planning Meeting	January – December 2016	IGF	14,000.00
5.	Public sensitization on Town and Country Planning activities (fm station and communities)	January – December 2016	IGF	4,000.00

4.10 SOCIAL WELFARE AND COMMUNITY DEVELOPMENT DEPARTMENT

The Social Welfare and Community Development Department shall assist the Assembly to formulate and implement social welfare and community development policies within the framework of national policy.

(2) The Department shall

(a) facilitate community-based rehabilitation of persons with disabilities;

(b) assist and facilitate provision of community care services including:

(i) registration of persons with disabilities;

(ii) assistance to the aged;

(iii) personal. social welfare services;

(iv) hospital welfare services;

(v) assistance to street children, child survival and development; and

(vi) socio-economic and emotional stability in families;

(c) assist to maintain specialized residential services in the districts;

(d) facilitate the registration and supervision of non-governmental organizations and their activities in the district;

(e) assist to organize community development programmes to improve and enrich rural life through:

(i) Literacy and adult education classes;

(ii) Voluntary contribution and communal labour for the provision of facilities and services such as water, schools,

library, community centres and public places of convenience
or;

(iii) teaching deprived or rural women in home management
and child care.

4.10.1 MAJOR PROGRAMMES OF THE YEAR:

1. Justice Administration. (J/A)
2. Child Rights Promotion and Protection. (CRP&P)
3. Community Care. (CC)

ACTIVITIES UNDER JUSTICE ADMINISTRATION:

1. Court work.
2. Writing of Social Enquiry Reports (SERs) to the courts.
3. Probation Service Delivery.

ACTIVITIES UNDER CHILD RIGHTS, PROMOTION & PROTECTION

1. Supervision of day care centers.
2. Inspection and supervision of children's homes/orphanages.
3. Family Reconciliation & Empowerment
4. Child Welfare service.

ACTIVITIES UNDER COMMUNITY CARE

1. Services for persons with Disabilities.
2. Work with Non-Governmental Organizations.
3. Work with the aged.
4. LEAP services to Orphaned, Vulnerable children, Aged 65+ without subsistence support and severely persons with severe disability without productive capacity.
5. Public Social Education campaigns.

JUSTICE ADMINISTRATION

Activities carried out during the period under review covered court work; Voluntary Supervision of children in need of supervision, no Social Enquiry Report.

Table 4.12.Cases handled/ disposed off

COURT	NATURE OF CASES	BROUGHT FORWARD	NEW CASES	TOTAL	DISPOSED OFF	PENDING
Family Tribunal	Maintenance	35	7	42	8	34
	Paternity	-	-	-	-	-
	Custody	5	-	5	1	4
	Family	-	-	-	-	-
	Other	-	-	-	-	-
TOTAL		40	7	47	9	38
Juvenile Court	Unlawful entry	-	-	-	-	-
	Stealing	-	-	-	-	-
	Assault	-	-	-	-	-
	Defilement	-	-	-	-	-
	Narcotics	-	-	-	-	-
	Murder	-	-	-	-	-
	Rape	-	-	-	-	-
	Others	-	-	-	-	-
TOTAL		-	-	-	-	-

Table:4.13 social enquiry reports

COURT	NATURE OF CASE	NO. OF SER	DISPOSAL
Family Tribunal	Custody	2	2
Juvenile Court	Juvenile delinquency	-	-
	Care Order	-	-

Table 4.14 CHILDREN RIGHTS PROMOTION AND PROTECTION

NO	Day Cares	Total	Gender	
			Male	Female
1	Registered Day Care Centers	23		
2	Unregistered Day Care Centers	42		
3	Train Attendants	4		
4	Untrained Attendants	33		
5	Children under care	4,706	2,436	2,270

TABLE 4.15 CENTERS SUPERVISED

No	Activity	Gender		
		Total	Male	Female
1	Number of centers Supervised	37		
2	Number of children at center		2,436	2,270
Total				4,706

4.10.2 CASE WORK WITH FAMILIES:

The table below shows the disposition of cases that were handled at the Department during the year under review.

TYPES OF CASES	B/F	NEW CASE	CLOSED SUCCESSFULLY	REFERED TO COURT	WITHDRAWN	REMAINING
Maintenance	16	71	57	2	10	16
Family Welfare	14	52	42	4	9	13
Custody	6	27	24	-	1	9
Paternity	1	3	1	-	-	4
Total	37	153	124	6	20	40

TABLE 4.16 FAMILY REUNIFICATION

NO.	NAME OF CHILD	PERSON RECEIVING THE CHILD	TOWN	MUNICIPALITY/DISTRICT	DATE OF REUNIFICATION
1	Ntiamoah Emmanuel	Auntie Tawiah	Nkwatia	Kwahu South	29/03/16
2	Prince Ansah	Janet Dansoa	Ansongkrom	Kwahu West	17/05/16
3	Clinton	Nyabaa Atinsango	Akontanim	Dormah East	28/04/16
4	Prince	Nyabaa Atinsango	Akontanim	Dormah East	28/04/16
5	Kwesi	Atio Felicia	Atibie	Kwahu South	13/04/16

4.11 DEPARTMENT OF URBAN ROADS

The following activities were implemented under the supervision of the department for the period under review;

4.11.1 Drain/Culvert Cleaning

The Department embarked on an intensive desilting exercise on most culverts in the Municipality. Drains along the arterial, distributor and some selected local roads were also cleaned. An amount Gh**₹13,200.00** used to desilt 6 culverts in various locations in the Municipality.



Grass Cutting

The Department did embark on grass cutting as part of its routine maintenance activities, some arterials and collectors in the municipality were selected as part of this program. An amount of Gh**6,600.00** was spent to carry out this activity.



Pothole Patching/Sectional Repairs

To ensure that investment made on the roads is preserved, pothole patching and sectional repairs were carried out on some roads in the Municipality. During the period under review roads within Nkawkaw Township were rehabilitated. About **690.0m²** with total cost of **Gh63,396.00** was used for potholes patching.



Traffic Lights Maintenance

The Department as part of its regular traffic maintenance activity maintained all the **3** signalized intersection in the Municipality through cleaning of traffic lights, replacement of defective signal bulbs and adjustment of the phase cycle lengths to suit current traffic demand in the Municipality during year under review.

4.11.2 PERIODIC MAINTENANCE

Gravelling

The Department embarked on graveling works during this period under review. A total of a **300m** length of road network was gravelled with a cost of **Gh¢38,500.00** for the year under review.

Resealing

Resealing works were contracted for the year under review. The Department had a budget **Gh¢77,000.00** to reseal **500m** length of road network within the Municipality.

4.11.3 Minor Rehabilitation of Bertrams Area Roads

The Department embarked on minor drainage construction works on the Bertrams Road at a cost of **Gh¢169,968.70**. The Department continued with the repairs of minor drains/replacement of broken slabs and metal gratings as part of its routine maintenance activities.

The Department through its program of action to minimize the effect of flooding in the municipality constructed two (2) pipe culverts comprising of two (2) 0.9m diameter at the Residency Road, Nsuta.

CHAPTER FIVE

5.0 SUMMARY OF GENERAL PERFORMANCE

1. All UDG sub-projects were completed, commissioned and in use.
2. The Eastern Regional Review Committee has granted concurrent approval for the award of the construction of 1 no. Community library with ancillary facilities at Nkawkaw.
3. All Procurement processes for UDG-5 were completed and 'no-objection' is sought from the MLG&D for awards
4. Capacity Support Fund application was completed and submitted LGSS through RTAT.
5. Assets management assignment phase I was completed
6. The 2017 Composite Annual Action (AAP) and Composite Budget were approved by the General Assembly.

5.1. KEY ISSUES/CHALLENGES

1. Inadequate and untimely release of DACF for timely projects and programmes implementation.
2. Inadequate vehicle/logistics for M&E activities
3. Untimely release of DDF and UDG funds for sub-projects implementation
4. Inadequate office accommodation for staff
5. Inadequate residential accommodation for staff
6. Poor nature of roads in the Municipality
7. Traffic congestion in the Nkawkaw Township.
8. Degradation of the environment; deforestation and illegal mining
9. Haphazard infrastructure development

5.2 Appendices

5.2.1 PICTORAL PROJECTS PROGRESS PRESENTATION



CONSTRUCTION OF FODUA COMMUNITY SHS



COMPLETED FODUA COMMUNITY SHS



DRILLING AND MECHANIZATION OF 2NO. BOREHOLES @ DUBAI AND ADOAGYIRE
UDG TYPE 4
CONSTRUCT SUM: GH¢117,937.00



CONSTRUCTION OF BIOGAS FOR NEW SLAUGHTER VHOUSE @ AMPESIKA-NKAWKAW
UDG TYPE1 CONTINGENCY.
COTRACT SUM GH¢93,575.04



CONSTRUCTION OF CONCRETE LINE "U" DRAIN 0.60M FROM TOTAL JN TO CHURCH OF CHRIST -NKAWKAW.
UDG TYPE 3.
CONTRACT SUM: 190,000.00
STATUS: 100% COMPLETE