

# KUMBUNGU DISTRICT ASSEMBLY



## DRAFT MEDIUM TERM DEVELOPMENT PLAN (2014-2017)

(BASED ON GHANA SHARED GROWTH AND DEVELOPMENT AGENDA-GSGDA II)

PREPARED BY:  
DISTRICT PLANNING COORDINATION UNIT  
KUMBUNGU-NOVEMBER 2013

## **ACRONYMS**

AC	AREA COUNCIL
AEA	AGRICULTURAL EXTENSION AGENT
AIDS	ACQUIRED IMMUNED DEFICIENCY SYNDROME
ART	ANTI RETROVIRAL THERAPY
CAPS	COMMUNITY ACTION PLANS
CBRDP	COMMUNITY BASED RURAL DEVELOPMENT PROJECT
CCBT	COMMUNITY CAPACITY BUILDING TEAM
CHPS	COMMUNITY HEALTH PLANNING SERVICES
CRS	CATHOLIC RELIEF SERVICES
CSIR	COUNCIL FOR SCIENTIFIC AND INDUSTRIAL RESEARCH
CWSA	COMMUNITY WATER AND SANITATION AGENCY
DA	DISTRICT ASSEMBLY
DADU	DISTRICT AGRICULTURAL DEVELOPMENT UNIT
DCE	DISTRICT CHIEF EXECUTIVE
DDF	DISTRICT DEVELOPMENT FACILITY
DFR	DEPARTMENT OF FEEDER ROADS
DHMT	DISTRICT HEALTH MANAGEMENT TEAM
DMTDP	DISTRICT MEDIUM TERM DEVELOPMENT PLAN
DPCU	DISTRICT PLANNING CO-ORDINATING UNIT
DWAP	DISTRICT WIDE ASSISTANCE PROJECT
EHU	ENVIRONMENTAL HEALTH UNIT
EU	EUROPEAN UNION
GDO	GENDER DESK OFFICER
GES	GHANA EDUCATION SERVICE

GSGDA	GHANA SHARED GROWTH AND DEVELOPMENT AGENDA
GOG	GOVERNMENT OF GHANA
GPRS II	GROWTH AND POVERTY REDUCTION STRATEGY
HIV	HUMAN IMMUNED VIRUS
JHS	JUNIOJR HIGH SCHOOL
KVIP	KUMASI VENTILATED IMPROVED PIT
LI	LEGISLATIVE INSTRUMENT
M&E	MONITORING AND EVALUATION
MOE	MINISTRY OF ENERGY
MOFA	MINISTRY OF FOOD AND AGRICULTURE
MTDP	MEDIUM TERM DEVELOPMENT PLAN
NDPC	NATIONAL DEVELOPMENT PLANNING COMMISSION
NFED	NON FORMAL EDUCATION DIVISION
NGOS	NON GOVERNMENTAL ORGANIZATION
NMCP	NATIONAL MALARIA CONTROL PROGRAMME
KDA	KUMBUNGU DISTRICT ASSEMBLY
PHC	POPULATION AND HOUSING CENSUS
PLWHA	PEOPLE LIVING WITH HIV/AIDS
POCC	POTENTIAL OPPORTUNITY CONSTRAINTS CHALLENGES
PTA	PARENT TEACHER ASSOCIATION
RING	RESILIENCY IN NORTHERN GHANA
RCC	REGIONAL CO-ORDINATING COUNCIL
SHEP	SCHOOL HEALTH EDUCATION PROGRAMME
SMC	SCHOOL MANAGEMENT COMMITTEE
SRI	SOIL RESEARCH INSTITUTE

SRWSP	SUSTENABLE RURAL WATER AND SANITATION PROJECT
TB	TUBERCULOSIS
TBA	TRADITIONAL BIRTH ATTENDANCE
UNICEF	UNITED NATIONS CHILDREN EMERGENCY FUND
VIP	VENTILATED IMPROVED PIT
WATSAN	WATER AND SANITATION
WFP	WORLD FOOD PROGRAMME

## **FOREWORD**

The Medium Term Development Plan (MTDP) 2014-2017 for the Kumbungu District Assembly was prepared in accordance with the Ghana Shared Growth and Development Agenda (GSDA II) policy framework 2014-2017. The plan seeks to support growth wealth creation and accelerate poverty reduction in a decentralized democratic environment.

The focus of this document over the four-year period taking into consideration the rural and agricultural nature of the district is to improve and sustain the micro-economy of the district, expanded development of production infrastructure, accelerate agricultural modernization and agro – based industrial development, sustain partnership between government and private sector, develop the human resource for local and national development, ensure transparent and accountable governance and reduce poverty and income inequality as envisioned by government as its priority areas.

The preparation of this plan has been possible through the collective efforts of the many individuals, organizations and institutions.

## EXECUTIVE SUMMARY

The Kumbungu district assembly in line with its statutory obligation as the planning authority of the district hereby present its Medium Term Development Plan MTDP for 2014-2017

This document seeks, among other things to address the key and relevant issues concerning to the general rural development in the Kumbungu District Assembly. The document begins with a brief profile of the District including information on its geographical location, climate and vegetation. It also provides information on population, ethnicity, religion, employment, economic activities, potentials, opportunities, constraints and challenges of the district.

This document also defines the infrastructural status of the district in the area of agriculture, education, health, roads, water and sanitation etc. which are in deplorable conditions. By way of addressing these shortfalls, this document has been prepared along the thematic and focus areas of the **Ghana Shared Growth and Development Agenda II 2014-2017** policy framework document.

The district foresees that achieving its goals, objectives and strategies through the transfer of technical and financial resources to improve and sustain community level infrastructural investments to enhance agricultural production, rural development and to reduce rural poverty and increase the quality of life of the rural poor in the district. These pragmatic solutions cannot be attained without strategy or plan in place.

After a sequence of participatory stakeholder meetings, and workshops at the community, district and the regional levels, this four-year development Draft District Medium Term Development Plan was developed for the successful implementation of the rural development agenda of the district for the next four (4) years, 2014-2017.

The priority areas of development for the district in the four years ahead, the Programmes of Action (POA) and Community Actions Plans (CAPs) have also been clearly outlined in the document.

The funds for financing this plan will come from the Government of Ghana, the Kumbungu District Assembly share of the District Assembly Common Fund, Internally Generated Funds (IGF) of the Assembly, District Development Facility (DDF), Donors or Development Partners, Non-Governmental Organizations (NGOs), beneficiary groups and communities.

Finally the document outlines the implementation of the plan by the Kumbungu District Assembly and other stakeholders.

# TABLE OF CONTENTS

List of Acronyms.....	II-IV
Foreword.....	V
Executive Summary.....	VI
Table of Contents.....	VII
<b>1.0 Chapter One : Performance Review/ Profile/Current Situation/Baseline.....</b>	
1.1 District Profile.....	
1.2 Performance Review.....	
1.3 Situation Analysis.....	
<b>Chapter Two: Prioritization of Development Issues.....</b>	
2.1 Key Development Issues.....	
2.2 POCC Analysis of Development Issues.....	
2.3 Development Priorities linked to the Thematic Areas.....	
<b>Chapter Three: Development Goals, Objectives and Strategies.....</b>	
<b>Chapter Four: Development Programmes.....</b>	
<b>Chapter Five: District Annual Action Plan.....</b>	
<b>Chapter Six: Monitoring and Evaluation Arrangements.....</b>	
<b>Chapter Seven: Communication Strategy.....</b>	
7.1 Communication Strategy/Plan	
7.2 Dissemination of the MTDP and Annual Progress Report of the implementation of the MTDP	

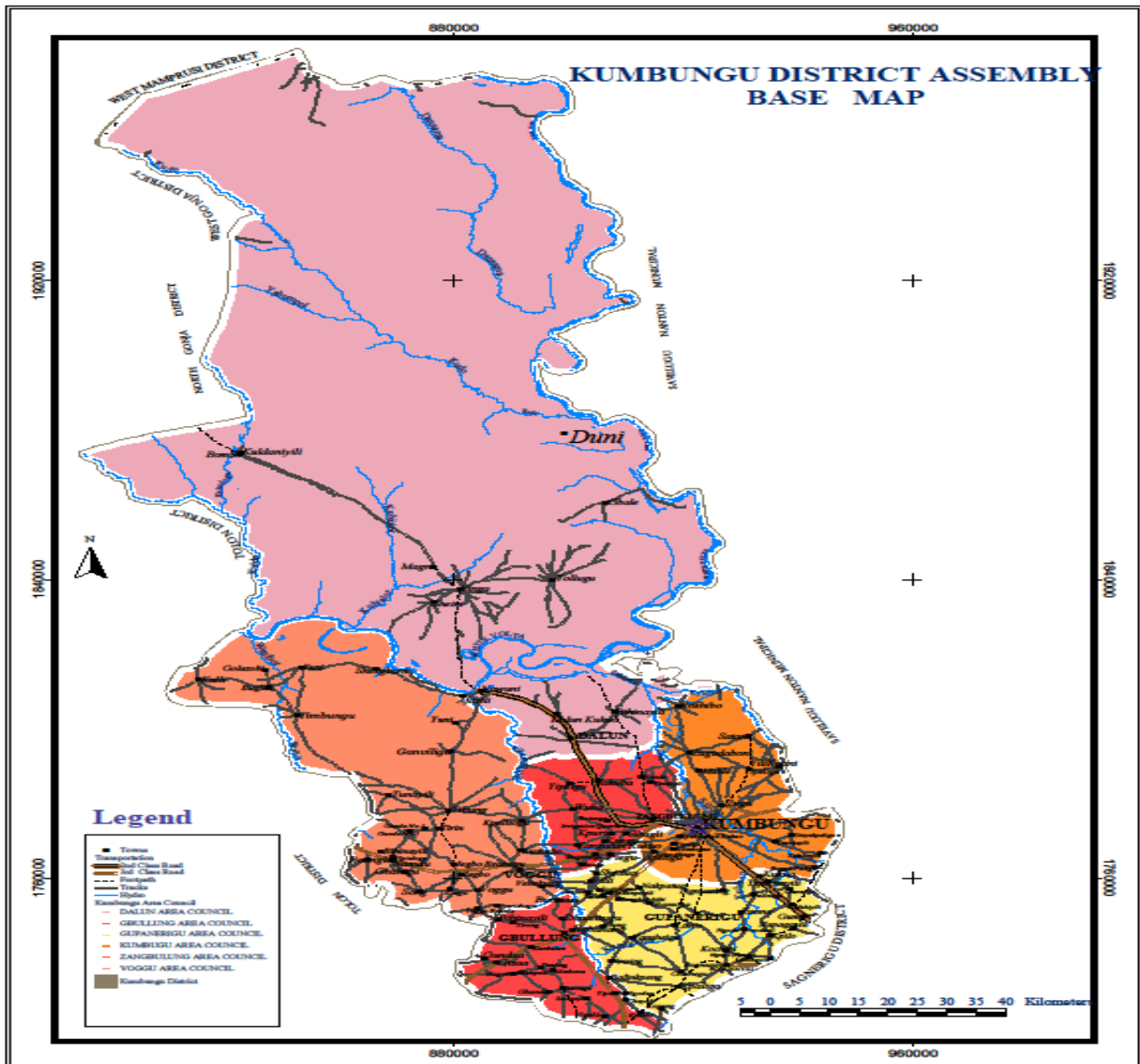
## APPENDIX

# CHAPTER ONE

## PERFORMANCE REVIEW/PROFILE/CURRENT SITUATION/BASELINE

### 1.0 DISTRICT PROFILE OF KUMBUNGU

Map of the district



## **BACKGROUND AND INTRODUCTION**

Kumbungu District is one of the newly created district that was carved out of the then Tolon/Kumbungu District with Legislative Instrument (L.I) 2062 of 2011. It was inaugurated on the 28th June, 2012 with Kumbungu as its district capital.

### **Location and size of the District**

The District is located in the northern flank of the Northern region and covers a land mass of approximately 1,599 km sq. The District shares boundaries to the North with Mamprugu/Moagduri district, Tolon and North Gonja districts to the West, Sagnerigu District to the South and Savelugu/Nanton Municipal to the East. The district is made up of 115 communities with 24 electoral areas (EAs), One (1) Town council (TC) and Five (5) Area councils (AC). They include; Gupanerigu, Gbullung, Zangbalung, Dalun and Voggu Area councils and the Kumbungu town council being the administrative capital.

## **PHYSICAL AND NATURAL ENVIRONMENTAL CHARACTERISTICS**

### **Topography and Drainage**

The land is generally undulating with a number of scattered depressions. There are no marked high elevations throughout the district.

The District is drained by a number of rivers and streams, most prominent being the White Volta. The major rivers and their tributaries exhibit dendrite drainage patterns. Most of these tributaries dry up during the dry season.

### **Climate**

In Kumbungu District, the Rains begin in May and end in the latter part of October. July to September is the peak period and the district experiences floods during the period. The rest of the year is dry. The average annual rainfall is 1000mm.

The temperature is warm, dry and hazy around February to April. It is cool, moist and rainy around May to September. Harmattan is experienced in the period from November to February. The district is generally warm.

## **Vegetation**

The vegetative cover is basically Guinea Savanna interspersed with short drought resistant trees and grassland. The land is generally undulating with a number of scattered depressions. The soil is generally of the sandy loam type except in the low lands where alluvial deposits are found. Major trees species include the sheanut, dawadawa, mango, which are economic trees and form an integral part of livelihood of the people.

## **Soil**

The soils are generally of the sandy loam type except in the low lands where alluvial deposits are found. Apart from the gentle slopes, the soils are highly vulnerable to sheet erosion and in some areas, gully erosion also occurs. This condition occurs primarily because of the perennial burning of the natural vegetation, leaving the soils exposed to the normally high intensity of the sun. The continuous erosion over many years has removed most of the top soils and depleted or destroyed its organic matter content. This situation does not allow the soil fauna to thrive and keep the top soil layers open and enable healthy plant roots to develop. It results in serious compaction, with considerable reduction in rainfall infiltration rate.

When the soil is affected by erosion and fertility reduced, it still has some potential for agriculture if their available nutrients are managed sensibly, including appropriate supplementation measures to restore a better soil water infiltration rate.

## **Land Tenure**

The Chiefs own lands in the district. Individuals or groups of people can acquire parcels of lands for construction or farming purposes. Land acquisition in the district is very easy and it is opened to everybody without discrimination.

## **Natural Environment**

The natural vegetation in most parts of the District especially around the local settlements have disappeared due to over cultivation, overgrazing by animals, over exploitation for fuel wood without replacement. Farming (crop and livestock production) is the major source of livelihood of the people. Crop production that comprises mainly off compound (bush) farms with an average of 0.5 hectares per farm holding. Extensive use of tractors in farming has led to deterioration of soils and hence loss of productivity. Over fishing, felling of trees and farming along banks of tributaries of the White river. Equally the applications of chemical fertilizers have led to depletion of fishes in the tributaries of the river. Bush burning

and hunting have led to partial extinction of some birds, reptiles and animal species that were common in the District. Cutting of shrubs for yam supports and construction of feeder roads also deplete the Natural environment.

### **Climate Change and Disaster Management**

The major land degradation issues are the cutting of trees for firewood, charcoal burning in some parts of the District. The Assembly in collaboration of the Ministry of Energy is introducing gas cookers and cylinders to the communities to help curb the use firewood as source of domestic energy.

The Assembly is in partnership with the Environmental Protection Authority (EPA) to embark on afforestation projects in selected communities under the GEMP programme.

The opening of the Bagre Dam in the Burkina Faso cause flooding in communities along the White Volta in the district during the peak of the raining season. The District NADMO in collaboration with other stakeholders educates communities along the White Volta to move to higher grounds during the peak of the raining season. In addition the District Disaster Management Committee (DDMC) chaired by the DCE works towards mitigating disasters in the districts as well as acting as a rapid response team to disasters.

The District liaises with the Ministry of Agriculture, Savannah Accelerated Development Authority (SADA) and other development partners to support farmers to cultivate assorted food crops at Botanga Irrigation Project so that they will not solely depend on rain fed agriculture. This is aimed at mitigating the effects of climate change on food production in the district.

### **DEMOGRAPHIC CHARACTERISTICS**

The total population, according to the 2010 Population and Housing Census, stands at 56,166 with a male population of 28,105 and a female population of 28,061. The district has an estimated the growth rate of about (3%). Population density is approximately 50 inhabitants per square Kilometer. Females constitute about (50%) of the population whilst that of males also stand at (50%).

About (54%) of the total population is under the ages of 20 years which indicate that the population is largely youthful. The proportion of children under 15 years is 45%. Dependency ratio is the ratio of non-productive persons (Age 0 to 15 and 65 years and above) to persons within the economically active age

group of 16 to 64 years is 1:1. This means that, in every household, each person within the economically active group has one dependent individual to take care of in addition to himself. The district is made up of 115 communities, most of which are farming communities with a population below 500. Using a population of 5000 as the threshold for Urban-Rural dichotomy, the district has about two (2) Urban centres. These are Kumbungu (District Capital) and Dalun. It therefore implies that a greater percentage of the population lives in the rural areas.

## **SOCIO-CULTURAL CHARACTERISTICS**

### **Ethnicity**

The indigenous people are Dagombas; however, one can find other tribes like Gonjas and Ewes who engage in fishing activities along the White Volta. Dagombas constitute about (95%) of the district population.

### **Religious Beliefs**

Islam and Traditional Religions are the predominant religions of the people. However it is worth mentioning that there are pockets of Christians across the broad spectrum of the population especially in the urban settlements.

### **Festivals**

There are a number of festivals in the area. The major ones are Bugum (fire) and Damba festivals which are celebrated annually.

### **Housing**

The housing pattern in the district is generally of mud structures with thatch roofs. A small proportion of the mud houses are plastered with cement. The kind of roofing's for these buildings are mostly vulnerable to rain storm, strong wind hazards and also insect attack. Due to the unavailability of the schemes/layouts for these communities, these settlements are unplanned

## **VULNERABILITY ANALYSIS**

The district have majority of its population within 0-19 constituting 54.4 percent. The least population can be found in the age 65+ representing 5.4 percent. It can be concluded that, the district is made up of a very youthful population. This kind of population structure forms a pyramid with a broader base and a narrow apex. The large adolescent and young adult population would mean increased pressure on educational and

health facilities, and employment opportunities in the district.

Dependency ratio of the district is 101.1 which is however far above the regional average of 96.8. This high dependency ratio means that there is a high burden on the economically active group. The district's total fertility rate is 3.6, general fertility rate is 103.9 and a crude birth rate of 23.4. The district's total fertility and general fertility are slightly above the regional average of 3.54 and 101.9 respectively. However, the crude birth rate of the district is lower than the regional average of 24.0. About 81.3 percent of children ever born by women 12 years and older are surviving which is also below the regional rate of 83.7 percent.

The location of the district makes the people naturally vulnerable to rain storms. The cases of Kayaye which is at an alarming rate has put the district in a risk zone since some of these people come back with strange diseases, putting the lives of their families at risk. Also, most children of school going age go down south for menial jobs due to poverty and hunger and so are not in school. Below is a representation of major vulnerabilities the people are exposed to in the district:

- ◆ High dropout rates in schools due to hunger and poverty
- ◆ High risk of being affected by rainstorm
- ◆ High risk of disease infections
- ◆ High risk of maternal deaths due to early marriages
- ◆ High unemployment rate

There is also inadequate alternative social insurance and safety nets for the very vulnerable. NADMO is currently present in the district but is faced with a lot of challenges including office accommodation, resources and equipment.

## **Disability**

There are 600 persons with various forms of disabilities in Kumbungu district. This constitutes 1.5 percent of the district's population. Out of the 600 persons with various forms of disabilities, females reported the highest number of persons in sight (112). Generally, people with sight and physical disabilities are in the majority in the district.

There are 448 people out of the total population 600 have various forms of disabilities and are 15 years and older, with 61.8 percent of them employed, 0.7 percent unemployed and 37.8 percent are economically not active. Among the various forms of disabilities, persons with sight disability reported to be more employed

(50.9 percent), with females and males constituting 30.8 percent and 29.2 percent respectively. Following this are people who reported to be physically disabled and employed (61.0%). One out of every four males are physically disabled (29.3%) while 23.5 percent of females are physically disabled.

## **Gender**

The population of the district is basically made up of men, women, boys and girls who are identified by their roles and responsibilities that are attached to them by the society. Like many societies across the country, the roles and responsibilities of the people in the Kumbungu district are not different. Males are regarded as the bread winners of the families and women as dependants.

The District is patriarchal when it comes to power relations and therefore making men and boys more powerful. This means that men take decisions in the district. This does not mean that women are absolutely left out of decision making; men sometimes consult the women before main decisions are taken.

Men are purely entitled to land, information and many other resources while women are supposed to be taken care of by men and therefore should be subservient.

A clear example of gender stereotype is often choosing the male child over the girl child to attend school when resources are scarce to take them both. This makes the girl child less educated and uninformed. The girl child is marginalized and confined to the kitchen; this affects the standard of education of the girl child as the society does not put any importance in girl child education. The Ghana School feeding programme and the help from CAMFED may reshape and bring more of the girl child to school.

Women constitute about 50% of the population of the District. They form a bulk of farm labour. They also engage in marketing and processing of agricultural produce. However, women access to agricultural lands and credit is very limited. Only 0.75% of women farmers had access to credit in 2013 (source: DADU report) which is marginal improved over 2012 of 0.5%. This is due to inadequate education and information, inadequate credit facilities, lack of collateral, low capacities of women in business, certain cultural and traditional practices. Consequently, women are incapacitated to generate enough income to emancipate them economically, particularly, women headed households.

Moreover, women are not fairly represented in the District Assembly and the Area Councils. This limits their participation in local governance, hence, limits their participation in decision-making that affect their lives.

As a result of these, women continue to play subservient role in the household and in the larger society with its attendant abuses such as wife beaten, rape, low enrolment and performance of school pupils and broken homes. These affect general development of the District and the total well- being of the people.

To address the gender disparity in the district, the district has a gender desk officer charged with the responsibility of collaborating with development partners to work towards bridging the gap. In addition the assembly has instituted a scholarship scheme to assist needy girls to further their education.

The assembly is also running two vocational schools in the district for girls aimed at encouraging the girls to engage in income generating activities. This has help reduce the incident of girls from the district migrating to the bigger cities to erg a living from menial jobs.

## Age and sex structure of the district

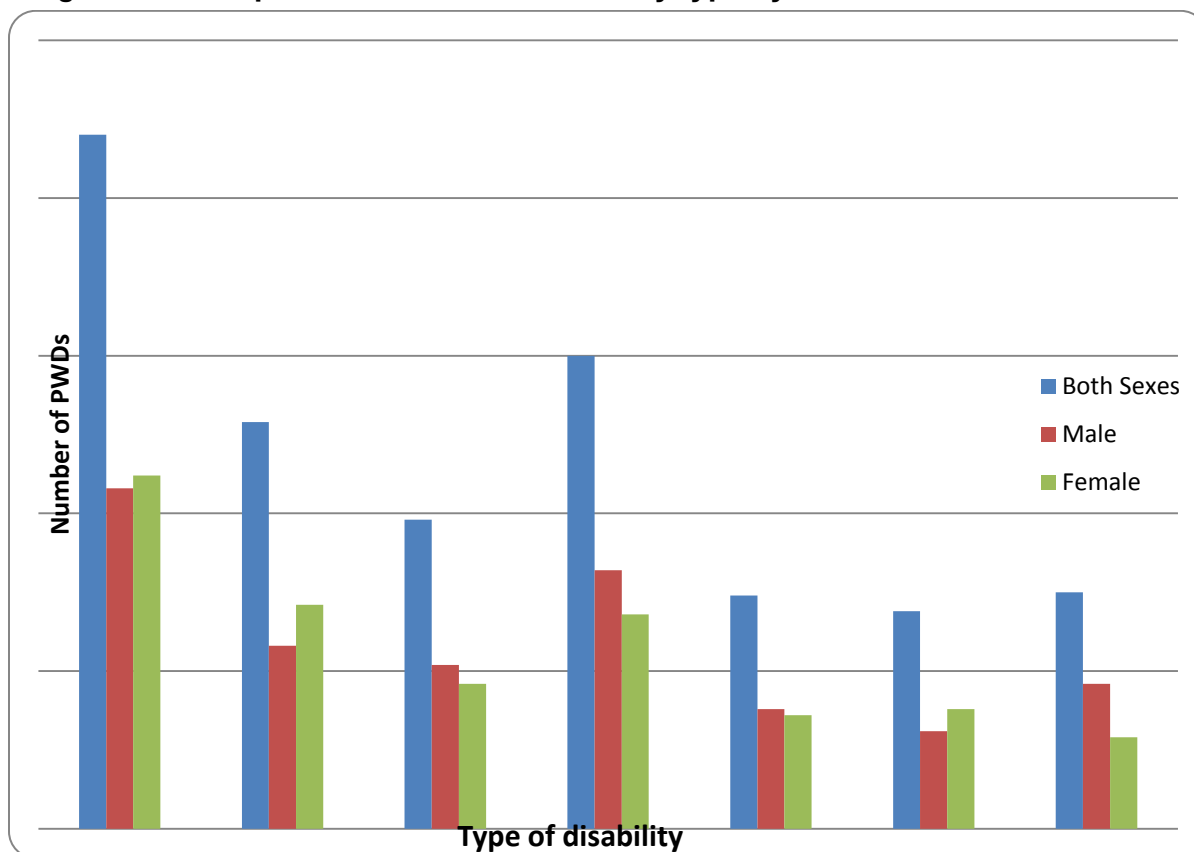
The above table shows the population of the district by age, sex and type of locality. The highest proportion of its population is in the age group 0 to 4 with a total population of 7,101. The total males in this age group are 3,500 and the females are 3,601 giving it a sex ratio of 97.2. The lowest proportion of the district's population is in the age group of 95 to 99 which has a total population of 49 out of which 23 are males and 26 are females. This also presents a sex ratio of 88.5.

**Table: 1.1 Population by age, sex and type of locality**

Age Group	Sex						Sex ratio	Type of locality	
	Both Sexes	%	Male	%	Female	%		Urban	Rural
All Ages	39,341	100.0	19,686	100.0	19,655	100.0	100.2	-	39,341
0 - 4	7,101	18.0	3,500	17.8	3,601	18.3	97.2	-	7,101
5-9	6,368	16.2	3,301	16.8	3,067	15.6	107.6	-	6,368
10-14	4,166	10.6	2,372	12.0	1,794	9.1	132.2	-	4,166
15 - 19	3,795	9.6	2,122	10.8	1,673	8.5	126.8	-	3,795
20 - 24	3,328	8.5	1,552	7.9	1,776	9.0	87.4	-	3,328
25 - 29	2,958	7.5	1,283	6.5	1,675	8.5	76.6	-	2,958
30 - 34	2,398	6.1	1,078	5.5	1,320	6.7	81.7	-	2,398
35 - 39	1,846	4.7	862	4.4	984	5.0	87.6	-	1,846
40 - 44	1,658	4.2	763	3.9	895	4.6	85.3	-	1,658
45 - 49	1,129	2.9	601	3.1	528	2.7	113.8	-	1,129
50 - 54	1,090	2.8	510	2.6	580	3.0	87.9	-	1,090
55 - 59	455	1.2	222	1.1	233	1.2	95.3	-	455
60 - 64	906	2.3	442	2.2	464	2.4	95.3	-	906
65 - 69	402	1.0	185	0.9	217	1.1	85.3	-	402
70 - 74	683	1.7	343	1.7	340	1.7	100.9	-	683
75 - 79	338	0.9	182	0.9	156	0.8	116.7	-	338
80 - 84	393	1.0	203	1.0	190	1.0	106.8	-	393
85 - 89	158	0.4	84	0.4	74	0.4	113.5	-	158
90 - 94	120	0.3	58	0.3	62	0.3	93.5	-	120
95 +	49	0.1	23	0.1	26	0.1	88.5	-	49

Source: Ghana Statistical Service, 2010 Population and Housing Census

**Diagram: 1.1 Graphic distribution of disability type by sex**



## SOCIAL SERVICES

### HEALTH

<i>Health care facilities</i>	No.
No of hospitals	1
No of CHPS Compounds	4
No of clinics	1
No of health centre/zone	2
Others	0
OPD Attendance per capita	0.26

## STAFF STRENGTH

CATEGORY	NO.
DDHS	1
DPHN	1
DCOs (Technical Officer)	2
DCOs (Field Technician)	2
Nutrition Officers	3
Health Information	1
Administrative staff	1
Accounts staff	3
Physician Assistants (MAs)	1
Midwives	3
Staff Nurses	4
Community Health Nurses	25
Enrolled Nurses	52
Mental Nurses	2
TOTAL	101

## EDUCATION

SCHOOLS BY CATEGORY			
	PRIVATE	PUBLIC	TOTAL
KG	6	72	78
PRIMARY	2	72	74
JHS	0	18	18
SHS	0	1	1
TECHNICAL & VOC. INST.	1	1	2
# OF SCHOOLS WITH PERMANENT STRUCTURE	PRIVATE	PUBLIC	TOTAL
KG	0	0	0
PRIMARY	2	72	74
JHS	0	17	17
SHS	0	1	1
TECHNICAL & VOC. INST.	1	1	2

## GROSS ENROLMENT RATE

	MALE	FEMALE	AV. TOTAL
KG	148	126	<b>137.2</b>
PRIMARY	140	118	<b>129</b>
JHS	118	79.1	<b>101</b>
SHS	51.7	33.9	<b>44.6</b>

## GENDER PARITY INDEX

	MALE	FEMALE	AV. TOTAL
KG	3,390	2,877	<b>0.85</b>
PRIMARY	7,301	5,594	<b>0.77</b>
JHS	2,115	1,157	<b>0.55</b>
SHS	881	475	<b>0.54</b>

## TEACHER – PUPIL RATIO

	TOTAL ENROLMENT	No. OF TEACHERS	Teacher: Pupil ratio	Trained teacher ratio
KG	6,267	127	<b>49</b>	<b>96</b>
PRIMARY	12,895	398	<b>32</b>	<b>51</b>
JHS	3,272	186	<b>18</b>	<b>19</b>
SHS	1,386	49	<b>28</b>	<b>35</b>

## **SECURITY**

The main security agencies and structures in the District are the Police Service, the Ghana Immigration Service, NADMO and the District Security Committee (DISEC). The Police and immigration personnel in the region supersede the district and therefore do not have permanent staff resident in the district. As a multi-ethnic district, the district is not without security problems. Some of the reported security and criminal cases are chieftaincy and ethnic conflict. Others are rape, defilement, life threats, theft and wife snatching (District Police report, 2013). The security agencies have crumpled down crime and managed the various security problems to the barest minimum.

In the face of all these, the security agencies are besieged with some constraints. Among others are inadequate personnel, lack of office space and communication facilities and means of transport for patrols. Others are non-existence of some security structures such as the fire service and District Magistrate and court. These hamper effective and efficient provision of security, law enforcement and order and dispensing justice.

## **ECONOMIC ACTIVITIES**

Agricultural production is the main activity in the District and is practiced mainly on seasonal and subsistence level with a few engaged in irrigation farming around the Bontanga Dam. It accounts for about (60%) of the district's labour force. This reflects the agrarian nature of the economy. In both rural and urban areas of the district, most people cultivate food crops like maize, rice, groundnuts, yam amongst others.

Generally the standard of living is very low as compared to the National average as indicated in the District poverty mapping. The people earn very little and cannot save to build up capital for development. The average income per month for a household is about GH¢20.20. Nationally, the Northern regions are classified as the poorest regions in Ghana. In the northern region, among the numerous poor districts, Kumbungu is not an exception as majority of its inhabitants are peasant and subsistent farmers.

## **Economic Potentials**

The Kumbungu District has a lot of opportunities awaiting private investment; joint venture partnership between the private and the public sector. In the Agricultural sector, studies have indicated that along the banks of the White Volta, irrigation farming is feasible and can take place throughout the year. The big dam

at Bontanga has a sizeable number of the population engaged in the cultivation of different crops ranging from Vegetables to cereals. Available records show that the Kumbungu District has a comparative advantage over the other districts in the northern region due to its numerous potential. It is worth noting that vegetables produced from these two (2) dams keep Tamale flooded with vegetables throughout the year, the district is also noted for the production of industrial crops like cotton. The District is endowed with vast truck of pasture suitable for livestock production. The District is blessed with a good breed of cows, sheep and goats. Another area of investment yet undeveloped is the poultry industry.

The District has Shea nut trees and other economic trees like mangos, Dawadawa trees. Other economic activities undertaken include inland fishing and rice and vegetable cultivations in large areas.

Given the unpredictable nature of the weather and unpredictable incomes from farming, many young people migrates to down south known as (Kayaayo) for economic reasons. The female especially migrate to Accra and Kumasi but are unable to get employment due to lack of appropriate employment skills.

### **Tourism Potentials**

A number of tourist attractions abound in the District which are largely untapped. These include:

1. The Dalun Water Treatment Centre
3. Traditional Artifacts at Logshegu
4. The Night Market at Gbullung
5. Bontaga Irrigation Dam

## **GOVERNANCE STRUCTURES AND SYSTEMS**

### **Administrative and Political Structure**

The Kumbungu District Assembly comprises 24 elected members and 11 appointed; totaling 35 members, plus the District Chief Executive and one Member of Parliament.

The district is sub-divided into six (6) Sub-district structures – One town and five Area councils. These are Kumbungu Town Council, Dalun Area council, Gbullung Area Council, Gupanerigu Area Council, Voggu Area Council and Zangbalung Area Council.

## No of Electoral Areas, Unit committees and communities per Area council

Area Council	Electoral Area	No. of Unit Committees	No. of communities
Kumbungu	8	5	16
Dalun	3	5	11
Gbullung	4	5	25
Gupanerigu	3	5	16
Voggu	3	5	27
Zangballung	3	5	11

The District Chief Executive is the political and Administrative head of the Assembly and chairs a Twelve (12) member Executive Committee of the Assembly. Directly below him is the District Coordinating Director who heads the bureaucracy. The District Coordinating Director also serves as the secretary to the General Assembly and Executive Committee.

## AREA COUNCILS AND THEIR RESPECTIVE COMMUNITIES

TOWN COUNCIL: KUMBUNGU		AREA COUNCIL:GUPANERIGU		AREA COUNCIL:GBULLUNG		AREA COUNCIL:VOGGU	
1	Bogu-Paligu	1	Bognaayili	1	Bagon	1	Adamasheiyili
2	Dinyo-Kpaligu	2	Cheshegu	2	Balinkpeng	2	Bihinayali
3	Dulzugu	3	Gbanzogu	3	Bihinayili	3	Bongnaayili
4	Kpukpaligu-Kukuo	4	Gingaani	4	Bimbegbiyili	4	Botingli
5	Kpulinyin	5	Gumo	5	Buntansi	5	Buglang
6	Kumbungu Town	6	Kochim	6	DimanZugu	6	Digu
7	Logshegu	7	Mbanayili	7	Gbullung	7	Gagbiya
8	Mablo	8	Nakpatua	8	Gizaa	8	Gamvulga
9	Satani	9	Napagyili	9	Gundaa	9	Gbulahigu
10	Tignaayili	10	Nwodua	10	Jekpahi	10	Golazoli
11	Timonayili	11	Nwogu	11	Kpaliga-Nyoring	11	Gundaa
12	Zamigu	12	Tasnshegu	12	Kukuo	12	Jegbo
13	Zugu	13	Tindanpagyili	13	Kunkulung	13	Kpalsogu
14	ZuguYipeligu	14	Villi	14	Ngbanan	14	Kuli
15	Zugu-Daboguni	15	Zangbalinbihi	15	Nyoring	15	Voggu Kushebo
16	Zugu-kushibo	16	Zoonaayili	16	Silimboma	16	NanduGbulahigu
				17	Tonjing	17	Namdu No. 1
<b>AREA COUNCIL: DALUN</b>		<b>AREA COUNCIL:ZANGBANLUNG</b>		18	Vehekuga	18	Namdu No. 2
1	Afayili	1	Bagurigu	19	cheyohiNo1	19	Pohimkura
2	Bihinaayili	2	Beggu	20	cheyohiNo.2	20	Nyerizegu
3	Dalun	3	Botanga	21	cheyohi No. 3	21	Sheegbuni
4	DalunKukuo	4	Gbugli	22	Kpachi	22	Song
5	Gbali	5	Kpegu	23	Garizegu	23	Tibung
6	Kuldani	6	Kpuring	24	Gbandu	24	Tiring
7	Magni	7	Kukuo	25	Zoolanyili	25	Voggu
8	Nawuni	8	Saakuba			26	Yuni
9	Sheeni	9	Wuba			27	Yugyili
10	Singa	10	Yipelgu				
11	Tolgu	11	Zangballung				

## **Administrative structure**

Administratively, the Assembly comprise of eight decentralized departments headed by the District Coordinating Director. The central administration which is the nucleus of the assembly is made up of Planning, Budget, National Disaster Management Organization, Environmental Health, Audit, Human Resource, Procurement units is being coordinate by the District Coordinating Director. The decentralized departments that have their presence in the district include Education, Health, Finance, Works, Community Development, Town and Country Planning and Agriculture.

## **MAJOR DEVELOPMENT ISSUE/CHALLENGES**

- Deforestation
- Conflict
- Land degradation
- Bush fires
- Inadequate portable water supply
- Improper disposal of solid waste
- Inadequate household latrines
- Food insecurity
- Underutilization of agricultural lands.
- Lack of irrigation facilities.
- Over reliance on rain fed agriculture.
- Low income of farmers.
- Low representation of women in decision making
- Poor performance of girls in schools
- Low enrolment of girl from upper primary to JHS
- Inadequate school infrastructure and furniture at all levels
- Inadequate number of Junior High Schools in
- Inadequate trained teachers in basic schools
- Low female enrolment (Junior High Schools / Senior High Schools)
- Inadequate infrastructures (Senior High Schools)
- Inadequate health personnel
- High rate of malnourished children
- Low consumption rate iodate salt
- Inadequate Voluntary Counseling and Testing centres
- Difficulty in dissemination of information
- Haphazard settlement development
- Inadequate accommodation for security personnel
- Inaccessibility of public building to PWDs

## 1.2 PERFORMANCE REVIEW

### 1.2.1 Sources of development funds to the district.

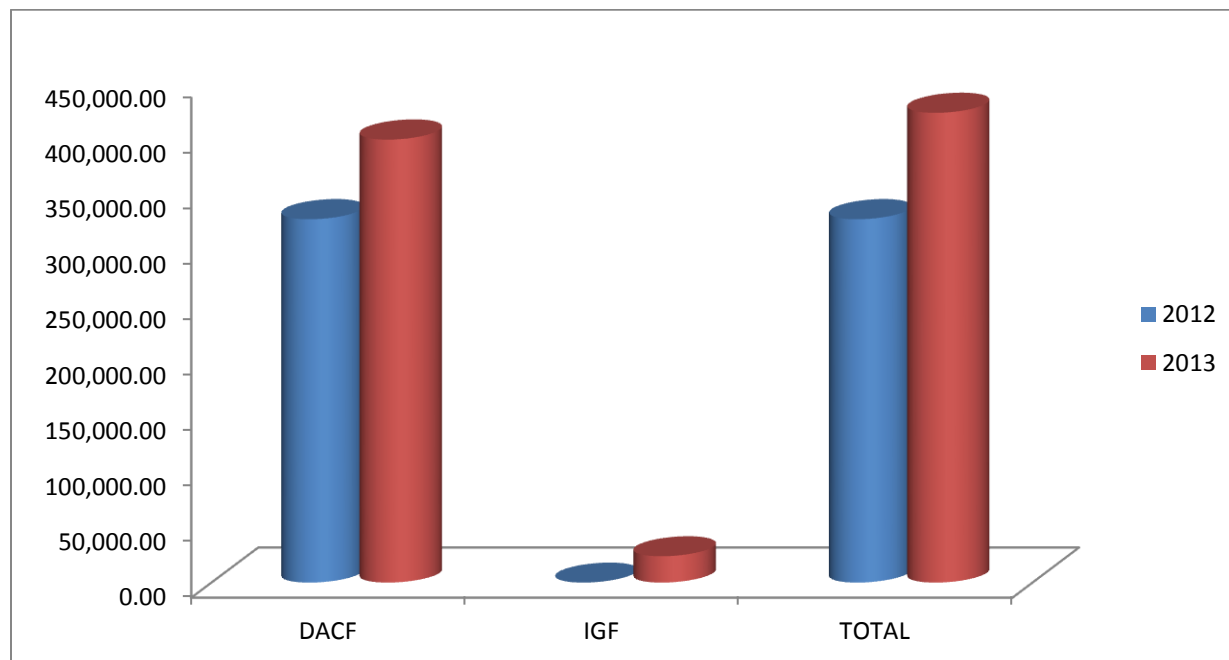
The main sources of development funds in the district during the 2010-2013 medium term included the following programme/project:

- District Assembly Common Funds (DACF) - Government of Ghana (GoG)
- Internally Generated Funds (IGF) – District and Sub-district Structures
- District Development Facility (DDF) – Multi donor fund
- Member of Parliament Development Fund. - Government of Ghana (GoG)
- MSHAP-mainly for HIV/AIDS activities. –Multi donor / Government of Ghana (GoG)
- School Feeding Programme - Multi donor / Government of Ghana (GoG)
- Ghana Education Trust Fund (GetFund) - Government of Ghana (GoG)

### 1.2.2 INFLOW OF FUNDS

FUND SOURCE	2012	2013
DACF	327,457.60	398,936.78
IGF	0.00	23,980.55
<b>TOTAL</b>	<b>327,457.60</b>	<b>422,917.33</b>

Source: District Finance Unit (2013)



## **1.2.3 FINANCIAL ANALYSIS**

### **1.2.3.1 INFLOW OF FUNDS ANALYSIS**

- The district still relies largely on external funding to implement its development programmes.
- DACF and DDF continue to be the major source of development fund for the district; DACF accounts for about 30.56% of the total development fund over the period.
- Funds from Donor sources constituted about 25% of the total inflows

### **1.2.3.2 IGF BEST PRACTICES**

- Intensification of monitoring and supervision of revenue collection
- Investment in income generation ventures (eg. Market stores etc)
- Fencing of the district market centre
- Provision of identification cards to revenue collectors

### **1.2.3.3 SOME CHALLENGES TO THE INTERNAL REVENUE GENERATION**

- Negligence of the people towards the payment of tolls, levies and taxes
- Seasonal nature of food stuffs which constitute a major portion revenue items.
- Remoteness of some communities in the district.

## **1.2 DEVELOPMENT PROGRAMMES AND PROJECTS IMPLEMENTED (2010-2013)**

### **2.0 DEVELOPMENT PROGRAMMES AND SUB- PROJECT IMPLEMENTATION STATUS**

#### ***2.1 Summary (Sub-Projects implemented during the 2013 fiscal year)***

Programmes and projects implemented during the medium term included;

- District Development Facility (DDF) –
- School Feeding Programme
- Ghana Education Trust Fund (GetFund)
- District Assembly Common Funds (DACF) projects

The type of projects implemented within the period included among others the construction of school infrastructure including classroom blocks, ancillary and classroom furniture, the construction of KVIPs located district wide, Construction of Small Town Water Systems located in Singa community, Drilling and

mechanization of boreholes (district wide), Spot Improvement of Feeder roads, Electrification projects, Rehabilitation of Abattoir, Construction of Business Advisory Centre among others.

## **BEST PRACTICES AND LESSONS LEARNT**

Numerous factors contributed to the successful achievement of the project implementation through the day-to-day administrative of the assembly, among which include; Team work, involvement of stakeholders in project initiation, planning, implementation, monitoring and evaluation, regular monitoring of programmes, dedicated work of duty bearers, regular flow of funds from donor partners, improved collaboration with decentralized departments, constant monitoring and constructive inputs from the Northern Regional Coordinating Council and other Government Ministries, Department and Agencies.

### **Lessons Learnt**

- Proficient stakeholder management is key to project success
- The implementation of other projects should be well planned to avoid challenges associated with travels to overseas communities especially in the rainy season.
- Participatory monitoring of projects and regular reporting brings all project actors to terms with the project status, successes, challenges and a cause to find sustainable strategies to address those challenges.
- Strictly compliance with the details of the Medium Term Development Plan reduces challenges associated with unplanned expenses, implementation of unplanned project and activities and poor accountability
- The art of planning, coordination and project management is a learning process.

## **SUB-PROJECT IMPLEMENTATION CHALLENGES**

- Unbalanced inflow or delay in the release of the District Assembly's Common Fund (DACF) delayed the implementation of some subprojects.
- Poor nature of roads in the District hindered effective monitoring and evaluation of sub-projects
- Late completion of sub-projects, particularly due to the effects of poor weather conditions, price variations, non-cooperating contractors.
- Inadequate Internally Generated Funds
- Erratic nature and timing of activities and events organized at the regional and national levels.
- Lack of accommodation for both old and newly posted staff
- Land disputes

- Transfers of staff

## WAY FORWARD

- Sustainable Peace and Security
- Regular inflow of Financial Resource and improved management
- Improved Collaboration among development Stakeholders
- Staff commitment to work
- Good road network
- Capacity building for staff

### 1.3.0 SITUATIONAL ANALYSIS

#### 1.3.1 EDUCATION

Brief summary

The District has a total of 309 educational institutions at the pre-tertiary level made of pre-schools (138 public/private). 133 Primary Schools, 33 JHS, 1 SHS and 2 Vocational training Schools.

According to the fourth quarter 2013 report of the Kumbungu Directorate, the Pupil : Teacher Ratio is categorised under the various levels of education as follows: K.G 49:1, Primary 32:1, J.H.S 18:1 and S.H.S as 28:1. The breakdown of the pupil/trained teacher ratio is as follows 201 trained teachers and 551 untrained. The average gross enrollment rate for K.G is 137, Primary school is 129, J.H.S is 101 and S.H.S is 44. The percentage of J.H.S students qualifying for S.H.S (aggregate 30 and below) for 2013 is 24.1. Out of this, the percentage of boys is 27.9 and that of girls is 15.9

**Table : Enrolment and Teacher Capacity Indicators (2010-2013)**

	2013		
SCHOOLS BY CATEGORY	PRIVATE	PUBLIC	TOTAL
KG	6	72	78
PRIMARY	2	72	74
JHS	0	18	18
SHS	0	1	1
TECHNICAL & VOC. INST.	1	1	2
# OF SCHOOLS WITH PERMANENT STRUCTURE	PRIVATE	PUBLIC	TOTAL
KG	0	0	0
PRIMARY	2	72	74
JHS	0	17	17

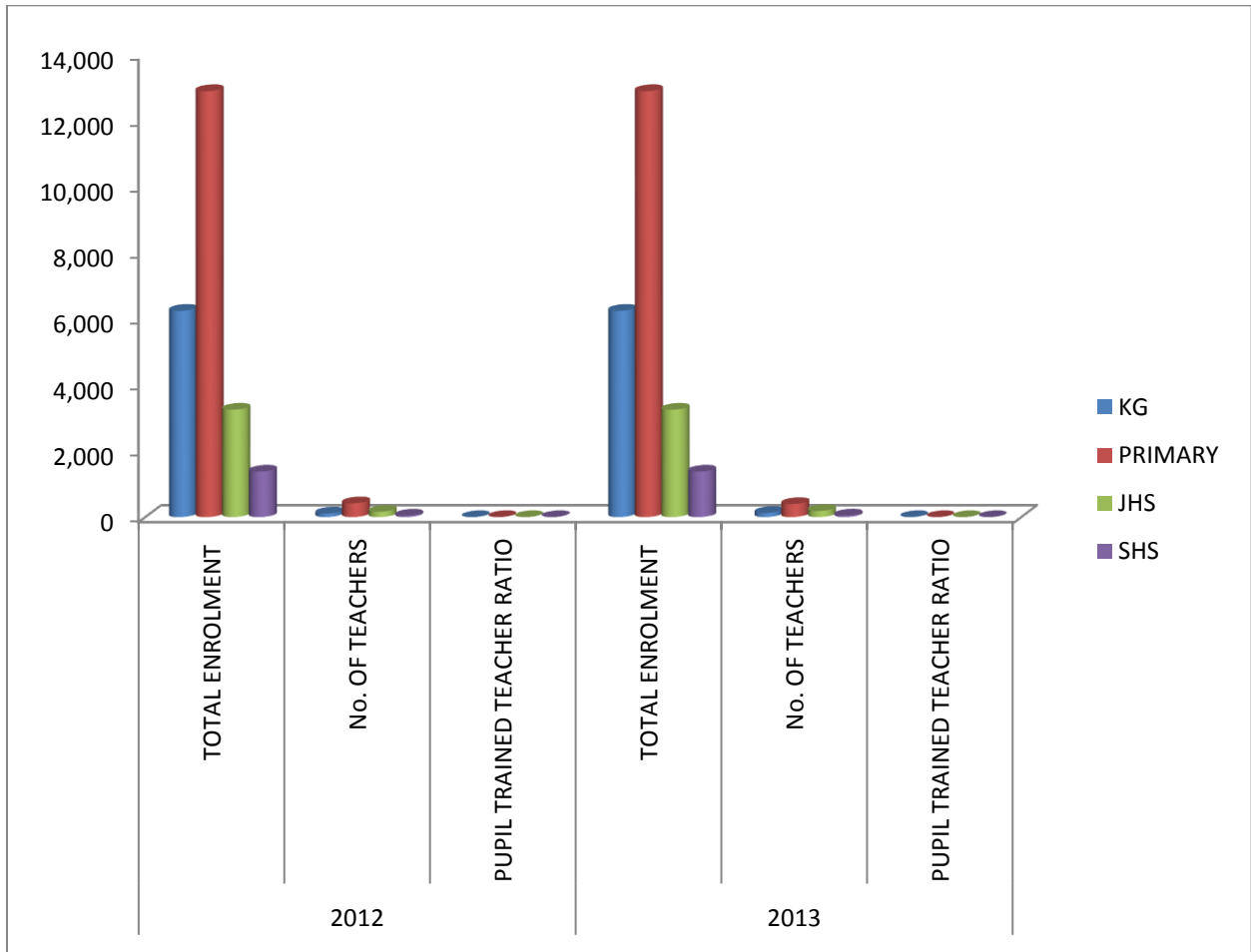
SHS	0	1	1
TECHNICAL & VOC. INST.	1	1	2
<b>GROSS ENROLMENT RATE</b>			
	<b>MALE</b>	<b>FEMALE</b>	<b>AV. TOTAL</b>
KG	148	126	137.2
PRIMARY	140	118	129
JHS	118	79.1	101
SHS	51.7	33.9	44.6
<b>Gender Parity Index</b>			
	<b>MALE</b>	<b>FEMALE</b>	<b>AV. TOTAL</b>
KG	3,390	2,877	0.85
PRIMARY	7,301	5,594	0.77
JHS	2,115	1,157	0.55
SHS	881	475	0.54
<b>Teacher – Pupil Ratio</b>			
	<b>No. OF TEACHERS</b>	<b>Teacher: Pupil ratio</b>	<b>Trained teacher ratio</b>
KG	127	49	96: 1
PRIMARY	398	32	51:1
JHS	186	18	19:1
SHS	49	28	35:1

#### PUPIL TRAINED TEACHER RATIO

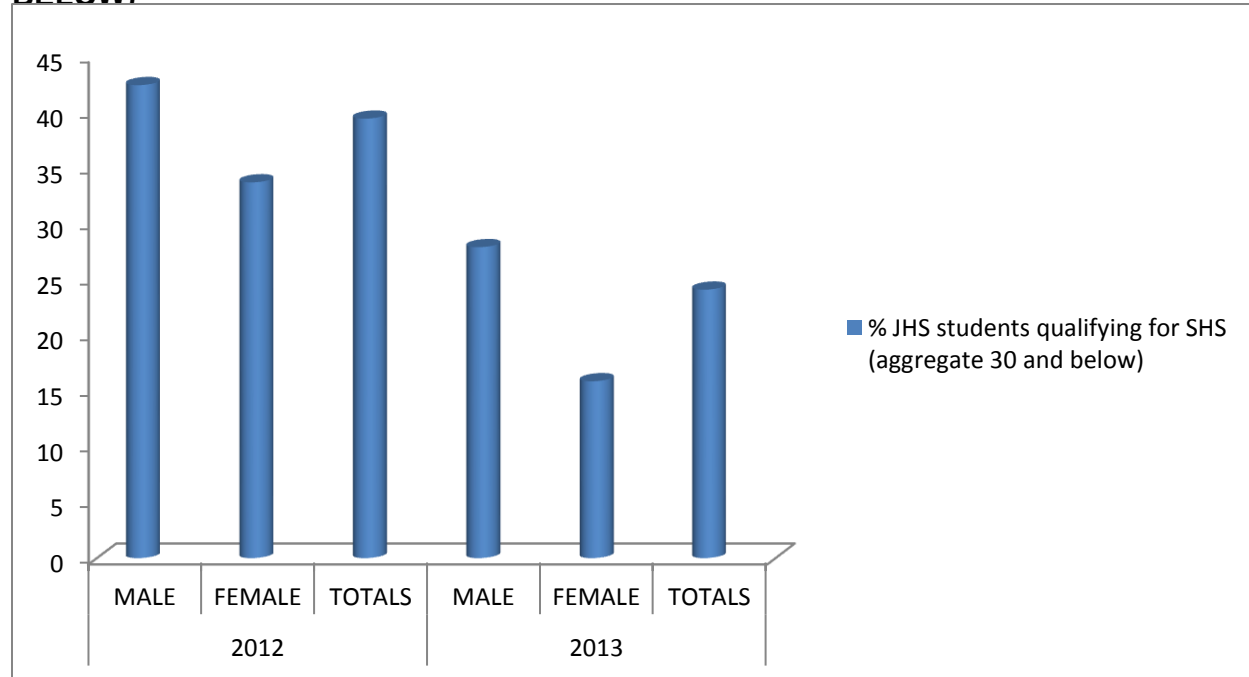
Indicator	2012			2013		
	TOTAL ENROLMENT	No. OF TEACHERS	TOTALS	TOTAL ENROLMENT	No. OF TEACHERS	TOTALS
KG	6,267	111	51:1	6,267	127	49:1
PRIMARY	12,895	420	28:1	12,895	398	32:1
JHS	3,272	160	18:1	3,272	186	18:1
SHS	1,386	46	23:1	1,386	49	28:1
	2012			2013		
BECE	MALE	FEMALE	TOTALS	MALE	FEMALE	TOTALS
% JHS students qualifying for SHS (aggregate 30 and below)	42.4	33.7	39.4	27.9	15.9	24.1

Source: District Directorate of Education (Fourth Quarter 2013 Report)

## PUPIL TRAINED TEACHER RATIO



## PERCENTAGE OF JHS STUDENTS QUALIFYING FOR SHS (AGGREGATE 30 AND BELOW)



### GENERAL SUCCESSES

- CAMFED Ghana also supported the district with funds for organizing extra classes for the JHS 3 students who were preparing for their BECE.
- Some of the successes in the district are:
- Good BECE results for the past three years.
- Teacher's absenteeism have been closely monitored by staff of the DEO and DEOC.
- Judicious and timely use of funds.

### CHALLENGES

- Betrothal system in some communities
- Late Releases of funds
- Inadequate funds as compared with budgets
- Teachers refusing postings to hard to reach areas.
- Weak vehicles coupled with bad roads making supervision difficult.
- Poor performance of circuit supervisors.
- Lack of accommodation for teachers.

- There are also 18 junior high schools as against 74 primary schools.
- Constraints in the opening of new JHS due to lack of accommodation for existing ones.
- Inadequate furniture for all levels of education in the district.
- Inadequate classroom accommodation for schools in the surrounding areas.
- Reduction of contact hours by teachers through lateness, absenteeism, malingering and attendance of teachers at distant courses.
- Inadequate resources for the supervision and monitoring unit e.g. fuel, vehicles and motorbikes.
- Few teacher trainees sponsored by District Assembly.
- Lack of motivation from District Assembly to teachers' e.g. No District Best Teacher Awards.
- Inadequate means of transport for the directorate.

## **THE WAY FORWARD**

- District Assembly to sponsor more teachers at the Training College in order to absorb them into the district.
- The District Library built in Kumbungu town should be furnished with books and opened to the public.
- The current weak Nissan pickup being used by the District Director should be replaced by a new one. As an interim emergency measure, it should be completely overhauled.
- More Teachers' quarters and classroom accommodation should be provided for Kumbungu Senior High School.
- More untrained teachers should be employed to schools where they are needed most in the district.
- District Assembly, GOG and NGOs to build more structures for underserved schools.
- A vocational school for the disabled should be built in the district.
- Bicycle support packages should be instituted for pupils walking long distances to school.
- The Ghana Education Service, District Assembly and philanthropic organizations should support the ten circuit supervisors with ten (10) motorbikes for effective monitoring and supervision.
- District Assembly should award teachers during the 2014/2015

## 1.4.0 HEALTH SERVICE DELIVERY

### 1.4.1 Health Services Profile

	2012			2013		
	MALE	FEMALE	TOTAL	MALE	FEMALE	TOTAL
<b>HIV/AIDS</b>						
# of new HIV/AIDS cases	3	4	7	0	4	4
# of cumulative cases	0	0	0	0	8	8
# of VCT centres	0	0	3	0	0	6
# that have voluntarily been tested	34	76	110	21	66	87
# of collaborative meetings	0	0	0	0	0	1
# of AIDS persons on ART	0	0	0	0	0	0
<b># OF DEATHS</b>						
Infant deaths (community+institutional)	12	9	21	5	7	12
Under 5 deaths (0-59 Months)	25	31	56	24	29	53
Maternal deaths	0	2	2	0	0	0
<b>Top causes of maternal deaths:</b>						
i. Eclampsia	0	0	0	0	0	0
ii. Hyporolaemic shock	0	0	0	0	0	0

### Human Resource Capacity

CATEGORY	NO.	COMMENT
DDHS	1	At post
DPHN	1	Left for school
DCOs (Technical Officer)	2	At post
DCOs (Field Technician)	2	At post
Nutrition Officers	3	At post
Health Information	1	At post
Administrative staff	1	At post
Accounts staff	3	At post
Physician Assistants (MAs)	1	On maternity leave
Midwives	3	At post
Staff Nurses	4	At post
Community Health Nurses	25	11 on study leave
Enrolled Nurses	52	10 at King's Medical Centre
Mental Nurses	2	At post
<b>TOTAL</b>	<b>101</b>	

## HEALTH INFRASTRUCTURE

HEALTH FACILITY	STAUS
KINGS MEDICAL CENTRE	Operational
DALUN HEALTH CENTRE	Operational
SINGA CHPS	Operational
GBULLUNG HEALTH CENTRE	Operational
GIZAA CHPS	Operational
KUMBUNGU HEALTH CENTRE	Operational
KPULLINYIN CHPS	Operational
CHESHEGU CHPS	Operational
MBANAYILI CHPS	Operational
VOGGU CHPS	Operational
<b>10</b>	

## TOP TEN DISEASES IN KUMBUNGU DISTRICT

2012				2013			
No	DISEASES	TOTAL	%	No	DISEASES	TOTAL	%
1	Malaria	15,078	44	1	Malaria	22,912	44
2	Upper Respiratory Tract Infections	4,766	14	2	Upper Respiratory Tract Infections	7,914	15
3	Diarrhea Diseases	1,662	5	3	Rheumatism & Other Joint Pains	3,513	7
4	Acute Urinary Tract Infection	1,303	4	4	Diarrhea Diseases	2,723	5
5	Hypertension	1,193	3	5	Acute Urinary Tract Infection	1,823	4
6	Rheumatism & Other Joint Pains	1,087	3	6	Skin Diseases	1,659	3
7	Skin Diseases	1,067	3	7	Intestinal Worms	1,453	3
8	Anaemia	913	3	8	Anaemia	1,168	2
9	Intestinal Worms	900	3	9	Hypertension	1,143	2
10	Typhoid Fever	373	1	10	Acute Eye Infection	687	1
<b>All other Diseases</b>		<b>6,051</b>	<b>18</b>	<b>All other Diseases</b>		<b>6,677</b>	<b>13</b>

## TWO-YEAR TREND OF MALNUTRITION RATE BY SUB-DISTRICTS (2012-2013)

SUB-DISTRICT	MALNUTRITION			
	TARGET	ACHIEVEMENT	TARGET	ACHIEVEMENT
	2012		2013	
Kumbungu	3.0	6.0	3.0	8.3
Dalun	3.5	6.8	3.5	16.1
Gbullung	3.5	29.8	3.5	21.6
Gupanerigu	3.5	12.9	3.5	7.1
Voggu	3.5	1.5	3.5	8.7
District Average	<b>8.5</b>	<b>9.7</b>	<b>8.5</b>	<b>12.5</b>

*Source: District Health Directorate (2010-2013 Performance Review Presentation)*

## Challenges

- Inadequate staff accommodation.
- No functional District Health Committee
- Inadequate critical staff especially midwives, medical assistants and community health nurses.
- Lack of district hospital
- Poor data management at all levels
- Inadequate CHPS compounds
- Inadequate district assembly support for health activities
- Inadequate transport.
- Inadequate motivation for staff {org. Of party, uniforms, awards}

## WAYFORWARD

- Network with the Kumbungu district assembly to sponsor more critical staff.
- Put in place incentive package schemes for staff who accept postings to the district.
- Liaise with the district assembly and other development partners for the construction of office and staff accommodation.
- Collaborate with the district assembly to form the district health committee
- Organize in-service training for all category of staff
- Construction of a district hospital
- Collaborate with the Regional Health Directorate for more health staff
- Enhance interaction and collaboration with NHIS
- Need for permanent ambulances service in the district
- Establishment of a National Health Insurance Scheme in the district

## NATIONAL HEALTH INSURANCE SCHEME

The district still gets its Health Insurance services from Tolon district through one of their satellite offices in Kumbungu township.

However as part of measures to get a fully established NHIS office in the district, the district assembly is to rehabilitate temporal office accommodation for NHIS staff in Bontanga as a prerequisite for the construction of a permanent NHIS office in the district.

### 1.4.0 FOOD SECURITY AND AGRICULTURE

The District Agricultural Development Unit (DADU) seeks to:

- Facilitate the modernization of agriculture to achieve district food self-sufficiency and food security.
- To strengthen and maintain intra and inter sectoral linkages
- To facilitate and co-ordinate policy and programs in the agricultural sector.
- To strengthen institutional capacity of MOFA.

Extension coverage in the district is very low coupled with challenges the department is faced with. As it stands, the district has only one agric extension agent in charge of providing extension services on appropriate and new technologies to farmers.

## FOOD SECURITY PROGRAMMES AND PROJECTS

### AVERAGE YIELD OF MAJOR FOOD CROPS

CROP	2012		2013	
	TARGET(Mt/ha)	ACHIEVEMENT(Mt/ha)	TARGET(Mt/ha)	ACHIEVEMENT(Mt/ha)
Maize	2.0	1.6	2.0	1.6
Millet	1.7	1.6	1.7	1.2
Sorghum	1.8	1.6	1.8	1.5
Cowpea	1.8	1.5	1.8	1.5
Groundnut	1.6	1.3	1.6	1.2
Soya Bean	2.5	1.5	2.5	1.6
Rice	<b>4.0</b>	<b>4.0</b>	<b>4.0</b>	<b>3.5</b>

## CHALLENGES

- Unprecedented rainfalls
- Untimely dissemination of agricultural information
- Inadequate logistics
- Inadequate agric personnel

## LIVESTOCK PRODUCTION

LIVESTOCK	2012		2013	
	TARGET	ACHIEVEMENT	TARGET	ACHIEVEMENT
Cattle	5,600	4,851	6,000	5,261
Sheep	8,000	7,361	9,000	8,221
Goats	12,000	10,281	12,000	11,105
Poultry	40,000	38,384	40,000	42,300

## BLOCK FARM AND SADA

LIVESTOCK	AMOUNT		BENEFICIARIES	
	2012	2013	MALES	FEMALES
Block Farm	N/A	52,000	85	35
SADA	N/A	128,050	44	-
<b>TOTALS</b>	<b>N/A</b>	<b>180,050</b>	<b>129</b>	<b>35</b>

## CHALLENGES WITH THE IMPLEMENTATION OF PLANNED ACTIVITIES

- Inadequate technical staff personnel at DADU
- Inadequate extension agents
- Lack of residential accommodation for staff to stay in the district and provide services
- Inadequate logistics

## WAYFORWARD

- Reimplementation of the block farm programme
- Sensitize farmers on the need for repayment of block farm produce
- Implementation of the government fertilizer subsidy programme
- Use of high yielding seeds
- Employment of additional technical and supporting staff
- Mainstream conflict mitigation strategies in our extension approaches
- Support farmers to access credit facilities
- Sensitize farmers on the need for repayment of loans

## 1.5.0 WATER AND SANITATION

INDICATOR	2012		2013	
	TARGET (%)	ACHIEVEMENT (%)	TARGET (%)	ACHIEVEMENT (%)
% of population served with boreholes	30	10	30	21.4
% of population served with covered wells	10	5.1	10	6.1
% of population served with pipe-borne water	70	50	70	47

It is good to note that the water table in this part of the region is not favorable for borehole drilling as many attempt to drill had been unsuccessful because drillers often hit dry wells. Even in instances where the drilling is successful, the yield is poor as it cannot serve the people all year round.

## SOLID AND LIQUID WASTE DISPOSAL

INDICATOR	2012		2013	
	TARGET	ACHIEVEMENT	TARGET	ACHIEVEMENT
No. of final disposal sites	3	1	3	1
A. Solid waste	2	0	2	0
B. Liquid waste	1	0	1	0
% of population served with waste disposal facilities	50	25	50	32
A. Solid waste	20	15	20	17
B. Liquid waste	30	10	30	10
% of population with KVIP	15	8	20	15
% of population with other safe excreta disposal sources	30	25	60	52.1
% of households with safe excreta disposal facilities	1,500	251	1,500	350

## **CHAPTER TWO**

### **2.0 PRIORITISATION OF DEVELOPMENT ISSUES**

#### **2.1 KEY DEVELOPMENT ISSUES (GSGDA II THEMATIC AREAS)**

##### **2.1.1 HUMAN DEVELOPMENT, PRODUCTIVITY AND EMPLOYMENT**

###### **2.1.1.1 Education**

- Inadequate trained teachers in basic schools
- Low enrolment in basic schools
- High dropout rate especially among girls
- Inadequate school infrastructure
- Inadequate teachers Accommodation
- Inadequate furniture for both pupils and teachers at all levels
- Inadequate sanitary facilities
- High pupil teacher ratio

###### **2.1.1.2 Health**

- Inadequate health personnel
- Inadequate Voluntary Counseling and Testing centers
- Low patronage of the Anti-Retroviral Therapy by PLWHA
- Inadequate health infrastructure
- High rate of malnourished children
- High incidence of malaria
- Low skilled delivery

###### **2.1.1.3 Water and Sanitation**

- Inadequate sanitary facilities
- High rate of open defecation
- Inadequate access to portable water
- High number of broken down hand dug wells and boreholes in the communities

## **2.1.2 ACCELERATED AGRICULTURE MODERNISATION AND SUSTAINABLE NATURAL RESOURCE MANAGEMENT**

### **2.1.2.1 Agriculture / Food Security**

- Underutilization of agricultural land
- Low expansion of the irrigation sector
- Over reliance on rained fed agriculture
- Inadequate credit facilities for women income generating groups
- High post-harvest loses
- Inadequate office and residential accommodation for Agric officers
- Low technical know-how of farmers
- Inadequate tractor service
- High cost of agricultural inputs
- Inadequate agricultural extension agents

### **2.1.2.2 Environment**

- High incidence of Bush burning
- Seasonal flooding in communities around the white volta
- Low yields due to climate change
- Increased deforestation
- Land degradation (sand weaning )

## **2.1.3 TRANSPARENT AND ACCOUNTABLE GOVERNANCE**

### **2.1.3.1 Good Governance and Civic Responsibility**

- Inadequate staff residential accommodation
- Abandoned /uncompleted official projects
- Inadequate transport facilities (vehicles)
- Low Internal Generated Funds (IGF)
- Lack of internet facility at the Central Administration and other key departments
- Poor data and record management
- Area Councils / Sub-district structures under resourced

## **2.1.4 INFRASTRUCTURE, ENERGY AND HUMAN SETTLEMENTS**

### **2.1.4.1 Land Use and Transport**

- Poor pattern of development especially in Kumbungu
- No Town and Country Planning Officer(s) in the district
- A number of communities are not connected to the national grid
- Inaccessibility of public buildings to PWDS.
- Poor roads network
- Inadequate transport facilities



**POTENTIALS, OPPORTUNITIES, CONSTRAINTS AND CHALLENGES (POCC) ANALYSIS**

DEVELOPMENT ISSUES	POTENTIALS	OPPORTUNITIES	CONSTRAINTS	CHALLENGES
<b>ENVIRONMENT POCC ANALYSIS</b>				
1. Deforestation	<ul style="list-style-type: none"> <li>• Forest Guards</li> <li>• By-Laws</li> <li>• Forestry commission</li> </ul>	<ul style="list-style-type: none"> <li>• Donors/NGOs</li> <li>• SADA</li> <li>• Timber processing firm</li> <li>• DACF/NYEP</li> </ul>	<ul style="list-style-type: none"> <li>• Charcoal burning</li> <li>• Firewood felling</li> <li>• By –Laws not working</li> <li>• Illegal logging</li> </ul>	<ul style="list-style-type: none"> <li>• Bush fires</li> <li>• Inadequate funding</li> <li>• Activities of fulani herdsman</li> </ul>
2. Conflict	<ul style="list-style-type: none"> <li>• well established traditional council</li> <li>• security personnel</li> <li>• co-existence of ethnic groups</li> <li>• DISEC</li> </ul>	<ul style="list-style-type: none"> <li>• Donor partners</li> <li>• NGOs</li> <li>• Religious organization</li> <li>• REGSEC</li> </ul>	<ul style="list-style-type: none"> <li>• Chieftaincy disputes</li> <li>• Land disputes</li> <li>• Political intolerance</li> <li>• Discrimination</li> <li>• Ethnic misunderstanding</li> </ul>	<ul style="list-style-type: none"> <li>• Delay in settling chieftaincy disputes</li> <li>• Activities of fulani herdsman</li> <li>• Political interference</li> </ul>
3. Land degradation	<ul style="list-style-type: none"> <li>• Vast lands</li> <li>• By –Laws</li> <li>• Forest reserves</li> </ul>	<ul style="list-style-type: none"> <li>• Donor partners</li> <li>• NGOs</li> <li>• SADA</li> <li>• DACF</li> </ul>	<ul style="list-style-type: none"> <li>• Bad agriculture practices</li> <li>• Overgrazing</li> <li>• sand winning</li> </ul>	<ul style="list-style-type: none"> <li>• activities of fulani herdsman</li> <li>• Erosion</li> </ul>
4. Bush fires	<ul style="list-style-type: none"> <li>• Vast agriculture lands</li> <li>• Forest reserves</li> <li>• Forestry commission</li> </ul>	<ul style="list-style-type: none"> <li>• SADA</li> <li>• Donor Partners</li> <li>• NGOs</li> <li>• DA</li> </ul>	<ul style="list-style-type: none"> <li>• Farmers</li> <li>• Cigarette smokers</li> <li>• Fulani herdsman</li> </ul>	<ul style="list-style-type: none"> <li>• Activities of fulani herdsman</li> <li>• Drought</li> <li>• Harmattam</li> </ul>
<b>WATER AND SANITATION SECTOR POCC ANALYSIS</b>				
5. Inadequate portable water supply	<ul style="list-style-type: none"> <li>• Availability of underground water</li> <li>• Availability of rivers/dams</li> </ul>	<ul style="list-style-type: none"> <li>• Donor partners eg. UNICEF</li> </ul>	<ul style="list-style-type: none"> <li>• Low commitment of communities members eg. 5% capital cost</li> </ul>	<ul style="list-style-type: none"> <li>• Inadequate funds</li> <li>• Over reliance on donor partners</li> </ul>
6. Improper disposal of solid waste	<ul style="list-style-type: none"> <li>• Availability of land</li> <li>• Availability of refuse containers</li> </ul>	<ul style="list-style-type: none"> <li>• Excavated lands for waste disposal</li> </ul>	<ul style="list-style-type: none"> <li>• Inadequate refuse containers</li> <li>• Poor maintenance of refuse trucks</li> </ul>	<ul style="list-style-type: none"> <li>• High cost of refuse trucks and containers</li> </ul>
7. Inadequate	<ul style="list-style-type: none"> <li>• Availability of</li> </ul>	<ul style="list-style-type: none"> <li>• Donors partner</li> </ul>	<ul style="list-style-type: none"> <li>• Low commitment of</li> </ul>	<ul style="list-style-type: none"> <li>• Negative attitudes of</li> </ul>

household latrines	<ul style="list-style-type: none"> <li>space in building plot</li> <li>Low cost of local building materials</li> </ul>	NGOs eg UNICEF,	community members	contractors
<b>AGRICULTURAL AND PRIVATE SECTOR POCC ANALYSIS</b>				
8. Food insecurity	<ul style="list-style-type: none"> <li>Vast arable land</li> <li>Active farmers</li> <li>Rivers / dams for irrigation</li> <li>Natural pasture for grazing</li> </ul>	<ul style="list-style-type: none"> <li>Subsidies for agric inputs</li> <li>Loans</li> <li>Donor partners</li> <li>Block farming</li> </ul>	<ul style="list-style-type: none"> <li>Land disputes</li> <li>Repayment of loans is low</li> <li>Lack of storage facilities</li> <li>High post-harvest loss</li> </ul>	<ul style="list-style-type: none"> <li>Late arrival of inputs</li> <li>Erratic rainfall</li> <li>Wild bush fires</li> <li>Drought</li> <li>Inadequate extension staff</li> <li>Lack of irrigation facilities</li> </ul>
9. Underutilization of agricultural lands.	<ul style="list-style-type: none"> <li>Vast arable land</li> <li>Human labour</li> <li>Hard working farmers</li> </ul>	<ul style="list-style-type: none"> <li>Donor partners</li> <li>NGOs</li> <li>MOFA</li> </ul>	<ul style="list-style-type: none"> <li>Land disputes</li> </ul>	<ul style="list-style-type: none"> <li>Erratic rainfall</li> <li>Activities of fulani herdsmen</li> <li>Bush fires</li> </ul>
10. Lack of irrigation facilities.	<ul style="list-style-type: none"> <li>Water bodies eg Dakar and Oti rivers</li> <li>Fertile valleys</li> </ul>	<ul style="list-style-type: none"> <li>Available work force</li> <li>Seasoned Extension staff</li> </ul>	<ul style="list-style-type: none"> <li>Low knowledge of farmers in irrigation farming</li> </ul>	<ul style="list-style-type: none"> <li>High cost of irrigation machineries</li> </ul>
11. Over reliance on rain fed agriculture.	<ul style="list-style-type: none"> <li>Available water bodies</li> </ul>	<ul style="list-style-type: none"> <li>Geographical position of the district</li> </ul>	<ul style="list-style-type: none"> <li></li> </ul>	<ul style="list-style-type: none"> <li>Erratic weather conditions</li> </ul>
12. Low income of farmers.	<ul style="list-style-type: none"> <li>Availability of micro finance</li> </ul>	<ul style="list-style-type: none"> <li>Seasoned Extension staff</li> </ul>	<ul style="list-style-type: none"> <li>Low yields</li> <li>Low prices</li> </ul>	<ul style="list-style-type: none"> <li>No guaranteed price for agric products</li> </ul>
<b>POCC ANALYSIS ON GENDER</b>				
13. Low representation of women in decision making	<ul style="list-style-type: none"> <li>Competent women</li> </ul>	<ul style="list-style-type: none"> <li>Donor partners</li> <li>NGOs</li> <li>Favourable policies</li> </ul>	<ul style="list-style-type: none"> <li>Low self confidence</li> <li>Inadequate funding</li> </ul>	<ul style="list-style-type: none"> <li>Customs and beliefs</li> <li>Cultural barriers</li> </ul>
14. Poor performance of girls in schools	<ul style="list-style-type: none"> <li>Availability of schools</li> <li>Female teachers as role models</li> </ul>	<ul style="list-style-type: none"> <li>Support from donor agencies</li> <li>Award schemes for girl child</li> </ul>	<ul style="list-style-type: none"> <li>poor attitude of girls toward education</li> <li>gender roles</li> <li>poor parental control</li> </ul>	<ul style="list-style-type: none"> <li>poverty</li> <li>peer pressure</li> <li>single parenting</li> </ul>
15. Low enrolment of	<ul style="list-style-type: none"> <li>Availability of</li> </ul>	<ul style="list-style-type: none"> <li>Donor support</li> </ul>	<ul style="list-style-type: none"> <li>Truancy</li> </ul>	<ul style="list-style-type: none"> <li>Poverty</li> </ul>

girl from upper primary to JHS	<ul style="list-style-type: none"> <li>basic schools</li> <li>Role models</li> </ul>	<ul style="list-style-type: none"> <li>Favourable gov't policies</li> </ul>	<ul style="list-style-type: none"> <li>Early marriage</li> <li>Teenage pregnancy</li> </ul>	<ul style="list-style-type: none"> <li>Migration</li> <li>Foreign fashion</li> </ul>
<b>EDUCATION SECTOR POCC ANALYSIS</b>				
16. Inadequate school infrastructure	<ul style="list-style-type: none"> <li>Vast lands</li> <li>Human resource</li> </ul>	<ul style="list-style-type: none"> <li>Donor partners</li> <li>NGOs</li> <li>GETfund</li> <li>DACF</li> </ul>	<ul style="list-style-type: none"> <li>Land dispute</li> </ul>	<ul style="list-style-type: none"> <li>Inadequate funds</li> </ul>
17. Inadequate furniture	<ul style="list-style-type: none"> <li>Wood artisans</li> <li>PTA/SMC</li> </ul>	<ul style="list-style-type: none"> <li>DACF</li> <li>GETfund</li> <li>SfL</li> </ul>	<ul style="list-style-type: none"> <li>Illegal felling of trees</li> </ul>	<ul style="list-style-type: none"> <li>Poverty</li> <li>Wild fire</li> <li>Capitation grant not adequate</li> </ul>
18. Few JHS	<ul style="list-style-type: none"> <li>Availability pupils/students</li> <li>Teachers</li> <li>Textbooks</li> </ul>	<ul style="list-style-type: none"> <li>GETfund</li> <li>Donor partners</li> <li>NGOs</li> </ul>	<ul style="list-style-type: none"> <li>Land disputes</li> <li>Location disputes</li> </ul>	<ul style="list-style-type: none"> <li>Inadequate funds</li> </ul>
19. Inadequate trained teachers in basic schools	<ul style="list-style-type: none"> <li>DA support</li> </ul>	<ul style="list-style-type: none"> <li>Favourably gov't policies</li> <li>UTDBE</li> </ul>	<ul style="list-style-type: none"> <li>Inadequate qualify students</li> <li>Interest in science subjects is low</li> </ul>	<ul style="list-style-type: none"> <li>Poverty</li> <li>Inadequate support to qualify students</li> </ul>
20. Low female enrolment (JHS/SHS)	<ul style="list-style-type: none"> <li>There are schools</li> <li>Teachers</li> <li>curriculum materials</li> </ul>	<ul style="list-style-type: none"> <li>Donor partners</li> <li>DA support (incentives packages)</li> </ul>	<ul style="list-style-type: none"> <li>Cultural practice</li> <li>Teenage pregnancy</li> <li>Low interest in science subjects</li> </ul>	<ul style="list-style-type: none"> <li>Poverty</li> <li>Inadequate support from gov't</li> </ul>
21. Inadequate infrastructures (SHS)	<ul style="list-style-type: none"> <li>Vast land</li> <li>Human resource</li> </ul>	<ul style="list-style-type: none"> <li>DACF</li> <li>GETfund</li> <li>Donor partners</li> </ul>	<ul style="list-style-type: none"> <li>Encroachment on school lands</li> </ul>	<ul style="list-style-type: none"> <li>Inadequate funding</li> </ul>
<b>HEALTH SECTOR POCC ANALYSIS</b>				
22. Inadequate health personnel	<ul style="list-style-type: none"> <li>Availability of health facilities</li> <li>Qualify science students</li> </ul>	<ul style="list-style-type: none"> <li>Training institutions are sufficient and medical schools</li> <li>Scholarship is available for students</li> </ul>	<ul style="list-style-type: none"> <li>Few qualify students</li> <li>Low interest in science</li> <li>Poverty</li> </ul>	<ul style="list-style-type: none"> <li>High cost of training fees</li> <li>Limited scholarship packages</li> </ul>
23. High rate of malnourished	<ul style="list-style-type: none"> <li>Availability of fertile land for</li> </ul>	<ul style="list-style-type: none"> <li>Subsidized farm inputs</li> </ul>	<ul style="list-style-type: none"> <li>High levels of illiteracy</li> <li>Land disputes</li> </ul>	<ul style="list-style-type: none"> <li>Unpredictable weather conditions</li> </ul>

children	<ul style="list-style-type: none"> <li>cereal cultivation</li> <li>Availability of trained and nutrition staff</li> </ul>	<ul style="list-style-type: none"> <li>Availability of health centres</li> </ul>	<ul style="list-style-type: none"> <li>Insufficient rehabilitation centres</li> </ul>	<ul style="list-style-type: none"> <li>High cost agric inputs</li> </ul>
24. Low consumption rate iodated salt	<ul style="list-style-type: none"> <li>Availability of iodated salt</li> <li>By –Law</li> <li>Rebagging of iodated in Voggu Kushebo</li> </ul>	<ul style="list-style-type: none"> <li>WFP</li> <li>Gov't policy</li> </ul>	<ul style="list-style-type: none"> <li>Low income</li> <li>Low level education</li> </ul>	<ul style="list-style-type: none"> <li>High cost of iodated salt</li> <li>Inadequate testing equipment</li> </ul>

## CHAPTER THREE

### 3.0 DEVELOPMENT GOALS, OBJECTIVES, STRATEGY.

The overall objective of the Kumbungu District for the implementation of the 2014-2017 District Medium Term Development Plan (DMTDP) is **to be a district of excellence in local governance that nurtures self-reliant, progressive, orderly, safe and globally competitive communities sustained by an empowered citizenry**

#### Thematic Areas, Objectives and Strategies:

#### 1. Accelerated Agricultural Modernization and Sustainable Natural Resources Management.

##### Agriculture:

- Establishment of soya processing factory
- Establish small scale agro processing centres in all area councils.
- Increase crop production by 50%.
- Increase livestock production from 35% to 50%
- Expansion of Irrigation facilities.
- Facilitate the production export crops (Butter nut, mangoes, etc.)
- Build and rehabilitate existing storage facilities

#### 3. Enhancing Competiveness in Ghana's Private Sector.

##### Objectives:

- To provide technical trainings to women groups for improved quality standards
- To expand MSE coverage in the district
- To improve the local economic development of the district
- To build the capacity of the youth for productive engagements

##### Strategies

- Promote Public Private Partnerships
- Facilitate the establishment of artisans and professional associations.
- Develop and implement youth training programmes.

## INFRASTRUCTURE, ENERGY AND HUMAN SETTLEMENT

##### Objectives

- Ensure that 80% of the communities in the district are connected to the National Grid.
- To Enhance the human and institutional capacities for effective land use planning and management

- To facilitate the sustainable use and management of key natural resources that supports the development of rural areas.
- To improve upon the feeder road network to facilitate the movement of people and farm produce.
- Promote a sustainable, spatially integrated and orderly development of human settlement to support socio-economic development

### **Strategies**

- Facilitate the connection of communities and institutional facilities to the national grid.
- Construct /Rehabilitate road infrastructure in the district
- Implement and widen the scope of the Street Naming and property addressing exercise in the district
- Ensure effective and proficient use of land resources

## **4. Human Development, Productivity and Employment**

### **Education:**

#### **Objectives**

- To improve hygiene and sanitation in the basic schools.
- To increase school enrolment at all levels with much emphasis on the girl child.
- To effectively increase teaching and learning at all levels in the district
- To promote equitable access to quality education at all levels.
- To provide and improve school infrastructure (classrooms and furniture) district wide.

#### **Strategies**

- Provide basic schools with water and sanitation infrastructure facilities.
- Expand coverage of the Ghana School Feeding Programme in the district.
- Make adult literacy programmes more efficient and acceptable.
- Establish basic schools in all underserved communities
- Accelerate the construction / rehabilitation of basic school infrastructure especially schools under trees.
- Improve community participation in the delivery of education through:
- Strengthen Small Management Committee (SMCs) and Parent Teacher Associations.
- Increase Enrolment Drive.
- Increase supervision and monitoring
- Provide adequate teaching and learning materials
- Improve teacher: pupil ratio

## **Health**

### *Objectives*

- 70% increase in access to basic health care by the end of 2017.

### **Strategies**

- Increase number of supplementary feeding centres.
- Promote health education in the district
- Provide both office and residential accommodation to health service providers
- Promote TIN and iodated salt consumption.
- Establish 20 CHPS compounds in the District.
- Increase coverage of NHIS.
- Build the capacity of health staff.
- Improve surveillance of HIV/AIDS

## **Water and Sanitation**

### *Objectives*

- Increase portable water coverage of the population from 71.4% to 84.0%.
- Increase access to household latrines by 10%.
- Ensure that at least 20% of the communities achieve ODF status.
- Put in place efficient and sustainable waste management

### **Strategies**

- Improve the supply of mechanized water supply systems.
- Promote private sector to provide goods and services
- Promote and provide efficient waste management systems
- Built capacity of Environmental Health Service officers in the district
- Promote household and institutional sanitation in the district
- Construct and rehabilitate potable water facilities
- To attain Open Defecation Free (ODF)
- Increase sensitization about CLTS in the district.
- Promote collaboration with NGOs, Donors and other stakeholders to expand GWCL extensions to communities.

## **5. Transparent and Accountable Governance**

### **Objectives**

- Establish a reliable data bank on socio-economic resources in the District.
- Ensure effective participation of women in development
- To reduce crime rate and insecurity in the district
- To ensure effective and efficient functioning of the District Assembly and Sub-Structures.
- To ensure effective participation and collaboration of all stakeholders in programme/project initiation, planning, implementation, monitoring and Evaluation processes.

### **Strategies**

- Improve upon internal generation of funds and efficient management for local developmental
- Build capacity of D.A. and Sub-structures for effective work.
- Provide logistics for District Assembly and Area Council Offices
- Effective capacity building for GDO, women staff of the Central Administration and Assembly women.
- Support self-help projects and encourage local participation
- Beef up security, law and order in the district.
- Intensify Monitoring and Evaluation of development programmes and projects in the district.
- Mainstream gender into socio-economic development

## **3.1 DEVELOPMENT PRIORITIES LINKED TO THE GSGDA II**

### **3.1.1 HUMAN DEVELOPMENT, PRODUCTIVITY AND EMPLOYMENT**

#### **3.1.1.1 Education**

- Construction of 12 No. classroom block for basic schools
- Provision of furniture for basic schools
- Institute and consistently execute a Best Teacher Award Scheme
- Improve upon School Monitoring and Supervision
- Construct 6 No. residential accommodation for circuit supervisors
- Build capacities of Parent Teacher's Association
- Organize quizzes for Junior High Schools
- Organize remedial classes and mock examination for final year pupils in J.H.S.
- Provide sponsorships to teacher trainees and be bounded to serve in the district.
- Provide incentive packages for children in remote areas.
- Organize inservice training for teachers in the district

#### **3.1 .1.2 Health**

- Procure 2No. Vehicles and 12No. Motor bikes to enhance better service delivery.
- Construction of office accommodation to health staff.
- Construction of residential accommodation to health staff
- Provide sponsorship packages to health trainees and bound them to serve in the district.
- D/A should lobby for Health Training School. E.g. Community health and Midwifery training school.
- Acquisition of life jackets from NADMO through the Regional Coordinator
- Construction of 6No. CHPs compound
- Renovation of 4No. CHPs compound
- Support the mental health bill

## **3.2. ACCELERATED AGRIC MODERNIZATION AND SUSTAINABLE NATURAL RESOURCES MANAGEMENT**

### **3.2.1 Agric Modernisation**

- Facilitate the registration of farmers as seed producers and the formation of District SEEDPAG
- Build the capacities of seed producers on improved technologies in seed productions
- Carry out demonstrations on improved technologies with farmers and other stakeholders
- Contact farmers regularly through home and farm visits to diffuse agricultural bottlenecks
- Build the capacities of FBOs to support extension agents in extension delivery
- Build the capacities of farmers on post-harvest management of crops to reduce losses
- Train 40 women farmer groups annually on food processing, nutrition, fortification, handling, home management and sanitation to ensure food safety and security
- Organize and maintain agricultural value chain for staple food crops grown
- Rehabilitate 2 No. dams annually to facilitate dry season vegetable production
- Establish bench mark data on selected commodities (Crop yield sample survey, livestock census, commodity market prices)
- Promote production of Export and Industrial crops
- Assist farmers to develop mango production as cash crops
- Facilitate soya bean farmers to access SADA support for production
- Identify farmers and assist them to source SADA support for Butter Nut production for export
- Collaborate with cotton companies to support cotton production in the district
- Increase Livestock and Poultry Development
- Sensitize farmers on breed selection/inbreeding livestock production
- Assist farmers to source SADA support for Rabbit production
- Assist farmers to source support from SADA to go into guinea fowl production
- Build the capacity of 200livestock farmers annually on improved animal housing and management
- Carry out animal disease surveillance control and prophylactic treatment of sick animals
- Vaccinate livestock and poultry against schedule diseases (CBPP, PPR, Anthrax, NCD) regularly
- Rehabilitate existing fish ponds and construct 1 pond annually to enhance aquaculture
- Build capacities of fishermen on appropriate fish harvesting techniques
- Organize stakeholder review meetings quarterly
- Organize orientation courses for staff to enhance effective service delivery and coordination
- Constitute collaborative M&E team with stakeholders to supervise and monitor interventions executed in the district every month
- Organize joint planning sessions with development partners annually
- Refurbish DADU office complex

- Procure 1No pick up and 12 motor-bikes to facilitate field trekking
- Sensitize farmers on indiscriminate bush burning and other land degradation practices annually
- Build the capacity of farmers on appropriate land tillage practices and other conservative practices
- Train farmers and agro-chemical dealers on handling and correct use of agro-chemicals annually
- Facilitate the establishment of woodlots in each zone
- Promote the use of energy saving stoves to minimize tree felling
- Organize 2 field days in each zone annually for farmers to show case performance of implementing interventions
- Youth organized and supported to engage in block farming
- Train farmer in crops, livestock and gender mainstreaming

### **3.3 WATER, ENVIRONMENTAL SANITATION AND HYGIENE**

- Carry out sensitization on water and sanitation issues
- Hold Consultative meetings with local authorities. E.g. chiefs, opinion leaders, religious leaders, youth groups, etc.
- Carry out monthly clean-up exercises (first Saturday of every month).
- Provision of 3No. Tricycles for each electoral area.
- Procurement of 2No. refuse containers for each electoral areas
- Enact bye-laws on the construction of household toilets.
- Mapping of all sanitation points.
- Convert funds for construction of toilets into materials for household toilet construction
- Formation of water and sanitation management teams in all electoral areas.
- Enact Policy on rain water harvesting.
- Implementation of “Pay As You Fetch” (Direct sales) for water.
- Provide accountability of water and sanitation activities in the district.
- Community engagement in project implementation.
- Facilitate ownership of water and sanitation projects by the community members.
- Construct 5No. institutional latrines
- Construct small town water systems
- Rehabilitation of 3No boreholes

### **3.4 ENHANCING COMPETIVENESS IN GHANA’S PRIVATE SECTOR**

- Provide Counseling services to groups engaged in economic activities.
- Organize Business Orientation seminars.
- Organize stakeholder’s forum.
- Provide Technical Training in soap making to women groups

- Provide training and development.
- Facilitate access to credit facilities by groups.
- Provide training in health and safety management.
- Build 15No. Market stall in the district.
- Construct feeder roads to facilitate economic activities.
- Facilitate the production of butter nut squash.

# CHAPTER FOUR

## (PROGRAMME OF ACTION FOR 2014-2017)

**THEMATIC AREA: ACCELERATED AGRICULTURAL MODERNIZATION AND SUSTAINABLE NATURAL RESOURCE MANAGEMENT**

Objective	Strategies	Activities	Location	Time frame (Year)				Indicative Budget GH¢			Implementing Agencies	
				2014	2015	2016	2017	GOG	IGF	DONOR	Lead	Collab
Improved agricultural productivity		Facilitate the registration of farmers as seed producers and the formation of District SEEDPAG	District wide						3,000.00		D/A	MoFA
		Build the capacities of seed producers on improved technologies in seed productions						4,000.00			D/A	MoFA
		Carry out demonstrations on improved technologies with farmers and other stakeholders	Botanga					2,000.00			D/A	MoFA
		Contact farmers regularly through home and farm visits to diffuse agricultural bottlenecks	District-wide					2,500.00			D/A	MoFA
		Build the capacities of FBOs to support extension agents in	District-wide					3,000.00			D/A	MoFA

Objective	Strategies	Activities	Location	Time frame (Year)				Indicative Budget GH¢			Implementing Agencies		
				2014	2015	2016	2017	GOG	IGF	DONOR	Lead	Collab	
		extension delivery											
		Build the capacities of farmers on post-harvest management of crops to reduce losses	District-wide					2,500.00				D/A	MoFA
Reduce production and distribution risks/bottleneck in agriculture and industry		Train 40 women farmer groups annually on food processing, nutrition, fortification, handling, home management and sanitation to ensure food safety and security	District-wide							5,000.00		D/A	MoFA
		Organize and maintain agricultural value chain for staple food crops grown	District-wide					1,500.00				D/A	MoFA
		Rehabilitate 2 No. dams annually to facilitate dry season vegetable production	District-wide					400,000.00				D/A	MoFA
		Establish bench mark data on selected commodities (Crop yield sample survey,	District-wide							8,00.00			D/A

Objective	Strategies	Activities	Location	Time frame (Year)				Indicative Budget GH¢			Implementing Agencies	
				2014	2015	2016	2017	GOG	IGF	DONOR	Lead	Collab
		livestock census, commodity market prices)										
Competitiveness and enhance integration into domestic and international markets		Promote production of Export and Industrial crops	District-wide					1,000.00			D/A	MoFA
		Assist farmers to develop mango production as cash crops	District-wide						2,000.00		D/A	MoFA
Promote selected crop development for food security, export and industry		Facilitate soya bean farmers to access SADA support for production	District-wide							2,000.00	D/A	MoFA
		Identify farmers and assist them to source SADA support for Butter Nut production for export	District-wide					2,000.00			D/A	MoFA
		Collaborate with cotton companies to support cotton production in the district	District-wide					1,500.00			D/A	MoFA

Objective	Strategies	Activities	Location	Time frame (Year)				Indicative Budget GH¢			Implementing Agencies	
				2014	2015	2016	2017	GOG	IGF	DONOR	Lead	Collab
Promote livestock and poultry development for food security and income		Increase Livestock and Poultry Development	District-wide					4,500.00			D/A	MoFA
		Sensitize farmers on breed selection/inbreeding livestock production	District-wide					1,500.00			D/A	MoFA
		Assist farmers to source SADA support for Rabbit production	District-wide					5,000.00			D/A	MoFA
		Assist farmers to source support from SADA to go into guinea fowl production	District-wide					6,000.00			D/A	MoFA
		Build the capacity of 200livestock farmers annually on improved animal housing and management	District-wide					2,000.00			D/A	MoFA
		Carry out animal disease surveillance control and prophylactic treatment of sick animals	District-wide					1,500.00			D/A	MoFA
		Vaccinate livestock and poultry against schedule diseases	District-wide					2,500.00			D/A	MoFA

Objective	Strategies	Activities	Location	Time frame (Year)				Indicative Budget GH¢			Implementing Agencies	
				2014	2015	2016	2017	GOG	IGF	DONOR	Lead	Collab
		(CBPP, PPR, Anthrax, NCD) regularly										
Promote fisheries development for food security and income		Rehabilitate existing fish ponds and construct 1 pond annually to enhance aquaculture	Bontanga					30,000.00			D/A	MoFA
		Build capacities of fishermen on appropriate fish harvesting techniques	District-wide					1,500.00			D/A	MoFA
Improve institutional coordination for agriculture development		Organize stakeholder review meetings quarterly	Kumbungu					9,000.00			D/A	MoFA
		Organize orientation courses for staff to enhance effective service delivery and coordination	Kumbungu					7,000.00			D/A	MoFA
		Constitute collaborative M&E team with stakeholders to supervise and monitor interventions executed in the district every month	Kumbungu						5,000.00		D/A	MoFA

Objective	Strategies	Activities	Location	Time frame (Year)				Indicative Budget GH¢			Implementing Agencies	
				2014	2015	2016	2017	GOG	IGF	DONOR	Lead	Collab
		Organize joint planning sessions with development partners annually	Kumbungu						4,000.00		D/A	MoFA
		Refurbish DADU office complex	Kumbungu					25,000.00			D/A	MoFA
		Equip DADU office with computers/accessories , steel cabinets, air conditioners, photocopiers, LCD projector and Digital camera	Kumbungu					50,000.00			D/A	MoFA
		Procure 1No pick up and 12 motor-bikes to facilitate field trekking	Kumbungu					80,000.00			D/A	MoFA
Institute appropriate regulatory framework and economic incentives for effective coastal resource management		Sensitize farmers on indiscriminate bush burning and other land degradation practices annually	District-wide					2,000.00			D/A	MoFA
		Build the capacity of farmers on appropriate	District-wide						2,000.00		D/A	MoFA

Objective	Strategies	Activities	Location	Time frame (Year)				Indicative Budget GH¢			Implementing Agencies	
				2014	2015	2016	2017	GOG	IGF	DONOR	Lead	Collab
		land tillage practices and other conservative practices										
		Train farmers and agro-chemical dealers on handling and correct use of agro-chemicals annually	District-wide					2000.00			D/A	MoFA
		Facilitate the establishment of woodlots in each zone	District-wide							3,000.00	D/A	MoFA
		Promote the use of energy saving stoves to minimize tree felling	District-wide						4,000.00		D/A	MoFA
Reduce production and distribution risk/bottlenecks in agriculture and industry		Organize 2 field days in each zone annually for farmers to show case performance of implementing interventions	Kumbungu					5,000.00			D/A	MoFA
		Youth organized and supported to engage in block farming	District wide					7,000.00			D/A	MoFA/GYEE DA
Promote livestock and poultry dev't for food security		Train farmer in crops, livestock and gender mainstreaming	District wide							3,000.00	D/A	MoFA

Objective	Strategies	Activities	Location	Time frame (Year)				Indicative Budget GH¢			Implementing Agencies	
				2014	2015	2016	2017	GOG	IGF	DONOR	Lead	Collab
Mitigate and reduce natural disasters and reduce risks and vulnerability		Enhancing professional competence of staff of NADMO in disaster Management through structural training programme at all levels	Kumbungu					5,000.00			NADMO	D/A,DPs,TCP D,NGOs
		Undertake public education on early warning system	District-wide					1,500.00			NADMO	D/A,DPs,TCP D,NGOs
		Carry out effective monitoring and evaluation mechanisms	District-wide							3,000.00	NADMO	D/A,DPs,TCP D,NGOs
		Establish emergency response team to undertake prevention, emergency response and recovery activities	District-wide					2,000.00			NADMO	D/A,DPs,TCP D,NGOs
		Establishment and Training of fire fighters	District-wide					3,000.00			NADMO	D/A,DPs,TCP D,NGOs
		Formation and re-activation of DVGS	District-wide					4,000.00			NADMO	D/A,DPs,TCP D,NGOs
		Formation of district disaster management committee	Kumbungu							3,000.00	NADMO	D/A,DPs,TCP D,NGOs
		Undertake tree planting exercises	District-wide							7,000.00	NADMO	D/A,DPs,TCP D,NGOs

**THEMATIC AREA: ENHANCE COMPETIVENESS IN GHANA'S PRIVATE SECTOR**

Objective		Activities	Location	Time frame				Indicative Budget GH¢			Implementing Agencies	
				201 4	201 5	201 6	201 7	GOG	IGF	DONOR	Lead	Collab
Improve efficiency and competitiveness of MSEs		Provide Counseling services to groups engaged in economic activities.	District-wide					10,000.00			BAC	D/A
		Organize Business Orientation seminars.	District-wide					10,000.00			BAC	D/A
		Organize stakeholder's forum.	District-wide					3,000.00			BAC	D/A
		Provide Technical Training in soap making to women groups	District-wide					8,000.00			BAC	D/A
		Provide training and development.	District-wide					5,000.00			BAC	D/A
		Facilitate access to credit facilities by groups.	District-wide					3,000.00			BAC	D/A
Ensure the health, safety and economic interest of consumers		Provide training in health and safety management.	District-wide					5,000.00			BAC	D/A
Ensure rapid industrialization driven by strong linkages to agriculture and		Build 15No. Market stall in the district.	Kumbungu					200,000.00			D/A	D/A
		Construct feeder roads to facilitate economic activities.	All Area Councils					1,000,000.00			D/A	D/A

other natural resource management		Facilitate the production of butter nut squash.	District-wide					4,000.00			BAC	D/A
-----------------------------------	--	---	---------------	--	--	--	--	----------	--	--	-----	-----

THEMATIC AREA: HUMA DEVELOPMENT, PRODUCTIVITY AND EMPLOYMENT												
Objective	Strategy	Activities	Location	Time frame				Indicative Budget GH¢			Implementing Agencies	
				2014	2015	2016	2017	GOG	IGF	DONOR	Lead	Collab
Improve quality of teaching and learning	Provide adequate teaching and learning materials	<b>EDUCATION</b>										
		Organize quizzes for Junior High Schools	District-wide						5,000.00		GES	D/A, DPs
		Organize remedial classes and mock examination for final year pupils in J.H.S.	District-wide							70,500.00	GES	D/A, DPs
To promote equitable access to quality education at all levels.		Provide incentive packages for children in remote areas.	District-wide						4,000.00		GES	D/A, DPs
		Provide sponsorships to teacher trainees and be bounded to serve in the district.	District-wide						7,000.00		GES	D/A, DPs
		Organize inservice training for teachers in the district	District-wide					5,000.00			GES	D/A, DPs
To provide and improve school	Accelerate the construction /	Construction of 12No. Classroom blocks.	District-wide					4,000,000			GES	D/A, DPs

infrastructure (classrooms and furniture) district wide	rehabilitation of basic school infrastructure especially schools under trees.  Strengthen Small Management Committee (SMCs) and Parent Teacher Associations	Construction of 6No. accommodation for circuit supervisors	All area council					3,000,000			GES	D/A, DPs
		Provide classroom furniture to schools.	District-wide					50,000.00			GES	D/A, DPs
		Intensify monitoring and supervision.	District-wide						5,000.00		GES	D/A, DPs
		Build capacities of Parents Teachers Association (P.T.A) and School Management Committees (SMEs) annually	District-wide					3,000.00			GES	D/A, DPs
To improve quality teaching and learning at all levels		Observe independence day celebrations	District-wide				6,000.00					
		<b>HEALTH</b>										
70% increase in access to basic health care by the end of 2017		Procure 2No. Vehicles and 12No. Motor bikes to enhance better service delivery.	District-wide					160,000.00			MOH, GHS, D/A,	DPs & NGOS
	Provide both office and residential accommodation to health service	Construction of office accommodation to health staff.	Kumbungu					1,000,000			GES	D/A, DPs
		Construction of residential accommodation to health staff	Kumbungu					1,000,000			GES	D/A, DPs



**THEMATIC AREA: INFRASTRUCTURE AND HUMAN SETTLEMENT DEVELOPMENT**

**FOCUS AREA: WATER, ENVIRONMENTAL SANITATION AND HYGIENE**

Objective	Strategy	Activities	Location	Time frame				Indicative Budget GH¢			Implementing Agencies	
				2014	2015	2016	2017	GOG	IGF	DONOR	Lead	Collab
Ensure efficient management of water resources	Promote household and institutional sanitation in the district	Carry out sensitization on water and sanitation issues	District-wide						5,000.00		EHD	D/A, DPs
		Hold Consultative meetings with local authorities. E.g. chiefs, opinion leaders, religious leaders, youth groups, etc.	District-wide				5,000.00				EHD	D/A, DPs
		Carry out monthly clean-up exercises (first Saturday of every month).	District-wide						6,000.00		EHD	D/A, DPs
	Promote and provide efficient waste management systems	Provision of 3No. Tricycles foreach electoral area.	All electoral areas					20,000.00			EHD	D/A, DPs
		Procurement of 2No. refuse containers for each electoral areas	All electoral areas					10,000.00			EHD	D/A, DPs
		Enact bye-laws on the construction of household toilets.	District-wide						3,000.00		EHD	D/A, DPs
		Mapping of all sanitation points.	District-wide							5,000.00	EHD	D/A, DPs
		Convert funds for construction of toilets into materials for household toilet	District-wide					1,200.00			EHD	D/A, DPs

		construction.										
		Formation of water and sanitation management teams in all electoral areas.	District-wide				2,000.00			EHD	D/A, DPs	
		Enact Policy on rain water harvesting.	District-wide					2,000.00		EHD	D/A, DPs	
		Facilitate ownership of water and sanitation projects by the community members through sensitization	District-wide				1,000.00			EHD	D/A, DPs	
	Promote household and institutional sanitation in the district	Construct 5No. institutional latrines	Singa & Kumbungu						500,000.00	EHD	D/A, DPs	
		Construct small town water systems	Singa						100,000.00	EHD	D/A, DPs	
	Construct and rehabilitate potable water facilities	Rehabilitation of 3No boreholes	Voggu, Voggu Kushibo and Kuli						70,000.00	EHD	D/A, DPs	

**THEMATIC AREA: TRANSPARENT AND ACCOUNTABLE GOVERNANCE**

**FOCUS AREA: DEEPENING THE PRACTICE OF DEMOCRACY AND INSTITUTIONAL REFORM**

Objective	Strategy	Activities	Location	Time frame (Year)				Budget GHC			Implementing Agencies	
				1	2	3	4	GOG	IGF	DONOR	Lead	Collab
Strengthen arms of government and independent governance institutions	Ensure equitable distribution of resources to achieve relative resource parity	Rehabilitation of 6-unit classroom block	Zangbalung					23,865.65			D/A	D/A, DPs
		Rehabilitation of 3-unit classroom block	Dabogni					24,995.01			D/A	D/A, DPs
		Const of 3-unit bedroom bungalow	Kumbungu SHS					54,455.00			D/A	D/A, DPs
		Rehabilitation of Veterinary staff bungalow	Kumbungu					39,950.50			D/A	D/A, DPs
		Supply of materials & construction of revenue container	Dalun						3,917.55		D/A	D/A, DPs
		Construction & furnishing of 2-unit nurses' quarters	Gbullung					75,002.00			D/A	D/A, DPs
		Rehabilitation of 4-unit nurses' quarters	Dalun					34,083.81			D/A	D/A, DPs
		Construction of 4-unit bungalow for Police Service	Kumbungu					61,131.11			D/A	D/A, DPs
		Installation of street lights	Kumbungu					48,736.00			D/A	D/A, DPs
		Ensure effective implementation of the Local Government Act	Strengthen existing sub-district structures to ensure effective	Construction of durbar grounds	Tibung					14,365.00		
Rehabilitation of Area Council Office	Voggu & Kasulyili							48,439.00			D/A	D/A, DPs



	responsible for coordinating planning at all levels and ensure their effective linkage with the budgetary process	Carry out Monitoring & Evaluation	Kumbungu					3,000.00		DACF	D/A	D/A, DPs
		Present Annual statement of accounts to the general assembly	Kumbungu						1,000.00			D/A
	Implement District Composite Budgeting	Preparation of annual budget	Kumbungu					1200.00			D/A	D/A, DPs
Facilitate equitable access to good quality and affordable social services	Increase the provision quality of social services	Procure office equipment and logistics	Kumbungu					50,000.00			D/A	D/A, DPs
		Procure 1No. 4x4 pickup for M&E	Kumbungu					60,000.00			D/A	D/A, DPs
		Procure 1No. Tipper Truck for D/A	Kumbungu					520,000.00			D/A	D/A, DPs
		Procure 1No. Grader for D/A	Kumbungu					720,000.00			D/A	D/A, DPs
		Renting of office accommodation for D/A	Kumbungu					20,000.00			D/A	D/A, DPs
		Furnish D/A offices	Kumbungu					15,000.00			D/A	D/A, DPs
		Documentation of land released to the assembly.	Kumbungu					10,000.00			D/A	D/A, DPs
		Procure office equipment and logistics	Kumbungu					12,000.00			D/A	D/A, DPs
		Maintenance of office building	Kumbungu					13,000.00			D/A	D/A, DPs

		Service official vehicles	Kumbungu					10,000.00			D/A	D/A, DPs
Ensure that energy is produced and utilized in an environmentally-sound manner	Promote the use of environmentally friendly energy supply sources such as renewable energy (solar, wind, waste) in the energy supply mix of the country	Provide solar lamps to communities without electricity	District-wide					40,000.00			D/A	D/A, DPs
Strengthen arms of government and independent government institutions	Build capacity of governance institutions and parliament to perform their respective mandates and functions	Support activities of Decentralized departments	Kumbungu					100,000.00			D/A	D/A, DPs
Increase the capacity of the legal system to ensure speedy and affordable access to justice for all	Empower traditional authorities and community legal literacy volunteers to assist in the resolution of minor disputes	Provide support to Traditional authorities	Kumbungu					50,000.00			D/A	D/A, DPs
		Provide support to community initiated programmes and project	Kumbungu					80,000.00			D/A	D/A, DPs

Enhance women's access to economic resources	Institute or intensify existing capacity building and mentoring programmes to ensure the elevation of female businesses to the small and medium scale level	Identify and sensitize women in horticulture	District-wide					3,000.00			DoCD	D/A, DPs
		Register and form association of women in horticulture	District-wide					2,000.00			DoCD	D/A, DPs
		Conduct training for women in horticulture-good agronomic practices, booking keeping, financial management and marketing	District-wide					4,000.00			DoCD	D/A, DPs
		Liaise with and create a network of these associations with others outside the district	District-wide							2,000.00	DoCD	D/A, DPs
		Train women on soap making and other employable skills	District-wide					7,000.00			DoCD	D/A, DPs
		Educate 10 women groups on climate change and design adaptation strategies	District-wide					1,200.00			DoCD	D/A, DPs
Empower women and mainstream gender into socio-economic development	Strengthen institutions dealing with women and children's issues	Sensitize communities on the right of children	District-wide						3,000.00	DoCD	D/A, DPs	
Strengthen institutions responsible for enforcement of	Launch public education programme on children's rights	Form community base child right committee to monitor child right protection	District-wide					2,000.00		DoCD	D/A, DPs	

children's right	and the dangers of child trafficking	Facilitate the formation of child panel in town/area councils to handle children issues	District-wide				2,500.00			DoCD	D/A, DPs
		Organize workshop for traditional authorities, opinion leaders, leadership of political parties and other identifiable groups on child right and protection	Kumbungu				3,000.00			DoCD	D/A, DPs
Facilitate equitable access to good quality and affordable social services	Increase the provision and quality of social services	Sensitize all communities on the plight of emigrants (Kaayaaye) in the town/cities in the south	District-wide				3,000.00			DoCD	D/A, DPs
		Organize workshop for traditional authorities, opinion leaders, CSOs, Assembly persons on the socio-economic effect of "Kaayaaye"	Kumbungu					4000.00		DoCD	D/A, DPs
		Sensitize mothers on good maternal and child health practices	District-wide				4,000.00			DoCD	D/A, DPs
		Design a system of identifying needy but brilliant pupil or student and offer appropriate assistance	District-wide				3,000.00			DoCD	D/A, DPs

# ANNUAL ACTION PLAN, 2014

THEMATIC AREA: ACCELERATED AGRICULTURAL MODERNIZATION AND SUSTAINABLE NATURAL RESOURCE MANAGEMENT

KEY FOCUS AREA: ACCELERATED MODERNIZATION OF AGRICULTURE

Objective	Strategy	Activities	Location	Time frame				Budget GHC			Implementing Agencies	
				Q1	Q2	Q3	Q4	GOG	IGF	DONOR	Lead	Collab
Improve agricultural productivity	Support production of certified seeds and improved planting materials for both staple and industrial crops	Build the capacities of 2500 farmers annually on appropriate technologies in cereals, legumes, roots and tubers productions	Kumbungu					10,000.00			D/A	MoFA
	Promote demand-driven research	Carry out demonstrations on improved technologies with farmers and other stakeholders	Kumbungu					28,988.00			D/A	MoFA
Reduce production and distribution risk/ bottlenecks in agriculture and industry	Improve allocation of resources to district for extension service delivery backed by enhanced efficiency and cost effectiveness	Contact farmers regularly through home and farm visits to diffuse agricultural bottlenecks	District-wide					40,050.00			D/A	MoFA
		Build the capacities of FBOs to support extension agents in extension delivery	District wide							110,000.00	D/A	MoFA/GY EEDA

Objective	Strategy	Activities	Location	Time frame				Budget GHC			Implementing Agencies	
				Q1	Q2	Q3	Q4	GOG	IGF	DONOR	Lead	Collab
Promote livestock and poultry dev't for food security	Develop effective post-harvest management strategies, particularly storage facilities, at individual and community levels	Build the capacities of farmers on post-harvest management of crops to reduce losses	District wide					3,000.00			D/A	MoFA
	Develop standards and promote good agricultural practices along the value chain (including hygiene, proper use of pesticides, grading, packaging, standardization )	Train 40 women farmer groups annually on food processing, nutrition, fortification, handling, home management and sanitation to ensure food safety and security	District wide							1,400.00	D/A	MoFA/DADU
		Organize and maintain agricultural value chain for staple food crops grown	District wide					1,600.00			D/A	MoFA/DADU
	Rehabilitate viable irrigation infrastructure	Rehabilitate 2 No. dams annually to facilitate dry season vegetable production in some communities	Limo Bontanga					1,400.00			D/A	MoFA/DADU
	Provide	Establish bench mark	District					3,000.00			D/A	MoFA/

Objective	Strategy	Activities	Location	Time frame				Budget GHC			Implementing Agencies	
				Q1	Q2	Q3	Q4	GOG	IGF	DONOR	Lead	Collab
	comprehensive support for improved access of operators to market information and intelligence	data on selected commodities (Crop yield sample survey, livestock census, commodity market prices)	wide									DADU
Competitiveness and enhance integration into domestic and international markets	Provide relevant technology, market infrastructure (cold chain), and financing to enable operators to respond to the changing needs of markets	Promote production of Export and Industrial crops	District wide					1,550.00			D/A	MoFA/ DADU
		Assist farmers to develop mango production as cash crops	District wide					4,000.00			D/A	MoFA/ DADU
Promote selected crop development for food security, export and industry	Support the development and introduction of climate resilient, high-yielding, disease and pest resistant,	Facilitate soya bean farmers to access SADA support for production	District wide					1,600.00			D/A	MoFA/ DADU
		Identify farmers and assist them to source								5,000.00	D/A	MoFA/ DADU

Objective	Strategy	Activities	Location	Time frame				Budget GHC			Implementing Agencies	
				Q1	Q2	Q3	Q4	GOG	IGF	DONOR	Lead	Collab
	short duration crop varieties taking into account consumer health and safety	SADA support for Butter Nut production for export										
	Revive the existing processing infrastructure in the cotton industry to support poverty reduction and improvement in the economies of the three northern regions	Collaborate with cotton companies to support cotton production in the district	District wide						3,000.00		D/A	MoFA/ DADU
Promote livestock and poultry development for food security and income	Strengthen research into large scale breeding and production of guinea fowls, cattle, sheep, and goats especially in the northern region	Assist farmers to source support from SADA to go into guinea fowl production	District wide							2,500.00	D/A	MoFA/ DADU
		Build the capacity of 200livestock farmers annually on improved animal housing and management	District wide							4,000.00	D/A	MoFA/ DADU

Objective	Strategy	Activities	Location	Time frame				Budget GHC			Implementing Agencies	
				Q1	Q2	Q3	Q4	GOG	IGF	DONOR	Lead	Collab
	Intensify disease control and surveillance especially for zoonotic and scheduled diseases	Carry out animal disease surveillance control and prophylactic treatment of sick animals	District wide						2,000.00		D/A	MoFA/ DADU
		Vaccinate livestock and poultry against schedule diseases (CBPP, PPR, Anthrax, NCD) regularly	District wide						2,500.00		D/A	MoFA/ DADU
Improve institutional coordination for agriculture development	Strengthening Stakeholder Collaboration	Organize stakeholder review meetings quarterly	Kumbungu						2,000.00		D/A	MoFA/ DADU
		Organize orientation courses for staff to enhance effective service delivery and coordination	District wide							3,000.00	D/A	MoFA/ DADU
		Constitute collaborative M&E team with stakeholders to supervise and monitor interventions	Kumbungu							3,000.00	D/A	MoFA/ DADU

Objective	Strategy	Activities	Location	Time frame				Budget GHC			Implementing Agencies	
				Q1	Q2	Q3	Q4	GOG	IGF	DONOR	Lead	Collab
		executed in the district every month										
		Organize joint planning sessions with development partners annually	Kumbungu						2,000.00		D/A	MoFA/ DADU
		Refurbish DADU office complex	Kumbungu					6,000.00			D/A	MoFA/ DADU
		Equip DADU office with computers/accessories, steel cabinets, air conditioners, photocopiers, LCD projector and Digital camera	Kumbungu					5,000.00			D/A	MoFA/ DADU
		Procure 1 No pick up and 12 motor-bikes to facilitate field trekking	Kumbungu					150,000.00	do		D/A	MoFA/ DADU
Institute appropriate regulatory framework and economic incentives for effective coastal resource management	Implement regulations and fines for illegal mining, indiscriminate bush burning, mangrove and wetlands degradation, sand and	Build the capacity of farmers on appropriate land tillage practices and other conservative practices	District wide						1,000.00		D/A	MoFA/ DADU
		Train farmers and agro-chemical dealers on handling	District wide						1,200.00		D/A	MoFA/ DADU

Objective	Strategy	Activities	Location	Time frame				Budget GHC			Implementing Agencies	
				Q1	Q2	Q3	Q4	GOG	IGF	DONOR	Lead	Collab
	gravel mining	and correct use of agro-chemicals annually										
Reduce production and distribution risk/ bottlenecks in agriculture and industry	Rehabilitate viable agricultural infrastructure	Organize 2 field days in each zone annually for farmers to show case performance of implementing interventions	District wide						1,000.00		D/A	MoFA/ DADU
	Provide support to project and establishment which support the youth in agriculture Programme	Youth organized and supported to engage in block farming	District wide							1,500.00	D/A	MoFA/ DADU
Mitigate and reduce natural disasters and reduce risks and vulnerability	Increase capacity of NADMO to deal with the impact of natural disasters	Enhancing professional competence of staff of NADMO in disaster Management through structural training programme at all levels	District wide							2,000.00	D/A	MoFA/ DADU
	Introduce education programmes to create public	Undertake public education on early warning system	District wide						2,000.00		D/A	MoFA/ DADU

Objective	Strategy	Activities	Location	Time frame				Budget GHC			Implementing Agencies	
				Q1	Q2	Q3	Q4	GOG	IGF	DONOR	Lead	Collab
	awareness											
	Equip the key seismological monitoring stations in Ghana	Carry out effective monitoring and evaluation mechanisms	District wide								D/A	MoFA/ DADU
	Invest in early warning and response systems	Establish emergency response team to undertake prevention, emergency response and recovery activities	District wide							2,000.00	D/A	MoFA/ DADU
		Formation and re-activation of DVGS	District wide						1,200.00		D/A	MoFA/ DADU
		Formation of district disaster management committee	Kumbungu						1,000.00			
	Reduce impacts of natural disasters on natural resources using a multi-sectoral approach	Undertake tree planting exercises	District wide					5,000.00			D/A	MoFA/ DADU

**THEMATIC AREA: ENHANCE COMPETIVENESS IN GHANA'S PRIVATE SECTOR**

**FOCUS AREA: PRIVATE SECTOR DEVELOPMENT**

Objective	Strategy	Activities	Location	Time frame				Budget GHC			Implementing Agencies	
				Q1	Q2	Q3	Q4	GOG	IGF	DONOR	Lead	Collab
Improve efficiency and competitiveness of MSEs	Provide training and business development services	Provide Counseling services to groups engaged in economic activities.	District wide							3,000.00	BAC	D/A
	Enhance access to affordable credit	Organize Business Orientation seminars.	District wide							50,003.00	BAC	D/A
		Organize stakeholder's forum.	District wide							1,500.00	BAC	D/A
		Provide Technical Training in soap making to women groups	District wide							11,005.50	BAC	D/A
		Provide training and development.	District wide							4,000.00	BAC	D/A
		Facilitate access to credit facilities by groups.	District wide						2,000.00	BAC	D/A	
Ensure the health, safety	Promote the adoption of	Provide training in health and safety	District wide							2,000.00	BAC	D/A

and economic interest of consumers	codes of good business ethics in achieving the objectives of the cooperation's	management.										
Ensure rapid industrialization driven by strong linkages to agriculture and other natural resource management	<ul style="list-style-type: none"> <li>✓ Pursue spatial and geographic industrialization</li> <li>✓ Improve access to land</li> <li>✓ Promote public-private partnerships</li> </ul>	Establish light industrial area	Kumbungu				2,000.00			BAC	D/A	
		Construct feeder roads to facilitate economic activities.	District-wide				100,000.00			BAC	D/A	
		Facilitate the production of butter nut squash.	District wide					3,000.00		BAC	D/A	

**THEMATIC AREA: HUMA DEVELOPMENT, PRODUCTIVITY AND EMPLOYMENT**

**FOCUS AREA: EDUCATION AND HEALTH**

Objective	Strategy	Activities	Location	Time frame				Budget GHC			Implementing Agencies	
				Q1	Q2	Q3	Q4	GOG	IGF	DONOR	Lead	Collab
Improve quality of teaching and learning	Expand incentive schemes for increased	Organize quizzes for Junior High Schools	District-wide					25,000.00			GES	D/A, DPs

Objective	Strategy	Activities	Location	Time frame				Budget GHC			Implementing Agencies	
				Q1	Q2	Q3	Q4	GOG	IGF	DONOR	Lead	Collab
Increase equitable access to and participation in education at all levels  Bridge gender gap in access to education	enrolment, retention and completion for girls particularly in deprived areas	Organize remedial classes and mock examination for final year pupils in J.H.S.	District-wide					20,000.00			GES	D/A, DPs
		Provide incentive packages for children in remote areas.									GES	D/A, DPs
		Support to district education and oversight committee		District-wide							3,000.00	
		Provide sponsorships to teacher trainees and be bounded to serve in the district.	District-wide					6,000.00			GES	D/A, DPs
		Organize in-service training for teachers in the district.	District wide					5,000.00			GES	D/A, DPs
	Establish Basic schools in all underserved	Construction of 12No. 3Unit	District wide					2,000.00			GES	D/A, DPs

Objective	Strategy	Activities	Location	Time frame				Budget GHC			Implementing Agencies	
				Q1	Q2	Q3	Q4	GOG	IGF	DONOR	Lead	Collab
	communities	Classroom blocks.										
		Construct 6No. quarters for CSs	All area council					12,500.00			GES	D/A, DPs
		Provide classroom furniture to schools.	All area council					1,500.00			GES	D/A, DPs
		Intensify monitoring and supervision.	Singa							23,000.00	GES	D/A, DPs
		Rehabilitation of 2No. Storm damaged 3Unit classroom buildings	Jakpahi								GES	D/A, DPs
		Build capacities of Parents Teachers Association (P.T.A) and School Management Committees (SMEs) annually	District-wide					5,000.00			GES	D/A, DPs
Bridge the equity gaps in access to health care and nutrition services and	Accelerate implementation of CHPS strategy in under-served areas	Construction of 6No. CHPs compound	District-wide					500,000.00			MOH, GHS, D/A,	DPs & NGOS
		Renovation of 4No. CHPs compound	Gizaa Gundaa , Kpulliyini							300,000.00	MOH, GHS,	DPs & NGOS

Objective	Strategy	Activities	Location	Time frame				Budget GHC			Implementing Agencies	
				Q1	Q2	Q3	Q4	GOG	IGF	DONOR	Lead	Collab
ensure sustainable financial arrangements that protect the poor	Expand access to primary health care		and Singa								D/A,	
		Procure 2No. Vehicles and 12No. Motor bikes to enhance better service delivery.	District-wide					160,000.00			MOH, GHS, D/A,	DPs & NGOS
		Construction of 1No Medical Laboratory	Kumbungu					1,200,000			MOH, GHS, D/A,	DPs & NGOS
		Construction of 1No Health Insurance Office complex	Kumbungu							100,000.00	MOH, GHS, D/A,	DPs & NGOS
		Construction of office accommodation to health staff.	Kumbungu					200,000.00			MOH, GHS, D/A,	DPs & NGOS
		Construction of residential accommodation to health staff	Kumbungu					300,000.00			MOH, GHS, D/A,	DPs & NGOS
		Provide sponsorship packages to health	District-wide						100,000.00	MOH, GHS,	DPs & NGOS	

Objective	Strategy	Activities	Location	Time frame				Budget GHC			Implementing Agencies	
				Q1	Q2	Q3	Q4	GOG	IGF	DONOR	Lead	Collab
		trainees and bound them to serve in the district.									D/A,	
		Conduct in-house re-training for all staff on the activities of DoCD and DSW	Kumbungu						3,000.00		DoCD & DSW	D/A, DPs
		To sensitize JHS pupils on the dangers or HIV/AIDS and teenage pregnancy district-wide	District-wide					4,000.00			DoCD & DSW	D/A, DPs
Empower women and mainstream gender into socio-economic development	Develop and implement affirmative policy action for women	Formation and animation of 5women's groups for income Generation activities in each area council	District-wide					5,000.00			DoCD & DSW	D/A, DPs
Ensure co-ordinated	Mainstream youth	Sensitization of youth groups	District-						3,000.00		DoCD &	D/A, DPs

Objective	Strategy	Activities	Location	Time frame				Budget GHC			Implementing Agencies	
				Q1	Q2	Q3	Q4	GOG	IGF	DONOR	Lead	Collab
implementation of new youth policy	development issues into national development policy frameworks at all levels	through mass education on the relevance of acquiring vocational and technical skills training	wide								DSW	
Ensure a more effective appreciation of and inclusion of disability issues, both within the formal decision making process and in the society at large	Promote continuous collection of data on PWDs	Registration of PWDs in all the Area Councils	District-wide							2,000.00	DoCD & DSW	D/A, DPs
	Promote universal access to infrastructure	Register all PWDS under the NHIS	District-wide					3,000.00			DoCD & DSW	D/A, DPs
		To sensitise the executives of CPTs in 13 communities on the CPT work and community ownership of the activity.	District-wide					2000.00			DoCD & DSW	D/A, DPs

Objective	Strategy	Activities	Location	Time frame				Budget GHC			Implementing Agencies	
				Q1	Q2	Q3	Q4	GOG	IGF	DONOR	Lead	Collab
		To secure minimum standards for the operations of Day care centres through regular inspection	District-wide					1,000.00			DoCD & DSW	D/A, DPs
Promote effective child development in all communities, especially deprived areas	Mainstream children's issues in development planning at all levels	Sensitization of communities on the need to protect the rights of children	District-wide					2,000.00			DoCD & DSW	D/A, DPs
Develop targeted social interventions for vulnerable and marginalized groups	Make the rural environment more attractive and reduce rural-urban migration	To sensitize 30 communities on the dangers of kayayo through drama/discussion	District-wide					50,000.00			DoCD & DSW	D/A, DPs
	Empower rural populations by reducing structural poverty, exclusion and	To identify current LEAP beneficiaries and register qualified LEAP beneficiaries in all	District-wide							2,000.00	DoCD & DSW	D/A, DPs

Objective	Strategy	Activities	Location	Time frame				Budget GHC			Implementing Agencies	
				Q1	Q2	Q3	Q4	GOG	IGF	DONOR	Lead	Collab
	vulnerability	the Area councils										
		Carry out monitoring of Leap beneficiaries in the district	District-wide					2,000.00				DoCD & DSW
		Conduct regular follow-up monitoring of all activities in the dist.	District-wide							3,000.00	DoCD & DSW	D/A, DPs
		Acquisition of life jackets from NADMO through the Regional Coordinator	Singa					120,000.00			DoCD & DSW	D/A, DPs
		Support to district response initiatives	District-wide					100,000.00			DoCD & DSW	D/A, DPs

**THEMATIC AREA: INFRASTRUCTURE AND HUMAN SETTLEMENT DEVELOPMENT**

**FOCUS AREA: WATER, ENVIRONMENTAL SANITATION AND HYGIENE**

Objective	Strategy	Activities	Location	Time frame				Budget GHC			Implementing Agencies	
				Q1	Q2	Q3	Q4	GOG	IGF	DONOR	Lead	Collab
Ensure efficient management of water resources	Set up mechanisms and measures to support, encourage and promote rainwater harvesting  Improve data collection for water resources assessment and decision-making  Promote climate change adaptation in water resources management	Carry out sensitization on water and sanitation issues	District-wide					7,05.00			EHD	D/A, DPs
		Hold Consultative meetings with local authorities. E.g. chiefs, opinion leaders, religious leaders, youth groups, etc.	District-wide					75,500.00			EHD	D/A, DPs
Strengthening the implementation of nutrition and	Nutrition and Malaria Control fully implemented	Carry out monthly clean-up exercises (first Saturday of every month).	District-wide					12,000.00			EHD	D/A, DPs

Objective	Strategy	Activities	Location	Time frame				Budget GHC			Implementing Agencies	
				Q1	Q2	Q3	Q4	GOG	IGF	DONOR	Lead	Collab
malaria control												
		Provision of 3No. Tricycles for each electoral area.	All electoral areas					48,002.00			EHD	D/A, DPs
Effective collaboration with partners improved upon for service delivery	Collaboration with partners improved upon	Procurement of 2No. refuse containers for each electoral areas	All electoral areas					35,035.00			EHD	D/A, DPs
Increase family planning acceptor rate	Improve awareness of family planning methods	Enact bye-laws on the construction of household toilets.	District wide						11,500.00		EHD	D/A, DPs
Promote community integrated management of childhood illness	Improve and expand CBA services	Mapping of all sanitation points.	District-wide					20,000.00			EHD	D/A, DPs
Promote Domiciliary midwifery	Domiciliary midwifery promoted	The Assembly should convert funds for construction of toilets into materials for household toilet construction.	District-wide					8,600.00			EHD	D/A, DPs

Objective	Strategy	Activities	Location	Time frame				Budget GHC			Implementing Agencies	
				Q1	Q2	Q3	Q4	GOG	IGF	DONOR	Lead	Collab
Strengthen management practices	Twelve (12) DHMT meetings held	Formation of water and sanitation management teams in all electoral areas.	District-wide						6,000.00		EHD	D/A, DPs
		Enact Policy on rain water harvesting.	District-wide					2,000.00			EHD	D/A, DPs
		Construct 5No. institutional latrines	Singa & Kumbungu					300,000.00			EHD	D/A, DPs
		Construct small town water systems	Singa Voggu					120,000.00			EHD	D/A, DPs
		Rehabilitation of 3No boreholes	Voggu, Voggu Kushibo and Kuli					90,000.00			EHD	D/A, DPs
		Extension of water pipe lines to deprived communities	Cheshegu, All Deprived communities					250,000.00			EHD	D/A, DPs

Objective	Strategy	Activities	Location	Time frame				Budget GHC			Implementing Agencies	
				Q1	Q2	Q3	Q4	GOG	IGF	DONOR	Lead	Collab
		Procure sanitary tools	Kumbungu					40,000.00		DACF/G oG	EHD	D/A, DPs
		Evacuate all public refuse dumps	District-wide					50,000.00			EHD	D/A, DPs
		Carry out mechanical and manual dislodgement of all public toilets	District-wide					90,000.00			EHD	D/A, DPs
		Monthly clean up exercise in Six (6) Area councils	District-wide					6,000.00			EHD	D/A, DPs
		Sanitization and screening of food vendors	District-wide						2,000.00		EHD	D/A, DPs
		Hold two days public fora on food and personally hygiene	Kumbungu							2,500.00	EHD	D/A, DPs
		Carry out monitoring activities in ODF communities	District-wide							4,000.00	EHD	D/A, DPs

Objective	Strategy	Activities	Location	Time frame				Budget GHC			Implementing Agencies	
				Q1	Q2	Q3	Q4	GOG	IGF	DONOR	Lead	Collab
		Hold monthly Radio discussion program on CLTS	Dalun							3,000.00	EHD	D/A, DPs
		Carry out monthly fumigation at designated communities	District-wide					4,000.00			EHD	D/A, DPs
		Procure 1 No. desktop and laptop computer each and its accessories	Kumbungu					120,000.00			EHD	D/A, DPs
		Review existing bye-laws and ensure their enforcement with support from other institutions	District-wide					1,000.00			EHD	D/A, DPs
		Fence all cemeteries and equip them with working tools, logistics and staff	District-wide					150,000.00			EHD	D/A, DPs
		Review training on ESCICOM and CLTS for	Kumbungu					1,000.00			EHD	D/A, DPs

Objective	Strategy	Activities	Location	Time frame				Budget GHC			Implementing Agencies	
				Q1	Q2	Q3	Q4	GOG	IGF	DONOR	Lead	Collab
		environmental health staff										
		Sensitization of women and youth groups on CLTS and environmental sanitation	District-wide					800.00			EHD	D/A, DPs
		Training of 100 community based hygiene volunteers on construction of soak away pit	District-wide					1,200.00			EHD	D/A, DPs

**THEMATIC AREA: TRANSPARENT AND ACCOUNTABLE GOVERNANCE**

**FOCUS AREA: DEEPENING THE PRACTICE OF DEMOCRACY AND INSTITUTIONAL REFORM**

Objective	Strategy	Activities	Location	Time frame				Budget GHC			Implementing Agencies	
				Q1	Q2	Q3	Q4	GOG	IGF	DONOR	Lead	Collab
Strengthen arms of government and independent	Ensure equitable distribution of resources to achieve relative	Rehabilitation of 6-unit classroom block	District wide					10,000.00		DACF	D/A	GES

Objective	Strategy	Activities	Location	Time frame				Budget GHC			Implementing Agencies	
				Q1	Q2	Q3	Q4	GOG	IGF	DONOR	Lead	Collab
governance institutions	resource parity											
		Rehabilitation of 3-unit classroom block	Zangbalung					24,500.50		DACF	D/A	GES
		Construction of 3-unit bedroom bungalow	Dabogni					25,603.00			D/A	GES
		Rehabilitation of Veterinary staff bungalow	Kumbungu					80,000.00			D/A	MoFA
		Supply of materials & construction of revenue container	Dalun						80,000.00 Per project.		D/A	GES
		Construction & furnishing of 2-unit nurses' quarters	Gbullung					10,560.50			D/A	GES
		Rehabilitation of 4-unit nurses' quarters	Dalun					12,100.00			D/A	DD HRM

Objective	Strategy	Activities	Location	Time frame				Budget GHC			Implementing Agencies	
				Q1	Q2	Q3	Q4	GOG	IGF	DONOR	Lead	Collab
		Construction of 4-unit bungalow for Police Service	Kumbungu					7,300.00			D/A	D/A/UNICEF
		Installation of street lights	Kumbungu					23,400.00			D/A	DD HRM
Ensure effective implementation of the Local Government Act	Strengthen existing sub-district structures to ensure effective operations	Construction of durbar grounds	Tibung					15,300.00			D/A	DD HRM
Integrate and institutionalize district level planning and budgeting through participatory process at all levels		Rehabilitation of Area Council Office	Gbullung & Zangballung					3,000.00			D/A	GES
		Rehabilitation of Area Council Office & 10-seater KVIP	Kumbungu					7,200.00			D/A	A&F,DD
		Supply of materials & construction of durbar grounds	Voggu					50,000.00			D/A	ACs
		Implementation of the school feeding programme	District-wide					100,000.00			DoCD	D/A, DPs

Objective	Strategy	Activities	Location	Time frame				Budget GHC			Implementing Agencies	
				Q1	Q2	Q3	Q4	GOG	IGF	DONOR	Lead	Collab
		Rehab of Health Centre & Area Council Office	Dalun & Gupanarigu					70,000.00			DoCD	D/A, DPs
		Construction of 2No Residential Accommodation	Kumbungu					200,000.00			DoCD	D/A, DPs
	Institutionalize regular meet-the-citizens session for all assembly members	Organize General Assembly meetings	Kumbungu					10,000.00			DoCD	D/A, DPs
		Hold all statutory meetings	Kumbungu					9,000.00			DoCD	D/A, DPs
	Strengthen the capacity of MMDAs for accountable, effective performance and service delivery	Organize capacity building training for staff and assembly members	Kumbungu					5,000.00			DoCD	D/A, DPs
		Organize stakeholder meetings	Kumbungu					9,000.0			DoCD	D/A, DPs
		Prepare MTDP 2014-2017	Kumbungu					30,000.00			DoCD	D/A, DPs

Objective	Strategy	Activities	Location	Time frame				Budget GHC			Implementing Agencies	
				Q1	Q2	Q3	Q4	GOG	IGF	DONOR	Lead	Collab
		Support to Human Resource Management & Development in the Assembly	Kumbungu					5,000.00			DoCD	D/A, DPs
	Strengthen institutions responsible for coordinating planning at all levels and ensure their effective linkage with the budgetary process	Develop M and E plan	Kumbungu						2,000.00		DoCD	D/A, DPs
		Carry out Monitoring & Evaluation	Kumbungu							5,000.00	DoCD	D/A, DPs
		Present Annual statement of accounts to the general assembly	Kumbungu					1,000.00			DoCD	D/A, DPs
		Establishment of Revenue Database Management System and Revenue Mobilisation strategies/activities	Kumbungu						2,000.00		DoCD	D/A, DPs
	Implement District Composite	Preparation of annual budget	Kumbungu					3,000.00			DoCD	D/A, DPs

Objective	Strategy	Activities	Location	Time frame				Budget GHC			Implementing Agencies	
				Q1	Q2	Q3	Q4	GOG	IGF	DONOR	Lead	Collab
	Budgeting											
		Implementation of Street Naming exercise	District-wide					250,000.00			DoCD	D/A, DPs
Facilitate equitable access to good quality and affordable social services	Increase the provision quality of social services	Construction of 20 lockable Market Stalls	Kumbungu							400,000.00	DoCD	D/A, DPs
		Procure office equipment and logistics	Kumbungu					100,000.00			DoCD	D/A, DPs
		Procure 1No. 4x4 pickup for M&E	Kumbungu					80,000.00			DoCD	D/A, DPs
		Procure 1No. Tipper Truck for D/A	Kumbungu					400,000.00			DoCD	D/A, DPs
		Procure 1No. Grader for D/A	Kumbungu					520,000.00			DoCD	D/A, DPs
		Renting of office accommodation for	Kumbungu					20,000.00			DoCD	D/A, DPs

Objective	Strategy	Activities	Location	Time frame				Budget GHC			Implementing Agencies	
				Q1	Q2	Q3	Q4	GOG	IGF	DONOR	Lead	Collab
		D/A										
		Furnish D/A offices	Kumbungu					15,000.00			DoCD	D/A, DPs
		Documentation of land released to the assembly.	Kumbungu					10,000.00			DoCD	D/A, DPs
		Procure office equipment and logistics	Kumbungu					15,000.00			DoCD	D/A, DPs
		Maintenance of office building	Kumbungu					20,000.00			DoCD	D/A, DPs
		Service official vehicles	Kumbungu					20,000.00			DoCD	D/A, DPs
Ensure that energy is produced and utilized in an environmentally-sound manner	Promote the use of environmentally friendly energy supply sources such as renewable energy (solar, wind, waste) in the energy	Provide solar lamps to communities without electricity	District-wide					40,000.00			DoCD	D/A, DPs

Objective	Strategy	Activities	Location	Time frame				Budget GHC			Implementing Agencies	
				Q1	Q2	Q3	Q4	GOG	IGF	DONOR	Lead	Collab
	supply mix of the country											
Strengthen arms of government and independent government institutions	Build capacity of governance institutions and parliament to perform their respective mandates and functions	Support activities of Decentralized departments	Kumbungu					30,000.00			DoCD	D/A, DPs
Increase the capacity of the legal system to ensure speedy and affordable access to justice for all	Empower traditional authorities and community legal literacy volunteers to assist in the resolution of minor disputes	Provide support to community initiated programmes and project	Kumbungu					30,000.00			DoCD	D/A, DPs
		Provide support to Traditional authorities	Kumbungu					20,000.00			DoCD	D/A, DPs
Increase the capacity of the legal system to ensure speedy	Empower traditional authorities and community legal	Identify and sensitize women in horticulture	District-wide							1,200.00	DoCD	D/A, DPs

Objective	Strategy	Activities	Location	Time frame				Budget GHC			Implementing Agencies	
				Q1	Q2	Q3	Q4	GOG	IGF	DONOR	Lead	Collab
and affordable access to justice for all	literacy volunteers to assist in the resolution of minor disputes											
		Register and form association of women in horticulture	District-wide					2,000.00			DoCD	D/A, DPs
		Conduct training for women in horticulture-good agronomic practices, booking keeping, financial management and marketing	District-wide					3,000.00			DoCD	D/A, DPs
		Liaise with and create a network of these associations with others outside the district	District-wide					1,000.00			DoCD	D/A, DPs
		Train women on soap making and other employable	District-wide							7,000.00	DoCD	D/A, DPs

Objective	Strategy	Activities	Location	Time frame				Budget GHC			Implementing Agencies	
				Q1	Q2	Q3	Q4	GOG	IGF	DONOR	Lead	Collab
		skills										
		Educate 10 women groups on climate change and design adaptation strategies	District-wide							2,000.00	DoCD	D/A, DPs
Empower women and mainstream gender into socio-economic development	Strengthen institutions dealing with women and children's issues	Sensitize communities on the right of children	District-wide							3,000.00	DoCD	D/A, DPs
Strengthen institutions responsible for enforcement of children's right	Launch public education programme on children's rights and the dangers of child trafficking	Form community base child right committee to monitor child right protection	District-wide							2,000.00	DoCD	D/A, DPs
		Facilitate the formation of child panel in town/area councils to handle children issues	District-wide							1,000.00	DoCD	D/A, DPs

Objective	Strategy	Activities	Location	Time frame				Budget GHC			Implementing Agencies	
				Q1	Q2	Q3	Q4	GOG	IGF	DONOR	Lead	Collab
		Organize workshop for traditional authorities, opinion leaders, leadership of political parties and other identifiable groups on child right and protection	Kumbungu					2,000.00			DoCD	D/A, DPs
Facilitate equitable access to good quality and affordable social services	Increase the provision and quality of social services	Sensitize all communities on the plight of emigrants (Kaayaaye) in the town/cities in the south	District-wide							5,000.00	DoCD	D/A, DPs
		Organize workshop for traditional authorities, opinion leaders, CSOs, Assembly persons on the socio-economic effect of "Kaayaaye"	Kumbungu					5,000.00			DoCD	D/A, DPs
		Sensitize mothers on good maternal and child health	District-wide					6,000.00			DoCD	D/A, DPs

Objective	Strategy	Activities	Location	Time frame				Budget GHC			Implementing Agencies		
				Q1	Q2	Q3	Q4	GOG	IGF	DONOR	Lead	Collab	
		practices											
		Design a system of identifying needy but brilliant pupil or student and offer appropriate assistance	District-wide					2,000.00				DoCD	D/A, DPs

## ANNUAL ACTION PLAN FOR 2015

### THEMATIC AREA: ACCELERATED AGRICULTURAL MODERNIZATION AND SUSTAINABLE NATURAL RESOURCE MANAGEMENT

Objective	Strategy	Activities	Location	Time frame				Budget GHC			Implementing Agencies	
				Q1	Q2	Q3	Q4	GOG	IGF	DONOR	Lead	Collab
Improve agricultural productivity		Establish bench mark data on selected commodities (Crop yield sample survey, livestock census)	District wide						3,000.00		D/A	MoFA/GYE EDA
Promote livestock and poultry development for food security and income	Enhance performance of indigenous breeds of livestock/poultry	Sensitize farmers on breed selection/inbreeding livestock production	District wide					3,000.00			D/A	MoFA/DADU
	Intensify disease control and surveillance especially for zoonotic and scheduled diseases	Vaccinate livestock and poultry against schedule diseases (CBPP, PPR, Anthrax, NCD) regularly	District wide					5,000.00			D/A	MoFA/DADU
Increase agricultural competitiveness and enhance integration into domestic and international markets	Develop standards and promote good agricultural practices along the value chain	Support soya bean farmers to engage in large scale production	District wide					6,000.00			D/A	MoFA/DADU
	Promote Public-Private Partnerships (PPPs) in the	Support MoFA to identify farmers and link them to KASMED to produce Butter nut	District wide					3,000.00			D/A	MoFA/DADU

Objective	Strategy	Activities	Location	Time frame				Budget GHC			Implementing Agencies	
				Q1	Q2	Q3	Q4	GOG	IGF	DONOR	Lead	Collab
	Agricultural sector	for export										
		Provide office equipment for the DADU	Kumbungu					10,000.00			D/A	MoFA/DADU
		Procure 3 No. motor bikes to facilitate field work	Kumbungu					10,000.00			D/A	MoFA/DADU
Institute appropriate regulatory framework and economic incentives for effective coastal resource management	Implement regulations and fines for illegal mining, indiscriminate bush burning, mangrove and wetlands degradation, sand and gravel mining	Sensitize farmers on indiscriminate bush burning and other land degradation practices annually	District wide					5,000.00			D/A	MoFA/DADU
		Build capacity of farmers on appropriate land tillage and other practices	District wide					4,000.00			D/A	MoFA/DADU
		Facilitate the establishment of woodlots in each zone	District wide					2,000.00			D/A	MoFA/DADU
Reduce production and distribution risk/bottlenecks in agriculture and industry	Provide support to projects and establishments which support Youth in Agriculture Programme	Youth organized and supported to engage in block farming	District wide							7,000.00	MOFA	MoFA/DADU/REP
Mitigate and reduce natural	Increase capacity of NADMO to	Formation and training of fire fighters	Kumbungu					3,000.00			D/A	NADMO

Objective	Strategy	Activities	Location	Time frame				Budget GHC			Implementing Agencies	
				Q1	Q2	Q3	Q4	GOG	IGF	DONOR	Lead	Collab
disasters and reduce risks and vulnerability	deal with the impact of natural disasters											
		Support district disaster management plan	district wide					2,000.00			D/A	NADMO
	Introduce education programmes to create public awareness	Undertake public education on early warning systems	District wide					2,000.00			D/A	NADMO
	Invest in early warning and response systems	Institute emergency response team to undertake prevention, emergency response and recovery activities	District wide					3,000.00			D/A	NADMO

THEMATIC AREA: ENHANCE COMPETIVENESS IN GHANA'S PRIVATE SECTOR

Objective	Strategy	Activities	Location	Time frame				Budget GHC			Implementing Agencies	
				Q1	Q2	Q3	Q4	GOG	IGF	DONOR	Lead	Collab
Improve efficiency and competitiveness of MSMEs	Provide training and business development services	Provide quarterly counselling services to MSMEs	District wide					2,000.00			BAC	D/A
		Organize Business Orientation seminars.	District wide					3,000.00			BAC	D/A
	Enhance access to affordable credit facilities	Facilitate MSMEs access to credit facilities	District wide					4,000.00				
Promote livestock and poultry dev't for food security and income	Support large scale breeding and production of guinea fowls, cattle, sheep, and goats	Assist farmers to source support for guinea fowl production	District wide					2,000.00			D/A	REP/BAC
		Build the capacity of livestock farmers on improved animal housing and management	District wide					4,000.00			D/A	REP/BAC
Ensure the health, safety and economic interest of consumers	Formulate consumer protection policy and enact	Formulate a district policy and bye-laws on consumer protection	Kumbungu					3,000.00				

	comprehensive consumer protection law	Provide training in health and safety management for MSMEs	District wide					3,000.00			D/A	BAC
Ensure rapid industrialization driven by strong linkages to agriculture and other natural resource management	Pursue spatial and geographic industrialization	Construction of lorry park and market stalls	Kumbungu					30,000.00			D/A	D/A
		Construct/Reshape feeder roads to facilitate economic activities.	Tibung-Kulli District-wide					200,000.00			D/A	D/A

### THEMATIC AREA: HUMAN DEVELOPMENT, PRODUCTIVITY AND EMPLOYMENT

Objective	Strategy	Activities	Location	Time frame				Budget GHC			Implementing Agencies	
				Q1	Q2	Q3	Q4	GOG	IGF	DONOR	Lead	Collab
Improve quality of teaching and learning	Provide distance learning opportunities for serving teachers	Provide incentive packages for teachers who stay in hard to reach areas	District-wide							25,000.00	GES	D/A, DPs
	Provide enabling environment for effective teaching & learning	Provide classroom infrastructure to schools	District-wide					3,000.00			GES	D/A, DPs

Objective	Strategy	Activities	Location	Time frame				Budget GHC			Implementing Agencies	
				Q1	Q2	Q3	Q4	GOG	IGF	DONOR	Lead	Collab
		Provide water and sanitation facilities in basic schools										
		Provide accommodation for teachers in deprived communities	District-wide Singa					100,000 120,000			GES	D/A, DPs
Develop and retain human resource capacity at national, regional and district levels	Provide adequate resources and incentives for human resources capacity development	Provide sponsorships to teacher trainees willing to serve in the district	District-wide							40,000	GES	D/A, DPs
		Organise in-service training for teachers in the district	District-wide						5,000.00		GES	D/A, DPs
Bridge the equity gaps in access to health care and nutrition services and ensure sustainable financial arrangements that protect the poor	Accelerate implementation of CHPS strategy in under-served areas	Construction of 2No. CHPs compound	Tibung Singa					160,000.00			MOH, GHS, D/A,	DPs & NGOS
		Renovate dilapidated CHPs compound	GizaaGundaa , Kpulnying and Singa					100,000.00			GHS, D/A, KVC	DPs & NGOS

Objective	Strategy	Activities	Location	Time frame				Budget GHC			Implementing Agencies	
				Q1	Q2	Q3	Q4	GOG	IGF	DONOR	Lead	Collab
	Scale up NHIS registration of the very poor through strengthening linkages with other MDAs, MESW	Renovate 1 No. building for NHIS	Bontanga					100,000.00			MOH, GHS, D/A,	DPs & NGOS
	Expand access to primary health care	Procure 3No. Motor bikes to enhance better service delivery.	Kumbungu					10,000			MOH, GHS, D/A,	DPs & NGOS
		Hold National Immunization Day	District-wide					5,000.00			MOH, GHS, D/A,	DPs & NGOS
		Upgrade 1No Health Centre to District Hospital	Kumbungu					1,200,000			MOH, GHS, D/A,	DPs & NGOS
		Construct nutrition centre for in-patients	Kumbungu						200,000	MOH, GHS, D/A,	DPs & NGOS	
Ensure the reduction of new HIV and AIDs/STIs/TB transmission	Intensify advocacy to reduce infection and impact of HIV, AIDS and TB	Sensitization of JHS pupils on the dangers or HIV/AIDS and teenage pregnancy	District-wide					4,000.00			DoCD& DSW	D/A, DPs

Objective	Strategy	Activities	Location	Time frame				Budget GHC			Implementing Agencies	
				Q1	Q 2	Q 3	Q4	GOG	IGF	DONOR	Lead	Collab
		district-wide										
Empower women and mainstream gender into socio-economic development	Develop district affirmative policy action for women	Implement activities in District Affirmative Action Plan	District-wide					40,000			DoCD& DSW	D/A, BAC

### THEMATIC AREA: INFRASTRUCTURE AND HUMAN SETTLEMENT DEVELOPMENT

Objective	Strategy	Activities	Location	Time frame				Budget GHC			Implementing Agencies	
				Q1	Q 2	Q 3	Q4	GOG	IGF	DONOR	Lead	Collab
Ensure the development and implementation of health education as a component of all water and sanitation programmes	Incorporate hygiene education in all water and sanitation delivery programmes	Carry out quarterly clean-up exercises in all communities and set up an award system	District-wide					12,000.0 0			EHD	D/A, DPs
	Promote hygienic use of water at household level	Construct small town water systems	Singa							90,000.0 0	EHD	D/A, DPs

Objective	Strategy	Activities	Location	Time frame				Budget GHC			Implementing Agencies	
				Q1	Q2	Q3	Q4	GOG	IGF	DONOR	Lead	Collab
Adopt a sector-wide approach to water and environmental sanitation delivery to ensure effective sector coordination	Develop and implement a Strategic Sector Development Plan (SSDP)	Enact bye-laws on sanitation	District wide					11,500.00			EHD	D/A, DPs
Accelerate the provision and improve environmental sanitation	Accelerate CLTS activities for the promotion of household sanitation	Support CLTS field operations to reach total ODF	District wide					120,000			EHD	D/A, DPs
		Dislodge existing public toilets in the district	District-wide					18,000.00			EHD	D/A, DPs
		Construct latrines for public institutions, eg schools, health facilities etc	Singa 4 SHS 4 H/ Centre 2							325,000	EHD	D/A, DPs
	Accelerate the construction of HH toilets	Create revolving fund for construction of household toilets	District-wide					100,000			BAC	D/A, DPs

## THEMATIC AREA: TRANSPARENT AND ACCOUNTABLE GOVERNANCE

Objective	Strategy	Activities	Location	Time frame				Budget GHC			Implementing Agencies	
				Q1	Q2	Q3	Q4	GOG	IGF	DONOR	Lead	Collab
Improve the capacity of security agencies to provide internal security for human safety and protection	Improve institutional capacity of the security agencies, including the police, immigration service, prisons and narcotic control board	Construction of a district police station						40000			D/A	SS
Foster civic advocacy to nurture the culture of rights and responsibilities	Strengthen interaction between assembly members and citizens	Organise general and committee meetings of assembly	Dalun					12,100.00			D/A	DD HRM
Promote social accountability in the public policy cycle	Promote participatory budgeting, expenditure tracking and M/E across sectors and district	Carry out monitoring and evaluation of all projects and programmes	Kumbungu					7,200			D/A	DPCU
Integrate and institutionalise district level planning and budgeting through participatory processes at all levels	Strengthen institutions responsible for coordinating planning at all levels and ensure	Preparation of 2016 Annual Action Plan and Budget	Kumbungu					60,000			D/A	DPCU

Objective	Strategy	Activities	Location	Time frame				Budget GHC			Implementing Agencies	
				Q1	Q2	Q3	Q4	GOG	IGF	DONOR	Lead	Collab
	their effective linkage with the budgeting process											
	Strengthen the capacity of MMDAs for accountable, effective performance and service delivery	Procure office equipment and logistics	Kumbungu					50,000			DA	D/A, DPs
		Procure 1No. pickup for M&E	Kumbungu					88,000.00			DA	D/A, DPs
		Commence payment for grader	Kumbungu					150,000			DA	D/A, DPs
		Office and residential accommodation for DA	Kumbungu					30,000			DA	D/A, DPs
		Construction of office annex for DA	Kumbungu					200,000			DA	D/A, DPs
		Documentation of land released to the Assembly	Kumbungu						10,000.00		DA	D/A, DPs
		Maintenance of office building and vehicles	Kumbungu					20,000.00			DA	D/A, DPs

Objective	Strategy	Activities	Location	Time frame				Budget GHC			Implementing Agencies	
				Q1	Q2	Q3	Q4	GOG	IGF	DONOR	Lead	Collab
		Strengthen human capital in the decentralised framework	Kumbungu					6,000.00			DA	D/A, DPs
		Hold all statutory meetings	Kumbungu					9,000.00			DA	D/A, DPs
Strengthen arms of government and independent government institutions	Build capacity of governance institutions to perform their respective mandates and functions	Support activities of Decentralized departments	Kumbungu					60,000			DA	D/A, DPs
		Provide office facilities for Births & Deaths, NCCE, CHRAJ and EC	Kumbungu					95,000			Works Dept	DA, DPs
Increase the capacity of the legal system to ensure speedy and affordable access to justice for all	Empower traditional authorities and community legal literacy volunteers to assist in the resolution of minor disputes	Establish and support community legal literacy committees	District wide					10,000			DCD& SW	D/A, DPs
		Provide support to Traditional authorities	Kumbungu					10,000			DA	D/A, DPs
		Organize interface meetings between D/A & Traditional Authorities	Kumbungu Dalun					10,000			DA	DPs

## **CHAPTER SIX**

### **6.0 MONITORING AND EVALUATION**

#### **6.1.1 MONITORING DEVELOPMENT PROGRAMMES/PROJECTS.**

It is exceedingly imperative to put in place measures to keep track of the implementation and supervision of the entire plan. This ensures that activities are implemented on time or according to schedule and with the required level of efficiency. It is in light of the above mentioned that Monitoring and Evaluation of this plan is very vital.

Generally, monitoring has the following objectives:

- Promote co-ordination and balance in service provision and utilization.
- Motivate as well as strengthen the capacity of the various actors such as government departments/agencies, NGO's, CSO's, FBO's and the private sector in the collection and utilization of data to ensure better service delivery.
- To ascertain whether or not activities are truck and take corrective measures where possible.
- Identify successful interventions for replication in other areas of the district.
- Obtain periodic data for further planning.

#### **6.1.2 MONITORING OF PHYSICAL PROJECTS.**

The Assembly's monitoring team: made up of DPC and other stakeholders shall be in charge of monitoring the execution of all physical projects. The team is made up of:

- The District Coordinating Director.
- The District Planning Officer.
- The District Engineer/Feeder Roads Engineer.
- The District Budget Officer.
- The District Gender Desk Officer.
- The District Finance Officer.
- The A/D Planning (GES) in the case of educational projects.
- The District Director of Health Services in the case of health projects.
- The Chairperson of the Works Sub-Committee of the Assembly.
- Representatives of beneficiary communities. The community representatives shall be made up of the Assemblyman (if he is resident in the community), the unit committee chairman and the chief's representative.

Since monitoring aims at assessing progress of work and filling the gaps rather than fault finding mission, the exercise would be undertaken with the active involvement of various actors.

Apart from the district level monitoring, there shall be monitoring from the Regional and National.

At the Regional Level, the Regional Coordinating Council as part of its mandate will undertake regular monitoring of on-going activities in the district.

At the National level, the district has started enjoying some donor supports being a new district for the implementation of most of its programmes.

A quarterly monitoring mission to the district would be undertaken by a Team made up of members from the Ministry of Finance, Ministry of Local Government and the Donor Organizations.

## **6.2 REVIEW OF THE PLAN**

Apart from the periodic monitoring there shall be reviews of Annual Work Plans at mid-year and annual. This is to ascertain:

- The progress made in the implementation of the year's work plan and budget.
- Status of implementation of programmes, projects and activities.
- The extent of accomplishment of indicators in the plan and budget.
- Outstanding activities and their continued relevance to area and district development.
- Identify programmes, projects that can be rolled over to the succeeding year.

## **6.3 EVALUATION OF DEVELOPMENT PROGRAMMES**

A mid-term evaluation of the plan will be carried out at the end of 2015 and the results and recommendations discussed at a stakeholder workshop.

This is expected to ensure that the output/inputs achieved are in line with the goal and objectives of the District Assembly and for that matter the goal of the Ghana Shared Growth and Development Agenda.

Some indicators for the evaluation will include:

- The number of beneficiaries.
- Gender disaggregation of beneficiaries
- The achievement of project objectives or target.
- Accessibility of output to beneficiaries.

## **CHAPTER SEVEN**

### **7.0 COMMUNICATION STRATEGY.**

Data on this development Agenda shall be circulated from the district level to the National level.

#### **7.1.1 District Level**

- All decentralized developments.
- All Sub structures (Town and Area Council)
- Other key stakeholders such as active NGO's working in the district

#### **7.1.2 Regional Level**

- Regional Coordinating Council and the Regional Planning and Coordinating Unit
- Regional Secretariats of all donors Programmes and Projects such as:
- Community Water and Sanitation Agency (CWSA)
- SPRING
- UNICEF
- Savannah Accelerated Development Authority (SADA)

#### **7.1.3 NATIONAL LEVEL**

- National Development Planning Commission (NDPC)
- Ministry of Local Government and Rural Development
- Donor Agencies- UNICEF

### **7.2 Reports of the Plan Monitoring/Progress Report**

In every quarter of the year, the monitoring team puts together a report on the progress of implementation of activities. The report shall be circulated to stakeholders at the District, Regional and National levels.

#### **7.2.1 At the District Level**

The District Chief Executive (As the political head of the District and the main implementer of the government of the day's Development Agenda)

#### **7.2.2 Regional Level**

- The Regional Coordinating Council through the Regional Planning and Coordinating Unit.
- Project Financiers

### **7.2.3 National Level**

- The National Development Planning Commission
- The Ministry of Local Government and Rural Development
- Project Financiers / Donor Partners

1.1 Review of Performance involving all stakeholders at the district and Regional Levels –End of year, Mid –Term and End of Plan Period.

APPENDIX

PROJECT PICTURES

STRATEGIC ENVIRONMENT ASSESSMENT PLAN

MONITORING AND EVALUATION PLAN

COMMUNICATION PLAN

**COMPILED BY:**

THE DISTRICT PLANNING AND COORDINATING UNIT (DPCU)