



# GHANA SHARED GROWTH AND DEVELOPMENT AGENDA (GSGDA) II, 2014-2017

## RESULTS FRAMEWORK

**VOLUME III:**  
RESULTS ARCHITECTURE AND KEY PERFORMANCE INDICATORS (KPIs)

DECEMBER, 2015  
NATIONAL DEVELOPMENT PLANNING COMMISSION (NDPC)

# **GHANA SHARED GROWTH AND DEVELOPMENT AGENDA (GSGDA) II, 2014-2017**

## **RESULTS FRAMEWORK**

**VOLUME III:**  
**RESULTS ARCHITECTURE AND  
KEY PERFORMANCE INDICATORS**

**DECEMBER 2015  
NATIONAL DEVELOPMENT PLANNING COMMISSION  
(NDPC)**



# TABLE OF CONTENTS

1. INTRODUCTION.....	1
2. LISTS OF ACRONYMS .....	2
3. ENSURING AND SUSTAINING MACROECONOMIC STABILITY.....	6
4. ENHANCING THE COMPETITIVENESS OF GHANA’S PRIVATE SECTOR .....	13
5. ACCELERATED MODERNISATION OF AGRICULTURE AND NATURAL RESOURCE MANAGEMENT.....	20
6. OIL AND GAS DEVELOPMENT.....	41
7. INFRASTRUCTURE AND HUMAN SETTLEMENTS DEVELOPMENT.....	46
8. HUMAN DEVELOPMENT, PRODUCTIVITY AND EMPLOYMENT .....	58
9. TRANSPARENT, RESPONSIVE AND ACCOUNTABLE GOVERNANCE .....	73
10. PRIORITY PERFORMANCE INDICATORS FOR THE PRESIDENT’S TRANSFORMATION AGENDA .....	95

# LISTS OF ACRONYMS

ADR	Alternative Dispute Resolution
AESD	Architectural and Engineering Services Department
AGI	Association of Ghana Industries
AGOA	African Growth and Opportunity Act
APR	Annual Progress Report
BECE	Basic Education Certificate Examination
BoG	Bank of Ghana
CAGD	Controller and Accountant-General's Department
CONIWAS	Coalition of NGOs in Water and Sanitation
COTVET	Committee/ Council for Technical and Vocational Education and Training
CSIR	Council for Scientific and Industrial Research
CSPG	Cross-Sectoral Planning Group
CWSA	Community Water and Sanitation Agency
DACF	District Assemblies Common Fund
DAES	Directorate of Agricultural Extension Services
DMBs	Deposit money banks
DFR	Department of Feeder Roads
DOVVSU	Domestic Violence and Victim Support Unit
DUR	Department of Urban Roads
DVLA	Driver and Vehicle Licensing Authority
ECOWAS	Economic Community of West African States
EA	Environmental Assessment
EC	Energy Commission
ECG	Electricity Company of Ghana
EHSD	Environmental Health and Sanitation Directorate
EMP	Environmental Management Plan
EOCO	Economic and Organised Crime Office
EPA	Economic Partnership Agreement
EU	European Union
FBO	Farmer-based organisation

FC	Forestry Commission
FSD	Forest Services Division
GAC	Ghana AIDS Commission
GAEC	Ghana Atomic Energy Commission
GAF	Ghana Armed Forces
GDHS	Ghana Demographic and Health Survey
GEA	Ghana Employers' Association
GEPA	Ghana Export Promotion Authority
GES	Ghana Education Service
GGEI	Global Green Economy index
GHA	Ghana Highways Authority
GHAMFIN	Ghana Micro Finance Institution Network
GHEITI	Ghana Extractive Industries Transparency Initiative
GIDA	Ghana Irrigation Development Authority
GIFMIS	Ghana Integrated Financial Management Information System
GIPC	Ghana Investment Promotion Centre
GIS	Ghana Immigration Service
GLC	Ghana Labour Commission
GLSS	Ghana Living Standards Survey
GNGC	Ghana National Gas Company
GNPC	Ghana National Petroleum Corporation
GPS	Ghana Police Service
GRA	Ghana Revenue Authority
GRIDCO	Ghana Grid Company Ltd
GSE	Ghana Stock Exchange
GSS	Ghana Statistical Service
GTA	Ghana Tourist Authority
GWCL	Ghana Water Company Ltd
IPAC	Inter-Party Advisory Committee
LEAP	Livelihood Empowerment Against Poverty
MASLOC	Microfinance and Small Loans Centre
MDAs	Ministries, Departments and Agencies
MESTI	Ministry of Environment, Science, Technology and Innovation

MESW	Ministry of Employment and Social Welfare
MFARI	Ministry of Foreign Affairs and Regional Integration
MICS	Multiple Indicator Cluster Survey
MINT	Ministry of Interior
MLGRD	Ministry of Local Government and Rural Development
MLNR	Ministry of Lands and Natural Resources
MMDA	Metropolitan, Municipal and District Assemblies
MoC	Ministry of Communications
MoCTA	Ministry of Chieftaincy and Traditional Affairs
MoD	Ministry of Defence
MoE	Ministry of Education
MoELR	Ministry of Employment and Labour Relations
MoF	Ministry of Finance
MoFA	Ministry of Food and Agriculture
MoGCSP	Ministry of Gender, Children and Social Protection
Mol	Ministry of Information
MoJ	Ministry of Justice
MoP	Ministry of Power
MoPe	Ministry of Petroleum
MoT	Ministry of Transport
MoTI	Ministry of Trade and Industry
MoYS	Ministry of Youth and Sports
MRH	Ministry of Roads and Highways
MSMEs	Micro, small and medium enterprises
MOTCCA	Ministry of Tourism, Culture and Creative Arts
MWRWH	Ministry of Water Resources, Works and Housing
NACOB	Narcotics Control Board
NACP	National AIDS Control Programme
NADMO	National Disaster Management Organisation
NBSSI	National Board for Small-Scale Industries
NCA	National Communications Authority
NCTE	National Council on Tertiary Education
NDPC	National Development Planning Commission

NEDCO	Northern Electricity Distribution Company
NEF	National Economic Forum
NHIA	National Health Insurance Authority
NHIS	National Health Insurance Scheme
NITA	National Information Technology Agency
NPC	National Population Council
NTE	Non-Traditional Exports
NVTI	National Vocational Training Institute
OHCS	Office of the Head of the Civil Service
PIAC	Public Interest and Accountability Committee
PLHIV	People living with HIV/AIDS
PMTCT	Prevention of mother-to-child transmission
PSD	Private Sector Development
PURC	Public Utilities Regulatory Commission
RADUs	Regional Agriculture Development Units
RELCs	Research Extension Farmer Linkages Committees
RIPS	Regional Institute for Population Studies
RTIU	Rice and Tubers Improvement Unit
SEC	Securities and Exchange Commission
SRID	Statistics, Research and Information Directorate
TCPD	Town and Country Planning Department
TICo	Takoradi International Company
TUC	Trades Union Congress
TVET	Technical Vocational Education and Training
UNCRPD	United Nations Convention on the Rights of Persons with Disability
WDI	World Development Indicators
WRC	Water Resources Commission
YEA	Youth Employment Agency
YES	Youth Enterprise Support Fund

## 1.1 INTRODUCTION

The Ghana Shared Growth and Development Agenda (GSGDA) II, 2014-2017 is the fifth in the series of medium-term national development policy frameworks to be prepared under the Fourth Republic and a successor to GSGDA I, 2010-2013. GSGDA II is in three volumes, namely: (i) Policy Framework (Volume I), (ii) Costing Framework (Volume II), and (iii) Results Framework (Volume III). Volume I contains the specific strategic interventions to be implemented to systematically achieve the overall medium-term development aspirations of the country, while Volume II outlines the resources required for effective implementation of the policies and strategies outlined in the policy framework. This document, which is Volume III, outlines the results architecture and identifies the key performance indicators to be monitored.

Overall, the GSGDA II policy framework contains 1,136 strategic interventions to be implemented. They are organised under 219 policy objectives, 72 focus areas and 7 thematic areas (Table 1.1).

**Table 1.1: Summary of Strategic Interventions under GSGDA II**

Thematic Area	No. of Key Focus Areas	No. of Issues to be addressed	No. of Policy Objectives	No. of Strategic Interventions
1.Ensuring and Sustaining Macroeconomic Stability	4	15	10	40
2.Enhancing Competitiveness of Ghana’s Private Sector	6	47	12	71
3. Accelerated Agricultural Modernisation and Sustainable Natural Resource Management	17	164	37	249
4. Oil and Gas Development	5	19	8	31
5. Infrastructure and Human Settlements Development	13	152	47	269
6.Human Development, Productivity and Employment	13	93	52	218
7.Transparent and Accountable Governance	14	158	53	258
<b>Total</b>	<b>72</b>	<b>665</b>	<b>219</b>	<b>1136</b>

The Thematic Areas are as follows:

- Ensuring and sustaining macroeconomic stability;
- Enhanced competitiveness of Ghana's private sector;
- Accelerated agricultural modernisation and natural resource management;
- Oil and gas development;
- Infrastructure and human settlements development;
- Human development, employment and productivity; and
- Transparent and accountable governance.

## **1.2 THE PROCESSES FOR DEVELOPING THE RESULTS FRAMEWORK**

The systems approach to monitoring the implementation of GSGDA II consists of periodic or continuous assessment of performance based on selected performance indicators, as well as evaluation and thematic studies to understand the intended and unintended consequences of policy interventions. The key activities include:

- Annual monitoring of progress towards implementation;
- Conduct of participatory monitoring and evaluation;
- Conduct of thematic studies (i.e. Poverty and Social Impact Assessments (PSIAs)); and
- Conduct of evaluation.

The results framework therefore provides the basis for these assessments of performance, especially for the preparation of the Annual Progress Report (APR), which is the main instrument for reporting on the implementation of the GSGDA II on annual basis. The development of the results framework entails two main processes, namely: (i) technical exercises, and (ii) stakeholder consultation.

The development of the results matrix with agreed indicators, baselines and targets entails converting the 219 policy objectives identified in the main policy framework into outcomes, and selecting indicators that will help track progress towards the attainment of these outcomes. These indicators are subsequently discussed with stakeholders with a view to agreeing on the relevant indicators for each outcome (Box 1.1).

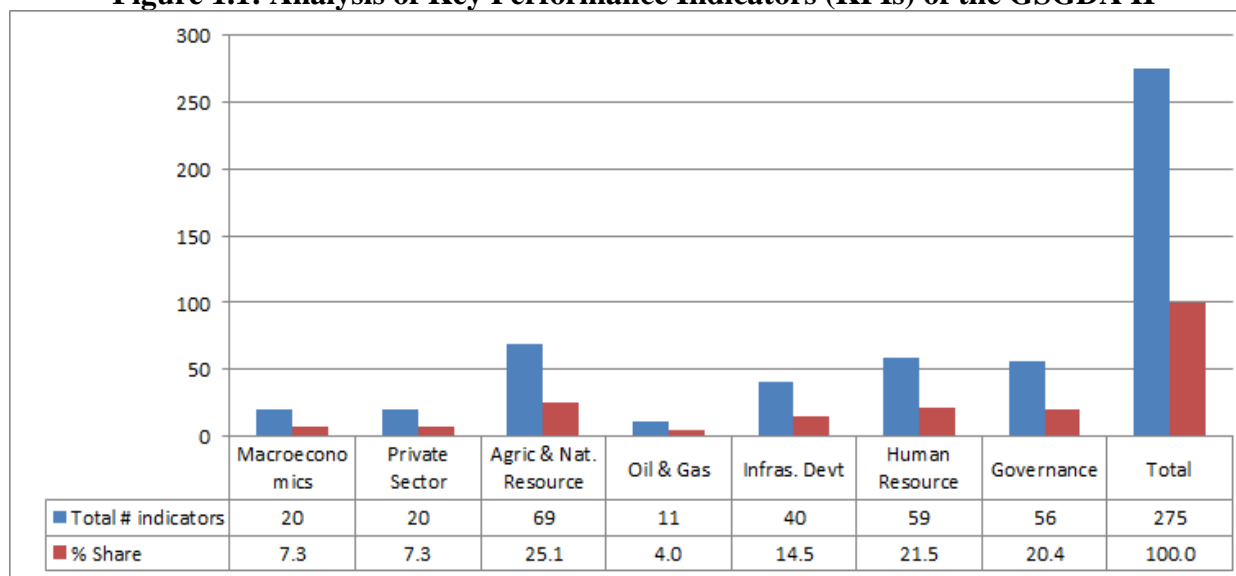
### **Box 1.1: Stages in Developing the Results Framework**

Following the finalisation of the main policy framework, the development of the results framework begins with:

- Recruitment of seven technical experts with experience in development results to guide the preparation of the results framework for GSGDA II and the associated performance indicators for tracking progress of implementation of GSGDA II and the President's transformation agenda;
- Organisation of a meeting of experts to peer review the existing results architecture for GSGDA I with the view to making recommendations for improvement;
- Organisation of two retreats with technical experts to review the draft results framework prepared and the proposed performance indicators to ensure that they are strategic and catalytic;
- Organisation of stakeholder meeting with MDAs, CSOs, Private Sector, Academia, and Think Tanks to review the draft results framework developed and the proposed performance indicators, as well as initiate process towards collection of baseline data and agree on target for the indicators;
- Organisation of in-house meeting with the Delivery Unit, Office of the President, to review the draft theory of change report and associated performance indicators for tracking progress towards the President's transformation agenda; and
- Organisation of final validation meeting with MDAs, CSOs, Private Sector, Academia, and Think Tanks on the revised results framework and the associated performance indicators, baselines and targets.

In total 275 performance indicators have been identified for tracking progress of implementation of the GSGDA II (Figure 1.1). Nearly 67% of these indicators are allocated to the Agriculture and Natural Resources (25.1%), Human Resource (21.5%), and Governance (20.4%) thematic areas. Also, 14.5% of the indicators are input indicators, 40.0% output indicators, 40.7% outcome indicators, and 4.7% impact indicators (Table 1.2).

**Figure 1.1: Analysis of Key Performance Indicators (KPIs) of the GSGDA II**



**Table 1.2: Typology of Performance Indicators (KPIs)**

Thematic Area	Total # indicators	% Share	Typology of Indicators			
			Input	Output	Outcome	Impact
Macroeconomics	20	7.3	4	0	15	1
Private Sector	20	7.3	1	5	14	0
Agric & Nat. Resource	69	25.1	6	37	26	0
Oil & Gas	11	4.0	1	6	4	0
Infras. Devt	40	14.5	4	13	14	9
Human Resource	59	21.5	7	30	22	0
Governance	56	20.4	17	19	17	3
<b>Total</b>	<b>275</b>	<b>100.0</b>	<b>40</b>	<b>110</b>	<b>112</b>	<b>13</b>

### **1.3 STRUCTURE OF THE DOCUMENT**

This document has three sections. After this introductory section, Section Two presents the key performance indicators with their respective typologies, rationale for selection, data sources, frequency of collecting data on the indicators, level of their disaggregation, baseline and targets. Section Three presents the theory of change underlying the President's transformation agenda and the associated priority indicators.

# 1

## **ENSURING AND SUSTAINING MACROECONOMIC STABILITY**

# 1. ENSURING AND SUSTAINING MACROECONOMIC STABILITY

## 1.1 SUMMARY PERFORMANCE INDICATORS AND THEIR DEFINITIONS

Policy Objective	Indicator	Type of Indicator	Definition of Indicator	Rationale	Source	Frequency	Disaggregation
<b>FOCUS AREA 1: MONETARY POLICY AND FINANCIAL MANAGEMENT</b>							
1. Ensure price and exchange rate stability	1. Inflation rate (year-on-year)	Outcome	The rate at which the general level of prices rises over a 12-month period	Measures the stability of general level of prices	Ghana Statistical Service (GSS)	Monthly/ Annual	National/ Regional
	2. Percentage change in exchange rate	Outcome	Change in the exchange rate of the Ghana cedi relative to a specified currency, expressed as a percentage at the beginning of the period	Provides an indication of whether or not the local currency is losing value or otherwise against others	Bank of Ghana (BoG)	Annual	National
	3. Interest rate (91-day T-Bills)	Outcome	The interest rate on government borrowing	A measure of short-term interest, which provides an indication of the cost of borrowing by government from the public and the financial institutions	BoG	Annual	National
	4. Official international reserves	Input	The number of months of imports that can be covered by the foreign exchange reserves and assets (such as gold) held by the Bank of Ghana in reserve currencies.	Serves as a buffer that allows the central bank to sell or purchase the domestic currency, in order to bring about stability in the exchange rate	BoG	Monthly	National
2. Deepen the capital market	1. Market capitalisation	Outcome	The total market value of shares outstanding of publicly traded companies (i.e. the sum of the product of share prices and the number of shares outstanding of listed publicly traded companies)	Gives an indication of the extent to which long-term capital is being mobilised for investment and the performance of the stock market	MoF/FSD; SEC; GSE	Annual	National

Policy Objective	Indicator	Type of Indicator	Definition of Indicator	Rationale	Source	Frequency	Disaggregation
3. Improve access to financial services	1. Lending rate	Outcome	The average rate at which commercial banks lend money to the public	Provides an indication of the cost of borrowing from the deposit money banks (DMB) by the private sector	BoG	Annual	National
	2. Volume of credit to the private sector	Outcome	The amount of credit to the private sector expressed as a percentage of total loans and advances by the DMBs	Measures the extent to which bank credit is accessible to the private sector relative to government access.	BoG	Annual	Sectors
<b>FOCUS AREA 2: FISCAL POLICY MANAGEMENT</b>							
1. Improve fiscal resource mobilisation and management	1. Domestic revenue as a percentage of GDP	Outcome	The total revenue mobilized (excluding grants) through domestic taxes and non-tax sources in the year expressed as a percentage of GDP	Measures the country's ability to mobilise domestic resources for development	MoF/GRA	Annual	National, tax and non-tax revenue
2. Improve public expenditure management	1. Wage bill as a percentage of tax revenue	Impact	The total amount of budgetary resources spent on paying the wages of government employees expressed as a percentage of total tax revenue	Provides an indication of how the government is effectively and sustainably managing the public wage bill, and ultimately creating fiscal space for public investments	MoF/CAGD	Annual	National
	2. Budget deficit as a share of GDP	Outcome	The difference between expenditure and revenue as a percentage of GDP	Measures level of fiscal restraint and discipline, and ultimately improvement in public expenditure management	MoF/CAGD	Annual	National
	3. The number of MDAs and MMDAs on GIFMIS platform	Input	Total number of MDAs and MMDAs that use GIFMIS to process GOG, IGF and donor fund transactions	Assesses the level of budget control and transparency in budget management	MoF/CAGD	Annual	National/District
	4. Proportion of expenditure allocated to growth-inducing	Outcome	Capital expenditure expressed as a percentage of total government expenditure	Measures changes in fiscal space for growth-enhancing public investments such as roads, energy, water	MoF	Annual	National

Policy Objective	Indicator	Type of Indicator	Definition of Indicator	Rationale	Source	Frequency	Disaggregation
	programmes						
3. Improve capacity for effective public sector debt management	1. Total public debt as a percentage of GDP	Outcome	Total debt stock expressed as a percentage of GDP	Indicates whether or not the public debt burden is at sustainable levels	MoF	Annual	National/ domestic and external
	2. Debt- service ratio	Outcome	Total debt service expressed as a percentage of total domestic revenue	Measures the country's ability to honour its debt obligations and indicates sustainability of the debt level	MoF	Annual	National/ domestic debt service-to-domestic revenue and external debt service-to-exports ratio
<b>FOCUS AREA 3: ECONOMIC POLICY MANAGEMENT</b>							
1. Strengthen economic planning and forecasting to ensure synergetic development of strategic sectors	1 Percentage of budget targets achieved.	Input	The number of key macroeconomic targets in the Budget achieved, expressed as a percentage of total targets	Measures the country's ability to predict/forecast economic indicators effectively, and ultimately improve credibility of government economic policy making	Government (NDPC/MoF)/ Research Institutions	Annual	National
<b>FOCUS AREA 4: INTERNATIONAL TRADE MANAGEMENT AND ECOWAS COMMUNITY DEVELOPMENT</b>							
1. Improve trade competitiveness	1.External trade cost: - No. of documents required to export/import - Time in days to export and to complete clearance procedures of imports - Average cost to export and import (cost = US\$ per	Outcome	The cost of import/export in terms of time, number of documents required and monetary cost of Customs clearance and inspection, inland transport and handling, and port and terminal handling associated with exporting and importing a standardized cargo of goods by sea port	Measure of changes in export and import competitiveness and trade facilitation	GEPA/MOTI	Annual	National

Policy Objective	Indicator	Type of Indicator	Definition of Indicator	Rationale	Source	Frequency	Disaggregation
	container)						
2. Diversify and increase exports	1. Trade balance (US\$ millions)	Outcome	The difference between the total value of merchandise imports and merchandise exports	Measures the country's ability to service its imports and support its currency	BoG	Annual	National
	2. Growth in total merchandise exports (in US\$ millions)	Outcome	Percentage change in total merchandise exported from the country	Measures Ghana's participation in global trade	BoG	Annual	By commodities, country of destination
3. Accelerate economic integration with other regional and/or sub-regional states	1. Regional (ECOWAS) trade as a percentage of total trade	Outcome	Total amount of trade engaged in by the country within the ECOWAS sub-region as a percentage of total trade	Measures the extent of access to regional markets as well as market diversification	BoG/MOTI	Annual	Regional countries
	2. Percentage change in exports to and imports from the EU and the USA	Outcome	The total value of exports to and imports from the EU and the USA	Provides an indication of Ghana's ability to take full advantage of the Economic Partnership Agreement (EPA) with the EU and the AGOA of the USA	BoG/MOTI	Annual	Export /imports and commodity type

## 1.2 PERFORMANCE INDICATORS WITH BASELINE AND TARGETS

Indicator	Type of Indicator	Definition of Indicator	Baseline data (2013)	TARGETS			
				2014	2015	2016	2017
<b>FOCUS AREA 1: MONETARY POLICY AND FINANCIAL MANAGEMENT</b>							
1. Inflation rate (year-on-year)	Outcome	The rate at which the general level of prices rises over a 12-month period	10.1%	9.5%	11%	10%	8%
2. Percentage change in exchange rate	Outcome	The change in the exchange rate of the Ghana cedi to a specified currency, expressed as a percentage at the beginning of the period	14.5%	3.5%	10.7%	6.0%	4.0%
3. Interest rate (91- day T-Bills)	Outcome	The interest rate on government borrowing	18.8% (91-day T-bill)	20%	20%	NA	NA
4. Official international reserves	Input	The number of months of imports that can be covered by the foreign exchange reserves and assets (such as gold) held by the Bank of Ghana in reserve currencies.	US\$4,587 million 2.9 months of import cover	>3 months of import cover	US\$4,734 million (3.1 months of import cover)	US\$5,822 million (3.5 months of import cover)	US\$7,544 million (4.2 months of import cover)
5. Market capitalisation	Outcome	The total market value of the shares outstanding of publicly traded companies (i.e. the sum of the product of the share prices and the number of shares outstanding of listed publicly traded companies)	GH¢61,158.29 million	GH¢64,352.42 million	NA	NA	NA
6. Lending rate	Outcome	The average lending rate at which commercial banks lend money to the public.	26% (lending)	25%	NA	NA	NA
7. Volume of credit to the private sector: (i) As % of total (ii) As % of GDP	Outcome	The volume of credit to the private sector expressed as a percentage of the total loans and advances made by the DMBs	40.73% (16.5%)	42.0% (19.6%)	NA (20.4%)	NA NA	NA NA
<b>FOCUS AREA 2: FISCAL POLICY MANAGEMENT</b>							
1. Domestic revenue as a percentage of GDP	Outcome	The total revenue mobilized (excluding grants) through domestic taxes and non-tax sources in the year expressed as a percentage of GDP	16%	23.6%	19.8%	18.4%	19.1%
2. Wage bill as a percentage of tax revenue	Impact	The total amount of budgetary resources spent on paying the wages of government employees expressed as a percentage of total tax revenue	65.2%	44%	46.1%	43.9%	39.9%
3. Budget deficit as a percentage of GDP	Outcome	The difference between expenditure and revenue as a percentage of GDP	10.10%	8.5%	7.5%	5.1%	3.5%
4. The number of MDAs and MMDAs on GIFMIS platform	Input	Total number of MDAs (including district and regional offices) and MMDAs that use GIFMIS to process GoG, IGF and donor funds transactions	MDAs – 241 MMDAs – 7	MDAs 402 MMDAs 7	MDAs 403 MMDAs	MDAs 403 MMDAs	MDAs 403 MMDAs

Indicator	Type of Indicator	Definition of Indicator	Baseline data (2013)	TARGETS			
				2014	2015	2016	2017
					7	216	216
5. Proportion of expenditure allocated to growth-inducing programmes	Outcome	Capital expenditure expressed as a percentage of total government expenditure	16.9% (4.5%)	16.4% (5.7%)	18.7% (5.2%)	19.7% (4.9%)	18.9% (4.5%)
6. Total public debt as % of GDP	Outcome	Total debt stock expressed as a percentage of GDP	55.1% Dom: 31.7% Ext: 23.3%	60.0% 28.8% 31.2%	69.6% 33.2% 36.4%	67.5% 31.1% 36.4%	62.6% 27.8% 34.8%
7. Debt-service ratio	Outcome	Total debt service expressed as a percentage of total domestic revenue	% of Tot Rev: 28.9% As % GDP: (4.6%) Dom: 24.9% Ext: 4.0%	24.8% (5.9%) 20.9% 3.9%	35.7% (7.1%) 30.1% 5.6%	33.1% (6.1%) 26.1% 7.0%	29.1% (5.6%) 22.0% 7.1%
<b>FOCUS AREA 3: ECONOMIC POLICY MANAGEMENT</b>							
1. The percentage of budget targets achieved	Output	The number of key macroeconomic targets in the Budget achieved, expressed as a percentage of total targets	NA	80%	90%	95%	95%
<b>FOCUS AREA 4: INTERNATIONAL TRADE MANAGEMENT AND ECOWAS COMMUNITY DEVELOPMENT</b>							
1. External trade cost: - No. of documents required to export/import - Time in days to export and to complete clearance procedures of import - Average cost to export and import) cost = (US\$/container)	Outcome	The cost of import/export in terms of time, number of documents required and monetary cost of Customs clearance and inspection, inland transport and handling, and port and terminal handling associated with exporting and importing a standardized cargo of goods by sea port	6 19 US\$875	6 19 US\$875	5 18 US\$800	5 15 US\$750	3 10 US\$600
2. Trade balance (US\$ millions)	Outcome	The difference between the total value of merchandise imports and merchandise exports	-3,848 (7.9%)	-1,383	-2,767	-2,743.4	-1,616.6
3. Growth in total merchandise exports (US\$ millions)	Outcome	Percentage change in total merchandise exported from the country	US\$13,752 mn	US\$13,216.8 mn	US\$12,621.6 mn	US\$12,990.8 mn	US\$15,277.5 mn
4. Regional (ECOWAS) trade as a percentage of total trade	Outcome	Total amount of trade engaged in by the country within the ECOWAS sub-region as a percentage of total trade	9.748% (US\$1,340.8mn)	10.171%	NA	NA	NA
5. Percentage change in exports to and imports from the EU and the USA	Outcome	The total value of exports and imports from the EU and the USA	EU share of exports: 45.6% (US\$6,059.82 mn; % chg =2.2%) EU share of imports: 26% (US\$5,885.57 mn.; % chg =1.7%)	NA	NA	NA	NA

# 2

## **ENHANCING COMPETITIVENESS IN GHANA'S PRIVATE SECTOR**

## 2.0 ENHANCING COMPETITIVENESS IN GHANA'S PRIVATE SECTOR

### 2.1 SUMMARY PERFORMANCE INDICATORS AND THEIR DEFINITIONS

Policy Objective	Indicator	Type of Indicator	Definition of Indicator	Rationale	Source	Frequency	Disaggregation
<b>FOCUS AREA 1: PRIVATE SECTOR DEVELOPMENT</b>							
1. Improve private sector competitiveness domestically and globally	1. Doing Business rank	Outcome	The Ease of Doing Business is the index calculated as the ranking on the simple average of a country's percentile rankings on each of the 10 topics covered (starting a business; dealing with licenses; hiring and firing workers; registering property; getting credit; protecting investors; paying taxes; trading across borders; enforcing contracts; and closing a business).	Determines the conduciveness of regulatory environment to starting and operating in selected urban centres.	World Bank	Annual	National
	2. Business Competitiveness Index	Output	The Business Competitiveness Index (BCI) focuses on the underlying microeconomic factors which determine the economy's current sustainable levels of productivity and competitiveness. It specifically measures the sophistication of company operations and strategy, as well as the quality of the overarching national business environment in which they operate.	Determines firm-level capacity and competence to grow business	World Economic Forum	Annual	National
2. Attract private capital from both domestic and international sources	1. Private fixed investment as % gross domestic fixed investment	Outcome	The ratio of gross private domestic investment to gross domestic fixed investment, expressed as a percentage	Indicate the level of business investment and improved environment	PSD, BoG	Annual	National
	2. Domestic credit to the private sector as share of GDP	Outcome	The value of domestic credit to the private sector expressed as a percentage of GDP	Measures access to capital for the private sector	PSD, BoG	Annual	National
3. Pursue and expand market access	1. Change in the number of non-traditional export (NTE) destinations	Output	The percentage change in destinations for non-traditional exports	Improved diversification of exports	MoTI	Annual	National
	2. Share of non-traditional exports	Outcome	Share in NTEs by destination category	Measure of diversification of destination and expansion in	MoTI	Annual	National

Policy Objective	Indicator	Type of Indicator	Definition of Indicator	Rationale	Source	Frequency	Disaggregation
	by destination category			market access			
	3. Percentage change in NTEs	Outcome	Change in the value of NTEs expressed as a percentage of the value of NTEs of the preceding year	Measures expansion in value of NTEs	MoTI	Annual	National
	4. Percentage of NTEs in total exports	Outcome	The total ratio or percentage contribution of NTEs to total exports in a given year	Measures diversification from traditional commodities	MoTI/BoG/GSS	Annual	National
	5. Total merchandise exports	Outcome	The value of all goods and services exported, including cocoa, timber and gold	Measures size of external market for Ghana's products	MoTI	Annual	National
<b>FOCUS AREA 2: GOOD CORPORATE GOVERNANCE</b>							
1. Promote an enabling environment and effective regulatory framework for corporate management	1. UN Global Compact	Output	The Ghana Business Code is a series of prescriptions based on the universal principles referred to in the UN Global Compact 10 Principles, relating to human rights, labour standards, the environment, and anti-corruption	Assesses the extent of corporate responsibility of Ghanaian business with regard to people, profit and the planet.	GIPC, AGI, MoTI	Annual, Quarterly	National
<b>FOCUS AREA 3: DEVELOP MICRO, SMALL AND MEDIUM ENTERPRISES (MSMEs)</b>							
1. Improve efficiency and competitiveness of MSMEs	1. Size of the MSME sector	Outcome	The total value of all investments in the MSME sector expressed as a percentage of GDP	It is a measure of the contribution of MSME sector to the economy	MoTI, AGI,	Annual	National
	2. Share of private sector credit to SMEs by deposit money banks	Outcome	The value of credit to SMEs by DMBs expressed as a percentage of total credit	Measure of access to credit by the private sector	MoTI, BoG, AGI	Annual	National
<b>FOCUS AREA 4: INDUSTRIAL DEVELOPMENT</b>							
1. Ensure rapid industrialisation driven by strong linkages to agriculture and other natural resource endowments	1. Manufacturing value added as a percentage of GDP	Outcome	It is obtained by dividing the value added in manufacturing by the total gross value added to GDP at basic or producer prices expressed as a percentage.	The indicator measures the contribution of the manufacturing sector to total production. It assesses the performance of the manufacturing sector and its contribution to the state of the economy.	MoTI, BoG, GSS	Annual	National

Policy Objective	Indicator	Type of Indicator	Definition of Indicator	Rationale	Source	Frequency	Disaggregation
<b>FOCUS AREA 5: DEVELOPING THE TOURISM INDUSTRY FOR JOBS AND REVENUE GENERATION</b>							
1. Develop tourism as a major industry	1. Change in tourist arrivals	Outcome	Change in the number of tourists who arrive in the country through the nation's ports of entry, expressed as a percentage of the previous year's number of tourist arrivals	The extent to which the country is becoming an important tourism destination	MoTCCA, GIS, GTA	Annual, Quarterly	National, International, Domestic
	2. Change in tourism receipts	Outcome	The rate of change of revenue from the tourism sector per annum expressed as a percentage	Contribution of tourism to employment and foreign exchange earnings	MoTCCA, GTA	Annual, Quarterly	National
	3. Percentage change in tourist accommodation establishments (hotels, guest houses, lodges, etc.)	Output	Ratio of change in the value of investment expressed as a percentage	It is a measure of Ghana's tourism potential in support of economic development	MoTCCA, GTA	Annual, Quarterly	National
	4. Percentage change in domestic tourism a. Number of domestic tourists b. Revenue accrued from fees (GH¢)	Outcome	The total visits to tourist sites within Ghana by residents (both Ghanaians and non-Ghanaians), expressed as a percentage of the previous year's total	It measures the contribution of domestic tourism to the economy	MoTCCA, GTA	Annual	National
<b>FOCUS AREA 6: DEVELOPING CULTURE AND CREATIVE ARTS INDUSTRY</b>							
1. Developing a competitive creative arts industry	1. Creative arts Council Established	Input	Developing and approving the legal framework required for the establishing a Council for the Creative Arts, as well as establishing the institutional structures for its operations.	Measures of appropriate institutional framework for supporting the development of the creative arts industry	MoTCCA	Annual	National
	2. Number of Jobs Created by the Industry	Outcome	Count of total number of jobs created by the creative arts industry	It measures the contribution of domestic tourism to the economy.	MoTCCA	Annual	National, Domain Type
	3. Creative arts share of NTEs	Output	Value of creative arts products and services exported expressed as a percentage of total value of NTEs	It measures the contribution of domestic tourism to the economy.	MoTCCA/ GEPA	Annual	National

## 2.2 PERFORMANCE INDICATORS WITH BASELINE AND TARGETS

Indicator	Type of Indicator	Definition of Indicator	Baseline data (2013)	TARGETS			
				2014	2015	2016	2017
<b>FOCUS AREA 1: PRIVATE SECTOR DEVELOPMENT</b>							
3. Doing Business rank	Outcome	The Ease of Doing Business is the index calculated as the ranking on the simple average of a country's percentile rankings on each of the 10 topics covered (Starting a business; Dealing with licenses; Hiring and firing workers; Registering property; Getting credit; Protecting investors; Paying taxes; Trading across borders; Enforcing contracts; and Closing a business).	67 <sup>th</sup> out of 189 countries	60 <sup>th</sup> out of 183	58 <sup>th</sup> out of 183	55 <sup>th</sup> out of 183	50 <sup>th</sup> out of 183
4. Business Competitiveness Index	Output	The Business Competitiveness Index (BCI) focuses on the underlying microeconomic factors which determine the economy's current sustainable levels of productivity and competitiveness. It specifically measures the sophistication of company operations and strategy, as well as the quality of the overarching national business environment in which they operate.	114 <sup>th</sup> out of 144 countries	100 <sup>th</sup> out of 144 countries	97 <sup>th</sup> out of 144	92 <sup>nd</sup> out of 144	90 <sup>th</sup> out of 144
5. Private fixed investment as % gross domestic fixed investment	Outcome	The ratio of gross private domestic investment to gross domestic fixed investment, expressed as a percentage	25.0%	40%	57%	85%	95%
6. Domestic credit to the private sector as share of GDP	Outcome	The value of domestic credit to the private sector expressed as a percentage GDP	GH¢11,478.20 million 15.2%	18%	22%	25%	30%
7. Change in the number of non-traditional export destinations	Output	The percentage change in number of destinations for non-traditional exports	140 countries	140 countries	143 countries	145 countries	150 countries
8. Share of non-traditional exports (NTEs) by destination category	Outcome	% Share in NTEs by destination category: - European Union (EU) - ECOWAS - Other African Countries - Other Developed Countries - Other Countries	31.55% 34.83% 3.46% 10.62% 19.54%	35% 36% 4% 11% 21%	39% 37% 5% 12% 23%	42% 38% 6% 13% 25%	45% 40% 9% 15% 28%
9. Percentage change in NTEs	Outcome	Change in the value of non-traditional exports, expressed as percentage of the NTEs of the preceding year	3.04% US\$2.436 bn	5%	7.5%	11.25%	16.88%
10. Percentage of NTEs in total exports	Outcome	The total ratio or % contribution of NTEs to total exports in a given year	17.71%	18%	20%	22%	24%

Indicator	Type of Indicator	Definition of Indicator	Baseline data (2013)	TARGETS			
				2014	2015	2016	2017
11. Total merchandise exports	Outcome	The value of all goods and services exports, including cocoa, timber and gold	US\$ 13,751.92 mn	US\$16,800 mn	US\$18,000 mn	US\$19,500 mn	US\$ 20,000 mn
<b>FOCUS AREA 2: GOOD CORPORATE GOVERNANCE</b>							
1. The number of firms signed on to the UN Global Compact	Output	The UN Global Compact comprises of 10 Principles, relating to human rights, labour standards, the environment, and anti-corruption	27	60	90	135	145
<b>FOCUS AREA 3: DEVELOP MICRO, SMALL AND MEDIUM ENTERPRISES (MSMEs)</b>							
1. Size of the MSME sector	Outcome	The total value of all investments in the MSME sector expressed as a percentage of GDP	NA	NA	NA	NA	NA
2. Share of private sector credit to SMEs by deposit money banks	Outcome	The value of credit to SMEs by DMBs expressed as a percentage of total credit to the private sector	79.89%	79.9%	85%	88%	92%
<b>FOCUS AREA 4: INDUSTRIAL DEVELOPMENT</b>							
2. Share of manufacturing value added in GDP	Outcome	This is obtained by dividing the value added in manufacturing by the total gross value added to GDP at basic or producer prices expressed as a percentage.	6.3%	8%	10%	20%	40%
<b>FOCUS AREA 5: DEVELOPING THE TOURISM INDUSTRY FOR JOBS AND REVENUE GENERATION</b>							
1. Change in tourist arrivals	Outcome	Change in the number of tourists who arrive in the country through the nation's ports of entry, expressed as a percentage of the previous year's number of tourist arrivals	NA	NA	NA	NA	NA
2. Change in tourism receipts	Outcome	The rate of change of revenue of the tourism sector per annum expressed as a percentage	11.5% US\$1,900 mn	10.1% US\$2,066 mn	10.1% US\$2,275 mn	10.1% US\$2,505 mn	10.1% US\$2,758 mn
3. Percentage change in tourist accommodation (hotels, guest houses, lodges, etc.)	Output	Change in the value of investment in tourist accommodation expressed as a percentage of previous year figure	8.3% (Total #=2,312)	10%	12%	15%	
4. Percentage change in domestic tourism:	Outcome	The total visits to tourist sites within Ghana by resident Ghanaian and other nationals expressed as a percentage of the previous year's totals					
a. No. of domestic tourists			1,168,990 (for 25 sites) 7.58%	5% 1,227,440	4.8% 1,288,812	5.0% 1,353,253	5% 1,420,915
b. Revenue accrued from fees (GH¢)			2,109,881.35 (for 22 sites)	NA	NA	NA	NA

# 3

## **ACCELERATED AGRICULTURAL MODERNISATION AND SUSTAINABLE NATURAL RESOURCE MANAGEMENT**

### 3.0 ACCELERATED AGRICULTURAL MODERNISATION AND SUSTAINABLE NATURAL RESOURCE MANAGEMENT

#### 3.1 SUMMARY PERFORMANCE INDICATORS AND THEIR DEFINITIONS

Policy Objective	Indicator	Type of Indicator	Definition of Indicator	Rationale	Source	Frequency	Disaggregation
<b>A. <u>ACCELERATED MODERNISATION OF AGRICULTURE</u></b>							
<b>FOCUS AREA 1: AGRICULTURE PRODUCTIVITY</b>							
1. Promote agriculture mechanisation	1. Tractor-to-farmer ratio	Output	The ratio of the total number of tractors available in the country to number of farmers	Determines the extent of mechanisation in Ghana	MoFA,	Annual	National, Regional, District
	2. Number of mechanised centres established and operational	Output	The total number of mechanised centres set-up and providing mechanisation services to farmers	Measures farmers' access to mechanized services at affordable cost. It also assesses government commitment to agricultural mechanisation as a means of improving productivity.	MoFA, RTIU, AESD	Annual	National, Regional, District
2. Improve science, technology and innovation application	1. Number of improved technologies demonstrated to farmers: -Livestock -Fisheries -Crop	Output	The total number of improved technology demonstrated to livestock, fish and crop farmers per annum	It assesses the level of effort applied to using improved technologies to improve agricultural productivity	MoFA, RADUs	Annual	National, Regional, Category (livestock, fisheries and crop)
	2. Total number of beneficiary farmers with access to various agriculture technologies	Output	The total number of farmers who benefited from agricultural technology	Measure of improved access to agriculture technology	MoFA	Annual	National, Regional, Gender
3. Promote seed planting material development	1. Quantity of foundation seeds produced (tonnes): -Maize -Sorghum -Rice -Cowpea	Output	The volume of foundation seeds produced per annum	Measure of availability of production inputs	MoFA	Annual	National, Regional

Policy Objective	Indicator	Type of Indicator	Definition of Indicator	Rationale	Source	Frequency	Disaggregation
	-Soybean -Groundnut						
4. Increase access to extension services and re-orientation of agricultural education	1. Extension officer-farmer ratio (excluding cocoa extension officers)	Output	The ratio of the total extension officers to total farmer population	Determines the adequacy of extension services available for agriculture modernisation	MoFA, DAES	Annual	National, Regional, Gender
	2. Participation rate in Research Extension Farmer Linkages Committees (RELCs)	Output	Number of farmers as percentage of total participants of RELCs programme per annum	Gives indication of the extent of extension services available to farmers	MoFA	Annual	National, Regional, District
	3. Number of farmer-based organisations (FBOs) trained in extension services delivery	Output	Total number of FBOs trained in extension services	Measures strengthened capacity for extension services to support agriculture	MoFA, DAES	Annual	National, Regional, Gender
5. Improve institutional coordination for agricultural development	Implementation efficiency ratio of approved annual programmes of the agriculture sector	Output	The proportion of approved annual agriculture programmes actually implemented	Measure of improved institutional efficiency	MoFA	Annual	National
<b>FOCUS AREA 2: IMPROVE PRIVATE SECTOR FINANCING OF AGRICULTURE</b>							
1. Increase private sector investment in agriculture	1. The share of credit to agriculture, forestry and fishing by deposit money banks (excluding cocoa)	Input	Volume of credit to agriculture as a percentage of total credit from deposit money banks	Assesses the extent of finance available for agricultural development	MoFA,	Annual	National, Regional
<b>FOCUS AREA 3: AGRICULTURE COMPETITIVENESS AND INTEGRATION INTO DOMESTIC AND INTERNATIONAL MARKETS</b>							
1. Improve post-production management	1. Percentage change in post-harvest losses: - Maize - Rice - Sorghum - Cassava - Yam - Groundnut	Outcome	The quantitative or qualitative losses in storage, transport, harvest and marketing of agricultural produce (crops, livestock, fisheries) incurred after harvest as a percentage of total production	A measure of loss to investment made in agriculture and food security	MoFA, SRID	Annual	National, Regional
2. Develop an effective domestic market	Average weekly/daily food distribution outlets per district	Output	Total number of district food markets (daily to weekly) all year round, divided by total	A measure of access to domestic markets for sale of agriculture commodities	MoFA, SRID	Annual	National, Regional

Policy Objective	Indicator	Type of Indicator	Definition of Indicator	Rationale	Source	Frequency	Disaggregation
			number of agricultural districts				
3. Expand agriculture exports	Total volume and value of agricultural commodities exported: - Cashew - Coffee - Sheanut - Maize - Yam products - Exotic vegetables - Pineapple - Mango - Pawpaw - Banana - Fish and sea food	Outcome	The change in value and volume of selected agricultural commodities exported as a percentage of total value and volume	Measure of extent of Ghana's integration into international markets.	MoFA, AGEPC, BoG, MoF	Annual, Quarterly	National, traditional and non-traditional exports
<b>FOCUS AREA 4: PRODUCTION AND DISTRIBUTION RISKS/ BOTTLENECKS IN AGRICULTURE AND INDUSTRY</b>							
1. Promote irrigation development	1. Percentage of cultivated lands under irrigation (area developed for irrigation/ha): - Total area (formal and non-formal) - Formal - Non-formal	Output	The ratio of arable land under irrigation to total arable land, expressed as a percentage	Determines the extent of irrigation development as an alternative to rain-fed agriculture	GIDA, AESD, MoFA	Annual	National, Regional
2. Improve public financing of agriculture	1. Percentage of GoG budgetary resources allocated to the agriculture sector	Input	The ratio of budgetary allocation for agricultural development to the total investment budget, expressed as a percentage	A measure of government commitment to agricultural development	MoFA, MoF	Annual	National, Regional
3. Promote sustainable environment, land and water management	1. Fertiliser application rate	Input	Quantity of fertiliser applied (in kilograms) per hectare of cultivated area	A measure of sustainable used of arable land	MoFA, COCOB	Annual	National, Regional
<b>FOCUS AREA 5:SELECTED CROP DEVELOPMENT FOR FOOD SECURITY, EXPORT AND INDUSTRY</b>							
1. Promote	1. Percentage change in yield	Outcome	The ratio of total output/yield	It is a measure of	MoFA	Annual	NO DATA?

Policy Objective	Indicator	Type of Indicator	Definition of Indicator	Rationale	Source	Frequency	Disaggregation
development of selected staple and horticultural crops	per unit area of land cultivated: - Maize - Rice(milled) - Millet - Sorghum - Cassava - Yam - Cocoyam - Plantain - Groundnut - Cowpea - Soybean		to the area of cultivated land expressed as a percentage	agricultural productivity			
	2. Percentage change of volume of production: - Maize - Rice (milled) - Millet - Sorghum - Cassava - Yam - Cocoyam - Plantain - Groundnut - Cowpea - Soybean	Outcome	Change in the quantity of selected crops produced, expressed as a percentage of the previous year's total output	It is a measure of level of agricultural production	MoFA	Annual	National, Regional
2. Promote development of selected cash crops	1. Total volume of selected cash crops produced: - Cocoa - Shea butter - Oil palm - Cotton	Outcome	The total quantity of selected cash crops produced in a given year	It is a measure of output of selected cash crops promoted	MoF, COCOB	Annual	National
	2. Share of cocoa output processed locally	Outcome	The total quantity of cocoa processed in Ghana as a percentage of total output of cocoa produced	It a measure of strengthened capacity of the manufacturing sector	MoTI, AGI	Annual	National, Regional

Policy Objective	Indicator	Type of Indicator	Definition of Indicator	Rationale	Source	Frequency	Disaggregation
	3. Volume of shea butter exported annually	Outcome	The total volume in tonnes of shea butter exported in the year	Determines increase in international markets for shea butter	GIPC, MoFA,	Annual	National, Regional
<b>FOCUS AREA 6: LIVESTOCK AND POULTRY DEVELOPMENT</b>							
Promote livestock and poultry development for food security and income generation	Livestock contribution to GDP	Outcome	Total annual value of livestock and poultry produced, expressed as a percentage of GDP	Measure of the importance of livestock and poultry in economic growth and development of Ghana	MoFA, MOF, BoG	Annual	National, Regional
<b>FOCUS AREA 7: FISHERIES DEVELOPMENT FOR FOOD SECURITY AND INCOME GENERATION</b>							
1. Enhance fish production and productivity	1. Fisheries contribution to Ghanaian protein intake	Outcome	The per capita consumption of fish expressed as a percentage of per capita protein intake	Determines the significance of fish as a source of protein for Ghanaians	MoFA, Fisheries Commission	Annual	National, Regional
	2. Total fish supply (tonnes): - Marine - Inland capture fisheries - Harvesting of ponds/cages - Ponds and reservoirs - Cages - Total domestic production (tonnes) - Import	Outcome	Total fish supply (in tonnes) from marine, inland capture, harvesting and imports	Determines the extent of fisheries development	MoFA, Fisheries Commission	Annual	National
2. Promote aquaculture development	1. Total surface water area under fish farming (excluding cages)	Output	The total surface area used for fish farming in a given year	Determines the extent of aquaculture development	MoFA, Fisheries Commission	Annual	National
	2. Quantity of fish produced per hectare of pond per year	Outcome	The ratio of total fish supply (in tonnes per year) from fish ponds to total hectares of ponds per year	Determines the extent of aquaculture development	MoFA, Fisheries Commission	Annual	National

Policy Objective	Indicator	Type of Indicator	Definition of Indicator	Rationale	Source	Frequency	Disaggregation
<b>B. SUSTAINABLE NATURAL RESOURCE MANAGEMENT</b>							
<b>FOCUS AREA 1: NATURAL RESOURCE MANAGEMENT AND MINERALS EXTRACTION</b>							
1. Promote sustainable extraction and use of mineral resources	1. Mineral rights and production: a. Mineral rights granted	Outcome	Total number of mineral rights granted by Minerals Commission to mining companies in respect of mining lease, prospecting, reconnaissance, salt, quarry, clay, sand winning, small-scale gold/diamond, and mica	Measure how the nation's mineral resources are being exploited	Chamber of Mines, MLNR Minerals Commission (MC)	Annual	National
	b. Mineral production - Gold - Diamonds - Bauxite - Manganese		Quantity and value of selected minerals produced per annum				
	2. Percentage of minerals production processed locally	Outcome	Value of locally processed minerals, expressed as a percentage of total mineral production	Measure of value addition to mineral resources	Chamber of Mines, MLNR, MC	Annual	National
	3. Benefits of mineral production to Ghanaian economy, with respect to labour, FDI, and revenue: a. Labour - Large scale (expatriate and local) ; male and female - Small scale (legal and illegal)	Outcome	Number of persons employed in large- and small-scale mining, both expatriate and local	Assesses the performance of the industry to allow comparison with other sectors of the economy	Chamber of Mines, MLNR, MC, Bank of Ghana, MoF, Ghana Statistical Service (GSS)	Annual	National
	b. Foreign direct investment (in US\$)		Ratio of FDI to GDP, expressed in percentage				
	c. Mineral revenues (GH¢) - Royalties - Taxes		Total amount of mineral revenues received through taxes, royalties, corporate social responsibility and				

Policy Objective	Indicator	Type of Indicator	Definition of Indicator	Rationale	Source	Frequency	Disaggregation
	<ul style="list-style-type: none"> <li>- Corporate social responsibility</li> <li>- Contribution to total merchandise exports</li> </ul> <p>d. Repatriation of mineral revenue</p> <ul style="list-style-type: none"> <li>- % of mineral revenue returned to the Ghanaian economy (BoG and commercial banks)</li> <li>- % of mineral revenue spent on local goods</li> </ul>		<p>export of mineral resources in Ghana cedis</p> <p>Ratio of revenue from mineral exports returned to the economy to total revenue, expressed as a percentage</p> <p>The value of mineral revenue spent on local goods, expressed as a percentage of total revenue from mineral resources in a given year</p>				
	4. Proportion of Minerals Development Fund allocated to District Assemblies, stools and traditional authorities	Outcome	Total funds allocated to DAs, stools and traditional authorities, and mining sector agencies as a percentage of total Minerals Development Fund	Assesses the amount of the Minerals Development Fund that goes to Chiefs, DAs and communities as royalties	MLNR, MC	Annual	National
2. Ensure sustainable management of natural resources	1. Proportion of proven and probable reserves of major mineral resources extracted	Output	Ratio of extracted mineral resources to proven and probable reserves, expressed as a percentage	Assesses rate of extraction of the country's mineral resources	MLNR, MC	Annual	National
	2. Rate of change in reserves of major minerals	Outcome	The change in value of the mineral resources base, expressed as a percentage of the previous year	Assesses the country's mineral resource base/potential	MLNR, MC	Annual	National
	3. Percentage compliance to the Annual Allowable Cut (AAC)	Output	The volume of controlled wood harvested in a given year in cubic metres (both on-reserve and off-reserve) expressed as a percentage of wood permitted to be harvested	Measures level of compliance with the Annual Allowable Cut (AAC). The ACC refers to the amount of wood permitted to be harvested in the country in a one-year period to ensure the sustainability and productivity of our forests	MLNR, FC	Annual	National
	4. Percentage of Ghana Extractive Industries Transparency Initiative	Output	The number of recommendations ratified by the relevant agency, expressed	A measure of improvement in transparency and governance of natural	MoF, GHEITI Secretariat	Annual	National

Policy Objective	Indicator	Type of Indicator	Definition of Indicator	Rationale	Source	Frequency	Disaggregation
	(GHEITI) recommendations ratified		as a percentage of the total recommendations in the Ghana Extractive Industries Transparency Initiative (GHEITI) report of preceding year	resource revenue			
<b>FOCUS AREA 2: BIODIVERSITY MANAGEMENT</b>							
1. Reduce loss of biodiversity	Rate of loss of biodiversity	Output	The amount of Ghana's biodiversity loss annually, expressed as a percentage of amount existing at the beginning of the year	Measures how effectively Ghana is managing its biodiversity for continuous beneficial uses	FC/MLNR/MC, MESTI	Annual	National
<b>FOCUS AREA 3: PROTECTED AREAS MANAGEMENT</b>							
1. Maintain and enhance the ecological integrity of protected areas	1. Number of recorded infractions in Ghana's protected areas	Output	Total number of infractions (including recorded bush fire cases in Ghana's permanent forest estate as well as savannah/woodland areas under the protection of the Forestry Commission) and coverage (in hectares)	Indicates progress made in securing Ghana's permanent forest estate as well as savannah/woodland areas	FC/MLNR	Annual	National, Region
	2. Total number of protected area staff	Output	The total number of protected area staff nationwide to combat illegal activities within the forest and wildlife protected areas	Indicates national capacity to provide protection for permanent forest estate as well as savannah/woodland areas.	FC/MLNR	Annual	National, Regional
<b>FOCUS AREA 4: LAND MANAGEMENT AND RESTORATION OF DEGRADED FOREST</b>							
1. Reverse forest and land degradation	1. Rate of deforestation	Output	The change in forest cover arising out of conversion of forested land to other uses, expressed as a percentage of total forested area of previous year	Assesses the extent of forest cover converted to other land uses as well as forest cover depletion	MLNR/FC	Annual	National, Regional, District
	2. Hectares of degraded forest, mining, dry and wet lands restored/rehabilitated: -Forest -Mining -Wetlands and mangroves	Output	Total area in hectares of lost forest, mining, wetland and mangrove areas restored	Measures progress in restoring degraded environment	MLNR/FC, MESTI, Chamber of Mines, Minerals Commission	Annual	National, Regional

Policy Objective	Indicator	Type of Indicator	Definition of Indicator	Rationale	Source	Frequency	Disaggregation
	3. Number of days to register lands: - Land title certificate - Land Registry (Deeds)	Output	Average number of days it takes to get title to land in a year	Measures progress on the efforts at improving land administration and management	MLNR/LC	Annual	National, Regional
<b>FOCUS AREA 5: INTEGRATED MARINE AND COASTAL MANAGEMENT</b>							
1. Improve investment in coastal control structures and technologies	Proportion of investment in financing control structures, construction, and technological improvements (%)	Input	Percentage of resources invested in coastal control structure relative to resource needs	Measures national capacity to restore coastal resources and economic activities, protect life and property	MWRWH	Annual	By National
2. Protect coastal forest, wetlands and marine areas	Proportion of terrestrial and marine area that is degraded	Output	Total area in hectares of degraded coastal forest, wetlands and marine areas	Measures effort at reducing degradation of terrestrial and marine areas	MESTI	Annual	National
3. Reduce pollution and poor sanitation in coastal areas	Level of pollution of coastal waters and main lagoons	Output	A measure of concentrations of daily biological oxygen demand loads (BOD <sub>5</sub> ), suspended solids, turbidity, and conductivity of coastal waters and lagoons	Monitors progress in reducing coastal pollution	MESTI/EPA/MWRWH	Annual	National
<b>FOCUS AREA 6: WETLANDS AND WATER RESOURCES MANAGEMENT</b>							
1. Ensure sustainable use of wetlands and water resources	1. Number of basin management structures established	Output	Total number of basin offices and management boards established and functional	Gives an indication of the number of river basin boards that have been set up to oversee the management of each basin's water resources in a holistic manner	MLNR, FC, MDAs, EPA, WRC	Annual	National, Regional, District
	2. Per capita share of raw water resources	Output	Average share of total raw water resources per person	Provides information on the amount of raw water resources available to each individual for domestic and productive use	Water Resources Commission (WRC)	Annual	National
<b>FOCUS AREA 7: WASTE MANAGEMENT, POLLUTION AND NOISE REDUCTION</b>							
1. Promote effective waste management, air pollution, and noise reduction	1. National capacity for effective solid waste disposal (%)	Output	Volume of solid waste generated in major towns and cities per annum, expressed as percentage of available capacity for solid waste disposal (site and treatment plants)	Measures national capacity for proper waste disposal	MLGRD	Annual	National, Major towns and Cities

Policy Objective	Indicator	Type of Indicator	Definition of Indicator	Rationale	Source	Frequency	Disaggregation
	2. Proportion of companies compliant with Environmental Assessment (EA) and Environmental Management Plan (EMP) permit conditions	Output	The number of companies issued with EA and EMP permits as a percentage of all companies	Gives an indication improved regulatory environment for ensuring that development activities are carried out in an environmentally sound and sustainable manner	MESTI, EPA	Annual	National
	3. PM <sub>10</sub> (Particulate Matter ) pollution level	Output	Average level of particulate matter in the air at selected locations in Accra	Measure of the impact of interventions in reducing air pollution	MESTI, EPA	Annual	Selected locations in Accra and other cities
<b>FOCUS AREA 8: COMMUNITY PARTICIPATION IN NATURAL RESOURCE MANAGEMENT</b>							
1. Enhance resource management through community participation	1. Number of communities involved in sustainable afforestation and reforestation programmes	Output	The number of communities involved in afforestation and forest programmes	Shows the ability of empowered communities to control and manage forest resources to ensure environmental security for their livelihoods.	FC	Annual	National
	2. Proportion of timber royalties going to resource owners	Output	The revenue generated from timber production that goes to resource owners, expressed as percentage of total royalties	Measures extent to which benefits are shared from timber resource revenue	FC	Annual	National
<b>FOCUS AREA 9: CLIMATE VARIABILITY AND CHANGE</b>							
1. Mitigate the impact of climate variability and change	1. Percentage of sectors with climate change mitigation and adaptation strategies	Outcome	The number of MDAs with climate change mitigation and adaptation measures as relate to agriculture, marine ecosystems, coastal zone infrastructure, human health and settlement, biodiversity water resources and wetlands etc, expressed as percentage of total MDAs	It is a measure of improved institutional arrangement for climate change mitigation and adaption	MESTI/EPA	Annual	National
	2. Greenhouse gas emissions	Outcome	Emissions of carbon dioxide, methane, nitrous oxide, and several fluorinated gases in Ghana, expressed in million tonnes of carbon dioxide equivalent	Measures threat to climate change and variability	MESTI/EPA	Annual	National
	3. Global Green Economy Index (GGEI) for Ghana	Outcome	Provides a ranking of country and city performance in the	Measures Ghana's green economic performance	MESTI/EPA	Annual	National

Policy Objective	Indicator	Type of Indicator	Definition of Indicator	Rationale	Source	Frequency	Disaggregation
			global green economy (GGE) and how expert practitioners perceive this performance. The performance index uses quantitative and qualitative indicators to measure how well each country performs in four key dimensions: leadership and climate change; efficiency sectors; markets and investment; and environment and natural capital	within the global context			
<b>FOCUS AREA 10: NATURAL DISASTERS, RISKS AND VULNERABILITY</b>							
1. Enhance capacity to mitigate and reduce the impact of natural disasters, risks and vulnerability	1. Number of districts affected by natural disasters (especially bush fires and flooding)	Output	Total number of districts affected by natural disaster per annum	Measures level of vulnerability of communities	MoFA/ NADMO	Annual	National/ regional
	2. Number of communities trained in disaster prevention and management (especially bush fires and flooding)	Output	Total number of communities that benefit from disaster prevention and management training per annum	Measure of preparedness of a community to prevent and mitigate natural disaster	MoFA/ NADMO	Annual	National/ regional

### 3.2 PERFORMANCE INDICATORS WITH BASELINE AND TARGETS

Indicator	Type of Indicator	Definition of Indicator	Baseline data (2013)	Targets			
				2014	2015	2016	2017
<b>A. ACCELERATED MODERNISATION OF AGRICULTURE</b>							
<b>FOCUS AREA 1: AGRICULTURAL PRODUCTIVITY</b>							
1. Tractor-to-farmer ratio	Output	The ratio of total number of tractors available in the country to number of farmers	1:1,500	1:1,500	1:1,500	1:1,300	1:1,200
2. Number of mechanised centres established and operational	Output	The total number of mechanised centres set up and providing mechanisation services to farmers	89	89	89	115	130
3. Number of improved technologies demonstrated to farmers: - Livestock - Fisheries - Crop	Output	The total number of improved technologies demonstrated to livestock, fish and crop farmers per annum	357	349	400	400	400
4. Total number of beneficiary farmers with access to various agriculture technologies	Output	The total number of farmers who benefited from agricultural technology	1,708,558	1,358,642	1,800,000	1,800,000	1,800,000
5. Quantity of foundation seeds (tonnes): - Maize - Sorghum - Rice - Cowpea - Soybean - Groundnut	Output	The volume of foundation seeds produced per annum	21.0 2.0 15.0 1.5 1.0 0.0	30.0 0.5 10.0 10.0 5.0 2.0	30.0 0.5 10.0 10.0 5.0 2.0	68.0 4.0 27.0 23.0 18.0 14.0	77.0 5.0 36.0 27.0 23.0 18.0
6. Extension officer-farmer ratio (excluding cocoa extension officers)	Output	The ratio of total extension officers to total farmer population	1:1500	1:2000	1:1500	1:1300	1:1200
7. Participation rate in Research Extension Farmer Linkages Committees (RELCs)	Output	Number of farmers as percentage of total participants of RELCs programme per annum	32%	40%	40%	40%	40%
8. Number of FBOs trained in extension services delivery	Output	Total Number of FBOs trained in extension services	5,780	6,600	6,800	7,000	7,000
9. Implementation efficiency ratio of approved annual programmes of the agriculture sector	Output	The proportion of approved annual agriculture programmes actually implemented	0.73	0.75	0.75	0.8	0.8

Indicator	Type of Indicator	Definition of Indicator	Baseline data (2013)	Targets			
				2014	2015	2016	2017
<b>FOCUS AREA 2: IMPROVE PRIVATE SECTOR FINANCING OF AGRICULTURE</b>							
1. The share of credit to agriculture, forestry and fishing (excluding cocoa) by deposit money banks	Input	Volume of credit to agriculture as a percentage of total credit from deposit money banks	3.2% GH¢535.91 mn	≥10%	≥10%	≥10%	≥10%
<b>FOCUS AREA 3: AGRICULTURE COMPETITIVENESS AND INTEGRATION INTO DOMESTIC AND INTERNATIONAL MARKETS</b>							
1. Percentage change in post-harvest losses: -Maize -Rice -Sorghum -Cassava -Yam -Groundnut	Outcome	The quantitative or qualitative losses in storage, transport and marketing to agricultural produce (crop, livestock, fisheries) incurred after harvest as a percentage of total production	28.10 5.46 3.01 24.88 16.28 NA	26.35 4.98 2.68 22.45 14.25 NA	24.60 4.50 2.35 20.02 12.22 NA	22.85 4.02 2.02 17.59 10.19 NA	21.10 3.78 1.86 16.36 9.18 NA
1. The average weekly/daily food distribution outlets per district	Output	Total number of district food markets (daily to weekly) all year round, divided by the total number of agricultural districts	NA	NA	NA	NA	NA
2. Total volume and value of agricultural commodities exported: - Cashew - Coffee - Sheanut - Maize - Yam Products - Exotic Vegetables - Pineapple - Mango - Pawpaw - Banana	Outcome	The total value and volume of selected agricultural commodities exported (Figures in parenthesis represents volume in MT and those not parenthesis represent total value in US\$)	155,628,466 (271,536.8) 4,277,876 (4,317.2) 8,062,696 (37,517.8) 248,952 (1,535.0) 20,857,985 (28,200.4) 834,765 (1,474.8) 19,208,877 (40,095.4) 5,110,721 (1,788.6) 713,424 (1,118.5) 2,287,010	NA NA NA NA NA NA NA NA NA NA 9,417.90 3,523.90 206,395.00 7,301.10	NA NA NA NA NA NA NA NA 9,794.60 3,744.20 221,875.50 7,629.70	NA NA NA NA NA NA 10,171.40 3,964.50 252,831.00 8,006.40	NA NA NA NA NA NA 10,549.00 4,184.70 268,310.00 8,383.10

Indicator	Type of Indicator	Definition of Indicator	Baseline data (2013)	Targets			
				2014	2015	2016	2017
- Fish and Sea Food			(8.656.1) 33,104,597 (13,837.0)	NA	NA	NA	NA
<b>FOCUS AREA 4: PRODUCTION AND DISTRIBUTION RISKS/ BOTTLENECKS IN AGRICULTURE</b>							
1. Percentage of cultivated lands under irrigation (area developed for irrigation/ha): - Total area (formal and non-formal) - Formal - Non-formal	Output	The ratio of arable land under irrigation to total arable land, expressed as a percentage	1.04% (30,588.84) (11,112.5) (19,476.3)		110,500 40,143.2 70,356.8	121,500 44,139.3 77,360.7	129,476 47,036.9 82,439.1
2. Percentage of GoG budgetary resources allocated to the agriculture sector	Input	The ratio of budgetary allocation for agricultural development to total investment budget, expressed as a percentage	NA	10%	10%	10%	10%
3. Fertiliser application rate	Input	Quantity of fertiliser applied (in kilograms) per hectare of cultivated area	8	50	50	50	50
<b>FOCUS AREA 5: SELECTED CROP DEVELOPMENT FOR FOOD SECURITY, EXPORT AND INDUSTRY</b>							
1. Percentage change in yield per unit/ area of land cultivated: - Maize - Rice (milled) - Millet - Sorghum - Cassava - Yam - Cocoyam - Plantain - Groundnut - Cowpea - Soybean	Outcome	The ratio of total output to the unit area of cultivated land expressed as a percentage	-8.02 3.94 -6.73 -5.79 9.07 7.77 0.46 2.56 -10.14 -30.34 24.24	10 10 10 10 10 1 NA NA NA 5 NA	10 10 10 10 10 1 NA NA NA 5 NA	10 10 10 10 10 1 NA NA NA 5 NA	10 10 10 10 10 1 NA NA NA 5 NA
2. Percentage change of volume of production: - Maize - Rice (milled) - Millet - Sorghum - Cassava - Yam - Cocoyam - Plantain	Outcome	Change in the quantity of selected crops produced, expressed as a percentage of the previous year's total output	-9.5 -17.1 -13.7 -8.3 9.9 6.6 -0.7 3.3	6.40 0.95 NA NA 52.40 22.80 NA 12.20	7.29 0.99 NA NA 52.47 22.96 NA 12.28	7.91 1.03 NA NA 52.55 23.12 NA 12.36	8.33 1.07 NA NA 52.62 23.28 NA 12.43

Indicator	Type of Indicator	Definition of Indicator	Baseline data (2013)	Targets			
				2014	2015	2016	2017
- Groundnut			83.1	NA	NA	NA	NA
- Cowpea			32.1	NA	NA	NA	NA
- Soybean			-70.8	NA	NA	NA	NA
3. Total volume of selected cash crops produced:	Outcome	The total quantity of selected cash crops produced in a given year					
- Cocoa			835,466.15mt	800,000mt	900,000mt	1000,000mt	1000,000mt
- Shea butter			249,567 mt	NA	NA	NA	NA
- Oil Palm			NA	NA	NA	NA	NA
- Cotton			NA	NA	NA	NA	NA
4. Share of cocoa output processed locally	Outcome	The total quantity of cocoa processed in Ghana as a percentage of total output of cocoa produced in the given year	27.06%	30%	40%	45%	60%
5. Volume of shea butter exported annually	Outcome	The total volume in tonnes of shea butter exported in the year	2,623.7 tonnes	NA	NA	NA	NA
<b>FOCUS AREA 6: LIVESTOCK AND POULTRY DEVELOPMENT</b>							
1. Livestock contribution to GDP	Outcome	Total annual value of livestock and poultry produced, expressed as a percentage of GDP	5.3%	6%	6%	6%	6%
<b>FOCUS AREA 7: FISHERIES DEVELOPMENT FOR FOOD SECURITY AND INCOME</b>							
1. Fisheries contribution to Ghanaian protein intake	Outcome	The per capita consumption of fish expressed as a percentage of per capita protein intake	19.9	22.4	20.5	22.3	24.7
2. Total fish supply (tonnes):	Outcome	Total fish supply (in tonnes) from marine, inland capture, harvesting and imports					
- Marine			314,867.57	305,000	314,041.56	308,933.66	303,825.76
- Inland capture fisheries			86,740.75	105,000	87,370.60	90,200.56	93,030.96
- Harvesting of ponds/cages			32,512.00	42,000	52,000.00	68,500.00	100,000.00
- Total domestic production (tonnes)			434,120.32	452,000	453,412.16	467,634.22	469,856.72
- Imports			150,700.61		144,232.00	139,082.00	129,382.00
3. Total surface water area under fish farming (excluding cages)	Output	The total surface area used for fish farming in a given year	703.66	NA	NA	NA	NA
4. Quantity of fish produced per hectare of pond per year	Outcome	The ratio of total supply (in tonnes per year) from fish ponds to total hectares of ponds per year	3.11	3.0	3.2	3.2	3.4
5. Quantity of fish produced per volume of cage per year (tonnes/m <sup>3</sup> /yr)	Outcome	The ratio of total fish supply (in tonnes) produced from fish cages to total volume of ponds	0.09	NA	NA	NA	NA

Indicator	Type of Indicator	Definition of Indicator	Baseline data (2013)	Targets			
				2014	2015	2016	2017
<b>B. SUSTAINABLE NATURAL RESOURCE MANAGEMENT</b>							
<b>FOCUS AREA 1: NATURAL RESOURCE MANAGEMENT AND MINERALS EXTRACTION</b>							
1. Statistical overview of mineral sector							
a. Mineral production	Outcome	Quantity and value of selected minerals produced per annum					
- Gold (ounces)			4,396,987	4,200,000	4,298,191	4,384,155	4,574,155
- Diamonds (carat)			160,821	230,000	246,060	250,980.89	256,001
- Bauxite (tonnes)			908,586	950,000	980,380	999,987.74	1,019,988
- Manganese (tonnes)			1,724,417	1,700,000	1,562,022	1,593,262.32	1,625,128
b. Labour	Outcome	Number of persons employed in large- and small-scale mining, both expatriate and local					
- Large scale (expatriate and local); male and female			34,720	26,000	25,000	25,000	25,000
- Small scale (legal)			510,000	550,000	600,000	600,000	600,000
- Small scale (illegal)			450,000	450,000	400,000	400,000	400,000
c. Foreign Direct Investment (in U.S Million)	Outcome	Ratio of FDI to GDP, expressed as a percentage	1,200	1,200	960	1,000	1,100
d. Benefits of mining (mineral revenue (Gh¢)		Total amount of mineral revenues received through taxes, royalties, corporate social responsibility and export of mineral resources, in Ghana cedis					
- Royalties			364,673,038		479,773,404	489,368,872	499,156,250
- Taxes			739,374,276		736,772,989	751,508,449	766,538,618
- Corporate social responsibility			12,120,000	NA	NA	NA	NA
- Contribution to total merchandise exports (US\$ mn)			5,138.89	NA	4,606.62	4,698.76	4,792.73
e. Repatriation of mineral revenue:	Outcome	Ratio of revenue from sales of mineral resources abroad returned to the economy to total revenue, expressed as a percentage					
- % mineral revenue returned to Ghanaian economy (BoG and commercial banks)			68	60	55	55	55
- % of mineral revenue spent on local goods		The value of mineral revenue spent on local goods, expressed as a percentage of total revenues from mineral resources produced in a given year	39	NA	47	48	48
f. Mineral rights granted (mining lease, prospecting, reconnaissance, salt, quarry, clay, sand winning, small-scale gold/diamond, mica)	Outcome	Total number of mineral rights granted by Minerals Commission to mining companies in respect of mining lease, prospecting, reconnaissance, salt, quarry, clay, sand winning, small scale gold/diamond, and mica	391	NA	145	150	155

Indicator	Type of Indicator	Definition of Indicator	Baseline data (2013)	Targets			
				2014	2015	2016	2017
2. Percentage of mineral production processed locally	Outcome	Value of locally processed minerals, expressed as a percentage of total mineral production	NA	NA	NA	NA	NA
3. Proportion of Minerals Development Fund allocated to District Assemblies, stools and traditional authorities	Outcome	Total funds allocated to DAs, stools and traditional authorities, mining sector agencies as a percentage of total Fund	32,537,200	NA	NA	NA	NA
4. Percentage compliance to the Annual Allowable Cut (AAC)	Output	The volume of controlled wood harvested from the natural forest in a given year (both on-reserve and off-reserve) expressed as a percentage of wood permitted to be harvested	865,098 m <sup>3</sup> (43% of AAC)	≤ 2 million m <sup>3</sup>	≤ 2 million m <sup>3</sup>	≤ 2 million m <sup>3</sup>	≤ 2 million m <sup>3</sup>
		(AAC of ≤ 2 mill. m <sup>3</sup> on- and off-FR) (≤ 0.5 mill. m <sup>3</sup> of on-reserve AAC) (≤ 1.5 mill. m <sup>3</sup> of off-reserve AAC)	549,734 m <sup>3</sup> (110% of on-reserve AAC)	≤ 0.5 mill. m <sup>3</sup> of on-reserve AAC	≤ 0.5 mill. m <sup>3</sup> of on-reserve AAC	≤ 0.5 mill. m <sup>3</sup> of on-reserve AAC	≤ 0.5 mill. m <sup>3</sup> of on-reserve AAC
			284,863 m <sup>3</sup> (19% of off-reserve AAC)	≤ 1.5 mill. m <sup>3</sup> of off-reserve AAC	≤ 1.5 mill. m <sup>3</sup> of off-reserve AAC	≤ 1.5 mill. m <sup>3</sup> of off-reserve AAC	≤ 1.5 mill. m <sup>3</sup> of off-reserve AAC
5. Percentage of Ghana Extractive Industries Transparency Initiative (GHEITI) recommendations ratified	Output	The number of recommendations ratified by the relevant agency, expressed as a percentage of the total recommendations in the Ghana Extractive Industries Transparency Initiative (GHEITI) report of preceding year	NA	NA	NA	NA	NA
<b>FOCUS AREA 2: BIODIVERSITY MANAGEMENT</b>							
1. Rate of loss of biodiversity	Output	The amount of Ghana's biodiversity loss annually, expressed as a percentage of amount existing at the beginning of the year	NA	NA	NA	NA	NA
<b>FOCUS AREA 3: PROTECTED AREAS MANAGEMENT</b>							
1. Number of recorded infractions in Ghana's protected areas	Output	Total number of infractions (including recorded bush fire cases in Ghana's permanent forest estate as well as savannah/woodland areas under the protection of the Forestry Commission) and coverage (in hectares)	No target. Infractions must reduce by 20% of previous year's figure	No target. Infractions must reduce by 20% of previous year's figure	No target. Cases of Infractions must reduce by 20% of previous years	No target. Cases of Infractions must reduce by 20% of previous years	No target. Cases of Infractions must reduce by 20% of previous years
2. Total number of protected area staff	Output	The total number of protected area staff nationwide to combat illegal activities within forest and wildlife protected areas	3,123	3,000	2,977	2,970	2,960

Indicator	Type of Indicator	Definition of Indicator	Baseline data (2013)	Targets			
				2014	2015	2016	2017
<b>FOCUS AREA 4: LAND MANAGEMENT AND RESTORATION OF DEGRADED FOREST</b>							
1. Rate of deforestation	Output	The change in forest cover arising out of conversion of forested land to other uses, expressed as a percentage of total forested area of previous year.	1.37%	NA	NA	NA	NA
2. Hectares of degraded forest, mining, dry and wet lands restored/ rehabilitated: - Forest - Mining - Wetlands and mangroves	Output	Total area in hectares of lost forest, mining, wetland and mangrove areas restored	2,858 ha NA NA	20,000 ha NA NA	20,000 ha NA NA	20,000 ha NA NA	20,000 ha NA NA
3. Number of days to register lands: - Land title certificate  - Land registry (Deeds)	Output	Average number of days it takes to get title to land in a year	5.2 months (Accra = 7.9 months; Kumasi = 2.5 months)  4.7 months	NA  NA	NA  NA	NA  NA	NA  NA
<b>FOCUS AREA 5: INTEGRATED MARINE AND COASTAL MANAGEMENT</b>							
1. Proportion of investment in financing control structures, construction, and technological improvements (%)	Input	Percentage of resources invested in coastal control structure relative resource needs	49.8% (US\$111,777,779)	NA	NA	NA	NA
2. Proportion of terrestrial and marine area that is degraded	Output	Total area in hectares of coastal forest, wetlands and marine areas degraded	NA	NA	NA	NA	NA
3. Level of pollution of coastal waters and main lagoons	Output	A measure of concentrations of daily Biological Oxygen Demand Loads (BOD <sub>5</sub> ), suspended solids, turbidity, and conductivity of coastal waters and lagoons	NA	NA	NA	NA	NA
<b>FOCUS AREA 6: WETLANDS AND WATER RESOURCES MANAGEMENT</b>							
1. Number of basins management structures established	Output	Total number of basin offices and management boards established and functional	6	NA	NA	NA	NA
2. Per capita share of raw water resources	Output	Average share of total raw water resources per person	NA	NA	NA	NA	NA
<b>FOCUS AREA 7: WASTE MANAGEMENT, POLLUTION AND NOISE REDUCTION</b>							
1. National capacity for effective solid waste disposal (%)	Output	Volume of solid waste generated in major towns and cities per annum, expressed as a percentage of the available capacity for solid	NA	NA	NA	NA	NA

Indicator	Type of Indicator	Definition of Indicator	Baseline data (2013)	Targets			
				2014	2015	2016	2017
		waste disposal (site and treatment plants)					
2. Proportion of companies compliant with EA and EMP Permit conditions	Output	The number of companies issued with EA and EMP permit as a percentage of all companies	2644 companies	3422 companies	3700	4000	4500
3. PM <sub>10</sub> (Particulate Matter ) pollution level	Output	Average level of Particulate Matter in the air at selected locations in Accra	1. BRT Route (Mallam Market/Kasoa = Min: 14 µg/m <sup>3</sup> / Max:715µg/m <sup>3</sup> ) 2. Shangri La/La T. Junction = Min: 69 µg/m <sup>3</sup> / Max: 393 µg/m <sup>3</sup> 3. Dansoman South Industrial Area/Odorkor = Nil	1. BRT Route (Mallam Market/ Kasoa = Min: 140µg/m <sup>3</sup> / Max: 407µg/m <sup>3</sup> ) 2. Shangri La/La T. Junction = Min: 112 µg/m <sup>3</sup> / Max: 393 µg/m <sup>3</sup> 3. Dansoman South Industrial Area/ Odorkor = Min: 141µg/m <sup>3</sup> / Max: 227 µg/m <sup>3</sup>	Particulate matter (PM <sub>10</sub> ) values cannot be targeted or projected	Particulate matter (PM <sub>10</sub> ) values cannot be targeted or projected	Particulate matter (PM <sub>10</sub> ) values cannot be targeted or projected
<b>FOCUS AREA 8: COMMUNITY PARTICIPATION IN NATURAL RESOURCE MANAGEMENT</b>							
1. Number of communities involved in sustainable afforestation and reforestation programmes	Output	The number of communities involved in afforestation and forest programmes	91 communities (On-Reserve communities = 91; Off-Reserve communities = 0)	100 communities (On-Reserve communities = 100; Off-Reserve communities = 0)	120 communities (On-Reserve communities = 120; Off-Reserve communities = 0)	150 communities (On-Reserve communities = 150; Off-Reserve communities = 0)	180 communities (On-Reserve communities = 180; Off-Reserve communities = 0)
2. Proportion of timber royalties going to resource owners	Output	The revenue generated from timber production that goes to resource owners, expressed as a percentage of total royalties	50:50 (on reserve)	50:50 (on reserve)	50:50 (on reserve)	50:50 (on reserve)	50:50 (on reserve)

Indicator	Type of Indicator	Definition of Indicator	Baseline data (2013)	Targets			
				2014	2015	2016	2017
			60:40 (off reserves)	60:40 (off reserves)	60:40 (off reserves)	60:40 (off reserves)	60:40 (off reserves)
<b>FOCUS AREA 9: CLIMATE VARIABILITY AND CHANGE</b>							
1. Percentage of sectors with climate change mitigation and adaptation strategies	Outcome	The number of MDAs with climate change mitigation and adaptation measures as related to agriculture, marine ecosystems, coastal zone infrastructure, human health and settlement, biodiversity, water resources and wetlands etc., expressed as a percentage of total MDAs	4 Sectors	5 sectors	6 sectors	7 sector	8 sectors
2. Greenhouse gas emissions	Outcome	Emissions of carbon dioxide, methane, nitrous oxide, and several fluorinated gases in Ghana, express in million tonnes of carbon dioxide equivalent	33.7 million tonnes (MT)	39.3MT	44.9MT	50.5MT	56.1MT
3. Global Green Economy Index (GGEI) for Ghana	Outcome	Provides a ranking of countries and cities performance in the global green economy (GGE) and how expert practitioners perceive this performance. The GGEI uses quantitative and qualitative indicators to measure how well each country performs in four key dimensions: leadership and climate change; efficiency sectors; markets and investment; and environment and natural capital	NA	NA	NA	NA	NA
<b>FOCUS AREA 10: NATURAL DISASTERS, RISKS AND VULNERABILITY</b>							
1. Number of districts affected by natural disasters (especially bush fires and flooding)	Output	Total number of districts affected by natural disaster per annum	37	<37	<37	<37	<37
2. Number of communities trained in disaster prevention and management (especially bush fires and flooding)	Output	Total number of communities that benefitted from disaster prevention and management training per annum	NA	NA	NA	NA	NA

# **4 OIL AND GAS DEVELOPMENT**

## 4.0 OIL AND GAS DEVELOPMENT

### 4.1 SUMMARY PERFORMANCE INDICATORS AND THEIR DEFINITIONS

Policy Objective	Indicator	Type of Indicator	Definition of Indicator	Rationale	Source	Frequency	Disaggregation
<b>FOCUS AREA 1: OIL AND GAS DEVELOPMENT, AND ITS EFFECTIVE LINKAGE TO THE REST OF THE ECONOMY</b>							
1. Ensure accelerated and integrated development of the oil and gas industry	1. Amount of new investments in oil and gas sector (US\$ billion)	INPUT	Amount of investments going into exploration for oil and gas, and development of those already discovered	Possibilities of development of oil and gas	MoPe, GNPC, GNGC, PC	Annual	National
	2. Number of barrels of oil production and cubic feet of gas production per year	OUTPUT	Total number of barrels of oil and gas produced from various oilfields	Provides basis for estimating county's petroleum revenue	MoPe, GNPC, GNGC, PC	Annual	National
	3. The share of oil and gas activities in GDP/ contribution of growth in petroleum output to GDP growth	OUTPUT	Total value added of oil and gas activities as a percentage of total GDP	Measures relative importance of the oil and gas sector in overall GDP	GSS, MoF, MoPe	Annual	National
2. Promote value addition in the oil and gas industry	1. Percent of oil and gas processed within country: - Percent of gas used in power generation - Percentage of crude refined locally - Others (incl. fertilizer and petrochemical industry)	OUTPUT	Tonnes of oil and gas processed locally as a percentage of the total oil and gas produced	Extent of linkage of the industry with rest of the economy, extent of local utilisation of domestic oil and gas	MOPe, MOF	Annual	National
<b>FOCUS AREA 2: LOCAL CONTENT DEVELOPMENT</b>							
1. Ensure local content and local participation across the oil and gas value chain	1. Share of indigenous companies in total contracts	OUTCOME	The value of contracts of the oil and gas industry executed by indigenous Ghanaian industry, expressed as a percentage of total contracts of the industry per annum	It is a measure of local participation in the industry	MoPe, PC	Annual	National, Sector
	2. Percent share of domestic goods and services used in the sector	OUTCOME	The value of domestic goods and services used in the industry, expressed as a percentage of total value of goods and services used in the industry per annum	It is a measure of local participation in the industry	MoPe, PC	Annual	National, Sector

Policy Objective	Indicator	Type of Indicator	Definition of Indicator	Rationale	Source	Frequency	Disaggregation
<b>FOCUS AREA 3: EMPLOYMENT CREATION</b>							
1. Leverage the opportunities offered by the oil and gas industry to create decent jobs	1. Amount of jobs created by oil and gas industry directly, including subcontractors	OUTCOME	Number of people employed in the oil and gas industry as a percentage of total employment generated in the economy	Indicator of economic growth and employment in the oil and gas sector	MoPe, PC, GNGC, GNPC	Annual	By type of employment, gender
	2. Proportion of Ghanaians employed in the oil and gas sector	OUTPUT	Number of Ghanaians employed in the oil and gas sector as a percentage of total employment of the sector	Extent of indigenisation of both technical and manpower needs	MoPe, PC, GNGC, GNPC	Annual	National, by type, gender
<b>FOCUS AREA 4: PROTECTING THE ENVIRONMENT</b>							
1. Ensure that practices in the industry are consistent with Ghanaian and international standards of environmental sustainability	1. Percentage of companies complying with conditions of their respective Environmental Assessment (EA) and Environmental Management Plans (EMP) permit	Output	The percentage of conditions under the respective EA and EMP permits being adhered to by companies in the oil and gas sector	Measure of oil and gas company compliance with the highest environmental sustainability standards	MESTI, EPA, MoPe, GNPC, GNGC	Annual	National
<b>FOCUS AREA 5: TRANSPARENCY IN REVENUE MANAGEMENT</b>							
1. Ensure effective and transparent management of oil and gas revenue	1. Percentage compliance with the provisions under the Petroleum Revenue Management Act	OUTPUT	The proportion of provisions under the Petroleum Revenue Management Act complied with per annum (including the regular publication of revenue inflows and utilisation), expressed as a percentage	Measure of commitment to ensuring that oil and gas revenues are efficiently utilised	MoF, PIAC, MoPe, BoG, GNPC	Annual	National
	2. Proportion of petroleum revenue allocated to priority areas	OUTPUT	The proportion of Annual Budget Funding Amount (ABFA) allocated to social and economic infrastructure across all sectors, expressed as a percentage	Measure of the extent to which oil and gas is used to support long-term, socio-economic transformation of the country, including social and economic infrastructure development	MoF, PIAC, MoPe, BOG, GNPC	Annual	National, Sector

## 4.2 PERFORMANCE INDICATORS WITH BASELINE AND TARGETS

Indicator	Type of Indicator	Definition of Indicator	Baseline data (2013)	TARGETS			
				2014	2015	2016	2017
<b>FOCUS AREA 1: OIL AND GAS DEVELOPMENT, AND ITS EFFECTIVE LINKAGE TO THE REST OF THE ECONOMY</b>							
1. Amount of new investments in oil and gas sector (US\$ billion)	INPUT	Amount of investments going into exploration for oil and gas, and development of those already discovered	US\$1.63 billion	US\$0.57 billion	US\$3.8 billion*	US\$3.3 billion*	US\$3 billion*
2. Number of barrels of oil production and cubic feet of gas production per year	OUTPUT	Total number of barrels of oil and cubic feet of gas produced from various oilfields	Jubilee Oil: 35,587,558 barrels (bbls) Jubilee Gas: 47.43 billion cubic feet (Bcf) SOPCL: 105,039.60 bbls Total Oil: 35,692,597.60 bbls Total Gas: 47.43 Bcf	Jubilee Oil: 37,201,991 bbls Jubilee Gas: 55.8 Bcf SOPCL: 95,092.57 bbls Total Oil: 37,297,083 .57 bbls Total Gas: 55.8 Bcf Gas Export: 1.9 Bcf	Estimates Jubilee Oil: 36.8 million barrels (MMBbls) Jubilee Gas: 46 Bcf SPOCL: 83,950 bbls Total Oil: 36.9MMbbls Total Gas: 46 Bcf Gas Export: 27.4 Bcf	Estimates Jubilee Oil: 38.9 MMBbbls Jubilee Gas: 48.6 Bcf TEN Oil: 10.6 MMBbbls TEN Gas: 5.1 Bcf SOPCL: 65,700 bbls Total Oil: 49.5 MMBbbls Total Gas: 53.7 Bcf Gas Export: 32.94 Bcf	Estimates Jubilee Oil: 30.8 MMBbbls Jubilee Gas: 40.0 Bcf TEN Oil: 27.7 MMBbbls TEN Gas: 32.8 Bcf Sankofa Gye Nyame Oil: 2.3 MMBbbls SOPCL: 54,750 bbls Total Oil: 60.8MMbbls Total Gas: 72.8 Bcf Gas Export: 47.45 Bcf
3. The share of oil and gas activities in GDP/contribution of growth in petroleum output to GDP growth	OUTPUT	Total value added of oil and gas activities as a percentage of total GDP	6.06%	6.84%	7.89%	9.67%	13.05%
4. Percent of oil and gas processed within country: - Percent of gas used in power generation - Percentage of crude refined locally - Others (incl. fertiliser and petrochemical industry)	OUTPUT	Tonnes of gas processed locally as a percentage of total oil and gas produced	0% 0% 0%	90% 0% 0%	90% 0% 0%	90% 0% 0%	90% 0% %
<b>FOCUS AREA 2: LOCAL CONTENT DEVELOPMENT</b>							
1. Share of indigenous companies in total contracts	OUTCOME	The value of contract of the oil and gas industry executed by indigenous Ghanaian industry, expressed as a percentage of total contracts of the	NA	NA	NA	NA	NA

Indicator	Type of Indicator	Definition of Indicator	Baseline data (2013)	TARGETS			
				2014	2015	2016	2017
		industry per annum					
2. % share of domestic goods and services used in the sector	OUTCOME	The value of domestic goods and services used in the industry, expressed as a percentage of total value of goods and services used in the industry per annum	NA	NA	NA	NA	NA
<b>FOCUS AREA 3: EMPLOYMENT CREATION</b>							
1. Amount of jobs created by oil and gas industry directly, including subcontractors	OUTCOME	Number of people employed in the oil and gas industry as a percentage of total employment generated in the economy	NA	NA	NA	NA	NA
2. Proportion of Ghanaians employed in the oil and gas sector	OUTPUT	Number of Ghanaians employed in the oil and gas sector as a percentage of total employment in the sector	7,000	7,980	9,097	10,570	11,821
<b>FOCUS AREA 4: PROTECTING THE ENVIRONMENT</b>							
1. Percentage of companies complying with conditions of their respective Environmental Assessment (EA) and Environmental Management Plans (EMP) permits	OUTPUT	The percentage of conditions under the respective EA and EMP permits being adhered to by companies in the oil and gas sector	100% (all companies compliant)	100% (all companies compliant)	100% (new companies to comply)	100% (new companies to comply)	100% (new companies to comply)
<b>FOCUS AREA 5: TRANSPARENCY IN REVENUE MANAGEMENT</b>							
1. Level of compliance with the provisions under the Petroleum Revenue Management Act	OUTPUT	The number of provisions under the petroleum Revenue Management Act complied with per annum (including the regular publication of revenue inflows and utilisation), expressed as a percentage	NA	Full compliance	Full compliance	Full compliance	Full compliance
2. Proportion of petroleum revenue allocated to priority areas	OUTPUT	The proportion of Annual Budget Funding Amount (ABFA) allocated to social and economic infrastructure across all sectors, expressed as a percentage	NA	ABFA 70% of GoG receipts	ABFA 70% of GoG receipts	ABFA 70% of GoG receipts	ABFA 70% of GoG receipts

# **5** **INFRASTRUCTURE AND HUMAN SETTLEMENT DEVELOPMENT**

## 5.0 INFRASTRUCTURE AND HUMAN SETTLEMENT DEVELOPMENT

### 5.1 SUMMARY PERFORMANCE INDICATORS AND THEIR DEFINITIONS

Policy Objective	Indicator	Type of Indicator	Definition of Indicator	Rationale	Source	Frequency	Disaggregation
<b>A. INFRASTRUCTURE DEVELOPMENT</b>							
<b>FOCUS AREA 1: TRANSPORT INFRASTRUCTURE (ROAD, RAIL, WATER AND AIR TRANSPORT) AND LOGISTICS</b>							
1. Establish Ghana as a transportation hub for the West African sub-region	1. Volume of goods transited through Ghana: - Transit traffic - Transit containers	OUTPUT	The volume of goods that passes through Ghana	Measures the extent to which Ghana is becoming a transit hub for goods in the West Africa sub-region	MoT	Annual, Quarterly	National
	2. Number of passengers transiting through Ghana	OUTPUT	The number of passengers that pass through Ghana	The extent to which Ghana is becoming a transit hub for passengers from the West Africa sub-region	MoT	Quarterly	National
2. Create and sustain an efficient and effective transport system that meets user needs	1. Total road network size: - Trunk road - Urban road - Feeder road	OUTCOME	The length of each road network type, measured in kilometres	Measures change in road network size relative to Ghana's status as a middle-income country	MRH, GHA, DUR, DFR	Annual	National, Regional, type
	2. Road condition mix	OUTCOME	The road condition mix shows the proportion of the entire national road network which is good, fair, poor)	Measures improvement and reliability in transport infrastructure	MRH, GHA, DUR, DFR	Annual	National, Regional, type
	3. Proportion of roads maintained/rehabilitated	OUTPUT	Roads rehabilitated/maintained as a percentage of total roads	Improvement and reliability in transport infrastructure	MRH, GHA, DUR, DFR	Annual	National, Regional, type
	4. Annual accident statistics for each transport mode: - Road crashes - Maritime accidents - Train derailments - Air traffic accidents	IMPACT	Number of accidents for each transport mode	A measure of efficiency in the management of the transport system	MoT, MRH	Annual	National, Regional, type
	5. Total air freight and number of air passengers by categories: -Domestic aircraft movement -International aircraft movement -Domestic passengers	OUTCOME	Number of air passengers and weight of air freight to and from Ghanaian airports	A measure of efficiency in the management of the transport system	MRH, MoT	Annual	National

Policy Objective	Indicator	Type of Indicator	Definition of Indicator	Rationale	Source	Frequency	Disaggregation
	-International passengers -Freight movement (tonnes)						
	6. Passenger traffic and goods traffic by railways: - Passenger traffic (1,000 passengers-km) - Goods traffic (1,000 tonnes-km)	OUTCOME	Number of passengers and weight of goods carried by railways	A measure of efficiency in the management of the transport system	MRH, MoT	Annual	National
	7. Maritime traffic : Goods loaded and unloaded (in 1,000 tonnes)	OUTCOME	Weight of goods in tonnes carried by maritime traffic, to and from Ghana	A measure of efficiency in the management of the transport system	MRT, MoT	Annual	National
	8. Percentage change in turn-around time of vessels at: • Tema port • Takoradi port	OUTCOME	The change in the average time spent for a vessel to unload goods in the current year relative to the preceding year, expressed as a percentage	Measures improvement and reliability in transport infrastructure	MoT	Annual	National
<b>FOCUS AREA 2: SCIENCE, TECHNOLOGY AND INNOVATION TO SUPPORT PRODUCTIVITY AND DEVELOPMENT</b>							
1. Promote the application of science, technology and innovation in all sectors of the economy	1. Research and development (R&D) expenditure as a percentage of GDP	OUTCOME	Total public expenditure by government and government institutions, and private sector investments in science, technology and innovation, expressed as a percentage of GDP	Provides an assessment of research efforts by private sector and government	MESTI, CSIR,GAEC, MoE, WDI	Annual	National
	2. Number of research findings adopted by industry	OUTPUT	The number of research findings of key national research institutions (including CSIR, GAEC and the universities) adopted by industry	Measures the extent of adoption of science and technology by industry to improve operational efficiency	MESTI/ MoTI/MOE/ MoFA/CSIR/ GAEC	Annual	National, Sector
	3. Rate of adoption of improved, locally-packaged technologies by MSMEs (%)	OUTPUT	The number of improved, locally-packaged technologies adopted by MSMEs, expressed as a percentage of total locally-packaged technologies	Measures the extent of application of science and technology by MSMEs to enhance their operational efficiency	MESTI/ MoTI/MOE/ MoFA/CSIR/ NBSSI/ GRATIS	Annual	National, Sector
<b>FOCUS AREA 3: INFORMATION AND COMMUNICATION TECHNOLOGY (ICT) DEVELOPMENT</b>							
1. Promote rapid development and deployment of national ICT infrastructure	1. Total broadband capacity of the country	INPUT	Total broadband capacity in terabytes, both public and private	A measure of broadband capacity/ availability for ICT development	MoC/NITA/ NCA	Annual/ Quarterly	National, Sector
	2. Percentage change in the value of	IMPACT	The change in the value of public and private investment relative to	Measures extent of promotion of ICT	MoC/MoF / WDI	Annual	By type

Policy Objective	Indicator	Type of Indicator	Definition of Indicator	Rationale	Source	Frequency	Disaggregation
	total investment in the ICT sector		previous year's value, expressed as a percentage of investment in the ICT sector	development and deployment across the country and in key sectors of economy			
2. Increased use of ICT in all sectors of the economy	1. Size of the ICT industry	OUTCOME	The total value of the ICT industry expressed as a percentage of GDP	Measures the contribution of the ICT industry to GDP	GSS, MoC	Annual	National
	2. Teledensity/penetration rate: • Fixed • Mobile	IMPACT	Ratio of the total number of telephone lines (fixed and mobile lines) expressed as a percentage of the total population	Utilisation and integration of ICT in key sectors of the economy	MoC, WDI	Annual	By type (i.e. fixed /mobile, gender, Regional, rural/urban)
	3. Dropped-call rate (DCR)	OUTCOME	The average number of calls dropped per customer per year expressed as a percentage of total number of phone calls	Measures quality of services provided by telecommunication companies	MoC, NCA	Annual/ Quarterly	National, Regional
	4. Internet penetration rate: • Subscribers • Providers	IMPACT	The ratio of population with access to internet to total population, expressed as a percentage	Utilisation and integration of ICT in key sectors of the economy	MoC/NCA/ NITA/Service providers/ MoE	Annual	By type of consumer (i.e. households/ businesses)
<b>FOCUS AREA 4: SOCIAL, COMMUNITY AND RECREATIONAL INFRASTRUCTURE</b>							
1. Develop social, community and recreational facilities	1. Size of designated public space	OUTCOME	Total land area in acres designated as public space across the country	Measures national effort at integrating social, community and recreational activities into national development	MLGRD/ Department of Parks and Gardens	Annual	National/ Regional/District
<b>FOCUS AREA 5: ENERGY SUPPLY TO SUPPORT INDUSTRIES AND HOUSEHOLDS</b>							
1. Provide adequate, reliable and affordable energy to meet national needs and for export	1. Percentage of households with access to electricity	IMPACT	The number of households with electricity as a percentage of total number of households	Measures access of households to electricity	EC/ MoPe/ MoP/PURC/ GSS	Annual	By region/gender
	2. Average number of hours of electricity outage per consumer per year	OUTCOME	The length of time power was off for each customer in a year	Measures reliability of electricity supply	MoPe/MoP/ EC/PURC/ ECG/ GRIDCO/ NEDCO	Annual	National
	3. Additional kilometres of transmission and distribution lines constructed	OUTPUT	Total number of additional kilometres of transmission and distribution lines constructed	Measures improvement in transmission and distribution capacity of electricity	MoP/ECG/ NEDCO/ GRIDCO	Annual	National, regional
	4. Power supply deficit/surplus	OUTPUT	Total generation capacity as a ratio of the estimated domestic demand for power	Indicates national capacity to guarantee reliable energy supply	MoP/VRA/ EC	Annual	National

Policy Objective	Indicator	Type of Indicator	Definition of Indicator	Rationale	Source	Frequency	Disaggregation
	5. Percentage of indigenous energy sources such as: - Hydro - Thermal - Renewable (i.e. solar)	OUTPUT	The quantity of electricity generated by the various sources such as hydro, thermal and renewable sources, expressed as a percentage of total electricity supply	A measure of diversification and fuel mix	MOP/VRA/EC	Annual	National
	6. Percentage change in: - Transmission losses - Distribution losses	OUTCOME	The difference between power purchased from producers and sales by transmission and distribution companies, expressed as a percentage of power purchased	A measure of operational efficiency (i.e. efficiency of energy conversion and distribution)	MoP, ECG, NEDCO, EC, PURC, GRIDCO		
<b>B. HUMAN SETTLEMENTS DEVELOPMENT</b>							
<b>FOCUS AREA 6: SPATIAL/LAND USE PLANNING AND MANAGEMENT</b>							
1. Promote a sustainable, spatially integrated and orderly development of human settlements	1. Human Settlements Policy formulated and adopted	INPUT	Statement of intent on spatially integrated hierarchy of urban and rural settlements	Measures the effort at providing the policy basis for implementing interventions aimed at ensuring a balanced distribution of the population across the country	MLGRD/TCPD, NDPC	One time	National/Regional /District
	2. Percentage of MMDAs with at least one professional Town Planning Officer	INPUT	The number of MMDAs with a professional Town Planning officer, expressed as a percentage of total number of MMDAs	Indicates the capacity of MMDAs for spatial planning and management	MLGRD/MESTI/TCPD/MMDAs	Annual	National/Regional, District/sex
<b>FOCUS AREA 7: URBAN DEVELOPMENT AND MANAGEMENT</b>							
1. Promote resilient urban infrastructure development, maintenance and provision of basic services	Urban Development Policy formulated	OUTPUT	Existence of a policy on how urban communities are expected to be developed and managed	Provides policy basis for interventions to ensure urban development	MLGRD, TCPD	Annual	National
<b>FOCUS AREA 8: RURAL DEVELOPMENT AND MANAGEMENT</b>							
1. Create an enabling	Rural Development Policy and	OUTPUT	Existence of a policy on how rural communities are expected	Provides policy basis for interventions to	MLGRD, TCPD	Annual	National

Policy Objective	Indicator	Type of Indicator	Definition of Indicator	Rationale	Source	Frequency	Disaggregation
environment to accelerate rural growth and development	Action Plan approved		to be developed and managed	ensure rural development			
2. Facilitate the sustainable use and management of natural resources that support the development of rural communities and livelihoods	Average number of rural service centres established per district	OUTPUT	The total number of rural services centres supporting agriculture and agro-based industries established per annum, divided by the total number of MMDAs	A measure of extent of pro-rural intervention to support the development of rural communities and livelihoods	GSS, MWRWH, MLGRD, MoFA	Annual	National, regional, type, gender
<b>FOCUS AREA 9: INSTITUTIONAL ARRANGEMENT FOR IMPLEMENTING HUMAN SETTLEMENTS DEVELOPMENT</b>							
1. Establish an institutional framework for effective coordination of human settlements development	1. Establishment of the National Human Settlements Commission	PROCESS	Existence of functional apex body for complementing the role of NDPC in coordinating human settlements development	A measure of the appropriate institutional arrangement for coordinating human settlements development	TCPD, MESTI, MLGRD, NDPC	One time	National
<b>FOCUS AREA 10: HOUSING AND SHELTER</b>							
2. Upgrade existing slums and prevent the occurrence of new ones	2. Proportion of people living in slum areas	OUTCOME	Total population living in slum areas as characterised by overcrowded housing and lack of access to infrastructure (water, electricity supply, drains) as a percentage of the total population in selected cities and of national population	A measure of improved living conditions of the population in slum areas	GSS, MWRWH, MLGRD	Periodic	Five selected cities (Accra, Kumasi, Takoradi, Tamale, Tema)
<b>FOCUS AREA 11: WATER AND ENVIRONMENTAL SANITATION AND HYGIENE</b>							
1. Accelerate the provision of adequate, safe and affordable	1. Percentage of population with sustainable access to safe drinking water sources	OUTCOME	Share of population with access to safe drinking water, expressed as a percentage of total population	Measures improvements in socio-economic conditions of the population, availability of water	GSS, MWRWH, Ghana Water Company Limited	Annual	National regional, district sex (male/female) wealth quintile rural/urban

Policy Objective	Indicator	Type of Indicator	Definition of Indicator	Rationale	Source	Frequency	Disaggregation
water				for economic activities, as well as reduction in potential sources of water-borne diseases	(GWCL), CWSA		
	2. Percentage of distribution losses	OUTCOME	The difference between total volume of water treated and that distributed, expressed as percentage of the total amount of water produced at the treatment point	Measures operational inefficiencies	GSS, MWRWH, GWCL	Annual	National regional, district (urban only)
	3. Total number of functional water systems constructed/rehabilitated	OUTPUT	Total count of water systems, consisting of -boreholes, with hand pumps - hand-dug wells, with hand pumps -Piped water systems/schemes -Rainwater harvesting systems/schemes	Indicates an year-round availability of safe and functional water facilities for rural, peri-urban and urban population	CWSA GWCL CONIWAS	Annual	National, regional, district
	4. Percentage of districts in the country benefiting from safe water services	OUTPUT	Share of the total number of districts benefiting from from safe water services provided by the government and its development partners, expressed as a percentage of total number of districts	Indicates the proportion of districts benefiting from safe water interventions in the country	CWSA GWCL CONIWAS GSS MLGRD	Annual	National, regional
2. Accelerate the provision of improved environmental sanitation facilities	1. Percentage of population with access to improved sanitation services	IMPACT	Share of population with access to improved household toilet facilities	Correlates with health indicators and environmental sanitation	MLGRD, CWSA GSS MMDAs	Annual	National regional, district, type, rural-urban, gender
	2. Proportion of solid and liquid waste properly disposed of (major towns/cities): - Solid - Liquid	IMPACT	Percentage of solid waste collected and disposed of in sanitary landfills in the five largest cities – Accra, Tema, Kumasi, Takoradi, Tamale.	Correlates with health indicators and environmental sanitation	MMDAs MLGRD	Annual	National, regional
	3. Percentage of communities or districts achieving open defecation-free (ODF) status	IMPACT	Communities achieving open defecation-free status expressed as a percentage of all communities	Provides information on open defecation trends correlated to response to community-led total sanitation campaigns	MMDAs, MLGRD, CWSA, EHSD	Annual	Rural, urban, district

## 5.2 PERFORMANCE INDICATORS WITH BASELINE AND TARGETS

Indicator	Type of Indicator	Definition of Indicator	Baseline data (2013)	Targets			
				2014	2015	2016	2017
<b>A. INFRASTRUCTURE DEVELOPMENT</b>							
<b>FOCUS AREA 1: TRANSPORT INFRASTRUCTURE (ROAD, RAIL, WATER AND AIR TRANSPORT) AND LOGISTICS</b>							
1. Volume of goods transited through Ghana: - Transit traffic - Transit containers	OUTPUT	The volume of goods that passes through Ghana	659,378 34,516	652,051 tonnes 37,284 Twenty-foot equivalent unit (TEUs)	643,777 tonnes 27,679 TEUs	666,956 tonnes 28,625 TEUs	696,695 tonnes 29,860 TEUs
2. Number of passengers transiting through Ghana	OUTPUT	The number of passengers that pass through Ghana	162,305	177,773	200,432	222,079	247,173
3. Total road network size: - Trunk roads - Urban roads - Feeder roads	OUTCOME	The length of each road network type, measured in kilometres	14,873 km 14,000 km 42,190 km	14,873 km 14,000 km 42,190 km	14,873 km 14,000 km 42,190 km	14,873 km 14,000 km 42,190 km	14,873 km 14,000 km 42,190 km
4. Road condition mix	OUTCOME	The road condition mix shows the proportion of the entire national road network which is good, fair, poor)	45% good 25% fair 30% poor	45% good 29% fair 26% poor	50% good 26% fair 24% poor	55% good 23% fair 22% poor	60% good 20% fair 20% poor
5. Proportion of roads maintained/rehabilitated	OUTPUT	Roads rehabilitated/maintained as a percentage of total roads	45%	50%	55%	60%	65%
6. Annual accident statistics for each transport mode: - Road crashes - Maritime accidents - Train derailments - Air traffic accidents	IMPACT	Number of accidents for each transport mode	14,390 - 47 1	10,500 - 25 -	10,200 - 20 -	9,900 - - -	9,600 - - -
7. Total freight and number of passengers by air, by categories: -Domestic aircraft -International aircraft -Domestic passengers -International passengers -Freight movement (tonnes)	OUTCOME	Number of air passengers and weight of air freight to and from Ghanaian airports	23,437 23,437 778,466 1,669,603 43,688	25,150 15,787 652,055 1,729,289 47,969	26,732 18,324 873,623 1,840,999 48,976	28,454 21,269 1,176,595 1,962,689 50,837	30,329 24,823 1,574,990 2,095,367 54,294
8. Passenger traffic and goods traffic carried by railways: - Passenger traffic (in 1,000 passenger-km) - Goods traffic (1,000 tonnes-km)	OUTCOME	Number of passengers and weight of goods carried by railways	19,470 65,046	25,857 83,160	20,512 35,280	32,739 99,099	35,998 108,990

Indicator	Type of Indicator	Definition of Indicator	Baseline data (2013)	Targets			
				2014	2015	2016	2017
9. Maritime traffic : Goods loaded and unloaded (in 1,000 tonnes)	OUTCOME	Weight of goods (in tonnes) carried by maritime traffic to and from Ghana	849,548 16,970,304	1,048,000 17,058,600	1,130,000 18,335,300	1,215,000 20,007,000	1,283,000 21,082,930
10. Percentage change in turn-around time of vessels at the: <ul style="list-style-type: none"> <li>• Tema port</li> <li>• Takoradi port</li> </ul>	OUTCOME	Change in average time spent for a vessel to unload goods in the current year relative to the preceding year, expressed as a percentage	145.69 57.13	115 40	120 38	110 35	100 30
<b>FOCUS AREA 2: SCIENCE, TECHNOLOGY AND INNOVATION TO SUPPORT PRODUCTIVITY AND DEVELOPMENT</b>							
1. Research and development (R&D) expenditure as a percentage of GDP	OUTCOME	Total public expenditure by the government and government institutions, and private sector investment in science, technology and innovation, expressed as a percentage of GDP	0.05%	0.05%	0.05%	0.50%	1%
2. Number of research findings adopted by industry	OUTPUT	The number research findings of key national research institutions (including CSIR, GAEC, and universities) adopted by industry	54	NA	63	75	77
3. Rate of adoption of improved locally-packaged technologies by MSMEs (%)	OUTPUT	The number of improved locally-packaged technologies adopted by MSMEs, expressed as a percentage of total locally-packaged technologies	48%	NA	28%	30%	35%
<b>FOCUS AREA 3: INFORMATION AND COMMUNICATIONS TECHNOLOGY (ICT) DEVELOPMENT</b>							
1. Total broadband capacity of the country	INPUT	Total broadband capacity in terabytes, both public and private	12.3 terabytes per second	13.3 terabytes per second	13.3 terabytes per second	13.3 terabytes per second	13.3 terabytes per second
2. Percentage change in the value of total investment in the ICT sector	IMPACT	The change in the value of public and private investment relative to previous year's value, expressed as a percentage of total investment in the ICT sector	NA	NA	NA	NA	NA
5. Size of the ICT industry	OUTCOME	The total value of the ICT industry expressed as a percentage of GDP	24.7% (service sector)	32% (service sector)	35.5% (service sector)	40% (service sector)	44.7% (service sector)
6. Teledensity/penetration rate: <ul style="list-style-type: none"> <li>• Fixed</li> <li>• Mobile</li> </ul>	IMPACT	Ratio of the total number of telephone lines (fixed and mobile lines) expressed as a percentage of the total population	1.0% 107.2%	0.97% 110.30%	0.97% 119.41%	1.0% 120%	1.0% 128%
7. Dropped-call rate (DCR)	OUTCOME	The average number of calls dropped per customer per year expressed as percentage of total number of phone calls	2.21	0.05	3.5	0.05	0.05

Indicator	Type of Indicator	Definition of Indicator	Baseline data (2013)	Targets			
				2014	2015	2016	2017
8. Internet penetration rate: • Subscribers • Providers	OUTCOME	The ratio of population with access to internet to total population, expressed as a percentage	40.75% 67%	50% 67%	62.05% 53%	68.2% 48%	72.05% 46%
<b>FOCUS AREA 4: SOCIAL, COMMUNITY AND RECREATIONAL INFRASTRUCTURE</b>							
1. Size of designated public space	OUTCOME	Total land area in acres designated as public space across the country	NA	NA	NA	NA	NA
<b>FOCUS AREA 5: ENERGY SUPPLY TO SUPPORT INDUSTRIES AND HOUSEHOLDS</b>							
1. Percentage of households with access to electricity	IMPACT	The number of households with electricity, as a percentage of total number of households	ECG – 72% NEDCo – 47.3%	ECG – 76% NEDCo – 51.7%	ECG – 80% NEDCo – 56.7%	ECG – 84% NEDCo – 62.1%	ECG – 88% NEDCo – 68.0%
2. Average number of hours of electricity outage per consumer per year	OUTCOME	The length of time the power was off for each customer in a year	<b>NEDCo</b> SAIDI: Urban- 95 Rural- 146 <b>ECG</b> SAIDI: Urban-173.76 Rural-142.62	<b>NEDCo</b> SAIDI: Urban- 173 Rural- 170 <b>ECG</b> SAIDI: Urban- 72 Rural-144	<b>NEDCo</b> SAIDI: Urban- 173 Rural- 170 <b>ECG</b> SAIDI: Urban-72 Rural-144	<b>NEDCo</b> SAIDI: Urban- 90 Rural- 100 <b>ECG</b> SAIDI: Urban-72 Rural-144	<b>NEDCo</b> SAIDI: Urban- 48 Rural- 72 <b>ECG</b> SAIDI: Urban-72 Rural-144
3. Additional kilometres of transmission and distribution lines constructed	OUTPUT	Total number of additional kms of transmission and distribution lines constructed	33kV Lines- 130.51km 11kV Lines- 607.56Km LV Lines - 33,784.83Km  NEDCo: 169	33kV- 835.22Km 11kV- 344.59Km LV- 10,703.47  NEDCo: 670	NA  NEDCo: 527	NA  NEDCo: 768	NA  NEDCo: 790
4. Power supply deficit/surplus	OUTPUT	Total generation capacity as a ratio of the estimated domestic demand for power	92%	100%	<b>82.6%</b> Supply from plants: existing - 76% and committed expansion-7%. Candidate-17%	<b>89.6%</b> Supply from plants: existing - 76% and committed expansion-13%. Candidate-12%	<b>85.1%</b> Supply from plants: existing - 71% and committed expansion- 13%. Candidate-16%
5. Percentage of indigenous energy sources such as:  - Hydro - Thermal - Renewable sources (i.e. solar)	OUTPUT	The quantity of electricity generated by the various sources such as hydro, thermal and renewable sources expressed as a percentage of total electricity supply	VRA, Bui, TICo, SAPP, CENIT  63.97 36.01 0.02	  48.08 51.90 0.03	  38.63 61.34 0.03	  38.12 61.65 0.03	  35.43 64.43 0.14
6. Percentage change in: - Transmission losses	OUTCOME	The difference between power purchased from producers and sales by	23.37%	24.13%	20%	20%	20%

Indicator	Type of Indicator	Definition of Indicator	Baseline data (2013)	Targets			
				2014	2015	2016	2017
- Distribution losses		transmission and distribution companies, expressed in percentage of power purchased	NEDCo 21.2%	NEDCo 22.0%	NEDCo 21.5%	NEDCo 21.0%	NEDCo 20.5%
<b>B. HUMAN SETTLEMENTS DEVELOPMENT</b>							
<b>FOCUS AREA 6: SPATIAL/LAND USE PLANNING AND MANAGEMENT</b>							
1. Human Settlements Policy formulated and adopted	INPUT	Statement of intent on spatial integrated hierarchy of urban and rural settlements	Baseline studies for policy formulation completed	Review of baseline report for policy completed	Baseline report validated and adopted	Human settlements policy formulated	Human settlements policy validated and adopted
2. Percentage of MMDAs with at least one professional Town Planning Officer	INPUT	The number of MMDAs with a professional Town Planning officer, expressed as a percentage of total number of MMDAs	NA	NA	NA	NA	NA
<b>FOCUS AREA 7: URBAN DEVELOPMENT AND MANAGEMENT</b>							
1. Urban Development Policy formulated	OUTPUT	Existence of a policy on how urban communities are expected to be developed and managed	NA	Review of policy	Review of policy	Policy implementation	Policy implementation
<b>FOCUS AREA 8: RURAL DEVELOPMENT AND MANAGEMENT</b>							
1. Rural Development Policy and Action Plan approved	OUTPUT	Existence of a policy on how rural communities are expected to be developed and managed	NA	NA	Zero draft developed	Submitted to and approved by Cabinet	Policy and Action Plan implemented
1. Average number of rural service centres established per district	OUTPUT	The total number of rural service centres supporting agriculture and agro-based industries established per annum, divided by the total number of MMDAs	NA	NA	NA	NA	NA
<b>FOCUS AREA 9: INSTITUTIONAL ARRANGEMENTS FOR IMPLEMENTING HUMAN SETTLEMENTS DEVELOPMENT</b>							
1. Establishment of the National Human Settlements Commission	PROCESS	Existence of functional apex body for complementing the role of NDPC in coordinating human settlements development	Land Use and Spatial Planning Authority not established. Legal backing for establishment 80% done	Relevant law establishing Authority passed	Business plan for Authority formulated	Authority established with a functioning Board	NA
<b>FOCUS AREA 10: HOUSING AND SHELTER</b>							
1. Proportion of people living in slum areas	OUTCOME	Population living in slum areas as characterised by overcrowded housing	NA	NA	6,534,114	6,651,728	6,771,459

Indicator	Type of Indicator	Definition of Indicator	Baseline data (2013)	Targets			
				2014	2015	2016	2017
		and lack of access to infrastructure (water, electricity supply, drains) as a percentage of the total population in the selected cities					
<b>FOCUS AREA 11: WATER AND ENVIRONMENTAL SANITATION AND HYGIENE</b>							
1. Percentage of population with sustainable access to safe drinking water sources	OUTCOME	Share of population with access to safe drinking water, expressed as a percentage of total population	Urban: 57.47% Rural: 63.38%	Urban: 65.76% Rural: 72%	Urban: 71% Rural: 76%	Urban: 72.9% Rural: 78%	Urban: 83.9% Rural: 80%
2. Percentage distribution losses	OUTCOME	The difference between total volume of water treated and that distributed, expressed as percentage of the total amount of water produced at the treatment point	50%	48%	46%	45%	44%
3. Total number of functional water systems constructed/ rehabilitated	OUTPUT	Total count of water systems, consisting of: -boreholes, with hand pumps - hand-dug wells, with hand pumps -Piped water system/schemes -Rainwater harvesting systems/schemes	635 25 66 0 94	NA	NA	NA	NA
4. Percentage of districts in the country benefiting from safe water services	OUTPUT	Number of districts benefiting from safe water services provided by the government and its development partners, expressed as a percentage of total number of districts	181	181	190	190	190
5. Percentage of population with access to improved sanitation services	IMPACT	Share of population with access to improved household toilet facilities	14% (Source: JMP, 2014)	18%	22%	26%	30%
6. Proportion of solid and liquid waste properly disposed of (major towns/cities): - Solid - Liquid	IMPACT	Percentage of solid waste collected and disposed of in sanitary landfills in the five largest cities – Accra, Tema, Kumasi, Takoradi, Tamale.	75% >1%	80% 1%	NA 3%	NA 5%	NA 7%
7. Percentage of communities or districts achieving open defecation-free (ODF) status	IMPACT	Communities achieving open defecation-free status expressed as percentage of all communities	2%	5%	NA	NA	NA

**NB: SAIDI = Outage duration (hours)**

# **6 HUMAN DEVELOPMENT, PRODUCTIVITY AND EMPLOYMENT**

## 6.0 HUMAN DEVELOPMENT, PRODUCTIVITY AND EMPLOYMENT

### 6.1 SUMMARY PERFORMANCE INDICATORS AND THEIR DEFINITIONS

Policy Objective	Indicator	Type of Indicator	Definition of Indicator	Rationale	Source	Frequency	Disaggregation
<b>FOCUS AREA 1: EDUCATION</b>							
1. Enhance access to education	1. Gross enrolment ratio in kindergarten, primary, junior high school JHS, senior high school (SHS)	OUTPUT	Ratio of the number of pupils/students at a given level of schooling regardless of age to the number of children in the relevant age group	Indicator of participation in the education system	MoE, GES	Annual	National, Region, Deprived districts Sex
	2. Net enrolment ratio in kindergarten, primary, JHS	OUTPUT	The ratio of the number of appropriately aged children enrolled in basic schools to the number of children in the relevant age group	Used to monitor progress towards the goal of achieving universal primary education and the enforcement component of FCUBE. Linked to MDG 2.	MoE, GES	Annual	National, Regional Deprived districts Sex
	3. Completion rate in Primary 6, JHS3, SHS3	OUTCOME	Total number of pupils/students enrolled in the last grade of a given level of education (Primary 6, JHS 3, SHS 3), regardless of age, expressed as a percentage of the total population of the theoretical entrance age to the last grade of that level of education	Represents education system coverage and pupil progression. Indicator of school system quality and efficiency.	MoE, GES	Annual	National, Regional Deprived districts Sex
	4. Total enrolment in tertiary institutions	OUTPUT	The total number of students, irrespective of age, enrolled in tertiary education.	Key indicator of participation in the tertiary education system and linked to the goal of expanding tertiary education	MoE, GES	Annual	National Sex Type (Public/Private)
	5. Total enrolment in special schools	OUTPUT	The number of pupils with severe and profound disabilities enrolled in special schools that cater for their needs	Indicator of progress towards the achievement of inclusive basic education	MoE, GES	Annual	National, Regional Deprived districts Sex
	6. Gender parity index in kindergarten, primary, JHS, SHS, tertiary	OUTCOME	Ratio of male to female enrolment rates	Measures progress towards achieving gender parity in enrolment at the various	MoE, GES	Annual	National, Regional Deprived districts

Policy Objective	Indicator	Type of Indicator	Definition of Indicator	Rationale	Source	Frequency	Disaggregation
				levels of education and MDG 3 relevance. The balance of parity is 1.00			
2. Promote the teaching and learning of science, mathematics and technology at all levels	Enrolment ratio of the sciences to the humanities in tertiary institutions	OUTPUT	Ratio of number of tertiary students enrolled in science-based programmes (science, mathematics, engineering, technology) to that in the humanities	Measures progress towards the achievement of the national policy of 60:40 sciences to humanities human resource base.	MoE, GES, NCTE	Annual	National
3. Improve the quality of teaching and learning	1. Ratio of pupils to trained teachers in basic schools	INPUT	The number of pupils per trained teacher (minimum qualification of post-SHS Teacher's Diploma)	Measure of quality of teaching at basic level of education. Has positive impact on learning outcomes	MoE	Annual	National, Regional Deprived Districts
	2. Proficiency rate in English and mathematics	OUTCOME	Proportion of pupils displaying proficiency in English and mathematics in standardised tests at the Primary 3 and Primary 6.	Measure of learning outcomes/achievements in English and mathematics. Indicator of quality of education at basic level.	MoE, GES	Biennial	National, Regional Deprived districts Sex
	3. Basic Education Certificate Examination (BECE) pass rate	OUTCOME	Pupils obtaining aggregates between 6 and 25 in the BECE exams, as a percentage of all who sat for the exams	Key indicator of learning outcomes at the basic education level	MoE, GES	Annual	National, Regional Deprived districts Sex
	4. Teacher attendance rate	INPUT	The total number of days teachers were present in the classroom expressed as a proportion of the number of days teachers are expected be present in the classroom (i.e. 70 days per teacher for one semester)	An indicator of teacher time on task which is important to improving learning outcomes	MoE, GES	Annual	National, Regional Deprived districts
<b>KEY FOCUS AREA 2: HUMAN CAPITAL DEVELOPMENT, EMPLOYMENT, PRODUCTIVITY AND LABOUR RELATIONS</b>							
1. Create opportunity for accelerated job creation across all sectors	1. Unemployment rate	OUTCOME	The number of unemployed, defined as persons aged 15 years and above without work and available for employment, expressed as a percentage of the total labour force (15 years and above employed and unemployed)	Indicator of the use of human capital for national development	GSS MoELR	Annual	National, Regional, Sex Age Education
	2. Proportion of the	OUTCOME	The sum of own-account workers		GSS	Annual	National, Region,

Policy Objective	Indicator	Type of Indicator	Definition of Indicator	Rationale	Source	Frequency	Disaggregation
	population in vulnerable employment		and contributing family workers expressed as a percentage of total employed		MoELR		Sex Age Education
	3. Number of new jobs created	OUTCOME	Total number of additional jobs created in all sectors of the economy	Indicator of economic growth employment opportunities	GSS MoELR	Annual	National, Regional Sectoral
2. Enhance labour productivity across all sectors of the economy	Productivity Measurement and Enhancement Action Plan developed and implemented	PROCESS	A compilation of productivity indicators and improvement guidelines	Key to enhancing productivity of labour and employment planning	GSS MoELR	Quarterly	National
3. Enhance labour administration and promote harmonious labour relation	Proportion of industrial labour disputes settled	OUTPUT	The number of industrial conflicts/disputes settled expressed as a percentage of total conflicts/disputed recorded	Industrial harmony has impact on productivity in affected sectors of the economy	GEA,TUC GLC	Annual	National, Regional
<b>KEY FOCUS AREA 3: NUTRITION</b>							
1. Reduce under-nutrition and malnutrition-related disorders and deaths among infants and young children	1. Under-5 malnutrition rate	OUTCOME	The proportion of children under-5 years whose weight for age is less than two standard deviations from the median weight of a reference group	A general measure of the well-being of the household and an underlying cause of child death	GSS	2-3 yearly	National, Regional Sex
2. Ensure optimal nutrition among all segments of the population	1. Obesity in adult population (women age 15-49 years)	OUTPUT	Proportion of the population with body mass index of $\geq 30$	Indicator of the risk of non-communicable diseases	GSS	4-5 yearly 3-4 yearly	National
<b>FOCUS AREA 4: HEALTH</b>							
1. Bridge equity gap in access to health care	1. Number of functional Community-based Health Planning Services (CHPS) zones	OUTPUT	CHPS provides basic health services through partnership with community leaders and social groups	Important for monitoring progress towards increased geographical access to health and nutrition services	GSS	4-5-yearly	National, Regional
	2. Per capita Out Patient Department (OPD) attendance	OUTPUT	OPD attendance as percentage of population	Key to monitoring the equity gap in health infrastructure	MoH/GHS, MoF	Annually	National, Regional, District
2. Ensure sustainable financing for	1. Percentage of the population with valid NHIS card	OUTPUT	The population with valid NHIS card, expressed as a percentage of total population	Monitoring progress towards reducing financial barriers to	NHIA GHS	Annually Annually	National, Regional

Policy Objective	Indicator	Type of Indicator	Definition of Indicator	Rationale	Source	Frequency	Disaggregation
health care delivery and financial protection of the poor				health care			
3. Improve efficiency in governance and management of the health system.	1. Per capita expenditure on health	INPUT	Total public expenditure to the health sector, expressed as a percentage of total population	An indicator of investment in the health sector	MoH /GHS, MoF	Annually	National
4. Improve quality of health service delivery, including mental health services	1. Doctor-to-population ratio	OUTPUT	Number of doctors divided by the total population	Monitoring quality of health care and efficiency in the health and nutrition services	MoH/GHS	Annually	National, Regional Type of service (General/Mental)
	2. Nurse-to-population ratio	OUTPUT	Number of nurses divided by total population	Monitoring both access to tertiary health care and human resource requirements of health services	MoH/GHS	Annually	National, Regional Type of service (General/Mental)
	3. Midwife- to-women in the fertile age (WIFA) population ratio	OUTPUT	Number of midwives to population of women of fertile age	Key to measuring progress towards improved reproductive health services and ensuring favourable birth outcomes	MoH/GHS	Annually	National, Regional
	4. Number of community psychiatric nurses trained and deployed	OUTPUT	Number of nurses graduating with specialisation in community psychiatric nursing	Key input to quality mental health service delivery in communities	MoH/GHS	Annual	National Regional
5. Enhance national capacity for attainment of health-related MDGs and sustain the gains	1. Infant mortality rate	OUTCOME	Number of deaths occurring in the first year of life per 1,000 live births	A measure of general well-being of the household. Specifically linked to the effectiveness of child health interventions and determining the status of MDG 4	MoH/GHS GSS	Annual 4-5 yearly	National National/Regional Residence
	2. Under-5 mortality rate	OUTCOME	Number of deaths occurring in children under 5 years per 1,000 live births	Key indicator of child survival	MoH/GHS GSS	Annual 4-5 yearly	National National/Regional Residence

Policy Objective	Indicator	Type of Indicator	Definition of Indicator	Rationale	Source	Frequency	Disaggregation
	3. Percentage of children immunised (Penta 3)	OUTPUT	Proportion of children 12-23 months fully immunised by 12 months of age	Important indicator for measuring child health and linked to MDG 4.	MoH/GHS GSS	Annual 2-3 yearly	National, Regional National, Regional
	4. Institutional maternal mortality ratio	OUTCOME	Maternal deaths recorded in public health institutions per 100,000 live births	Proxy indicator for MDG 5	MoH/GHS	Annual	National\ Regional
	5. Percent of supervised deliveries	OUTPUT	Proportion of pregnant women who received skilled assistance during child birth from a trained health professional	Key to improving maternal and child health outcomes and proxy indicator for MDG 5	MoH/GHS GSS	Annual 2-3 yearly	National Regional
	6. Institutional under-5 malaria case fatality rate	OUTCOME	Number of deaths to children under-5 admitted to public health institutions with malaria per 100 admissions	Important indicator of malaria case management and MDG	MoH/GHS	Annual	National
	7. Tuberculosis treatment success rate	OUTCOME	The number of TB cases treated successfully under DOTS as a percentage of total recorded TB cases	Indicator of progress towards controlling the spread of TB	MoH/GHS	Bi-annual	National, Regional Sex
<b>KEY FOCUS AREA 5: HIV AND AIDS/STI</b>							
1. Ensure the reduction of new HIV and AIDS/STI/ TB infections, especially among the vulnerable	HIV prevalence among pregnant women 15-24 years	OUTCOME	Percentage of blood samples taken from pregnant women in the age group 15-24 attending ANC clinics designated as sentinel surveillance sites that test positive for HIV	Gives a fairly good estimate of relatively recent trends in HIV infection in locations where the epidemic is heterosexually driven; key to monitoring the status of MDG 6	MoH/NACP/GAC	Annually	National, Regional Sex
	2.HIV Prevalence rate	OUTCOME	Proportion of people in the population who tested positive for HIV	Key measure of progress towards reduced spread of HIV	MoH/GHS NACP	Annually	National, Regional Sex
2. Improve HIV and AIDS/STI case management	1. HIV clients receiving ARV therapy	OUTPUT	Total number of PLHIV who received ART combination therapy per year	Important to improve the quality of life among PLHIV leading to improved longevity	MoH/GHS NACP	Annually	National, Regional Sex
	2. Proportion of infected pregnant women who received ARVs for PMTCT	OUTPUT	Number of pregnant women receiving anti-retroviral prophylaxis for HIV expressed as a percentage of all pregnant women with HIV	Key indicator of progress towards reducing mother-to-child HIV transmission	MoH/GHS NACP	Annually	National, Regional Sex

Policy Objective	Indicator	Type of Indicator	Definition of Indicator	Rationale	Source	Frequency	Disaggregation
<b>KEY FOCUS AREA 6: SPORTS DEVELOPMENT</b>							
1. Provide adequate and disability-friendly infrastructure in communities and schools	1. Increase in number of sports infrastructure rehabilitated/constructed	OUTPUT	Total stock of national sports infrastructure	Key to monitoring access to sports facilities	MoYS	Annual	National Regional District
	2. Percentage of GDP allocated to sports	OUTCOME	Value of sports expressed as a percentage of gross domestic product	Key measure of the contribution of sports to national development	MoYS MoF	Annual	National
	3. Number of international and sub-regional competitive sporting events in which Ghana participated	OUTPUT	Total number of international, regional and continental competitive sporting events in which sport associations and clubs participated in on behalf of the country		MoYS	Annual	National Regional District
<b>KEY FOCUS AREA 7: THE YOUTH</b>							
1. Ensure integration of youth concerns into national development planning processes and programmes	1. Youth unemployment rate	OUTCOME	Number of unemployed youth divided by youth labour force	Important for tracking progress towards reducing youth unemployment	MoELR GSS	Annual	National
	2. Number of new jobs generated through special initiatives such as Youth Enterprise Support (YES) Fund and Youth Employment Agency (YEA)	OUTPUT	Total number of additional permanent jobs created in the economy by special initiatives	Indicator of employment opportunities available to the youth	MoELR GSS	Annual	National
2. Ensure the provision of adequate training and skills development in line with global trends	1. Number of young people provided with employable skills in TVET institutions	OUTPUT	Number of youth graduated from TVET institutions in a given year	Key to reducing youth unemployment	NVTI COTVET	Annual	National Sex
<b>KEY FOCUS AREA 8: SOCIAL DEVELOPMENT AND SOCIAL PROTECTION</b>							
1. Develop a comprehensive social development policy framework	A National Social Protection Policy developed and implemented	PROCESS	Existence of policy on institutional framework for the coordination of all social protection interventions/programmes	Necessary for consolidating and harmonising fragmented social intervention programmes	MoGCSP,	Quarterly	National
2. Make social protection more	Single register for social protection/activities	PROCESS	Single register updated and published for use of common	Facilitate more effective targeting of	MoGCSP, MoF MLGRD, MMDAs	Quarterly	National

Policy Objective	Indicator	Type of Indicator	Definition of Indicator	Rationale	Source	Frequency	Disaggregation
effective in targeting the poor and vulnerable	published		targeting mechanism by MMDAs	social protection interventions			
3. Enhance funding and cost-effectiveness of social protection delivery	1. Social protection-related expenditure as a percentage of GDP	INPUT	Social protection expenditure as a percentage of total value of goods and services	Indicator of national commitment to social protection issues	MoF MoGCSP	Annual	National
	2. Number of households benefiting from LEAP	OUTPUT	Total number of households that receive cash grants from LEAP	Key to monitoring progress towards social protection of vulnerable groups	MoF MoGCSP	Annual	National
<b>KEY FOCUS AREA 9: THE AGED</b>							
1. Accelerate the implementation of social and health interventions targeting the aged	1. Number and percentage of the aged with NHIS card	OUTPUT	Persons 70 years and older registered under the National Health Insurance Scheme	Ensures social inclusion and state support for the aged population	MoGCSP NHIA	Annual	National Regional
	2. Proportion of the aged covered by LEAP	OUTPUT	Number of persons 65 years and older expressed as percentage of all persons receiving LEAP grants	Indicator of progress towards improving the financial situation of the aged	MoGCSP	Annual	National Regional
<b>KEY FOCUS AREA 10: CHILD DEVELOPMENT AND PROTECTION</b>							
1. Protect children against violence, abuse and exploitation	1. Incidence of child abuse	OUTPUT	Number of children who become victims of violence and abuse (defilement, assault) in a given year	Important for monitoring progress towards child protection.	MoGCSP	Annual	National Regional
	2. Incidence of hazardous child labour	OUTPUT	The proportion of children 5-17 years engaged in hazardous work	Indicator of child protection with implications for a child's overall development	MoGCSP	Annual	National Regional
<b>KEY FOCUS AREA 11: DISABILITY</b>							
1. Ensure effective appreciation of and inclusion of disability issues	1. The Legislative Instrument of the Disability Act 715 and the UNCRPD passed and implemented	PROCESS	Existence of legal framework for the implementation of the Persons with Disability Act, 715	Key indicator for monitoring the effectiveness of implementation of policies on PWDs	MoGCSP	Annual	National Regional District
	2. Amount of DACF transferred for PWDs	OUTPUT	Amount of District Assembly Common Fund (in GH¢) targeting PWDs		MoGCSP	Annual	National Regional District
<b>KEY FOCUS AREA 12: POPULATION MANAGEMENT AND MIGRATION FOR NATIONAL DEVELOPMENT</b>							
1. Integrate population	1. Number and percentage of districts	OUTPUT	The number of districts and MDAs utilising population data	Key to monitoring the use of population data	NDPC NPC	Annual	National

Policy Objective	Indicator	Type of Indicator	Definition of Indicator	Rationale	Source	Frequency	Disaggregation
variables in all aspects of development planning at all levels	and MDAs integrating population variables in their development plans		in their development plans	in development planning	MLGRD		
2. Reinforce family planning as a priority in national development	1. Population growth rate	OUTCOME	Annual change in population Size	Implication for dependency burden and provision of social services	GSS NPC\ RIPS	Annual	National, Regional
	2. Contraceptive prevalence rate (modern methods)	OUTPUT	Proportion of all women currently using modern contraceptives	Significant indicator of progress towards fertility control	MoH/GSS, NPC RIPS	4-5-yearly Annual estimates	National Regional
3. Promote re-distribution of population between urban and rural areas	1. Share of remittances in GDP	OUTCOME	Total annual receipts of remittances expressed as a percentage of GDP	Significant indicator of the contribution of migration to national development	GSS, NPC, RIPS MoF	Annual	National
<b>KEY FOCUS AREA 13: POVERTY REDUCTION AND INCOME INEQUALITIES</b>							
1. Develop targeted social and economic interventions for vulnerable and marginalised groups	1. Incidence of poverty	OUTCOME	The proportion of the population that is poor (below poverty line of GH¢1,314)	Important for monitoring progress in poverty reduction	GSS	4-5 yearly	National Sex
	2. Incidence of extreme poverty	OUTCOME	Proportion of the adults living on GH¢792.05 per year and unable to meet their basic nutritional requirements even if they devoted their entire consumption budget to food	Key indicator for tracking progress in reducing poverty among the poorest of the poor	GSS	4-5 yearly	National Sex
	3. Income Distribution Index (Gini Index)	OUTCOME	Measures the extent to which the distribution of income or consumption expenditure among individuals or households in an economy deviates from perfectly equal distribution. A Gini Index of 0 represents perfect equality, while an index of 1 implies perfect inequality	An important indicator of the distribution of welfare and the extent to which economic growth is pro-poor	GSS	4-5 yearly	National

## 6.2 PERFORMANCE INDICATORS WITH BASELINE AND TARGETS

Indicator	Type of Indicator	Definition of Indicator	Baseline data (2013)	Targets			
				2014	2015	2016	2017
<b>FOCUS AREA 1: EDUCATION</b>							
1. Gross enrolment ratio in kindergarten, primary, JHS, SHS	OUTPUT	Ratio of the number of pupils/students at a given level of schooling regardless of age to the number of children in the relevant age group	KG-113.8% Primary-105.0% JHS-82.2% SHS-36.8	NA	NA	NA	NA
2. Net enrolment ratio in kindergarten, primary, JHS	OUTPUT	The ratio of the number of appropriately aged children enrolled in basic schools to the number of children in the relevant age group	KG-74.8% Primary-84.1% JHS-47.8%	KG-78.8% Primary-88.1% JHS-50.8%	KG-80.8% Primary-90.1% JHS-52.8%	KG-82.8% Primary-92.1% JHS-54.8%	KG-84.8% Primary-92.1% JHS-56.8%
3. Completion rate in Primary 6, JHS3, SHS3	OUTCOME	Total number of pupils/students enrolled in the last grade of a given level of education (Primary 6, JHS 3, SHS 3), regardless of age, expressed as a percentage of the total population of the theoretical entrance age to the last grade of that level of education	Primary 6-112.2% JHS 3-70.1% SHS 3- 34.3%	Primary 6-122.4% JHS 3-76.1% SHS 3- 38.3%	Primary 6-132.4% JHS 3-79.1% SHS 3-42.3%	Primary 6-142.4% JHS 3-81.1% SHS 3- 46.3%	Primary 6-152.4% JHS 3-83.1% SHS 3- 50.3%
4. Total enrolment in tertiary institutions	OUTPUT	The total number of students, irrespective of age, enrolled in tertiary education	Public-221,632 Private-61,874	Public-n/a Private-n/a	Public-n/a Private-n/a	Public-n/a Private-n/a	Public-n/a Private-n/a
5. Total enrolment in special schools	OUTPUT	The number of pupils with severe and profound disabilities enrolled in special schools that cater for their needs	6,180	NA	NA	NA	NA
6. Gender parity index in kindergarten, primary, JHS, SHS, tertiary	OUTCOME	Ratio of male-to-female enrolment rates	KG-1.03 Primary-0.99 JHS-0.93 SHS-0.86	KG-1.05 Primary-0.99 JHS-0.93 SHS-0.86	KG-1.07 Primary-0.99 JHS-0.93 SHS-0.86	KG-1.08 Primary-0.99 JHS-0.93 SHS-0.86	KG-1.09 Primary-0.99 JHS-0.93 SHS-0.86
1. Enrolment ratio of the sciences to the humanities in tertiary institutions	OUTPUT	Ratio of tertiary students enrolled in science-based programmes (science, mathematics, engineering, technology) to those in the humanities	38.4: 61.6				60:40
5. Pupils-to-trained teacher ratio in basic schools	INPUT	The number of pupils per trained teacher (minimum qualification of post-SHS Teacher's Diploma)	KG-72:1 Primary-48:1 JHS-69:1	KG-62:1 Primary-45:1 JHS-19:1	KG-52:1 Primary-42:1 JHS-19:1	KG-42:1 Primary-40:1 JHS-19:1	KG-32:1 Primary-39:1 JHS-19:1
6. Proficiency rate in English and mathematics	OUTCOME	Proportion of pupils displaying proficiency in English and mathematics in standardised tests at the Primary 3 and Primary 6 levels	P3 English - 28% P3 Maths - 22% P6 English -	NA	NA	NA	NA

Indicator	Type of Indicator	Definition of Indicator	Baseline data (2013)	Targets			
				2014	2015	2016	2017
			39% P6 Maths - 10%				
7. Basic Education Certificate Examination (BECE) pass rate	OUTCOME	Pupils obtaining aggregates between 6 and 25 in the BECE exams, as a percentage of all who sat the exams	NA	NA	NA	NA	NA
8. Teacher attendance rate	INPUT	The total number of days teachers were present in the classroom expressed as a proportion of the number of days teachers are expected be present in the classroom (i.e. 70 days per teacher for one semester)	NA	NA	NA	NA	NA
<b>KEY FOCUS AREA 2: HUMAN CAPITAL DEVELOPMENT, EMPLOYMENT, PRODUCTIVITY AND LABOUR RELATIONS</b>							
1. Unemployment rate	OUTCOME	The number of unemployed, defined as persons aged 15 years and above without work and available for employment, expressed as a percentage of the total labour force (15 years and above employed and unemployed)	5.2%	NA	NA	NA	NA
2. Proportion of the population in vulnerable employment	OUTCOME	The sum of own-account workers and contributing family workers expressed as a percentage of total employed	68.7%	NA	NA	NA	NA
3. Number of new jobs created	OUTCOME	Total number of additional jobs created in all sectors of the economy	NA	NA	NA	NA	NA
1. Productivity measurement and enhancement action plan developed and implemented	PROCESS	A compilation of productivity indicators and improvement guidelines	NA	NA	NA	NA	NA
1. Proportion of industrial labour disputes settled	OUTPUT	The number of industrial conflicts/disputes settled, expressed as a percentage of total conflicts/disputes recorded	56.0%	58.2%	65%	70%	75%
<b>KEY FOCUS AREA 3: NUTRITION</b>							
1. Under-5 malnutrition rate	OUTCOME	The proportion of children under-5 years whose weight for age is less than two standard deviations from the median weight of a reference group	22.7% (MICS 2011)	<16%	NA	NA	NA
2. Obesity in adult population (women aged 15-49 years)	OUTPUT	Proportion of the population with body mass index of $\geq 30$	9.3% (DHS 2008)	NA	NA	NA	NA
<b>FOCUS AREA 4: HEALTH</b>							
1. Number of functional	OUTPUT	CHPS provides basic health services	2,315	2,450	2,595	2,753	2,918

Indicator	Type of Indicator	Definition of Indicator	Baseline data (2013)	Targets			
				2014	2015	2016	2017
Community-based Health Planning Services (CHPS) zones		through partnership with community leaders and social groups					
2. Per capita OPD attendance	OUTPUT	Out-patient Department (OPD) attendance as a percentage of the total population	1.16	1.17	1.21	1.27	1.3
3. Percentage share of the population with valid NHIS card	OUTPUT	Population with valid NHIS card, expressed as a percentage of the total population	37.05	>39%	>40%	>41.5	>43%
4. Per capita expenditure on health	INPUT	Total public expenditure allocated to the health sector, expressed as a percentage of total population	47.1	>44	>44	>45	>45
5. Doctor-to-population ratio	OUTPUT	Number of doctors divided by the total population	1:10,170	1:10,000	1:9,900	1:9,750	1:9,500
6. Nurse-to-population ratio	OUTPUT	Number of nurses divided by the total population	1:1084	1:<1,000	1:<1,000	1:<1,000	1:<1,000
7. Midwife-to-women in the fertile age (WIFA) population ratio	OUTPUT	Number of midwives to population	1:1,525	1:1,400	1:1,350	1:1,300	1:1,250
8. Number of community psychiatric nurses trained and deployed	OUTPUT	Number of nurses graduating with specialisation in community psychiatric nursing	NA	NA	NA	NA	NA
9. Infant mortality rate	OUTCOME	Number of deaths occurring in the first year of life per 1,000 live births	53 (MICS 2011)	<50	NA	NA	NA
10. Under-5 mortality rate	OUTCOME	Number of deaths occurring in children under-5 years per 1,000 live births	80 (MICS 2011)	<75	NA	NA	NA
11. Percent of children immunised (Penta 3)	OUTPUT	Proportion of children 12-23 months fully immunised by 12 months of age	86.00%	>88%	>90%	>90%	>90%
12. Maternal mortality ratio	OUTCOME	Maternal deaths recorded per 100,000 live births	NA	<300	NA	NA	NA
13. Institutional maternal mortality ratio	OUTCOME	Maternal deaths recorded in public health institutions per 100,000 live births	155	<145	<140	<137	<135
14. Percent of supervised deliveries	OUTPUT	Proportion of pregnant women who received skilled assistance during childbirth from a trained health professional	55%	>58%	>60%	>62%	>65%
15. Institutional under-5 malaria case fatality rate	OUTCOME	Number of deaths of children under-5 admitted to public health institutions with malaria per 100 admissions	6.7	<6.0	<5.7	<5.3	<5.0
16. Tuberculosis treatment success rate	OUTCOME	Proportion of TB cases treated successfully under DOTS	87%	>88%	>88%	>88%	>88%

Indicator	Type of Indicator	Definition of Indicator	Baseline data (2013)	Targets			
				2014	2015	2016	2017
<b>KEY FOCUS AREA 5: HIV &amp; AIDS AND STIs</b>							
1.HIV prevalence among pregnant women 15-24 years	OUTCOME	Percentage of blood samples taken from pregnant women in the age group 15-24 attending ANC clinics designated as sentinel surveillance sites that test positive for HIV	1.2%	<1.1%	<1.0%	<0.9%	<0.8%
2.HIV prevalence rate	OUTCOME	Proportion of people in the population who tested positive for HIV	1.3%	<1.1%	<1.0%	<0.9%	<0.8%
3. HIV clients receiving ARV therapy	OUTPUT	Total number of PLHIV who received ART combination therapy per year	32.9%	>40%	>44%	>48%	>50%
4. Proportion of HIV-positive pregnant women who received ARVs for PMTCT	OUTPUT	Number of pregnant women receiving anti-retroviral prophylaxis for HIV expressed as a percentage of all HIV-positive pregnant women	75,762	NA	NA	NA	NA
<b>KEY FOCUS AREA 6: SPORTS DEVELOPMENT</b>							
1. Number of sporting facilities and infrastructure rehabilitated/ constructed	OUTPUT	Increase in total stock of national sport infrastructure	NA	NA	NA	NA	NA
2. Percent of GDP attributed to sports	OUTCOME	Value of sports expressed as a percentage of GDP	NA	NA	NA	NA	NA
3. Number of international and sub-regional competitive sporting events in which Ghana participated	OUTPUT	The total number of international, regional and continental competitive sporting events in which sport associations and clubs participated in on behalf of the country	23 events were attended by local associations and 74 medals were won	25	25	25	25
<b>KEY FOCUS AREA 7: THE YOUTH DEVELOPMENT</b>							
1. Youth unemployment rate	OUTCOME	Number of unemployed youth divided by youth labour force	5.7% (GLSS 6)	>5.7%	NA	NA	NA
2. Number of new jobs generated under special initiatives such as Youth Enterprise Support (YES) Fund and Youth Employment Agency (YEA)	OUTPUT	Total number of additional permanent jobs created in the economy by special initiatives	NA	NA	NA	NA	NA
3. Number of young people provided with employable skills in TVET institutions	OUTPUT	Number of youth graduating from TVET institutions in a given year	2,188	2,407	2,647	2,911	3,202

Indicator	Type of Indicator	Definition of Indicator	Baseline data (2013)	Targets			
				2014	2015	2016	2017
<b>KEY FOCUS AREA 8: SOCIAL DEVELOPMENT AND SOCIAL PROTECTION</b>							
1. A National Social Protection Policy developed and implemented	PROCESS	Existence of policy on institutional framework for the coordination of all social protection interventions/programmes	Lack of Social Protection Policy	Draft National Protection Policy developed (SP)	Final National Protection Policy (SP) and Implementation Plan approved	National Protection Policy (SP) implemented	National Protection Policy (SP) implemented
2. Single register for social protection/activities published	PROCESS	Single register updated and published for use of common targeting mechanism by MMDAs	National Household Registry (Single Registry) developed	National Targeting Unit established	National Household Registry (Single Registry) in operation	National Household Registry (Single Registry) in operation	National Household Registry (Single Registry) in operation
3. Social protection-related expenditure as a percentage of GDP	INPUT	Social protection expenditure as a percentage of total national expenditure	0.05%	≥5%	≥5%	≥5%	≥5%
4. Number of households benefiting from LEAP	OUTPUT	Total number of households that receive cash grants from LEAP	73,134	133,000	183,000	233,000	283,000
<b>KEY FOCUS AREA 9: THE AGED</b>							
1. Number and percentage of the aged with NHIS card	OUTPUT	Persons 70 years and older registered under the National Health Insurance Scheme	381,511	NA	NA	NA	NA
2. Proportion of the aged covered by LEAP	OUTPUT	Number of persons 65 years and older expressed as a percentage of all persons receiving LEAP grant	NA	NA	NA	NA	NA
<b>KEY FOCUS AREA 10: CHILD DEVELOPMENT AND PROTECTION</b>							
1. Incidence of child abuse	OUTPUT	Number of children who become victims of violence and abuse (defilement, assault) in a specific year	1,739	50% reduction	30% reduction	20% reduction	10% reduction
2. Incidence of hazardous child labour	OUTPUT	The proportion of children 5-17 years engaged in hazardous work	NA	NA	NA	NA	NA
<b>KEY FOCUS AREA 11: DISABILITY</b>							
1. The Legislative Instrument of the Disability Act 715 and the UNCRPD passed and implemented	PROCESS	Existence of legal framework for the implementation of the Persons with Disability Act, 715	Process initiated to pass Legislative Instrument	Process to pass Legislative Instrument continued	Legislative Instrument of the Disability Act 715 and the UNCRPD passed	Implementation of Legislative Instrument of the Disability Act 715 and the UNCRPD commence	Implementation of Legislative Instrument of the Disability Act 715 and the UNCRPD continue
2. Amount of DACF transferred for PWDs	OUTPUT	Amount (in GH¢) of District Assembly Common Fund targeting PWDs	8,113,387	10,000,000	11,000,000	12,000,000	13,000,000

Indicator	Type of Indicator	Definition of Indicator	Baseline data (2013)	Targets			
				2014	2015	2016	2017
<b>KEY FOCUS AREA 12: POPULATION MANAGEMENT AND MIGRATION FOR NATIONAL DEVELOPMENT</b>							
1. Number and percentage of districts and MDAs integrating population variables in their development plans	OUTPUT	The number of districts and MDAs utilising population data in their development plans	NA	NA	NA	NA	NA
2. Population growth rate	OUTCOME	Annual change in population Size	1.5% by 2020	NA	NA	NA	NA
3. Contraceptive prevalence rate (modern methods)	OUTPUT	Proportion of all women currently using modern contraceptives	25.8% (NPC 2013)	> 28.5%	> 28.5%	> 28.5%	> 28.5%
4. Share of remittances in GDP	OUTCOME	Total annual receipt of remittances expressed as a percentage of GDP	4.4%	NA	NA	NA	NA
<b>KEY FOCUS AREA 13: POVERTY AND INCOME INEQUALITIES</b>							
1. Incidence of poverty	OUTCOME	The proportion of the population that is poor (below poverty line of GH¢1,314)	24.2%	23.1%	21.9%	20.4%	18.5%
2. Incidence of extreme poverty	OUTCOME	Proportion of the adults living on GH¢792.05 per year and who cannot meet their basic nutritional requirements even if they devoted their entire consumption budget to food	8.4%	7.8%	7.2%	6.6%	6.0%
3. Income Distribution Index (Gini Index)	OUTCOME	Measures the extent to which the distribution of income or consumption expenditure among individuals or households within an economy deviates from perfectly equal distribution. A Gini Index of 0 represents perfect equality, while an index of 1 implies perfect inequality	42.3%	≤42.3%	≤42.3%	≤42.3%	≤42.3%

# 7

## **TRANSPARENT, RESPONSIVE AND ACCOUNTABLE GOVERNANCE**

## 7.0 TRANSPARENT, RESPONSIVE AND ACCOUNTABLE GOVERNANCE

### 7.1 SUMMARY PERFORMANCE INDICATORS AND THEIR DEFINITIONS

Indicator	Type of Indicator	Definition of Indicator	Rationale	Source	Frequency	Disaggregation	
<b>FOCUS AREA 1: DEEPENING THE PRACTICE OF DEMOCRACY AND INSTITUTIONAL REFORMS</b>							
1. Improve the balance among the arms of government, governance institutions and their functioning	1. The revised national Constitution	OUTCOME	A revised 1992 Republic of Ghana Constitution that has gone through the necessary approval by Parliament and referendums, and assented to by the President	Measures the extent to which the appropriate legal basis is created for improved governance and accelerated socio-economic transformation of the country	Parliament, Constitutional Review Implementation Committee (CRIC)	Annual	National
	2. The total number of papers laid before and considered by Parliament	OUTPUT	The number of Bills, Legislative Instruments, reports and international and national agreements laid before and considered by Parliament in a given year	Measures the extent of parliamentary democracy	Parliament	Annual	National
	3. The percentage change of budgetary resources allocated to Parliament	INPUT	The change in amount of budgetary resources (goods, services, and capital/assets) allocated to Parliament, expressed as a percentage of the preceding year's budgetary resource allocation	A measure of resource parity between the executive and Parliament; it is a proxy for independence of Parliament	Parliament, NCCE, NMC, CHRAJ, EC	Annual	National, Sector, Budgetary allocation, Budgetary releases
	4. The percentage change of budgetary resources allocated to independent governance institutions (IGIs)	INPUT	The change in amount of budgetary resources (approved and actual releases) allocated to independent governance (i.e. CHRAJ, NCCE, EC, NMC and judiciary) institutions expressed as a percentage of previous year's allocation	A measure of resource parity between the executive and IGIs; it is a proxy for independence from executive influence	NCCE, NMC, CHRAJ, EC, Judiciary	Annual	National, Sector, Budgetary allocation, Budgetary releases
2. Enhance platforms for engagement with civil society and private sector and improve responsiveness of governance	1. CSOs participation in policy formulation and the development process	PROCESS	Inventory of national development processes (such as national policy formulation, implementation, monitoring and evaluation; budgetary process; national dialogues, etc.) that CSOs, private sector and think tanks are involved in	A proxy for broadening of the policy space and ownership of the national development process	NDPC, MoF, CSOs, APRM	Annual	National

Indicator	Type of Indicator	Definition of Indicator	Rationale	Source	Frequency	Disaggregation	
institutions		during the year, as well as a description of the nature of involvement					
	2. National Economic Forum organised	OUTPUT	Inventory of activities related to National Economic Forum, including meetings of implementation committee, preparation of implementation reports, organisation of annual stakeholders forum	A proxy for widening policy space and inclusiveness in national policy-making processes	NDPC, OoP	Annual	National
3. Ensure an inclusive and equitable political system	1. Operational Election Fund established	PROCESS	Description of actions taken, including legal processes, to ensure that the Election Fund is established and made operational	A proxy for public commitment to strengthening multi-party democracy	EC, Parliament, IEA	One-time	National
4. Improve the transparency and integrity of the electoral process	1. Percentage of decisions generated through IPAC consultations implemented by the EC	INPUT	The number of decisions agreed at IPAC implemented by EC, expressed as a percentage of total IPAC decisions	A measure of increased space in the electoral process for political party participation	EC	Annual	National
	2. Public perception of the performance of the EC (survey)	IMPACT	Percentage of population that believes the EC is independent and transparent	A measure of public confidence in the work on the EC	NCCE	Every 2 years	National
5. Strengthen and promote the culture of rights and responsibilities	3. Percentage of citizenry who exercised their right to vote in presidential, parliamentary and district assembly elections	OUTPUT	The number of voters on the electoral register who voted during presidential, parliamentary and district assembly elections, expressed as a percentage of total voter population	A proxy for citizenry who are aware of their constitutional rights and are exercising them	EC	Every election cycle	National
<b>FOCUS AREA 2: LOCAL GOVERNANCE AND DECENTRALISATION</b>							
1. Ensure effective implementation of the decentralisation policy and programmes	1. Size of MMDA personnel in relation to central government	OUTPUT	The total number of employees in all MMDAs, expressed as a percentage of the total number of personnel on the government payroll	Determines the changing administrative capacity of the MMDAs	MoF, CAGD, MLGRD, RCC, LGS, MMDAs,	Annual	National, Sectoral, MMDA
2. Ensure effective and efficient resource mobilisation, internal revenue	1. The share of MMDA revenue in total government receipts	INPUT	Total MMDA revenue (including IGF, DACF, GoG transfers, HIPC transfers and donor funds) expressed as a percentage of total national	Measures the trend in fiscal independence of the MMDAs and how resources are shifting from the centre to the	MLGRD, DACF, MoF, NDPC	Annual	National, Sectoral, MMDA

Indicator	Type of Indicator	Definition of Indicator	Rationale	Source	Frequency	Disaggregation	
generation and resource management		revenue	subnational level				
3. Integrate and institutionalise district-level planning and budgeting through participatory processes at all levels	1. Share of central government transfers to MMDAs in total national budget	INPUT	The total amount of DACF, HIPC and GoG funding to MMDAs, expressed as a percentage of the annual national total revenue, excluding grants	Proxy for fiscal decentralisation, and indicates how resources are shifting from the sector to the subnational level	MMDAs, MLGRD, ILGS, LGS, NDPC	Annual	National, Regional
<b>FOCUS AREA 3: SPECIAL DEVELOPMENT ZONES</b>							
1. Reduce spatial development disparities among different ecological zones across the country	1. Number of special development initiatives/mechanisms established	PROCESS	The number of special development authorities/initiatives created by the government to address development challenges of particular areas	Indicates the number of special purpose vehicles for addressing spatial disparities in development	NDPC, MLGRD, OoP, Parliament, MMDAs	Annual	National
	2. Proportion of national budget allocated to special development initiatives	INPUT	Total amount allocated to special development initiatives including MiDA, SADA etc., expressed as a percentage of the total national budget	Measure of resources made available for the development of special areas	OoP, MOF, MLGRD, NDPC, MMDAs	Annual	National
<b>FOCUS AREA 4: PUBLIC POLICY DEVELOPMENT AND MANAGEMENT</b>							
1. Strengthen policy formulation, development planning, and M&E processes for equitable and balanced spatial and socio-economic development	1. LIs on NDPC Act 479 (1994) and Planning System Act 480 (1994) passed by Parliament	PROCESS	The enactment of LIs to operationalise Act 479 and Act 480 and to guide MDAs and MMDAs in national development	Measures strengthening and institutionalisation of planning, monitoring and evaluation processes at all levels	NDPC, Parliament, MLGRD	One-time	National
	2. National Long-Term Development Plan prepared	PROCESS	Completion of the preparation of a Long-Term Development Plan to form the basis for future medium-term policy frameworks and to guide successive governments	This is a measure of policy consistency and stability in policy formulation and implementation	NDPC, MDAs, OoP, Parliament, MMDAs	One-time	National
2. Promote inter- and intra-agency linkages of technology-based information	1. Number of public institutions on NITA platform	OUTPUT	Total number of public institutions on the NITA platform	Measures progress of effort to place all state institutions on the internet	MoI/NITA	Annually	National

Indicator	Type of Indicator	Definition of Indicator	Rationale	Source	Frequency	Disaggregation	
systems							
<b>FOCUS AREA 5: PUBLIC SECTOR REFORMS</b>							
1. Enhance supervision and productivity in the public service	1. Integrated public service-wide Human Resource Management Information System established	PROCESS	Description of actions taken to ensure the completion of a functional public service-wide human resource management information system	This measures the national capacity to manage the public service, including the skill set required for effective civil and public service operation	OHCS, PSC, OoP	Annual	National
	2. The proportion of personnel with the right skill set in the public service	OUTPUT	The number of personnel occupying positions in the public service with requisite expertise, expressed as a percentage of total number of public servants	Measure of the existence of the right capacity in place in the civil service for effective delivery of quality services	OHCS, PSC, OoP	Annual	National, Sectoral
	3. Public perception of public service delivery and productivity	IMPACT	The proportion of general public that believes in the quality of service delivered by the public service.	It measures confidence of the public in the public service	OHCS, OoP, MDAs	Annual	National, Sectoral
<b>FOCUS AREA 6: ENHANCING DEVELOPMENT COMMUNICATION</b>							
1. Improve transparency and access to public information	Level of press freedom (Press Freedom Index – PFI)	OUTCOME	A composite index of every kind of violation directly affecting journalists including murder, imprisonment, physical attacks and threats, and news media censorship, confiscation of newspaper issues, searches and harassment.	Measures the state of press freedom and reflects the degree of freedom that journalists and news organisations enjoy, and the effort made by authorities to respect and ensure respect for this freedom.	Mo Ibrahim Foundation, National Media Commission (NMC), Ghana Journalists Association, Reporters without Borders	Annual	National
2. Enhance development communication across the public sector and policy cycle	Number of National Policy Dialogues	OUTPUT	The number of Meet-the-Press series, budget dissemination workshops, town hall meetings, etc. organized	Measure of citizen’s participation in national policy dialogues and policy formulation	MoC, OoP, NDPC, MoF, MDAs, MMDAs	Annual	National, Sectoral, MMDAs
3. Promote social accountability in the public policy cycle	Scores on Public Expenditure Tracking Survey	OUTPUT	Grading of efficiency of utilisation of public resources in selected social sectors (e.g. education and health) based on discrepancies in resource flows	Types and use of tools that promote citizen input into public policy and public expenditure management	NDPC, MoF, MoC, NCCE	Annual	National

Indicator	Type of Indicator	Definition of Indicator	Rationale	Source	Frequency	Disaggregation	
		from central allocation to receipt by service providers such as schools, clinics and hospitals					
<b>FOCUS AREA 7: GENDER EQUITY AND WOMEN'S EMPOWERMENT</b>							
1. Promote gender equity in political, social and economic development systems and outcomes	1. Percentage change in women in public life (i.e. administration and political leadership)	OUTPUT	Change in number of women in administration and political leadership including, Ministers of State, Deputy Ministers of State, MPs, MMDCEs, Chief Directors, Members of District Assemblies, etc., expressed as a percentage of respective totals	To measure gender equality and women's empowerment, as well as women's participation in decision making	MoGCSP, MLGRD, DOVVSU	Annual	National, Sectoral, District, MMDAs, Parliament, Ministers of State
	2. Number of MDAs and MMDAs implementing gender-responsive budgets	OUTCOME	Number of MDAs and MMDAs that have adopted and incorporated the relevant gender dimensions in the preparation and implementation of their respective annual budgets	Measures the extent of mainstreaming of gender issues in policy planning implementation, monitoring and evaluation.	MoGCSP, NDPC, MoF	Annual	National
2. Promote women's access to economic opportunity and resources, including property	Proportion of women with access to institutional credit	OUTCOME	Number of women with institutional credit, including from MASLOC and other micro-finance schemes, expressed as a percentage of total beneficiaries	Measures the extent of women's access to micro-finance, as well as the empowerment of women in the lower income bracket	MASLOC, MoGCSP, GHAMFIN	Annual	National, Regional
<b>FOCUS AREA 8: CORRUPTION AND ECONOMIC CRIMES</b>							
1. Promote effective and efficient anti-corruption systems	1. Corruption Perception Index	Outcome	Composite index of corruption-related data which focuses on corruption in the public sector including the abuse of public office for private gain (i.e. bribes taken by public officials in public procurement)	Determines the public view of decline or increase in corruption in the economy	Transparency International (TI), EOCO, Ghana Audit Service	Annual	National
	2. Number of corruption cases recorded by state anti-corruption institutions including CHRAJ and EOCO	Output	Number of corruption-related cases received by CHRAJ and EOCO	Measures change in number of reported cases of corruption	CHRAJ, EOCO	Annual	National, Sectoral

Indicator	Type of Indicator	Definition of Indicator	Rationale	Source	Frequency	Disaggregation	
3. Number of corruption cases identified by Public Accounts Committee and sanctioned	Output	Number of institutions and individuals who are indicted by the report of the Public Accounts Committee (PAC), and sanctioned accordingly	Measure of accountability and transparency in the use of public resources	PAC – Parliament	Annual	National	
<b>FOCUS AREA 9: RULE OF LAW AND ACCESS TO JUSTICE</b>							
1. Improve access to affordable and timely justice	1. Number of lawyers called to the Bar	OUTPUT	Total number of new lawyers called to the Bar on an annual basis	Determines the capacity of the judicial system to administer justice	Judicial Service, MoJ	Annual	National, Gender
	2. Percentage of courts computerised	OUTPUT	Number of courts computerised, expressed as a percentage of all courts	Measure of speedy delivery of justice and efficiency in justice administration	Judicial Service, MoJ	Annual	National, Regional
	3. Number of days for resolving dispute	OUTCOME	The average number of days taken for a court to pass judgement on a dispute	Measure of speedy delivery of justice and the efficiency in justice administration	Judicial Service, MoJ	Annual	National, Regional
	4. Number of cases recorded and settled through Alternative Dispute Resolution (ADR)	OUTCOME	Total number of cases recorded and settled through ADR	Assesses the extent to which alternative dispute mechanisms are being used to settle dispute and reducing the excess burden on court system	ADR Secretariat, Judicial Service, MoJ	Annual	National
<b>FOCUS AREA 10: PUBLIC SAFETY AND SECURITY</b>							
1. Improve internal security for protection of life and property	1. Police-citizen ratio	OUTCOME	The ratio of the total number of police officers to the country's population	Measures improvement in public safety in terms of crime detection rate and physical security of the Ghanaian populace	MOI, Ghana Police Service (GPS), GSS	Quarterly, Annual	National, Regional, District, Gender
	2. Percentage change in reported cases of crime	OUTCOME	The change in the number of reported cases of major crimes including rape, armed robbery and murder, expressed as a percentage of total number of reported cases of major crimes in the preceding year	Measure of public safety and security	MINT, GPS, GSS	Quarterly, Annual	National, Regional, District, Gender
	3. Number of reported cases of drug trafficking and abuse	OUTCOME	The number of reported cases of drug trafficking and drug-related crimes	Measure of public safety and security	GPS, NACOB	Annual	National, Gender
	4. Recorded incidence of fire outbreaks	OUTCOME	Number of reported incidents of bush fires and domestic fire disasters	Measures the safety of life and property	MINT, GNFS, GAF, GSS	Annual	National, Regional

Indicator		Type of Indicator	Definition of Indicator	Rationale	Source	Frequency	Disaggregation
	5. Percentage change in incidence of disaster across the country	OUTCOME	The change in the number of recorded disaster incidents, including earthquakes, floods, etc., expressed as a percentage of incidents the preceding year	Measures the extent of public safety in relation to flood disaster	MINT, NADMO, GAF, GSS	Quarterly, Annual	National, Regional
	6. Recorded cases of foreigners arrested without resident/ work permit	OUTCOME	Total number of illegal foreign immigrants processed and arraigned before court	Measure of the extent of public safety and security	MINT, Ghana Immigration Service (GIS ), GPS, MFARI, GSS	Quarterly, Annual	National, Regional, Gender
2. Enhance peace and security	1. Net recruitment rate into the Ghana Armed Forces	OUTPUT	Rate of recruitment into the Ghana Armed Forces, Ghana Air Force, Ghana Navy, minus the rate of loss of personnel through retirement, death, etc.	Determines the strength of Ghana's military forces, and capacity to forestall external aggression	MoD	Annual	National, Gender
	2. Percentage of personnel deployed in peacekeeping operations	OUTCOME	The armed personnel involved in peacekeeping operations, expressed as a percentage of the total number of personnel in the Ghana Army	Measure of national commitment to global peace and security.	MoD	Annual	National, Gender
<b>FOCUS AREA 11: ACCESS TO RIGHTS AND ENTITLEMENTS</b>							
1. Protect children from direct and indirect physical and emotional harm	1. Reported cases of child trafficking and child abuse	OUTCOME	The total number of cases of child trafficking and child abuse recorded by state institutions	Assesses efforts aimed at ensuring child protection and participation.	MoGCSP, DOVVSU, CHRAJ	Quarterly, Annual	National, Gender
	2. Reported cases of domestic violence	OUTCOME	Reported cases of forms of violence against women and children on an annual basis	Measures of effort at reducing domestic violence and protecting the vulnerable	MoGCSP, DOVVSU	Annual	National, Gender, Regional
2. Ensure effective social integration of PWDs	Number of institutions with disability-friendly structures	OUTPUT	Total number of public institutions with disability-friendly structures	Measure of progress towards meeting requirements of the Disability Law	MoGCSP, MWRWH	Annual	National, Regional
<b>FOCUS AREA 12: NATIONAL CULTURE FOR DEVELOPMENT</b>							
1. Harness culture for national development	Number of Culture for Development programmes staged at Centres of National Culture	INPUT	Total count of programmes on Culture for Development at regional Centres for National Culture	Assesses government efforts to promote culture in development	NCCE, MTCCA	Annually	National
2. Promote the role of the chieftaincy institution in	Percentage of cases of chieftaincy disputes resolved	OUTCOME	Number of chieftaincy disputes resolved, expressed as a percentage of total disputes recorded	Measures the contribution of the chieftaincy institution to social cohesion in national	MoCTA, National House of Chiefs	Annual	National, Regional

Indicator	Type of Indicator	Definition of Indicator	Rationale	Source	Frequency	Disaggregation	
national development	Proportion of chieftaincy lines of succession documented and legislated	OUTPUT	The number of chieftaincy lines of succession documented by the National House of Chiefs and legislated, expressed as a percentage of all lines of succession	development. Assesses the capacity of chieftaincy institutions to address chieftaincy disputes related to succession and determine the capacity of the institution to self-regulate	MoCTA, National House of Chiefs	Annual	National, Regional
<b>FOCUS AREA 13: INTERNATIONAL RELATIONS (PARTNERSHIP) FOR DEVELOPMENT</b>							
1. Accelerate economic and social integration with regional and sub-regional states and promote a rules-based and equitable international trading system	Number of international protocols and conventions ratified by Ghana	OUTPUT	The total number of international protocols and conventions to which Ghana is a signatory and ratified by Parliament and translated into laws and regulations	Measures government commitment to international protocols and conventions, as well as their operationalisation.	MFARI, Parliament	Annual	National
2. Promote international peace and sustainable development	Number of global, regional and sub-regional events Ghana participated in	OUTPUT	The total number of events in a given year (including presidential summits, trade and investment negotiations, trade exhibitions, conferences, etc.) Ghana participated in	Measure of Ghana's commitment to global, regional and sub-regional partnerships, and improved international relations and image	MFARI, MDAs	Annual, Quarterly	National, Sectoral
3. Leverage economic and technological opportunities for sustainable development	Total number of Ghana's missions abroad with trade and culture desk officers	OUTPUT	Total number of Ghana's missions and embassies abroad that have trade and culture desk officers	Measure of Ghana's representation abroad and capacity to engage and participate in global politics, economics and trade for global partnership	MFARI	Annual	National
<b>FOCUS AREA 14: EVIDENCE-BASED DECISION MAKING</b>							
1. Establish and maintain an efficient identification management system	Percentage of eligible population enrolled in the NIA civil register and number of persons with ID cards	OUTPUT	The number of citizens registered and issued ID cards, divided by the estimated eligible population	Measures efforts at harmonising siloes of data bases on biometric ID	NIA, EC, Passport Office, DVLA, Births & Deaths Registry	Annually	National, Gender
2. Improve quality and	1. Percentage of vital events registered	INPUT	Total vital events registered (disaggregated by marriages,	Measure of change in enrolment of vital life	Births & Deaths Registry, MLGRD	Annually	National, Gender

Indicator	Type of Indicator	Definition of Indicator	Rationale	Source	Frequency	Disaggregation	
completeness of vital events registration and associated services			births, deaths, divorces, etc.), expressed as a percentage of expected number of events	events			
	2. Proportion of registered deaths that have cause of death identified	PROCESS	Registered deaths registered that have cause of death identified as a percentage of all registered deaths	Determining the causes of death	Births & Deaths Registry, MLGRD, MESTI	Annually	National, Gender, Age
3. Enhance efficiency and effectiveness of the national M&E system at all levels	Timeliness of production of Annual Progress Reports (APRs)	PROCESS	Difference between the time of publication of National APR and the expected/scheduled time for completion of the report	A measure of improvements in the national M&E system	NDPC	Annually	National
4. Improve availability of quality data for policy formulation, analysis and decision making	Number of key national statistical reports produced	OUTPUT	Number of key statistical reports produced by GSS (including GLSS)	Measures the extent of availability of relevant and regular data on key national indicators for policy formulation, analysis and decision making	GSS	Annual	National

## 7.2 PERFORMANCE INDICATORS WITH BASELINE AND TARGETS

Indicator	Type of Indicator	Definition of Indicator	Baseline data (2013)	TARGETS			
				2014	2015	2016	2017
<b>FOCUS AREA 1: DEEPENING THE PRACTICE OF DEMOCRACY AND INSTITUTIONAL REFORMS</b>							
1. The revised national Constitution	OUTCOME	A revised 1992 Republic of Ghana Constitution that has gone through the necessary approval by Parliament and referendums, and is assented to by the President	The non-entrenched Bill was submitted to the Attorney-General who was supposed to process and submit to the Speaker of Parliament	Revised constitutional provisions bills (both entrenched and non-entrenched) prepared and submitted to Parliament for consideration and next steps	Revised entrenched constitutional provisions considered and approved by Parliament and entrenched provisions subjected to referendum	Approved revised constitutional provisions (both entrenched and non-entrenched) sign off	Revised national Constitution in place
2. The total number of papers laid and considered by Parliament	OUTPUT	The number of Bills, Legislative Instruments, reports and international and national agreements laid and considered by Parliament in a given year	Sittings	131	NA	NA	NA
			Committee Meetings	263	NA	NA	NA
			Bills passed into law	17	NA	NA	NA
			Plenary sittings	106	NA	NA	NA
			LIs	8	NA	NA	NA
			International agreements	85	NA	NA	NA
			Number of statements admitted	-	NA	NA	NA
			Number of Parliamentary questions	-	NA	NA	NA
3. The percentage change in budgetary resources allocated to Parliament	INPUT	The change in amount of budgetary resources (goods, services, and capital/assets) to Parliament, expressed as a percentage of the preceding year's budgetary resources	<b>Allocation</b> (GH¢ mn)      % change 109.29      127%	<b>Actual Release</b> 54%	<b>Actual Release</b> 44%	<b>Actual Release</b> 40%	<b>Actual Release</b> 40%
			<b>Actual</b> (GH¢ mn)      % change 64.65      0.0%				
4. The percentage change in budgetary resources allocated to independent governance institutions	INPUT	The change in amount of budgetary resources (approved and actual releases) to independent governance institutions (i.e. CHRAJ, NCCE, EC, NMC and Judicial Service) as a percentage of previous year's allocation	Actual Releases (GH¢ mn)      % change				
			EC – GH¢62,275      72.1%	NA	NA	NA	NA
			CHRAJ – GH¢12,476      23.9%	NA	NA	NA	NA
			NCCE – GH¢25,934      24.9%	50.0%	33.6%	33.6%	31.1%
			JS – GH¢154,475      25.9%	61.1%	30.0%	25.1%	11.8%
			NMC – GH¢1.116      51.5%	100.0%	70.0%	60.0%	40.0%

Indicator	Type of Indicator	Definition of Indicator	Baseline data (2013)	TARGETS			
				2014	2015	2016	2017
5. CSO participation in policy formulation and development process	PROCESS	Inventory of national development processes (such as policy formulation, implementation, monitoring and evaluation; budgetary process; national dialogues, etc.) that CSOs, private sector and think tanks are involved in during the year, as well as a description of the nature of involvement	CSOs were involved in the CSPGs for policy formulation and planning processes and participated in the M&E Sector Working Group (SWG) meetings  CSOs also participated in the budgetary processes including the budget hearings and presented an MOU on an independent budget	- CSOs, think thanks, etc. participate in selection of indicators and setting of target for monitoring national development plans  - ISODEC Open Budget Index: Score B	- CSOs, think thanks, etc. participate in preparing annual monitoring report on national development plans	- CSOs participate in preparing annual monitoring report on national development plans - ISODEC Open Budget Index: Score B+	- CSOs participate in preparing annual monitoring report on national development plans  - ISODEC Open Budget Index: Score B+
6. National Economic Forum organised	OUTPUT	Inventory of activities related to national economic forum, including meetings of implementation committee, preparation of implementation reports, organisation of annual stakeholders' forum	0 Non-existence of a broad-based national forum to engage stakeholders in policy discourse on the economy	1 -- NEF organised at Senchi to promote broad-based dialogue to provide solutions to economic issues -- IAG group established to monitor implementation of recommendations from the forum -- Senchi Consensus first quarterly progress report prepared	1	1	1
7. Operational Election Fund established	PROCESS	Description of actions taken, including legal processes, to ensure that the Election Fund is established and made operational	Election Bill still in preparation	Proposal made to Parliament and accepted by all political parties with representation in Parliament to consider	0% Presentation to Parliament of Public Financing of Political Parties Bill	0% - Passage of Bill into law by Parliament and assented to by the President	NA
8. Percentage of decisions generated through IPAC consultations implemented by EC	INPUT	The number of decisions agreed at IPAC implemented by EC, expressed as a percentage	NA	NA	NA	NA	NA

Indicator	Type of Indicator	Definition of Indicator	Baseline data (2013)	TARGETS			
				2014	2015	2016	2017
		of total IPAC decisions					
9. Public perception of the performance of EC (survey)	IMPACT	Percentage of population who believe the EC is independent and transparent	NA	NA	NA	NA	NA
10. Percentage of citizenry who exercised their right to vote in presidential, parliamentary and District Assembly elections	OUTPUT	The number of voters on the electoral register who voted during a presidential, parliamentary and district assemblies elections, expressed as a percentage of total voter population	NA	NA	NA	NA	NA
<b>FOCUS AREA 2: LOCAL GOVERNANCE AND DECENTRALISATION</b>							
1. Proportion of MMDA personnel in relation to total central government personnel	OUTPUT	The total number of employees in all MMDAs, expressed as a percentage of the total number of personnel on government payroll	Total # MMDAs' employees: NA Total # personnel on Govt's payroll:= 509,783 - MMDAs' share: = NA	≥8.8%	≥8.8%	≥8.8%	≥8.8%
2. The share of MMDA total revenue in total receipts	INPUT	Total MMDA revenue (including IGF, DACF, GOG transfer, HIPC transfer and Donor) expressed as a percentage of total national receipt/revenue	Total MMDAs' Revenue: Gh¢651.986 mil Total national revenue/ receipt: Gh¢ 19,471.6 mil % Share: 3.35%	≥3.4%	≥3.4%	≥3.4%	≥3.4%
3. Share of Central Government's transfers to MMDA's in total national budget	INPUT	Total DACF, HIPC and GOG funding to MMDAs, expressed as a percentage of annual national total revenue, excluding grants	- Total central govt transfers: GH¢300.820 mn -Total national revenue, excluding grants: GH¢18,732.1 mn - % Share: 1.6%	≥1.6%	≥1.6%	≥1.6%	≥1.6%
<b>FOCUS AREA 3: SPECIAL DEVELOPMENT ZONES</b>							
1. Number of special development initiatives/mechanisms established	PROCESS	The number of special development authorities/initiatives created by the government to address specific needs or development challenges of particular areas	0 -Development of concept note on the establishment of the Western Corridor Development Authority is still ongoing	1	1	1	1

Indicator	Type of Indicator	Definition of Indicator	Baseline data (2013)	TARGETS			
				2014	2015	2016	2017
2. Proportion of national budget allocated to special development initiatives	INPUT	Total amount allocated to special development initiatives including MiDA, SADA, etc. expressed as a percentage of the total national budget	MiDA: -Donor= GH¢15.227 mn -GoG=GH¢23.3 mn SADA = GH¢22.726 mn CEDECOM = GH¢7.419 mn	NA	NA	NA	NA
<b>FOCUS AREA 4: PUBLIC POLICY DEVELOPMENT AND MANAGEMENT</b>							
1. Lis on NDPC Act 479 and Planning System Act 480 (both 1994) passed by Parliament	PROCESS	The enactment of Lis to operationalise Acts 479 & 480 and to guide MDAs and MMDAs in national development	First draft of LI developed	Revision of first draft of LI	LI laid before Parliament and enacted	LI enacted	LI enacted
2. Long-Term National Development Plan (LTNDP) prepared	PROCESS	Completion of the preparation of a Long-Term National Development Plan to form the basis for future medium-term policy frameworks and to guide successive governments	A road map for preparing the LTNDP initiated by the Directorate and submitted to the Commission for approval	Approved road map signed off	Launch of LTNDP at all levels	Draft LTNDP	LTNDP finalised
3. Proportion of public service integrated into NITA system	OUTPUT	Measures progress of effort to place all state institutions onto NITA platform	LTE subscription =237 Institution on fibre =89	NA	NA	NA	NA
<b>FOCUS AREA 5: PUBLIC SECTOR REFORMS</b>							
1. Integrated public service-wide Human Resource Management Information System (HRMIS) established	PROCESS	Description of actions taken to ensure the completion of a functional, public service-wide human resource management information system	- HRMIS Requirement Analysis - Selection of pilot MDAs - Sensitisation of pilot MDAs	50% of data of the nine pilot MDAs captured, validated and entered into the HRMIS	100% data of the nine pilot MDAs captured, validated and entered into the HRMIS	Conduct employee headcount and determine established levels of positions in the pilot MDAs	Operational integrated, public service-wide HRMIS in at least nine pilot MDAs
2. The proportion of personnel with the right skill set in the public service	OUTPUT	The number of personnel occupying various positions in the public service with requisite expertise, expressed as a percentage of total number of public servants	NA (Development of the integrated human resource database system under the GIFMIS Project has begun)	NA	NA	NA	NA
3. Public perception of public service delivery	IMPACT	The proportion of general public who approve of the	NA	NA	NA	NA	NA

Indicator	Type of Indicator	Definition of Indicator	Baseline data (2013)	TARGETS			
				2014	2015	2016	2017
and productivity		quality of service delivered by the public service					
<b>FOCUS AREA 6: ENHANCING DEVELOPMENT COMMUNICATION</b>							
1. Level of press freedom (Press Freedom Index-PFI)	OUTCOME	A composite index of every kind of violation directly affecting journalists including murder, imprisonment, physical attacks and threats, and news media censorship, confiscation of newspaper issues, searches and harassment	Out of 179 countries surveyed Ghana ranked 30 <sup>th</sup>	Ranked <30 <sup>th</sup> out of 179 countries surveyed	Ranked <30 <sup>th</sup> out of 179 countries surveyed	Ranked <30 <sup>th</sup> out of 179 countries surveyed	Ranked <30 <sup>th</sup> out of 179 countries surveyed
2. Number of National Policy Dialogues	OUTPUT	The number of Meet-the-Press series, budget dissemination workshops, town hall meetings, etc. organised	No. of Meet-the-Press series: 21 Press conferences: 6 Budget dissemination programmes: 0 Town Hall meetings (G4P) : 45 National Policy Fair: 1	>21 >6 10 >45 1	>21 >6 10 >45 1	>21 >6 10 >45 1	>21 >6 10 >45 1
3. Scores on Public Expenditure Tracking Survey	OUTPUT	Grading of efficiency of utilisation of public resources in selected social sectors (e.g. education and health) based on discrepancies between resource allocations from centre to resources received by service providers such as schools, clinics and hospitals	NA	NA	NA	NA	NA
<b>FOCUS AREA 7: GENDER EQUITY AND WOMEN'S EMPOWERMENT</b>							
1. Percentage change in women in public life (i.e. administration and political leadership)	OUTPUT	The change in total number of women in administration and political leadership including, Ministers and Deputy Ministers of State, Members of Parliament, MMDCE, Chief Directors, Members of District Assemblies, etc., expressed as a percentage of total	-Ministers = 15.4% (10) - Dep. Minister =17.9% (5%) - MPs 10.5% (29) - MMDCEs = 7.17% (16) - Chief Directors = 2 (8.3%) - Chief Justice = 100% (1) - Supreme Court Judges = 38.5% (5) High Court Judges = 23.3% (24) - District Assembly appointee =	Ministers – 40% Dep. Ministers – 30% Members of Parliament – 40% MMDCE – 15% Chief Directors - 30% Chief Justice – 100% Supreme Court Judges – 40% High Court Judges –	40% >30% 10.5% 40% >30% 100% 40%	40% Na 10.5% 40% >30% 100% 40%	40% 30% 40% 40% >30% 100% 40%

Indicator	Type of Indicator	Definition of Indicator	Baseline data (2013)	TARGETS			
				2014	2015	2016	2017
		population in relevant category	NA - District Assembly elected member = 7% (427)  <b>Overall = 23%</b>	40% District Assembly appointees – 40% District Assembly elected members – 20% <b>Overall = 40%</b>	40% 40% 20% <b>40%</b>	40% 40% 20% <b>40%</b>	40% 40% 20% <b>40%</b>
2. Number of MDAs and MMDA implementing gender-responsive budgets	OUTCOME	Number of MDAs and MMDAs that have adopted and incorporated the relevant gender dimensions in the preparation and implementation of their respective annual budget	MDAs: 23 MMDAs: 55	NA	NA	NA	NA
3. Proportion of women with access to institutional credit	OUTCOME	Number of women with institutional credit, including MASLOC and other microfinance schemes, in relation to total number of beneficiaries	MASLOC: Women: 19,684 (90.28%)  Micro Finance Scheme (Non-Banking Supervision Unit) =NA	>90%  NA	>90%  NA	>90%  NA	>90%  NA
<b>FOCUS AREA 8: CORRUPTION AND ECONOMIC CRIMES</b>							
1. Corruption perception Index	OUTCOME	Composite index of corruption-related data which focuses on corruption in the public sector including the abuse of public office for private gain (i.e. bribe taken by public officials in public procurement).	At least 46 out of a clean score of 100	At least 47 out of a clean score of 100	At least 48 out of a clean score of 100	At least 49 out of a clean score of 100	At least 50 out of a clean score of 100
2. Number of corruption cases recorded by state anti-corruption institutions including CHRAJ and EOCO	OUTPUT	Number of corruption-related cases received by CHRAJ and EOCO	<b>CHRAJ:</b> - Number of human rights cases received and investigated: <b>10,219</b> - Number of corruption cases received and investigated: <b>20</b> - Number of administrative injustices cases received and investigated: <b>455</b> Total number = <b>10,694</b> <b>EOCO = 308</b>	10,150 10,150 45 120 100  1,000  10,295 11,270 NA	NA NA NA NA NA  NA  NA NA NA	NA NA NA NA NA  NA  NA NA NA	NA NA NA NA NA  NA  NA NA NA
3. Number of corruption	OUTPUT	Number of institutions and	14 recommendations	NA	NA	NA	NA

Indicator	Type of Indicator	Definition of Indicator	Baseline data (2013)	TARGETS			
				2014	2015	2016	2017
cases identified by Public Accounts Committee and sanctioned		individuals who are indicted by the report of the Public Accounts Committee (PAC), and sanctioned accordingly					
<b>FOCUS AREA 9: RULE OF LAW AND ACCESS TO JUSTICE</b>							
1. Number of lawyers called to the bar	OUTPUT	Total number of new lawyers called to the Bar on an annual basis.	Called to the Bar: 221 Number of lawyers appointed to the Bench: 47	300 50	400 60	500 70	600 80
2. Percentage of courts computerised	OUTPUT	Number of courts computerised as a percentage of all courts	61.5%	70.0%	80.0%	90.0%	100%
3. Number of days for resolving dispute	OUTCOME	The average number of days taken for a court to give a ruling on a dispute	6 months	6 months	5 months	5 months	3 months
4. Number of cases recorded and settled through Alternative Dispute Resolution (ADR)	OUTCOME	Total number of cases recorded and settled through ADR	Recorded: 6,668 Settled: 2,806 (42%)	Recorded:6,870 Settled: 4,122 (60%)	Recorded:7,076 Settled: 4,953 (70%)	Recorded:7,288 Settled: 5,830 (80%)	Recorded:7,507 Settled: 6,381 (85%)
<b>FOCUS AREA 10: PUBLIC SAFETY AND SECURITY</b>							
1. Police-citizen ratio	OUTCOME	The ratio of the total number of police officers to the country's population	Total # of police 33,467 Ratio 1:747	NA 1:747	NA 1:648	NA 1:564	NA 1:490
2. Percentage change in reported cases of crime	OUTCOME	The change in the number of reported cases of major crimes (including rape, armed robbery and murder), expressed as a percentage of total number of reported cases of major crimes in the preceding year	Reported cases = 220,489 % change: -3.6% decline	194,355 -11.9%	174,920 10.0%	157,428 -10.0%	141,685 -10.0%
3. Number of reported cases of drug trafficking and abuse	OUTCOME	The number of reported cases of drug trafficking and drug-related crimes	Cases reported (NACOB) = 27 Police =371 cases disposed of (NACOB = 37)	Cases reported (NACOB) = NA Police = NA Cases disposed of (NACOB = NA)	Cases reported (NACOB) = NA Police = NA Cases disposed of (NACOB = NA)	Cases reported (NACOB) = NA Police = NA Cases disposed of (NACOB = NA)	Cases reported (NACOB) = NA Police =NA Cases disposed of (NACOB = NA)

Indicator	Type of Indicator	Definition of Indicator	Baseline data (2013)	TARGETS			
				2014	2015	2016	2017
4. Recorded incidence of fire outbreaks	OUTCOME	Number of reported incidents of bush fires, and domestic fire disasters	Fire outbreaks = 4, 083 Rescue operations = 612	NA	NA	NA	NA
5. Percentage change in incidence of disaster across the country	OUTCOME	The change in the number of recorded disaster incidents, including earthquakes and floods, etc., expressed as a percentage of preceding year incidents	100 occurrences of rainstorms and flooding Northern Region conflict (Bimobas and Konkombas)	NA	NA	NA	NA
6. Recorded cases of foreigners arrested without residence/work permit	OUTCOME	Total number of illegal foreign immigrants processed and arraigned before court.	1,122 (257.32%)	Reduction in the number of irregular migrants by 25% by 2017			
7. Net recruitment rate into the Ghana Armed Forces	OUTPUT	Rate of recruitment into the Ghana Armed Forces, Ghana Air Force, Ghana Navy, minus rate of loss of personnel through retirement, death, etc.	Net recruitment rate = -1.2% Rate of recruitment = 5.3% Attrition rate = 4.1%	-1.2% 10% 8.8%	-1.5% 10.0% 8.5%	-2.2% 10.0% 7.8%	-1.3% 10% 8.7%
8. Percentage of personnel deployed in peacekeeping operations	OUTCOME	Personnel involved in peacekeeping operations, expressed as a percentage of the total number of personnel in the Ghana Army	15.7%	20.9%	20.9%	20.9%	20.9%
<b>FOCUS AREA 11: ACCESS TO RIGHTS AND ENTITLEMENTS</b>							
1. Reported cases of child trafficking and child abuse	OUTCOME	The total number of cases of child trafficking and child abuse recorded by state institutions	Child trafficking = 9 Child abuse = 15	NA NA	NA NA	NA NA	NA NA
2. Reported cases of domestic violence	OUTCOME	Annual number of reported cases of violence against women and children	Number of reported cases of violence against women 19,171	Number of reported cases of violence against women reduced to 17,655		NA	NA
3. Number of institutions with disability-friendly structures	OUTPUT	Total count of public institutions with disability-friendly structures	NA	NA	NA	NA	NA
<b>FOCUS AREA 12: NATIONAL CULTURE FOR DEVELOPMENT</b>							
1. Number of Culture for Development programmes staged at	INPUT	Total number of programmes on Culture for Development at regional	NA	NA	NA	NA	NA

Indicator	Type of Indicator	Definition of Indicator	Baseline data (2013)	TARGETS			
				2014	2015	2016	2017
Centres for National Culture		Centres for National Culture					
2. Percentage of chieftaincy disputes resolved	OUTCOME	Total number of recorded chieftaincy disputes resolved, expressed as a percentage of total number of disputes recorded	Total number of disputes = 400 Resolved = 56 Unresolved = 344	- <400 - At least 10% of all recorded cases - Unresolved= NA	- <400 - At least 15% - NA	- <400 - At least 15% - NA	- <400 - At least 15% - NA
3. Proportion of chieftaincy lines of succession documented and ratified by law	OUTPUT	The number of chieftaincy lines of succession documented by the National House of Chiefs and ratified by law expressed as a percentage of all lines of succession	15 LIs on lines of succession were successfully laid before Parliament	NA	NA	NA	NA
<b>FOCUS AREA 13: INTERNATIONAL RELATIONS (PARTNERSHIP) FOR DEVELOPMENT</b>							
1. Number of international protocols and conventions ratified by Ghana	OUTPUT	The total number of international protocols and conventions to which Ghana is a signatory and which have been ratified by Parliament and translated into laws and regulations	Number ratified = 5 (Arms Trade Treaty; Statute of the International Renewable Energy Agency; Third Supplementary Protocols against the Illicit Manufacturing of and Trafficking in Firearms, their Parts and Components and Ammunition, Supplementing the United Nations Convention against Transnational Organized Crime; The African Youth Charter; International Labour Organisation (ILO) Maritime Labour Convention	Number ratified = 4 Statute of the International Renewable Energy Agency – (IRENA); Regional Convention on Fisheries Cooperation among African States bordering the Atlantic Ocean; Optional Protocol to the Convention on the Rights of the Child on the Involvement of Children in Armed Conflict; Third Supplementary Protocol against the Illicit Manufacturing of and Trafficking in Firearms, their Parts and Components, supplementing the United Nations Convention against Transnational	NA	NA	NA

Indicator	Type of Indicator	Definition of Indicator	Baseline data (2013)	TARGETS			
				2014	2015	2016	2017
				Organised Crime)			
2. Number of global, regional and sub-regional events Ghana participated in	OUTPUT	The total annual number of events (including heads of state summits, trade and investment negotiations, trade exhibitions, conferences, etc.) Ghana participated in	Number of heads of state summits = 8 Trade and Investment negotiations = 2 Number of conferences = 137 Number of exhibitions = 60	Number of heads of state summits = 6  Number of trade and investment negotiations = 12  Number of conferences/ fora = 30  Number of trade exhibitions = 7	NA	NA	NA
3. Total number of Ghana's missions abroad with trade and culture desk officers	OUTPUT	Total number of Ghana's missions and embassies abroad that have trade and culture desk officers	Number of missions = 51 Number of consulates = 7	Number of missions = 51 Number of consulates = 6	Number of missions = 51 Number of consulates = 6	Number of missions = 51 Number of consulates = 6	Number of missions = 51 Number of consulates = 6
<b>FOCUS AREA 14: EVIDENCE-BASED DECISION MAKING</b>							
1. Percentage of vital events registered	INPUT	Total vital events registered (disaggregated by marriages, births, deaths, divorces, etc.), expressed as a percentage of expected number of events	NIA has 15.4 million registered records available for all 10 regions; 9.14 million records already processed and held in the NIS database (national identity register)	NA  NA  NA	(i) Processing of remaining 6.26 million records into the NIS database; (ii) Register and process records of remaining 25% of population for NIS; (iii) Integrate other large databases into NIS database (national identity / civil register)	NA  NA  NA	NA  NA  NA
2. Proportion of registered deaths that have cause of death identified	PROCESS	Registered deaths that have cause of death identified, as a percentage of all registered deaths	Expected births: 817,890 Registered births: 476,447 (57%) Expected deaths: 256,549 Registered deaths: 51,466 (20%)	Expected births: 838,337 Registered births: 463,409 (57%) Expected deaths: 272,187	Births: 859,295 Deaths: 278,992	Births: 880,778 Deaths: 285,967	Births: 902,797 Deaths: 293,116

Indicator	Type of Indicator	Definition of Indicator	Baseline data (2013)	TARGETS			
				2014	2015	2016	2017
				Registered deaths: 52,576 (19%)			
3. Timeliness of production of Annual Progress Reports (APRs)	PROCESS	Difference between the time of publication of APRs and the expected/ scheduled time to complete the preparation of the national APR	2012 National APR was published in November 2013  Number of Sector (34)/district (216) APRs submitted to the NDPC by the end of July	2013 National APR published by end of August 2014  Number of Sector (34)/district (216) APRs submitted – end of March 2014	2014 National APR published in July 2015  Number of Sector (34)/ district (216) APRs submitted – end of March 2015	2015 National APR published in June 2016  Number of Sector (34)/ district (216) APRs submitted – end of March 2016	2016 National APR published in June 2017  Number of Sector (34)/ district (216) APRs submitted – end of March 2017
4. Number of key national statistical reports produced	OUTPUT	Number of key statistical reports produced by GSS (including GLSS)	2 (including 2010 Population and Housing Census Reports released in 2013: <i>a) National Census Analytical Report</i> <i>b) Ten Regional Census Analytical Reports (one for each region)</i> <i>c) Non-Monetary Poverty in Ghana</i> <i>d) Millennium Development Goals in Ghana</i> <i>e) Women and Men in Ghana</i> <i>f) The Elderly in Ghana</i> <i>g) Education and Literacy</i> <i>h) Children, Adolescents and Youth</i> <i>i) Demographic, Social, Economic and Housing Characteristics</i> <i>j) Census Atlas</i>	2. Statistical Compendium Including 2010 Population and Housing Census Reports released in 2014.  269 publications targeted 262* publications completed *(Seven publications not done due to inadequate funding)  Laying of the Statistics Bill in Parliament	45 publications targeted  Passing of the Statistics Bill into law by Parliament by end of 2015	60 publications targeted  Implement the Statistics Act	60 publications targeted  Implement the Statistics Act
5. Percentage of vital events registered	INPUT	Total vital events registered (disaggregated by marriages, births, deaths, divorce, etc.), expressed as a percentage of expected number of events	NA	NA	NA	NA	NA

**PRIORITY PERFORMANCE  
INDICATORS FOR THE  
PRESIDENT'S TRANSFORMATION  
AGENDA  
AND THE**

# **THEORY OF CHANGE UNDERLYING THE PRESIDENT TRANSFORMATION AGENDA**

## **A. VISION**

The President's medium-term vision in the transformation agenda is to create a strong, united, inclusive, prosperous country with opportunities for all.

## **B. OBJECTIVES**

The key pillars of this vision are:

- i. Improving service delivery in health, education, water and sanitation;
- ii. Increasing agricultural productivity;
- iii. Reviving the manufacturing sector as a key engine of growth;
- iv. Providing employment and decent work for the Ghanaian youth;
- v. Achieving macroeconomic stability;
- vi. Accelerating the development of modern infrastructure; and
- vii. Deepening good governance and pursuing institutional reform.

## **C. UNDERLYING THEORY OF CHANGE**

### **1. IMPROVING SERVICE DELIVERY IN EDUCATION, HEALTH, WATER AND SANITATION**

The sub-components of this priority area are:

- i. Enhancing the quality of education;
- ii. Improving access to quality health care;
- iii. Increasing access to quality water; and
- iv. Expanding coverage of improved sanitation services.

### **1.1 Quality of Education:**

The strategic intervention areas in this sub-component are: ensuring adequate education infrastructure, especially at the basic and senior high school levels and in deprived communities; ensuring the availability of adequate numbers of well-trained teaching personnel; ensuring an adequate supply of teaching materials; and removing financial barriers to quality education, especially among lower income groups.

In this regard, the priority transformation indicators to be monitored are:

- Pupil-trained teacher ratio;
- Teacher absenteeism rate, especially in deprived areas;
- Net enrolment ratio, especially in deprived areas (disaggregated by boys and girls);
- Completion rate, especially for girls; and
- Proficiency levels in mathematics, English and science (disaggregated by boys and girls).

### **1.2 Improved Access to Quality Health Care**

The strategic intervention areas under this objective are: improving physical health infrastructure, especially in deprived areas to improve equity gaps in access to health care facilities; strengthening the referral system; increasing the numbers and quality of health care professionals; and eliminating financial barriers in access to health care, especially for the poor.

In this regard, the priority transformation indicators to be monitored are:

- % change in number of primary health care centres within 5 kms of communities;
- OPD attendance rate;
- Share of population registered with the NHIS;
- Maternal mortality ratio;
- Malaria case fatality rate.

### **1.3 Access to Water**

The strategic intervention areas of focus are: expanding water treatment facilities; improving and expanding water distribution infrastructure; and instituting an effective water tariff mechanism that protects the poor.

In this regard, the priority transformation indicators to be monitored are:

- % of population with access to improved water;

- % distribution losses;
- Average number of water shortages in urban areas.

#### **1.4 Expanding coverage of improved sanitation services**

The strategic areas of focus are: developing an efficient waste management system; developing appropriate waste management infrastructure, including developing waste disposal sites in major towns and cities; and improving institutional capacity for waste management.

In this regard, the priority transformation indicators to be monitored are:

- Proportion of people with access to improved sanitation;
- Proportion of solid waste properly disposed of (major towns and cities)
- Proportion of population engaging in open defecation.

### **2. IMPROVING AGRICULTURAL PRODUCTIVITY**

The strategic intervention areas are: increasing the productivity of small-scale farmers; promoting large-scale commercial agricultural development; promoting selected crop development; reducing risk associated with agriculture production by promoting agriculture value-chain development; and strengthening agricultural infrastructure, including post-harvest and irrigation infrastructure.

In this regard, the priority transformation indicators to be monitored are:

- Yield of major staple crops per acre;
- Agricultural output per capita;
- Proportion of arable land under commercial agriculture, including agricultural estates;
- Rice deficit/surplus;
- Import bill of poultry products;
- Value and volume of agricultural products exported, excluding cocoa.

### **3. REVIVING THE MANUFACTURING SECTOR AS A KEY ENGINE OF GROWTH**

The strategic intervention areas of focus are: promoting an integrated aluminum industry; processing other mineral resources; light manufacturing in wood processing and wood products; agro-processing (especially by increasing the share of cocoa processed locally

and oil palm processing); developing selected commodities for domestic consumption and for export; promoting the development of selected markets; and establishing Industrial Development Fund to support ailing and infant manufacturing industries

In this regard, the priority transformation indicators to be monitored are:

- Manufacturing value added as a share of GDP;
- Share of manufacturing in merchandise exports;
- Value and volume of processed agriculture products exported.

#### **4. PROVIDING EMPLOYMENT AND DECENT WORK FOR THE GHANAIAN YOUTH**

The strategic areas of focus are: promoting productivity, especially in the informal sector; enhancing the employability of young labour market entrants (graduates and non-graduates alike); and providing support for SMEs and micro-enterprises in the form of business support services and start-up support.

In this regard, the priority transformation indicators to be monitored are:

- Number of new jobs per quarter;
- Proportion of the population in vulnerable employment;
- Number of jobs generated by special initiatives such as YES and YEA;
- Graduate joblessness;
- Sectoral employment growth.

#### **5. ACHIEVING MACROECONOMIC STABILITY**

The strategic intervention areas are: price stability (in respect of inflation, interest rates and exchange rates); controlling the budget deficit by blocking revenue leakages; wage bill management; reducing payroll fraud; and controlling high interest payments. Other focus areas include achieving external balance by promoting import substitution industries and promoting the export of light manufactured products.

In this regard, the priority transformation indicators to be monitored are:

- Wage bill as % of tax revenue;
- Domestic debt servicing/domestic revenue ratio;
- External debt servicing/export receipts ratio;
- Budget deficit/GDP ratio;

- Inflation rate;
- 91-day T-bill rate;
- Exchange rate depreciation;
- Proportion of consumption imports in total imports.

## **6. ACCELERATING THE DEVELOPMENT OF MODERN INFRASTRUCTURE**

The strategic areas of focus are: improving the size and quality of transport infrastructure; improving the application of science, technology and innovation in support of productivity and development; accelerating ICT development; and high quality and reliable power supply to support industries and households.

The interventions to improve the volume and quality of transport will focus on expansion and maintenance of infrastructure, while boosting investment to improve the application of science, technology and innovation. The development of the ICT sector will focus on enhancing the quality of service, while quality and reliable power supply will be increased through private sector participation in power generation, and improving the distribution infrastructure to reduce losses and improve the reliability of supply.

In this regard, the priority transformation indicators to be monitored are:

- Power outages per period;
- Internet penetration rate;
- Call drop-off rate;
- Average number of days to clear goods from ports;
- Share of public investment in science, technology and innovation;
- Road condition mix;
- Road accident rate;
- Number of kilometres of railway lines added per period;
- Volume of railway goods and passenger traffic per period.

## **7. DEEPENING GOOD GOVERNANCE AND PURSUING INSTITUTIONAL REFORM**

The strategic intervention areas of focus are: deepening the practice of democracy; local governance and decentralisation; special development zones; public policy development and management; public sector reform; development communication; gender equity and women's empowerment; rule of law and access to justice; corruption and economic crimes; public safety and security; exercise of rights and entitlements; culture and development; and evidence-based decision making.

In this regard, the priority transformation indicators to be monitored are:

- Proportion of citizens who report improvement in delivery of basic services (Perception survey);
- Proportion of citizens reporting that the government is responsive to their needs (Perception survey);
- Proportion of administrative infractions duly prosecuted;
- Crime rate per type;
- Number of days to resolve disputes;
- Proportion of women in public life;
- Number of people benefiting from social protection programmes (i.e. LEAP, NHIS, etc.)

## SUMMARY INDICATORS

Strategic Area	Indicator
<b>A.IMPROVING SERVICE DELIVERY IN HEALTH, EDUCATION, WATER AND SANITATION</b>	
<i>i. Enhancing the Quality of Education</i>	1. Proficiency rate in mathematics, English and science
	2. Pupil-trained teacher ratio
	3. Teacher absenteeism rate, especially in deprived areas
	4. Net enrolment ratio, especially in deprived areas
	5. Completion rate, especially for girls, at all levels
<i>ii. Improving Access to Quality Health Care</i>	1. % change in number of health care facilities within 5 kms of communities
	2. Number of CHPS compounds constructed
	3. OPD attendance rate
	4. Share of population registered with the NHIS
	5. Maternal mortality ratio (institutional and survey)
	6. Malaria case fatality rate
<i>iii. Increasing access to quality water</i>	1. % of population with access to improved water
	2. % distribution losses
	3. Average number of water shortages in urban areas
<i>iv. Expanding coverage of improved sanitation services</i>	1. Percentage with access to improved sanitation
	2. Proportion of solid waste properly disposed of (major towns and cities)
	3. Proportion of population engaged in open defecation (currently one out of five).
<b>B.IMPROVING AGRICULTURAL PRODUCTIVITY</b>	
	1. Yield of major staple crops per acre
	2. Agricultural output per capita
	3. Acres of crops established under Agriculture Estates
	4. Rice deficit/surplus (change in quantity of rice imports)
	5. Import bill of poultry products
	6. Value and volume of agricultural products exported
<b>C. REVIVING THE MANUFACTURING SECTOR AS A KEY ENGINE OF GROWTH</b>	
	1. Manufacturing value added share in GDP

Strategic Area	Indicator
	2. Share of manufacturing in merchandise exports 3. Value and volume of processed agricultural products exported 4. Average lending rates
<b>D. PROVIDING EMPLOYMENT AND DECENT WORK FOR THE GHANAIAN YOUTH</b>	
	1. Number of new jobs per quarter 2. Number of jobs generated by special initiatives such as YES, YEA 3. Proportion of the population in vulnerable employment (69% presently) 4. Graduate joblessness 5. Sectoral employment growth
<b>E. ACHIEVING MACRO-ECONOMIC STABILITY</b>	
	1. Budget deficit/GDP ratio 2. Wage bill/tax revenue ratio 3. Domestic debt service/domestic revenue ratio 4. External debt service/export receipts ratio 5. Inflation rate 6. 91-day T-bill rate 7. Exchange rate depreciation 8. Proportion of consumption imports in total imports
<b>F. ACCELERATING THE DEVELOPMENT OF MODERN INFRASTRUCTURE</b>	
	1. Number of kilometres of railway lines added 2. Volume of railway goods and passenger traffic per annum 3. Road condition mix 4. Volume of air passenger traffic (domestic and international) 5. Road accident rate 6. Share of public investment in science, technology and innovation development 7. Call drop-off rate 8. Power outages per period 9. Internet penetration rate

Strategic Area	Indicator
	10. Average number of days to clear goods from the ports
<b>G.DEEPENING GOOD GOVERNANCE AND PURSUING INSTITUTIONAL REFORM</b>	
	1. Proportion of citizens who report improvement in delivery of basic services (survey)
	2. Proportion of citizens reporting government is responsive to their needs (survey)
	3. Proportion of administrative infractions duly prosecuted
	4. Crime rate (public security)
	5. Percentage change in proportion of women in public life
	6. Number of days to resolve disputes (commercial, civil and criminal)
	7. Number of people benefiting from social protection programmes

**Strong, Stable, United, Inclusive,  
Prosperous Country with Opportunities  
for All**

**VISION**

Improved Service  
Delivery in Health,  
Education, Water &  
Sanitation

Rise in Agricultural  
Productivity

Revival of  
Manufacturing

Creation of  
Decent Jobs

**OBJECTIVE**

**Development  
of Modern  
Infrastructure**

**Macro-  
Economic  
Stability**

**Good  
Governance &  
Institutional  
Reform**

**ENABLERS**

**HEALTH**

CHPS  
Compounds

Regional  
Hospitals

Teaching  
Hospitals

Strengthen  
NHIS

**WATER & SANITATION**

National  
Sanitation  
Authority  
Establishment

Water  
Distribution  
Network  
Improvement

Expansion of  
Existing Water  
Production  
facilities

Institutional  
Reform in  
Water: Reduce  
Losses

**EDUCATION**

Community  
SHS Initiative

Polytechnics  
into Technical  
Universities

Teacher  
Redistribution  
Programme

10 New  
Colleges of  
Education

Making SHS Progressively Free

**AGRICULTURE**

Agricultural Estates  
Development

Agricultural Insurance

Value Chain  
Development

Fisherman's Life  
Insurance

Construction of Fish  
Landing Beaches

**MANUFACTURING**

Integrated Aluminium  
Industry Initiative

Industrial Development  
Fund

Construction Industry  
Scheme

Light Manufacturing  
Industry e.g. Machine Tool  
Production

Savannah Zone Industrial  
Programme

Tema/Takoradi Industrial  
City Programme

Cape Coast City ICT  
Programme

**DECENT JOBS**

EDWUMAPA Initiative

Youth Enterprise  
Scheme

Creative Arts Promotion  
Initiative

**DRIVERS**

# Creating an Enabling Environment

**OBJECTIVE**

Ensuring  
Macroeconomic  
Stability

Achieving Good  
Governance and  
Institutional Reform

Developing Modern  
Infrastructure

**ENABLERS**

**Fiscal Balance**

**External Balance**

**National Anti-Corruption  
Action Plan**

**Efficiency in Power  
Generation**

**Wage Bill  
Management**

**Exchange Rate  
Management**

**Social Protection Scheme**

**MCC Compact II**

**Block Tax  
Collection  
Leakages**

**Import  
Substitution  
(Light  
Manufacturing)**

**Promotion of Discipline**

**SHEP Programme**

**Implementation  
of GIFMIS**

**Law Enforcement**

**National Infrastructure  
Plan**

**Public Debt  
Management**

**Implementation of  
National Export  
Strategy**

**Decentralization: Local  
Economic Development**

**National Infrastructure  
Fund**

**Promoting Culture and  
Values**

**National Fibre Optic  
Backbone**

**National Identification  
Street Naming  
House Numbering**

**Spatial Development  
Framework**

**Modernization of Rail  
Network**

**Promotion of  
Products and  
Export Markets  
for Selected  
Products**

**Expansion of  
Tema/Takoradi Ports**

**Road Network:  
Eastern/Western/Volta  
Corridors**

**Deep Sea Port**

**DRIVERS**

**ENSURING  
MACROECONOMIC  
STABILITY**

- Controlled Inflation
- Interest rate

- Increased Reserves
- Exchange Rate Stability

**Fiscal Imbalance  
(Budget Deficit/Surplus)**

**External Imbalance**

REVENUE:	EXPENDITURE:
Low Levels of Domestic Revenue	High Wage Bill - Payroll Fraud - Low productivity
Revenue Leakages	High Interest Payments: - High Debt Stock - Domestic Debt dominated by Short-Term Debt

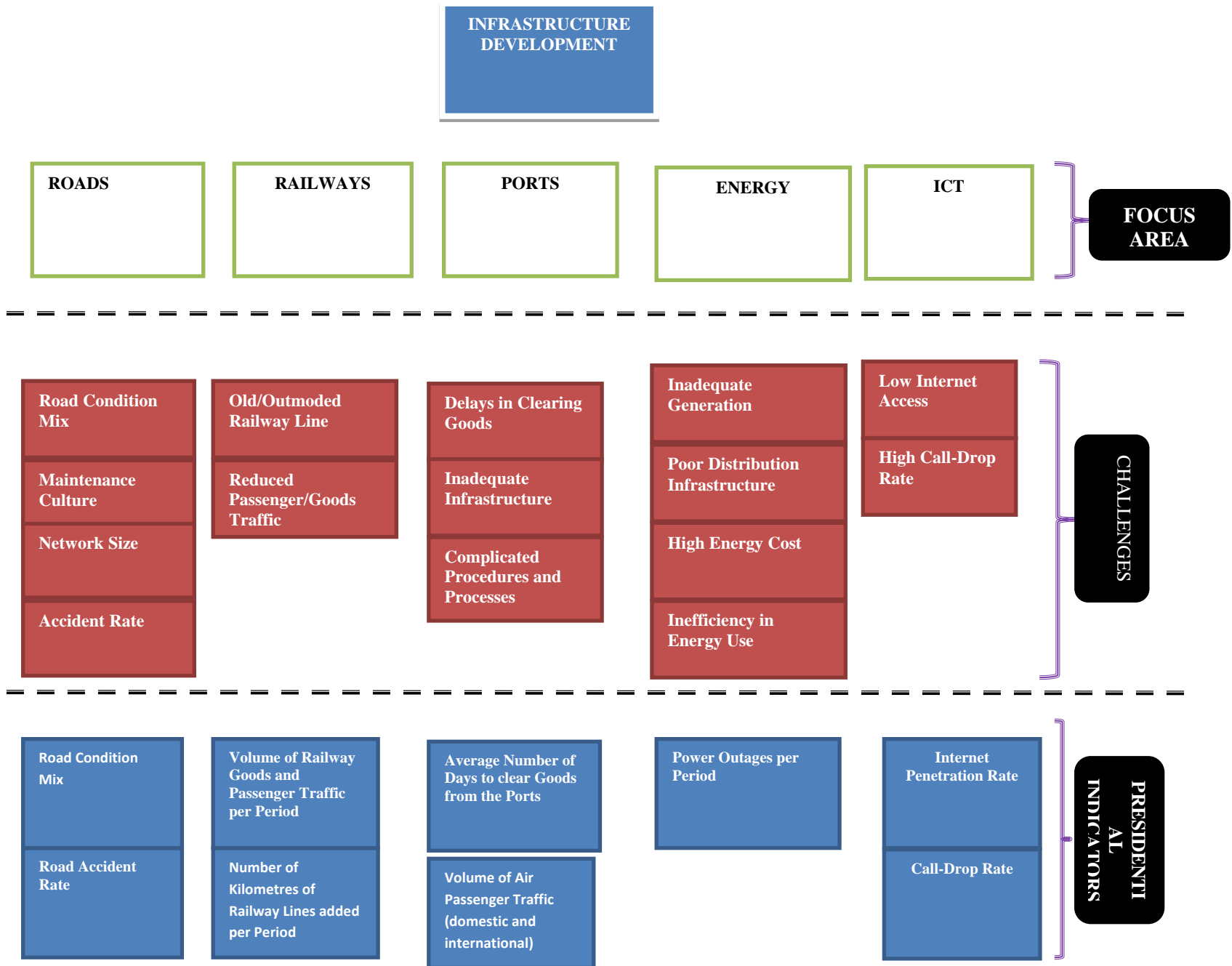
EXPORTS	IMPORTS
- Low manufacturing exports	- Dominated by household consumables

**CHALLENGES**

1. Budget Deficit/GDP
2. Wage Bill/Tax Revenue
3. Domestic Debt Service/Domestic Revenue
4. External Debt Service/Export Receipts
5. 91-Day T-Bill Rate

1. Trade Balance
2. Manufacturing/Exports
3. Consumption Imports/Total imports
4. Exchange Rate Depreciation

**PRESIDENTIAL  
INDICATORS**



**GOOD GOVERNANCE & INSTITUTIONAL REFORM**

**WEAK INSTITUTIONS**

**PERCEPTION OF CORRUPTION**

**OVER-CENTRALIZATION OF ECONOMIC ACTIVITIES**

**WOMEN'S EMPOWERMENT**

**SOCIAL PROTECTION/ RIGHTS & ENTITLEMENTS**

**FOCUS AREA**

Politicisation of institutions  
Quality of Personnel  
Accountability  
Control/ Leadership

Political Will to Fight Corruption  
Lifestyles of Political Office Holders  
Weak Systems

Accountability  
Non-Participatory

Education  
Involvement of Women in Leadership

Policies

**CHALLENGES**

Proportion of citizens who Report Improvement in **Delivery of Basic Services**  
Proportion of Women in Public Life

Proportion of Administrative Infractions duly Prosecuted  
Number of People benefiting from Social Protection Programmes

Proportion of Administrative Infractions duly Prosecuted

Number of Reported Crime per Type

Number of Days to Resolve Disputes

**PRESIDENTIAL INDICATORS**

Improved Service Delivery in Health, Education, Water & Sanitation

**QUALITY OF EDUCATION**

**WATER**

**HEALTH**

**SANITATION**

**FOCUS AREA**

Educational Infrastructure

Production of Treated Water

Infrastructure

Disposal of Waste

Financial Barriers

Distribution Network

Cost

Open Defecation

Availability of Personnel

Pricing

Personnel

Inadequate Teaching Materials

Logistics

**CHALLENGES**

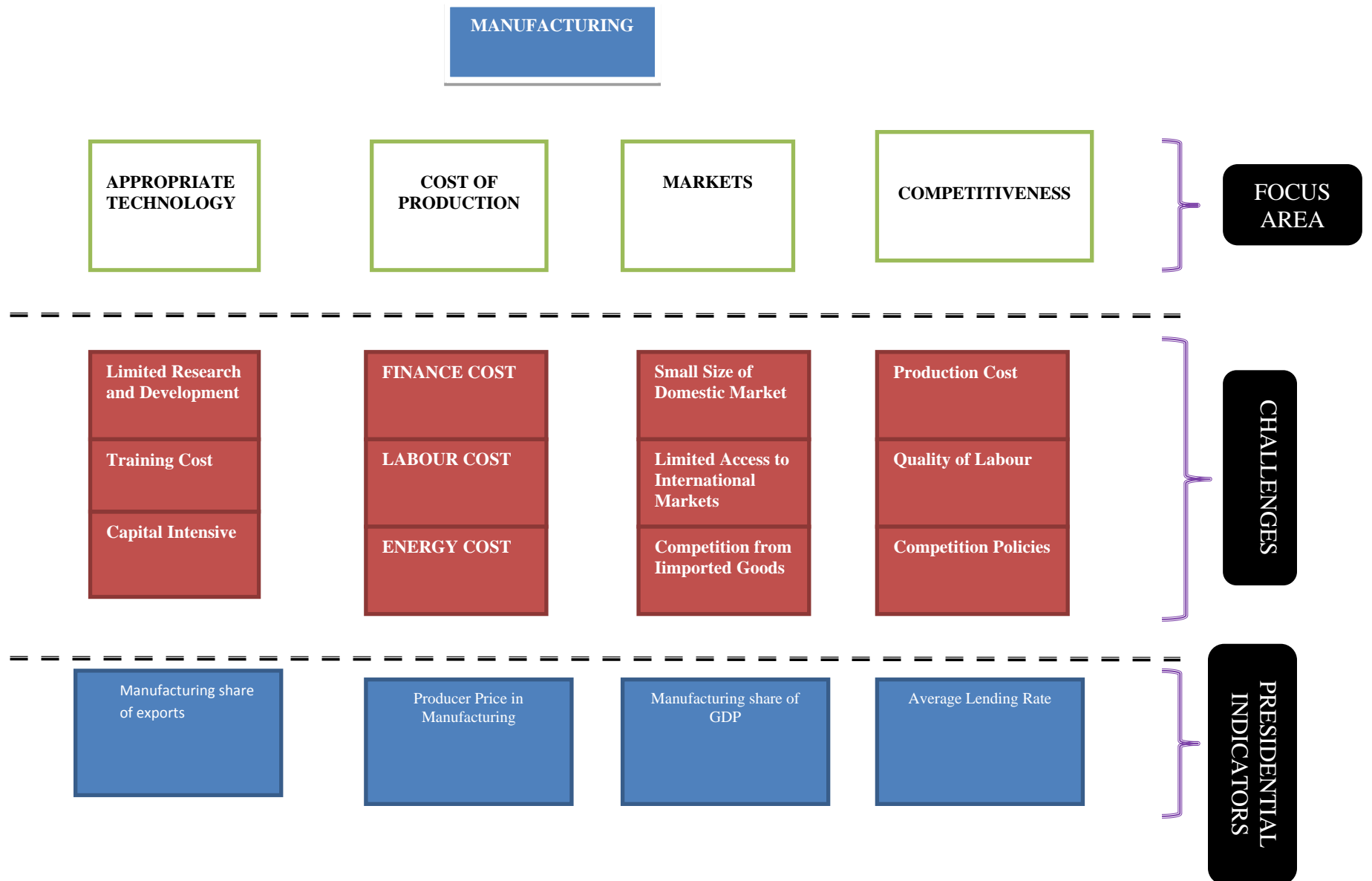
- Attrition rates at all levels
- Pupil-trained teacher ratio
- Teacher absenteeism rate, especially in deprived areas
- Net enrolment ratio, especially in deprived areas
- Completion rate, especially for girls
- Proficiency rate in mathematics, English and science

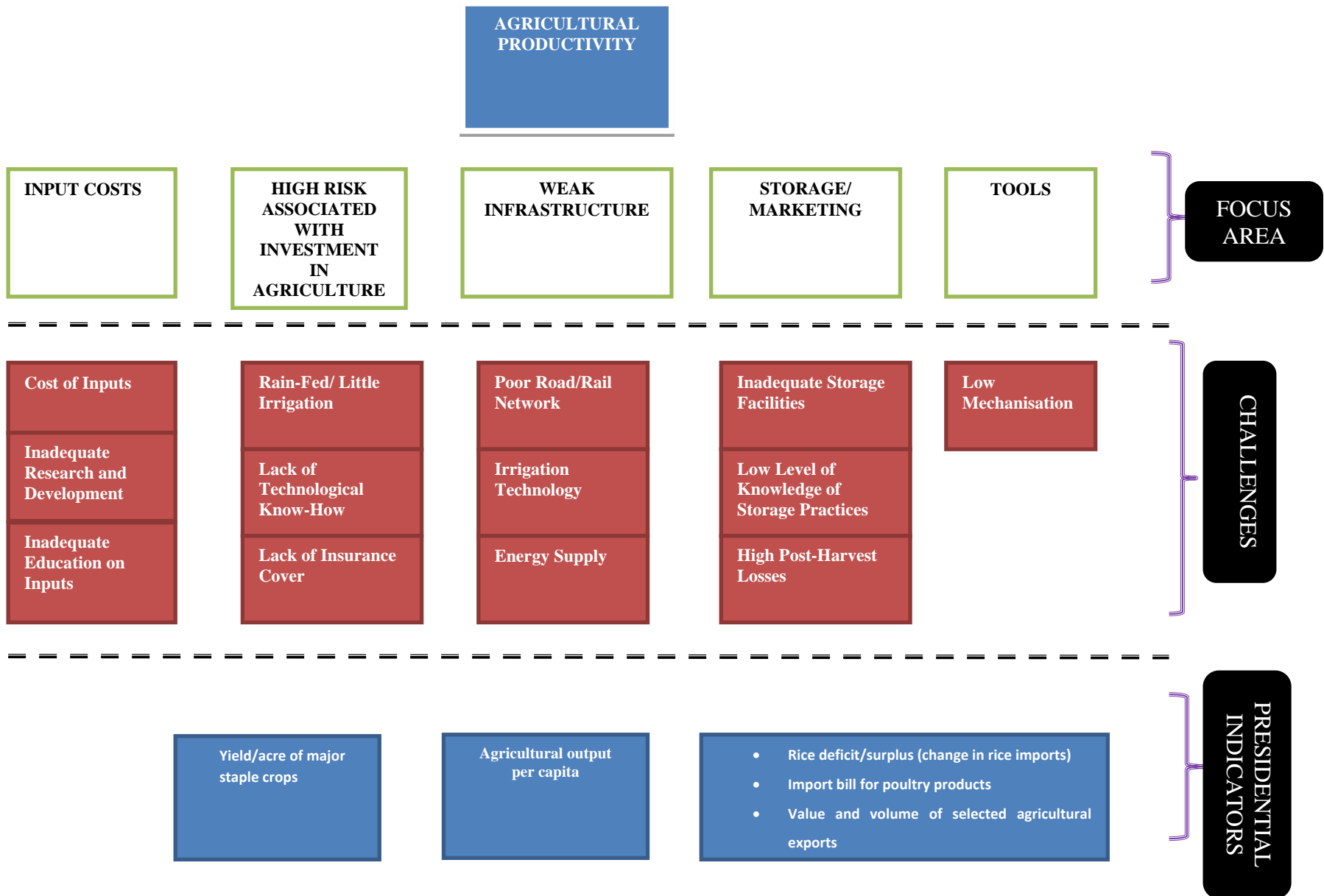
- % of population with access to improved water
- % distribution losses
- Average number of water shortages in urban areas

- % change in number of health care facilities within 5 kms of communities
- Number of CHPS Compounds completed
- OPD attendance rate
- Share of population registered with NHIS
- Maternal mortality ratio
- Malaria case fatality rate

- Proportion of the population with access to improved sanitation services
- Proportion of solid waste properly disposed of (major towns & cities)
- Proportion of population engaged in open defecation (one out of five currently).

**PRESIDENTIAL INDICATORS**





**CREATION OF  
DECENT WORK**

